

PHO 678759

UNITED STATES DEPARTMENT OF THE INTERIOR
NATIONAL PARK SERVICE

FOR NPS USE ONLY

MAR 7 1979

RECEIVED

DATE ENTERED 10-25-79

NATIONAL REGISTER OF HISTORIC PLACES
INVENTORY -- NOMINATION FORM

SEE INSTRUCTIONS IN HOW TO COMPLETE NATIONAL REGISTER FORMS
TYPE ALL ENTRIES -- COMPLETE APPLICABLE SECTIONS

1 NAME

HISTORIC

Demopolis Historic Business District
AND/OR COMMON

2 LOCATION

roughly bounded by Capital and Franklin Sts,
Demorette and Cedar Aves,

STREET & NUMBER

see continuation sheet

NOT FOR PUBLICATION

CITY, TOWN

CONGRESSIONAL DISTRICT

Demopolis

VICINITY OF

7

STATE

CODE

COUNTY

CODE

Alabama

01

Marengo

091

3 CLASSIFICATION

CATEGORY

OWNERSHIP

STATUS

PRESENT USE

DISTRICT

PUBLIC

OCCUPIED

AGRICULTURE

MUSEUM

BUILDING(S)

PRIVATE

UNOCCUPIED

COMMERCIAL

PARK

STRUCTURE

BOTH

WORK IN PROGRESS

EDUCATIONAL

PRIVATE RESIDENCE

SITE

PUBLIC ACQUISITION

ACCESSIBLE

ENTERTAINMENT

RELIGIOUS

OBJECT

IN PROCESS

YES: RESTRICTED

GOVERNMENT

SCIENTIFIC

BEING CONSIDERED

YES: UNRESTRICTED

INDUSTRIAL

TRANSPORTATION

NO

MILITARY

OTHER:

4 OWNER OF PROPERTY

NAME

see continuation sheet

STREET & NUMBER

CITY, TOWN

STATE

VICINITY OF

5 LOCATION OF LEGAL DESCRIPTION

COURTHOUSE,
REGISTRY OF DEEDS, ETC.

Marengo County Courthouse

STREET & NUMBER

CITY, TOWN

STATE

Linden

Alabama

6 REPRESENTATION IN EXISTING SURVEYS

TITLE

none

DATE

FEDERAL STATE COUNTY LOCAL

DEPOSITORY FOR
SURVEY RECORDS

CITY, TOWN

STATE

7 DESCRIPTION

CONDITION

EXCELLENT
 GOOD
 FAIR

DETERIORATED
 RUINS
 UNEXPOSED

CHECK ONE

UNALTERED
 ALTERED

CHECK ONE

ORIGINAL SITE
 MOVED DATE _____

DESCRIBE THE PRESENT AND ORIGINAL (IF KNOWN) PHYSICAL APPEARANCE

The Demopolis Historic Business District contains 56 structures within portions of a seven-block area comprising the town's commercial center and the adjacent Confederate Park (NRHP: 10/29/75).

The boundaries were drawn to include those structures built prior to 1930 which were historically important to the town's economy as well as architecturally significant as examples of period commercial styles. The buildings fall into five categories determined by their period appearance and visual significance: eight structures, or 14%, built during the post-Civil War period (1867-1872); thirty-one structures, or 56%, from the late-19th century (1880-1889), twelve structures, or 21%, from the early 20th century (1900-1928); four structures, or 7% built after 1930; and one non-contributing structure, or 2%, built in an earlier period but remodeled in a contemporary style.

The district is bounded by Confederate Park (NRHP 10/29/75) on the northwest and roughly by those streets (Capitol on the north, Cedar on the east, Franklin on the south, and Main on the west) which separate the commercial and residential areas of town. The portions within this area which have been omitted contain non-adjacent and non-clustered commercial buildings from a later period or scattered residential structures. The two buildings (16 and 17) dating from around 1940 were included because they adjoin another district structure, and though given this approximate date by local sources, maintain the appearance of the early-20th century buildings. At the western end of Washington Street, just a block away from the Tombigbee River, are four contributing structures, including three turn-of-the-century commercial buildings and a late-19th century residence, nominated because they are the only other cluster of period structures in the area. They were not joined to the main portion of the district originally because of a number of intrusions which drastically destroy the feeling of continuity. These intrusions have been included in the district.

The area forms an excellent visual representation of a small town commercial district, with the size, scale, and building material of the structures drawing them into a cohesive unit. The district is composed of an even distribution of one- and two-story structures, except for the Mayer Brothers-Robertson Banking Company (1) and a portion of the McClelland Block (49) which are three stories. The large majority of structures (82%) are brick or brick veneer, another significant group (12%) are brick faced with stucco, and the remainder (6%) are stone or frame. In the main portion of the district, the buildings are evenly spaced in portions of a five-block area, with only an occasional alley or vacant lot dividing them.

FHR-8-300A
(11/78)

UNITED STATES DEPARTMENT OF THE INTERIOR
HERITAGE CONSERVATION AND RECREATION SERVICE

**NATIONAL REGISTER OF HISTORIC PLACES
INVENTORY -- NOMINATION FORM**

FOR HCRS USE ONLY

RECEIVED

DATE ENTERED

CONTINUATION SHEET

ITEM NUMBER 2

PAGE 1

The area is roughly bounded by Capitol Street on the north, Cedar Avenue on the east, Franklin Street on the south, and Desnonette Avenue on the west.

UNITED STATES DEPARTMENT OF THE INTERIOR
NATIONAL PARK SERVICE

FOR NPS USE ONLY

RECEIVED MAR 7 1979

DATE ENTERED

NATIONAL REGISTER OF HISTORIC PLACES
INVENTORY -- NOMINATION FORM

CONTINUATION SHEET

ITEM NUMBER 4

PAGE 1

Robertson Banking Company
P. O. Box 429
Demopolis, Alabama

Mr. and Mrs. W. C. Eppes
1864 Robinson Hill Road
Montgomery, Alabama 36104

T. M. Culpepper
P. O. Box 610
Demopolis, Alabama

M. G. McCants
P. O. Box 768
Demopolis, Alabama

Bates Bell
207 West Decatur Street
Demopolis, Alabama

Mrs. Margaret D. Parker
110 Lake Lane
Demopolis, Alabama

Commercial National Bank
P. O. Drawer 280
Demopolis, Alabama

C. E. Allen, Jr., Guardian
Mary Elizabeth Allen
Route 1, Box 276
Gallion, Alabama 36742

George Williams
101 West Capitol Street
Demopolis, Alabama

Mrs. Vera C. Armstead
500 B. North Main Street
Demopolis, Alabama

Bert Rosenbush
Route 1, Box 159
Demopolis, Alabama

Don McGee
P. O. Box 506
Demopolis, Alabama

Mrs. W. P. Breen
P. O. Box 141
Demopolis, Alabama

John C. Webb Estate
P. O. Drawer 10
Demopolis, Alabama

Jimmy Dollar
P. O. Box 932
Demopolis, Alabama

John Selby
306 North 90th Street
Birmingham, Alabama 35206

J. T. Johnson
P. O. Box 793
Demopolis, Alabama

Ronald Kolter
3237 Ridgley Drive
Birmingham 35243

Mrs. Sarah L. Eastman
3531 Bridlewood Drive
Montgomery, Alabama 36111

Mrs. Nettie Richards
P. O. Box 1127
Montgomery, Alabama 36102

UNITED STATES DEPARTMENT OF THE INTERIOR
NATIONAL PARK SERVICE

**NATIONAL REGISTER OF HISTORIC PLACES
INVENTORY -- NOMINATION FORM**

FOR NPS USE ONLY

RECEIVED MAR 7 1979

DATE ENTERED

CONTINUATION SHEET

ITEM NUMBER 4 PAGE 2

J. Brock McLeod
P. O. Drawer M
Demopolis, Alabama

Don Lowe
P. O. Box 428
Demopolis, Alabama

Ralph Froshin
Froshin's Department Store
68 Broad Street
Alexander City, Alabama 35010

Milton Long Estate
c/o Mrs. Helen Levi
3384 McGehee Road
Montgomery, Alabama 36111

Milton Long Estate
c/o Mrs. Harold Marx
1465 Claibourne Towers
Canal Street
New Orleans, Louisiana 70100

David Lett
The Cove
Demopolis, Alabama

Dr. William Hill
Clover Ridge Drive
Demopolis, Alabama

Arthur Cole
P. O. Box 164
Demopolis, Alabama

Ed Kyser
P. O. Box 340
Demopolis, Alabama

Wallace Raines
1104 Lake Lane
Demopolis, Alabama

W. H. Traeger
P. O. Box 135
Demopolis, Alabama

Mrs. Robert Jones, Sr.
807 East Jackson Street
Demopolis, Alabama

Clinkscales, Webb and Miller
P. O. Box 747
Demopolis, Alabama

Cox Webb
801 South Main Street
Demopolis, Alabama

Will Moore
403 South Ash Street
Demopolis, Alabama

Emanuel Coleman
402 East Perry Street
Demopolis, Alabama

Henry Webb
Capitol Street
Demopolis, Alabama

Mem Stewart Webb
c/o Webb Studio
Washington Street
Demopolis, Alabama

Wayne Williamson
Box 1
Gallion, Alabama 36742

HR-8-300A
11/78)

UNITED STATES DEPARTMENT OF THE INTERIOR
HERITAGE CONSERVATION AND RECREATION SERVICE

**NATIONAL REGISTER OF HISTORIC PLACES
INVENTORY -- NOMINATION FORM**

FOR HCRS USE ONLY

RECEIVED

DATE ENTERED

CONTINUATION SHEET

ITEM NUMBER 4

PAGE 3

Mr. and Mrs. Ben George
400 South Strawberry Street
Demopolis, Alabama

THE ZIP CODE FOR DEMOPOLIS, ALABAMA
IS 36732

Braswell, Inc.
c/o Mr. Cruise Braswell
Drawer B
Demopolis, Alabama

City of Demopolis
(Mayor Hugh Allen, Jr.)
P. O. Box 580
Demopolis, Alabama
(Owner of previously registered Confederate
Park)

Mrs. C. S. Reynolds
P. O. Box 216
Demopolis, Alabama

Mrs. James W. Bird
RFD 1, Box 311
Forkland, Alabama 36740

Homer Tierce
211 Washington
Demopolis, Alabama

T. M. Culpepper, III
address already given

Wayne Williamson
1904 Marengo Drive
Demopolis, Alabama

Mrs. Leslie Crockette
209 South Walnut Street
Demopolis, Alabama

Mrs. W. C. Glover
Southmont Drive
Demopolis, Alabama

Howard Parr
Chevron Oil Station
Highway 80
Demopolis, Alabama

UNITED STATES DEPARTMENT OF THE INTERIOR
NATIONAL PARK SERVICE

**NATIONAL REGISTER OF HISTORIC PLACES
INVENTORY -- NOMINATION FORM**

FOR NPS USE ONLY

RECEIVED MAR 7 1979

DATE ENTERED

CONTINUATION SHEET

ITEM NUMBER 7 PAGE 1

Architecturally, the structures bear distinctive details depicting the various period styles as well as the ongoing physical development of the town. Those from the early period (1867-1872) are generally noted for their simple decorative elements, such as dentilled cornices, segmental and round arches, and cast iron posts. The Ace Hardware Stores (24 and 25) and the A. W. Cooper Dry Goods Store (33) are good examples from this group.

The large number of structures (31) built during the late 19th century (1880-1889) are generally characterized by their elaborate Victorian decorative features or their impressive size. In the smaller structures, this ranges from the segmental parapets of the Jeans & Things building (10) to the ornamental brickwork and Palladian window of the McGrath Building (27). In addition, the five-bay McClelland Block (49) and the three-story Mayer Brothers-Robertson Banking Company (1) are excellent examples of the period's tendency toward extravagant size.

The early 20th century structures, for the most part, retain some of the Victorian features, such as parapets and arches, but they are given a restrained rather than ornate treatment. Most of them (structures 14-15 and 18-22) are clustered at the eastern end of the district, as this was the last area of town to be developed.

Of the five structures which were built or altered after 1930, only three fail to blend into the district. The two buildings (16 and 17) dating from around 1940 retain the simple, clear cut lines of the early 20th century buildings and, therefore, are considered to be contributing elements. However, the alteration of the Alabama Employment Office (5) in the 1950's destroyed its period appearance, though not to a detractive degree. Since it maintains the scale of the other buildings, it has been categorized as non-contributing rather than intrusive. Though other structures have been given modern display windows or facade coverings, these alterations do not destroy their architectural integrity. A number of property owners have recently expressed an interest in returning their structures to their original appearances. The Merchants Grocery Company-Rosenbush Furniture building (44) is a particularly impressive example of a restoration which was completed in January, 1979.

UNITED STATES DEPARTMENT OF THE INTERIOR
NATIONAL PARK SERVICE

**NATIONAL REGISTER OF HISTORIC PLACES
INVENTORY -- NOMINATION FORM**

FOR NPS USE ONLY

RECEIVED MAR 7 1979

DATE ENTERED

CONTINUATION SHEET

ITEM NUMBER 7 PAGE 2

STRUCTURES WHICH CONTRIBUTE TO THE CHARACTER OF THE DISTRICT:

1. Mayer Brothers-Robertson Banking Company (North Walnut Avenue): 1897; 3 stories, brick, 3-bay facade; slight Sullivanesque influence appears in the vertical divisions of the windows, the semi-circular stilted arches, and the terra cotta ornamentation of the arches and medallions; one-story classical gallery, broken-pedimented entrance, and multi-pane windows are the result of 1975 renovations.
2. Mayer Brothers-Culpepper Electric Company (North Walnut Avenue): 1897; 2 stories, brick, 4-bay facade, prominent stone lintels and sills; 2nd-story balcony, multi-pane windows, and ground-floor alterations are the result of 1975 renovations.
3. Mayer Brothers-Spight's (North Walnut Avenue): 1900; 2 stories, brick, 5-bay facade, segmental-arched elongated windows; remodeled 1977.
4. Eddins Realty (North Walnut Avenue): c. 1900; 2 stories, stone, 3-bay facade, recessed entrance, oversized transom.
6. John F. Taylor Law Office (North Walnut Avenue): 1894; 2 stories, brick, 3-bay facade, decorative brick cornice, decorative window caps, oversized transom.
7. George Building-Cato's (East Washington Street): 1880; 2 stories, brick faced with stucco, 7-bay facade, segmental-arched windows and parapet; entrance remodeled.
8. Knight's Ladies Fashions and Yelverton T.V. Service (East Washington Street): c. 1881; 1 story, brick, 2 bays, recessed entrance; entrance remodeled.
9. David Lee's (East Washington Street): c. 1880; 1 story, brick faced with stucco, 2 bays, 2 recessed entrances; facade remodeled c. 1940.
10. Jeans and Things (East Washington Street): c. 1892; 1 story, brick, single bay, segmental-arched parapet; facade remodeled.

UNITED STATES DEPARTMENT OF THE INTERIOR
NATIONAL PARK SERVICE

**NATIONAL REGISTER OF HISTORIC PLACES
INVENTORY -- NOMINATION FORM**

FOR NPS USE ONLY
RECEIVED MAR 7 1979
DATE ENTERED

CONTINUATION SHEET

ITEM NUMBER 7

PAGE 3

11. Business Equipment (East Washington Street): c. 1892; 1 story, brick, single bay, segmental-arched parapet; facade remodeled.
12. Dr. William Hill Office and Hairoscope Unisex Hair Styles (East Washington Street): c. 1892; 1 story, brick faced with stucco, single bay; facade remodeled.
13. Cole Jewelry (East Washington Street): c. 1892; 1 story, brick, single bay, decorative brick cornice, large transom.
14. Levy's (East Washington Street): 1928; 2 stories, brick; 3 major bays, flat parapet, plain stone trim surrounding second floor windows, recessed entrances; entrance remodeled.
15. Demopolis Printing Company (North Strawberry Avenue): c. 1900; 1 story, brick faced with stucco, 4-bay facade, segmental-arched windows and door.
16. Vacant Structure (North Strawberry Avenue): c. 1940; 1 story, brick, 2-bay facade.
17. Fred's Annex (North Strawberry Avenue): c. 1940; 1 story, brick, single bay, recessed entrance.
18. Fred's (East Washington Street): c. 1916; 2 stories, brick, 3-bay facade, pedimented parapet, semi-circular arch at attic level of center bay, flat-headed windows; entrance remodeled.
19. Fred's (East Washington Street): c. 1924; 1 story, brick, pedimented parapet; entrance remodeled.
20. Fred's (East Washington Street): c. 1924; 1 story, brick, flat roof, facade bricked over.
21. Poe's Electronic Parts Company (East Washington Street): c. 1918; 2 stories, brick, recessed corner entrance with pressed-tin ceiling, flat-headed windows, brick cornice, stone sills and stringcourse.

UNITED STATES DEPARTMENT OF THE INTERIOR
NATIONAL PARK SERVICE

**NATIONAL REGISTER OF HISTORIC PLACES
INVENTORY -- NOMINATION FORM**

FOR NPS USE ONLY
RECEIVED <u>7</u> 1979
DATE ENTERED

CONTINUATION SHEET

ITEM NUMBER 7 PAGE 4

22. Pepsi Cola Warehouse (East Washington Street): c. 1924; 1 story, brick faced with stucco, 3-bay facade, flat parapet; ground floor entrance remodeled.
23. Reffett's and O.K. Barber Shop (North Strawberry Avenue): 1872; 2 stories, brick, 7-bay facade; facade and 4 of 10 sidebays re-bricked c. 1930; entrance remodeled.
24. Ace Hardware (North Strawberry Avenue): 1869; 2 stories, brick faced with stucco, 4-bay facade, second floor windows covered, oversized transom, free-standing cast-iron posts, suspended awning.
25. Ace Hardware (North Strawberry Avenue): 1869; 2 stories, brick, 4-bay facade, decorative brick cornice, second floor windows covered, oversized transom, recessed entrance, suspended awning.
26. Traeger's Bakery (North Strawberry Avenue): c. 1898; 2 stories, brick, 2 major bays, segmental-arched windows, decorative brick cornice, 2 entrances, slight S-curved shed-awning.
27. McGrath Building (North Strawberry Avenue): 1896; 2 stories, brick, 3-bay facade, parapet with entablature, decorative brick cornice, Palladian window at second floor, oversized transom, recessed entrance, S-curved shed awning; currently vacant.
28. Vacant Structure (North Strawberry Avenue): c. 1898; 1 story, brick, 4 bays, decorative brick cornice, shed awning.
29. Vacant Structure (North Strawberry Avenue): c. 1898; 1 story, brick, 2 bays, shed awning.
30. Coleman Cleaners (North Strawberry Avenue): c. 1867; 1 story, brick, single bay, segmental-arched entrance.
31. Strawberry Hill Restaurant, Wigs and Gifts, Vacant Structure, and Coleman Cleaners (North Strawberry Avenue): c. 1867; 1 story, brick, 4 major bays, dentilled cornice, shed awning over 3 bays.

UNITED STATES DEPARTMENT OF THE INTERIOR
NATIONAL PARK SERVICE

NATIONAL REGISTER OF HISTORIC PLACES
INVENTORY -- NOMINATION FORM

FOR NPS USE ONLY

RECEIVED 7 1979

DATE ENTERED

CONTINUATION SHEET

ITEM NUMBER 7

PAGE 5

32. Pat's Appliances (North Strawberry Avenue): 1867; 1 story, brick, 2 bays, dentilled cornice, recessed entrance, slight S-curved awning.
33. A. W. Cooper Dry Goods and Groceries (North Strawberry Avenue): c. 1867; 2 stories, brick, decorative brick cornice, segmental-arched window and door at second level, entrance covered; currently vacant.
34. Bailey Drug Store-Froshin's (East Washington Street): c. 1870; 2 stories, brick; facade remodeled.
35. Lowe Jewelry and Froshin's (East Washington Street): c. 1884; 1 story, brick, 2 bays; facade remodeled.
36. Fashion Fabrics and Western Auto (East Washington Street): c. 1884; 1 story, brick, 3 bays, decorative brick cornice; entrance remodeled.
37. Parr Building-Spight's (East Washington Street): c. 1884; 1 story, brick, 2-bay facade, large recessed panels at attic level, dentilled cornice, second floor destroyed by fire 1929; entrance remodeled.
38. Parr Building-Spight's (East Washington Street): c. 1884; 2 stories, brick, 4-bay facade, decorative brick parapet and moulding, slender pilasters surround flat-headed windows; entrance remodeled.
39. Webb Building-Braswell Hardware (East Washington Street): 1909; 2 stories, brick, decorative brick cornice, segmental-arched windows; original parapet removed; entrance remodeled.
40. Marx Building-Robertson Banking Company-Trade and Traffic (East Washington Street): c. 1884; 2 stories, brick; pedimented parapet and two Doric columns in antis added 1925; entrance remodeled.
41. Marx Warehouse (North Walnut Avenue): c. 1884; 2 stories, brick, 4-bay facade, segmental-arched windows and double door; currently vacant.
42. Marx Warehouse (North Walnut Avenue): c. 1884; 1 story, brick, 3-bay facade, segmental-arched windows and double door; currently vacant.

UNITED STATES DEPARTMENT OF THE INTERIOR
NATIONAL PARK SERVICE

**NATIONAL REGISTER OF HISTORIC PLACES
INVENTORY -- NOMINATION FORM**

FOR NPS USE ONLY

RECEIVED MAR 7 1979

DATE ENTERED

CONTINUATION SHEET

ITEM NUMBER 7

PAGE 6

43. Merchants Grocery Warehouse (North Walnut Avenue): c. 1896; 1 story, brick, 3 bays, pressed-tin ceiling on southern section; currently vacant.
44. Merchants Grocery Company-Rosenbush Furniture (North Walnut Avenue): c. 1896; 2 stories, brick, 3-bay facade, parapet, metal cornice, decorative brick moulding, segmental-arched windows, oversized transom; restoration completed January, 1979.
45. Allen-Norwood Building (West Washington Street): 1898; 2 stories, brick, 3-bay facade, modillioned and dentilled cornice; large elliptical arches, multi-pane windows and transoms at second level, large transom at ground level; currently occupied by Spiller Furniture Company and Rutledge Drugs.
46. Magnolia Flower Shop (West Washington Street): 1897; 2 stories, brick, 3-bay facade, decorative window caps, cornice, and medallions; entrance remodeled.
47. J.H. Jr.'s Factory Outlet (West Washington Street): c. 1897; 2 stories, brick, 3-bay facade, flat-headed windows and attic vents, decorative brick cornice; entrance remodeled.
48. Webb Studio (West Washington Street): 1897; 2 stories, brick, 3-bay facade, prominent lintels and sills surrounding second floor windows and attic vents; recessed entrance remodeled.
49. McClelland Block (West Washington Street): c. 1895; originally 2 stories, brick, 5 separate bays, original facade featured variety of decorative brick elements; 2 western bays drastically altered (possibly rebuilt) c. 1928, now 3 stories and faced with stucco; center and 2 eastern bays remain very nearly intact; currently occupied by Demopolis Inn, Demopolis Inn Barber Shop, Demopolis Inn Restaurant and McCant's Insurance, vacant section, and Breen Realty.

11/78)

UNITED STATES DEPARTMENT OF THE INTERIOR
HERITAGE CONSERVATION AND RECREATION SERVICE

FOR HCRS USE ONLY

RECEIVED

DATE ENTERED

NATIONAL REGISTER OF HISTORIC PLACES INVENTORY -- NOMINATION FORM

CONTINUATION SHEET

ITEM NUMBER 7

PAGE 7

50. Lyon-Tierce House (West Washington Street): c. 1891; 1 story, frame, 5-bay facade, pyramidal roof, center hipped-roof porch with four tapered wooden columns resting on brick piers, brick foundation, full basement.
51. Winn-Culpepper Warehouse (West Washington Street): c. 1894-late 1920's; four major one-story segments joining smaller two-story sections at center and eastern end, brick, panelled facade, segmental- and round-arched openings.
52. McKinley Carriage and Black Smith Shop (West Washington Street): c. 1909; one-story, two major bays, western section has concrete block supports and recessed tin panels, gabled roof, flat-headed floor-length windows; eastern section has brick siding, flat roof with panelled brick parapet, segmental-arched windows.
53. Bird Shop (West Washington Street): c. 1897; one-story brick commercial structure; drive-through section added on front c. 1924 for use as a service station; eastern half of this section closed-in.
54. Croquette Building (North Strawberry Street): early 20th century; one-story, brick, corbeled brick parapet, arched openings (Now H.R. Block).
- ✓55. Confederate Park (bounded by Main, Capitol, Walnut and Washington): this park was listed in the National Register of Historic Places 10/29/75.

NON-CONTRIBUTING STRUCTURES

5. Alabama Employment Office (North Walnut Avenue): 1907; two stories, stone, recessed entrance; renovations c. 1956 resulted in contrasting horizontal metal louvers and vertical rough-cut stone elements.
57. Chevron Oil Station (North Washington Street): c. 1940; one-story, concrete block, stucco.
58. J.M.W. Factory Outlet (West Washington Street): c. 1940; one-story, brick, with stucco, flat roof.

8 SIGNIFICANCE

PERIOD	AREAS OF SIGNIFICANCE -- CHECK AND JUSTIFY BELOW			
PREHISTORIC	<input type="checkbox"/> ARCHEOLOGY-PREHISTORIC	<input type="checkbox"/> COMMUNITY PLANNING	<input type="checkbox"/> LANDSCAPE ARCHITECTURE	<input type="checkbox"/> RELIGION
1400-1499	<input type="checkbox"/> ARCHEOLOGY-HISTORIC	<input type="checkbox"/> CONSERVATION	<input type="checkbox"/> LAW	<input type="checkbox"/> SCIENCE
1500-1599	<input type="checkbox"/> AGRICULTURE	<input type="checkbox"/> ECONOMICS	<input type="checkbox"/> LITERATURE	<input type="checkbox"/> SCULPTURE
1600-1699	<input checked="" type="checkbox"/> ARCHITECTURE	<input type="checkbox"/> EDUCATION	<input type="checkbox"/> MILITARY	<input type="checkbox"/> SOCIAL/HUMANITARIAN
1700-1799	<input type="checkbox"/> ART	<input type="checkbox"/> ENGINEERING	<input type="checkbox"/> MUSIC	<input type="checkbox"/> THEATER
1800-1899	<input checked="" type="checkbox"/> COMMERCE	<input type="checkbox"/> EXPLORATION/SETTLEMENT	<input type="checkbox"/> PHILOSOPHY	<input type="checkbox"/> TRANSPORTATION
1900-	<input type="checkbox"/> COMMUNICATIONS	<input type="checkbox"/> INDUSTRY	<input type="checkbox"/> POLITICS/GOVERNMENT	<input type="checkbox"/> OTHER (SPECIFY)
		<input type="checkbox"/> INVENTION		

SPECIFIC DATES 1867-1928

BUILDER/ARCHITECT

STATEMENT OF SIGNIFICANCE

As the principal trading center of Marengo County, Demopolis contains the area's most important commercial establishments. The business district, adjoining the east and south sides of Confederate Park (NRHP 10/29/75) encompasses 56 structures within portions of a seven-block area.

The buildings are primarily one- and two-story brick structures dating from around 1867 to 1940, with the majority of them depicting the late-19th century commercial style. In spite of some facade alterations, the district retains its period character, and several local businessmen have begun a movement to restore the structures to their original styles.

Demopolis is located in Marengo County, in the fertile Black Belt region of west-central Alabama. It was settled in 1818 by a group of 300 French refugees, who deserted the community within a year after learning that they had settled on the wrong tract of land. A group of Americans then occupied the site, and in 1819 they mapped the town in the north-south grid pattern that has been maintained to the present. Located at the confluence of the Warrior and Tombigbee rivers, Demopolis quickly emerged as a significant trading center during the ensuing plantation era. A number of antebellum structures remain in the town, though none of them are located in the business district.

With the economic upheaval of the Civil War, the town's commercial activity virtually halted. Trading gradually increased during the immediate post-war years, bringing a resulting increase in construction. Eight buildings, concentrated at the eastern end of the district along Strawberry Avenue, date from this period (1867-1872) and are generally characterized by their simple facade treatments. In addition, several businesses were established at this time which have continued to operate in modern times, though not in their original structures. These include the Braswell Hardware Store, the Mayer Brothers merchandising enterprise, the Robertson Banking Company, and the Demopolis Inn.

By the 1880's, the South had recovered from the economic unrest of the Civil War and Reconstruction years and entered a period of prosperity which lasted until the 1929 depression. The return of "good times" to Demopolis was evident by 1885,

FOR HCRS USE ONLY

RECEIVED

DATE ENTERED

**NATIONAL REGISTER OF HISTORIC PLACES
INVENTORY -- NOMINATION FORM**

CONTINUATION SHEET

ITEM NUMBER 8

PAGE 2

when the town enjoyed regularly scheduled steamboat and railroad transportation systems and the recently installed electricity and water works. More important, though, was the great change in the physical appearance of the downtown area during the two decades preceeding the turn of the century. Thirty-one buildings, forming the bulk of the district, remain from the period between 1880 and 1889. Generally characterized by their ornamental elements or their impressive size, they represent the ongoing significance of this rural community as a trading center and the Victorian period's tendency toward extravagance.

The economy continued to thrive into the late 1920's, with several structures (11) dating from after the turn of the century. 1928 marked the peak of the town's prosperity, with the construction of the large Levy's (14) store and the completion of a street paving program begun three years earlier. With the severe depression of 1929, though, commercial activity slowed to a standstill and many businesses closed for almost a decade.

The historic district has changed very little since 1928, with two structures built after that date maintaining the appearance of the older buildings and only two structures constructed which detract from the district. Other buildings have changed hands several times and had their ground floors modernized, but structural alterations have been minimal. Only one building, the Alabama Employment Office (5), has lost its period integrity to a contemporary facade. Today Demopolis continues to serve as the principal trading center for the surrounding agricultural area, and the district maintains the ambience of its most prosperous period.

9 MAJOR BIBLIOGRAPHICAL REFERENCES

- Birmingham News. September 7, 1903.
- Demopolis Express. January 24-April 4, 1895.
- Demopolis Press. Trade Edition, December, 1895.

10 GEOGRAPHICAL DATA

ACREAGE OF NOMINATED PROPERTY c. 17 acres

QUADRANGLE NAME Demopolis Quadrangle QUADRANGLE SCALE 1:24000

UTM REFERENCES

A	ZONE	EASTING	NORTHING	B	ZONE	EASTING	NORTHING
C				D			
E				F			
G				H			

VERBAL BOUNDARY DESCRIPTION

see continuation sheet.

LIST ALL STATES AND COUNTIES FOR PROPERTIES OVERLAPPING STATE OR COUNTY BOUNDARIES

STATE	CODE	COUNTY	CODE
STATE	CODE	COUNTY	CODE

11 FORM PREPARED BY

NAME / TITLE		DATE
Sally Moore		February 28, 1979
ORGANIZATION	STREET & NUMBER	TELEPHONE
Alabama Historical Commission	725 Monroe Street	(205) 832-6621
CITY OR TOWN	STATE	
Montgomery	Alabama	36130

12 STATE HISTORIC PRESERVATION OFFICER CERTIFICATION

THE EVALUATED SIGNIFICANCE OF THIS PROPERTY WITHIN THE STATE IS:

NATIONAL STATE LOCAL

As the designated State Historic Preservation Officer for the National Historic Preservation Act of 1966 (Public Law 89-665), I hereby nominate this property for inclusion in the National Register and certify that it has been evaluated according to the criteria and procedures set forth by the National Park Service.

STATE HISTORIC PRESERVATION OFFICER SIGNATURE Phil B. Howard Jr. DATE March 5, 1979

TITLE 2 HPO

FOR NPS USE ONLY	
I HEREBY CERTIFY THAT THIS PROPERTY IS INCLUDED IN THE NATIONAL REGISTER	
KEEPER OF THE NATIONAL REGISTER	DATE
ATTEST: CHIEF OF REGISTRATION	DATE

UNITED STATES DEPARTMENT OF THE INTERIOR
NATIONAL PARK SERVICE

**NATIONAL REGISTER OF HISTORIC PLACES
INVENTORY -- NOMINATION FORM**

FOR NPS USE ONLY

RECEIVED MAR 7 1979

DATE ENTERED

CONTINUATION SHEET

ITEM NUMBER 9

PAGE 2

Demopolis Times. Industrial Issue, October 13, 1910; Anniversary Edition,
January 5, 1956; October 14, 1967; July 17, 1975.

Hinson, Minnetta Kathryn. "The History of Marengo County, Alabama." Unpublished
pamphlet, University of Alabama, November 23, 1944.

Montgomery Advertiser-Journal. Alabama Sunday Magazine, October 15, 1967.

Montgomery Alabama Journal. March 8, 1941.

Owen, Thomas McAdory. History of Alabama and Dictionary of Alabama Biography,
Vols. I & II. Chicago: The S. J. Clarke Publishing Company, 1921.

Records of conveyance. Marengo County Courthouse, Linden, Alabama.

Sanborn Fire Insurance Maps. Demopolis, Alabama, 1891, 1897, 1903, 1909, 1924.

Selma Times-Journal. Centennial Edition, November 2, 1927.

Smith, Winston. "Early History of Demopolis." Alabama Review, April, 1956.

Tharin's Marengo County Directory for 1860-61. Reproduced by the Marengo County
Historical Society, Demopolis, Alabama, 1973.

FOR HCRS USE ONLY

RECEIVED

DATE ENTERED

**NATIONAL REGISTER OF HISTORIC PLACES
INVENTORY -- NOMINATION FORM**

CONTINUATION SHEET

ITEM NUMBER 10 PAGE 1

Beginning at the southeast corner of the intersection of Capitol Street and Walnut Avenue, proceed in an easterly direction approximately 150 feet along the southern boundary of Capitol Street; thence in a southerly direction approximately 145 feet along the rear property lines of the structures facing Walnut Avenue; thence in an easterly direction approximately 148 feet to the western boundary of Strawberry Avenue; thence in a southern direction approximately 15 feet along said boundary line; thence in an easterly direction approximately 136 feet; thence in a southerly direction approximately 205 feet to the southern boundary of Washington Street; thence in an easterly direction approximately 210 feet along said boundary line to the southwestern corner of the intersection of Washington and Cedar Avenue; thence in a southerly direction approximately 95 feet along the western boundary of Cedar Avenue; thence in a westerly direction approximately 150 feet along the rear property lines of the structures facing Washington Street; thence in a southerly direction approximately 200 feet along the rear property lines of the structures facing Strawberry Avenue to the northern boundary of Franklin Street; thence in a westerly direction approximately 145 feet along said boundary line to the northeastern corner of the intersection of Franklin and Strawberry; thence in a northerly direction approximately 59 feet along the eastern boundary of Strawberry Avenue; thence in a westerly direction approximately 208 feet; thence in a southerly direction approximately 60 feet along the rear property lines of the structures facing Walnut to the northern boundary of Franklin; thence in a westerly direction approximately 341 feet along said boundary line; thence in a northerly direction approximately 148 feet along the rear property lines of the structures facing Walnut; thence in a westerly direction approximately 145 feet along the rear property lines of the structures facing Washington to the eastern boundary of Main Avenue; thence in a northerly direction approximately 25 feet along said boundary line; thence in a westerly direction approximately 705 feet to the eastern boundary of Desnonette Avenue; thence in a northerly direction approximately 115 feet along said boundary line to the southeastern corner of the intersection of Desnonette and Washington, thence in an easterly direction approximately 328 feet along the southern boundary of Washington to the southeast corner of the intersection of Washington Street and Commissioners Avenue; thence in a northerly direction approximately 155 feet along the eastern boundary of Commissioners; thence in an easterly direction approximately 194 feet along the rear property lines of the structures facing Washington; thence in a southerly direction approximately 88 feet to the northern boundary of Washington; thence in an easterly direction approximately 90 feet to the northwest corner of the intersection of Main Avenue and Washington Street; thence in a northeasterly direction approximately 100 feet across Main Avenue to the northeast corner of the intersection of Main Avenue and Washington Street; thence in a northerly direction approximately 285 feet along the western boundary of Main Avenue to the southern boundary of Capitol Street; thence in an easterly direction approximately 350 feet along said boundary to the point of beginning.

HR-8-300A
11/78)

UNITED STATES DEPARTMENT OF THE INTERIOR
HERITAGE CONSERVATION AND RECREATION SERVICE

**NATIONAL REGISTER OF HISTORIC PLACES
INVENTORY -- NOMINATION FORM**

FOR HCRS USE ONLY

RECEIVED

DATE ENTERED

CONTINUATION SHEET

ITEM NUMBER 10 PAGE 2

	LATITUDE			LONGITUDE		
NW	32°	31'	5"	87°	50'	28"
NE	32°	31'	5"	87°	50'	6"
SE	32°	30'	58"	87°	50'	6"
SW	32°	30'	58"	87°	50'	28"

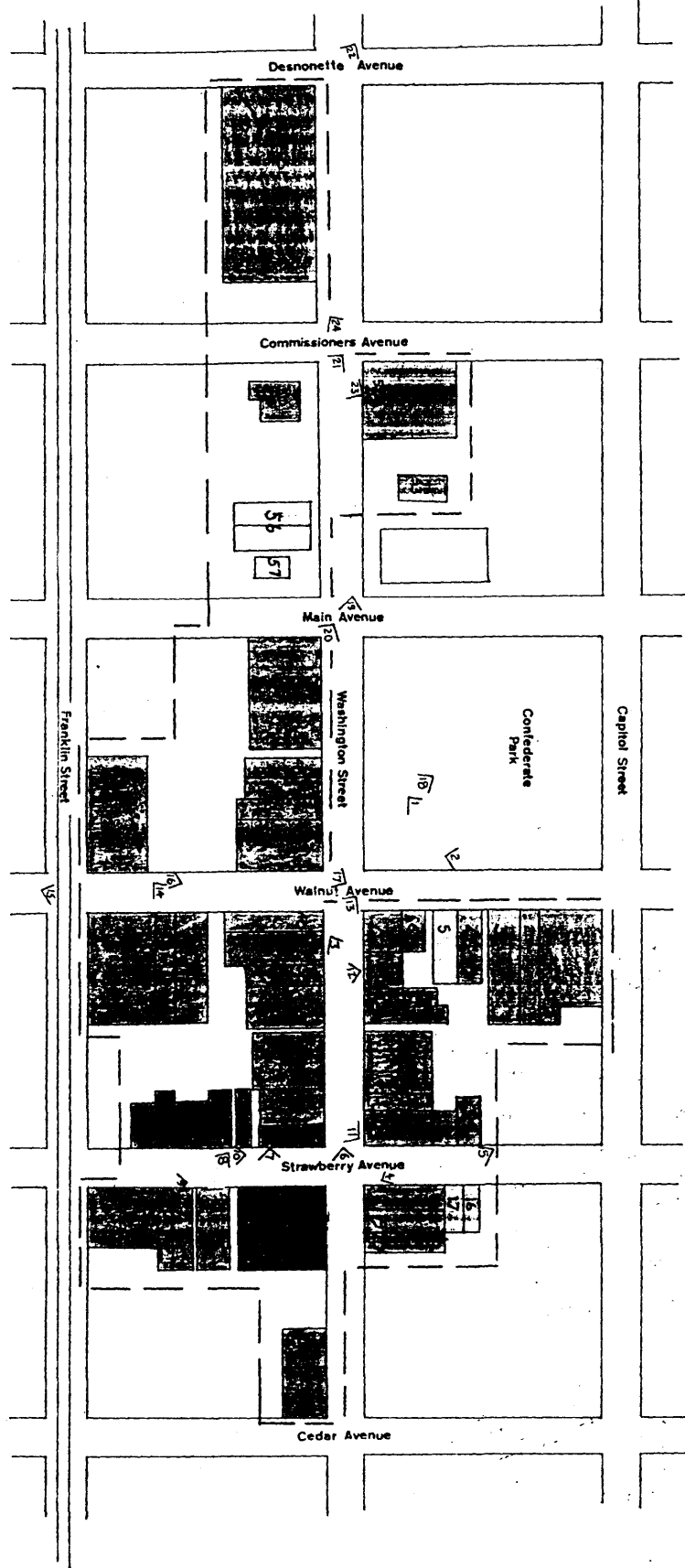


DEMOPOLIS HISTORIC BUSINESS DISTRICT

KEY

- 1867-1872
- ▨ 1880-1899
- ▩ 1900-1928
- 1930-Present
- Non-contributing

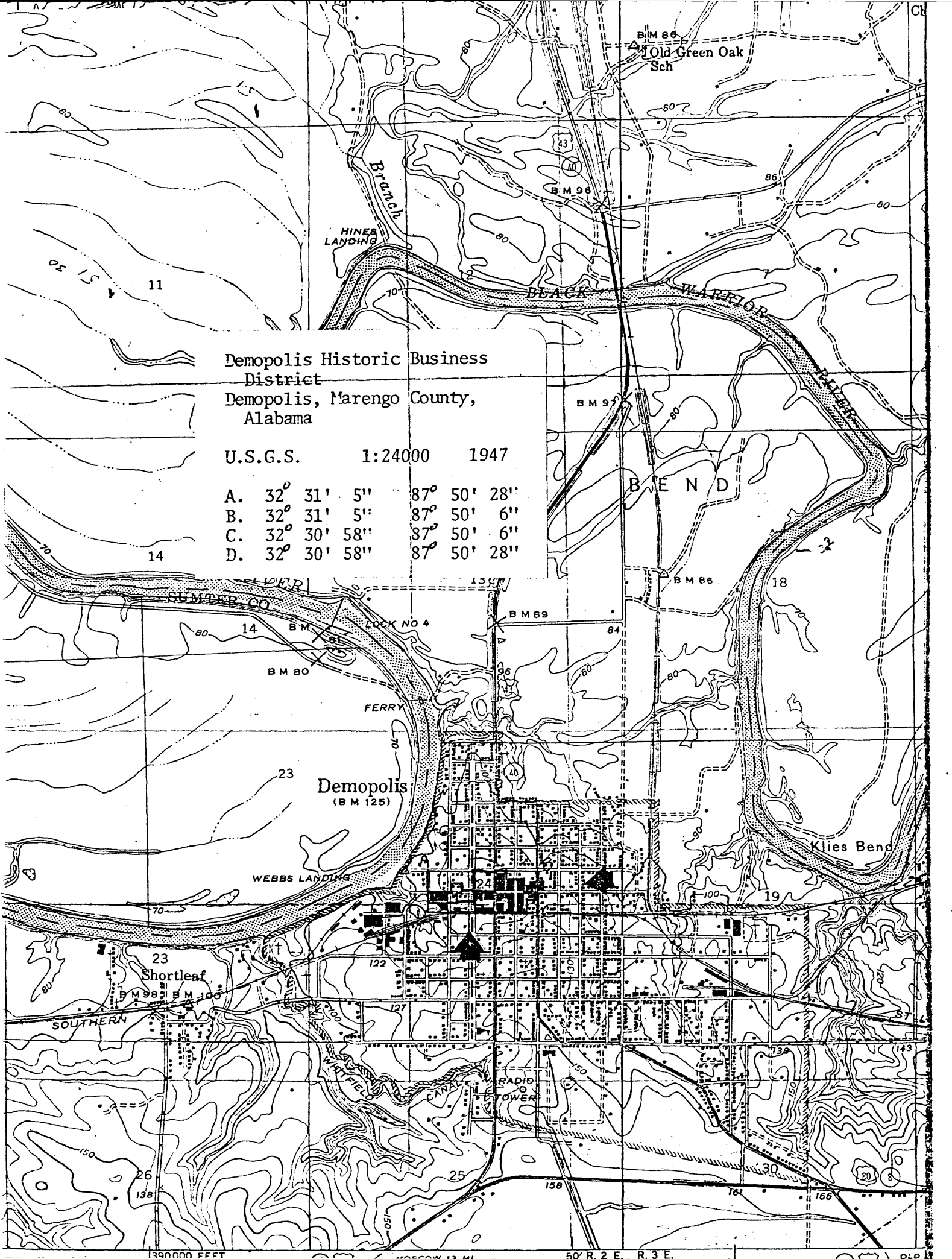
Source: Sanborn Map Co., 1924
Not to scale



Demopolis Historic Business District
 Demopolis, Marengo County,
 Alabama

U.S.G.S. 1:24000 1947

A.	32° 31' 5"	87° 50' 28"
B.	32° 31' 5"	87° 50' 6"
C.	32° 30' 58"	87° 50' 6"
D.	32° 30' 58"	87° 50' 28"





Demopolis Historic Business
District
Demopolis, Alabama, Marengo Co.

Ellen Mertins, March, 1978
Alabama Historical Commission

Structures 1-5, east side of
Walnut Avenue from southwest.

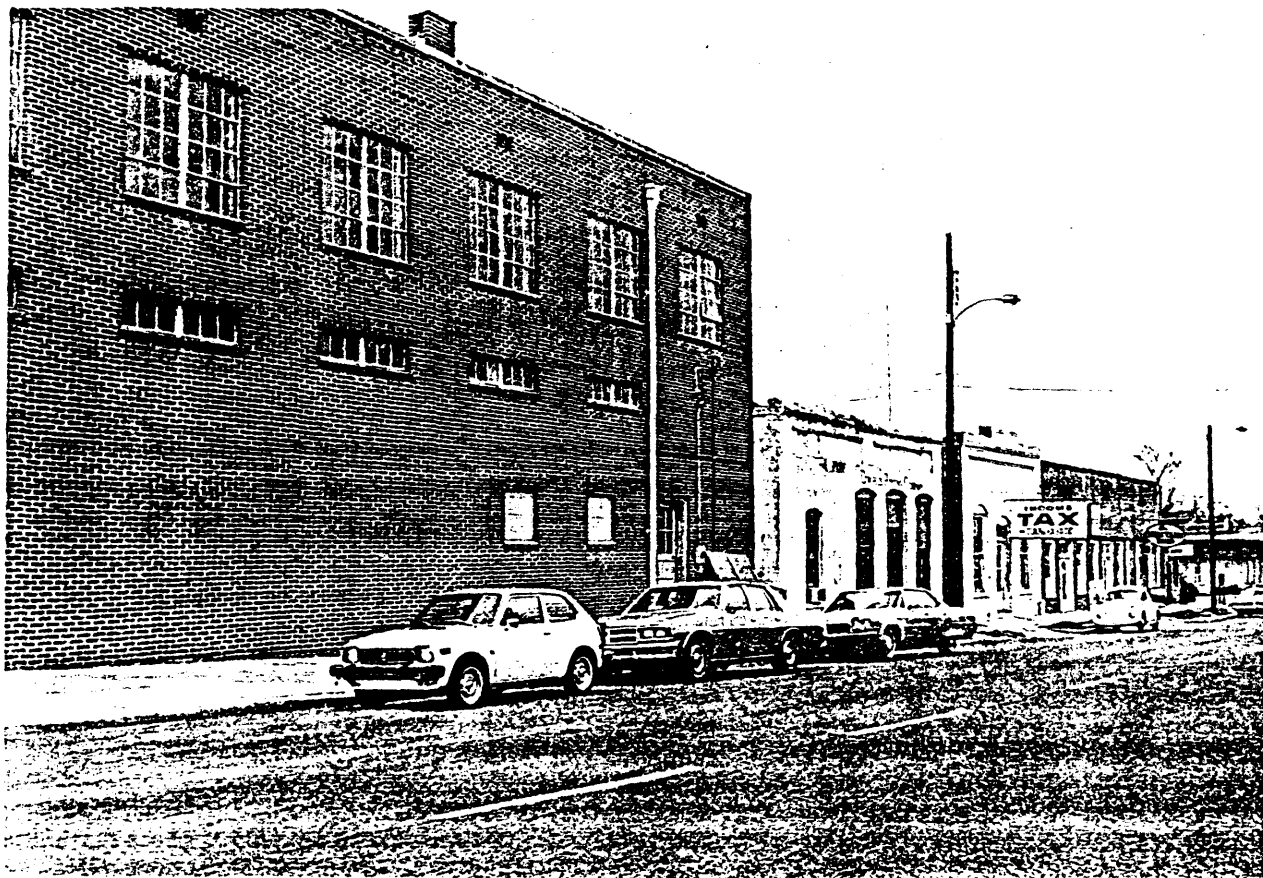
Photo number: 1

Demopolis Historic Business
District
Demopolis, Alabama, Marengo Co.

Ellen Mertins, March, 1978
Alabama Historical Commission

Structures 1-3, east side of
Walnut Avenue from the south.

Photo number: 2



Demopolis Historic Business
District
Demopolis, Alabama, Marengo Co.

Ellen Mertins, March, 1978
Alabama Historical Commission

Structures 8-14 and 18-20, north
side of Washington Street from
the southwest.

Photo number: 3

Demopolis Historic Business
District
Demopolis, Alabama, Marengo Co.

Ellen Mertins, March, 1978
Alabama Historical Commission

Demopolis Printing Company (15)
and east elevation of Levy's (14),
view from southeast. Also shows
structures on west side of
Strawberry Avenue which were
omitted from district.

Photo number: 4



3
Demopolis Historic Business
District
Demopolis, Alabama, Marengo Co.

Ellen Mertins, March, 1978
Alabama Historical Commission

Structures 16-18, east side of
Strawberry Avenue from the north-
west.

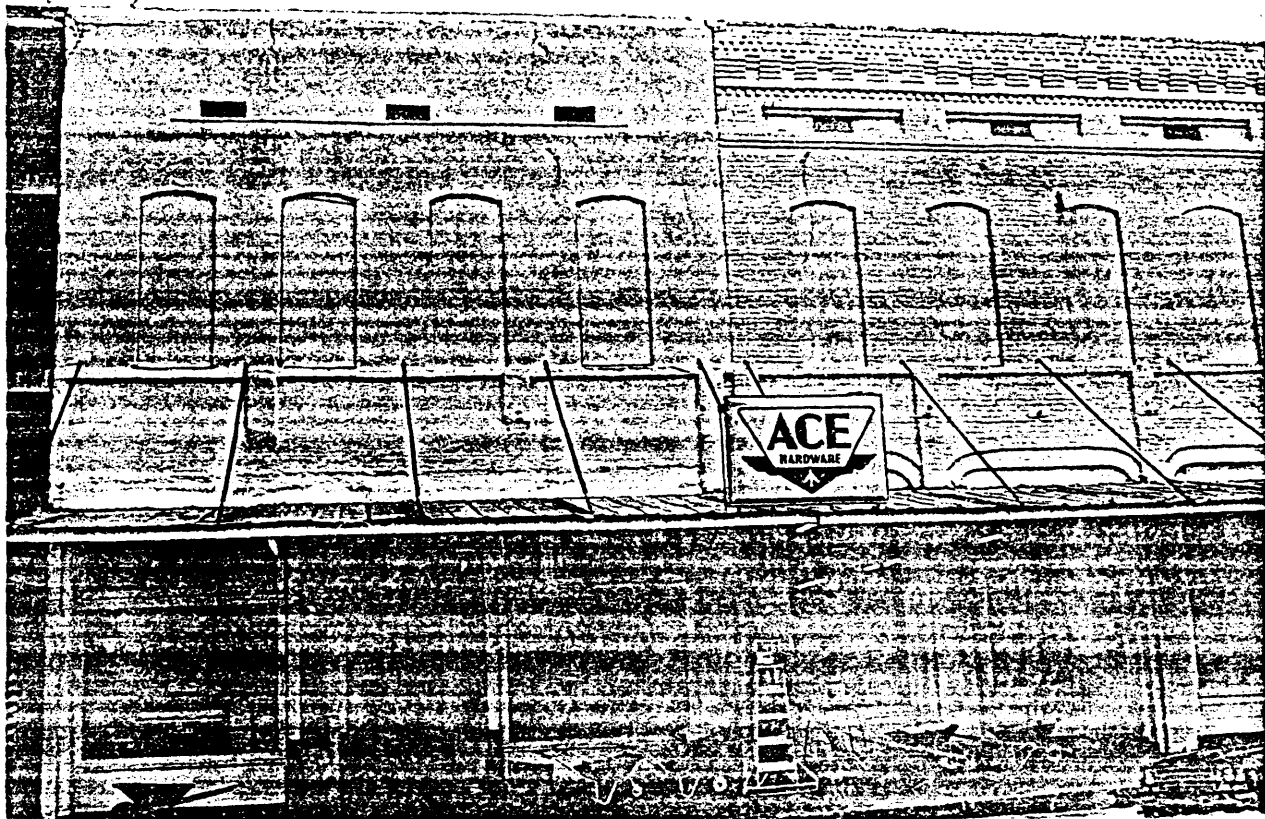
Photo number: 5

6
Demopolis Historic Business
District
Demopolis, Alabama, Marengo Co.

Ellen Mertins, March, 1978
Alabama Historical Commission

Structures 18-20 and 21-23, north
and south sides of Washington
Street from the west. Also shows
structures on north side of
Washington which were omitted
from district.

Photo number: 6



Demopolis Historic Business
District
Demopolis, Alabama, Marengo Co.

Ellen Mertins, March, 1978
Alabama Historical Commission

Ace Hardware Stores (24 and 25),
view from the west.

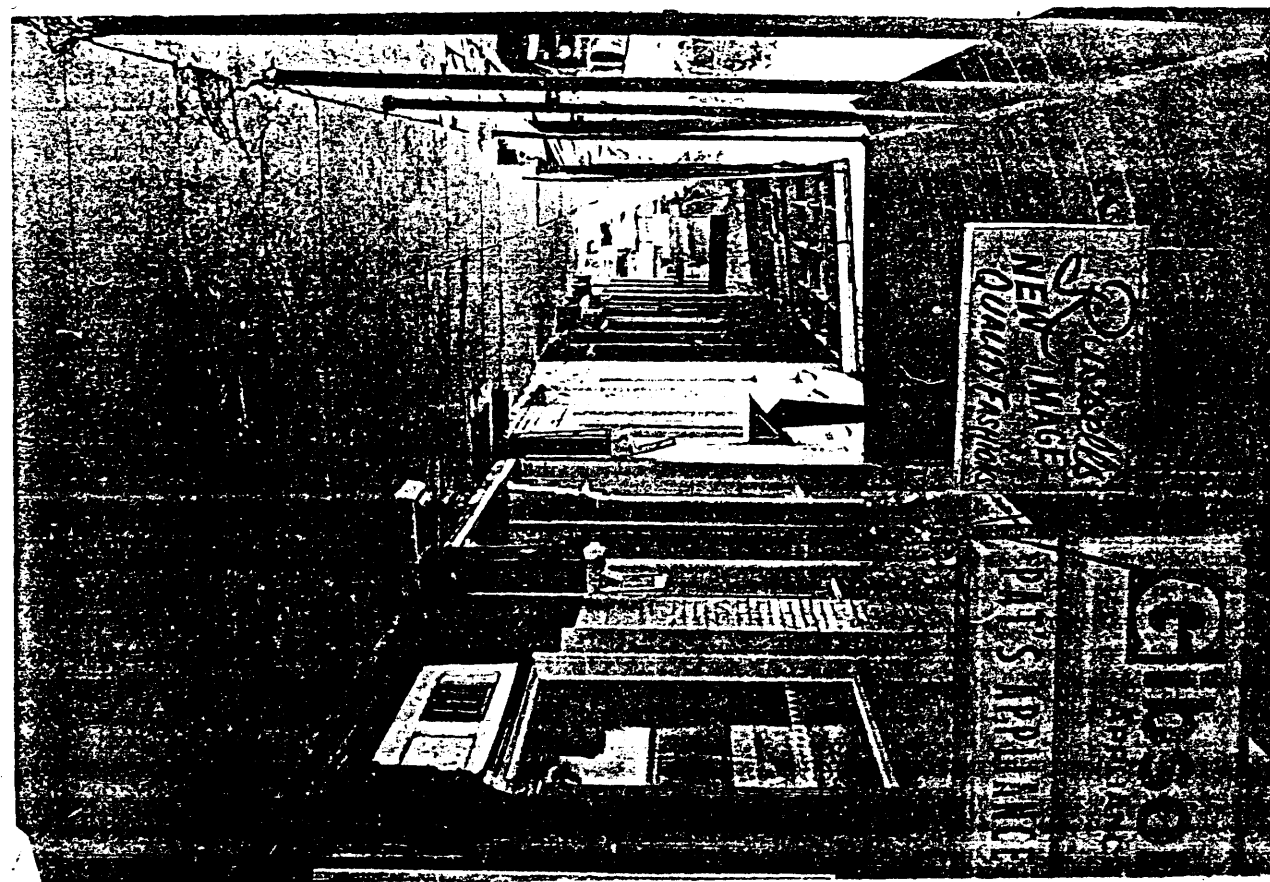
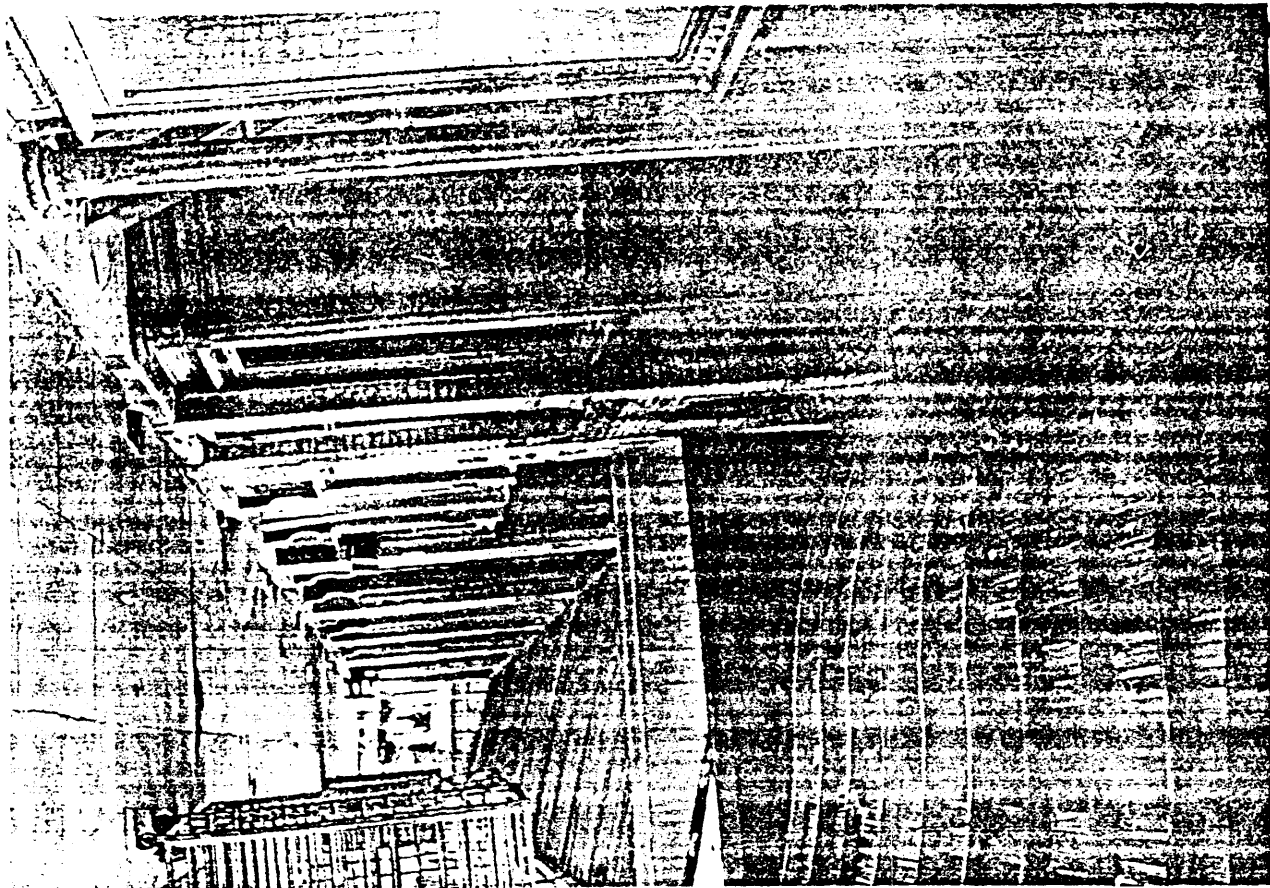
Photo number: 7

Demopolis Historic Business
District
Demopolis, Alabama, Marengo Co.

Ellen Mertins, March, 1978
Alabama Historical Commission

Traeger's Bakery (26), McGrath
Building (27), and vacant
structure (28), view from the
northwest.

Photo number: 8



Demopolis Historic Business
District
Demopolis, Alabama, Marengo Co.

Ellen Mertins, March, 1978
Alabama Historical Commission

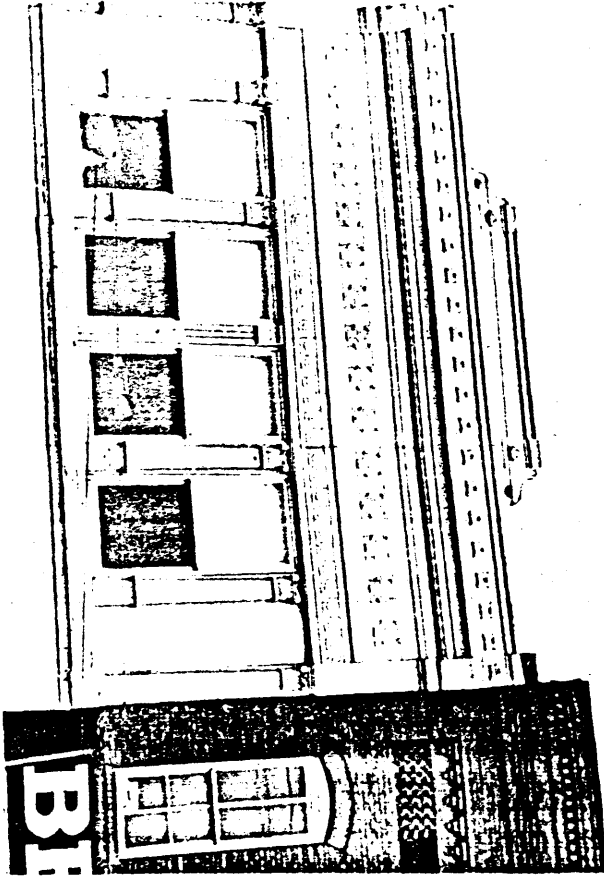
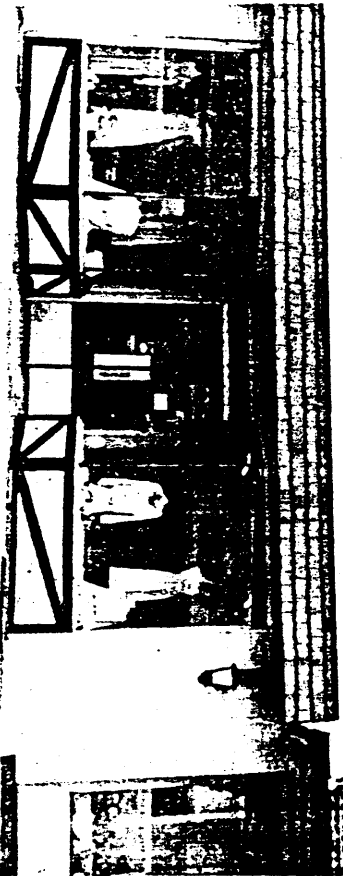
Structures 27-29, east side of
Strawberry Avenue from the north.
Photo number: 9

Demopolis Historic Business
District
Demopolis, Alabama, Marengo Co.

Ellen Mertins, March, 1978
Alabama Historical Commission

Structures 30-32, west side of
Strawberry Avenue from the north.

Photo number: 10



Demopolis Historic Business
District
Demopolis, Alabama, Marengo Co.

Ellen Mertins, March, 1978
Alabama Historical Commission

Structures 34-40 and 45-59, south
side of Washington Street from
the northeast.

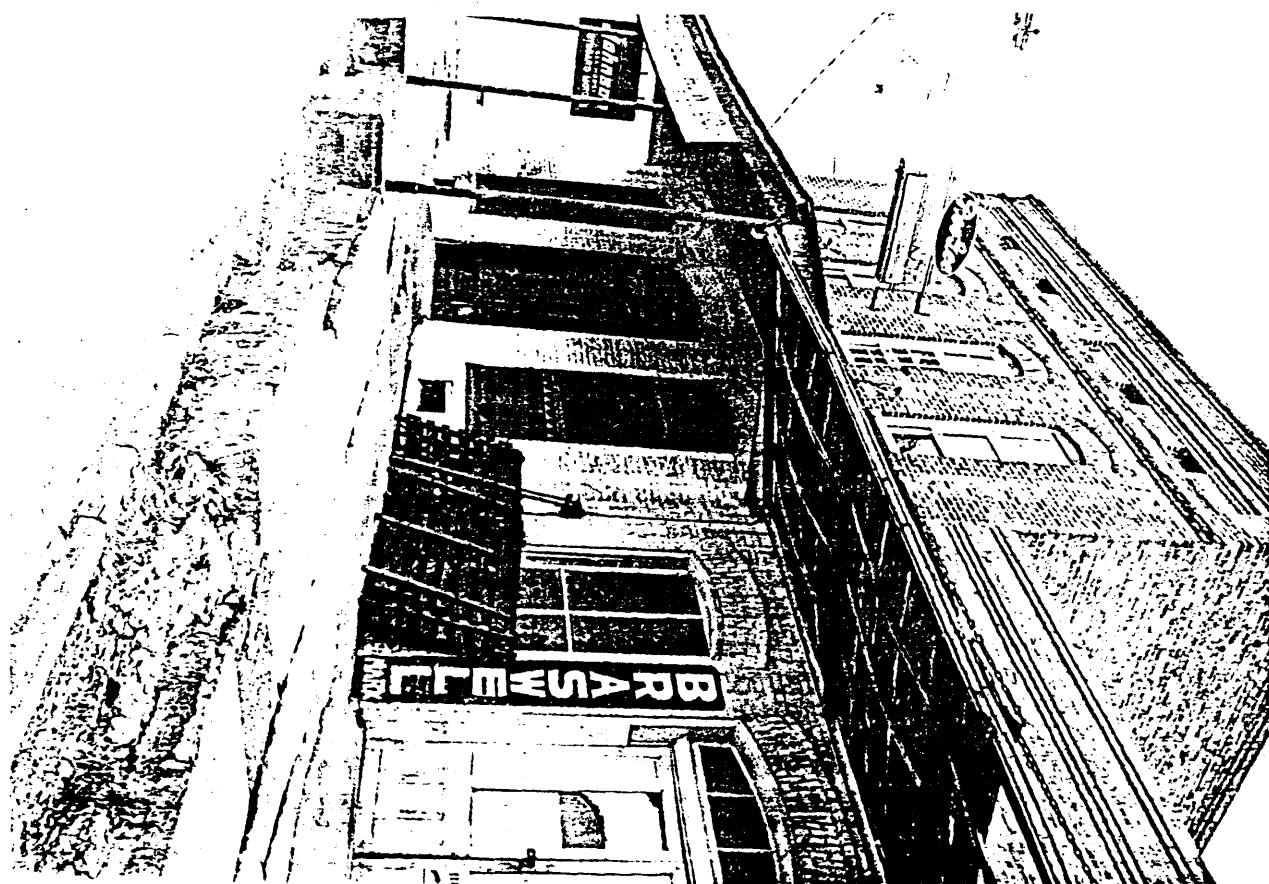
Photo number: 11

Demopolis Historic Business
District
Demopolis, Alabama, Marengo Co.

Ellen Mertins, March, 1978
Alabama Historical Commission

Parr Building-Spight's (38),
view from north.

Photo number: 12



Demopolis Historic Business
District
Demopolis, Alabama, Marengo Co.

Ellen Mertins, March, 1978
Alabama Historical Commission

Structures 36-40, south side of
Washington Street from the
northwest.

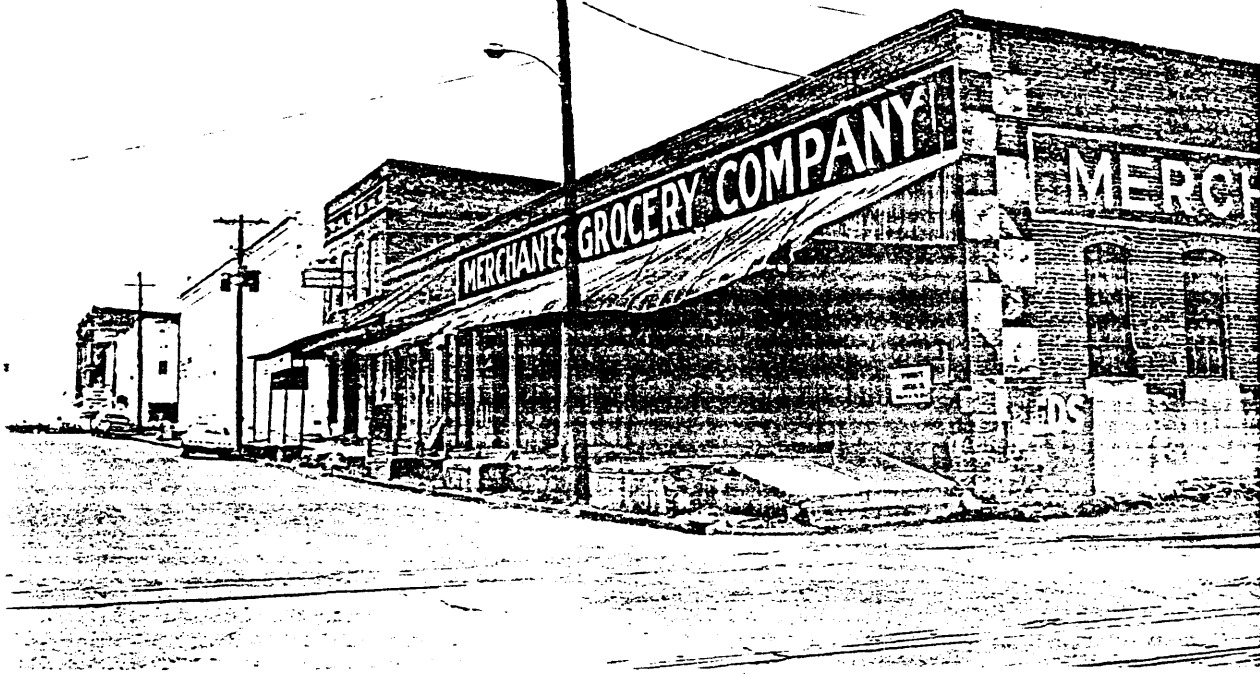
Photo number: 13

14
Demopolis Historic Business
District
Demopolis, Alabama, Marengo Co.

Ellen Mertins, March, 1978
Alabama Historical Commission

Marx Warehouses (41 and 42), view
from southwest.

Photo number: 14



Demopolis Historic Business
District
Demopolis, Alabama, Marengo Co.

Ellen Mertins, March, 1978
Alabama Historical Commission

Structures 40-43 and 1-7, east
side of Walnut Avenue from the
southwest.

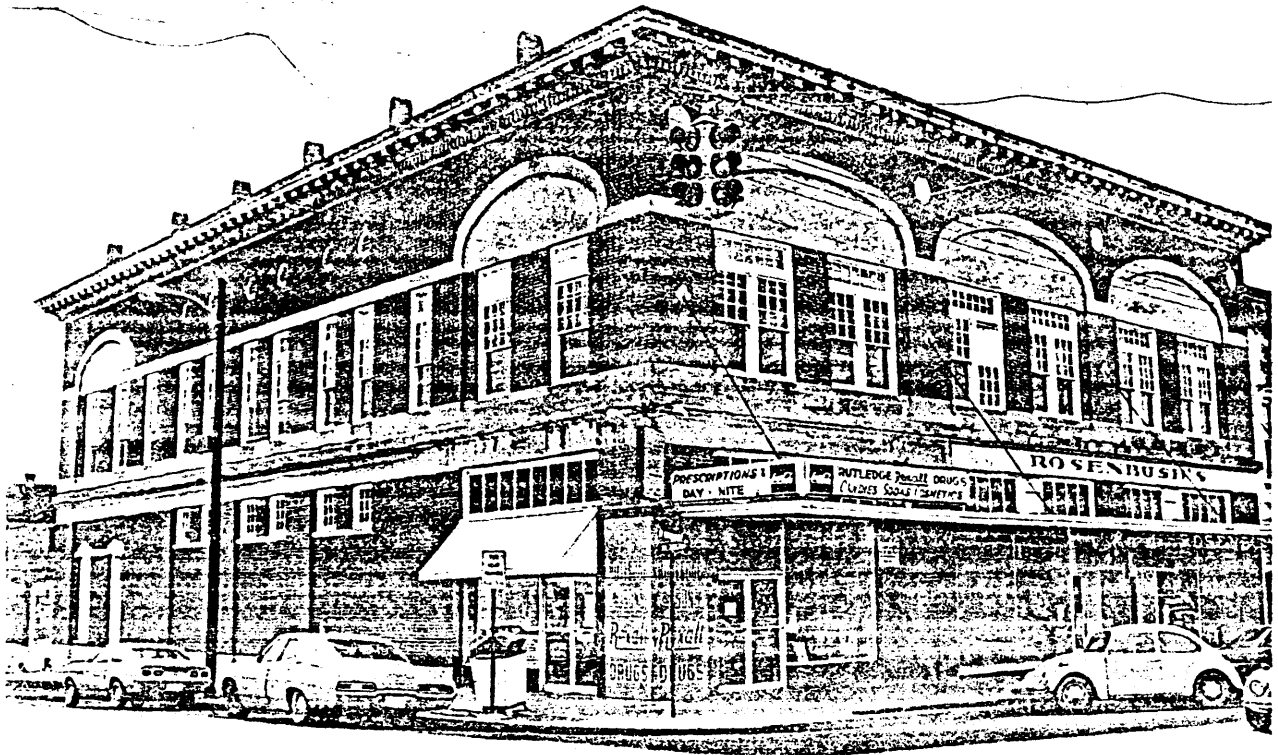
Photo number: 15

Demopolis Historic Business
District
Demopolis, Alabama, Marengo Co.

Ellen Mertins, March, 1978
Alabama Historical Commission

Merchants Grocery-Posenbush
Furniture (44), view from the
northeast.

Photo number: 16



Demopolis Historic Business
District
Demopolis, Alabama, Marengo Co.

Ellen Mertins, March, 1978
Alabama Historical Commission

Allen-Norwood Building (45),
view from the northeast.

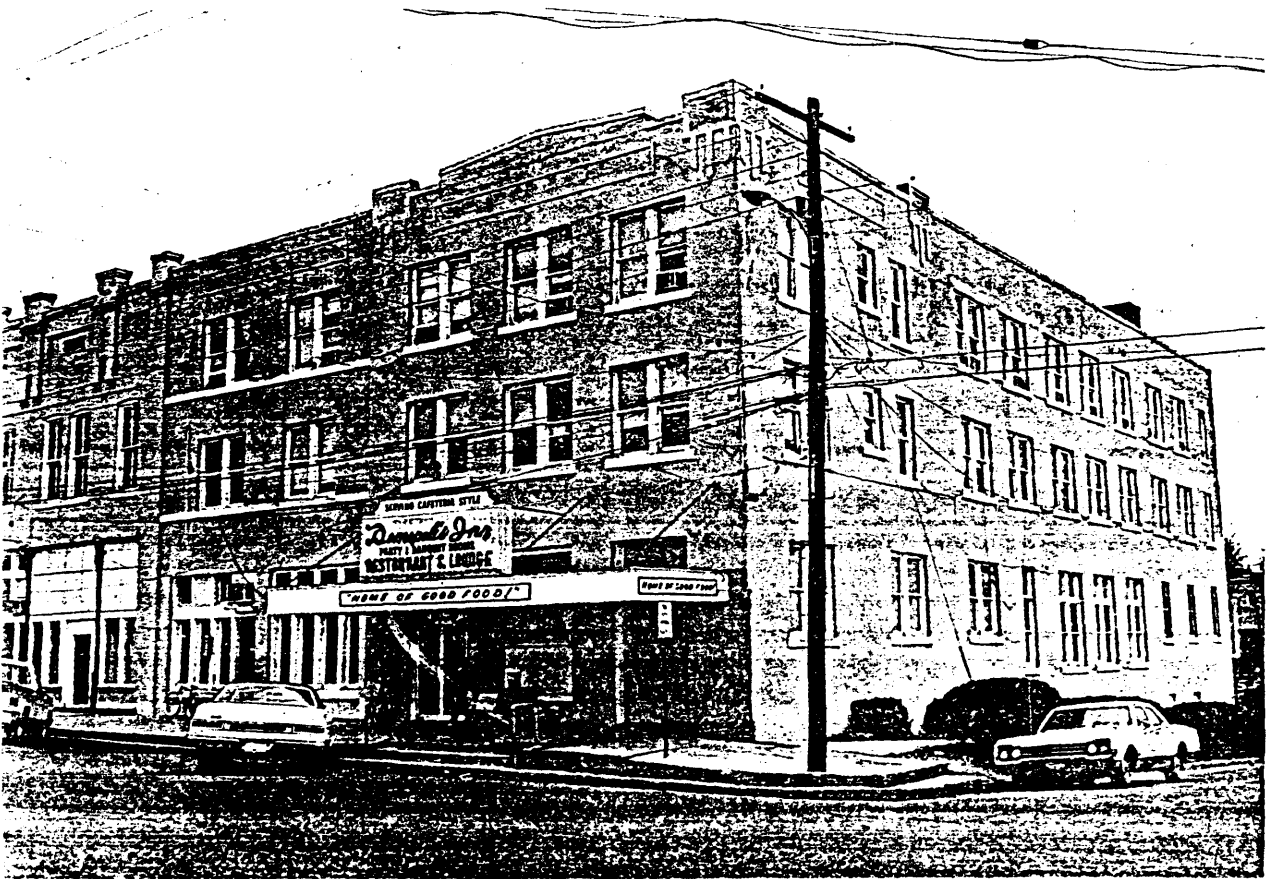
Photo number: 17

Demopolis Historic Business
District
Demopolis, Alabama, Marengo Co.

Ellen Mertins, March, 1978
Alabama Historical Commission

Structures 5-7, 36-40, and 45-47,
intersection of Walnut and
Washington taken from Confederate
Park, view from the northwest.

Photo number: 18



Demopolis Historic Business
District
Demopolis, Alabama, Marengo Co.

Ellen Mertins, March, 1978
Alabama Historical Commission

North and south sides of Washing-
ton Street taken at the
intersection of Washington and
Main, view from the east.

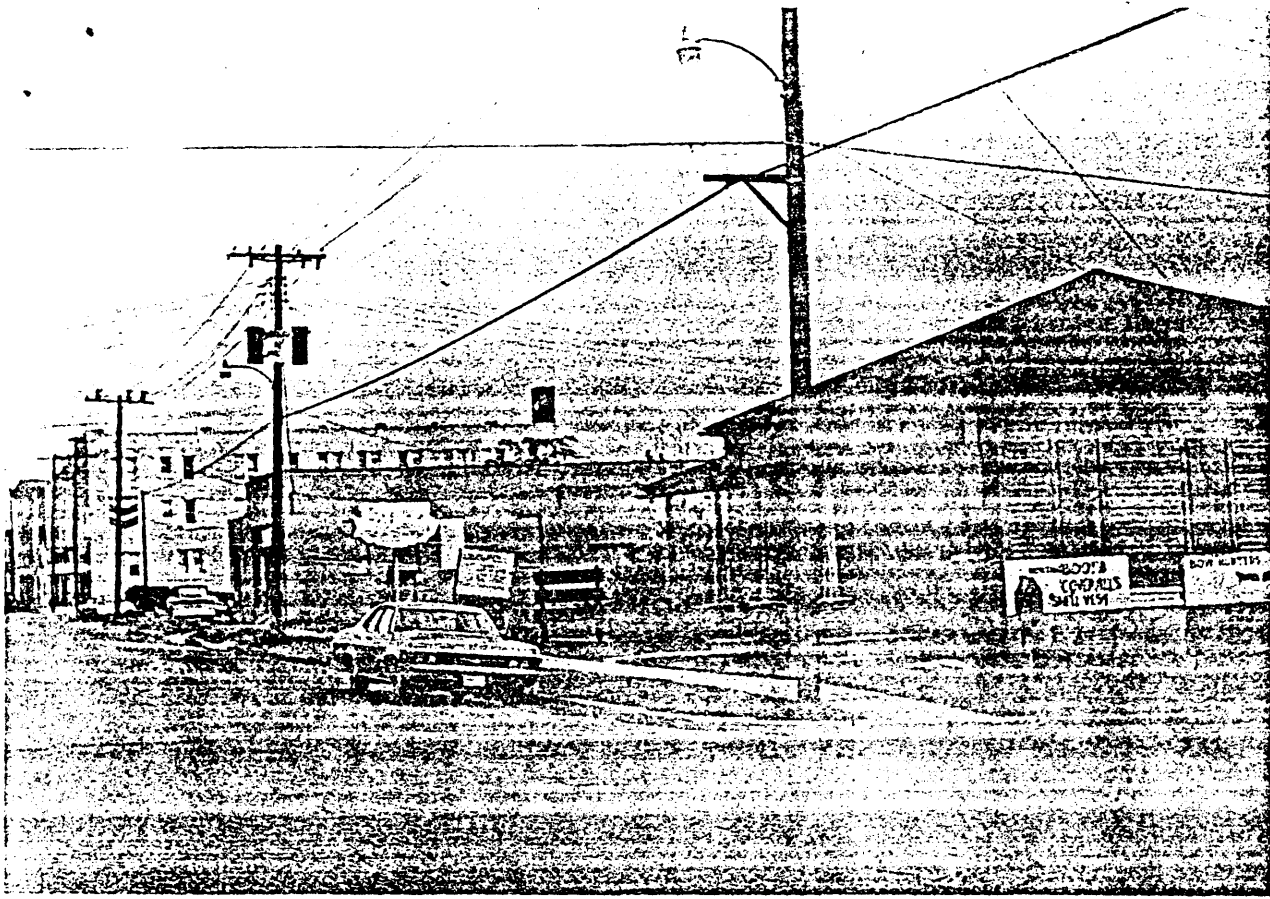
Photo number: 19

Demopolis Historic Business
District
Demopolis, Alabama, Marengo Co.

Ellen Mertins, March, 1978
Alabama Historical Commission

Western portion of McClelland
Block (49), view from the
northwest.

Photo number: 20



Demopolis Historic Business
District
Demopolis, Alabama, Marengo Co.

Jack Stell, Fall, 1978
Alabama Historical Commission

Lyon-Tierce House (50), view from
the northwest. Also shows
McClelland Block (49) and
structures on south side of
Washington which were omitted
from district.

Photo number: 21

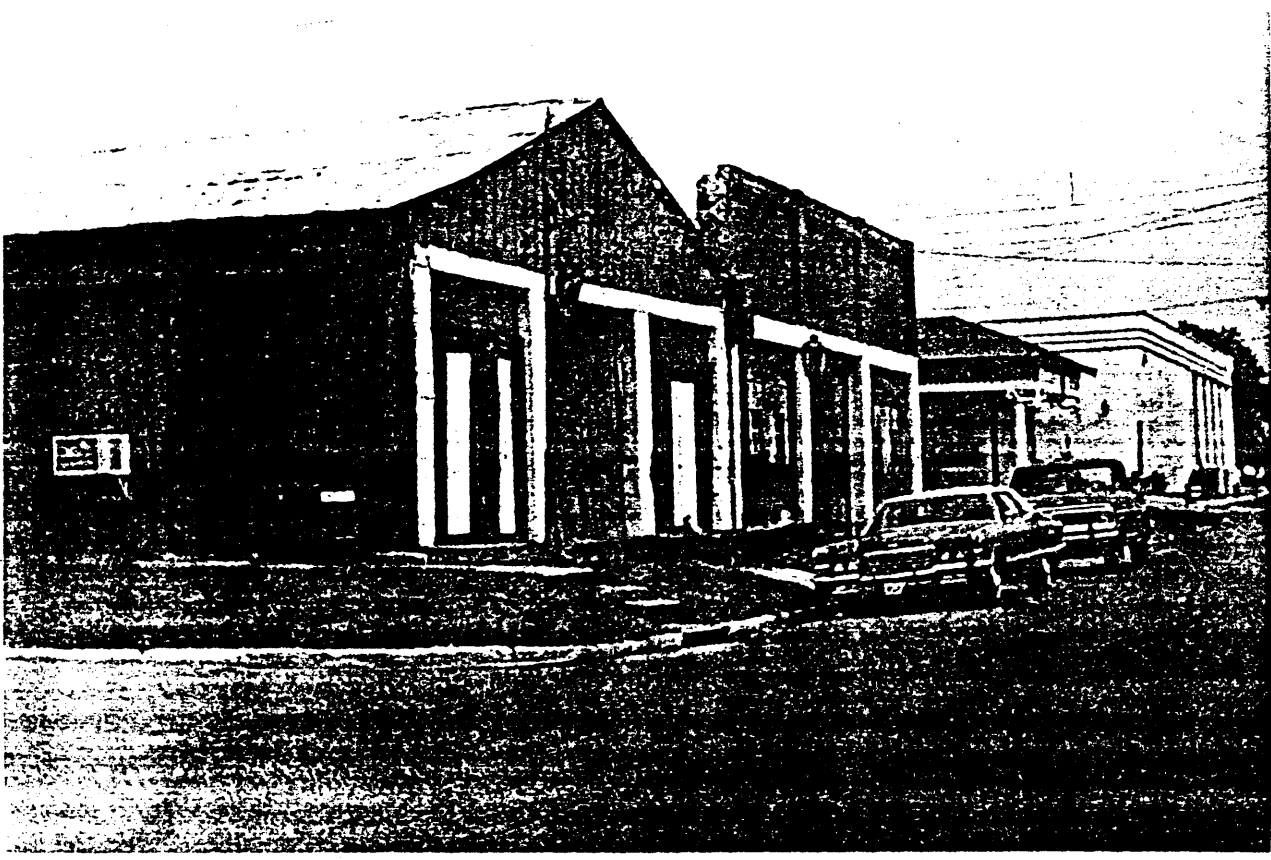
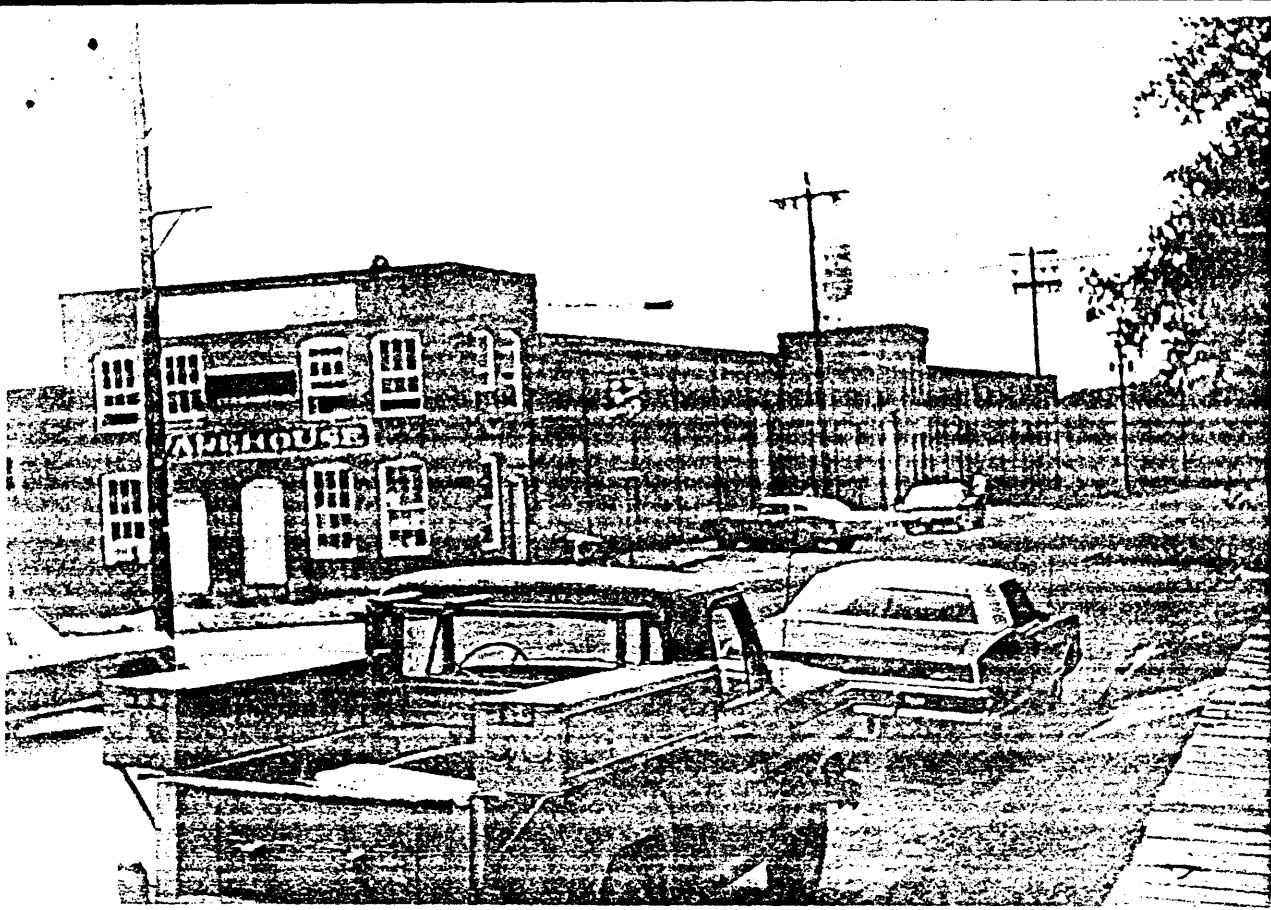
22

Demopolis Historic Business
District
Demopolis, Alabama, Marengo Co.

Jack Stell, Fall, 1978
Alabama Historical Commission

Winn-Culpepper Warehouse (51),
view from the northwest.

Photo number: 22



Demopolis Historic Business
District
Demopolis, Alabama, Marengo Co.

Jack Stell, Fall, 1978
Alabama Historical Commission

Winn-Culpepper Warehouse (51),
view from the northeast.

Photo number: 23

Demopolis Historic Business
District
Demopolis, Alabama, Marengo Co.

Jack Stell, Fall, 1978
Alabama Historical Commission

McKinley Carriage and Blacksmith
Shop (52) and Bird Shop (53),
view from the southwest. Also
shows south elevation of bank
building which was omitted from
district.

Photo number: 24

UNITED STATES DEPARTMENT OF THE INTERIOR
HERITAGE CONSERVATION AND RECREATION SERVICE

FOR HCRS USE ONLY
RECEIVED
DATE ENTERED

**NATIONAL REGISTER OF HISTORIC PLACES
INVENTORY -- NOMINATION FORM**

CONTINUATION SHEET

ITEM NUMBER

PAGE

DEMOPOLIS HISTORIC BUSINESS DISTRICT, Demopolis, Marengo County, Alabama.

Addendum: corrections requested by Office of Archaeology and Historic Preservation.

At the request of the National Register staff the district boundaries have been amended to:

1. Include the previously registered Confederate Park (NRHP 10/29/75).
2. Connect the previously non-contiguous section by including two non-contributing structures (57 and 58, see inventory item 7, page 7) and a vacant lot.
3. Include one property on the east side of Strawberry Street (54, see inventory, item 7, page 7).

The maps, verbal boundary, inventory, text, and list of property owners have been corrected to reflect these changes.

The owners of property added to the district are:

Wayne Williamson
1904 Marengo Drive
Demopolis, Alabama 36732
(owns #56)

Howard Parr
Chevron Oil Station
Highway 80
Demopolis, Alabama 36732
(owns #57)

Mrs. Leslie Crockette
209 South Walnut Street
Demopolis, Alabama 36732
(owns #54)

Mrs. W. C. Glover
Southmont Drive
Demopolis, Alabama 36732
(owns land on Washington)