



1. "MERRITT PARKWAY, GREENWICH. THIS VIEW IS KNOWN LOCALLY AS "RIPPLES CUT"  
AND SHOWS FINISHED ROADWAY SUBGRADE. ROADSIDES ARE NEWLY SEEDED.  
DATE 1936. SEE VIEW TAKEN 3 YEARS LATER."

2. TOWN SITE: GREENWICH, CONN., Fairfield County

3. PHOTOGRAPH BY GEO. E. MEYERS. FROM COLLECTION OF A. E. WOOD.

4. DATE: 1936

5. NEGATIVE ON FILE WITH CONN. HISTORICAL COMMISSION, 59 S. PROSPECT  
ST. HARTFORD, CONN. 06106.

6. VIEW FROM WEST

7. PHOTOGRAPH 1



1. "MERRITT PARKWAY - GREENWICH - RIPPLES CUT" - TAKEN IN 1939"
2. GREENWICH, CONN., Fairfield County
3. GLO. E. MEYERS, FROM COLLECTION OF A. E. WOOD
4. DATE: 1939
5. NEGATIVE FILED WITH CONN. HISTORICAL COMMISSION,  
54 SO. PROSPECT ST., HARTFORD, CONN. 06106
6. VIEW FROM WEST.
7. PHOTOGRAPH 2

COMMERCIAL VEHICLES  
TAXICABS TRAILERS  
PEDESTRIANS PROHIBITED  
ON MERRITT PARKWAY  
MERRITT PARKWAY PROHIBITED  
NO PICKING  
ALLOWED ON PARKWAY

YOU ARE ENTERING  
**CONNECTICUT**  
ON THE  
MERRITT PARKWAY

KING ST  
ROUTE 120 A

30



1. MERRITT PARKWAY AT N.Y. STATE LINE
2. GREENWICH, CONN., Fairfield County
3. PHOTOGRAPH BY CONN. DEPT. OF TRANSPORTATION,  
COURTESY OF STAMFORD ADVOCATE
4. DATE: CA. 1940
5. NEGATIVE FILED WITH CONN. HISTORICAL COMMISSION,  
59 S. PROSPECT ST., HARTFORD, CONN. 06106
6. VIEW FROM WEST
7. PHOTOGRAPH 3

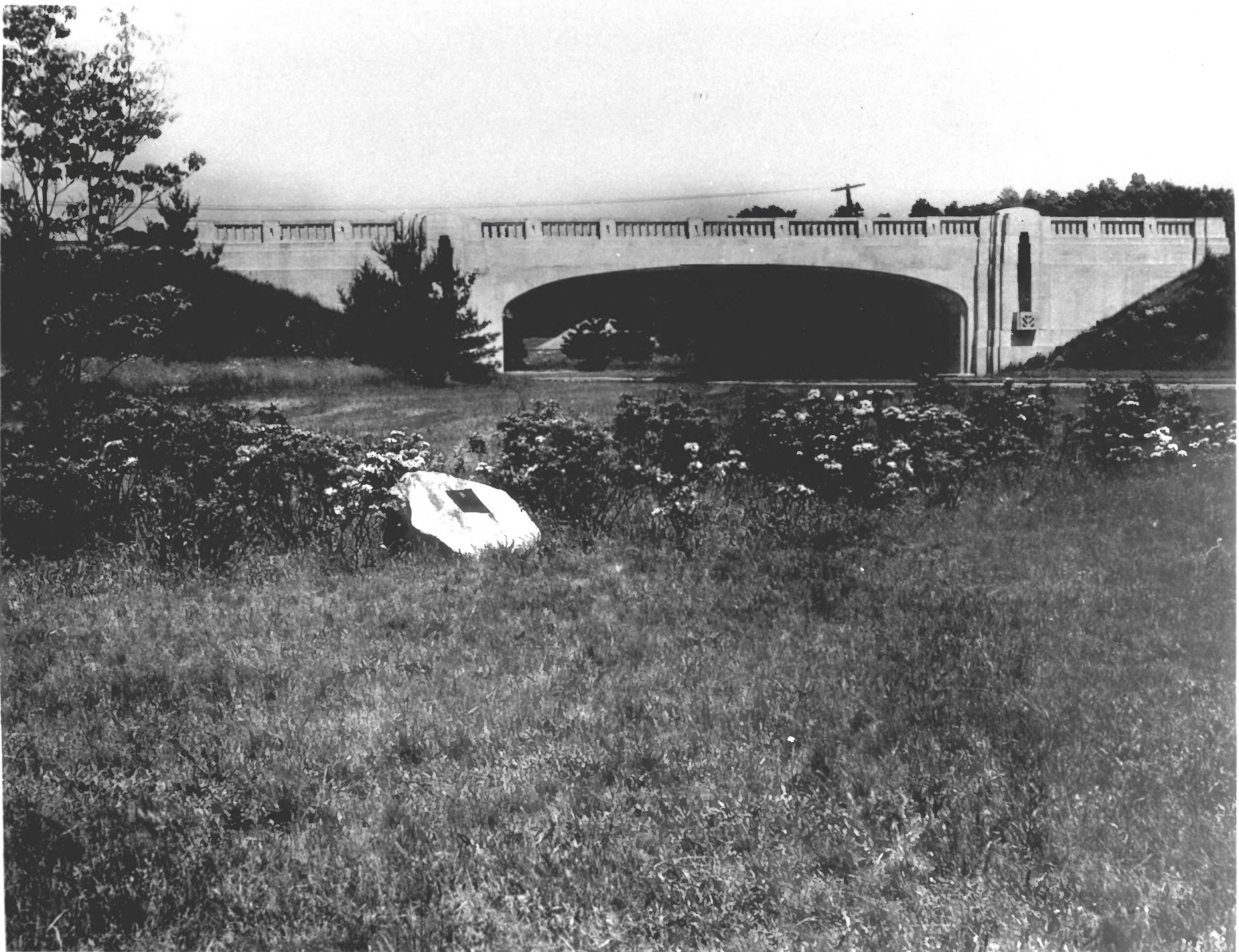


1. LABELLED: " MERRITT PARKWAY - TOWN OF GREENWICH. ONE HALF MILE EAST OF N.Y. STATE LINE "
2. GREENWICH, CONN., Fairfield County
3. PHOTOGRAPH BY GEO. E. MEYERS, FROM COLLECTION OF A. E. WOOD.
4. DATE: 1939
5. NEGATIVE ON FILE WITH CONN. HISTORICAL COMMISSION,  
59 SO. PROSPECT ST., HARTFORD, CONN. 06106
6. VIEW FROM EAST
7. PHOTOGRAPH 4





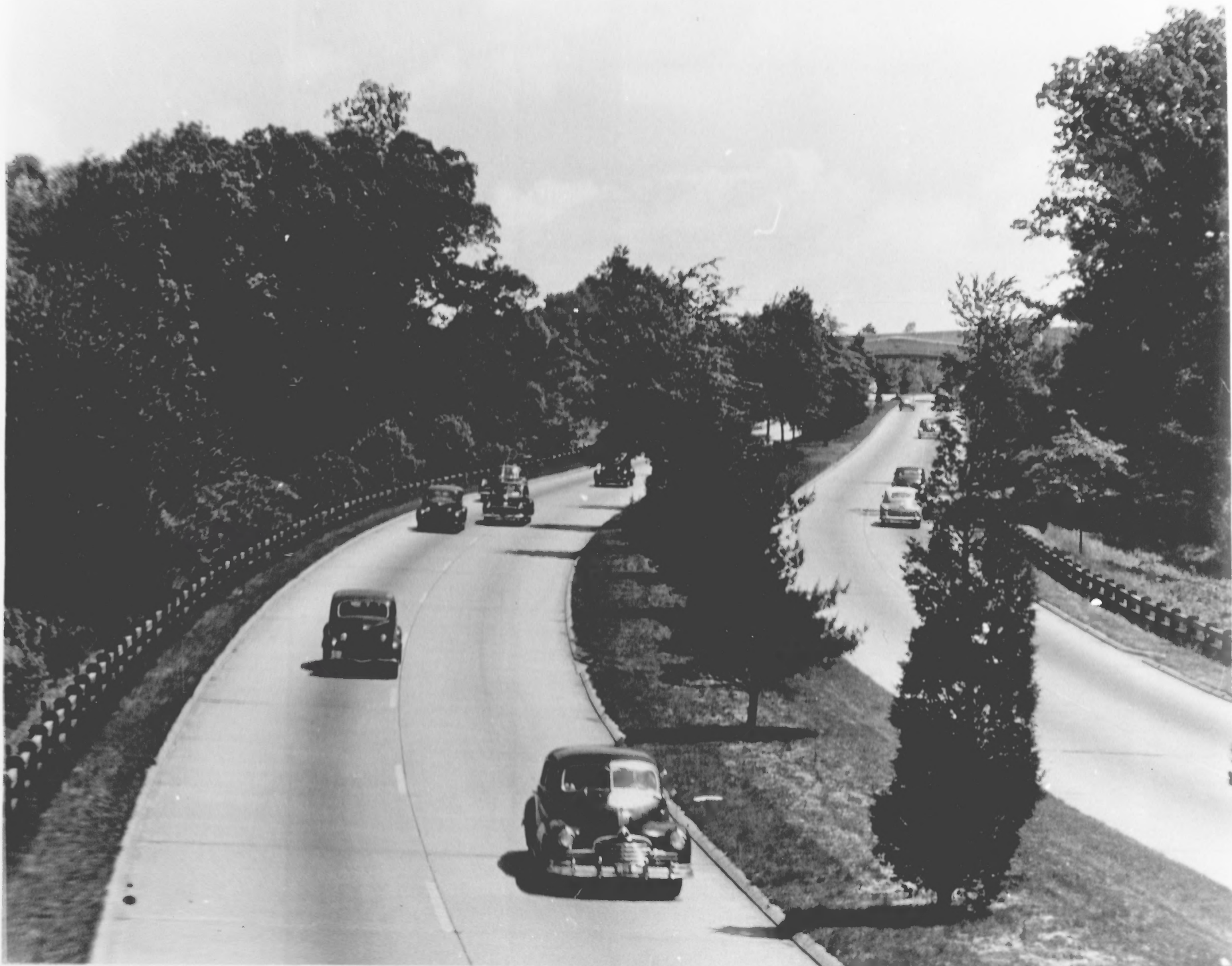
1. LABELLED: "MERRITT PARKWAY - TOWN OF GREENWICH,  
LOOKING WEST TO RIVERSVILLE ROAD GRADE  
SEPARATION. PHOTO TAKEN 1939. FOR COMPARISON -  
SEE SAME VIEW IN 1936."
2. GREENWICH, CONN., Fairfield County
3. PHOTOGRAPH BY GEO. E. MEYERS, FROM  
COLLECTION OF A. EARL WOOD.
4. DATE: 1939
5. NEGATIVE FILED WITH CONN HISTORICAL COMMISSION,  
59 S. PROSPECT ST., HARTFORD, CONN 06106
6. VIEW FROM EAST
7. PHOTOGRAPH 5



1. LAUREL BUSHES WITH BOULDER COMMEMORATING DONATION OF PLANTINGS BY EASTON GARDEN CLUB. SPORT HILL RD BRIDGE IN BACKGROUND
2. WESTPORT, CONN., Fairfield County
3. PHOTOGRAPH FROM STATE ARCHIVES, CONN STATE LIBRARY, PG 170, BOX 1
4. DATE: CA. 1940
5. NEGATIVE ON FILE WITH CONN. HISTORICAL COMMISSION, 59 SO. PROSPECT ST., HARTFORD, CONN. 06106
6. VIEW FROM NORTHWEST
7. PHOTOGRAPH 6



1. LANDSCAPING NEAR SPORT HILL RD, BRIDGE, WITH BOULDER  
COMMEMORATING DONATION OF PLANTINGS BY EASTON  
GARDEN CLUB. APPROXIMATELY SAME VIEW AS #6,
2. WESTPORT, CONN., Fairfield County
3. PHOTOGRAPH BY C. WIGREN
4. DATE = 1990
5. NEGATIVE ON FILE WITH CONN. HISTORICAL COMMISSION,  
59 SO. PROSPECT ST., HARTFORD, CONN. 06106
6. VIEW FROM NORTHWEST
7. PHOTOGRAPH 7



1. MERRITT PARKWAY, LOCKING TOWARD PARK AVE BRIDGE.
2. TRUMBULL, CONN., Fairfield County
3. PHOTOGRAPH FROM STATE ARCHIVE, CONN. STATE LIBRARY  
PG 170, BOX 1
4. DATE, CA. 1940
5. NEGATIVE ON FILE WITH CONN. HISTORICAL COMMISSION,  
59 SO. PROSPECT ST., HARTFORD, CONN. 06106
6. VIEW FROM SOUTHEAST
7. PHOTOGRAPH 8





1. MERRITT PARKWAY, FROM PLATTSVILLE RD. BRIDGE.

APPROXIMATELY SAME VIEW AS #8.

2. TRUMBULL, CONNECTICUT, Fairfield County

3. PHOTOGRAPH BY C. WIGREN

4. DATE: 1990

5. NEGATIVE FILED WITH CONN. HISTORICAL COMMISSION,  
59 SO. PROSPECT ST., HARTFORD, CONN. 06106

6. VIEW FROM SOUTHEAST

7. PHOTOGRAPH 9



1. LABELLED: "MERRITT PARKWAY, NEW CANAAN.

LOOKING WEST TOWARD RAILROAD BRIDGE  
AT STAMFORD AVENUE."

2. NEW CANAAN, CONN., Fairfield County

3. PHOTOGRAPH COURTESY OF A. EARL WOOD

4. DATE: CA. 1940

5. NEGATIVE FILED WITH CONN. HISTORICAL COMMISSION,

59 S. PROSPECT ST., HARTFORD, CONN. 06106

6. VIEW FROM EAST

7. PHOTOGRAPH 10



1. AERIAL VIEW LABELLED: "TOWN OF NORWALK,  
SHOWING ACCESS DRIVES TO U.S. ROUTE #7.  
NORWALK TIRE & RUBBER CO."
2. NORWALK, CONN., Fairfield County
3. PHOTOGRAPH BY EPSTEIN (?); COURTESY OF  
A. E. WOOD
4. CA. 1940
5. NEGATIVE FILED WITH CONN. HISTORICAL COMMISSION,  
59 S. PROSPECT, HARTFORD, CONN. 06106
6. VIEW FROM EAST
7. PHOTOGRAPH II



1. MERRITT PARKWAY, GENERAL VIEW SHOWING MATURED VEGETATION, GUARDRAILS, AND MODERN ROAD SURFACE.
2. STAMFORD, CONN., Fairfield County
3. PHOTOGRAPH BY M.W. NEUSTADTER
4. DATE: 1990
5. NEGATIVE ON FILE WITH CONN. HISTORICAL COMMISSION,  
59 SO. PROSPECT ST., HARTFORD, CONN. 06106
6. VIEW FROM EAST
7. PHOTOGRAPH 12





1. MCKRITT PARKWAY, GENERAL VIEW SHOWING MATURED VEGETATION AND MODERN DRAIN.
2. NORWALK, CONN., Fairfield County
3. PHOTOGRAPH BY M.W. NEUSTADTER
4. DATE = 1990
5. NEGATIVE FILED WITH CONN HISTORICAL COMMISSION,  
51 SO PROSPECT ST., HARTFORD, CONN 06106
6. VIEW FROM EAST.
7. PHOTOGRAPH 13



1. PUTNAM LAKE, NEAR NORTH ST. BRIDGE.
2. GREENWICH, CONN., Fairfield County
3. PHOTOGRAPH BY M. W. NEUSTADTER
4. DATE: 1990
5. NEGATIVE ON FILE WITH CONN. HISTORICAL COMMISSION,  
59 SO. PROSPECT ST, HARTFORD, CONN.
6. VIEW FROM NORTH
7. PHOTOGRAPH 14



1. LAKE AVE. BRIDGE, GENERAL VIEW
2. GREENWICH, CONN., Fairfield County
3. PHOTOGRAPH BY M.W. NEUSTADTER
4. DATE: 1990
5. NEGATIVE ON FILE WITH CONN. HISTORICAL COMMISSION,  
59 SO. PROSPECT ST., HARTFORD, CONN. 06106
6. VIEW FROM SOUTHEAST
7. PHOTOGRAPH 15



1. LAKE AVE. BRIDGE, DETAIL
2. GREENWICH, CONNECTICUT, Fair field County
3. PHOTOGRAPH BY M. W. NEUSTADTER
4. DATE=1990
5. NEGATIVE FILED WITH CONN. HISTORICAL COMMISSION,  
59 SO. PROSPECT ST., HARTFORD, CONN. 06106
6. VIEW FROM: N/A
7. PHOTOGRAPH 16





STANWICH RD

WINDY  
BAY

Merritt + Parkway, Fairfield Center CT

1. STANWICH RD. BRIDGE
2. GREENWICH, CONN., Fairfield County
3. PHOTOGRAPH BY C. WIGREN
4. DATE: 1990
5. NEGATIVE ON FILE WITH CONN. HISTORICAL COMMISSION,  
59 SO. PROSPECT ST., HARTFORD, CONN. 06106
6. VIEW FROM WEST
7. PHOTOGRAPH 17



1. STANWICH RD. BRIDGE, DETAIL
2. GREENWICH, CONN., Fairfield County
3. PHOTOGRAPH BY C. WIGREN
4. DATE: 1990
5. NEGATIVE ON FILE WITH CONN. HISTORICAL COMMISSION,  
59 SO. PROSPECT ST., HARTFORD, CONN. 06106.
6. VIEW FROM WEST
- 7 PHOTOGRAPH 18



1. GUINEA RD. BRIDGE, GENERAL VIEW
2. GREENWICH, CONN., Fairfield County
3. PHOTOGRAPH BY M.W. NEUSTADTER
4. DATE: 1990
5. NEGATIVE ON FILE WITH CONN. HISTORICAL COMMISSION,  
59. SO. PROSPECT ST., HARTFORD, CONN. 06106
6. VIEW FROM EAST
7. PHOTOGRAPH 19



1. GUINEA RD. BRIDGE, DETAIL
2. GREENWICH, CONN., Fairfield County
3. PHOTOGRAPH BY M.W. NEUSTADTER
4. DATE: 1990
5. NEGATIVE ON FILE WITH CONN. HISTORICAL COMMISSION,  
59 SO. PROSPECT ST., HARTFORD, CONN. 06106
6. VIEW FROM EAST
7. PHOTOGRAPH 20





RIVERBANK RD.

1. RIVERBANK RD. BRIDGE, GENERAL VIEW
2. STAMFORD, CONN., Fairfield County
3. PHOTOGRAPH BY M. W. NEUSTADTER
4. DATE: 1990
5. NEGATIVE ON FILE WITH CONN. HISTORICAL COMMISSION,  
59 SO PROSPECT ST., HARTFORD, CONN. 06106
6. VIEW FROM WEST
7. PHOTOGRAPH 21



1. RIVERBANK RD. BRIDGE, DETAIL
2. STAMFORD, CONN., Fairfield County
3. PHOTOGRAPH BY M.W. NEUSTADTER
4. DATE: 1990
5. NEGATIVE ON FILE WITH CONN. HISTORICAL COMMISSION,  
59 SO. PROSPECT ST., HARTFORD, CONN. 06106
6. VIEW FROM WEST
7. PHOTOGRAPH 22



1. COMSTOCK HILL RD. BRIDGE, GENERAL VIEW
2. NORWALK, CONN., Fairfield County
3. PHOTOGRAPH BY C. WIGREN
4. DATE: 1990
5. NEGATIVE ON FILE WITH CONN. HISTORICAL COMMISSION,  
59 SO. PROSPECT ST., HARTFORD, CONN. 06106
6. VIEW FROM WEST
7. PHOTOGRAPH 23



1. COMSTOCK HILL RD. BRIDGE, DETAIL OF ABUTMENT
2. NORWALK, CONN., Fairfield County
3. PHOTOGRAPH BY C. WIGREN
4. DATE: 1990
5. NEGATIVE FILED WITH CONN. HISTORICAL COMMISSION,  
59 S. PROSPECT ST., HARTFORD, CONN. 06106
6. VIEW FROM WEST
7. PHOTOGRAPH 24





1. NEWTOWN TPKE. BRIDGE
2. WESTPORT, CONN., Fairfield County
3. PHOTOGRAPH BY M. W. NEUSTADTER
4. DATE: 1990
5. NEGATIVE ON FILE WITH CONN. HISTORICAL COMMISSION,  
59 S. PROSPECT ST., HARTFORD, CONN. 06106
6. VIEW FROM EAST
7. PHOTOGRAPH 25



1. NORTH AVE. BRIDGE, GENERAL VIEW
2. WESTPORT, CONN., Fairfield County
3. PHOTOGRAPH BY C. WIGREN
4. DATE: 1990
5. NEGATIVE FILED WITH CONN. HISTORICAL COMMISSION,  
59 S. PROSPECT ST., HARTFORD, CONN. 06106
6. VIEW FROM WEST
7. PHOTOGRAPH 26

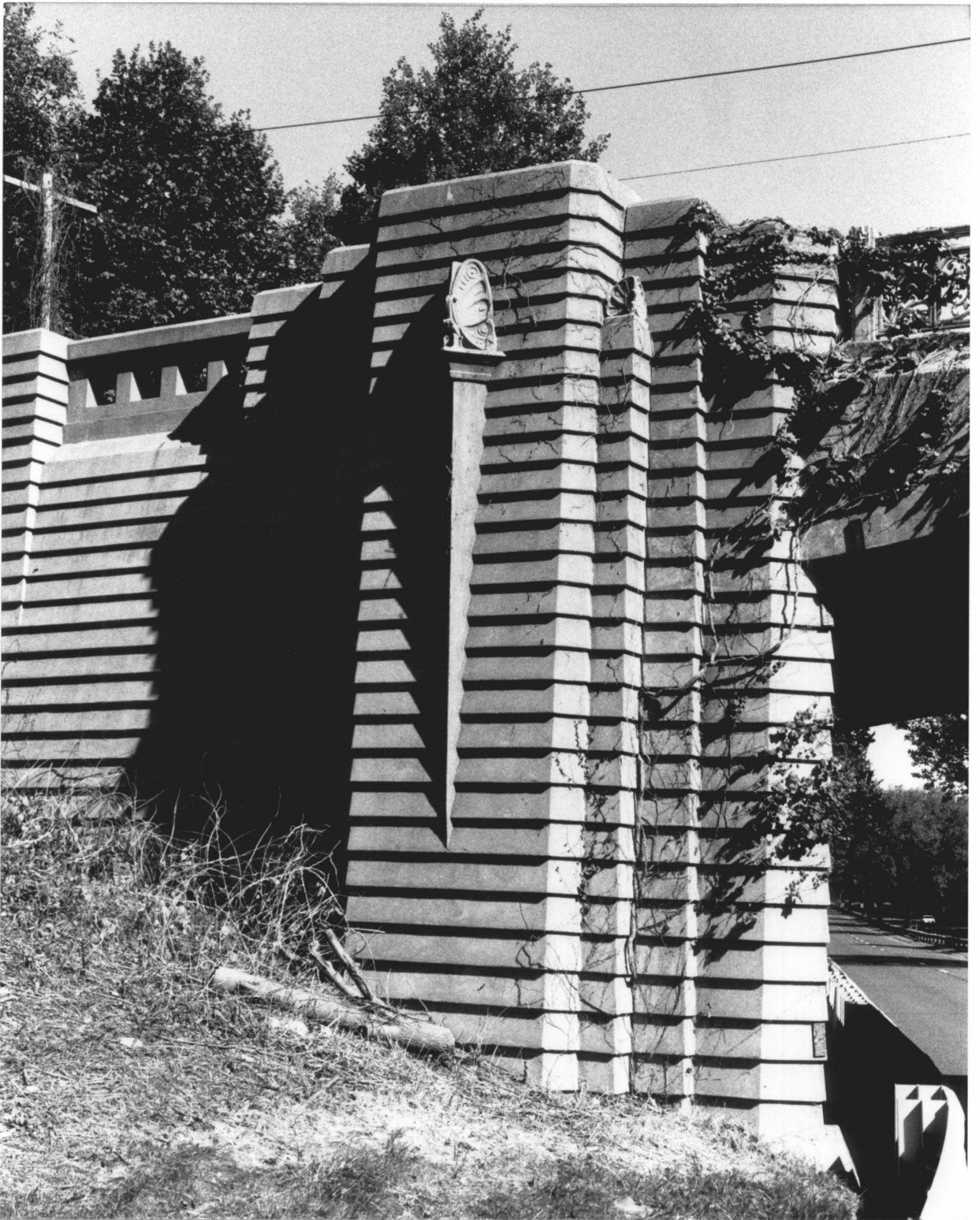


1. NORTH AVE. BRIDGE, DETAIL OF PARAPET
2. WESTPORT, CONN., Fairfield County
3. PHOTOGRAPH BY C. WIGREN
4. DATE 1990
5. NEGATIVE FILED WITH CONN. HISTORICAL COMMISSION,  
59 S. PROSPECT ST., HARTFORD, CONN. 06106
6. VIEW FROM NORTHWEST
7. PHOTOGRAPH 27



1. MERWINS LANE BRIDGE, GENERAL VIEW
2. FAIRFIELD, CONN., Fairfield County
3. PHOTOGRAPH BY C. WIGREN
4. DATE: 1990
5. NEGATIVE FILED WITH CONN. HISTORICAL COMMISSION,  
59 S. PROSPECT ST., HARTFORD, CONN. 06106
6. VIEW FROM NORTHWEST
7. PHOTOGRAPH 28





1. MERWINS LANE BRIDGE, DETAIL OF ABUTMENT
2. FAIRFIELD, CONN., Fairfield County
3. PHOTOGRAPH BY C. WIGREN
4. DATE: 1990
5. NEGATIVE FILED WITH CONN. HISTORICAL COMMISSION  
59 S. PROSPECT ST. HARTFORD, CONN 06106
6. VIEW FROM WEST
7. PHOTOGRAPH 29



1. MERWINS LANE ; DETAIL OF RAILING
2. FAIRFIELD, CONN. , Fairfield County
3. PHOTOGRAPH BY C. WIGREN
4. DATE: 1990
5. NEGATIVE FILED WITH CONN. HISTORICAL COMMISSION,  
59 S. PROSPECT ST., HARTFORD, CONN. 06106
6. VIEW FROM WEST
7. PHOTOGRAPH 30



1. BURR ST. BRIDGE, GENERAL VIEW
2. WESTPORT, CONN., Fairfield County
3. PHOTOGRAPH BY C. WIGREN
4. DATE: 1990
5. NEGATIVE FILED WITH CONN. HISTORICAL COMMISSION,  
59 S. PROSPECT ST., HARTFORD, CONN. 06106
6. VIEW FROM WEST
7. PHOTOGRAPH 31

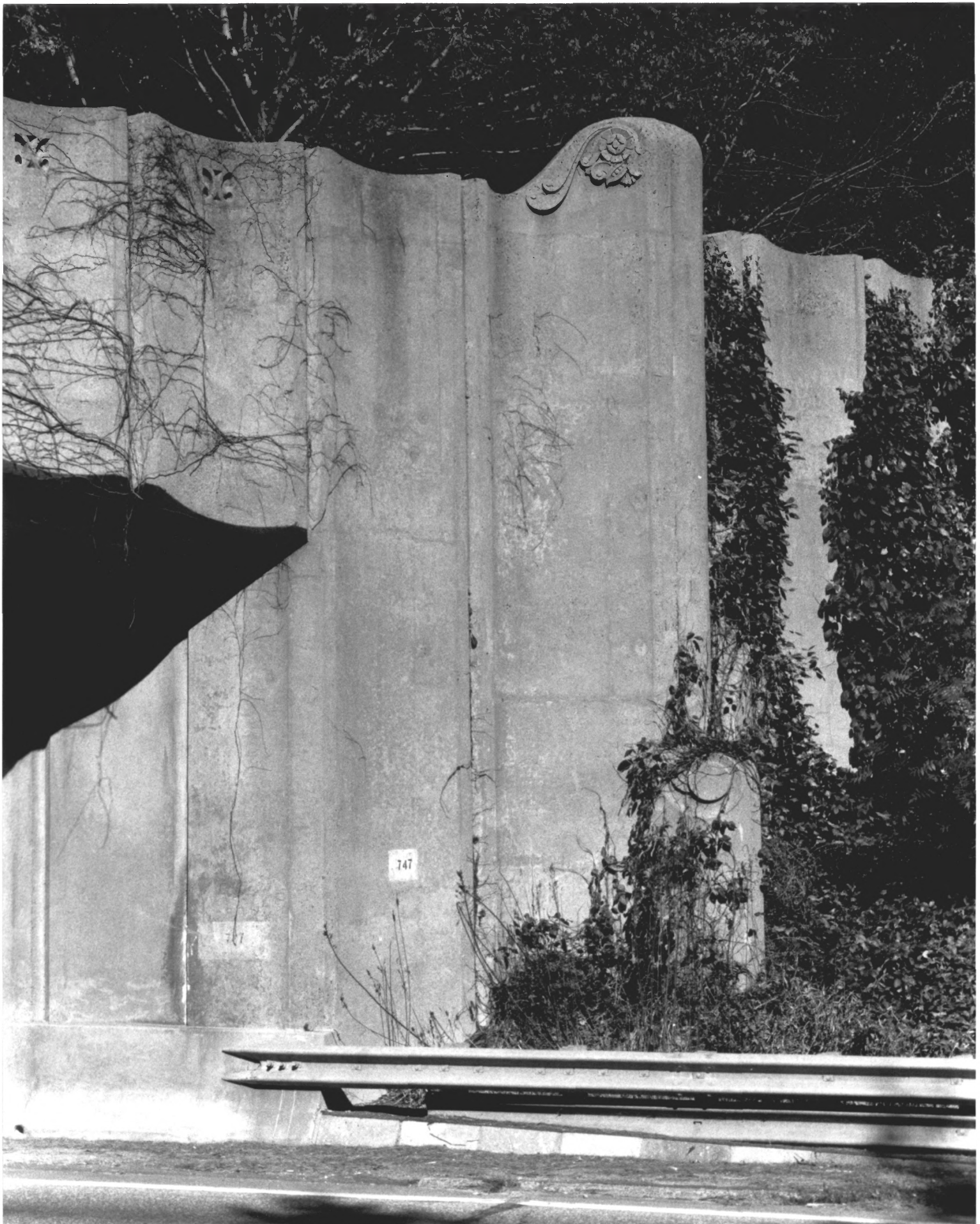


1. BURR ST. BRIDGE, DETAIL OF ABUTMENT
2. WESTPORT, CONN., Fairfield County
3. PHOTOGRAPH BY. C. WIGREN
4. DATE: 1990
5. NEGATIVE FILED WITH CONN. HISTORICAL COMMISSION,  
59 S. PROSPECT ST., HARTFORD, CONN. 06106
6. VIEW FROM WEST
7. PHOTOGRAPH 32





1. MADISON AVE. BRIDGE, GENERAL VIEW
2. TRUMBULL, CONN., Fairfield County
3. PHOTOGRAPH BY C. WIGREN
4. DATE: 1990
5. NEGATIVE FILED WITH CONN. HISTORICAL COMMISSION,  
59 S. PROSPECT ST., HARTFORD, CONN 06106
6. VIEW FROM SOUTHEAST
7. PHOTOGRAPH 33



1. MADISON AVE. BRIDGE, ABUTMENT
2. TRUMBULL, CONN., Fairfield County
3. PHOTOGRAPH BY C. WIGREN
4. DATE: 1990
5. NEGATIVE FILED WITH CONN. HISTORICAL COMMISSION  
59 S. PROSPECT ST., HARTFORD, CONN. 06106
6. VIEW FROM SOUTHEAST
7. PHOTOGRAPH 34



13-4

LEFT  
LANE

RIGHT  
LANE

JAMES FARM RD

1. JAMES FARM RD. BRIDGE, GENERAL VIEW
2. STRATFORD, CONN., Fairfield County
3. PHOTOGRAPH BY C. WIGREN
4. DATE: 1940
5. NEGATIVE FILED WITH CONN. HISTORICAL COMMISSION,  
59 S. PROSPECT ST., HARTFORD, CONN. 06106
6. VIEW FROM EAST
7. PHOTOGRAPH 35



1. JAMES FARM RIVER RD. BRIDGE, DETAIL
2. STRATFORD, CONN., Fairfield County
3. DATE: 1990
4. PHOTOGRAPH BY C. WIGREN
5. NEGATIVE FILED WITH CONN. HISTORICAL COMMISSION,  
59 S. PROSPECT ST., HARTFORD, CONN. 06106
6. VIEW FROM SOUTH
7. PHOTOGRAPH 36

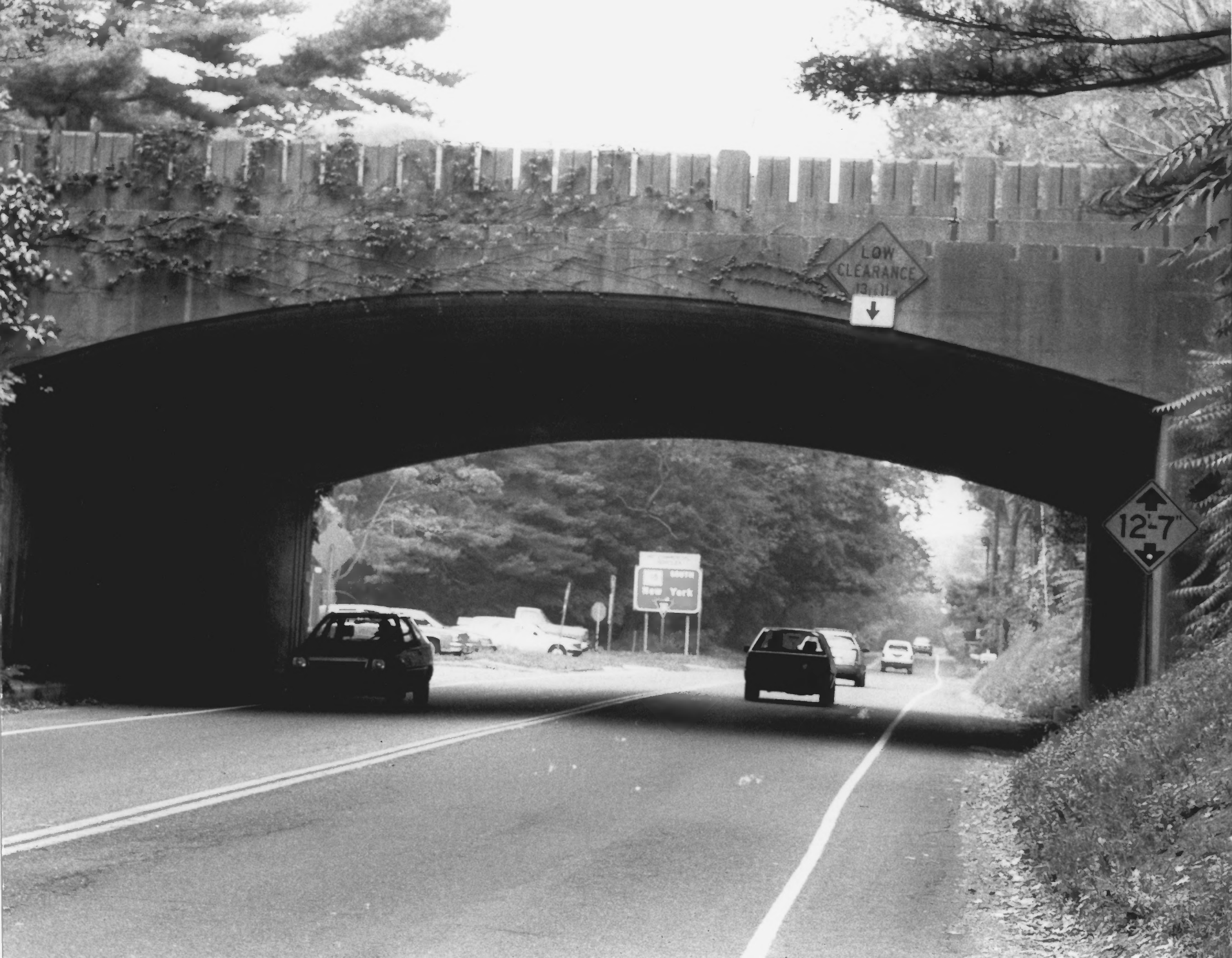




1. METRO NORTH RR BRIDGE
2. NORWALK, CONN., Fairfield County
3. PHOTOGRAPH BY C. WIGREN
4. DATE: 1990
5. NEGATIVE FILED WITH CONN. HISTORICAL COMMISSION,  
59 S. PROSPECT ST., HARTFORD, CONN. 06106
6. VIEW FROM NORTH
7. PHOTOGRAPH 37



1. NORWALK RIVER BRIDGE
2. NORWALK, CONN., Fairfield County
3. PHOTOGRAPH BY C. WIGREN
4. DATE: 1990
5. NEGATIVE FILED WITH CONN. HISTORICAL COMMISSION,  
59 S. PROSPECT ST., HARTFORD, CONN. 06106
6. VIEW FROM NORTH
7. PHOTOGRAPH 38



LOW  
CLEARANCE  
13'-11"  
↓

↑  
12'-7"  
↓

SOUTH  
New York

1. ROUTE 57 BRIDGE
2. WESTPORT, CONN., Fairfield County
3. PHOTOGRAPH BY M.W. NEUSTADTER
4. DATE: 1990
5. NEGATIVE FILED WITH CONN. HISTORICAL COMMISSION,  
59 S. PROSPECT, HARTFORD, CONN. 06106
6. VIEW FROM SOUTH
7. PHOTOGRAPH 39



1. CROSS HIGHWAY BRIDGE
2. FAIRFIELD, CONN., Fairfield County
3. PHOTOGRAPH BY C. WIGREN
4. DATE: 1990
5. NEGATIVE FILED WITH CONN. HISTORICAL COMMISSION  
59 S. PROSPECT ST., HARTFORD, CONN. 06106
6. VIEW FROM SOUTH
7. PHOTOGRAPH 40





1. ROUTE 110 BRIDGE
2. STRATFORD, CONN., Fairfield County
3. PHOTOGRAPH BY C. WIGREN
4. DATE: 1990
5. NEGATIVE FILED WITH CONN. HISTORICAL COMMISSION,  
59 S. PROSPECT ST., HARTFORD, CONN. 06106
6. VIEW FROM SOUTH
7. PHOTOGRAPH 41



1. HUNTINGTON TPKE BRIDGE, WITH CAST IRON ORNAMENTAL PANELS REUSED FROM NICHOLS AVE. BRIDGE, DEMOLISHED 1979
2. TRUMBULL, CONN., Fairfield County
3. PHOTOGRAPH BY C. WIGREN
4. DATE: 1990
5. NEGATIVE FILED WITH CONN. HISTORICAL COMMISSION,  
59 S. PROSPECT ST., HARTFORD, CONN. 06106
6. VIEW FROM EAST
7. PHOTOGRAPH 42



1. ROUTE 8 INTERCHANGE
2. TRUMBULL, CONN., Fairfield County
3. PHOTOGRAPH BY C. WIGREN
4. DATE: 1990
5. NEGATIVE FILED WITH CONN. HISTORICAL COMMISSION,  
59 S. PROSPECT ST., HARTFORD, CONN. 06106
6. VIEW FROM WEST
7. PHOTOGRAPH 43



1. MAINTENANCE GARAGE AT NEW CANAAN  
REST AREA
2. NEW CANAAN, CONN., Fairfield County
3. PHOTOGRAPH BY C. WIGREN
4. DATE: 1990
5. NEGATIVE FILED WITH CONN. HISTORICAL COMMISSION,  
59 S. PROSPECT ST., HARTFORD, CONN. 06106
6. VIEW FROM SOUTH.
7. PHOTOGRAPH 44



Regular Unk.  
Self Serve-Cash  
**1.45<sup>9</sup>**  
Full Serve-Cash  
**1.49<sup>9</sup>**

Self Full



1. GREENWICH REST AREA, SERVICE STATION
2. GREENWICH, CONN., Fairfield County
3. PHOTOGRAPH BY M. W. NEUSTADTER
4. DATE: 1990
5. NEGATIVE FILED WITH CONN. HISTORICAL COMMISSION,  
59 S. PROSPECT ST., HARTFORD, CONN. 06106
6. VIEW FROM NORTHWEST
7. PHOTOGRAPH 45



1. TOLLBOOTH AND POND
2. GREENWICH, CONN., Fairfield County
3. PHOTOGRAPH FROM STATE ARCHIVES, CONN.  
STATE LIBRARY, PG 170, BOX 1
4. DATE: CA. 1939
5. NEGATIVE FILED WITH CONN. HISTORICAL COMMISSION,  
59 S. PROSPECT ST., HARTFORD, CONN. 06106
6. VIEW FROM NORTH
7. PHOTOGRAPH 46