

EASTERN CANAL

CARROLLE CANAL

LINNIE CANAL

HOWLAND CANAL

SHERMAN CANAL

CANAL

CANAL

CANAL

CANAL

GRAND CANAL

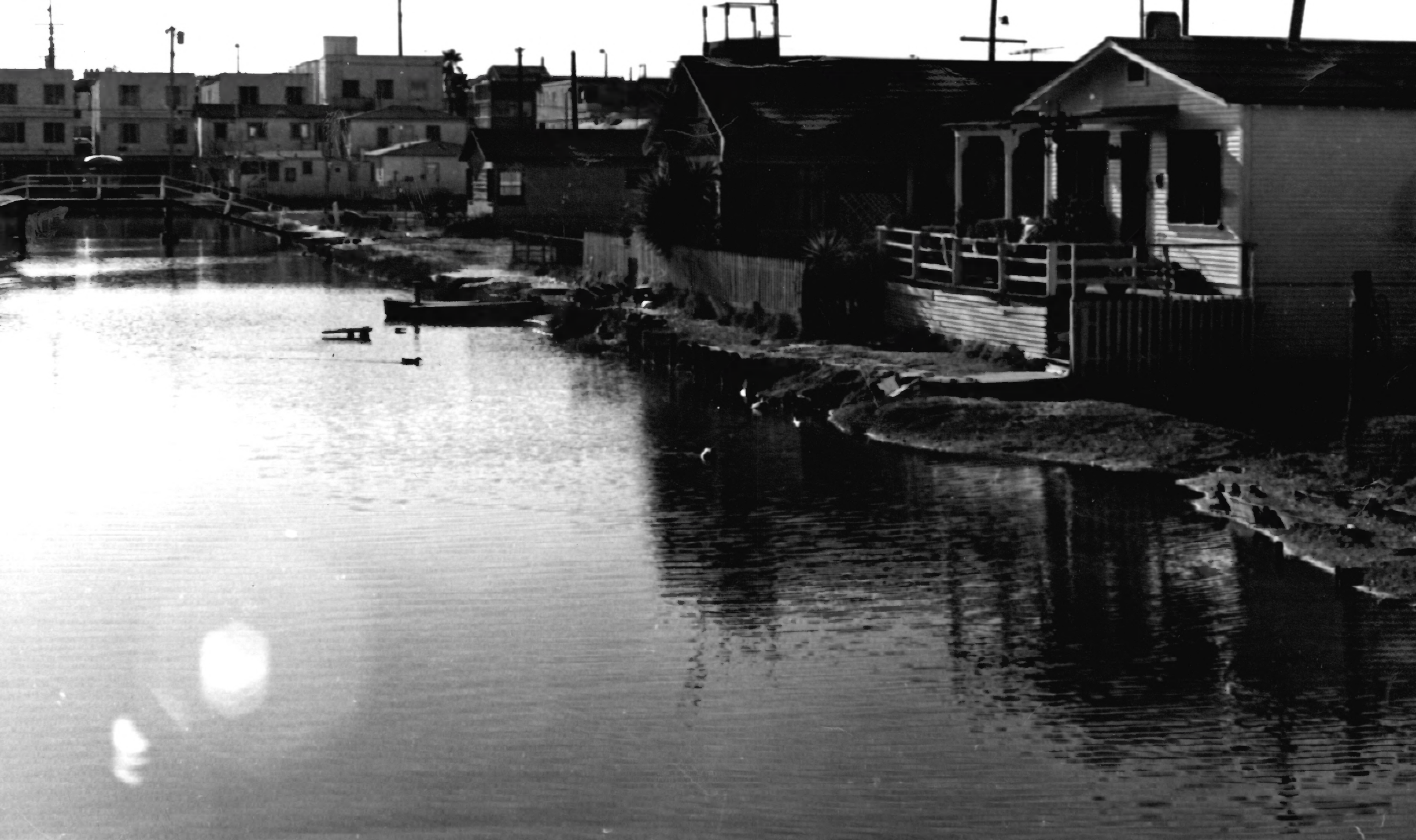
1. VENICE CANAL DISTRICT (RIGHT OF WAY)
2. LOS ANGELES, CALIFORNIA
3. PHOTOGRAPH BY: LLOYD D. PAULSEN, CITY OF LOS ANGELES,
DEPARTMENT OF PUBLIC WORKS, BUREAU OF ENGINEERING,
COORDINATING DIVISION
4. APPROX. JUNE, 1978
5. NEGATIVE FILED AT ROOM 810, CITY HALL, LOS ANGELES, CA 90012
6. VIEW OF THE VENICE CANAL DISTRICT AND SURROUNDING AREA-
LOOKING TOWARD THE NORTHEAST - PHOTOGRAPH TAKEN FROM
HELICOPTER
7. PHOTOGRAPH NO. 1 *of 12*

JUN 21 1979



1. VENICE CANAL DISTRICT (RIGHT OF WAY)
2. LOS ANGELES, CALIFORNIA
3. PHOTOGRAPH BY: JACK GROCE, CITY OF LOS ANGELES, DEPARTMENT OF PUBLIC WORKS, BUREAU OF ENGINEERING, WEST LOS ANGELES DISTRICT
4. APPROX. SEPTEMBER, 1978
5. NEGATIVE FILED AT ROOM 209, WEST LOS ANGELES MUNICIPAL BUILDING, LOS ANGELES, CA 90025
6. VIEW OF SHERMAN CANAL LOOKING WEST FROM SOUTH SIDE OF GRAND CANAL AT EASTERN CANAL
7. PHOTOGRAPH NO. 2 *of 12*

JUN 21 1979



1. VENICE CANAL DISTRICT (RIGHT OF WAY)
2. LOS ANGELES, CALIFORNIA
3. PHOTOGRAPH BY: JACK GROCE, CITY OF LOS ANGELES, DEPARTMENT OF PUBLIC WORKS, BUREAU OF ENGINEERING, WEST LOS ANGELES DISTRICT
4. APPROX. SEPTEMBER, 1978
5. NEGATIVE FILED AT ROOM 209, WEST LOS ANGELES MUNICIPAL BUILDING, LOS ANGELES, CA 90025
6. VIEW OF HOWLAND CANAL LOOKING WEST FROM THE SOUTH SIDE OF HOWLAND CANAL ABOUT 100 FEET WEST OF DELL AVENUE
7. PHOTOGRAPH NO. 3 *of 12*



1. Venice Canal District
2. Los Angeles, Los Angeles County, CA
3. Photograph by Thomas Moran
4. December 1981
5. Negative: Venice USA, Venice, CA
6. Linnie Canal (typical homes)
7. 3 of 12

3



1. Venice Canal District
2. Los Angeles, Los Angeles County, CA
3. Photograph by Thomas Moran
4. December 1981
5. Negative: Venice USA, Venice, CA
6. Carrole Canal (typical homes)
7. 4 of 12



Howland Canal

1. Venice Canal District
2. Los Angeles, Los Angeles County, CA
3. Photograph by Thomas Moran
4. December 1981
5. Negative: Venice USA, Venice, CA
6. Howland Canal (typical homes)
7. 5 of 12



1. Venice Canal District
2. Los Angeles, Los Angeles County, CA
3. Photograph by Thomas Moran
4. December 1981
5. Negative: Venice USA, Venice, CA
6. Sherman Canal (typical homes)
7. 6 of 12



Eastern Canal

1. Venice Canal District
2. Los Angeles, Los Angeles County, CA
3. Photograph by Thomas Moran
4. December 1981
5. Negative: Venice USA, Venice, CA
6. Eastern Canal (typical homes)
7. 7 of 12



1. Venice Canal District
2. Los Angeles, Los Angeles County, CA
3. Photograph by Thomas Moran
4. December 1981
5. Negative: Venice USA, Venice, CA
6. Linnie Canal
7. 8 of 12



Howland Canal

1. Venice Canal District
2. Los Angeles, Los Angeles County, CA
3. Photograph by Thomas Moran
4. December 1981
5. Negative: Venice USA, Venice, CA
6. Howland Canal
7. 9 of 12



1. Venice Canal District
2. Los Angeles, Los Angeles County, CA
3. Photograph By Thomas Moran
4. December 1981
5. Negative: Venice USA, Venice, CA
6. Carrole Canal
7. 10 of 12



1. Venice Canal District
2. Los Angeles, Los Angeles County, CA
3. Photograph by Thomas Moran
4. December 1981
5. Negative: Venice USA, Venice, CA
6. Sherman Canal
7. 11 of 12



1. Venice Canal District
2. Los Angeles, Los Angeles County, CA
3. Photograph by Thomas Moran
4. December 1981
5. Negative: Venice USA, Venice, CA
6. Sherman Canal
7. 12 of 12