



The Oakland Y. W. C. A. Building  
1515 Webster Street, Oakland  
Alameda County, California

Bill Vandouris  
Negative at YWCA  
April, 1983

View from the northwest: Main entrance  
of the building on Webster Street.

Photo #1 of 10



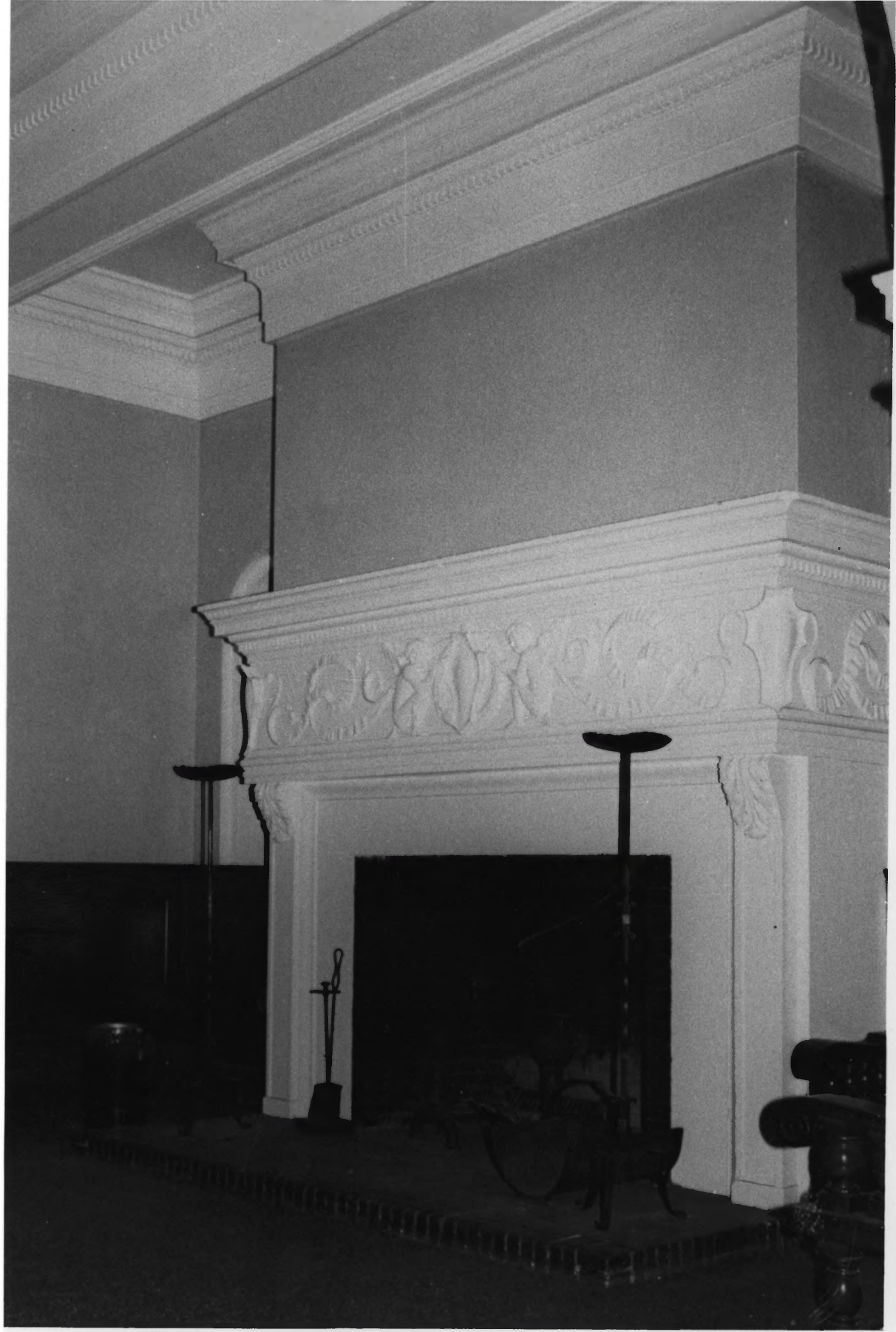
NS DECLARE THE GLORY OF GOD

THE FIRMAMENT SHOWETH HIS HAN

The Oakland Y. W. C. A. Building  
1515 Webster Street, Oakland  
Alameda County, California  
Bill Vandouris,  
Negative at Y. W. C. A.  
April, 1983

View from the west: Central atrium flanked  
with capital columns and archways.

Photo #2 of 10



The Oakland Y.W.C.A. Building  
1515 Webster Street, Oakland  
Alameda County, California  
Bill Vandouris, Y.W.C.A.

April, 1983

View from the north: carved fireplace  
and inglenook on main floor.



The Oakland Y.W.C.A. Building  
1515 Webster Street, Oakland  
Alameda County, California  
Bill Vandouris, Y.W.C.A.

April, 1983

View from the southeast: hardwood staircase  
leading to the second floor .





The Oakland Y.W.C.A. Building  
1515 Webster Street, Oakland  
Alameda County, California  
Bill Vandouris, Y.W.C.A.

April, 1983

View from the north: indoor swimming  
pool and skylight in the Basement



YWCA

天  
T  
RES

ORDS  
ENCY  
nce • Bonds

YWCA  
PROGRAM

NO  
PARKING  
3PM - 6PM

The Oakland Y. W. C. A. Building  
1515 Webster Street, Oakland  
Alameda County, California

Levester Burnley  
Negative at Y. W. C. A.  
July 1984

View from Fifteenth Street (south) side,  
camera looking east.

Photo #6 of 10



YWCA  
PROGRAM

Center for  
Social Change

ONE WAY

NO  
RIGHT  
TURN

CORP  
INS  
B

The Oakland Y. W. C. A. Building  
1515 Webster Street, Oakland  
Alameda County, California

Levester Burnley  
Negative at Y. W. C. A.  
July 1984

View from the southeast corner of building,  
camera looking west on 15th Street

Photo #7 of 10



The Oakland Y. W. C. A. Building  
1515 Webster Street, Oakland  
Alameda County, California

Levester Burnley  
Negative at Y. W. C. A.  
July 1984

View: Streetscape showing main facade and  
southeast corner, camera looking north on  
Webster Street

Photo #8 of 10



17th ST  
350 ▶

NO  
PARKING

3 AM TO 6 AM

HOLIDAYS

3<sup>00</sup>

12 HOURS

NOVEMBER 1982

NOVEMBER 1982

NOVEMBER 1982

NOVEMBER 1982

NOVEMBER 1982

NOVEMBER 1982

NOVEMBER 1982

NOVEMBER 1982

NOVEMBER 1982

NOVEMBER 1982

NOVEMBER 1982

NOVEMBER 1982

NOVEMBER 1982

NOVEMBER 1982

NOVEMBER 1982

NOVEMBER 1982

NOVEMBER 1982

NOVEMBER 1982

NOVEMBER 1982

NOVEMBER 1982

NOVEMBER 1982

NOVEMBER 1982

NOVEMBER 1982

NOVEMBER 1982

NOVEMBER 1982

NOVEMBER 1982

NOVEMBER 1982

NOVEMBER 1982

NOVEMBER 1982

NOVEMBER 1982

NOVEMBER 1982

NOVEMBER 1982

NOVEMBER 1982

NOVEMBER 1982

NOVEMBER 1982

NOVEMBER 1982

NOVEMBER 1982

NOVEMBER 1982

NOVEMBER 1982

NOVEMBER 1982

NOVEMBER 1982

NOVEMBER 1982

NOVEMBER 1982

NOVEMBER 1982

NOVEMBER 1982

NOVEMBER 1982

NOVEMBER 1982

NOVEMBER 1982

NOVEMBER 1982

NORTHWESTERN  
TITLE COMPANY

White Rum and Tom  
The New Summer C  
RUMS OF PUERTO RICO

OFFICES FOR LEA  
FRANKLIN BLDG.  
763-2911

2ASA721

172421

The Oakland Y. W. C. A. Building  
1515 Webster Street, Oakland  
Alameda County, California

Levester Burnley  
Negative at Y. W. C. A.  
July 1984

View: Streetscape showing main facade and  
north side, camera looking south on  
Webster Street.

Photo #9 of 10



The Oakland Y. W. C. A. Building  
1515 Webster Street, Oakland  
Alameda County, California

Date: not given (appears to be taken  
shortly after construction)

Photographer: Unknown

View: Historic view of main(east) facade on  
Webster Street, camera looking west.

Photo #10 of 10

Copy negative at YWCA