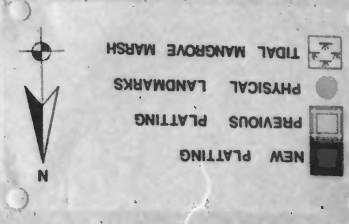
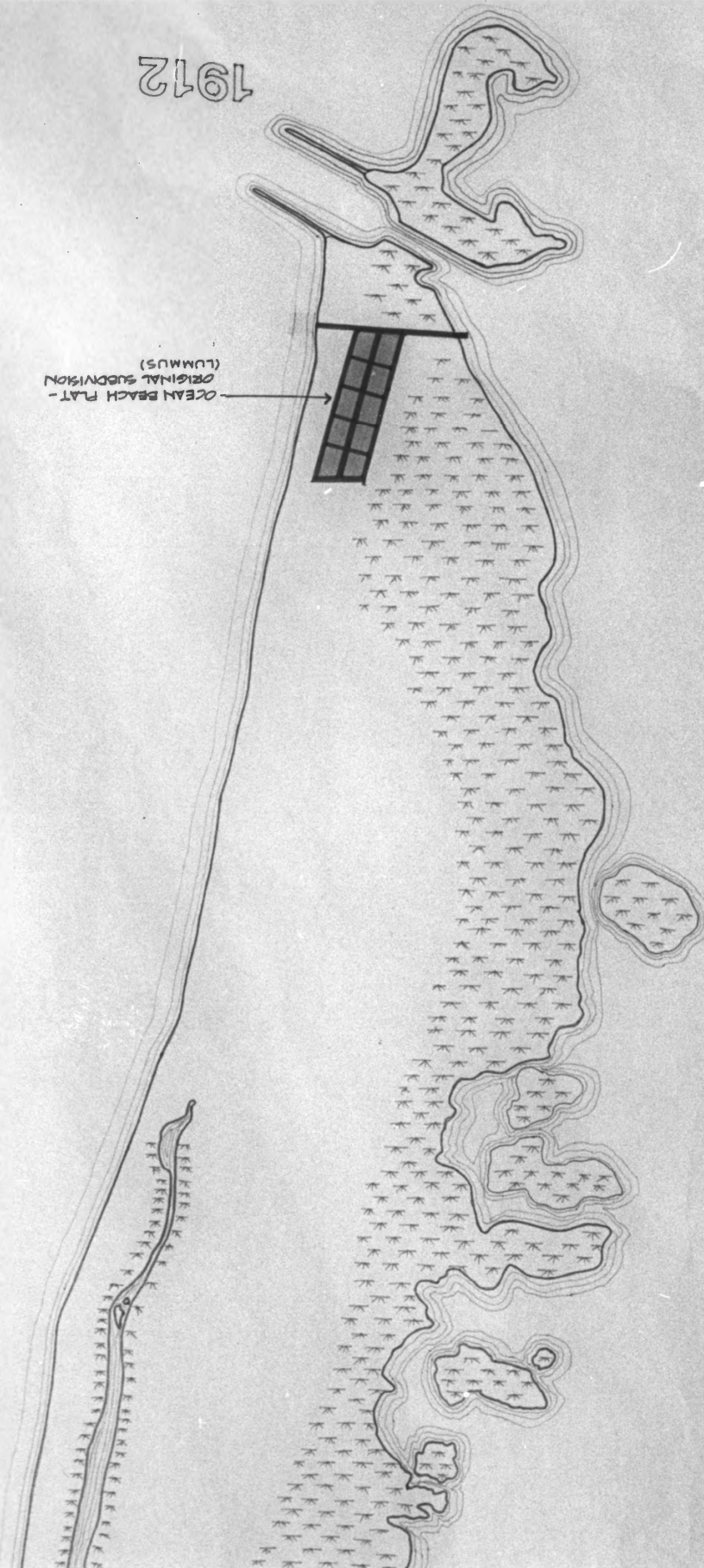


1912

OCEAN BEACH PLAT -
ORIGINAL SUBDIVISION
(LUMMUS)



A legend and north arrow located in the upper right corner of the map. The legend includes four items: 'NEW PLATTING' represented by a solid black rectangle, 'PREVIOUS PLATTING' represented by a white rectangle with a black border, 'PHYSICAL LANDMARKS' represented by a solid black circle, and 'TIDAL MANGROVE MARSH' represented by a square containing a pattern of small, stylized trees. To the left of the legend is a north arrow pointing upwards, with the letter 'N' positioned below it.



Miami Beach Architectural District
Dade County

1. Miami Beach Plat, 1912
2. Miami Beach, Florida
3. Miami Design Preservation League
4. 1978
5. Division of Archives, History and Records
Management
6. Map
7. Photo #1

22 1979

1913

Legend:

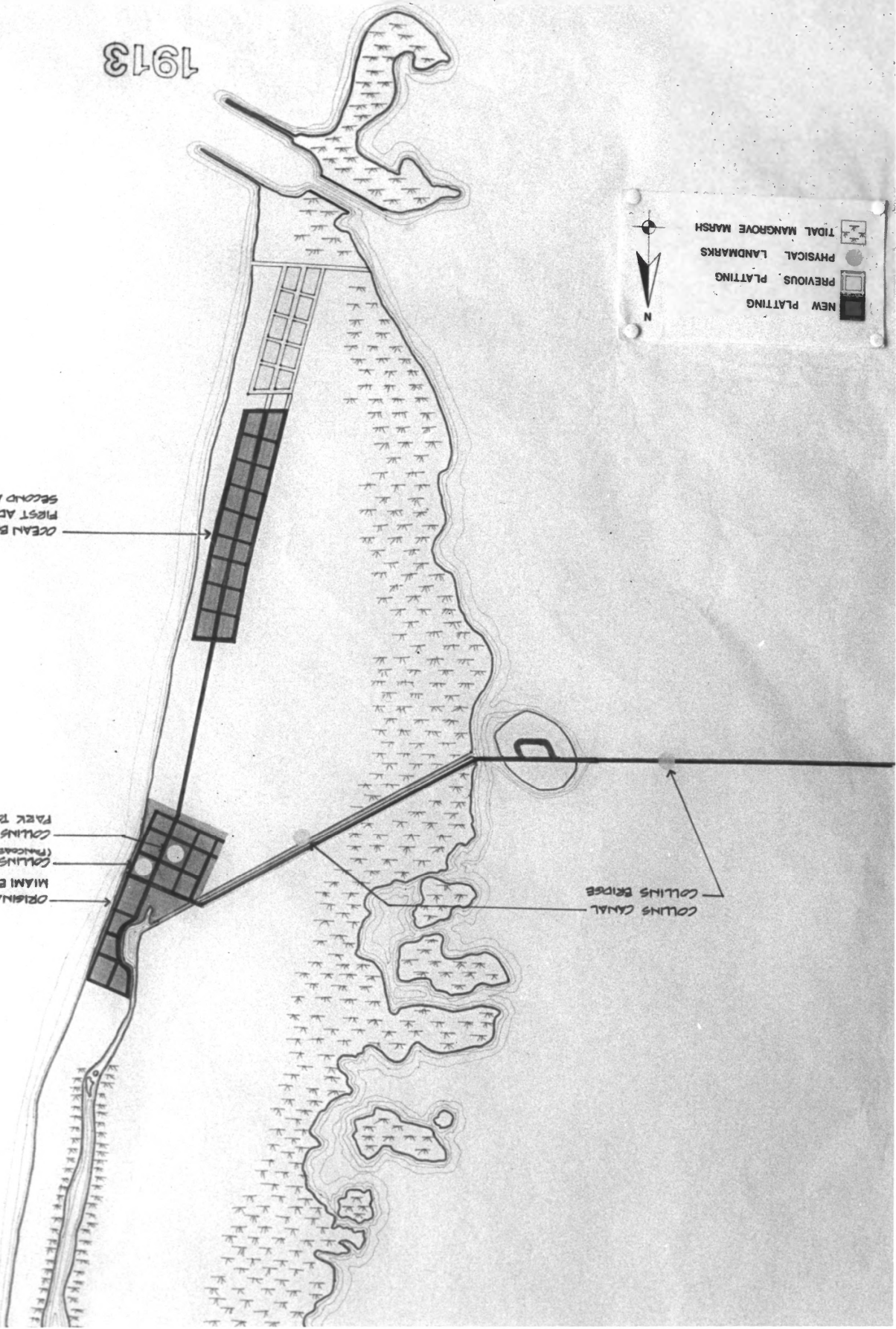
- TIDAL MANGROVE MARSH (hatched pattern)
- PHYSICAL LANDMARKS (circle)
- PREVIOUS PLATTING (dotted pattern)
- NEW PLATTING (solid black)

North arrow pointing up, labeled 'N'.

OCEAN BEACH PLAT -
FIRST ADDITION &
SECOND ADDITION

ORIGINAL COLLINS PLAT -
MIAMI BEACH IMPROVEMENT CO.
COLLINS BATHING RAILLON
(PARKWAY)
COLLINS DECATES 3 BLOCK
PARK TO CITY OF MIAMI

COLLINS CANAL
COLLINS BRIDGE



Miami Beach Architectural District
Dade County

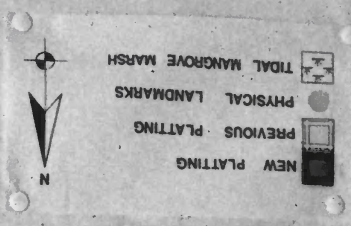
1. Miami Beach Plat, 1913
2. Miami Beach, Florida
3. Miami Design Preservation League
4. 1978
5. Florida Division of Archives, History
and Records Management
6. Map
7. Photo #2

MAY 14 1979

MAR 22 1979

1914

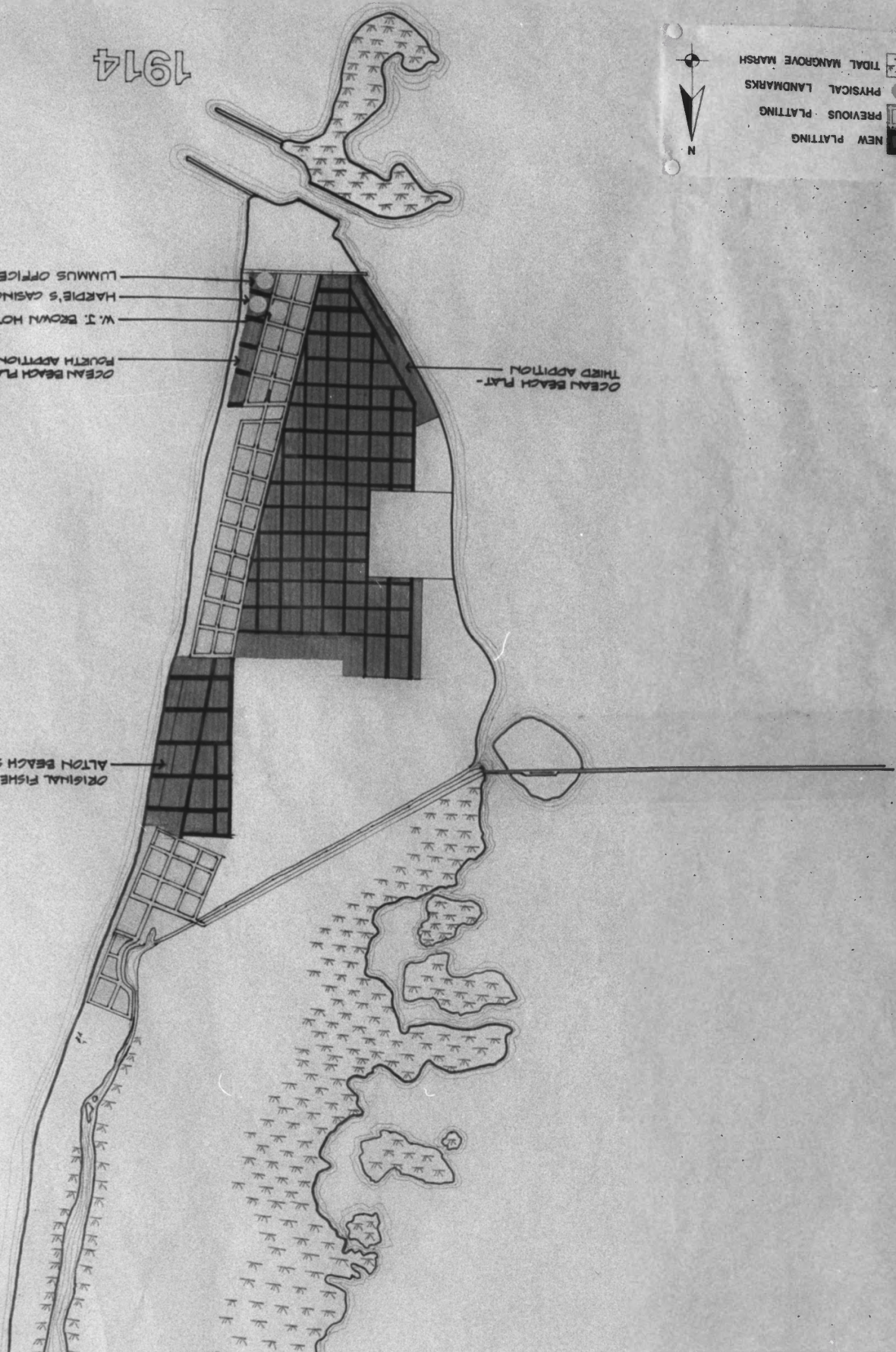
NEW PLATTING
PREVIOUS PLATTING
PHYSICAL LANDMARKS
TIDAL MANGROVE MARSH



A legend in the top right corner defines the map's symbology. It includes a north arrow pointing upwards, labeled 'N'. Below it, four categories are listed with corresponding symbols: 'NEW PLATTING' (represented by a solid black square), 'PREVIOUS PLATTING' (represented by a square with a grid pattern), 'PHYSICAL LANDMARKS' (represented by a solid black circle), and 'TIDAL MANGROVE MARSH' (represented by a square with a pattern of small 'K' characters).

OCEAN BEACH PLAT - THIRD ADDITION
OCEAN BEACH PLAT - FOURTH ADDITION
W. J. BROWN HOTEL
HARPIE'S CASINO
LUMMUS OFFICE BUILDING

ALTON BEACH SUBDIVISION
ORIGINAL FISHER PLAT



Miami Beach Architectural District
Dade County

1. Miami Beach Plat, 1914
2. Miami Beach, Florida
3. Miami Design Preservation League
4. 1978
5. Florida Division of Archives, History and
Records Management
6. Map
7. Photo #3

MAR 22 1979



BOTTOM OF FILL

N

Y

A

C

S

B

3

C

O

C

T

N

L

A

T

N

OFFICIAL MAP

OF THE
CITY OF

MIAMI BEACH
FLORIDA

INCORPORATED 1917

COPIED FROM REVISED PLATS SUBMITTED TO THE CITY ENGINEER BY
FRANK G. BRIDGMAN, REG. ENGR. NO. 1206. CITY ENGINEER
SCALE IN FEET - - - - - REUSED

NOTE :

RED LINE ~ INDICATES ORIGINAL
MANGROVE LINE
BLUE LINE ~ INDICATES ORIGINAL
5 FT. CONTOUR = EDGE
OF FILLED LAND.

AVERAGE ELEVATION OF MANGROVE AREAS = +1.2'

SOUTH MIAMI BEACH

HISTORIC AND PRESERVATION STUDIES

Miami Beach Architectural District
Dade County

1. Miami Beach Plat, 1978
2. Miami Beach, Florida
3. Miami Design Preservation League
4. 1978
5. Florida Division of Archives, History and
Records Management
6. Historic and Preservation Studies
7. Photo #4



*Miami Beach Architectural District
Dade County*

1. Lummus Park
2. Miami Beach, Florida
3. Dan Deibler
4. 1978
5. Florida Division of Archives, History and
Records Management
6. View North
7. Photo #5



Leslie
HOTEL

CARLYLE

BILTMORE

Miami Beach Architectural District
Dade County

1. Ocean Drive
2. Miami Beach, Florida
3. Dan Deibler
4. 1978
5. Florida Division of Archives, History and
Records Management
6. View North from 1200 block
7. Photo #6

MAY 14 1979

MAR 22 1979



Miami Beach Architectural District
Dade County

1. The Tides Hotel
2. Miami Beach, Florida
3. Dan Deibler
4. 1978
5. Florida Division of Archives, History and
Records Management
6. East facade
7. Photo #8

MAR 22 1979

MAY 14 1979



RESTAURANT
FALICE
BARBERS

Miami Beach Architectural District
Dade County

1. Amsterdam Palace Hotel
2. Miami Beach, Florida
3. Dan Deibler
4. 1978
5. Florida Division of Archives, History and
Records Management
6. East facade
7. Photo #9



Miami Beach Architectural District
Dade County

1. Collins Avenue
2. Miami Beach, Florida
3. J. L. Currais
4. 1978
5. Florida Division of Archives, History and
Records Management
6. View South from 1500 Block
7. Photo #10

MAR 22 1979

MAY 14 1979



St. Moritz

ROYAL PALM

ST. MORITZ

*Miami Beach Architectural District
Dade County*

1. St. Moritz, Poinciana and Royal Palm
Hotels
2. Miami Beach, Florida
3. J. L. Curraís
4. 1978
5. Florida Division of Archives, History and
Records Management
6. West facades
7. Photo #11

MAR 22 1979



*Miami Beach Architectural District
Dade County*

1. Collins Avenue
2. Miami Beach, Florida
3. Dan Deibler
4. 1978
5. Florida Division of Archives, History and
Records Management
6. View northeast from 11th Street
7. Photo #12

MAR 22 1979

MAY 14 1979



Miami Beach Architectural District
Dade County

1. Collins Avenue
2. Miami Beach, Florida
3. J. L. Currais
4. 1978
5. Florida Division of Archives, History and
Records Management
6. View southeast from 1800 block
7. Photo #13

MAR 22 1979

MAY 14 1979



Miami Beach Architectural District
Dade County

1. Hotel Edward
2. Miami Beach, Florida
3. Dan Deibler
4. 1978
5. Florida Division of Archives, History and
Records Management
6. North and west facades
7. Photo #14

MAR 22 1979

MAY 14 1979



PETER MILLER
HOTEL

Norma Beauty Salon

Miami Beach Architectural District
Dade County

1. Peter Miller Hotel
2. Miami Beach, Florida
3. Miami Design Preservation League
4. 1978
5. Florida Division of Archives, History and
Records Management
6. East facade
7. Photo #15

MAR 22 1979

MAY 14 1979

ABB
HOTEL

FILLARD EAST
APTS EFFCYS
AIR COND



ABB
HOTEL



Miami Beach Architectural District
Dade County

1. 21st Street
2. Miami Beach, Florida
3. J. L. Currais
4. 1978
5. Florida Division of Archives, History and
Records Management
6. View west from Liberty Avenue
7. Photo #16

MAR 22 1979

MAY 14 1979



Miami Beach Architectural District
Dade County

1. Governor Hotel
2. Miami Beach, Florida
3. Dan Deibler
4. 1978
5. Florida Division of Archives, History and
Records Management
6. East facade
7. Photo #17



Miami Beach Architectural District
Dade County

1. Plymouth Hotel
2. Miami Beach, Florida
3. Miami Design Preservation League
4. 1978
5. Florida Division of Archives, History and
Records Management
6. North and west facades
7. Photo #18

MAY 14 1979

MAR 22 1979



Miami Beach Architectural District
Dade County

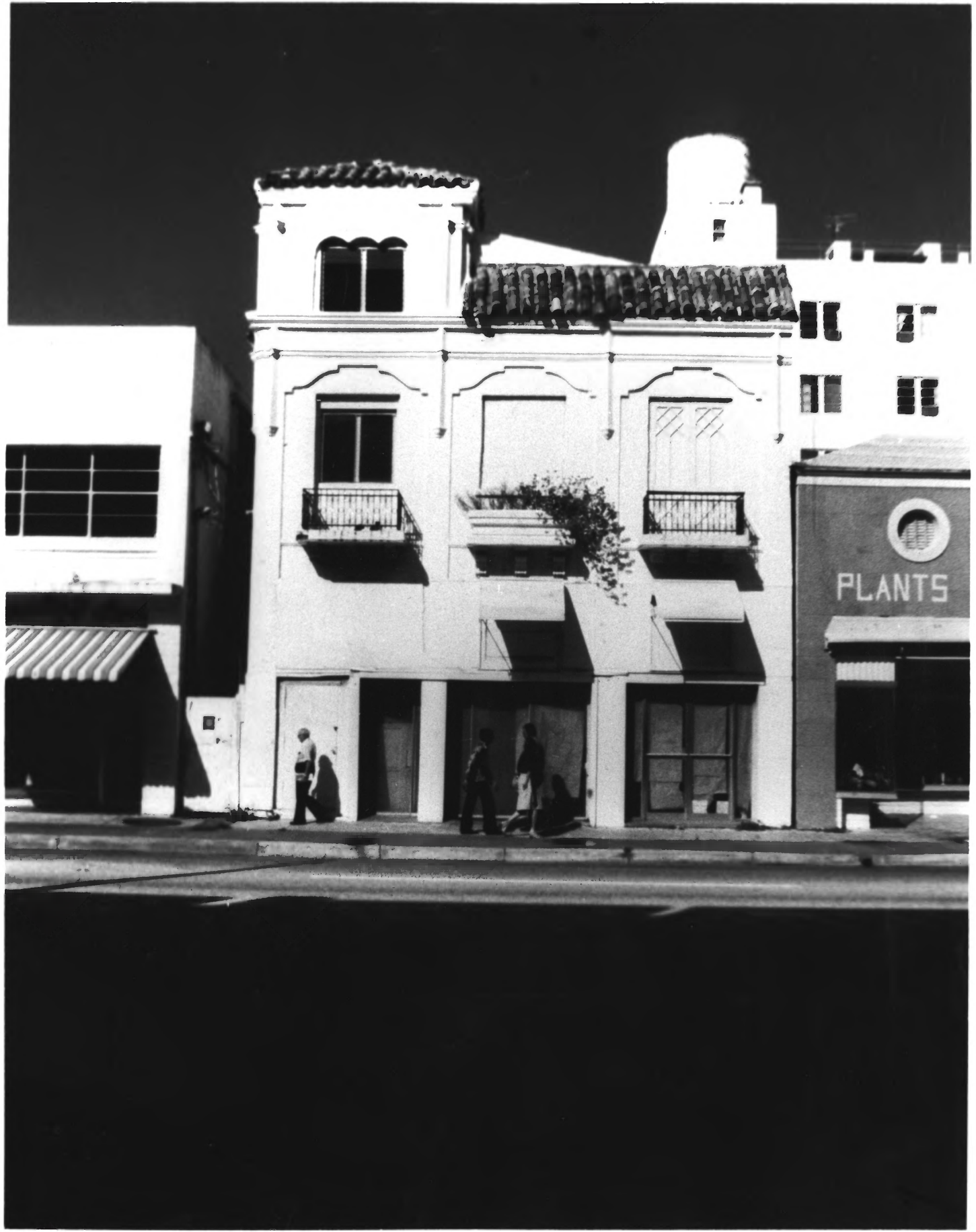
1. Bass Museum of Art
2. Miami Beach, Florida
3. Miami Design Preservation League
4. 1978
5. Florida Division of Archives, History and
Records Management
6. West facade
7. Photo #19

MAR 22 1979



*Miami Beach Architectural District
Dade County*

1. Collins Park, Parking Lot
2. Miami Beach, Florida
3. Miami Design Preservation League
4. 1978
5. Florida Division of Archives, History and
Records Management
6. View south from 22nd Street
7. Photo #20



PLANTS

Miami Beach Architectural District
Dade County

1. The Campanile
2. Miami Beach, Florida
3. Dan Deibler
4. 1978
5. Florida Division of Archives, History and
Records Management
6. East facade
7. Photo #21

MAR 22 1979

MAY 14 1979



CAFETERIA GROCERY
Café Cubano SANDWICH

MARKET
CAFETERIA
GROCERY

*Miami Beach Architectural District
Dade County*

1. Palm Court Hotel
2. Miami Beach, Florida
3. Miami Design Preservation League
4. 1978
5. Florida Division of Archives, History and
Records Management
6. South and East facades
7. Photo #22

MAY 14 1979

MAR 22 1979



Miami Beach Architectural District
Dade County

1. Ground of the former Miami Beach Golf Links
2. Miami Beach, Florida
3. Miami Design Preservation League
4. 1978
5. Florida Division of Archives, History and Records Management
6. View west
7. Photo #23

MAY 14 1979

MAR 22 1979



COMMUNITY CENTER

Miami Beach Architectural District
Dade County

1. Miami Beach Community Center Building
2. Miami Beach, Florida
3. Miami Design Preservation League
4. 1978
5. Florida Division of Archives, History and
Records Management
6. Southeast facade
7. Photo #24

MAR 22 1979



*Miami Beach Architectural District
Dade County*

1. Washington Avenue
2. Miami Beach, Florida
3. J. L. Currais
4. 1978
5. Florida Division of Archives, History and
Records Management
6. View southeast from 7th Street:
7. Photo #25

MAY 14 1979

MAR 22 1979



Miami Beach Architectural District
Dade County

1. Washington Avenue
2. Miami Beach, Florida
3. Miami Design Preservation League
4. 1978
5. Florida Division of Archives, History and
Records Management
6. View southeast from Espanola Way
7. Photo #26



Miami Beach Architectural District
Dade County

1. Miami Beach City Hall (former)
2. Miami Beach, Florida
3. Miami Design Preservation League
4. 1978
5. Florida Division of Archives, History and Records Management
6. East facade
7. Photo #27



Miami Beach Architectural District
Dade County

1. Washington Storage
2. Miami Beach, Florida
3. Miami Design Preservation League
4. 1978
5. Florida Division of Archives, History and
Records Management
6. West facade
7. Photo #28



Miami Beach Architectural District
Dade County

1. United States Post Office
2. Miami Beach, Florida
3. Miami Design Preservation League
4. 1978
5. Florida Division of Archives, History and
Records Management
6. Southeast facade
7. Photo #29



S.H. KRESS & CO.

KRESS

AMERICAN

FOR RENT
521 5202

OR MEDICAL CENTER
DENT DENTAL
LABORATORY
DENT DENTAL

NO JAY WALKING
500 FINE

Miami Beach Architectural District
Dade County

1. S. H. Kress and Company Building
2. Miami Beach, Florida
3. Dan Deibler
4. 1978
5. Florida Division of Archives, History and
Records Management
6. West facade
7. Photo #30

MAR 22 1979

MAY 1 1979



Miami Beach Architectural District
Dade County

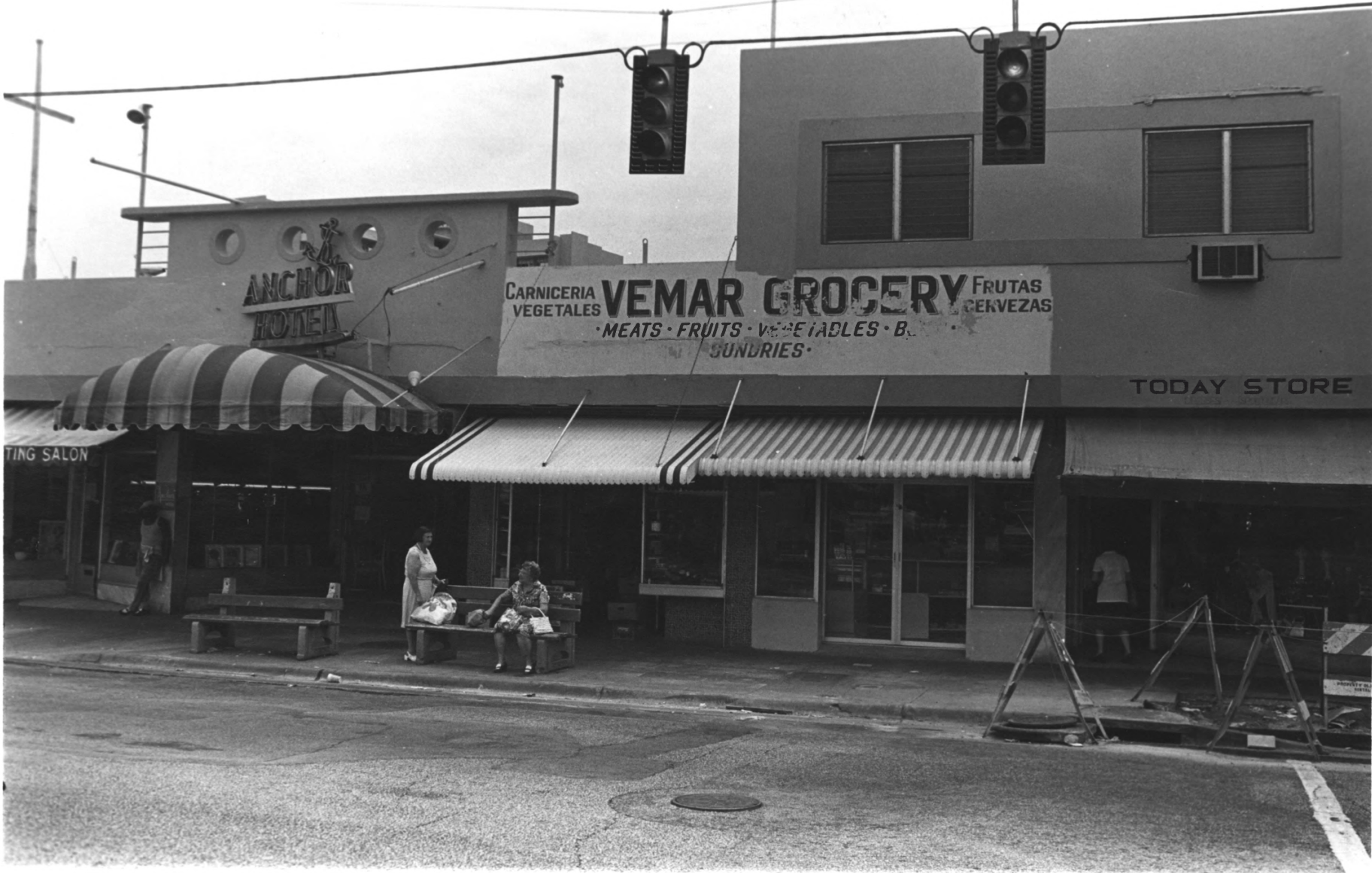
1. Leroy D. Fienberg Elementary School
2. Miami Beach, Florida
3. Dan Deibler
4. 1978
5. Florida Division of Archives, History and
Records Management
6. West facade
7. Photo #31

ANCHOR
HOTEL

CARNICERIA VEGETALES **VEMAR GROCERY** FRUTAS CERVEZAS
• MEATS • FRUITS • VEGETABLES • BREADS • SUNDRIES •

TODAY STORE

TING SALON



Miami Beach Architectural District
Dade County

1. Anchor Hotel
2. Miami Beach, Florida
3. Miami Design Preservation League
4. 1978
5. Florida Division of Archives, History and
Records Management
6. West facade
7. Photo #32



Miami Beach Architectural District
Dade County

1. Temple Emanu-el
2. Miami Beach, Florida
3. Dan Deibler
4. 1978
5. Florida Division of Archives, History and
Records Management
6. Southwest facade
7. Photo #33



Miami Beach Architectural District
Dade County

1. Lincoln Road Mall
2. Miami Beach, Florida
3. Miami Beach Preservation League
4. 1978
5. Florida Division of Archives, History and
Records Management
6. View west
7. Photo #34



*Miami Beach Architectural District
Dade County*

1. Lincoln Road Mall
2. Miami Beach, Florida
3. Miami Design Preservation League
4. 1978
5. Florida Division of Archives, History and
Records Management
6. View west
7. Photo #35

MAR 22 1979

BRONSTON BUILDING

Bentley's

B.E. BRONSTON AND ASSOCIATES
REALTORS



Miami Beach Architectural District
Dade County

1. Bronston Building
2. Miami Beach, Florida
3. Miami Design Preservation League
4. 1978
5. Florida Division of Archives, History
and Records Management
6. North facade
7. Photo #36



*Miami Beach Architectural District
Dade County, Florida*

1. Bronston Building
2. Miami Beach, Florida
3. Gleason Romer
4. 1942
5. Florida Division of Archives, History and
Records Management
6. North facade
7. Photo #37

MAR 22 1979

MAY 14 1970



Miami Beach Architectural District
Dade County

1. Northeast corner of Lincoln Road and Drexel Avenue
2. Miami Beach, Florida
3. Dan Deibler
4. 1978
5. Florida Division of Archives, History and Records Management
6. Southwest facade
7. Photo #38

MAR 22 1979

MAY 14 1979



*Sterling
Building*

53

*Miami Beach Architectural District
Dade County*

1. Sterling Building
2. Miami Beach, Florida
3. Miami Design Preservation League
4. 1978
5. Florida Division of Archives, History and
Records Management
6. South facade
7. Photo #39

MAR 22 1979

MAY 14 1979



ES

WATCH &
JEWELRY
REPAIRING
REGISTERED
DIAMOND
APPRAISER
ESTABLISHED
1925
740 S. D.

The DELI

THE DELI
ON THE

You'll

SEE THE

*Miami Beach Architectural District
Dade County*

1. The Deli Building
2. Miami Beach, Florida
3. Dan Deibler
4. 1978
5. Florida Division of Archives, History and
Records Management
6. South facade
7. Photo #41

MAR 22 1979



COMMUNITY BRANCH

WOMEN'S SOCIETY
WOMEN'S CLUB
WOMEN'S GUILD
WOMEN'S BIBLE CLASS
WOMEN'S SINGERS
WOMEN'S GARDEN
WOMEN'S CRAFTS
WOMEN'S BOOK CLUB

Miami Beach Architectural District
Dade County

1. Congregational Church
2. Miami Beach, Florida
3. Dan Deibler
4. 1978
5. Florida Division of Archives, History and
Records Management
6. North facade
7. Photo #42

MAR 22 1979

MAY 14 1979

Barnett
Bank

HERZFELD & ST. BN
100 NEW YORK STREET CORNER

MIAMI BEACH SIGHTSEEING TOURS 673-8297

MIAMI BEACH SIGHTSEEING TOURS

FLOOR
SHINE
GOODS

CARD OPENING



*Miami Beach Architectural District
Dade County*

1. Barnett Bank Building
2. Miami Beach, Florida
3. Dan Deibler
4. 1978
5. Florida Division of Archives, History
and Records Management
6. North facade
7. Photo #43

MAR 22 1979

MAY 14 1979



DAVID ALAN

DAVID ALAN

DAVID ALAN

DAVID ALAN

DAVID ALAN

DAVID ALAN

744

*Miami Beach Architectural District
Dade County*

1. David Alan Building
2. Miami Beach, Florida
3. Dan Deibler
4. 1978
5. Florida Division of Archives, History
and Records Management
6. West facade
7. Photo #44

MAR 22 1979

MAY 14 1979



Miami Beach Architectural District
Dade County

1. Pennsylvania Avenue
2. Miami Beach, Florida
3. J. L. Currais
4. 1978
5. Florida Division of Archives, History and
Records Management
6. View north from 15th Street
7. Photo #45

MAY 14 1979

MAR 22 1979



*Miami Beach Architectural District
Dade county*

1. 13th Street
2. Miami Beach, Florida
3. J. L. Currais
4. 1978
5. - Florida Division of Archives, History
and Records Management
6. View west from 700 block
7. Photo #46

MAY 14 1979

MAR 22 1979



1941-45
Rose Creek
APTS
1 BEDROOM
EFFICIENCIES

1. Rose Arms Apartments
2. Miami Beach, Florida
3. J. L. Currais
4. 1978
5. Florida Division of Archives, History and
Records Management
6. Southwest facade
7. Photo #47

Miami Beach Architectural District
Dade County

MAR 22 1979

MAY 14 1979



Miami Beach Architectural District
Dade County

1. Lenox Avenue
2. Miami Beach, Florida
3. J. L. Currais
4. 1978
5. Florida Division of Archives, History and
Records Management
6. View northeast from 900 block
7. Photo #48

MAR 22 1979



*Miami Beach Architectural District
Dade County*

1. Michigan Avenue
2. Miami Beach, Florida
3. J. L. Currais
4. 1978
5. Florida Division of Archives, History
and Records Management
6. View southeast from 900 block
7. Photo #49



*Miami Beach Architectural District
Dade County*

1. Northeast corner of Euclid Avenue and
16th Street
2. Miami Beach, Florida
3. J. L. Currais
4. 1978
5. Florida Division of Archives, History
and Records Management
6. View northeast
7. Photo #50

MAY 14 1979

MAR 22 1979



Miami Beach Architectural District
Dade County

1. Jefferson Avenue
2. Miami Beach, Florida
3. J. L. Currais
4. 1978
5. Florida Division of Archives, History and
Records Management
6. View southwest from 8th Street
7. Photo #51

MAY 14 1979

MAR 22 1979



Miami Beach Architectural District
Dade County

1. 11th Street
2. Miami Beach, Florida
3. J. L. Currais
4. 1978
5. Florida Division of Archives, History and Records Management
6. View northeast from Meridian Avenue
7. Photo #52

MAY 14 1979

MAR 22 1970



RIVIERA ARMS

Miami Beach Architectural District

Dade County

1. Euclid Avenue
2. Miami Beach, Florida
3. J. L. Currais
4. 1978
5. Florida Division of Archives, History
and Records Management
6. View northwest from 700 block
7. Photo #53



PRIVATE
PARKING
FOR ONLY

JOE'S
APARTMENTS
715 SUGAR BE

Miami Beach Architectural District
Dade County

1. Joe's Apartments
2. Miami Beach, Florida
3. J. L. Currais-
4. 1978
5. Florida Division of Archives, History and
Records Management
6. East and south facades
7. Photo #54

MAR 22 1979



Miami Beach Architectural District
Dade County

1. Harmony Villa
2. Miami Beach, Florida
3. J. L. Currais
4. 1978
5. Florida Division of Archives, History and
Records Management
6. West facade
7. Photo #55

MAR 22 1979

MAY 14 1979



SUN APARTMENTS
NO VACANCY

1111
1111

Miami Beach Architectural District
Dade County

1. Chester Apartments
2. Miami Beach, Florida
3. J. L. Currais
4. 1978
5. Florida Division of Archives, History and
Records Management
6. North and west facades
7. Photo #56

MAY 14 1979

MAR 22 1979



Miami Beach Architectural District
Dade County

1. Helen's Apartments
2. Miami Beach, Florida
3. J. L. Currais
4. 1978
5. Florida Division of Archives, History
and Records Management
6. Detail--East Facade
7. Photo #57

MAR 22 1979



Miami Beach Architectural District
Dade County

MAR 22 1979

1. Palm Gardens Apartments
2. Miami Beach, Florida
3. J. L. Currais
4. 1978
5. Florida Division of Archives, History and
Records Management
6. East facade
7. Photo #58

MAY 14 1979



*Miami Beach Architectural
District Dade County*

MAR 22 1979

1. Southeast corner of Lenox Avenue and 14th Street
2. Miami Beach, Florida
3. Dan Deibler
4. 1978
5. Florida Division of Archives, History and Records Management
6. View southeast
7. Photo #59

MAY 14 1979



Miami Beach Architectural District

Dade County

MAR 22 1979

1. Lenox Avenue
2. Miami Beach, Florida
3. Miami Design Preservation League
4. 1978
5. Florida Division of Archives, History
and Records Management
6. View northwest from 1400 block
7. Photo #60

MAY 14 1979



Miami Beach Architectural District
Dade County

MAR 22 1979

1. Residence, 1400 Lenox Avenue
2. Miami Beach, Florida
3. Dan Deibler
4. 1978
5. Florida Division of Archives, History
and Records Management
6. South facade
7. Photo #61

NO
CAMPING
POLICE
PLS



Miami Beach Architectural
District Dade County

MAR 22 1979

1. Flamingo Park
2. Miami Beach, Florida
3. Miami Design Preservation League
4. 1978
5. Florida Division of Archives, History and
Records Management
6. View west
7. Photo #62



Miami Beach Architectural District
Dade County

MAR 22 1979

1. Ida M. Fisher Jr. High School
2. Miami Beach, Florida
3. J. L. Currais
4. 1978
5. Florida Division of Archives, History and
Records Management
6. View northwest from Drexel Avenue and 14th
Street
7. Photo #63

MAY 14 1979



MAR 22 1979

1. Southern Bell Telephone Company Building
2. Miami Beach, Florida
3. Dan Deibler
4. 1978
5. Florida Division of Archives, History and
Records Management
6. East facade
7. Photo #64

*Miami Beach Architectural District
Dade County*

MAY 14 1979



MAR 22 1979

1. Grace Hotel Building
2. Miami Beach, Florida
3. Miami Design Preservation League
4. 1978
5. Florida Division of Archives, History
and Records Management
6. East facade
7. Photo #65

Miami Beach Architectural District
Dade County

MAY 14 1979



SHOW
REPA
A

RESTAURANT

BEACH
POULTRY

CASTRO P

TOOLS

W-83114

Miami Beach Architectural District
Dade County

MAR 22 1979

1. Espanola Way
2. Miami Beach, Florida
3. Miami Design Preservation League
4. 1978
5. Florida Division of Archives, History and
Records Management
6. View west from Washington Avenue
7. Photo #66



Miami Beach Architectural District
Dade County

MAR 22 1979

1. Espanola Way
2. Miami Beach, Florida
3. Dan Deibler
4. 1978
5. Florida Division of Archives, History and Records Management
6. View east from Jefferson Court
7. Photo #57

MAY 14 1979



1

1/37

Miami Beach Architectural H.D.

(Additional Information)

Miami - Dade Co., FL



Lincoln
Arms

2

Miami Beach Architectural H.D.
(Additional Information)

2/37

Miami - Dade Co., FL



1800

Garibaldi

Miami Beach Architecture H.D.

(Additional Information)

Miami - Dade Co., FL

3

3/37



Miami Beach Architectural H.D.

(Additional Information)

Miami - Dade Co., FL

4

4/37



5

Miami Beach Architectural A.D.

(Additional Information)

Miami-Dade Co., FL

5/37





FOR SALE
BY OWNER
800-555-1234

1227

Miami Beach Architectural U.D.

(Additional Information)

7
7/37 Miami - Dade Co., FL



8

Miami Beach Architectural H.D.

(Additional Information)

8/37

Miami - Dade Co., FL



Miami Beach Architectural H.D.

9

(Additional Information)

9/37 Miami - Dade Co., Fl



WASHINGTON AV

12-10-1967

NO TURN ON RED

Jeep

M 5-388

10

Miami Beach Architectural 4.3.
(Additional Information)

10/37

Miami - Dale Co., FL



#11

Miami Beach Architecture H. D.

11/37

(Additional Information)

Miami - Dade Co., FL



#12

Miami Beach Architectural H.D.

12/37

(Additional Information)

Miami - Dade Co., FL

HARVEY BLDG
ENTRANCE
1370 WASHINGTON AVE

402

DELAWARE

240



13

Miami Beach Architectural A.D.

13/37

(Additional Information)

Miami - Dade Co., FL



#14

Miami Beach Architectural H.D.

14/37 (Additional Information)

Miami - Dade Co., FL



295 LINCOLN RD.
ENTRANCE

#15

Miami Beach Architectural H.D.

15/37 (Additional Information)

Miami - Dade Co., FL



16

Miami Beach Architects A.D.

16/37 (Additional Information)

Miami - Dade Co., FL



LINCOLN
BUILDING

LUGGAGE GALLERY.COM

#17

Miami Beach Architectural H.D.

17/37 (Additional Information)

Miami - Dade Co., FL



#18

Miami Beach Architectural H.D.

18/37 (Additional Information)

Miami-Dade Co., FL

BANANA REPUBLIC

LINCOLN RD MALL

BANANA REPUBLIC



19

Miami Beach Architectural A.D.

19/37

(Additional Information)

Miami - Dade Co., Fla

CHASE
FEDERAL



BUILDING

1630

20

Miami Beach Architectural A.D.

2437 (Additional Information)

Miami -Dade Co., FL



M

THE *Surfcomber*

CHARLES

MIAMI BEACH
POLICE

3626

#21

Miami Beach Architectural H.D.

21/37 (Additional Information)

Miami - Dade Co., FL



#22

Miami Beach Architecture A.D.

22/37

(Additional Information)

Miami - Dade Co., FL



23

Miami Beach Architectural H.D.

23/37

(Additional Information)

Miami-Dade Co., FL



#24

Miami Beach Architectural A.D.

24/37 (Additional Information)

Miami - Dade Co., FL



SHERBROOKE

SHERBROOKE
HOTEL
1915



#25

Miami Beach Architectural H.D.

25/37 (Additional Information)

Miami-Dade Co., FL



26

26/37

Miami Beach Architectural A.D.

(Additional Information)

Miami-Dade Co., FL



Castro

Castro
2-3333

28

Miami Beach Architectural H.D.

28/37

(Additional Information)

Miami - Dale Co., FL



27

Miami Beach Architectural H.D.

27/37 (Additional Information)

Miami - Dade Co., FL



683-39

29

Miami Beach Architectural H.D.

29/37 (Additional Information)

Miami-Dade Co., FL



M

WITH SEAS

1116

#30

Miami Beach Architectural A.D.

29/37 (Additional Information)

Miami-Dade Co., FL



31

Miami Beach Architectural H.D.

31/37

Miami - Dade Co., FL

(Additional Information)



32

Miami Beach Architectural H.D.

32/37

(Additional Information)

Miami - Dale Co., FL



San Juan

USA TODAY

USA TODAY

USA TODAY

USA TODAY

#33

Miami Beach Architectural N.D.

33/37

(Additional Info.)

Miami - Dade Co., FL



34

Miami Beach Architectural H.D.

34/37

(Additional Information)

Miami Dade Co., FL



EL COMODORO
HOTEL

COLLINS AVE
A1A

35

Miami Beach Architectural H.D.

35/37

(Additional Information)

Miami - Dade Co., FL



36

Miami Beach Architectural H.D.

(Additional Information)

36/37

Miami-Dade Co., FL



37

Miami Beach Architectural

37/37

H.D. (Additional Info.)

Miami - Dale Co., FL



