

**United States Department of the Interior
National Park Service**

**National Register of Historic Places
Continuation Sheet**

Section number _____ Page _____

SUPPLEMENTARY LISTING RECORD

NRIS Reference Number: 02001232

Date Listed: October 24, 2002


Property Name: Emerson Hough Elementary School

County: Jasper

State: Iowa

Public Schools for Iowa: Growth and Change
Multiple Name

This property is listed in the National Register of Historic Places in accordance with the attached nomination documentation subject to the following exceptions, exclusions, or amendments, notwithstanding the National Park Service certification included in the nomination documentation.

for 
Signature of the Keeper

October 24, 2002
Date of Action

Amended Items in Nomination:

Section 8. Statement of Significance

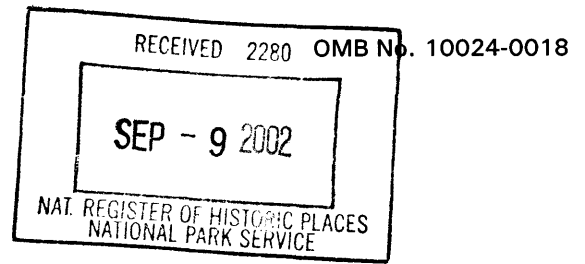
"1994" is hereby deleted as a significant date because it is not within the period of significance.

The Iowa State Historic Preservation Office was notified of this amendment.

DISTRIBUTION:

- National Register property file**
- Nominating Authority (without nomination attachment)**

AUG 7 2002



1232

United States Department of the Interior
National Park Service

**NATIONAL REGISTER OF HISTORIC PLACES
REGISTRATION FORM**

This form is for use in nominating or requesting determinations for individual properties and districts. See instructions in How to Complete the National Register of Historic Places Registration Form (National Register Bulletin 16A). Complete each item by marking "x" in the appropriate box or by entering the information requested. If any item does not apply to the property being documented, enter "N/A" for "not applicable." For functions, architectural classification, materials, and areas of significance, enter only categories and subcategories from the instructions. Place additional entries and narrative items on continuation sheets (NPS Form 10-900a). Use a typewriter, word processor, or computer, to complete all items.

1. Name of Property

historic name Emerson Hough Elementary School

other names/site number

2. Location

street & number 700 N. 4th Avenue East not for publication N/A

city or town Newton vicinity N/A

state Iowa code IA county Jasper code 99 zip code 50208

3. State/Federal Agency Certification

As the designated authority under the National Historic Preservation Act of 1966, as amended, I hereby certify that this X nomination ___ request for determination of eligibility meets the documentation standards for registering properties in the National Register of Historic Places and meets the procedural and professional requirements set forth in 36 CFR Part 60. In my opinion, the property X meets ___ does not meet the National Register Criteria. I recommend that this property be considered significant ___ nationally X statewide X locally.

(___ See continuation sheet for additional comments.)

Rowell G. Soike
Signature of certifying official

August 28, 2002
Date

STATE HISTORICAL SOCIETY OF IOWA

State or Federal agency and bureau

In my opinion, the property ___ meets ___ does not meet the National Register criteria.

(___ See continuation sheet for additional comments.)

Signature of commenting or other official

Date

State or Federal agency and bureau

4. National Park Service Certification

I hereby certify that this property is:

entered in the National Register
See continuation sheet.

determined eligible for the
National Register

See continuation sheet.

determined not eligible for the
National Register

removed from the National Register

other (explain):

Daniel J. Vivian 10/24/02

f _____
Signature of the Keeper

Date of Action

5. Classification

Ownership of Property

(Check as many boxes as apply.)

- private
- public-local
- public-State
- public-Federal

Category of Property

(Check only one box.)

- building(s)
- district
- site
- structure
- object

Number of Resources within Property

Contributing	Noncontributing	
<u>1</u>	_____	buildings
_____	_____	sites
_____	<u>1</u>	structures
_____	_____	objects
<u>1</u>	<u>1</u>	Total

Number of contributing resources previously listed in the National Register: 0

Name of related multiple property listing (enter "N/A" if property is not part of a multiple property listing):

Public Schools for Iowa: Growth and Change, 1848-1966

Name of Property or District
County, State

Emerson Hough Elementary School
Jasper County, Iowa

6. Function or Use

Historic Functions (enter categories from instructions)

Cat: EDUCATION Sub: School

Current Functions (enter categories from instructions)

Cat: EDUCATION Sub: School

7. Description

Architectural Classification (enter categories from instructions):

Cat: LATE 19th AND 20th CENTURY REVIVALS Sub: Italian Renaissance Revival

Materials (enter categories from instructions):

foundation CONCRETE
roof ASPHALT
walls BRICK

other

Narrative Description (Describe the historic and current condition of the property on one or more continuation sheets.)

8. Statement of Significance

Applicable National Register Criteria

(Mark "x" in one or more boxes for the criteria qualifying the property for National Register listing.)

- A Property is associated with events that have made a significant contribution to the broad patterns of our history.
- B Property is associated with the lives of persons significant in our past.
- C Property embodies the distinctive characteristics of a type, period, or method of construction or represents the work of a master, or possesses high artistic values, or represents a significant and distinguishable entity whose components lack individual distinction.
- D Property has yielded, or is likely to yield information important in prehistory or history.

Criteria Considerations

(Mark "x" in all the boxes that apply.)

- A owned by a religious institution or used for religious purposes
- B removed from its original location
- C a birthplace or a grave
- D a cemetery
- E a reconstructed building, object, or structure
- F a commemorative property
- G less than 50 years of age or achieved significance within the past 50 years

Areas of Significance (enter categories from instructions):

EDUCATION

Period of Significance

1927-1952

Significant Dates

1927
1994

Significant Person (complete if Criterion B is marked above)

N/A

Cultural Affiliation

Architect/Builder

Unknown

Narrative Statement of Significance (Explain the significance of the property on one or more continuation sheets.)

9. Major Bibliographical References

(Cite the books, articles, and other sources used in preparing this form on one or more continuation sheets.)

Previous documentation on file (NPS)

- preliminary determination of individual listing (36 CFR 67) has been requested.
- previously listed in the National Register
- previously determined eligible by the National Register
- designated a National Historic Landmark
- recorded by Historic American Buildings Survey #
- recorded by Historic American Engineering Record #

Primary Location of Additional Data

- State Historic Preservation Office
- Other State agency
- Federal agency
- Local government
- University
- Other

Name of repository

10. Geographical Data

Acreage of Property: 2 Acres

UTM References (Place additional UTM references on a continuation sheet)

	Zone	Easting	Northing		Zone	Easting	Northing
1	<u>15</u>	<u>496272.469</u>	<u>4616615.101</u>	3	<u> </u>	<u> </u>	
2	<u> </u>	<u> </u>	<u> </u>	4	<u> </u>	<u> </u>	

See continuation sheet.

Verbal Boundary Description (Describe the boundaries of the property on a continuation sheet.)

Boundary Justification (Explain why the boundaries were selected on a continuation sheet.)

Name of Property or District
County, State

Emerson Hough Elementary School
Jasper County, Iowa

11. Form Prepared By

name/title Camilla Deiber, Architectural Historian

organization The Louis Berger Group, Inc. date 7/10/02

street & number 950 50th Street telephone 319-373-3043

city or town Marion state Iowa zip code 52302

Additional Documentation

(Submit the following items with the completed form.)

Continuation Sheets

Maps: A USGS map (7.5 or 15 minute series) indicating the property's location.

A sketch map for historic districts and properties having large acreage or numerous resources.

Photographs: Representative black and white photographs of the property.

Additional items (check with the SHPO or FPO for any additional items)

Property Owner

(Complete this item at the request of the SHPO or FPO.)

name Newton Community School District, Superintendent Phil Hintz

street & number 807 S. 6th Avenue W telephone 641-792-5809

city or town Newton state Iowa zip code 50208

Paperwork Reduction Act Statement: This information is being collected for applications to the National Register of Historic Places to nominate properties for listing or determine eligibility for listing, to list properties, and to amend existing listings. Response to this request is required to obtain a benefit in accordance with the National Historic Preservation Act, as amended (16 U.S.C. 470 et seq.).

Estimated Burden Statement: Public reporting burden for this form is estimated to average 18.1 hours per response including the time for reviewing instructions, gathering and maintaining data, and completing and reviewing the form. Direct comments regarding this burden estimate or any aspect of this form to the Chief, Administrative Services Division, National Park Service, P.O. Box 37127, Washington, DC 20013-7127; and the Office of Management and Budget, Paperwork Reductions Project (1024-0018), Washington, DC 20503.

United States Department of the Interior
National Park Service

NATIONAL REGISTER OF HISTORIC PLACES CONTINUATION SHEET

Section 7 Page 1 name of property Emerson Hough Elementary School
county, state Jasper County, Iowa

DESCRIPTION SUMMARY

The Emerson Hough Elementary School, built in 1927, is a two-story Italian Renaissance Revival brick building that was the first school in Iowa built to implement the Platoon school plan. The main (south) facade has a high degree of integrity. However, a large modern addition has been constructed onto the north facade. Much of interior was gutted in 1993 when the modern addition was constructed. The only intact spaces in the building are the gymnasium and the front central hallway.

GENERAL DESCRIPTION

The Emerson Hough Elementary School is located at 700 N. 4th Avenue East in Newton, Iowa. The school building and surrounding playground occupies an entire city block. A large addition has been constructed onto the north side of the structure. The original section of the school faces south with open lawns to its west and south. A row of large evergreens stands between the building and the street. A large parking lot is situated to the east of the building.

The school building, built in 1927, is a rectangular two-story, brick structure. The front facade is ten bays wide; the outermost have two-story projecting bay windows. The inner eight bays feature two-story round arched openings. Entrances in the second and seventh bays have limestone architraves with a cornice supported by console brackets and decorated with arabesque scrollwork. Brick on the end bays of the front and side facades is rusticated, which emphasizes the horizontality of the building. The original wood sash in the two-story round arch windows has been replaced with modern metal fixed sash.

An L-shaped, one-story addition on the rear of the building, built in 1993, is constructed of buff colored brick and has a single belt course and modern, multi-pane casement windows. A cedar picnic shelter and picnic tables, located on the northeast side of the school, were also added to the property in 1993.

INTERIOR ARRANGEMENT

The interior of the school was completely gutted when the large addition was constructed in 1993. The current floor plan has a central hallway with two cross hallways in the north half of the school. A large gymnasium is located in the center of the south section and is lit by the large, two-story, round arch windows. Originally the spaces were arranged around an H-shaped hallway. The halls that once extended from the central hall to the main (south) facade were incorporated into the music and art rooms in the 1993 renovation. An auditorium was located across the hall from the gymnasium in the space that is now occupied by classrooms 101-107. Though extensive renovation has been done, some original elements remain, such as the east and west stairwells and the gymnasium.

The school is currently in use as an elementary school. The school district has no immediate plans for future addition or renovation of the school.

United States Department of the Interior
National Park Service

NATIONAL REGISTER OF HISTORIC PLACES CONTINUATION SHEET

Section 8 Page 2 name of property Emerson Hough Elementary School
county, state Jasper County, Iowa

SIGNIFICANCE SUMMARY

Emerson Hough Elementary School is significant statewide under Criterion A as it is associated with the development of the Platoon School educational system in Iowa, which divided each grade into two " platoons " that each spent one-half of the day learning fundamental subjects and the other half learning specialty subjects such as art. Evaluation of the Emerson Hough Elementary School for National Register eligibility is based upon criteria outlined in the Multiple Property Documentation Form *Public Schools for Iowa: Growth and Change, 1848-1966* (Beedle and Deiber 2002) under the property type "Platoon School." The school retains its association with the Platoon School movement even though the interior of the school has been extensively renovated, leaving only a central hallway and gymnasium intact. The interior of Emerson Hough Elementary School differed little from an ordinary elementary school except for the presence of spaces such as a gymnasium and auditorium. The Platoon system did not require a special floor plan but merely utilized interior spaces and teacher resources in a more efficient manner than contemporary elementary schools. The primary facades of the exterior remain intact, retaining the property's feeling and association.

RESOURCE HISTORY AND HISTORIC CONTEXT

Emerson Hough Elementary School was built in 1927 as a platoon school. Indeed it was the first school in Iowa to employ the Platoon system of education, which basically divides each grade into two groups, i.e. Group A and B. The platoon plan works as follows, Group A of third graders spends a specified block of time, usually the entire morning period, with one teacher learning the fundamentals such as reading, writing, arithmetic. Group B spends the morning period in special subjects such as physical education, art, music, science, industrial arts, etc. In the afternoon the groups switch. The platoon plan was seen as more economical because every space in the school was used throughout the day. Teachers in the platoon plan, who under the old system taught special subjects as well as fundamentals (whether they were trained for them or not), were able to focus their attention on the pupils' fundamentals, leaving the special subjects to teachers who were trained to teach them.

The Newton school system adopted the platoon plan in order to economize on the building of new elementary schools. From 1923 to 1927, enrollment in Newton's public schools increased 57 percent. The school system could not afford the several new school buildings needed to accommodate growing numbers of pupils. A single school, under the platoon plan, could house twice as many students as a conventional elementary (Berg 1928: 13).

According to a census of platoon schools taken in 1929, there were twenty-two schools in three Iowa cities, Newton, Ames and Cedar Rapids that adopted the platoon system.

THE PLATOON SCHOOL

William Wirt was born in Markle, Indiana and received a high school education in Bluffton, Indiana. While attending DePauw University, Mr. Wirt learned about John Dewey and his philosophy of education and began to formulate his own ideas on an educational system. In 1900 after graduating, Mr. Wirt returned to Bluffton as the city's superintendent of schools and developed the platoon system. Several years later Mr. Wirt became the superintendent of schools in Gary, Indiana, and implemented his platoon plan throughout the city's school system. In developing the platoon plan, Mr.

United States Department of the Interior
National Park Service

**NATIONAL REGISTER OF HISTORIC PLACES
CONTINUATION SHEET**

Section 8 Page 3 name of property Emerson Hough Elementary School
county, state Jasper County, Iowa

Wirt's was trying to bring the rural ideals of family, work and productivity to urban students; thereby enriching their lives and solving the urban social problems of the time. He introduced manual training and other practical courses into the school's curriculum in order to prepare all students for the life ahead.

The platoon plan was built upon the following principles, as explained by Shattuck O. Hartwell, Superintendent of Schools in Muskegon, Michigan:

1. Shops, gymnasiums, and an auditorium are added to the school building; playgrounds and school gardens are provided outside.
2. Through administrative readjustments all special rooms as well as all classrooms are used throughout the school day.
3. Several classes are accommodated simultaneously in auditoriums and gymnasiums.
4. Different groups of children come to school at different hours.
5. Libraries, churches, the Y.M.C.A., etc. are allied with the schools to the extent of caring for part of the children part of the time.

(Hartwell 1916:14-15)

The entire school system in Gary, Indiana utilized Wirt's platoon plan. By the 1910s, the platoon plan received national attention. The first platoon school outside of Gary was the Roosevelt School in Kalamazoo, Michigan. The Roosevelt School was organized as a platoon school in 1911 and by 1915 eight schools in Kalamazoo were using the platoon system. In 1914, the city of New York hired Mr. Wirt to introduce his system into the New York schools. Though the system was not successful in New York (it encountered political pressure from students, parents, and labor leaders); the platoon plan was implemented in over 200 cities during the 1920s reaching its height in popularity around 1925.

One of the reasons the system increased in popularity was the increased building capacity that resulted in the reorganization of conventional systems. Schools that switched from a conventional plan to the platoon school plan experienced anywhere from a 5% to a 35% increase in building capacity (Case 1931:231). Cities that were experiencing a drastic increase in school population could construct fewer schools and hire fewer administrative staff under the platoon system.

The National Association for the Study of the Platoon or Work-Study-Play School Organization was formed in 1925 to publicize the platoon system.

The school was named after Emerson Hough, who was born in Newton in 1857 and was a writer of numerous novels about the American West and founder of the Isaac Walton League. He grew up in Newton, graduating high school in 1875. He left Newton to teach school at Baxter for a year. He then attended the University of Iowa pursuing a degree in philosophy.

United States Department of the Interior
National Park Service

**NATIONAL REGISTER OF HISTORIC PLACES
CONTINUATION SHEET**

Section 9 Page 4 name of property Emerson Hough Elementary School
county, state Jasper County, Iowa

MAJOR BIBLIOGRAPHICAL REFERENCES

Berg, B. Conrad

1928 The Newton Plan. *The Platoon School* 2(1):13-16.

1931 The Newton Plan. *The Platoon School* 5(1&2):60-61.

Case, Roscoe David

1931 *The Platoon School in America*. Stanford University Press, Stanford University, California.

Hartwell, Shattuck O.

1916 *Overcrowded Schools and the Platoon Plan*. Survey Committee of the Cleveland Foundation, Cleveland, Ohio.

Reinheimer, Rita

1993 *Who was Emerson Hough?* Manuscript on file at the Newton Public Library, Newton, Iowa.

Unknown

1927 Newton's Platoon School. *Midland Schools* 42(4):138,154.

United States Department of the Interior
National Park Service

**NATIONAL REGISTER OF HISTORIC PLACES
CONTINUATION SHEET**

Section 10 Page 5 name of property Emerson Hough Elementary School
county, state Jasper County, Iowa

GEOGRAPHICAL DATA

Verbal Boundary Description

The National Register boundary for Emerson Hough Elementary School is depicted in a figure on the following page.

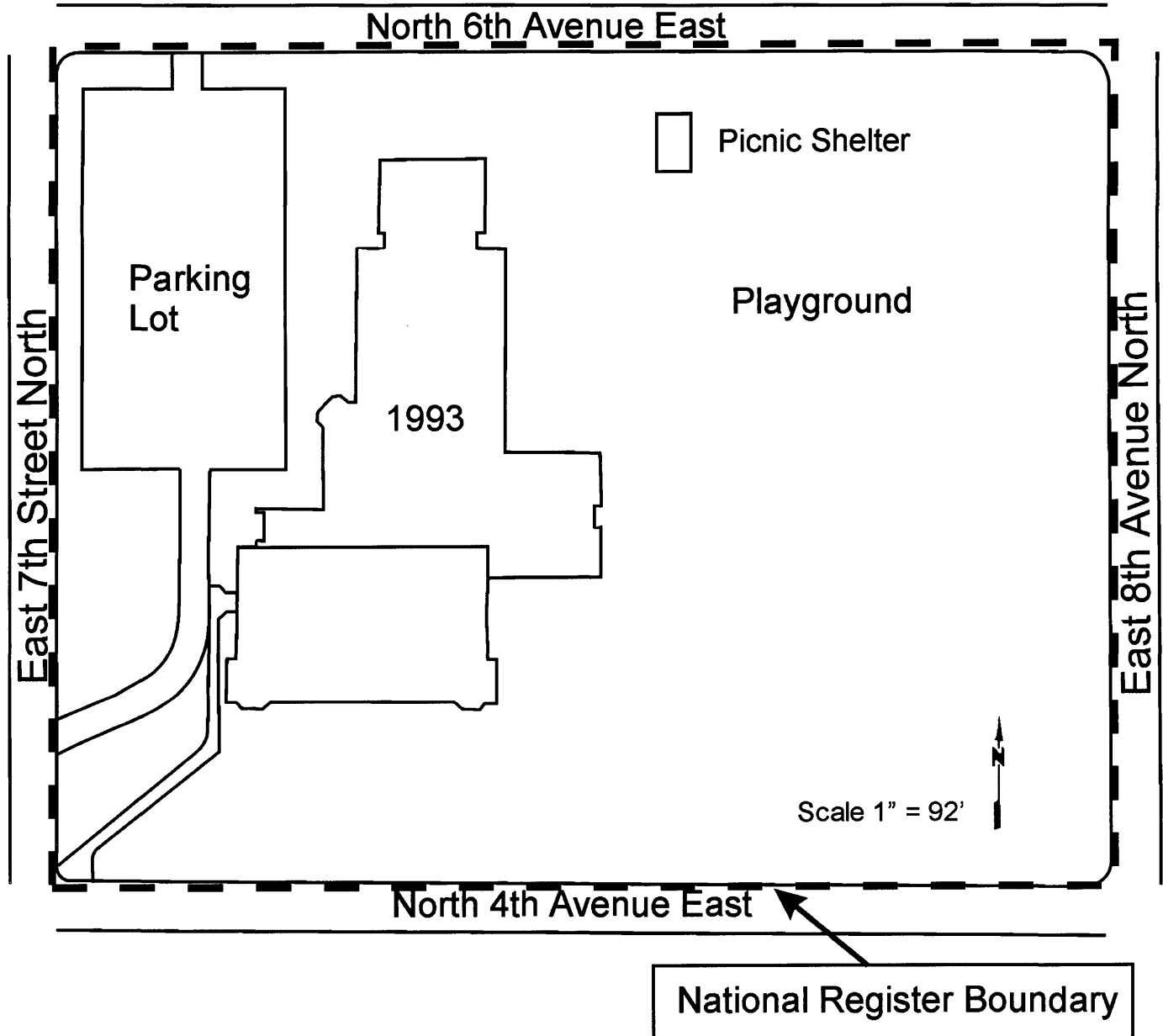
Boundary Justification

The nominated property includes the entire parcel historically associated with the school.

United States Department of the Interior
National Park Service

**NATIONAL REGISTER OF HISTORIC PLACES
CONTINUATION SHEET**

Section 10 Page 6 name of property Emerson Hough Elementary School
county, state Jasper County, Iowa



United States Department of the Interior
National Park Service

**NATIONAL REGISTER OF HISTORIC PLACES
CONTINUATION SHEET**

Section Photos Page 7 name of property Emerson Hough Elementary School
county, state Jasper County, Iowa

The following items apply to all photographs:

Property Name: Emerson Hough Elementary School
Location: Newton, Jasper County, Iowa
Photographer: Camilla R. Deiber
Date of Photographs: 2001
Location of Negatives: The State Historical Society of Iowa, Community Programs Bureau, Des Moines, Iowa

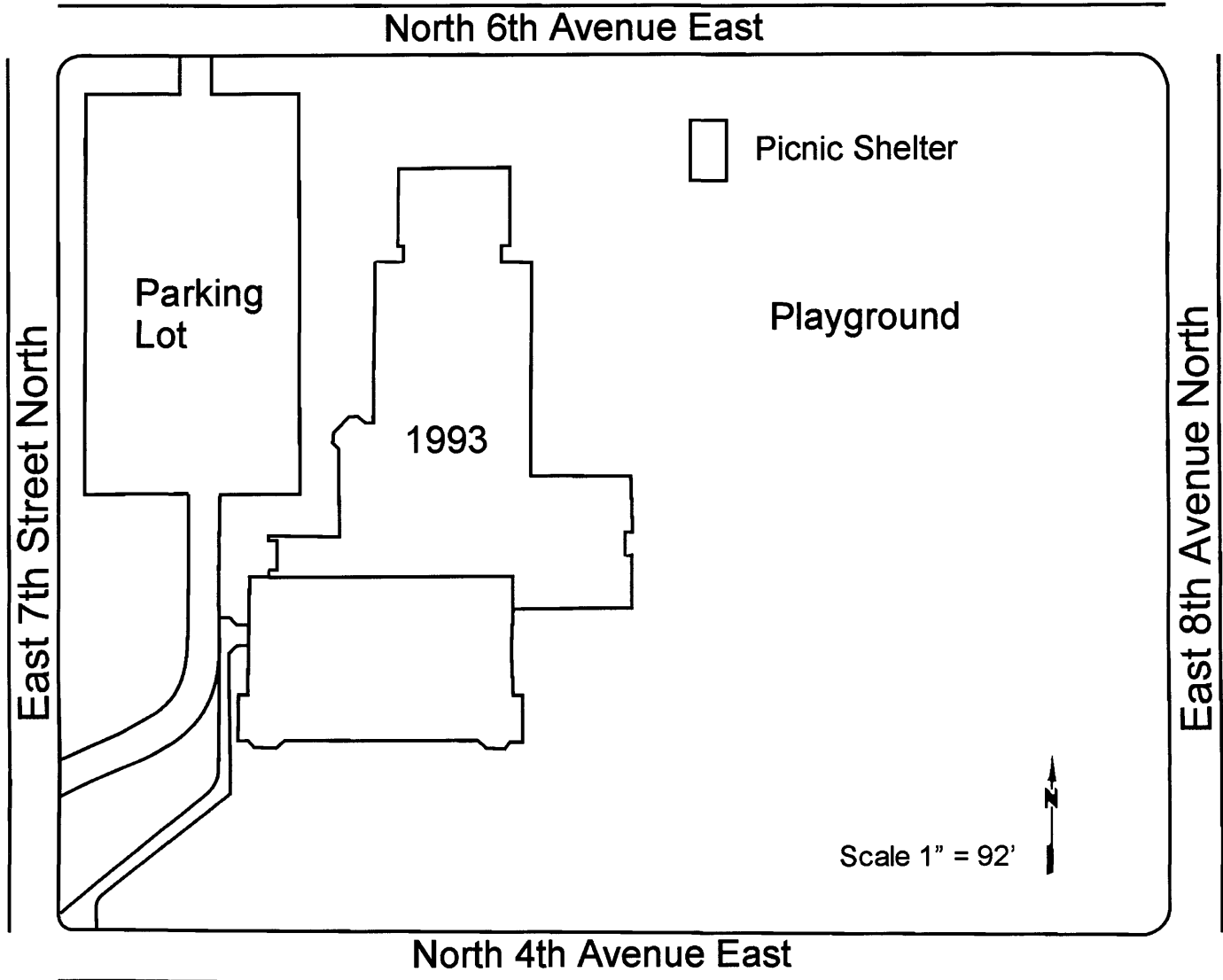
Individual Photograph Identifications:

1. Overall view, looking northwest
2. Overall view, looking northeast
3. View southwest of 1993 addition and outdoor furniture
4. Detail view north by northwest of architrave and cornice of east entrance
5. Historic photo of school, ca. 1960
6. Interior view of main hallway, looking west
7. Interior view of stairway and west entrance vestibule, looking west by southwest
8. Interior view of gymnasium, looking southeast

United States Department of the Interior
National Park Service

**NATIONAL REGISTER OF HISTORIC PLACES
CONTINUATION SHEET**

Section Floor Plans Page 8 name of property Emerson Hough Elementary School
county, state Jasper County, Iowa

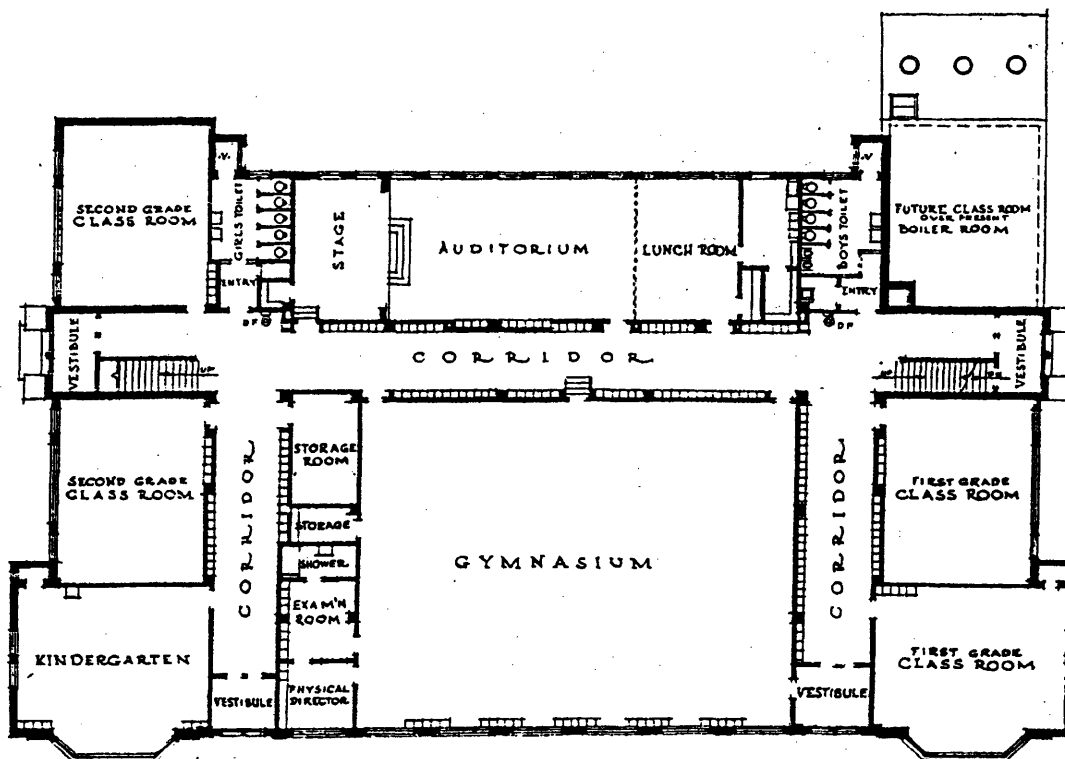


United States Department of the Interior
National Park Service

**NATIONAL REGISTER OF HISTORIC PLACES
CONTINUATION SHEET**

Section Floor Plans Page 9 name of property Emerson Hough Elementary School
county, state Jasper County, Iowa

□



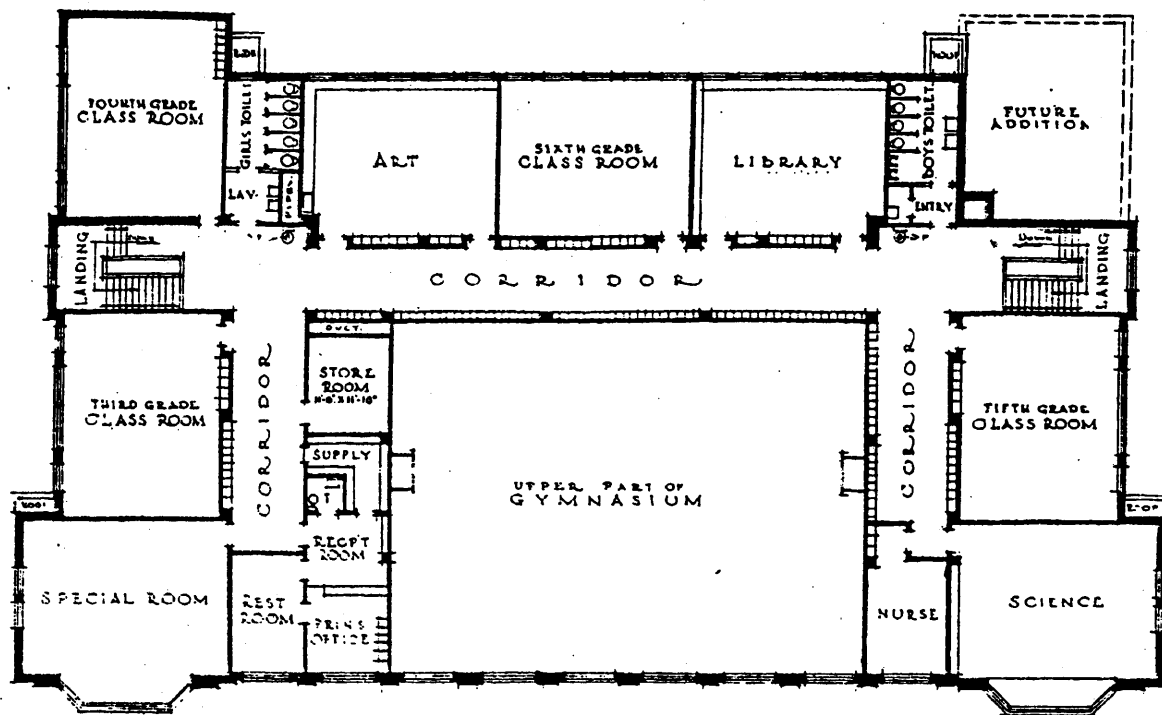
Emerson Hough Grade School, Newton, Iowa. First floor plan.

The Platoon School. Volume II, Number 1. April 1928 p. 14.

United States Department of the Interior
National Park Service

**NATIONAL REGISTER OF HISTORIC PLACES
CONTINUATION SHEET**

Section Floor Plans Page 10 name of property Emerson Hough Elementary School
county, state Jasper County, Iowa

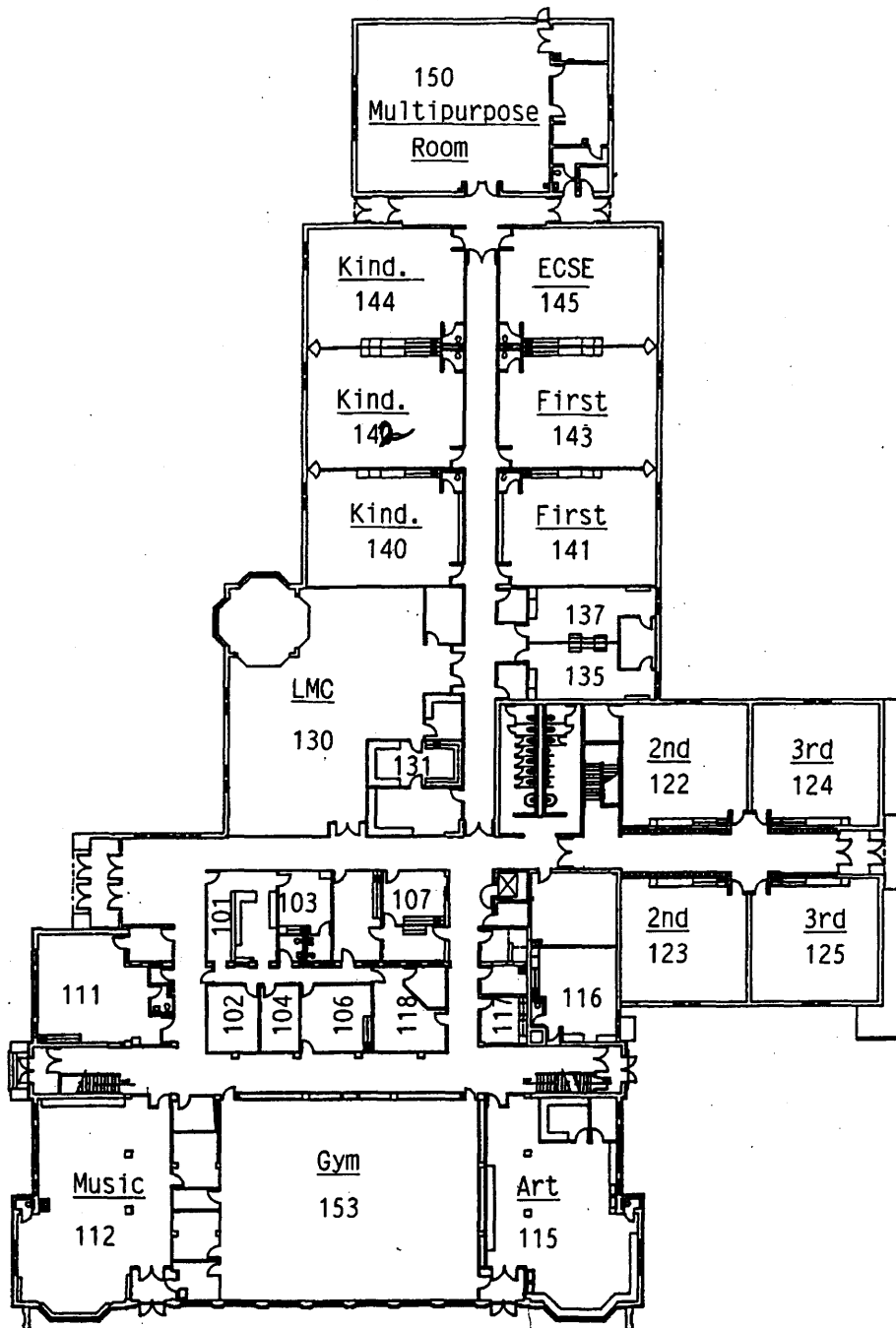


Emerson Hough Grade School, Newton, Iowa. Second floor plan.

United States Department of the Interior
National Park Service

**NATIONAL REGISTER OF HISTORIC PLACES
CONTINUATION SHEET**

Section Floor Plans Page 11 name of property Emerson Hough Elementary School
county, state Jasper County, Iowa



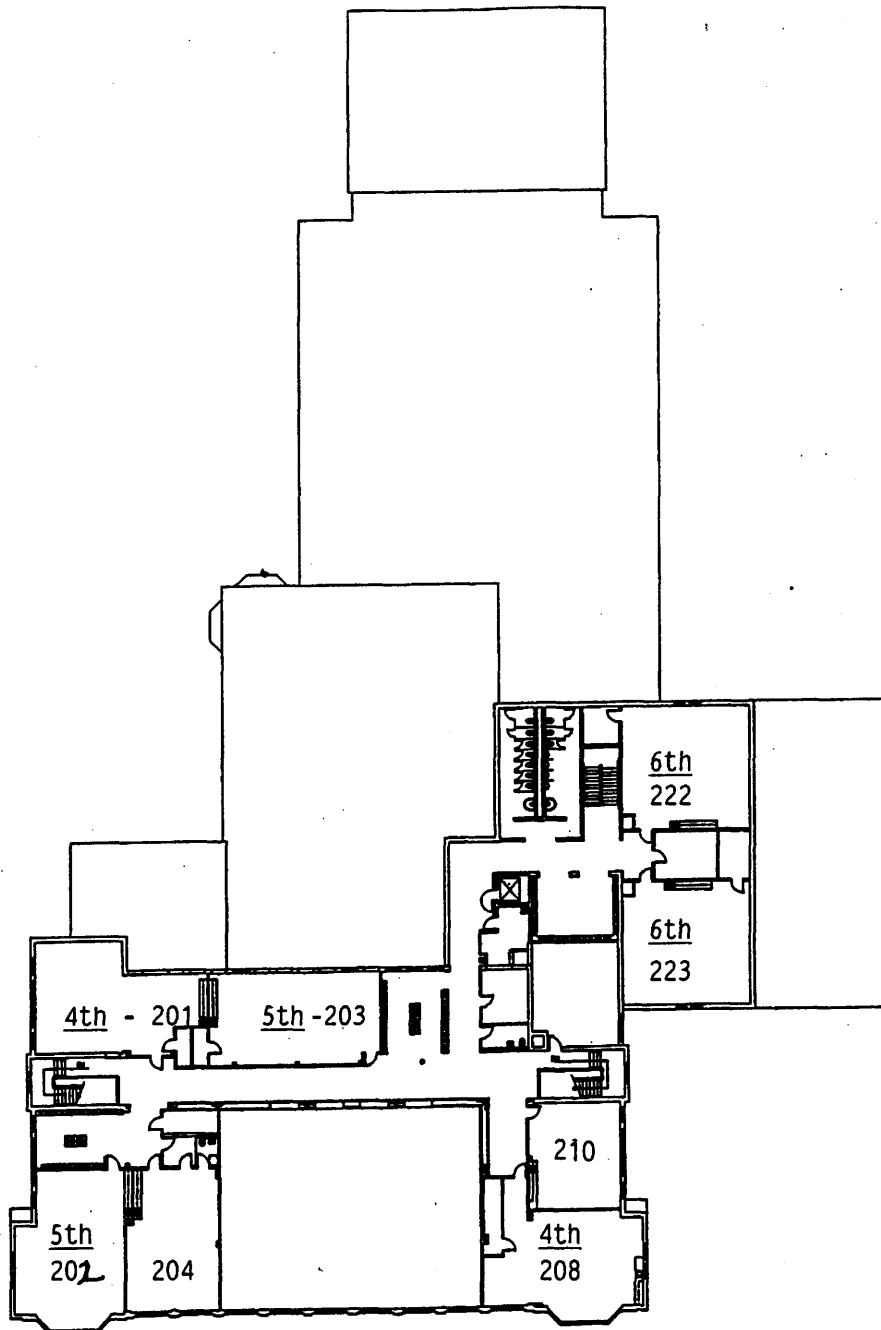
FIRST FLOOR PLAN

General Floorplan. Main Office, Emerson Hough Elementary School. Newton, Iowa. December 2001.

United States Department of the Interior
National Park Service

**NATIONAL REGISTER OF HISTORIC PLACES
CONTINUATION SHEET**

Section Floor Plans Page 12 name of property Emerson Hough Elementary School
county, state Jasper County, Iowa



SECOND FLOOR PLAN

General Floorplan. Main Office, Emerson Hough Elementary School. Newton, Iowa. December 2001.