



CHARLES AND GRACE PARKER HOUSE  
MINNEAPOLIS, HENNEPIN COUNTY, MINNESOTA  
011059 #36

CHARLES AND GRACE PARKER HOUSE  
MINNEAPOLIS, MINNESOTA

CHARLENE K. ROISE

DECEMBER 1991

A.V. DEPT. - MINNESOTA HISTORICAL SOCIETY  
690 CEDAR ST., ST. PAUL, MN 55101

FACING EAST

- WEST (FRONT) ELEVATION

011059 #36  
E





CHARLES AND GRACE PARKER HOUSE  
MINNEAPOLIS, HENNEPIN COUNTY, MINNESOTA  
011059 #23

CHARLES AND GRACE PARKER HOUSE

MINNEAPOLIS, MINNESOTA

011059 #23

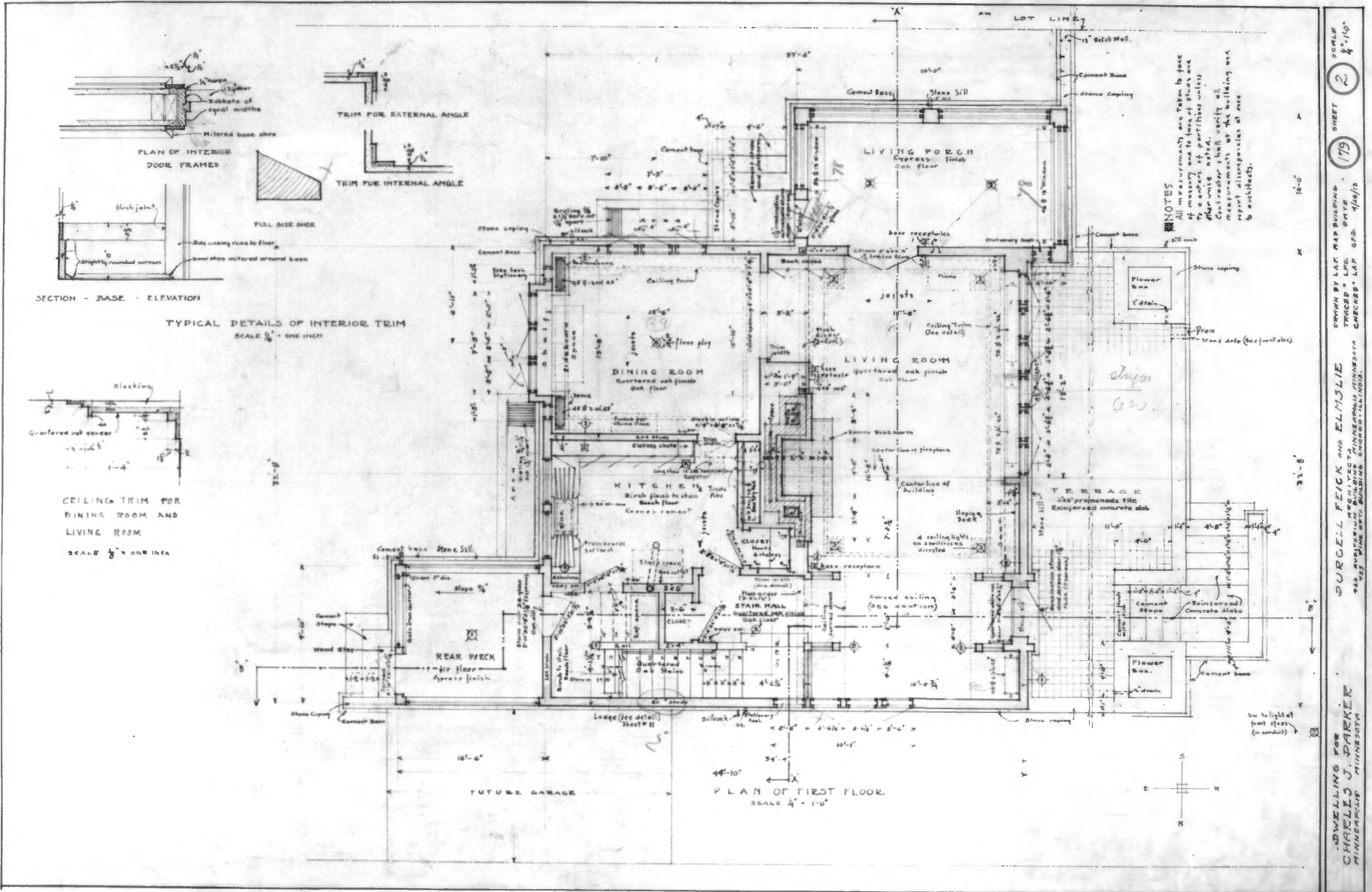
CHARLENE K. ROISE

DECEMBER 1991

A.V. DEPT. - MINNESOTA HISTORICAL SOCIETY  
690 CEDAR ST., ST. PAUL, MN 55101

PACING  
NORTH WEST

EAST (REAR) AND SOUTH ELEVATION



DRWING BY LAR. PAR BUILDING TRACED & L.P.C. SITE 1919 SHEET 2  
 DURCELL FEICK AND ELMOLIE ARCHITECTS 4/18/19  
 CHARLES J. PARKER MINNEAPOLIS MINNESOTA

CHARLES AND GRACE PARKER HOUSE  
 MINNEAPOLIS, HENNEPIN COUNTY, MINNESOTA  
 NO PHOTO I.D. NUMBER

CHARLES AND GRACE PARKER HOUSE  
MINNEAPOLIS, MINNESOTA  
NORTHWEST ARCHITECTURAL ARCHIVES

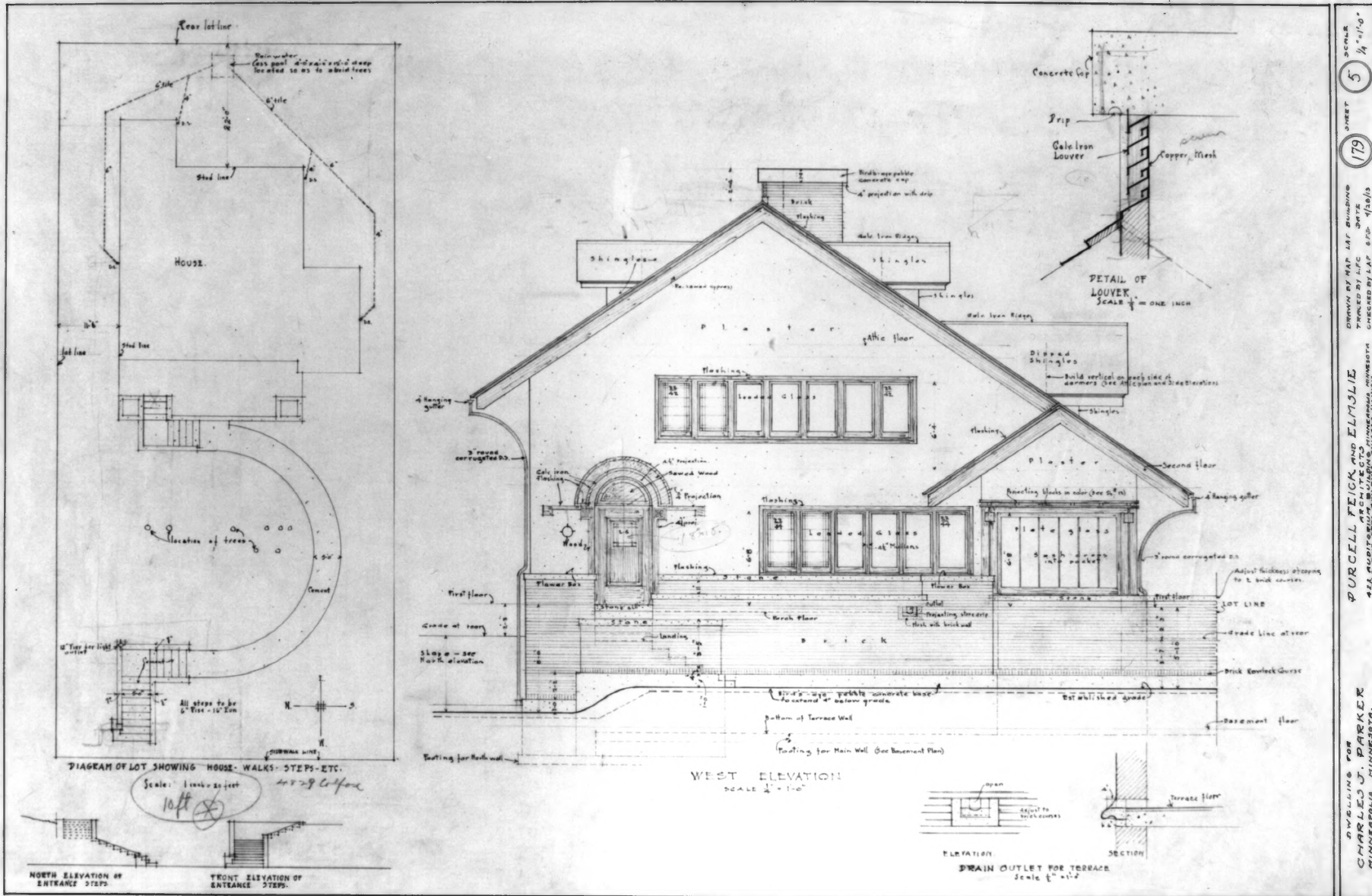
DECEMBER 1991

NORTHWEST ARCHITECTURAL ARCHIVES,  
UNIVERSITY OF MINNESOTA, MINNEAPOLIS

PLAN OF FIRST FLOOR, ORIGINAL LINEN DRAWING  
PURCELL, FEICK AND ELMSLIE, 28 APRIL 1913

NO PHOTO I.D. NUMBER





SCALE 5/8" = 1'-0"  
 SHEET 179  
 DRAWN BY MAP, LAF. BUILDING  
 CHECKED BY LAF. WHITE  
 PURCELL PEICK AND  
 CHARLES J. PARKER  
 MINNEAPOLIS, MINNESOTA.  
 425 WEST SEBASTIAN ST. MINNEAPOLIS, MINNESOTA.  
 CHECKED BY LAF. B.F.D. 4/24/13

**CHARLES AND GRACE PARKER HOUSE**  
**MINNEAPOLIS, HENNEPIN COUNTY, MINNESOTA**  
**NO PHOTO ID. NUMBER**

CHARLES AND GRACE PARKER HOUSE  
MINNEAPOLIS, MINNESOTA

NORTHWEST ARCHITECTURAL ARCHIVES  
DECEMBER 1991

NORTHWEST ARCHITECTURAL ARCHIVES, UNIVERSITY  
OF MINNESOTA, MINNEAPOLIS

WEST ELEVATION, ORIGINAL LINEN DRAWING -  
PURCELL, FEICK AND ELMSLIE, 28 APRIL 1913

NO PHOTO I.D. NUMBER





CHARLES AND GRACE PARKER HOUSE  
MINNEAPOLIS, HENNEPIN COUNTY, MINNESOTA  
011059 #17

CHARLES AND GRACE PARKER HOUSE

011059 #17

MINNEAPOLIS, MINNESOTA

CHARLENE K. ROISE

DECEMBER 1991

A.V. DEPT. - MINNESOTA HISTORICAL SOCIETY

690 CEDAR ST., ST. PAUL, MN 55101

FACING EAST

FRONT DOOR



CHARLES AND GRACE PARKER HOUSE  
MINNEAPOLIS, HENNEPIN COUNTY, MINNESOTA  
010337 #3



CHARLES AND GRACE PARKER HOUSE

010337#3

MINNEAPOLIS, MINNESOTA

CHARLENE K. ROISE

DECEMBER 1991

A.V. DEPT. - MINNESOTA HISTORICAL SOCIETY

690 CEDAR ST., ST. PAUL, MN 55101

FACING SOUTHWEST

SUN PORCH DOOR AND LIVING ROOM BOOKCASE



CHARLES AND GRACE PARKER HOUSE  
MINNEAPOLIS, HENNEPIN COUNTY, MINNESOTA  
010337 #8

CHARLES AND GRACE PARKER HOUSE  
MINNEAPOLIS, MINNESOTA

010337 #8

CHARLENE K. ROISE

DECEMBER 1991

A.V. DEPT. - MINNESOTA HISTORICAL SOCIETY

690 CEDAR ST., ST. PAUL, MN 55101

FACING NORTH

LIVING ROOM AND ENTRY HALLWAY