



Rock County Courthouse and Jail
Luverne, Minnesota
Charles W. Nelson
1976

DEC 6 1976

Minnesota Historical Society, 690
Cedar Street, St. Paul, Minn.
Perspective view from Southwest
8/01666

01666
8

Photo 1 of 7⁰⁰ APR 18 1977

PROPERTY OF THE NATIONAL REGISTER

FROM THE COLLECTIONS OF THE
MINNESOTA HISTORICAL SOCIETY
THIS PHOTOGRAPH IS FOR REFERENCE USE
ONLY. IT MAY NOT BE REPRODUCED OR
SOLD WITHOUT WRITTEN PERMISSION.



Rock County Courthouse
Luverne, Minnesota
Charles W. Nelson
1976

DEC 6 1976

Minnesota Historical Society, 690
Cedar Street, St. Paul Minn.
Detail of tower of Southwest Corner
9/01666

00E APR 18 1977

photo 2 of 7

PROPERTY OF THE NATIONAL REGISTER

01666
9

FROM THE COLLECTIONS OF THE
MINNESOTA HISTORICAL SOCIETY
THIS PHOTOGRAPH IS FOR REFERENCE USE
ONLY. IT MAY NOT BE REPRODUCED OR
DISTRIBUTED WITHOUT WRITTEN PERMISSION.
SOLD WITHOUT WRITTEN PERMISSION.



01666
4

Rock County Courthouse and Jail
Luverne, Minnesota
Charles W. Nelson
1976
DEC 6 1976
Minnesota Historical Society, 690
Cedar Street, St. Paul, Minn.
Perspective view of rear facades from
Northwest
4/01666 O & E APR 18 1977

Photo 3 of 7

PROPERTY OF THE NATIONAL REGISTER

FROM THE COLLECTIONS OF THE
MINNESOTA HISTORICAL SOCIETY
THIS PHOTOGRAPH IS FOR REFERENCE USE
ONLY. IT MAY NOT BE REPRODUCED OR
SOLD WITHOUT WRITTEN PERMISSION.



Rock County Courthouse

Luverne, Minnesota

Charles W. Nelson

1976

DEC 6 1976

Minnesota Historical Society, 690

Cedar Street, St. Paul, Minn.

Perspective view from Southeast

7/01666

00E APR 18 1977

Photo 4 of 7

PROPERTY OF THE NATIONAL REGISTER

01666
7

FROM THE COLLECTIONS OF THE
MINNESOTA HISTORICAL SOCIETY
THIS PHOTOGRAPH IS FOR REFERENCE USE
ONLY. IT MAY NOT BE REPRODUCED OR
SOLD WITHOUT WRITTEN PERMISSION.



COURT HOUSE TUXEDO MINN. 1917

Rock County Courthouse
Luverne, Minnesota
Minnesota Historical Society
ca. 1915
Minnesota Historical Society, 690
Cedar Street, St. Paul, Minn.
South and West sides
22209

22209

DJE APR 18 1977

Photo 5 of 7

PROPERTY OF THE NATIONAL REGISTER

FROM THE COLLECTIONS OF THE
MINNESOTA HISTORICAL SOCIETY
THIS PHOTOGRAPH IS FOR REFERENCE USE
ONLY. IT MAY NOT BE REPRODUCED OR
SOLD WITHOUT WRITTEN PERMISSION.



Rock County Jail
Luverne, Minnesota
Charles W. Nelson
1976

DEC 6 1976

Minnesota Historical Society, 690
Cedar Street, St. Paul, Minn.
Perspective view of jail from
Southwest

6/01666 *DOE* APR 18 1977

01666
6

Photo 6 of 7

PROPERTY OF THE NATIONAL REGISTER

FROM THE COLLECTIONS OF THE
MINNESOTA HISTORICAL SOCIETY
THIS PHOTOGRAPH IS FOR REFERENCE USE
ONLY. IT MAY NOT BE REPRODUCED OR
SOLD WITHOUT WRITTEN PERMISSION.



Rock County Courthouse

Luverne, Minnesota

Charles W. Nelson

1976

DEC 6 1976

Minnesota Historical Society, 690

Cedar Street, St. Paul, Minn.

Interior; second floor courtroom

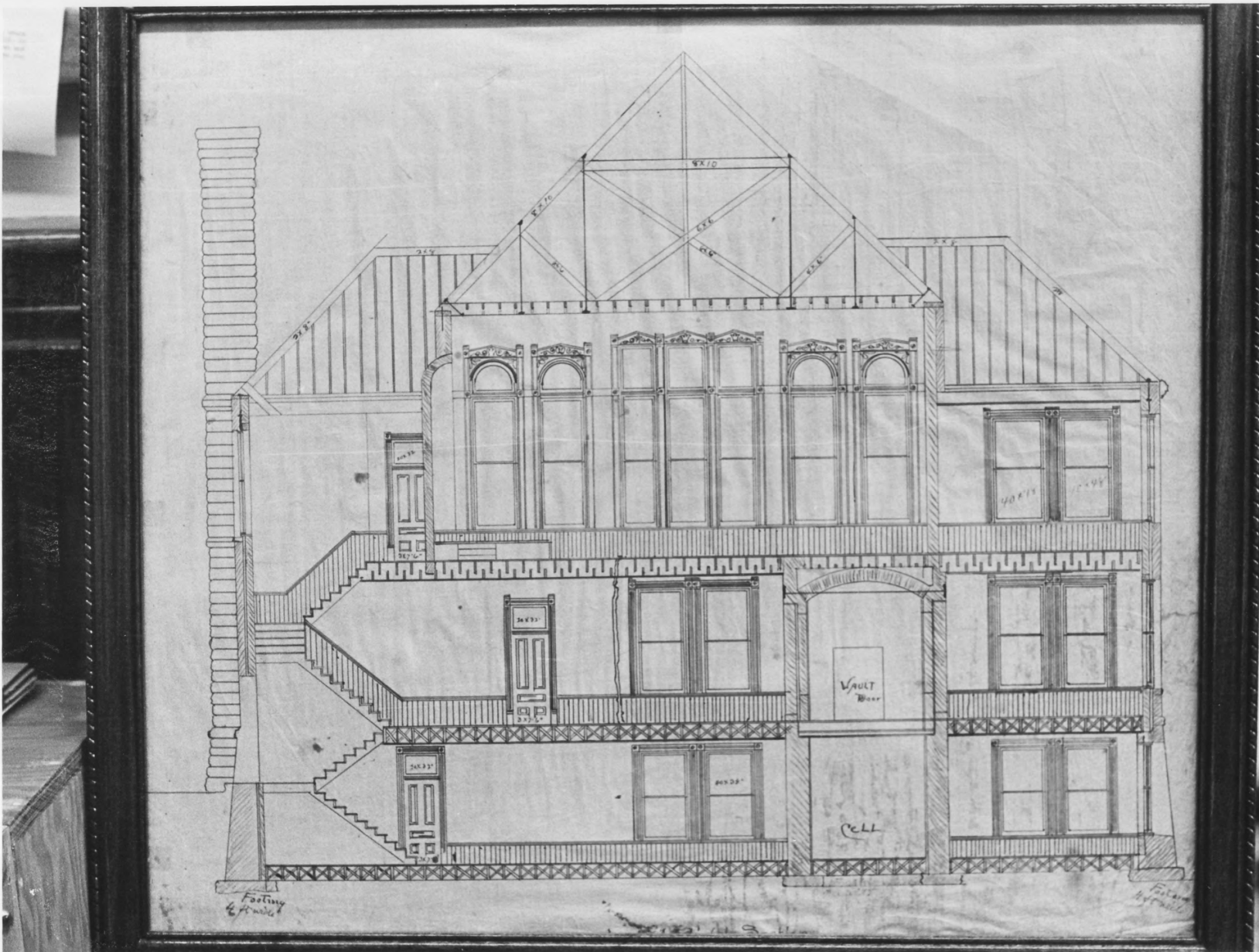
12/01666

DOE APR 18 1977

Photo 7 of 7

PROPERTY OF THE NATIONAL REGISTER

FROM THE COLLECTIONS OF THE
MINNESOTA HISTORICAL SOCIETY
THIS PHOTOGRAPH IS FOR REFERENCE USE
ONLY. IT MAY NOT BE REPRODUCED OR
SOLD WITHOUT WRITTEN PERMISSION.



Rock County Courthouse

Luverne, Minnesota

Charles W. Nelson

1976

DEC 6 1976

Minnesota Historical Society, 690

Cedar Street, St. Paul, Minn.

Architect's drawing (1887) sec-

tion through building

18/01666

00E APR 18 1977

Drawing 1 of 3

PROPERTY OF THE NATIONAL REGISTER

FROM THE COLLECTIONS OF THE
MINNESOTA HISTORICAL SOCIETY
THIS PHOTOGRAPH IS FOR REFERENCE USE
ONLY. IT MAY NOT BE REPRODUCED OR
SOLD WITHOUT WRITTEN PERMISSION.

Small security considerations on the
 and out 18 inches from the top to
 to be set after January 1, 1938. The
 to be set after January 1, 1938.

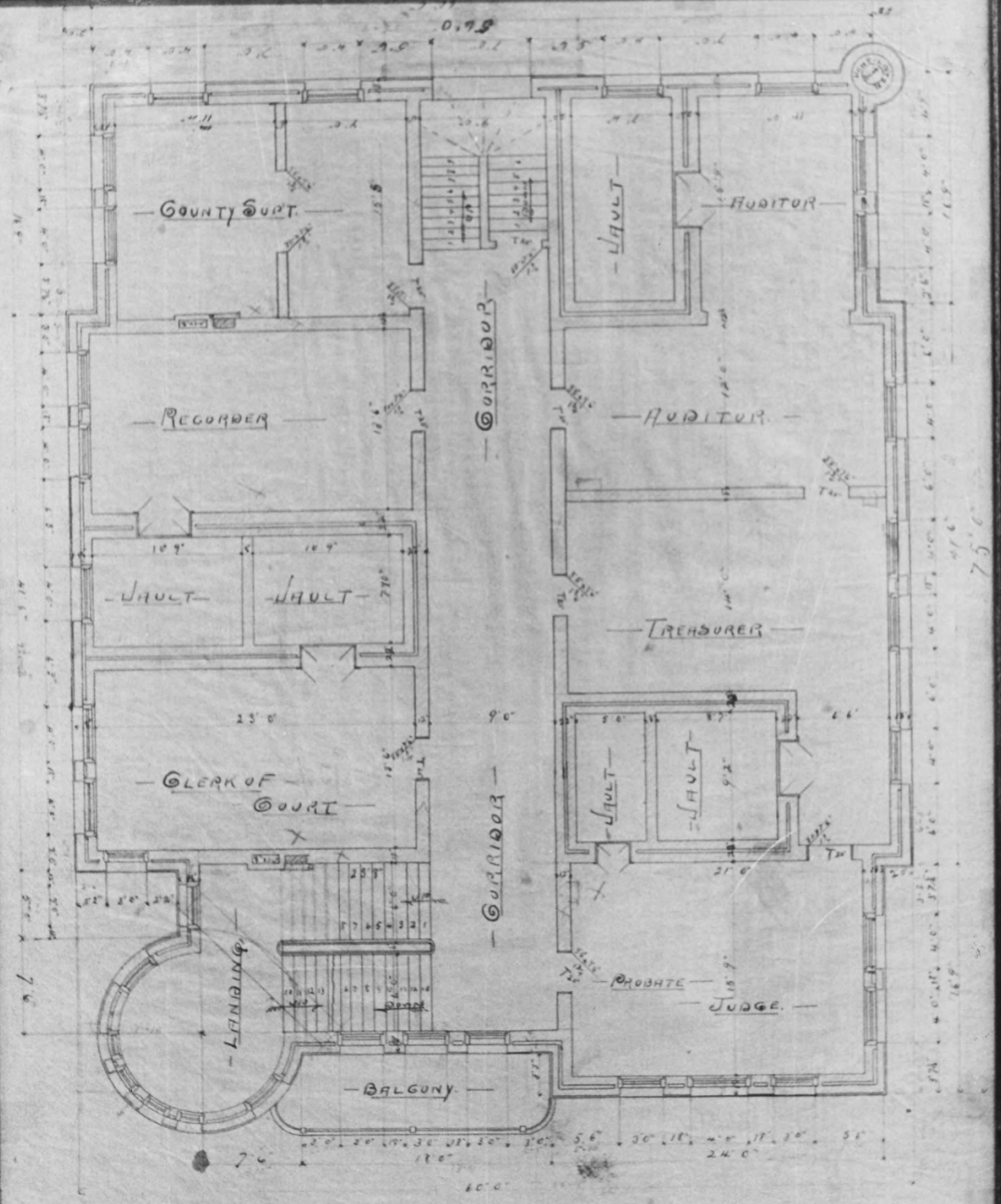
Under the contract design in this
 building project 1936, it is to be
 the first project report in 1936.
 The project being made in the
 of security considerations on the
 in 1937, 1938, for the project and
 1939.

RECOMMENDATIONS
 1. The building should be
 2. The building should be
 3. The building should be
 4. The building should be

These buildings are to be built in a
 1. The building should be
 2. The building should be
 3. The building should be
 4. The building should be

Small security considerations on the
 and out 18 inches from the top to
 to be set after January 1, 1938. The
 to be set after January 1, 1938.

Small security considerations on the
 and out 18 inches from the top to
 to be set after January 1, 1938. The
 to be set after January 1, 1938.



- PLAN of FIRST FLOOR -
 - ROCK CO. COURTHOUSE -
 - LAVERNE MINN. -

Rock County Courthouse
Luverne, Minnesota

Charles W. Nelson
1976

DEC 6 1976

Minnesota Historical Society, 690

Cedar Street, St. Paul, Minn.

Architect's drawing (1887) first

floor plan

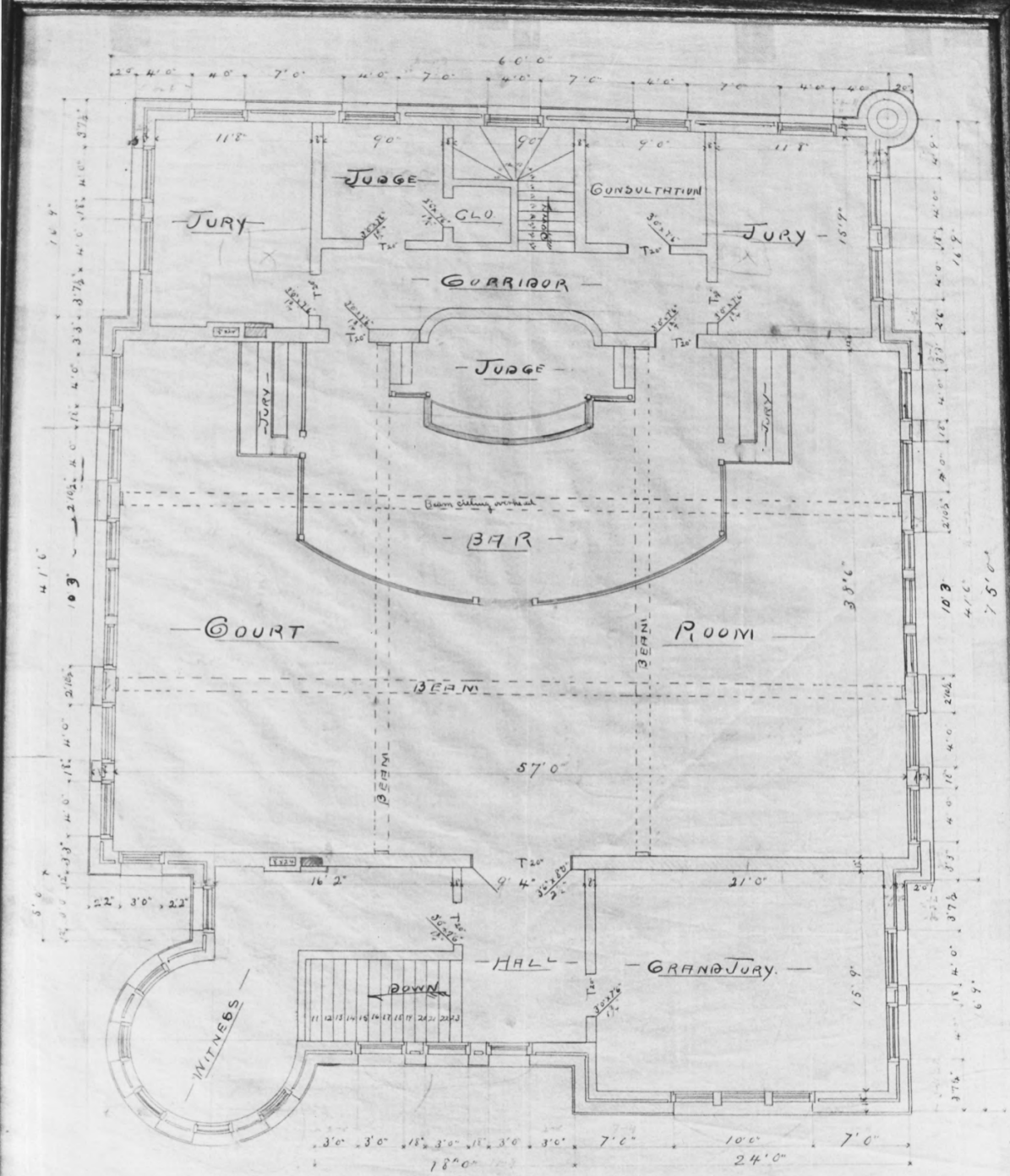
16/01666

DOE APR 18 1977

Drawing 2 of 3

PROPERTY OF THE NATIONAL REGISTER

FROM THE COLLECTIONS OF THE
MINNESOTA HISTORICAL SOCIETY
THIS PHOTOGRAPH IS FOR REFERENCE USE
ONLY. IT MAY NOT BE REPRODUCED OR
SOLD WITHOUT WRITTEN PERMISSION.



— PLAN OF SECOND FLOOR —
 — ROCK CO. COURTHOUSE —
 — LAVERNE MINN. —

01666
15

Rock County Courthouse
Luverne, Minnesota
Charles W. Nelson
1976 DEC 6 1976
Minnesota Historical Society, 690
Cedar Street, St. Paul, Minn.
Architect's drawing (1887) second
floor plan 15/01666
APR 18 1977

Drawing 3 of 3

FROM THE COLLECTIONS OF THE
MINNESOTA HISTORICAL SOCIETY
THIS PHOTOGRAPH IS FOR REFERENCE USE
ONLY. IT MAY NOT BE REPRODUCED OR
SOLD WITHOUT WRITTEN PERMISSION.

PROPERTY OF THE NATIONAL REGISTER