

MAIN STREET WESTON ID.

27

Weston Commercial Historic District
East Main Street
Weston, Umatilla County, Oregon

1 of 29

Historic view, ca. 1915-1920
Looking west along Main Street.
Fountain marks center of intersection
of Main and Franklin Streets.

Farmer's Bank of Weston Building at the
SW corner of the intersection is
distinguished by its high parapet and
pedimented crest. Opposite it, on the
east side of Franklin Street (near
right) stood the Marshall House, Weston's
finest hostelry. The Marshall House
no longer stands.
Weston Public Library Photograph
Weston, OR 97886



No 14 BUSINESS BLOCK WESTON ORE.

30
Weston Commercial Historic District
East Main Street
Weston, Umatilla County, Oregon

2 of 29

Historic view, c. 1915

Looking West along Main Street

Fountain marks center of intersection
of Main and Franklin Streets.

Farmer's Bank of Weston Building at the
SW corner of the intersection is
distinguished by its high parapet and
pedimented crest. Opposite it, on the
east side of Franklin Street (near

right) stood the Marshall House,
Weston's finest hostelry. The Marshall
House no longer stands.

Oregon Historical Society Neg. #18949
1230 SW Park Avenue
Portland, OR 97205



23
Weston Commercial Historic District
East Main Street
Weston, Umatilla County, Oregon

3 of 29

Looking west on Main Street from Broad Street, the easterly limit of the district Memorial Hall is on the near right.

Cement block post office building and

hardware store stands on site of the Marshall House. The Farmer's Bank of Weston, is still the most imposing building in the district despite its loss of cornice and crest.

City of Weston photo, 1982
Weston, OR 97886



Weston Commercial Historic District
East Main Street
Weston, Umatilla County, Oregon

4 of 29

Historic view, ca. 1915

Looking east on Main Street from Water Street. Fountain marks the intersection of Main and Franklin Streets. Farmer's

Bank of Weston Building dominates the scene.

Weston Public Library photograph
Weston, OR 97886



1012 MAIN STREET WESTON ORE.

28

Weston Commercial Historic District
East Main Street
Weston, Umatilla County, Oregon

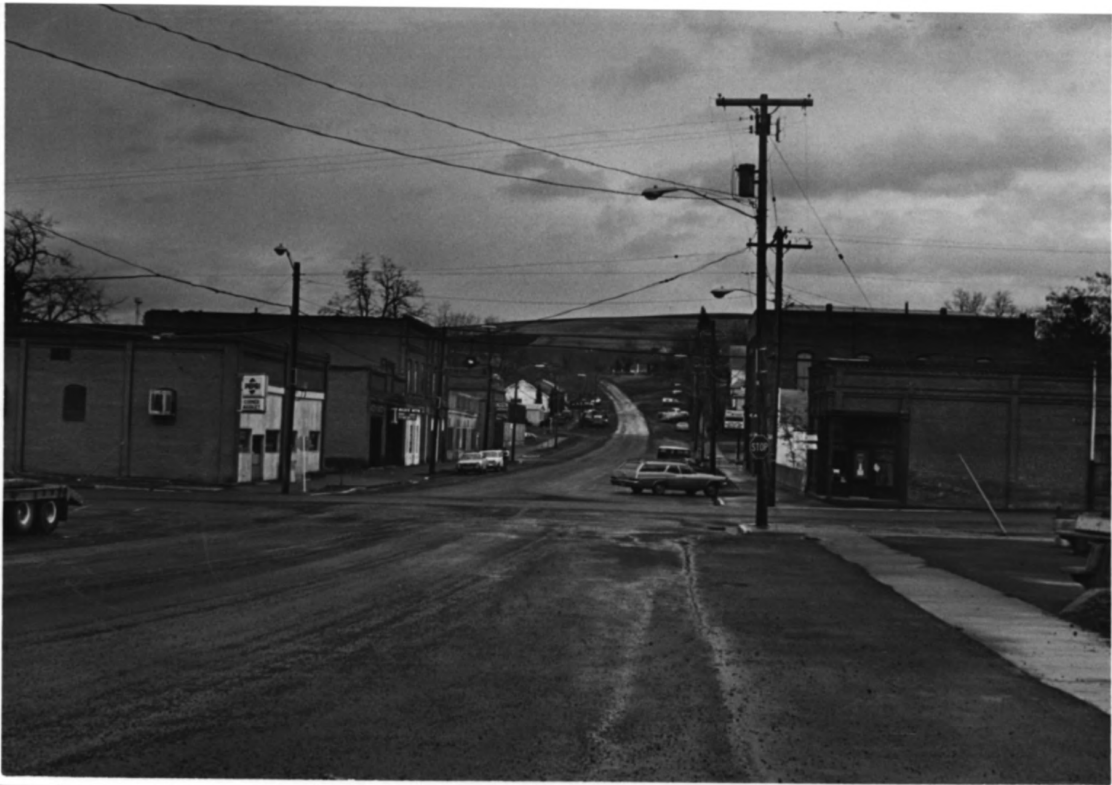
5 of 29

Historic view, ca. 1915-1920

Looking east on Main Street from Water
Street. Note wood frame building on
left with "boom town" or false front,

the simplest expression of the
Italianate Style. The building still
stands and is operated as the D and F
Cafe.

Weston Public Library Photograph
Weston, OR 97886



22

Weston Commercial Historic District
East Main Street
Weston, Umatilla County, Oregon

6 of 29

Looking east on Main Street from Water
Street, the westerly limit of the
district.

City of Weston photo, 1982
Weston, OR 97886



Jarman's

24

Weston Commercial Historic District
East Main Street
Weston, Umatilla County, Oregon

7 of 29

Historic view, ca. 1915-1920
Main Street facade of Jarman's Department
Store (Inventory #1) at NW corner of
Main and Water Streets. Note storefronts

with colored glass border lights around
central panels. Note also deciduous
street trees.

Weston Public Library Photograph
Weston, OR 97886



DIET
PEPSI
CORNER
MARKET

Weston Commercial Historic District
East Main Street
Weston, Umatilla County, Oregon

8 of 29

Corner Market Building (Inventory #1)
formerly Jarman's Department Store,
south (front) and east elevations,
showing remodeled shop fronts.

City of Weston photo, 1982
Weston, OR 97886



2

Weston Commercial Historic District
East Main Street
Weston, Umatilla County, Oregon

9 of 29

Corner Market Building (Inventory #1),
formerly Jarman's Department Store,
west and south (front) elevations,
showing brick exterior walls intact,
shop fronts remodeled.

City of Weston photo, 1982
Weston, OR 97886



BLUE MTN.

FOOD • INN • BEER • WINE

3

Weston Commercial Historic District
East Main Street
Weston, Umatilla County, Oregon

10 of 29

Blue Mountain Tavern (Inventory #2), west
and south (front) elevations, showing
most brick exterior walls and most of
facade detailing intact, shop fronts
remodeled.

City of Weston photo, 1982
Weston, OR 97886



FRED. W. B. B. C.

101

101
F. W. B. C.

Weston Commercial Historic District
East Main Street
Weston, Umatilla County, Oregon

11 of 29

Reynaud Building (Inventory #3), Main Street facade, showing intact shop front with cast iron columns, wood paneled display window bulkheads, double-leaf door, six paneled door to second floor stairway, etc.

City of Weston photo, 1982
Weston, OR 97886

5



Weston Commercial Historic District
East Main Street
Weston, Umatilla County, Oregon

12 of 29

Rear and west side elevations of Blue
Mountain Tavern and Reynaud Building.
(Inventory Nos. 2 and 3)

City of Weston photo, 1982
Weston, OR 97886



6
Weston Commercial Historic District
East Main Street
Weston, Umatilla County, Oregon

13 of 29

Rear elevations of Blue Mountain Tavern,
Reynaud Building and Prutsman Building.
(Inventory Nos. 2, 3 and 4)

City of Weston photo, 1982
Weston, OR 97886



7

Weston Commercial Historic District
East Main Street
Weston, Umatilla County, Oregon

14 of 29

Prutsman Building (Inventory #4), Main Street facade, showing intact openings in three distinct segmental-arched bays of ground story front. Only the

door has been replaced, but its top and sidelights with paneled bulkheads remain. Note similarities with Inventory #10.

City of Weston photo, 1982
Weston, OR 97886



8

Weston Commercial Historic District
East Main Street
Weston, Umatilla County, Oregon

15 of 29

Smith Canning Company Building (Inventory #5), Main Street facade and east elevation. While openings in the facade have been altered, and stucco applied to the

front, this building is contemporary with the Prutsman Building, with which it shares a common wall, and others on the block. It is constructed as are the others, of brick from the local brickyard

See next photo.

City of Weston photo, 1982
Weston, OR 97886



9

Weston Commercial Historic District
East Main Street
Weston, Umatilla County, Oregon

16 of 29

Smith Canning Company Building
(Inventory #5), East and north (rear)
elevations, showing relieving arches
over openings in exterior walls typical
of rear and side elevations of brick
buildings in the district--all built by
the end of the last decade of the 19th
century.

City of Weston photo, 1982
Weston, OR 97886



Weston Commercial Historic District
East Main Street
Weston, Umatilla County, Oregon

17 of 29

Weston Mercantile Building (Inventory #6), formerly Saling and Reese Store, west elevation and Main Street facade, showing remodeled store fronts and

the remodeled front of the east addition of 1900-1905.

City of Weston photo, 1982
Weston, OR 97886



12

Weston Commercial Historic District
East Main Street
Weston, Umatilla County, Oregon

18 of 29

Weston Memorial Hall (Inventory #7),
Main Street facade and west elevation.

City of Weston photo, 1982
Weston, OR 97886



11
Weston Commercial Historic District
East Main Street
Weston, Umatilla County, Oregon

19 of 29

Weston Memorial Hall (Inventory #7),
rear and east elevations.

City of Weston photo, 1982
Weston, OR 97886



13

Weston Commercial Historic District
East Main Street
Weston, Umatilla County, Oregon

20 of 29

U.S. Post Office and Dot Supply
Building (Inventory #8), Main Street
facade and west elevation. Building
of 1960 on site of the Marshall House,

Weston's historic hostelry.

City of Weston photo, 1982
Weston, OR 97886



14
Weston Commercial Historic District
East Main Street
Weston, Umatilla County, Oregon

21 of 29
U.S. Post Office and Dot Supply
Building (Inventory #8), rear and east
elevations.

City of Weston photo, 1982
Weston, OR 97886



Weston Commercial Historic District
East Main Street
Weston, Umatilla County, Oregon

22 of 29

Farmer's Bank of Weston Building
(Inventory #9), east elevation and
Main Street facade, showing intact
ground story front complete with

architectural cast iron. Only
galvanized sheet metal cornice and
pedimented crest which surmounted
angled bay are missing.

City of Weston photo, 1982
Weston, OR 97886



Weston Commercial Historic District
East Main Street
Weston, Umatilla County, Oregon

23 of 29

Historic view, ca. 1915-1920.

Farmer's Bank of Weston Building
(Inventory #9)

Rear and east side elevations showing

outside stairway to second story.

Wooden pony truss bridge spans Pine
Creek. Weston Public Library Photo
Weston, OR 97886



W. H. BROWN
BANKERS

W. H. BROWN
BANKERS



Weston Commercial Historic District
East Main Street
Weston, Umatilla County, Oregon

24 of 29

Farmer's Bank of Weston Building
(Inventory #9) and former post office
building (Inventory #10), Main Street
facades.

City of Weston photo, 1982
Weston, OR 97886



17

Weston Commercial Historic District
East Main Street
Weston, Umatilla County, Oregon

25 of 29

Old Post Office Building (Inventory #10)
Main Street facade and west side
elevation. Brick detailing of facade
intact. Only window and door fittings
modified. Note similarities with
Inventory #4.

City of Weston photo, 1982
Weston, OR 97886



Weston Commercial Historic District
East Main Street
Weston, Umatilla County, Oregon

26 of 29

Historic view, ca. 1915-1920
Interior of Old Post Office Bldg. (#10)
Weston Public Library Photograph
Weston, OR 97886



CAFE

CLOSED

Weston Commercial Historic District
East Main Street
Weston, Umatilla County, Oregon

27 of 29

D and F Cafe (Inventory #12), Main Street facade and west side elevation. This building, dating from ca. 1912, is a wood frame structure with

"boom town" front which was stuccoed and modified with canopy, plate glass and brick-veneered bulkheads ca. 1956. To left, set back from Main Street, the frame cottage housing the City Library is visible.

City of Weston photo, 1982
Weston, OR 97886



21
Weston Commercial Historic District
East Main Street
Weston, Umatilla County, Oregon

28 of 29

Polly's Antiques (Inventory #14), Main Street facade and west side elevation, showing remodeled shop front with beveled corner entrance and free

standing cast iron column. Originally, the Main Street facade was identical to that of the Old Post Office (Inventory #10).

City of Weston photo, 1982
Weston, OR 97886



20

Weston Commercial Historic District
East Main Street
Weston, Umatilla County, Oregon

29 of 29

Polly's Antiques (Inventory #14), east side elevation and Main Street facade. Pine Creek channel flows in a northerly direction adjacent to the east wall of the building.

City of Weston photo, 1982
Weston, OR 97886