

District Survey Form

1 <u>DISTRICT</u> GROVE STREET HISTORIC DISTRICT	<u>SURVEYOR</u> S. Crawford	<u>SHSW STAFF</u> P. Lusignan	
	<u>CITY</u> Barneveld	<u>COUNTY</u> Iowa	<u>SURVEY</u> Historic Resources of Barneveld, WI

FILM ROLLS/NEGATIVES

<u>STREETS:</u>	<u>NUMBERS:</u>	<u>STREETS:</u>	<u>NUMBERS:</u>
Grove Street	304, 308, 310,		
	312, 314, 316		

2 BOUNDARY DESCRIPTION

Lots 5, 6, & 7 Block 13 Of the original plat of Barneveld & Lots 21, 22, 23, & 24 of Assessor's plat No 1. in the city of Barneveld

All in the Vill. of Barneveld, Wisconsin.

3 BOUNDARY JUSTIFICATION

The district boundaries were drawn to include that section of Grove street that maintains the strongest sense of architectural and landscape integrity as compared to the surrounding areas of the city that were devastated or damaged by the 1984 tornado. To the n,s,e & west of the district are buildings of either newer construction or those that have significant amounts of exterior alteration disrupting the visual continuity or harmony portrayed by the buildings within the district.

4 SOURCES OF INFORMATION

A. see text.

B.

C.

D.

E.

5 MAP REFERENCE Acreage: less than one

USGS quad: Barneveld
scale: 1:24000

UTM references: H.

A. 16 263720 4766500 I.

B. J.

C. K.

D. L.

E. M.

F. N.

G. O.

6 OPINION OF NATIONAL REGISTER ELIGIBILITY

date: 1986 Jan. initials: PRL

- eligible not eligible unknown
 national state local



HISTORIC PRESERVATION DIVISION
STATE HISTORICAL SOCIETY OF
WISCONSIN

7 Description

General character, building types, styles, environment, important natural and man-made features, qualities that distinguish district from surroundings, nature of intrusions and generally excepted properties.

Period of significance: 1900-1925

GROVE STREET HISTORIC DISTRICT

Building Inventory

<u>Address</u>	<u>Common name</u>	<u>Date</u>	<u>Status</u>
304 Grove Street	Osborn House	1901	Contributing
308 N. Grove Street	Peterson House	1901	Contributing
310 N. Grove Street	Doescher House	c. 1910	Contributing
312 N. Grove Street	Manteufel House	c. 1910	Contributing
314 N. Grove Street	Carden House	c. 1910	Contributing
316 N. Grove Street	Vollen House	1925	Non-Contributing

306 N. Grove Street is vacant, land owned by 304 Grove Street.

-see attached sheets-

7 Description

General character, building types, styles, environment, important natural and man-made features, qualities that distinguish district from surroundings, nature of intrusions and generally excepted properties.

The Grove Street Historic District is comprised of six houses on the east side of Grove Street between numbers 304 - 316. All of the houses are vernacular forms, including a one-story cube, a gabled ell, two front gabled and two side gabled houses. All were built between 1901 and 1925, and display a variety of turn-of-the-century decorative embellishments including scroll-work, fancy shingle-work, and bay windows. Although each house has had additions or minor remodeling through the years, the basic integrity of architecture and landscaping is intact. An exception is 316 Grove Street, which was built in the period of significance of the district, but which has lost significant integrity due to aluminum siding, an enclosed porch, and altered windows. This small section of town recalls the pre-tornado village of Barneveld: unpretentious but tidy houses on generous lots lining a tree-filled street.

8 Significance

Areas of significance

architecture: architecture
landscape architecture

history: _____

Period of significance: 1900 - 1925

Historical development and statement of significance.

The Grove Street Historic District is significant for architectural and landscape architectural reasons. The significance of the district lies not in the architectural qualities of any individual houses, but because, of all the streets in Barneveld, this small stretch of Grove Street most clearly depicts the appearance of Barneveld before the tornado. The age, size, massing of the houses and outbuildings are typical of the former Barneveld. Of the six houses, three are nearly intact examples of the work of two local master carpenters, Eric M. Hughes, who was active at about the turn of the century, and John Lewis, who did most of his work between 1900 and 1930.

The landscape architecture significance is tied to the fact that Grove Street was one of the few areas in Barneveld that was not seriously damaged by the tornado. It best represents the early development of the community, displaying the surviving remnants of the community's historic plant fabric and the most intact row of early housing. The intact landscaping around the houses contrasts with the remainder of the village, where most of the large trees and shrubs were so severely damaged that they had to be removed. Its significance in the area of landscape architecture lies not in its particular design qualities, but simply in the fact that it typifies the mid-western small town landscape, so common elsewhere, but not so rare in Barneveld.

Historic Background

The houses in the Grove Street Historic District were constructed between 1900 and 1925. The 1915 village plat map shows that the village had a rectangular northern boundary at that time, but Grove Street extended (at least on paper) beyond the platted lots of the Simpson's and Harvey Jones Additions to the line demarking the edge of Section 9. When the demand for building lots arose sometime between 1915 and 1920, the rest of Grove Street was platted as part of Assessor's Plat Number One. The houses at numbers 304 and 308 were both built in 1901 by local carpenter Eric M. Hughes. Another local carpenter-designer, John Lewis, built the houses at 310 Grove St.

Bibliography

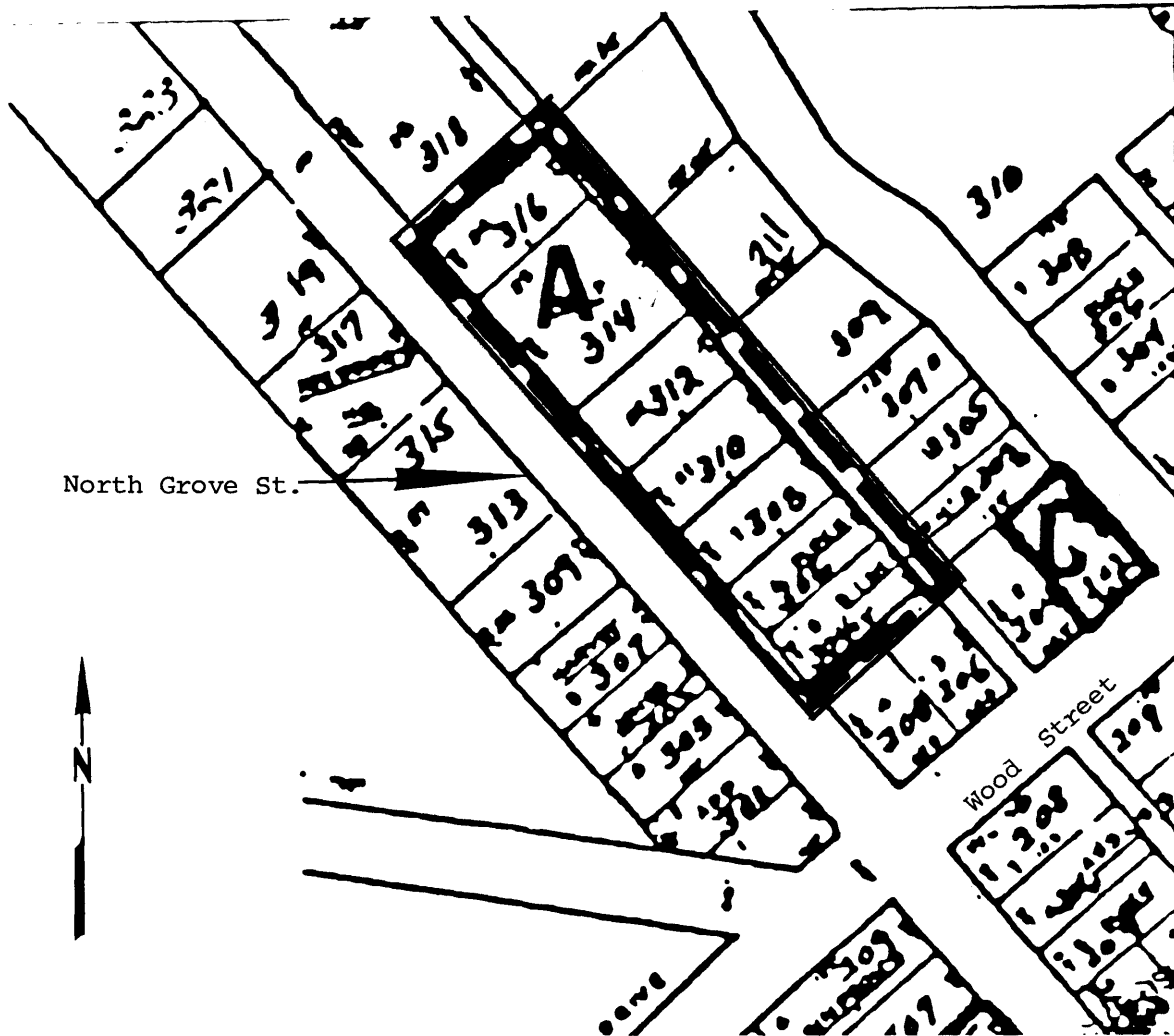
Helmenstine, John. Weehaukaja: A History of the Village of Barneveld and the Town of Brigham, Vol. II, 1977, pp. 22, 26.

Map of Barneveld in 1915 Plat of Iowa County, State Historical Society of Wisconsin.

Interviews with Mr. and Mrs. Clinton Roberts, Margarett Osborn, Mr. and Mrs. Ray Vollen, all of Barneveld; conducted by Sharon Crawford.

GROVE STREET HISTORIC DISTRICT

Barneveld, Wisconsin



North Grove St.

Wood Street

Boundary line:



not to scale

