



Picture 1. Bridge from centerline of Union Street NE, looking west-northwest.

WONDERFUL, SURELY,



Picture 2. Bridge from east bank, looking northwest.

UNION ST. RR. BLDG., SP. 2E, OREGON



Picture 3. Bridge from Marion Street Bridge (Hwy 22), looking north.

WATER ST. BRIDGE, S4
WATER ST. BRIDGE, S4



Picture 4. Bridge from west bank, looking east.

UNION ST. PER BRIDGE, S. ALEX, ALLEGAN



Picture 5. Bridge connection to trestle, looking northwest.

ANNEX ST. ROLAND, ST. ROLAND, ST. ROLAND



Picture 6. Trestle from park roadway, looking east.

ANNON STARR BRIDGE, SPACEM. REECON



Picture 7. Typical transverse view of trestle, looking northwest.

VNONSTRRBBDGEE, SALEEN, REEEN



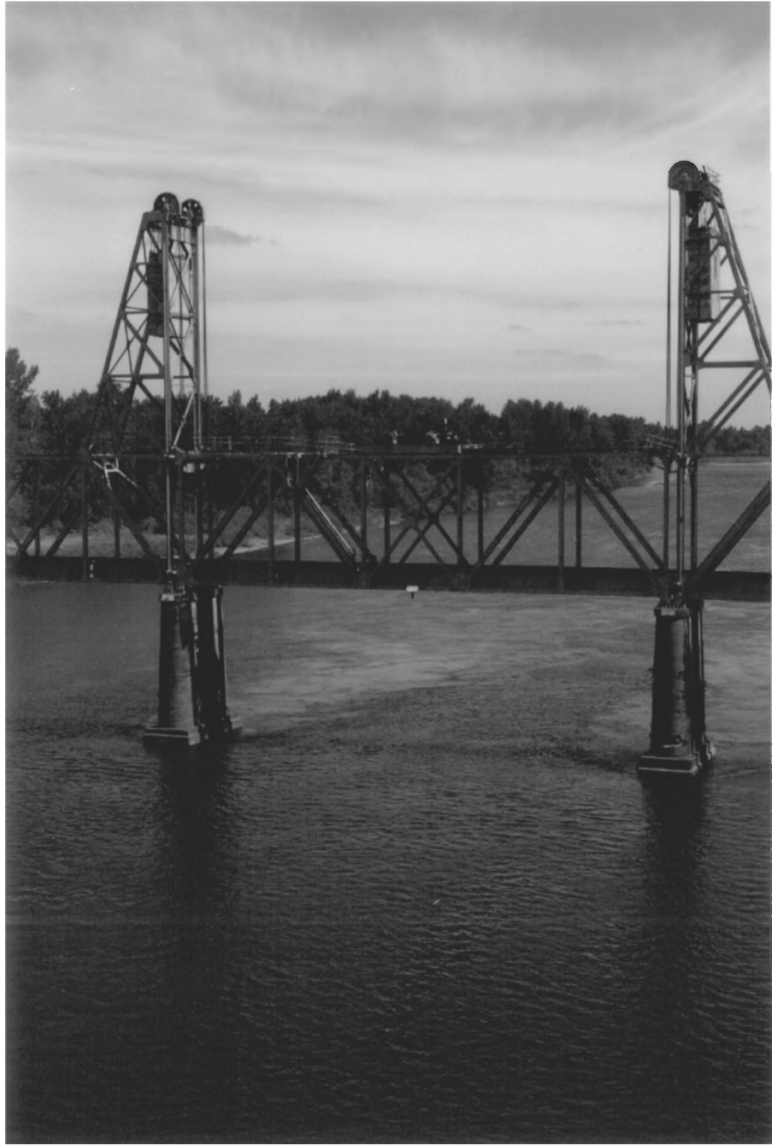
Picture 8. Trestle from park roadway, looking west.

UNION STAIR BOARDS, SPLEEN, OR DEER



Picture 9. West end of trestle at embankment, looking northwest.

UNION STR. RARE, SPACE, AREA



Picture 10. Lift span from Marion Street Bridge, looking north.

UNION STREET, SACRAMENTO, CALIF.



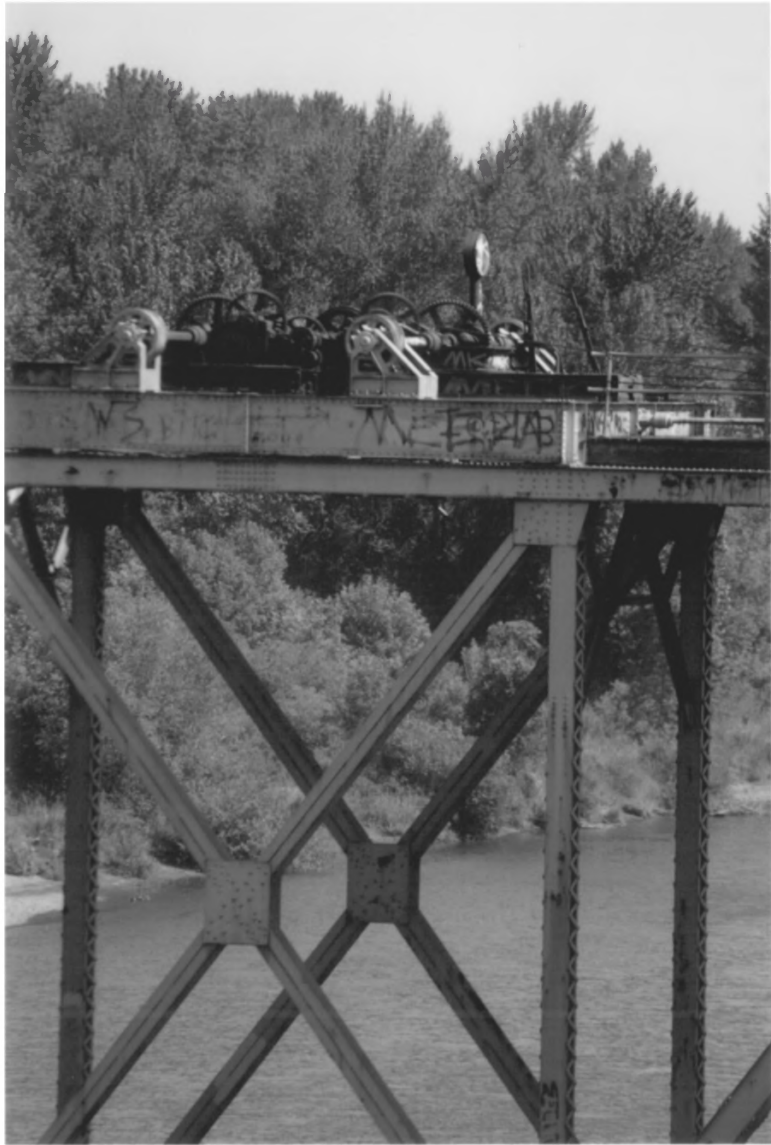
Picture 11. Eastern lift tower, looking north.

WAGNER, BRUCE, SNIDER, RECO



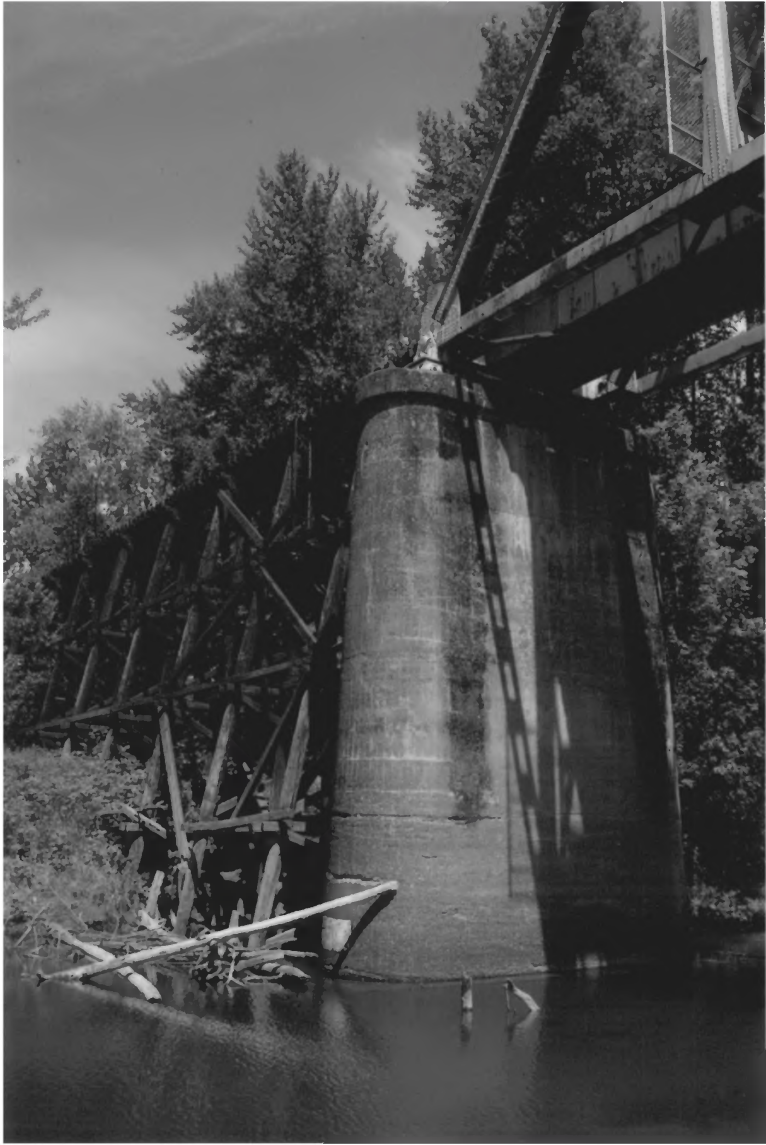
Picture 12. Western lift tower, looking north.

UNION SQUARE, SAN FRANCISCO



Picture 13. Detail of lift mechanism, looking north.

www.espe.be, espe.be



Picture 14. Pier 1, looking northwest.

UNION ST. RR BRIDGE, SALEM, OREGON



Picture 15. Pier2, looking northeast.

UNIVERSITY OF CALIFORNIA, BERKELEY



Picture 16. Pier 4, looking north.

WYOMING STATE BAR ASSOCIATION



Picture 17. Truss detail, from below.

WATER, BEER, SODA, SODA, SODA