

United States Department of the Interior  
National Park Service  
**National Register of Historic Places**  
**Registration Form**

This form is for use in nominating or requesting determination for individual properties and districts. See instructions in How to Complete the National Register of Historic Places Registration Form (National Register Bulletin 16A). Complete each item by marking "X" in the appropriate box or by entering the information requested. If an item does not apply to the property being documented, enter "N/A" for "not applicable." For functions, architectural classification, materials and areas of significance, enter only categories and subcategories from the instructions. Place additional entries and narrative items on continuation sheets (NPS Form 10-900a). Use a typewriter, word processor, or computer, to complete all items.

### 1. Name of Property

historic name Latuda, Frank, House

other names/site number 5LA.12217

## 2. Location

street & number 431 West Colorado Avenue [N/A] not for publication

city or town Trinidad [N/A] vicinity

state Colorado code CO county Las Animas code 071 zip code 81082

### 3. State/Federal Agency Certification

As the designated authority under the National Historic Preservation Act, as amended, I hereby certify that this ☒ nomination ☐ request for determination of eligibility meets the documentation standards for registering properties in the National Register of Historic Places and meets the procedural and professional requirements set forth in 36 CFR Part 60. In my opinion, the property ☒ meets ☐ does not meet the National Register criteria. I recommend that this property be considered significant ☐ nationally ☒ statewide ☐ locally. (☐ See continuation sheet for additional comments.)

Signature of certifying official/Title

Deputy State Historic Preservation Officer

Date \_\_\_\_\_

Office of Archaeology and Historic Preservation, Colorado Historical Society  
State or Federal agency and bureau

In my opinion, the property ☐ meets ☐ does not meet the National Register criteria.  
( [ ] See continuation sheet for additional comments.)

Signature of certifying official/Title

Date \_\_\_\_\_

State or Federal agency and bureau

#### 4. National Park Service Certification

I hereby certify that the property is:

- ☒ entered in the National Register  
☐ See continuation sheet.
- ☐ determined eligible for the National Register  
☐ See continuation sheet.
- ☐ determined not eligible for the National Register.
- ☐ removed from the National Register  
☐ See continuation sheet.
- ☐ other, explain  
☐ See continuation sheet.

Signature of the Keeper

Date of Action

1.27.10

Latuda, Frank, House  
Name of Property

Las Animas County, Colorado  
County/State

## 5. Classification

### Ownership of Property

(Check as many boxes as apply)

- ☒ private  
☐ public-local  
☐ public-State  
☐ public-Federal

### Category of Property

(Check only one box)

- ☒ building(s)  
☐ district  
☐ site  
☐ structure  
☐ object

### Number of Resources within Property

(Do not count previously listed resources.)

Contributing	Noncontributing	
2	1	buildings
0	0	sites
2	0	structures
0	0	objects
4	1	Total

### Name of related multiple property listing.

(Enter "N/A" if property is not part of a multiple property listing.)

N/A

### Number of contributing resources previously listed in the National Register.

0

## 6. Function or Use

### Historic Function

(Enter categories from instructions)

DOMESTIC/ Single Dwelling

### Current Functions

(Enter categories from instructions)

DOMESTIC/ Single Dwelling

## 7. Description

### Architectural Classification

(Enter categories from instructions)

LATE 19<sup>TH</sup> AND 20<sup>TH</sup> CENTURY REVIVALS:  
Mediterranean Revival

### Materials

(Enter categories from instructions)

foundation	CONCRETE
walls	BRICK
	STUCCO
roof	TILE
other	METAL

### Narrative Description

(Describe the historic and current condition of the property on one or more continuation sheets.)

**National Register of Historic Places  
Continuation Sheet****United States Department of the Interior  
National Park Service**

Latuda, Frank, House, Las Animas County, Colorado

Section number 7 Page 1**DESCRIPTION****The Property and Surrounding Area**

The Frank Latuda House anchors the northeast corner of West Colorado Avenue and Prospect Street in Trinidad, Colorado. Colorado Avenue is one of the town's few remaining grass-landscaped, center-divided thoroughfares. Some of Trinidad's most distinguished residences appear along its tree-lined length. The Frank Latuda House and garage occupy Lots 20 and 21 in Block 20 of C.P. Treat's North Side Addition.

The grounds of the Frank Latuda property, facing Colorado Avenue, exhibit the gradual westward incline of the avenue. The west side of the property reflects the more noticeable downhill grade of Prospect Street from its intersection with Colorado, north to Kansas Avenue. At the back of the house a retaining wall runs from the northwest edge of the garage, west to the north side of an ash pit. The wall has a four-foot drop to the lower backyard. Along part of its length, there is a short wire fence. An original garden loop, wire mesh fence surmounts the top of the retaining wall that runs north from the ash pit to the alley. The retaining wall located along the alley, at the northern end of the property, is four-feet, three inches tall. A four-foot chain link fence tops this part of the retaining wall extending east along the alley and then south to the shed's northeast corner. The shed is the only non-contributing building on the property and abuts the north side of the Mediterranean Revival style garage (see photo 9). The shed, constructed some years after the house, was originally a second garage.

Along the grassy area between the public sidewalks and curbing on both Colorado and Prospect, there are a number of mature deciduous trees. Only two trees are located on the property: one is a huge fir tree at the southwest corner of the property and the other is a small deciduous tree near the terrace on the west side of the house. Bushes and flowering plants are situated at various locations around the building and in the backyard.

**House 1925; (photos 1-7, 10-15, H11)**

The 1925 Frank Latuda House is a two-story hipped-roof Mediterranean Revival home constructed in a veneer of vitrified tan colored brick using a stretcher bond course over hollow clay tile. The building's rough rectangular footprint varies; it is 53 feet at its widest point by 54 feet at its longest. A soldier course extends around the building and is located a few bricks above the concrete foundation. The soldier course repeats along the base of the garden brick wall leading from the house east to the garage. The garden wall includes an open gateway giving access to the backyard, a rear door into the basement door, and the back porch of the first floor. Imperial Mission red tile, regularly laid, covers the building's complex hipped roof and the vestibule's front-gabled roof. Tile also sheathes the visor roofs (also known as false eaves) hiding the flat roofs of the one-story office, sun parlor section of the house, and the one-story garage. Tile, placed at an angle, lies along either side of the top edge of the brick garden wall with saddle tile capping the top. With a few exceptions as noted, all of the windows are multi-pane casements or multi-pane double hungs with concrete sills. All of the building's windows are original.



**National Register of Historic Places  
Continuation Sheet****United States Department of the Interior  
National Park Service**

Latuda, Frank, House, Las Animas County, Colorado

Section number 7 Page 2*South-facing façade*

The façade contains a large two-story hipped roof section flanked by two smaller one-story recessed sections. A scored concrete walk leads to five steps, anchored by brick sidewalls capped with concrete, and the centered entrance in a protruding vestibule. Heavy brackets support either side of a front-gabled red tile roof with wide overhanging eaves covering the vestibule. The front of the gable extends slightly over the entrance. Two large corbels support the front of the gabled roof. Original black wrought iron lanterns are suspended from the corbels. A soldier arch surrounds the entrance, which also contains the original 15-light wooden door behind a metal and glass security door. Cast concrete vertical rope compositions appear on either side of the front door (see photo 2). Above the door is an arched cast concrete cartouche containing a fleur-de-lys, leaves, and bracket design.

Behind the vestibule, the main section of the house contains two symmetrically placed double hung eight-over-eight windows. Below each concrete windowsill there is a cast concrete flower box and above each window there is a cast concrete floral and leaf-patterned panel (see photo 3). Fischer & Jirouch of Cleveland, Ohio, manufactured all of the cast concrete patterned panels on the house (Architect's plans, pp. 1 & 4 and "Products" website Fischer and Jirouch). Two small fixed basement windows appear directly below the main floor windows. Immediately above the vestibule is a hipped roof wall dormer accented by heavy brackets and wide overhanging eaves. Centered in the dormer is a pair of six-over-six double hung windows providing light to the south bedroom.

To the west of the main section on the façade is a one-story flat roofed section housing the sun parlor. It contains a red tile visor roof with a wide overhanging eave and heavy brackets (see photo 1). A pair of six-light casement windows each topped with a four-light fixed transom dominate the south side of the sun parlor. A cast concrete flower box with two evenly spaced diamonds emerges directly below the windowsills. On the east side of the main section of the façade is a recessed one-story flat roof section continuing the pattern of a red tile visor roof, wide overhanging eaves, and heavy brackets as featured on the sun parlor. A six-over-six double hung window punctuates the center of the south wall of what is the office.

*West-facing side*

The west side of the sun parlor has a red tile visor roof concealing the flat roof and mirroring its south side. The only deviation from the architect's plans occurs in this area. The architect's west elevation drawing on page one shows a cast concrete flower box located under the windows of the sun parlor's west side. However, on-site visual inspection of the area revealed no evidence a flower box ever existed here. The current owner, who was born in the house and has lived there all of his 83 years, does not recall a flower box ever being there. All three sides of the sun parlor have paired six-light casement windows with four-light fixed transoms above each pair, allowing the maximum amount of natural light possible into the room. Two part storm-type windows cover the casement windows from the exterior. These windows have non-movable screens located in the lower section and fixed panes in the upper portion.

Directly north of the sun parlor is a half-walled, open brick terrace with a pergola supported on the southwest, northwest, and northeast corners by concrete capped brick piers. On the east side, the wooden rafters of the pergola are secured directly to the angled bay of the building



**National Register of Historic Places  
Continuation Sheet****United States Department of the Interior  
National Park Service**

Latuda, Frank, House, Las Animas County, Colorado

Section number 7 Page 3

and a wooden beam supports the west side rafters. The supporting wooden beam is attached to a concrete-capped brick pier on the northwest corner of the sun parlor and is anchored to the top of the brick concrete-capped brick pier rising from the south side of the terrace wall. The terrace has a concrete floor. On the east side of the terrace is a three-sided, one-story canted bay with one six-over-six double hung window on either side of a pair of French doors (see photo 5). The doors open from the dining room and provide the only access onto the terrace. As indicated in the architect's drawings, the architect designed the angled bay's flat roof as a flower box. The box is tin lined and equipped with a pair of terra cotta drain spouts. Each spout is visible above the windows of the bay and the rafters of the pergola. A wall dormer breaks through the wide overhanging eaves above the pergola. A set of six-over-six double hung windows centered in the dormer provide natural light to the west side second-floor bedroom. Stucco covers the sides of the dormer.

North of the terrace along the wall of the west side of the building, a six-over-six double hung window provides light into the main floor breakfast room. On the northernmost section of the main floor a set of six-over-six double hung windows provide natural light into the kitchen, being located sit directly above the kitchen sink.

Under the kitchen and breakfast room windows, but obscured by a cluster of shrubs, are three basement windows. One small basement window has six panes and is located below the breakfast room window. Two small four-pane windows appear below the kitchen windows.

*North-facing side*

The back of the house, or north-facing side, has the most complex part of the building's hipped roof. A large hipped roof dormer projects from the entire west side of the roof, which encompasses the sleeping porch (see photos 6 and 14). The dormer has a pair of six-light casement windows on its east and west sides and four pairs of six-light casement windows on the north-facing side. These windows offer an expansive view of Simpson's Rest, a prominent bluff with an elevation of over 6400 feet on the north end of Trinidad. Stucco coats the three sides of the dormer. East of the dormer the hipped roof sweeps downward from the ridge to cover a portion of the first-floor back bedroom and bathroom. Another part of the roof slants downward along the east side of the dormer, then around and below the base of the dormer. The roof angles downward, creating a pent roof, which covers an outside entrance area leading to an enclosed back porch door on the west side.

The north-facing side has three sections; the center and east sections are each set back further. The west-facing wall of the enclosed porch has a door and a six-light window. The north-facing wall projects from the center of the building by 12 inches. This wall contains a pair of six-light casement windows providing natural light into the enclosed porch. Below the porch windows concrete steps lead to a basement door, and on its left, a six-light window. A low brick wall with a concrete cap is located on the west side of the enclosed porch. On the porch a wooden post supports a wooden crossbeam. The crossbeam supports the rafters, which in turn, support the roof.

Continuing to the east of the porch is a six-over-six double hung window providing light to the back first-floor bedroom. Below the bedroom window is a six-light fixed basement window. The

**National Register of Historic Places  
Continuation Sheet****United States Department of the Interior  
National Park Service**

Latuda, Frank, House, Las Animas County, Colorado

Section number 7 Page 4

easternmost section of the north-facing wall has a setback of approximately seven-feet, six inches from the center section. The east-facing wall of the setback contains a six-over-six double-hung window. A six-light fixed basement window is located in the eastern most section.

*East-facing side*

The east-facing side has three sections (see photo 7). A large jerkinhead hipped roof wall dormer tops the center section. The main floor of the center section has a pair of six-over-six double-hung windows for a first-floor bedroom on the north end of the center section and a small two-light hopper window in the closet. A six-light fixed basement window appears directly below the first-floor bedroom windows. To the left of the basement window is a concrete stairway continuing under the east side porch to a basement door opening into a storage room. On the north end of the dormer, directly above the first-floor bedroom windows, is a matching set of six-over-six double-hung windows illuminating a second floor bedroom. On the south end of the dormer is a six-light bathroom window.

The second section projects approximately 13 feet from the south end of the center section and is a small flat roofed one-story section with red tile visor roofs on each side with wide overhanging eaves and wide brackets. Two concrete capped brick piers extend slightly above the roofline on the southeast and northeast corners. A scored concrete walkway leads up to six concrete stairs flanked by angled concrete capped brick sidewalls and a soldier arch entrance on the north end of this section. The soldier arch continues west and creates a small porch measuring 3' 6" wide by 4' 8" in length with a concrete floor. An original 15-light wooden door, matching the one on the façade, provides access to an interior hallway. In the wall of the north-facing side of the porch is an arched opening measuring about 3' 6". To the south of the arched entrance is a six-over-six double-hung window providing natural light to an office located at the southeast corner of the building. The south-facing office wall sits back 4' 6" from the south façade. Extending approximately four feet above the southeastern portion of the hipped roof is a brick chimney serving the living room fireplace and, according to the architect's plans, is topped by a "Number Three, Clay Chimney Cap" manufactured by the W. S. Dickey Clay Manufacturing Company of Kansas City, Missouri (see photos 7, 15 & H11).

North of the center section is a small one-story section with one six-over-six double-hung first-floor bathroom window. A metal coal chute door appears below the bathroom window. The owner no longer uses the coal chute; a gas furnace replaced the coal furnace in the mid-1950s.

A ten-foot high, red tile capped brick garden wall begins at the northeast corner of the house and continues north approximately six feet. A slightly off-center arched opening with a metal gate leads to the backyard. A soldier arch tops the opening. The brick garden wall continues eastward at a height of approximately six feet and attaches to the southwest corner of the two-car garage (see photos 8 and 16). Red tile visor roofs exist along the top edge of the gateway arch, the wall to the garage and between the concrete capped brick piers of the garage (see photos 8 and 16).

**National Register of Historic Places  
Continuation Sheet****United States Department of the Interior  
National Park Service**

Latuda, Frank, House, Las Animas County, Colorado

Section number 7 Page 5**Interior**

The house interior has a complex floor plan with no alterations since its 1925 construction. Oak blankets the first level floors where builders crafted the cabinetry, doors and trim from quarter sawn oak. Since the house was constructed, wall-to-wall carpeting has covered the second-story hardwood floors. Douglas fir provides the trim to the second-story. All of the interior doors are original and most of the light fixtures date to the construction of the house. Handcrafted built-in bookcases, cabinets and dresser cabinet/drawers, designed by the architects, are still intact throughout the house.

***Basement***

Two outside entrances and one interior entrance allow access to the basement. The exterior entrances are on the north and east sides of the house. The interior entrance is from the first-floor central hallway. The design of the house did not provide for excavation under the first-floor terrace, sun parlor or office. Only a small area under the living room was excavated to provide access to clean the fireplace ash pit. A four-paneled door conceals this excavated area. Seven other rooms exist in the basement including two original storage rooms, a "cold storage room," boiler room, coal room, laundry room and a bathroom containing only a toilet. The gas-fired boiler replaced the coal-fired boiler during the 1950s. Since the conversion, the owner uses the coal room for storage. The current boiler is attached to the main brick chimney.

***First floor***

The tiled floor vestibule provides the main entry to the first floor. A 28'5" by 14' living room appears directly north of the vestibule, with the longer section running east to west. A ceramic tile faced fireplace framed on either side with quarter sawn oak book cabinets and topped with a wooden mantelshelf fills the east wall (see photo 10). Quarter sawn oak crown molding appears at the top of all of the walls and doubles as a picture rail. To the west of the living room is a sun parlor entered through an original pair of quarter sawn oak 15-light French doors with a marble threshold and quarter sawn oak door surround. The parlor's interior walls are brick, the floor is tile, and plaster coats the ceiling. The sun parlor's windows are paired six-light casements with four-light fixed transoms above each casement.

The north wall of the living room has the original pair of 15-light French doors, matching those to the sun parlor and providing access to the dining room. On the right of the room's north wall is a 15-light single door providing access to a central and an east hallway. One may enter the dining room from either the living room or the central hallway. The dining room's west wall has a canted bay with a pair of multi-paned French doors providing access to the outdoor terrace. Two six-over-six double-hung windows flank the French doors. The north wall of the dining room has a door into the breakfast room and its east wall features a door leading to the central hallway.

The breakfast room's east wall has a built-in cabinet (see photo 11). The north wall of the room has a door leading to the kitchen. On the north and south walls of the kitchen, the original floor to ceiling built-in cabinets with the original hinges and latches appear. The architects designed the cabinets in both the breakfast room and kitchen (Plans, page 4). The kitchen's north wall has a door with a four-light window topped by a three-light operable



**National Register of Historic Places  
Continuation Sheet****United States Department of the Interior  
National Park Service**

Latuda, Frank, House, Las Animas County, Colorado

Section number 7 Page 6

transom. To the right of the door is a small six-pane fixed window. The door leads to the enclosed north side porch. A pair of six-over-six double-hung windows exist above the kitchen sink (see photo 12).

The north side porch, which has a concrete floor, measures approximately seven feet square. Its west wall has a door with a four-light window and a three-light transom. To the right of the door is a three-light window. The north wall has a pair of casement windows. The east wall contains a door providing access to the north side bedroom.

A second entrance on the south wall gives access to the central hallway. As one leaves the north bedroom, into the central hallway, to the left is a short hall with a door into the first-floor bathroom. In this area of the hallway there is also a door to the basement stairway.

The first-floor master bedroom, on the east side of the house, has an entrance from the central hall. The bedroom's north wall has a door to the first-floor bathroom. A closet in the master bedroom's south wall has a small two-pane hopper window. The closet also contains two wooden cabinets designed by the architects (Plans, page 5).

At the south end of the central hallway, against an inner west wall, is a wide wooden staircase with an enclosed banister capped with quarter sawn oak. It leads to the second floor. Down the east hall is a single-panel wood door to a small office on the southeast corner of the house. East of the office door appears the third entrance to the house which opens to the east side porch.

*Second floor*

The second floor contains three bedrooms all located in the large dormers, one in the west a second in the south (see photo 13), and the third in the east. There is a bathroom south of the east bedroom, which has one six-pane window. All of the bedrooms have a paired set of six-over-six double-hung windows. At the north end of the second floor a hipped dormer encloses a sleeping porch. All of the windows in the sleeping porch are paired six-light casements (see photo 14). In a small alcove across from the stairs, a built-in laundry chute with a wooden door and original latch exists. There are a few other doors along the hallway providing access to attic storage rooms.

*Alterations*

Since constructed, there have been minimal alterations to the exterior or interior of the house. Metal and glass security doors replaced exterior wooden screen doors within the last 20 years and the owner added two part storm-type windows at approximately the same time.

**Garage 1925; (Photos 8, 16)**

The architects of this Mediterranean Revival house designed the garage in the same style. The rectangular plan one-story flat roofed garage measures 18' 6" wide by 22' in length. A red tile visor roof hides the flat roof on the south façade. Two concrete-capped brick piers extend beyond the roofline on each of the façade corners. The garden wall connecting the house to

**National Register of Historic Places  
Continuation Sheet****United States Department of the Interior  
National Park Service**

Latuda, Frank, House, Las Animas County, Colorado

Section number 7 Page 7

the garage contains concealed piping for steam heat from the boiler in the basement to the radiators in the garage. Heating a garage was considered an innovation at the time of construction. The owner disconnected the system from the boiler some years ago, but the pipes and radiators are still in place. By the 1960s the original folding doors of the garage deteriorated to a point beyond repair. The owner replaced the doors with an overhead garage door custom-designed to mimic closely the original doors. The north-facing wall of the garage contains two six-over-six windows, but they are blocked from an outside view by the shed which abuts the garage on the north side (see photo 9). The windows are, however, visible from inside the garage.

**Shed ca. 1930; (Photo 9)**

The only non-contributing building on the property is a rectangular plan shed with stucco covering the exterior walls. A shed roof angles downward to the north lower yard where it sits abutting the north end of the garage. The west-facing side originally contained the single garage door opening. An off center six-panel metal door and small aluminum slider window now occupy the opening. This alteration occurred within the last 20 years. Vertical wood siding clads the area between the roof and the top of the west and east walls. Due to the changes in use and recent changes to the opening, the shed is counted as a non-contributing building.

The Latuda family originally constructed the building as a second garage. The current owner, Charlie Latuda, revealed in an interview that at an early age (approximately 7 years old), he and a friend were playing with matches inside the building and accidentally set it on fire. Once repaired, the family turned it into a storage shed for garden tools and miscellaneous items. This lower backyard area, surrounded by retaining walls, is accessed via a set of wooden stairs located near the back entrance of the house.

**Garden Loop Wire Fence 1925; (Photos 6, 9)**

The original garden loop, wire fence surrounds most of the backyard. On the west side, the 4 ½ foot fence runs from the ash pit to the alley and contains the original metal rail, posts, and finials. It sits atop a concrete retaining wall. A double wire gate provides access from an original west side driveway. Another section of the original garden loop, wire fence cuts through the middle of the backyard in an east-west direction (see photo 6). This fence section does not have the metal rail on top, only simple posts. The fence is a contributing structure as it dates to the construction of the house.

**Ash Pit 1925; (No Photo)**

The original concrete ash pit sits next to the sidewalk on the west side yard. It is located just south of the double gated driveway and directly west of the backyard. When growing up, the Latuda boys emptied the basement ash pit into the larger exterior ash pit for a local company to empty. The ash pit is a contributing structure dating to the construction of the house.

**National Register of Historic Places  
Continuation Sheet****United States Department of the Interior  
National Park Service**

Latuda, Frank, House, Las Animas County, Colorado

Section number 7 Page 8**Integrity**

The Frank Latuda House is in excellent condition and is unchanged from its 1925 construction, with the exception of the storm windows and security doors added within the last 20 years. The original doors, windows, ornamentation, and roof tile are all intact and in good condition on the exterior. The ash pit and the garden loop, wire fence are still intact. On the interior, the original wooden floors, trim, doors, handcrafted cabinetry, built-ins and kitchen sink remain intact, as do many of the original light fixtures. The house retains a high degree of integrity of location, design, setting, materials, workmanship, feeling and association.



Latuda, Frank, House  
Name of Property

Las Animas County, Colorado  
County/State

## 8. Statement of Significance

### Applicable National Register Criteria

(Mark "x" in one or more boxes for the criteria qualifying the property for National Register listing.)

- ☐ A Property is associated with events that have made a significant contribution to the broad patterns of our history.
- ☐ B Property is associated with the lives of persons significant in our past.
- ☒ C Property embodies the distinctive characteristics of a type, period, or method of construction or represents the work of a master, or possesses high artistic values, or represents a significant and distinguishable entity whose components lack individual distinction.
- ☐ D Property has yielded, or is likely to yield, information important in prehistory or history.

### Criteria Considerations

(Mark "x" in all the boxes that apply.)

Property is:

- ☐ A owned by a religious institution or used for religious purposes.
- ☐ B removed from its original location.
- ☐ C a birthplace or grave.
- ☐ D a cemetery.
- ☐ E a reconstructed building, object, or structure.
- ☐ F a commemorative property.
- ☐ G less than 50 years of age or achieved significance within the past 50 years.

### Narrative Statement of Significance

(Explain the significance of the property on one or more continuation sheets.)

### Areas of Significance

(Enter categories from instructions)

Architecture

### Periods of Significance

1925

### Significant Dates

1925

### Significant Person(s)

(Complete if Criterion B is marked above).

N/A

### Cultural Affiliation

N/A

### Architect/Builder

Rapp, Isaac Hamilton

Spencer, Francis Wayland

Vorhees, Roy Webster

## 9. Major Bibliographical References

### Bibliography

(Cite the books, articles and other sources used in preparing this form on one or more continuation sheets.)

### Previous documentation on file (NPS):

- ☐ preliminary determination of individual listing (36 CFR 67) has been requested
- ☐ previously listed in the National Register
- ☐ previously determined eligible by the National Register
- ☐ designated a National Historic Landmark
- ☐ recorded by Historic American Buildings Survey

# \_\_\_\_\_

- ☐ recorded by Historic American Engineering Record

# \_\_\_\_\_

### Primary location of additional data:

- ☒ State Historic Preservation Office
- ☐ Other State Agency
- ☐ Federal Agency
- ☐ Local Government
- ☐ University
- ☐ Other

Name of repository:

Colorado Historical Society

**National Register of Historic Places  
Continuation Sheet****United States Department of the Interior  
National Park Service**

Latuda, Frank, House, Las Animas County, Colorado

Section number 8 Page 9**SIGNIFICANCE**

The 1925 Frank Latuda House is eligible under Criterion C for **Architecture**, as an excellent example of an early twentieth-century distinctive Mediterranean Revival style house. The house displays prominent features of the style with the use of a red tile roof, subdued and limited application of ornamentation, a low-pitched hipped roof, arched entrances and light colored brick to contrast with the red tile roof. Appearing more frequently in larger Colorado cities during the 1920s, the Mediterranean Revival style is not a common style found in Trinidad. It is the only documented Trinidad house designed in this style by the town's prolific architectural firm I.H. Rapp, W.M. Rapp and A.C. Hendrickson, Architects.<sup>1</sup> The period of significance is 1925, the year of construction.

The Frank Latuda House is significant at the state level, as it is the only unaltered, intact Mediterranean Revival residence and garage known to exist in rural eastern Colorado. According to the Office of Archaeology and Historic Preservation's state inventory list to date, only two other Mediterranean Revival style houses exist in rural eastern Colorado: the Petteys Mansion in Brush (5MR.819) and the Hamerslough Residence in Trinidad (5LA.2179.241). Both of these resources have lost integrity with the Petteys Mansion having recent alterations and an addition, and an asphalt shingle roof replacing the original tile roof on the Hamerslough Residence. With the two original unaltered buildings and two unaltered structures intact along with the garage's original heating system intact and the house's original interior woodwork, hardware, architect designed cabinets and built-in dressers, doors, light fixtures and kitchen sink intact, the Frank Latuda House retains a high degree of integrity of location, design, setting, materials, workmanship, feeling and association.

Initially popularized by the 1915 Pan American Exhibition in San Diego, Mediterranean Revival style architecture became a prominent eclectic design in coastal cities of Florida and California. The style evolved from a renewed interest in both palaces of the Italian Renaissance period and sixteenth century seaside villas. It began appearing in other cities and towns throughout America by the 1920s and continued into the 1940s. The nation's early twentieth-century versions typically are multi-story, based on a rectangular floor plan, and display prominent and solid façades. Wall surfaces are generally of stucco or light colored brick topped by a flat or low-pitched terra cotta or tile roof. Arched entrances, scrolled or tile-capped parapet walls and articulated door surrounds are common as are wrought iron details. Other ornamentation may span from simple to dramatic reflecting a variety of Mediterranean influences including Classical, Spanish or Beaux-Arts detailing.

<sup>1</sup> Although by 1925, Isaac H. Rapp was the only surviving partner, the firm continued operating under the name of I. H. Rapp, W. M. Rapp and A. C. Hendrickson, Architects for some time. After William Mason Rapp passed away on 4 June 1920 and Arthur Hendrickson 30 July 30 1921, Francis Wayland Spencer became the head draftsman and drafted the plans for the Frank Latuda House. Roy Webster Vorhees became the architectural firm's building supervisor.

**National Register of Historic Places  
Continuation Sheet****United States Department of the Interior  
National Park Service**

Latuda, Frank, House, Las Animas County, Colorado

Section number 8 Page 10**HISTORICAL BACKGROUND**

Trinidad, the county seat of Las Animas County, is located in southern Colorado. To the west of Trinidad is the towering majesty of the Rocky Mountains and to the east is a vast stretch of prairie land that extends to the Colorado border with Kansas. Established as a trading stop on the Mountain Branch of the Santa Fe Trail, Trinidad became a permanent settlement in 1861.

In 1925 Trinidad was the fourth largest city (in population) of Colorado with 15,000 individuals listed within the city limits. Its geographical location, in the southeastern part of the state, made it a gateway for rail and automobile travel. It continued to possess commercial importance as an active supply center for both the city and the surrounding coal camps. The downtown area, by the mid-1920s, reached its defining limits of growth and continued to exist as a vibrant commercial center.

Three major railroads served Trinidad connecting it with Denver to the north, Chicago to the east, Los Angeles on the west coast, and Dallas and Fort Worth to the southeast. In addition, the Colorado Fuel and Iron Company's Colorado and Wyoming Railway linked Trinidad with large coal mining camps to the west in the Purgatory River Valley. For touring motorists, Trinidad was on the National Old Trails, the Colorado-to-Gulf and the Plains-Mountain Highways.

In its 1925 booklet the local Chamber of Commerce waxed enthusiastically about the community: "In short, Trinidad has all the advantages and none of the discomforts of a modern growing city, being an ideal place to have a home, rear and educate children. There are social, educational, church and fraternal advantages and business opportunities here."

**Treat's North Side Addition**

Charles Payson Treat was one of Trinidad's early day residents and builders. Before his arrival in town, he already achieved fame as a noted railroad and canal builder. He was involved in the construction of 1,500 miles of railroads in the United States. He also achieved engineering fame as the builder of the Nicaragua Canal, which aided in the opening of that country to cultivation and settlement. Treat was a former associate of F.J. Hull of Chicago, original owner of the famous Hull House, and with Hull collaborated on a plan to find homes for former slaves after the Civil War in which Treat served as a soldier (*Chronicle-News*, 29 January 1926, p. 1). Upon his arrival in Trinidad, Treat became extensively involved in real estate. On the town's north side, he established his large tract of property holdings known as C.P. Treat's North Side Addition in 1879. In 1882, he built the town's first street railway system, a horse (mule) car line (*Daily News*, 2 July 1882, p.4). The line ran north on Commercial Street, from the center of town, and then west along the center-divider of Colorado Avenue from Nevada to Willow streets. The street railway line bisected Treat's real estate holdings as it traveled west along Colorado Avenue, making the service a convenient way for prospective buyers to reach and view his properties. The line operated until 1891 (*Daily Advertiser*, 10 December 1891, p. 4).



**National Register of Historic Places  
Continuation Sheet****United States Department of the Interior  
National Park Service**

Latuda, Frank, House, Las Animas County, Colorado

Section number 8 Page 11**Construction History**

In 1884, a two-story Gothic Revival style house built for Henry Detmer occupied the present day location of the Frank Latuda House (*Daily Advertiser*, 20 May 1884, p. 4; and photo H10). It is unknown what became of the house; however, it was no longer on the site when Frank Latuda commissioned I.H. Rapp to design his home in circa 1924.

There are few details available about the construction history of the Frank Latuda House. According to the *Picketwire* newspaper, in mid-1924 "after an extended sojourn in California," the Latuda family was expected to return to Trinidad (18 June 1924, p. 7; 12 July 1924, p. 4). The only newspaper item found mentioning the house's construction is one appearing in the "Local News In Paragraphs" column of the *Chronicle-News*, on 23 March 1925. "The fine residence of Frank Latuda at Colorado and Prospect is nearing completion." Not until many years later, when a newspaper article appeared interviewing Francis W. Spencer (the head draftsman for the Frank Latuda House), was the name of the architectural firm responsible for designing the Frank Latuda House known publicly (*Chronicle-News*, 29 September 1930, p. 3). Fortunately, the original architect's plans for the house dated 6 October 1924 survived and are in the possession of the current owner, Charles D. Latuda. It is likely construction began shortly after the plans were drawn and the completion date is believed to have been after the brief newspaper item appeared in March 1925.

**The Latuda Family***Frank Latuda (Photo H1)*

Frank Latuda was born in June 1867 in the town of Magnago in the province of Lombardy, fifty miles from Milano, Italy. He came to the United States in 1885 and spent some time working in the Pennsylvania coal mines. In 1890 he moved to Walsenburg, Colorado, working at a nearby coal mine. Latuda then went to Castle Gate, Utah, where he met and married his first wife, Castanza. The couple had two children, Angela and Charles. It was with the birth of Charles that tragedy struck the family. Charles died four hours after his birth on 8 August 1899, followed by his mother on 17 September, and his sister Angela on 22 September. The chief cause of all three deaths: blood poisoning.

In 1906 Latuda moved to Dawson, New Mexico, where he met Frank Cameron with whom he became a business associate in the coal mining industry. In 1910, Latuda returned to Italy to find a new wife. While there, he met Rosa (Rose) Scampini, from the village of Bienate, not far from Latuda's home town of Magnago. He proposed marriage to her with the approval of her family. He returned to the United States, arriving in Trinidad to arrange for a residence for his future bride. In 1910, Miss Scampini's brother put his sister on a ship destined for New York City. Latuda met her in New York where they were married. The couple came to Trinidad and Latuda continued his business dealings in Dawson, New Mexico. In 1911, Frank and Rose's first child was born. Keeping with an Italian tradition, they named him Charles (see photo H3) after the son who was born during Latuda's first marriage and died in 1899. The birth of three more children followed with Frank in 1912, Robert in 1913, and Alexander (Bud) in 1916.

**National Register of Historic Places  
Continuation Sheet****United States Department of the Interior  
National Park Service**

Latuda, Frank, House, Las Animas County, Colorado

Section number 8 Page 12

In 1917, Cameron and Latuda organized the Liberty Fuel Company, with a main office located in the Kearns Building in Salt Lake City, and established a coal mine in Carbon County, Utah. When the local post office opened, both the mine and town became known as "Latuda" in honor of Frank Latuda. The mine produced thousands of tons of coal over the years until it closed in 1966 due to rising costs and a dwindling market for commercial coal (*Chronicle-News*, 1 July 1966, p.1, *Salt Lake Tribune*, 28 June, 1966, p. 18).

On 22 August 1918 Frank's son, Charles Joseph, was shot with a pistol belonging to the father of one of his playmates. He died late that evening (*Chronicle-News*, 23 August 1918, p. 1; *Evening Picketwire*, 23 August 1918, p. 1). The last child born to Frank and Rose Latuda was born in this house on 7 December 1925, and keeping with the Italian family tradition of naming the next born for a deceased child, his first name was Charles. They distinguished this son from his deceased brother and his deceased half-brother by giving him the middle name Donald.

Over the years, Frank Latuda continued in the coal mining industry, became a widely known fuel dealer and served as president of the Liberty Fuel Company. He profited through wise investment in various other business enterprises. In 1918, he purchased Senator Casimiro Barela's Ranch at Barela, Colorado. Latuda died from acute appendicitis on 10 May 1931 at Victory Hospital in Napa, California. He was attending the California Retail Fuel Dealer's convention at Boyes Springs, California, at the time (*Chronicle-News*, 11 May 1931, pp.1 & 4; 13 May 1931 pp. 1 & 4; *Independent*, Walsenburg, CO, 15 May 1931, p. 1; *Salt Lake Tribune*, 12 May 1931, p. 26; *Standard Examiner*, Ogden, Utah, 11 May 1931, p.8).

*Rose Emma Latuda (Photo H2)*

Frank Latuda's wife Rose E. (Scampini) Latuda was born on 18 June 1881 in Bienate, Italy, and at an early age became a professional dressmaker in her home country. She was a prominent Trinidad resident and philanthropist for many years, generously aiding many worthy programs and charitable institutions. Additionally, she was a member of the Holy Trinity parish and belonged to many organizations and local clubs. Rose Latuda lived in the house until she passed away on 22 October 1969 (*Chronicle-News*, 23 October 1969, p.1).

*Charles Joseph Latuda (Photo H3)*

Charles J. Latuda, the first-born child of Frank and Rose Latuda, was born in 1911 and, according to an Italian tradition, his parents named him after the previous male child (his half-brother) who died at Castle Gate, Utah, in August 1899, during Frank Latuda's first marriage. Tragically, the second Charles was killed by a pistol shot from a gun owned by the father of one of his companions (*Chronicle-News*, 23 August 1918, p.1; *Evening Picketwire*, 23 August 1918, p.1).

*Frank August Latuda (Photo H5)*

Frank A. Latuda, the second child of Frank and Rose Latuda, was born in Trinidad on 10 June 1912. He graduated from Holy Trinity High School in 1931 and then attended St. Mary's

**National Register of Historic Places  
Continuation Sheet****United States Department of the Interior  
National Park Service**

Latuda, Frank, House, Las Animas County, Colorado

Section number 8 Page 13

College in Moraga, California. He graduated from St. Mary's in 1935 with a degree in business administration. Upon graduation, he moved to Latuda, Utah, where he directed tipple operations at the Liberty Fuel Company mine. He served four-and-a-half years in the U.S. Army Signal Corp during World War II, reaching the rank of Master Sergeant. Towards the end of the war, the Corp selected him to attend classes in Germany for the Armies of Occupation. After discharge, he returned to Latuda, Utah, and resumed his position at the coal mine until it closed in 1966 (*Salt Lake Tribune*, 28 June 1966, p. 18).

Once the mine closed, Latuda split his residence between Helper, Utah, and Trinidad, Colorado, where he lived at the nominated property with his mother and younger brother, Charles Donald. He enjoyed fishing and hunting and was both actively involved in and a financial supporter of Trout Unlimited, Ducks Unlimited, the World Wildlife Fund and the Nature Conservancy. He was a frequent contributor to many charities. He passed away on 18 December 1993 (*Chronicle-News*, 20 December 1993, p. 6).

*Robert Angelo Latuda (Photo H4)*

Robert A. Latuda was born on 3 July 1913. He graduated from Holy Trinity High School in Trinidad and attended St. Mary's College in Moraga, California. After college, he returned to Trinidad, where he spent the remainder of his life involved in various businesses and was a partner in a ranch. He married Mildred Benich in 1938. The family included two sons, Robert and George, and three daughters, Rose Janice, Cathy Ann and Mary Carla. The family home was at 1207 Alta Street in Trinidad. Latuda passed away on 5 September 1974 (*Chronicle-News*, 6 September 1974, pp. 1 & 6).

*Alexander Earl (Bud) Latuda (Photo H4)*

Alexander Earl (Bud) Latuda was born in Trinidad on 22 December 1916. Like his two older brothers, he was a graduate of Holy Trinity High School and St. Mary's College in Moraga, California. He married Helen Pople in 1939 and the family grew to include two sons, Frank and James. Although Bud spent most of his life in Trinidad, for a period he worked for the Liberty Fuel Company in Salt Lake City, Utah. While in Trinidad he worked for the Trinidad National Bank. He passed away at the age of 57 on 31 January 1974 (*Chronicle-News*, 31 January 1974, p. 1).

*Charles (Charlie) Donald Latuda (Photos H4, H5, & H6)*

Charles D. Latuda was born on December 7, 1925, at the Frank Latuda House. Charles, named after his brother who died in 1918, graduated from Holy Trinity High School in 1944. The armed services drafted him into the Navy where he served two-and-a-half years in the Pacific. He received his honorable discharge in 1946. After the service, from 1946 to 1948, he attended Trinidad State Junior College (TSJC) and then Denver University, graduating Phi Beta Kappa in 1951 with a degree in Liberal Arts. While he was attending classes at TSJC and then at Denver University (1948 through 1951), he became head football coach at Holy Trinity High School. Latuda continued as Holy Trinity's football coach until 1956. From 1956 to 1989,



**National Register of Historic Places  
Continuation Sheet****United States Department of the Interior  
National Park Service**

Latuda, Frank, House, Las Animas County, Colorado

Section number 8 Page 14

Latuda taught Italian, Spanish and English classes at TSJC. During the same period, he was the Director of Athletics and the Assistant Football Coach at TSJC. In addition to his coaching duties, he owned and operated a cattle ranch east of Trinidad from 1957 to 2007. He continues to live at the nominated property.

**Architects***Isaac Hamilton Rapp (Photo H7)*

Isaac Hamilton Rapp was born in New York City in December (day unknown) 1854. He was the oldest son of Isaac and Georgeina Rapp. The senior Rapp left New York and journeyed west, settling in Carbondale, Illinois. In 1856, his wife and two children followed. The family grew to include nine children, two girls and seven boys. Four of the boys became architects.<sup>2</sup> Although Isaac Hamilton Rapp attended Normal College, now Southern Illinois University, no advanced architectural courses were available at the time. He likely received some guidance in the building trade from his father who was a carpenter and building supervisor in Carbondale.

By March 1885, Rapp lived in Anthony, Kansas, where he had an architectural partnership with Charles William Bulger (1851-1922) who came from Delphi, Indiana, in 1880. Rapp returned to Illinois in March 1886 where at Odin, Illinois, he married Jean Morrison. The partners remained in Anthony and designed several residences, commercial and religious buildings until Bulger left for Trinidad, Colorado, in April 1888. Rapp followed him a month later. Together they designed numerous buildings of all types in Trinidad, of which eighteen are extant dating between July 1888 and October 1890. Bulger suffered from Trinidad's high altitude (6,025 feet) and in March 1891, moved to Galveston, Texas.

Rapp's brother William Mason Rapp (born October 29, 1863) then joined Isaac after the departure of Bulger and they formed the Trinidad firm of I.H. & W.M. Rapp, Architects. The firm's main office was always located in Trinidad, but at times they also had offices in Santa Fe and Las Vegas, New Mexico. In 1900, while their office was open in Las Vegas, Arthur C. Hendrickson, born in Beloit, Wisconsin, on 3 August 1875, joined the firm as a draftsman. He later became a partner and the firm became known as I.H. & W.M. Rapp and A.C. Hendrickson, Architects. The firm went on to design hundreds of buildings in southern Colorado, throughout the state of New Mexico, and a number of buildings in the panhandle of Texas.

Together they were responsible for creating the architectural style known as Pueblo Revival and designed several buildings in the style. In 1907, C. M. Schenk, president of the Colorado

---

<sup>2</sup> Brothers Isaac Hamilton Rapp and William Mason Rapp practiced architecture together in southern Colorado, New Mexico and the Texas panhandle, while brothers Cornelius Ward Rapp (1860-1926) and George Leslie Rapp (1878-1941) formed a Chicago-based architectural firm designing prominent buildings, including many movie theaters, in Chicago and around the country (Ward Rapp [grandson of William Mason Rapp]. Interview, 13 July 2009, by Ken Fletcher, on file with Ken Fletcher).

**National Register of Historic Places  
Continuation Sheet****United States Department of the Interior  
National Park Service**

Latuda, Frank, House, Las Animas County, Colorado

Section number 8 Page 15

Supply Company, commissioned the Rapp firm to design a building to mirror the San Esteban del Rey Church in Acoma, New Mexico, built in 1630. The Rapp designed building, completed and dedicated in June 1908, served as the Colorado Supply Company Store and Offices located in the coal mining camp of Katcina, Colorado (approximately 13 miles south of Trinidad, which later incorporated into the coal mining camp of Morley). This was the first Pueblo Revival style building, which was extant until 1958 (*Evening Chronicle*, 25 March 1907; *Daily Advertiser*, 17 June 1908). Other notable Pueblo Revival style buildings designed by the Rapp firm include the New Mexico Building at the Panama-California Exposition in San Diego (1914), and the Museum of Fine Arts (1916) and La Fonda Hotel (1920) both in Santa Fe, New Mexico. Other architects copied the design calling it the Santa Fe or Spanish Pueblo Revival styles.

With the deaths of William Rapp (4 June 1920) and Arthur Hendrickson (30 July 30 1921), Francis W. Spencer, who had been Hendrickson's right hand man, became head draftsman. Roy Vorhees, who joined the firm in 1919, continued as building supervisor. Isaac Rapp returned to Trinidad from Santa Fe in 1924 where he had been living and operating the Santa Fe office. The firm continued to design buildings until 1930 when Isaac Rapp retired. He passed away on March 27, 1933 (*Chronicle-News*, 28 March 1933, pp. 1 & 4).

*Francis Wayland Spencer (photo H8)*

Francis W. Spencer was born on 21 January 1868, in Augusta, Wisconsin. According to an interview with Spencer, in the *Chronicle-News* on 20 September 1930, he had past experience in the architectural field with firms in Lincoln, Nebraska, St. Louis, Chicago and Albuquerque. In 1902, while in Albuquerque, he worked on plans for the Santa Fe Railroad's Cardenas Hotel, built in Trinidad. Spencer came to Trinidad in 1908 and joined the Rapp firm. After the death of Hendrickson, he became head draftsman and was responsible for drafting the plans for many buildings, including Frank Latuda's Mediterranean Revival style house on Colorado Avenue. He continued with the Rapp firm until it closed in 1930. Spencer and Vorhees then formed a partnership, Vorhees and Spencer, Architects, and in 1935 redesigned a building in the Art Deco style, the only one of that style in Trinidad. In 1936, they designed a Pueblo Revival house for Joseph Tarabino at El Moro, Colorado, and in 1938 they completed designs for Trinidad State Junior College buildings. Spencer passed away on 26 February 1941 (*Chronicle-News*, 27 February 1941, p. 1).

*Roy Webster Vorhees (photo H9)*

Roy W. Vorhees was born in Seneca, Kansas, on 17 January 1890. He first came to the Trinidad area in 1917 (*Reporter*, 7 December 1917, p. 1). He was building superintendent for the new 1918 post office at Raton, New Mexico, and worked for George A. Shaul, a contractor from Seneca, Kansas. During the time Vorhees was in Raton, New Mexico, it is likely he met William Rapp, for the Rapp firm had commissions in that town at the time. In 1919, Vorhees and his wife moved to Trinidad and he became the building supervisor for the Rapp firm. He was the building supervisor on the Frank Latuda house. He continued with the firm until it closed in 1930. He then partnered with Spencer until Spencer's death in 1941. Vorhees

**National Register of Historic Places  
Continuation Sheet****United States Department of the Interior  
National Park Service**

Latuda, Frank, House, Las Animas County, Colorado

Section number 8 Page 16

---

moved to Roswell, New Mexico, where he became senior member of the firm, Vorhees and Standhardt, Architects. He supervised construction of many of the New Mexico Military Institute buildings in Roswell. During his professional life in New Mexico he was a director of the New Mexico Chapter of the American Institute of Architects (AIA) and President of the New Mexico Board of Examiners of Architects (1951-53). Vorhees supervised construction of a large number of buildings in Colorado and New Mexico. He passed away in Concordia, Kansas, on 31 October 1958 (*Chronicle-News*, 4 November 1958, p.1).



# National Register of Historic Places Continuation Sheet

# United States Department of the Interior National Park Service

Latuda, Frank, House, Las Animas County, Colorado

Section number 9 Page 17

## BIBLIOGRAPHY

Building Elevations and Floor Plans, Residence of Mr. Frank Latuda, Cor. Colo. Ave. and Prospect St., Trinidad, Colo., I.H. Rapp, W.M. Rapp and A.C. Hendrickson, Architects. Oct. 6, 1924.

### *The Chronicle-News* (Trinidad)

- "I.H. & W.M. Rapp." 12 January 1911, p. 8.
- "Charles Joseph Latuda Is Accidentally Shot." 23 August 1918, p.1.
- "Wm. M. Rapp Died Today In Los Angeles." 4 June 1920, pp. 1 & 4.
- "This Community Mourns Death Of Good Citizen - - William M. Rapp." 5 June 1920, p. 4.
- "A.C. Hendrickson, Well Known Resident Of City Died Suddenly." 31 July 1921, p. 1.
- "Arthur C. Hendrickson." By S.W. DeBusk. 5 August 1921, p. 4.
- "Local News In Paragraphs." 23 March 1925, p. 5.
- "Roy W. Vorhees." 2 December 1925, p.1.
- "Charles Payson Treat, Early Day Resident and Builder of Trinidad, Died Thursday at Palo Alto, Calif." 29 January 1926, p.1.
- "F.W. Spencer, Local Architect, After 21 Years With Rapps Here Is Launched in Professional Business For Himself." 20 September 1930, p.3.
- "Frank Latuda Passed Away At Napa, Cal. Yesterday—Was Prominent Citizen Of This City." 11 May 1931, pp. 1 & 4.
- "Funeral of Frank Latuda, Prominent Trinidad Citizen Tomorrow Afternoon, Passed Away At Napa, Cal., Sunday." 13 May 1931, pp. 1 & 4.
- "I.H. Rapp, Prominent Local Citizen Passes Away." 28 March 1933, pp. 1 & 4.
- "Francis W. Spencer Local Architect, Called By Death." 27 February 1941, p.1.
- "Roy W. Vorhees, Former Trinidad Architect, Dies." 4 November 1958, p.1.
- "Latuda, Utah Will Become Ghost Town." 1 July 1966, p. 1.
- "Rose Latuda of Trinidad Dead; Mass On Friday." 23 October 1969, p. 1.
- "Bud Latuda Passes Away." 31 January 1974, p. 1.
- "Bob Latuda Dies Sept. 5." 6 September 1974, pp. 1 & 6.
- "Frank A. Latuda." 20 December 1993, p.6.

### *The Daily Advertiser* (Trinidad)

- "John Burkhart has been preparing the plans for the new residence of Henry Detmer on the north side." 20 May 1884, p. 4.
- "An Ordinance. Granting to the Trinidad Street Railway the privilege of suspending operation .... Dated 9 December 1891." 10 December 1891, p. 4.
- "A Handsome New Store Building and Offices of Colorado Supply Co. Just Completed at Morley." 17 June 1908.

### *The Daily News* (Trinidad)

- "The first trip by the Trinidad street cars, was made yesterday, July 1<sup>st</sup>, anno domini." 2 July 1882, p.4.

### *The Evening Chronicle* (Trinidad)

- "New Camp is Now 'Kadcina'." 25 March 1907.

### *The Evening Picketwire* (Trinidad)

- "Charley Latuda, Age 7 ½ Accidentally Shot, Killed, Mystery Surrounds Details." 23 August 1918, p. 1.
- "William M. Rapp Died Today In Los Angeles." 4 June 1920, p. 1.

**National Register of Historic Places  
Continuation Sheet****United States Department of the Interior  
National Park Service**

Latuda, Frank, House, Las Animas County, Colorado

Section number 9 Page 18

---

*The Evening Picketwire* (Trinidad) continued

"William M. Rapp—Builder." 4 June 1920, p. 4.

"Arthur C. Hendrickson Is Dead Victim Of Heart Failure Saturday." 1 August 1921, p. 1.

"Personals." 18 June 1924, p. 7.

"Personals." 12 July 1924, p. 4.

Fire Insurance Map, Trinidad, Colorado, Pelham, New York: Sanborn Map Company, January 1930.

The Fischer & Jirouch Company, website <http://www.fischerandjirouch.com/company.html>. accessed 1 June 2009.

Fletcher, Ken. "Frontier Architects," 19<sup>th</sup> Annual Collector's Series Calendar. First National Bank In Trinidad. 2005.

Fletcher, Ken. *A Profile of the Architects C.W. Bulger and I.H. Rapp*, Unpublished Manuscript. March 2009. Copyrighted by author.

"Frank Latuda." *Attivita' Italiane nella Intermountain Region*, pp. 216-217. Salt Lake City, UT: International Publishing Company, 1930.

"I.H. & W.M. Rapp, Architects." *Historical and Descriptive Review of Colorado's Enterprising Cities*, Denver, CO: J. Letham. July 1893, p. 45.

"In Memoriam, A.C. Hendrickson." *El Palacio*, Santa Fe, New Mexico, Volume XI, Number 4, (15 August 1921), p. 4.

*The Independent* (Long Beach, California)

"Utah Town 'Dies' July 20." 1 July 1966, p. A20.

*The Independent* (Walsenburg, Colorado)

"Funeral Service For Frank Latude [sic] Held At Trinidad Thursday." 15 May 1931, p. 1.

Jupiter, Florida, Planning and Zoning website "Mediterranean Revival" accessed 8 October 2009.

Latuda, Charles (Charlie) D. Interviews, various between April and August 2009, by Ken Fletcher at the Frank Latuda House. On file with Ken Fletcher, Trinidad, Colorado.

Latuda, Charles D. Photograph collection. On file with Charles D. Latuda. Trinidad, Colorado.

Latuda, website "Carbon County Ghost Towns." [www.legendsofamerica.com/ut-carboncounty5.html](http://www.legendsofamerica.com/ut-carboncounty5.html). accessed 29 June 2009.

Mediterranean, website "A Guide to Colorado's Historic Architecture and Engineering." <http://www.coloradohistory-oahp.org/guides/architecture/med.htm>. accessed 29 June 2009.

*National Funeral Register* (Trinidad).

"Castanza Latuda." 11 May 1910, p. 519.

**National Register of Historic Places  
Continuation Sheet****United States Department of the Interior  
National Park Service**

Latuda, Frank, House, Las Animas County, Colorado

Section number 9 Page 19

Spencer, John (grandson to Francis W. Spencer, architect). Interview, 17 September 2009 by Ken Fletcher at Carnegie Library of Trinidad, Colorado. On file with Ken Fletcher, Trinidad, Colorado.

*The Range* (Raton, New Mexico)

"Architect Wm. Rapp of Trinidad Accompanied by Roy Vorhees ...". 11 May 1920, p.4.

*The Reporter* (Raton, New Mexico)

"Preliminary Work Started." 12 December 1917, p. 1.

*The Salt Lake Tribune* (Salt Lake City, Utah)

"Coal Mining Leader Dies In S.L. Hotel." 14 May 1929, pp. 1 & 16.

"Coal Company President Dies." 12 May 1931, p. 26.

"Coal Mine Boss Recounts Long Trek Underground." 2 February 1941, p. 12A.

"Coal Company Official 27 Years On The Job." 16 April 1944, p. 9B.

"A Town Gives Up; Ghosts Come Next." 28 June 1966, p. 18.

*The Standard Examiner* (Ogden, Utah)

"Widow Accompanies Body Of Mining Man." 11 May 1931, p. 8.

"Trinidad, Colorado, The Gateway to the Great Southwest." The Trinidad Las Animas County Chamber of Commerce, 1925 booklet, located in clipping file of Trinidad Carnegie Library.

Vierra, Carlos and W.M. Danbury. "The Present Day Architecture of Santa Fe." *The Western Architect*, Volume XXXIII, Number 1. (January 1924), p. 11.

The White Lady Of Latuda, website "Haunted Utah." <http://www.prarieghosts.com/latuda.html>. accessed 29 June 2009.



Latuda, Frank, House  
Name of Property

Las Animas County, Colorado  
County/State

## 10. Geographical Data

Acreage of Property less than one

### UTM References

(Place additional UTM references on a continuation sheet.)

1. 13 543 239 4114 232 (NAD27)  
Zone Easting Northing

2. Zone Easting Northing

3. Zone Easting Northing

4. Zone Easting Northing

The UTM's were derived by the Office of Archaeology and Historic Preservation from heads up digitization on Digital Raster Graphic (DRG) maps provided to OAHF by the U.S. Bureau of Land

☐ See continuation sheet

### Verbal Boundary Description

(Describe the boundaries of the property on a continuation sheet.)

### Boundary Justification

(Explain why the boundaries were selected on a continuation sheet.)

## 11. Form Prepared By

name/title Ken Fletcher (for property owner)

organization \_\_\_\_\_ date August 7, 2009

street & number 109 S. Spruce Street, Apt. 3 telephone (719) 680-9138

city or town Trinidad state CO zip code 81082

### Additional Documentation

Submit the following items with the completed form:

#### Continuation Sheets

##### Maps

A **USGS map** (7.5 or 15 minute series) indicating the property's location.

A **Sketch map** for historic districts and properties having large acreage or numerous resources.

#### Photographs

Representative **black and white photographs** of the property.

#### Additional Items

(Check with the SHPO or FPO for any additional items)

### Property Owner

(Complete this item at the request of SHPO or FPO.)

name Charles D. Latuda

street & number 431 West Colorado Avenue telephone \_\_\_\_\_

city or town Trinidad state CO zip code 81082

**Paperwork Reduction Act Statement:** This information is being collected for applications to the National Register of Historic Places to nominate properties for listing or determine eligibility for listing, to list properties, and to amend existing listings. Response to this request is required to obtain a benefit in accordance with the National Historic Preservation Act, as amended (16 U.S.C. 470 *et seq.*)

**Estimated Burden Statement:** Public reporting burden for this form is estimated to range from approximately 18 hours to 36 hours depending on several factors including, but not limited to, how much documentation may already exist on the type of property being nominated and whether the property is being nominated as part of a Multiple Property Documentation Form. In most cases, it is estimated to average 36 hours per response including the time for reviewing instructions, gathering and maintaining data, and completing and reviewing the form to meet minimum National Register documentation requirements. Direct comments regarding this burden estimate or any aspect of this form to the Chief, Administrative Services Division, National Park Service, 1849 C St., NW, Washington, DC 20240.

**National Register of Historic Places  
Continuation Sheet****United States Department of the Interior  
National Park Service**

Latuda, Frank, House, Las Animas County, Colorado

Section number 10 Page 20

---

**GEOGRAPHICAL DATA****VERBAL BOUNDARY DESCRIPTION**

The nominated property is situated on the northeast corner of Prospect Street and West Colorado Avenue on Lots 20 and 21, Block 20 of Treat's North Side Addition to the city of Trinidad, County of Las Animas, State of Colorado. The parcel totals 15,600 square feet.

**BOUNDARY JUSTIFICATION**

The nominated property includes the entire parcel of land historically associated with the Frank Latuda House.

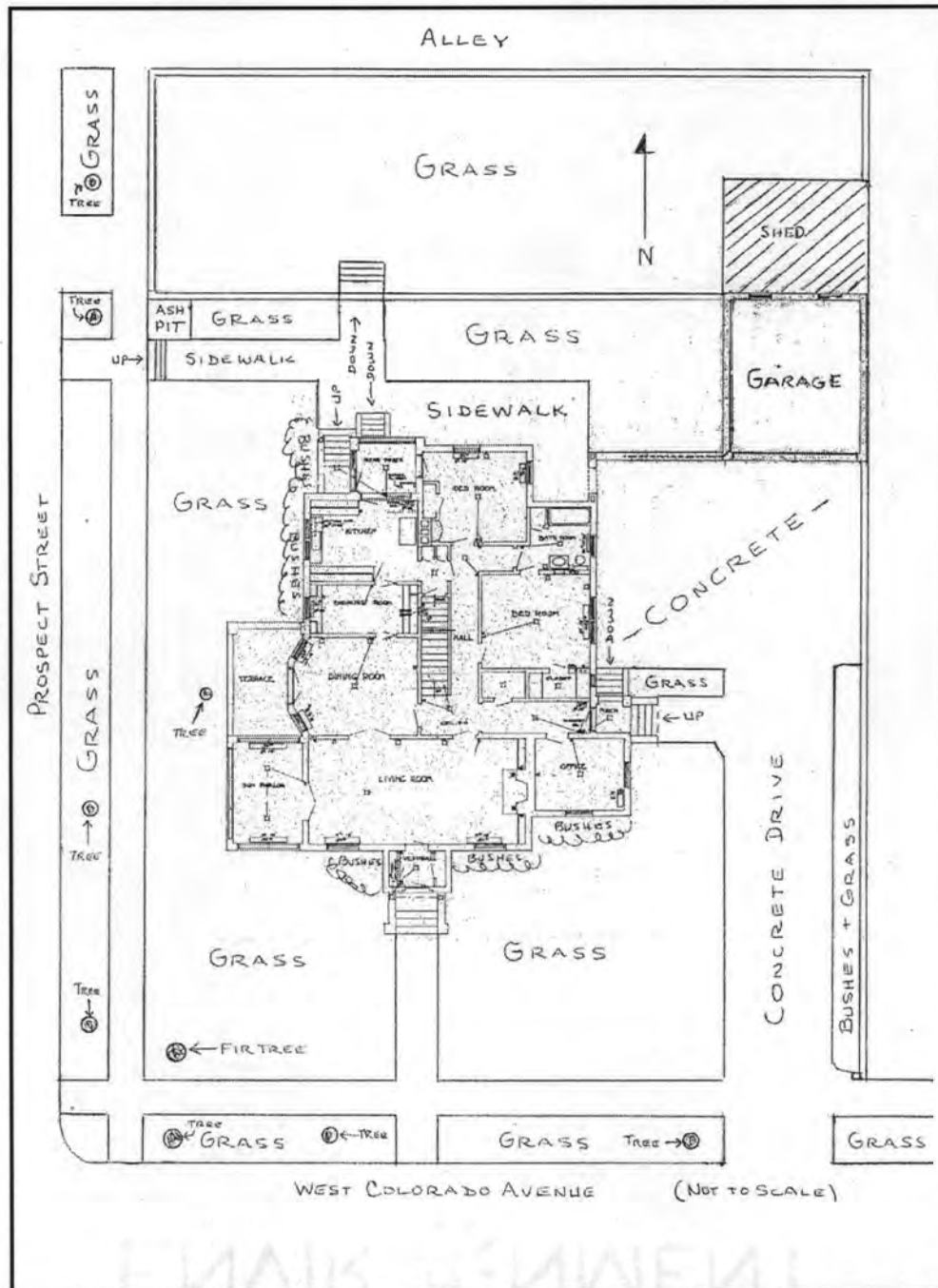
# National Register of Historic Places Continuation Sheet

United States Department of the Interior  
National Park Service

Latuda, Frank, House, Las Animas County, Colorado

Section number 10 Page 21

## SKETCH MAP

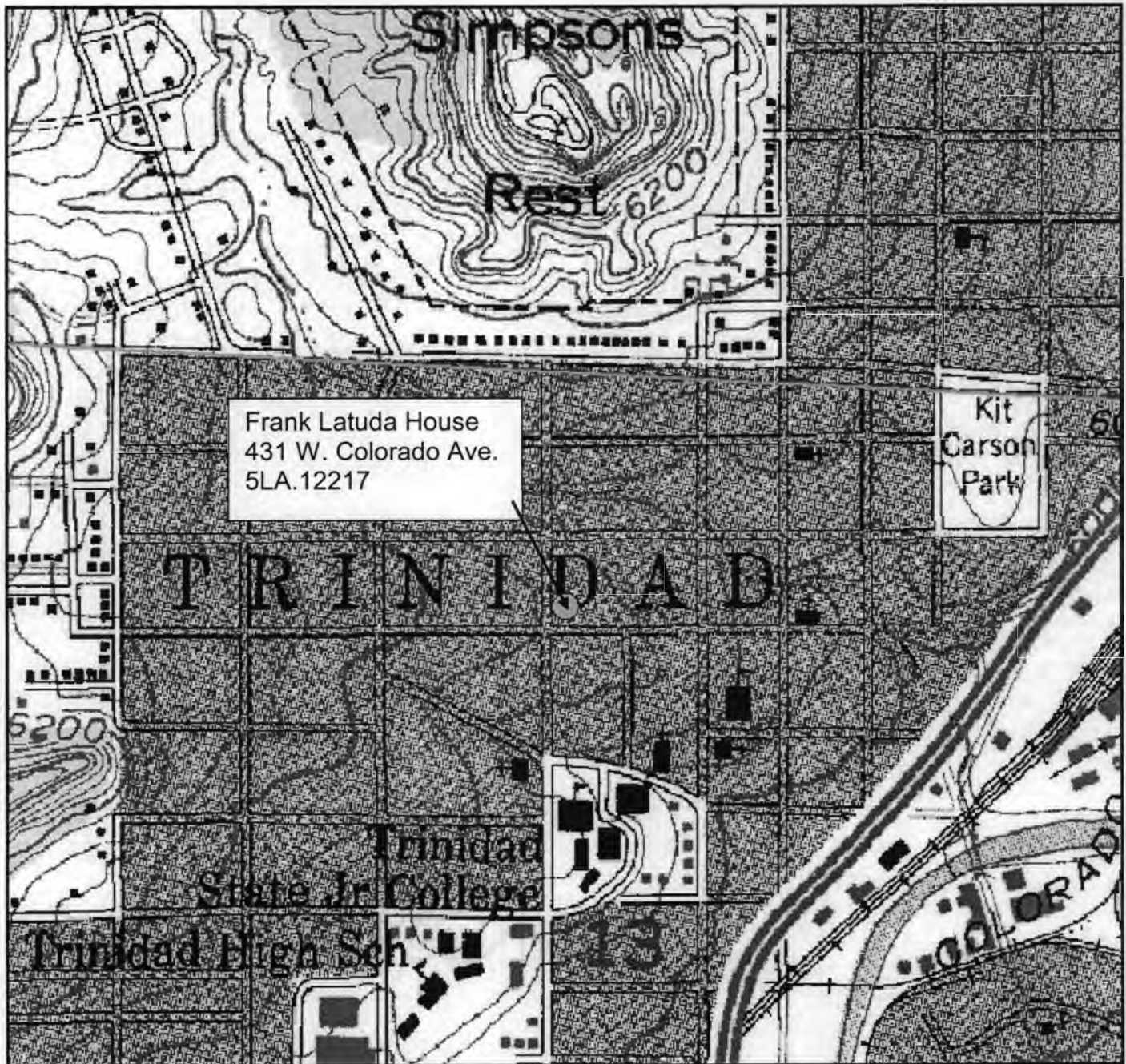


Site Map drawn by Ken Fletcher (May, 2009), over Building Elevations and Floor Plans,  
Residence of Mr. Frank Latuda, Cor. Colo. Ave. and Prospect St., Trinidad, Colo.,  
I.H. Rapp, W.M. Rapp and A. C. Hendrickson, Architect. Oct. 6, 1924.



**National Register of Historic Places  
Continuation Sheet****United States Department of the Interior  
National Park Service**

Latuda, Frank, House, Las Animas County, Colorado

Section number 10 Page 22**USGS TOPOGRAPHIC MAP**Trinidad West Quadrangle, Colorado  
7.5 Minute SeriesUTM: Zone 13; 543 239mE 4114 232mN (NAD27)  
PLSS: 6<sup>th</sup> PM, T33S, R64W, Sec. 13 NE ¼ SE ¼ NE¼ NW ¼  
Elevation: 6075 feet

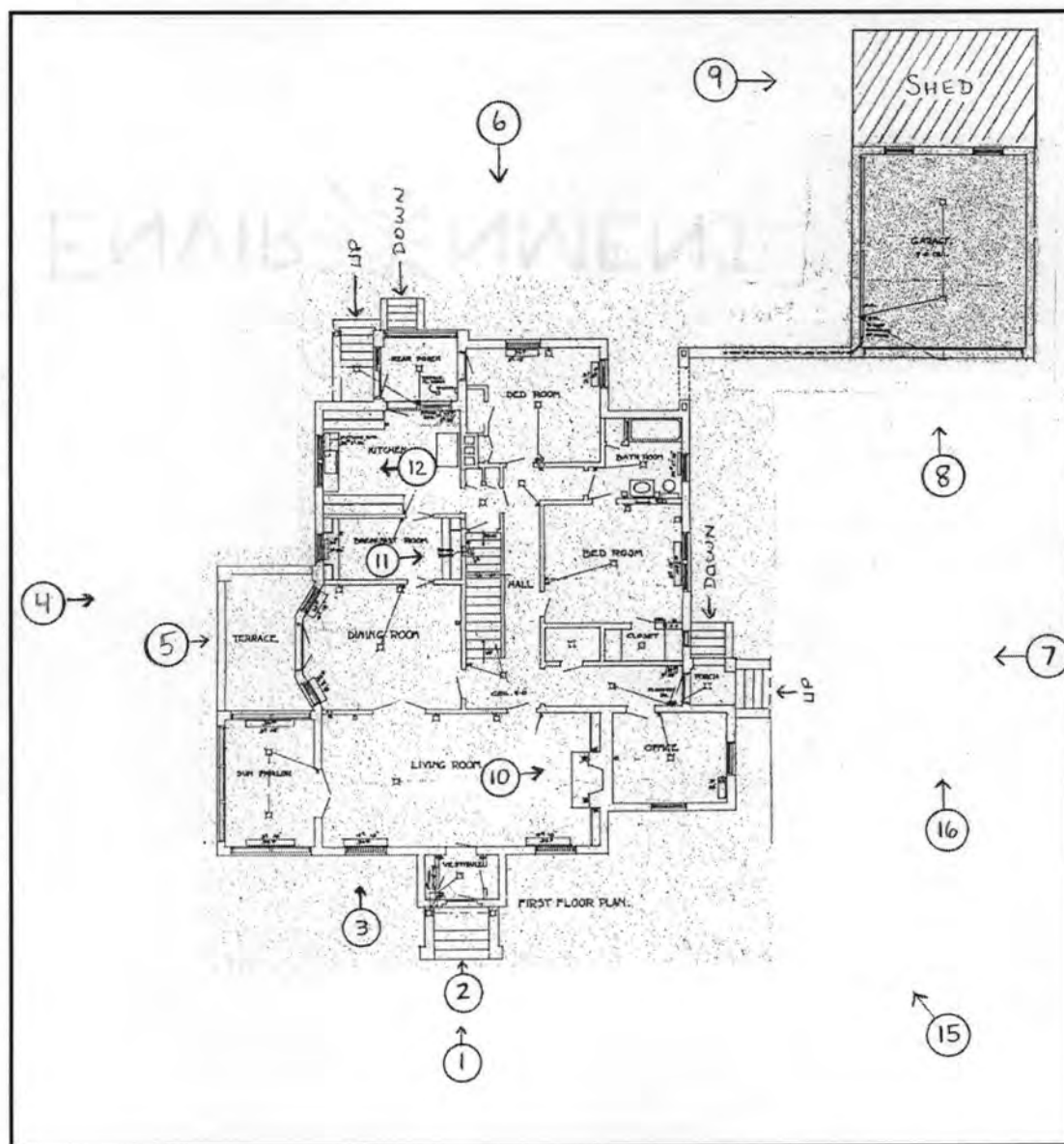
# National Register of Historic Places Continuation Sheet

United States Department of the Interior  
National Park Service

Latuda, Frank, House, Las Animas County, Colorado

Section number \_\_\_\_ Page 23

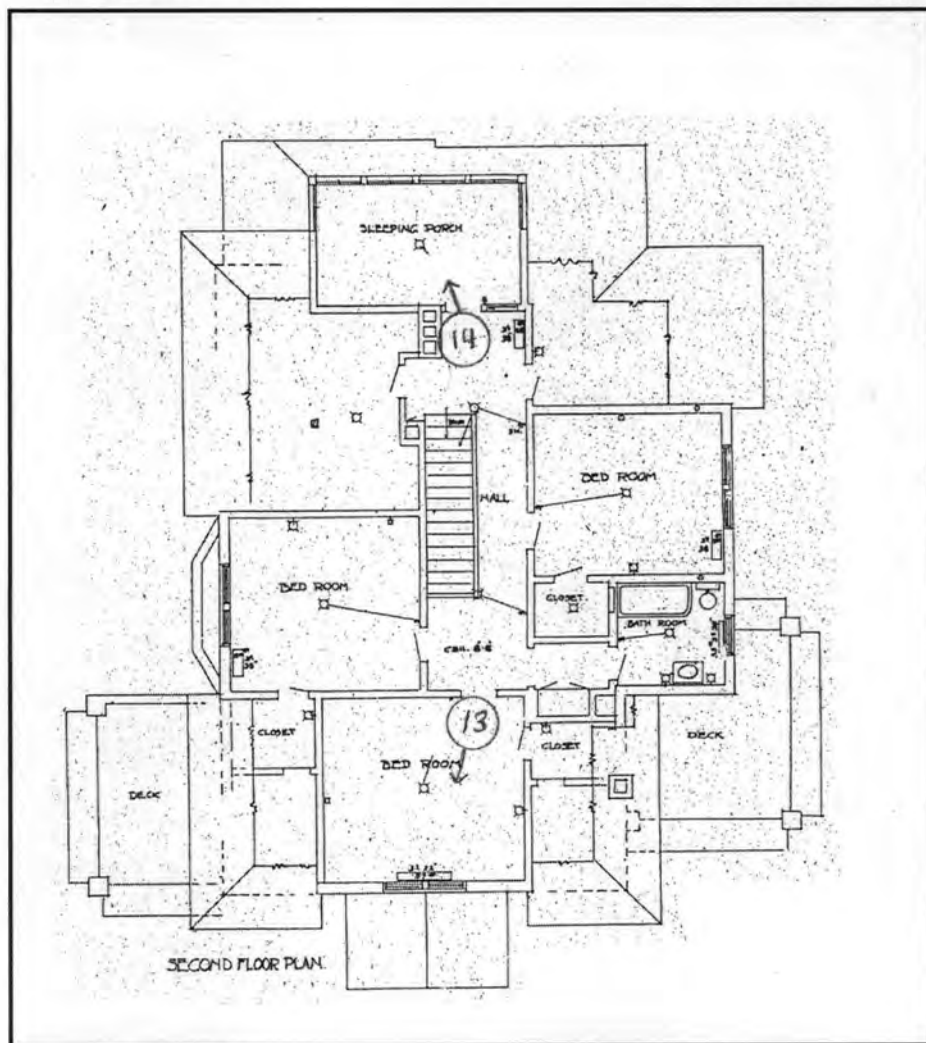
## Photograph Locations - Exterior



Sketch from Building Elevations and Floor Plans, Residence of  
Mr. Frank Latuda, Cor. Colo. Ave. and Prospect St., Trinidad, Colo.,  
I.H. Rapp, W.M. Rapp and A. C. Hendrickson, Architect. Oct. 6, 1924.

**National Register of Historic Places  
Continuation Sheet****United States Department of the Interior  
National Park Service**

Latuda, Frank, House, Las Animas County, Colorado

Section number \_\_\_\_ Page 24**Photograph Locations - Interior**

Sketch from Building Elevations and Floor Plans, Residence of  
Mr. Frank Latuda, Cor. Colo. Ave. and Prospect St., Trinidad, Colo.,  
I.H. Rapp, W.M. Rapp and A. C. Hendrickson, Architect. Oct. 6, 1924.



**National Register of Historic Places  
Continuation Sheet****United States Department of the Interior  
National Park Service**

Latuda, Frank, House, Las Animas County, Colorado

Section number \_\_\_\_ Page 25**PHOTOGRAPH LOG**

The following information pertains to current exterior and interior photographs:

Name of Property: Frank Latuda House  
Location: Trinidad, Las Animas County, Colorado  
Photographer: David Frank  
Date of Photographs: June 8, 2009  
Negatives: TIFF images on CD on file with the National Register,  
Washington, D.C.

Photo No.	Photographic Information
1	South façade of building, looking north
2	South façade of building entrance, looking north
3	South façade of building showing cast panel above front window, looking north
4	West side of building, looking east
5	West side of building showing bay and terrace, looking east
6	North side of building, looking south
7	East side of building, looking west
8	South side of garage, looking north
9	West side of non-contributing shed, looking east
10	Living room, showing fireplace and built in cabinets
11	Breakfast room's original built-in cabinets
12	Kitchen's original built in cabinets and original sink
13	Second floor front bedroom
14	Sleeping porch

The following pertains to additional current exterior photographs:

Name of Property: Frank Latuda House  
Location: Trinidad, Las Animas County, Colorado  
Photographer: Ken Fletcher  
Date of Photographs: May 16, 2009  
Negatives: In possession of Ken Fletcher, 109 So. Spruce St., Apt. 3, Trinidad,  
CO

Photo No.	Photographic Information
15	South and east side of building (compare with historic photo H11), looking northwest
16	South side of garage and attached wall, looking north

# National Register of Historic Places Continuation Sheet

# United States Department of the Interior National Park Service

Latuda, Frank, House, Las Animas County, Colorado

Section number \_\_\_\_ Page 26

## PHOTOGRAPH LOG - HISTORIC

All historic photographs and drawings are from the Charles D. Latuda collection, Trinidad, Colorado, except where noted.

Photo No.	Photographic Information
H1	Frank Latuda, unknown date
H2	Rose Latuda, unknown date
H3	Charles Joseph Latuda (born 1911), photograph 1914
H4	Alexander Latuda on left, Charles Donald Latuda in center and Robert on right, 1933
H5	Charles Donald Latuda on left, Rose Latuda in center and Frank August Latuda, behind Rose and to her left, 1950
H6	Charles Donald Latuda on ranch, December 2006. Tory Abeyta, photographer
H7	Isaac H. Rapp, unknown date, Ken Fletcher collection, Trinidad, Colorado
H8	Francis W. Spencer, September 1928. John Spencer collection, Fort Collins, Colorado
H9	Roy W. Vorhees, <i>Chronicle News</i> , 2 December 1925, p.1
H10	1884 Detmer house, Ken Fletcher collection, Trinidad, Colorado
H11	South and east side of building, ca. 1926
H12	Exterior plans - south and north elevations. Building Elevations and Floor Plans, Residence of Mr. Frank Latuda, Cor. Colo. Ave. and Prospect St., Trinidad, Colo., I.H. Rapp, W.M. Rapp and A.C. Hendrickson, Architects. Oct. 6, 1924.
H13	Exterior plans - east and west elevations. Building Elevations and Floor Plans, Residence of Mr. Frank Latuda, Cor. Colo. Ave. and Prospect St., Trinidad, Colo., I.H. Rapp, W.M. Rapp and A.C. Hendrickson, Architects. Oct. 6, 1924.
H14	Floor Plan - First Floor. Building Elevations and Floor Plans, Residence of Mr. Frank Latuda, Cor. Colo. Ave. and Prospect St., Trinidad, Colo., I.H. Rapp, W.M. Rapp and A.C. Hendrickson, Architects. Oct. 6, 1924.
H15	Floor Plan - Second Floor. Building Elevations and Floor Plans, Residence of Mr. Frank Latuda, Cor. Colo. Ave. and Prospect St., Trinidad, Colo., I.H. Rapp, W.M. Rapp and A.C. Hendrickson, Architects. Oct. 6, 1924.
H16	Floor Plan - Basement. Building Elevations and Floor Plans, Residence of Mr. Frank Latuda, Cor. Colo. Ave. and Prospect St., Trinidad, Colo., I.H. Rapp, W.M. Rapp and A.C. Hendrickson, Architects. Oct. 6, 1924.

**National Register of Historic Places  
Continuation Sheet**

**United States Department of the Interior  
National Park Service**

Latuda, Frank, House, Las Animas County, Colorado

Section number \_\_\_\_ Page 27



Photo H1



Photo H2



**National Register of Historic Places  
Continuation Sheet****United States Department of the Interior  
National Park Service**

Latuda, Frank, House, Las Animas County, Colorado

Section number \_\_\_\_ Page 28

Photo H3



Photo H4



Photo H5

**National Register of Historic Places  
Continuation Sheet****United States Department of the Interior  
National Park Service**

Latuda, Frank, House, Las Animas County, Colorado

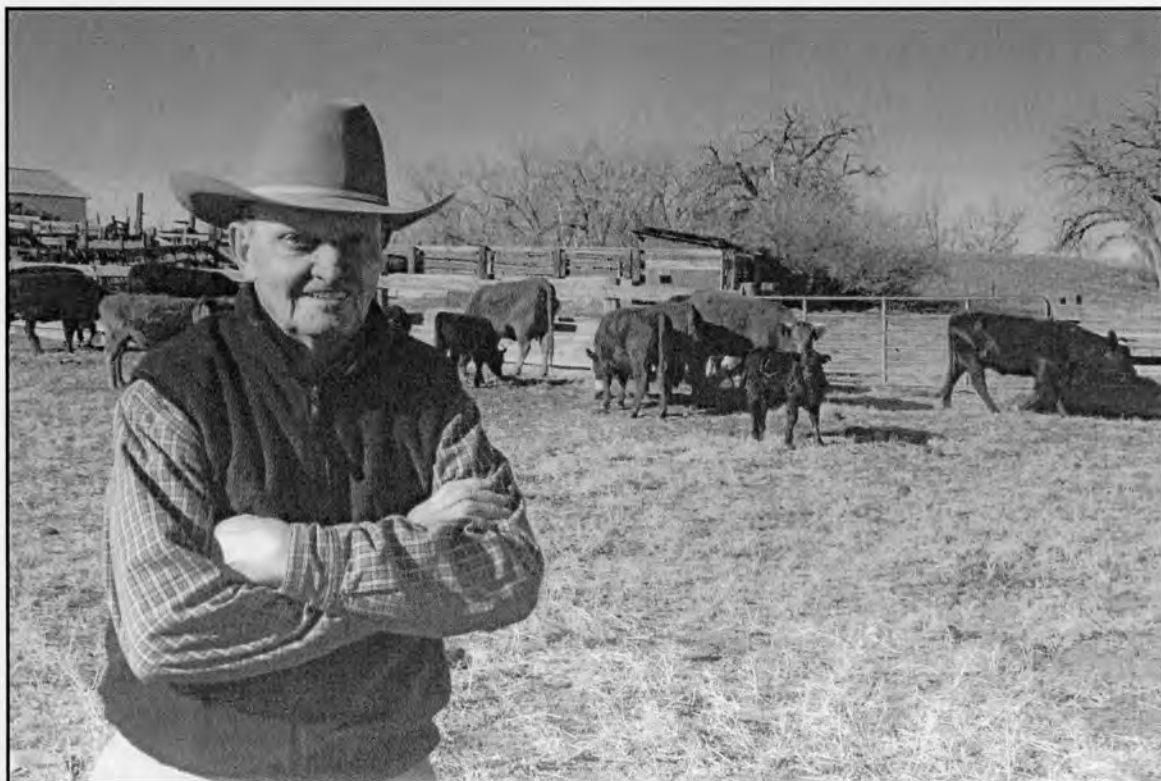
Section number \_\_\_\_ Page 29

Photo H6

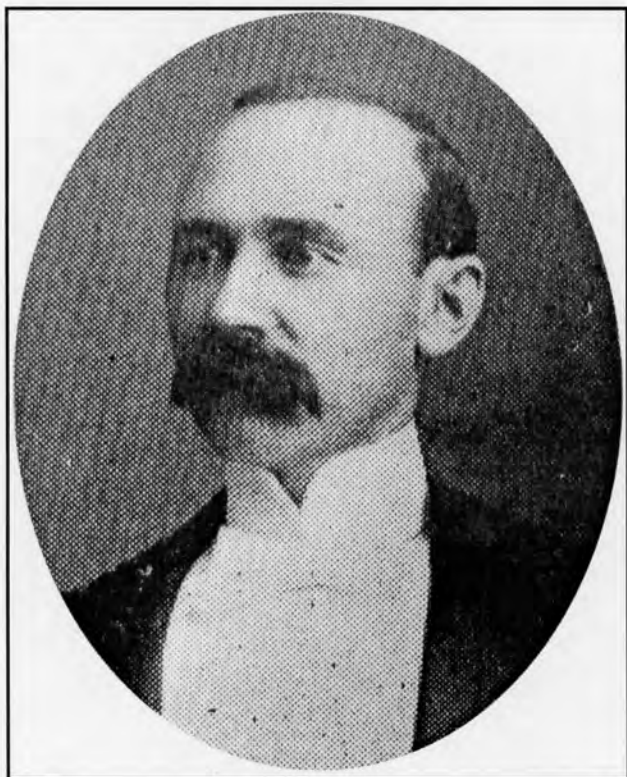


Photo H7



Photo H8

**National Register of Historic Places  
Continuation Sheet****United States Department of the Interior  
National Park Service**

Latuda, Frank, House, Las Animas County, Colorado

Section number \_\_\_\_ Page 30

Photo H9

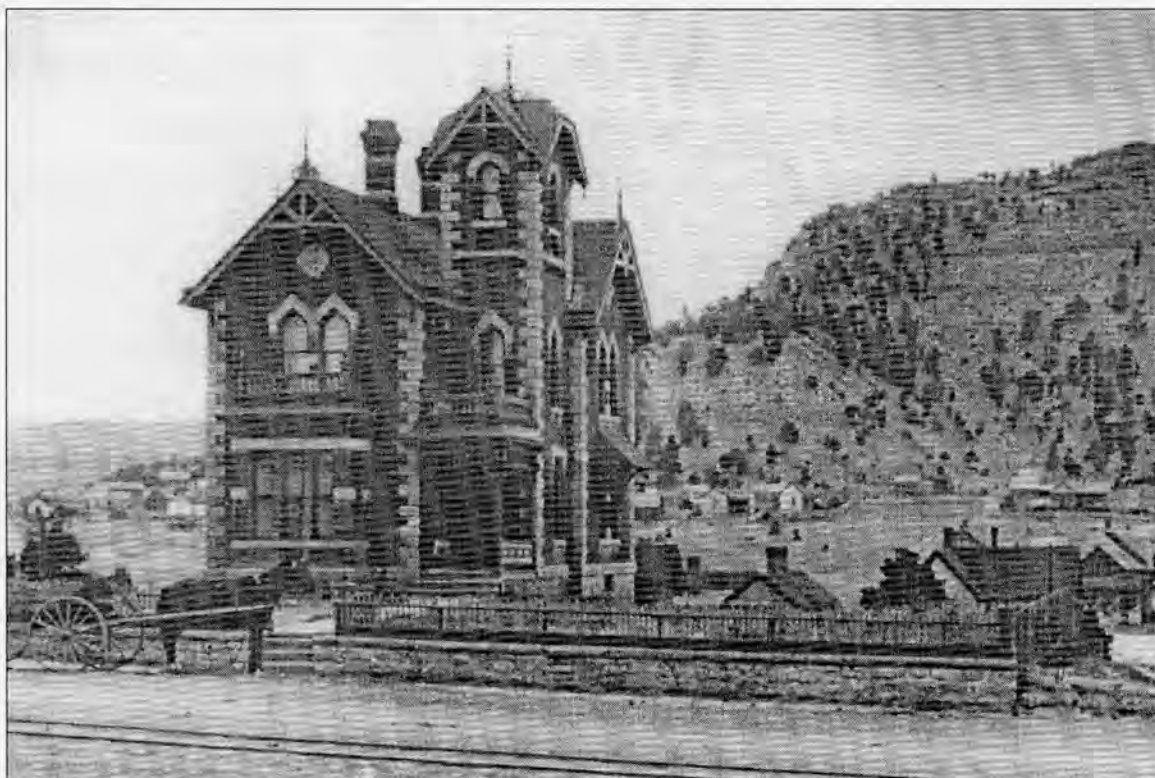


Photo H10



**National Register of Historic Places  
Continuation Sheet****United States Department of the Interior  
National Park Service**

Latuda, Frank, House, Las Animas County, Colorado

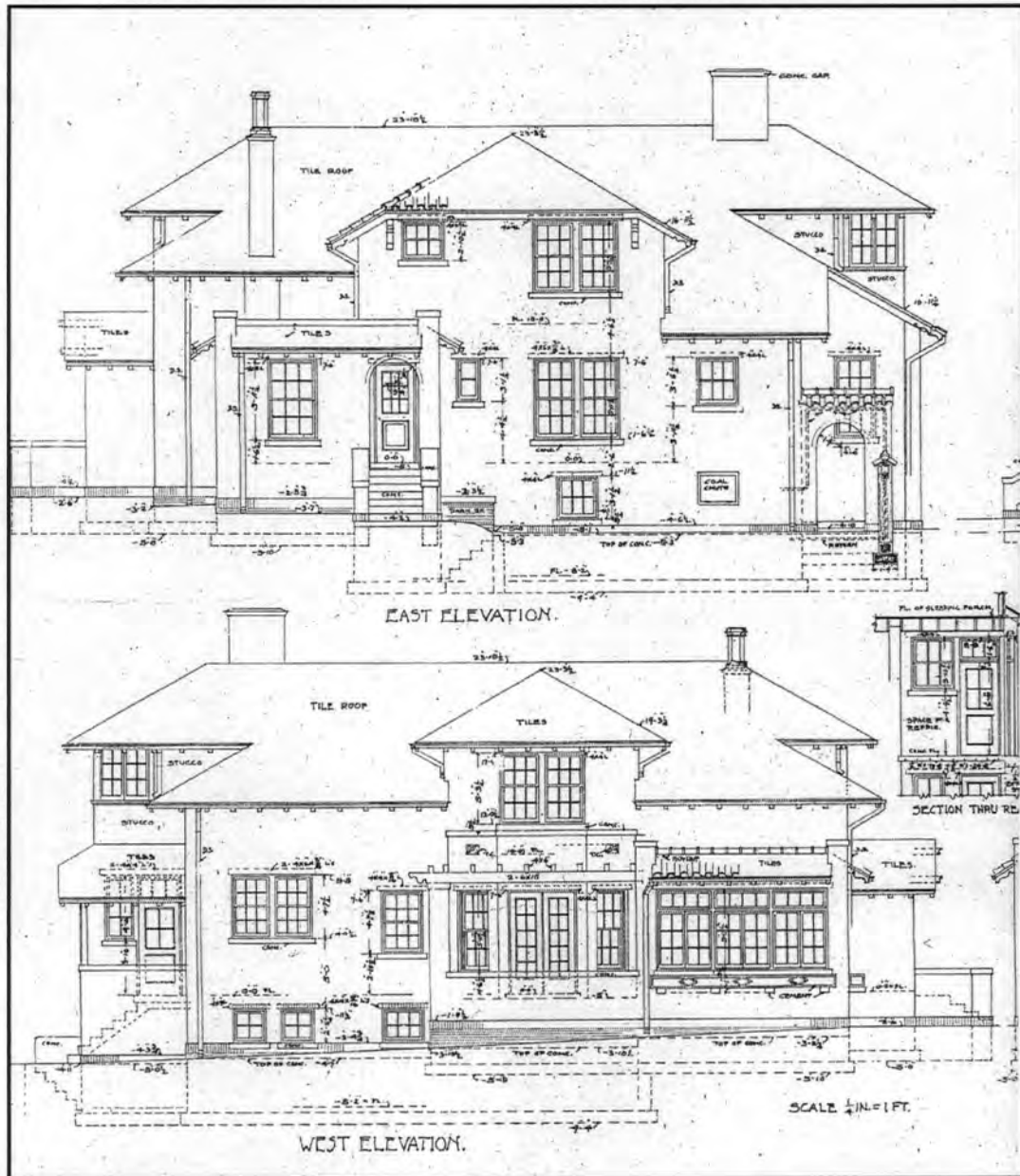
Section number \_\_\_\_ Page 31

Photo H11



**National Register of Historic Places  
Continuation Sheet****United States Department of the Interior  
National Park Service**

Latuda, Frank, House, Las Animas County, Colorado

Section number     Page 33**Exterior Plans – East and West Elevations**

H13



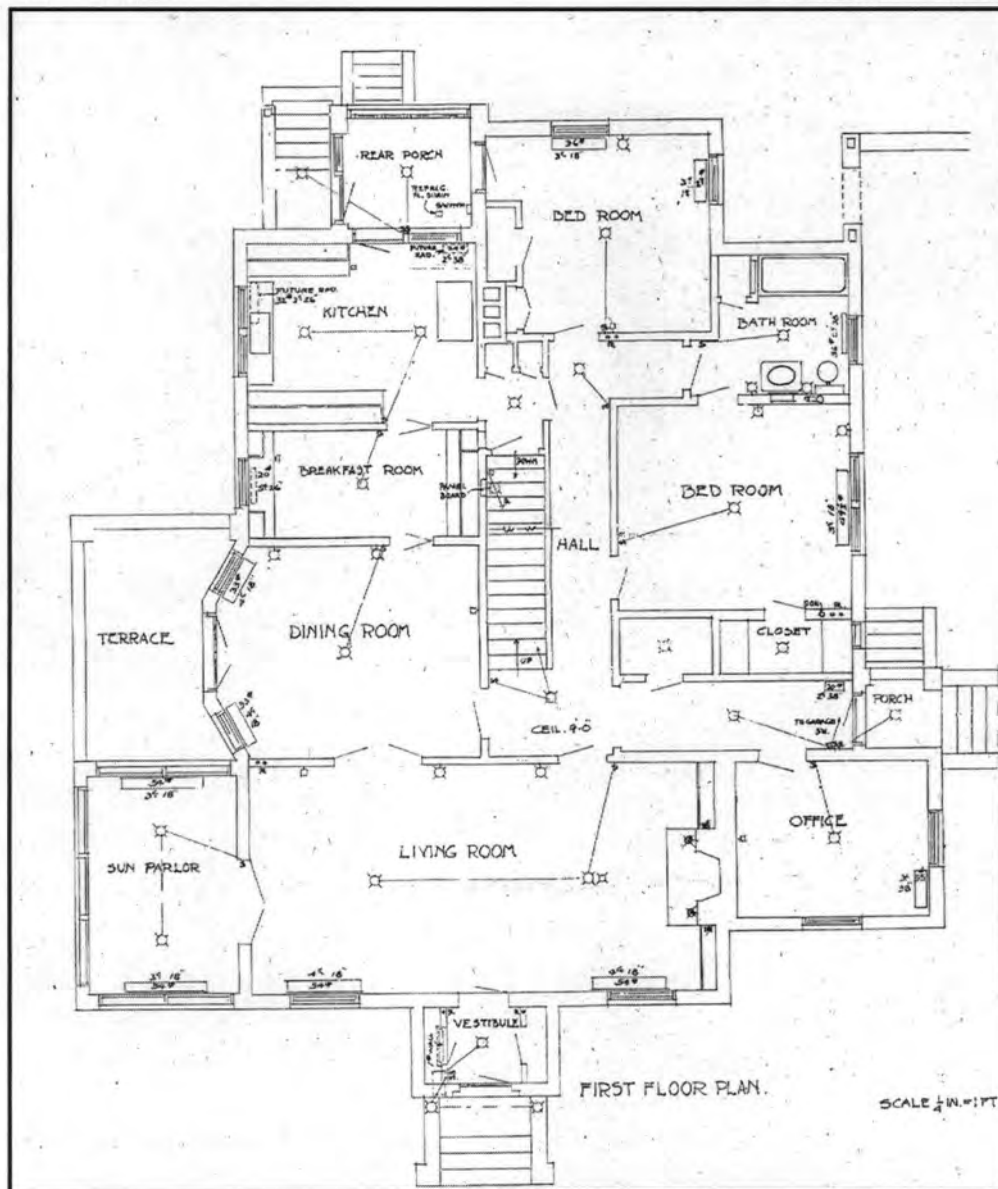
# National Register of Historic Places Continuation Sheet

United States Department of the Interior  
National Park Service

Latuda, Frank, House, Las Animas County, Colorado

Section number \_\_\_\_ Page 34

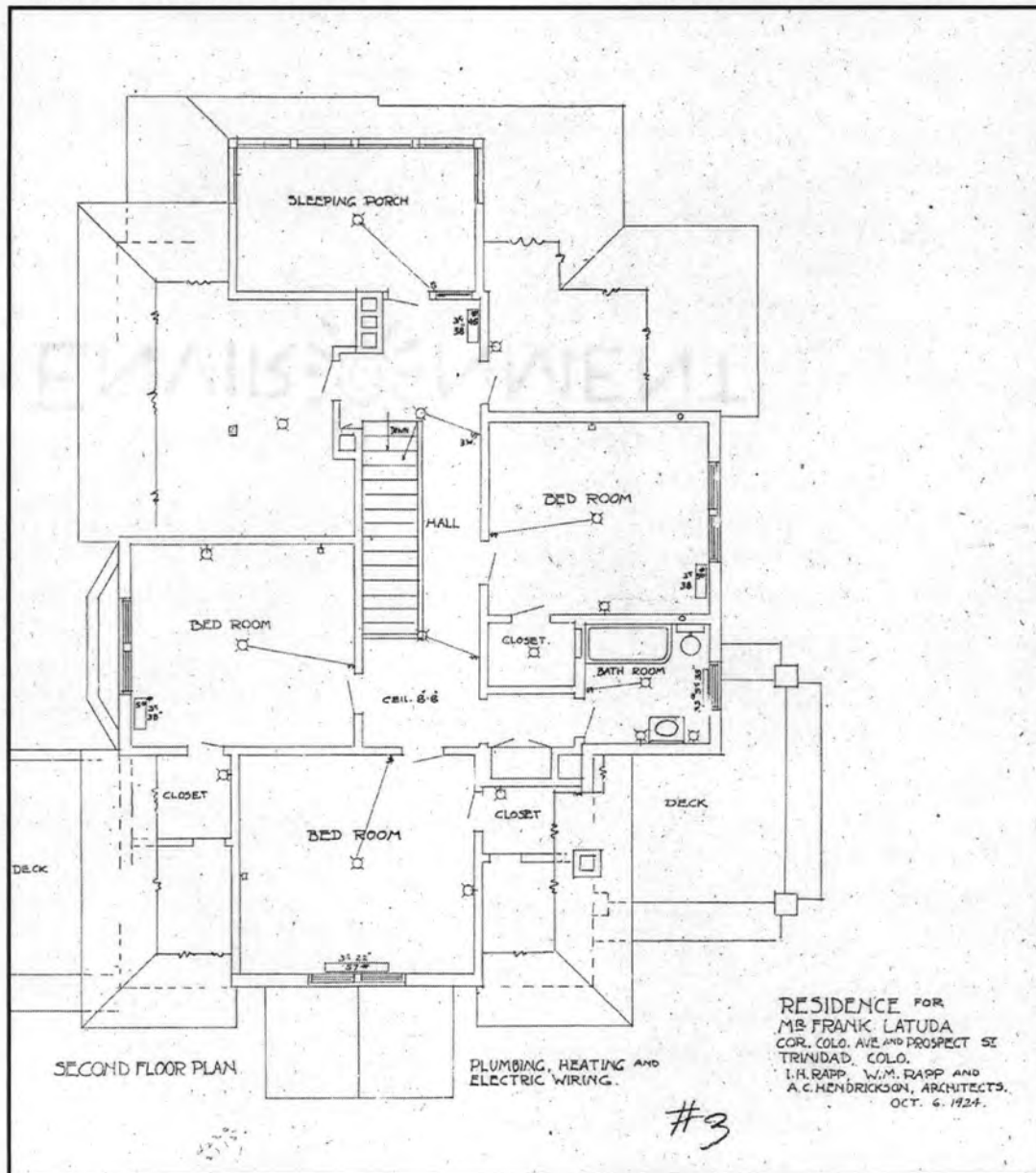
## Floor Plan – First Floor



H14

**National Register of Historic Places  
Continuation Sheet****United States Department of the Interior  
National Park Service**

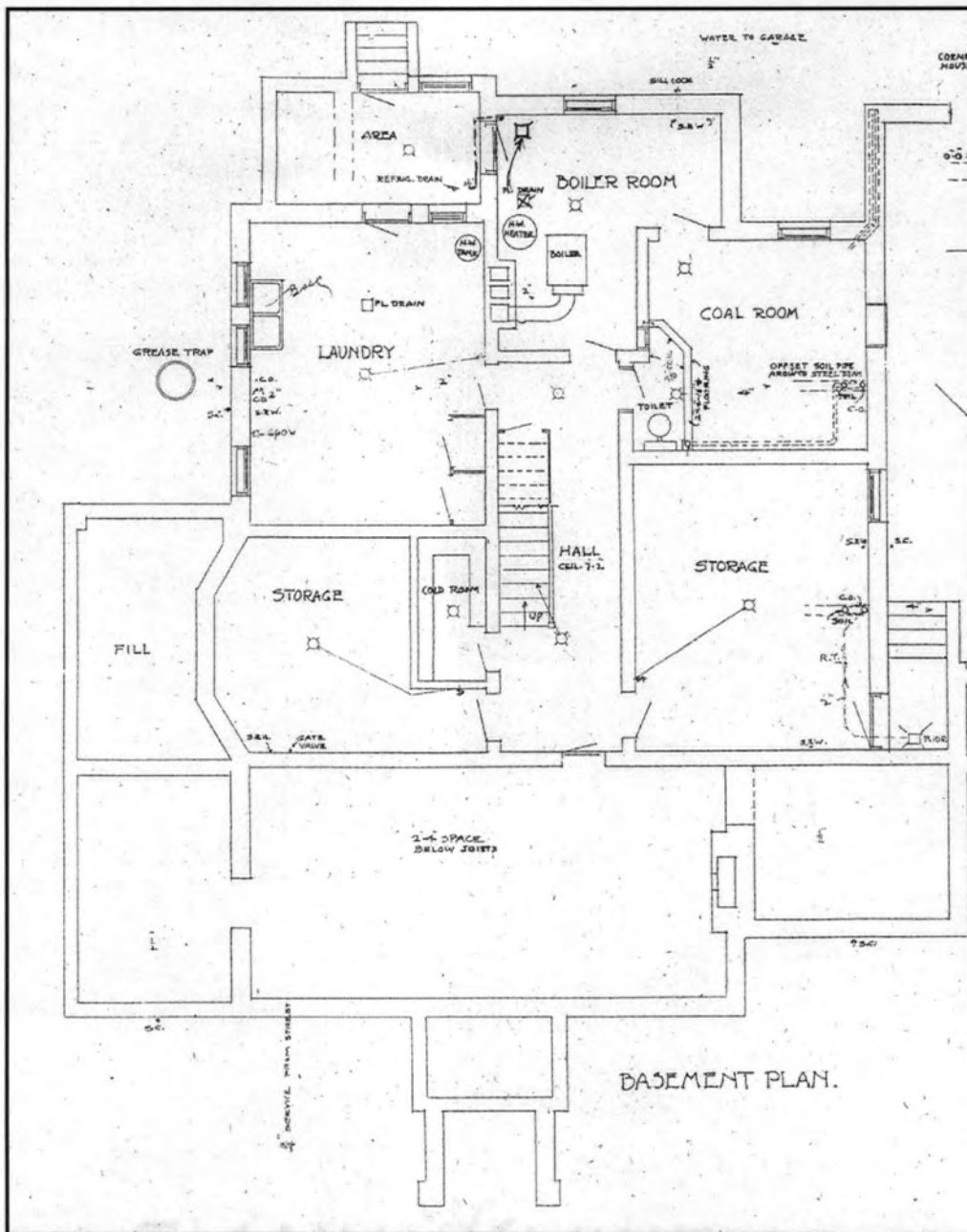
Latuda, Frank, House, Las Animas County, Colorado

Section number \_\_\_\_ Page 35**Floor Plan - Second Floor**

H15

**National Register of Historic Places  
Continuation Sheet****United States Department of the Interior  
National Park Service**

Latuda, Frank, House, Las Animas County, Colorado

Section number \_\_\_\_ Page 36**Floor Plan – Basement**

H16



UNITED STATES DEPARTMENT OF THE INTERIOR  
NATIONAL PARK SERVICE

NATIONAL REGISTER OF HISTORIC PLACES  
EVALUATION/RETURN SHEET

REQUESTED ACTION: NOMINATION

PROPERTY Latuda, Frank, House  
NAME:

MULTIPLE  
NAME:

STATE & COUNTY: COLORADO, Las Animas

DATE RECEIVED: 12/18/09 DATE OF PENDING LIST: 1/13/10  
DATE OF 16TH DAY: 1/28/10 DATE OF 45TH DAY: 2/01/10  
DATE OF WEEKLY LIST:

REFERENCE NUMBER: 09001275

REASONS FOR REVIEW:

APPEAL: N DATA PROBLEM: N LANDSCAPE: N LESS THAN 50 YEARS: N  
OTHER: N PDIL: N PERIOD: N PROGRAM UNAPPROVED: N  
REQUEST: N SAMPLE: N SLR DRAFT: N NATIONAL: N

COMMENT WAIVER: N

☒ ACCEPT ☐ RETURN ☐ REJECT 1.27.10 DATE

ABSTRACT/SUMMARY COMMENTS:

Entered in  
The National Register  
of  
Historic Places

RECOM./CRITERIA \_\_\_\_\_

REVIEWER \_\_\_\_\_ DISCIPLINE \_\_\_\_\_

TELEPHONE \_\_\_\_\_ DATE \_\_\_\_\_

DOCUMENTATION see attached comments Y/N see attached SLR Y/N

If a nomination is returned to the nominating authority, the nomination is no longer under consideration by the NPS.



(01)

Frank Latuda House

5LA. 12217

Las Animas County, Colorado





(02)

Frank Latuda House

5LA. 12217

Las Animas County, Colorado





03

Frank Latuda House

5LA. 12217

Las Animas County, Colorado



(04)

Frank Latuda House

5LA. 12217

Las Animas County, Colorado





(05)

Frank Latuda House

SLA. 12217

Las Animas County,

Colorado



(06)

Frank Latuda House

5LA. 12217

Las Animas County, Colorado





07

Frank Latuda House

5LA. 12217

Las Animas County, Colorado



08

Frank Latuda House

SLA. 12217

Las Animas County, Colorado





(09)

Frank Latuda House

5LA. 12217

Las Animas County, Colorado



⑩

Frank Latuda House

5LA. 12217

Las Animas County, Colorado





⑪

Frank Latuda House

5LA. 12217

Las Animas County, Colorado



12

Frank Latuda House

5LA.12217

Las Animas County, Colorado





13

Frank Latuda House

5LA. 12217

Las Animas County, Colorado



14

Frank Latuda House

5LA. 12217

Las Animas County, Colorado



(15)

Frank Latuda House

5LA. 12217

Las Animas County, Colorado





(16)

Frank Latuda House

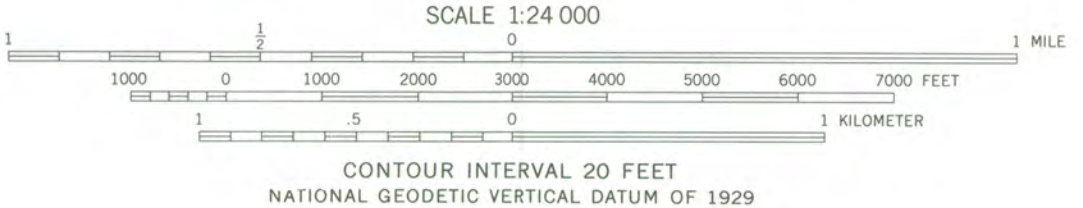
5LA. 12217

Las Animas County, Colorado

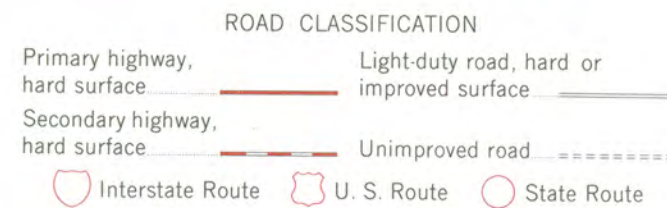




Revisions shown in purple compiled from aerial photographs taken 1977 and other source data. This information not field checked. Map edited 1979



Areas covered by dashed light-purple pattern  
are subject to inundation to 6258 feet



TRINIDAD WEST, COLO  
(FORMERLY TRINIDAD)  
N3707.5-W10430/7.5  
1951  
PHOTOREVISED 1979  
DMA 5068 II NE-SERIES V877





OFFICE of ARCHAEOLOGY and HISTORIC PRESERVATION



December 9, 2009

Dr. Janet Snyder Matthews  
Keeper of the National Register  
National Register of Historic Places  
1201 Eye Street, N.W. 8<sup>th</sup> Floor (MS 2280)  
Washington, D.C. 20005-5905

Dear Dr. Matthews:

We are pleased to submit for your review the enclosed National Register of Historic Places nomination for the Frank Latuda House, Las Animas County, Colorado (5LA.12217).

The State Review Board reviewed the nomination at its meeting on November 20, 2009. The board voted unanimously to recommend to the State Historic Preservation Officer that the property met the criteria for listing in the National Register.

We look forward to the formal listing of this property. If you have any questions, please do not hesitate to contact me by phone at 303-866-4684 or by e-mail at [heather.peterson@chs.state.co.us](mailto:heather.peterson@chs.state.co.us).

Sincerely,

Heather Peterson  
National & State Register Historian  
Office of Archaeology and Historic Preservation  
Colorado Historical Society  
225 E. 16th Ave., #950  
Denver, Colorado 80203  
(303) 866-4684  
(303) 866-2041 (fax)  
[heather.peterson@chs.state.co.us](mailto:heather.peterson@chs.state.co.us)

Enclosures  
Registration forms  
USGS map  
Photographs  
CD-R