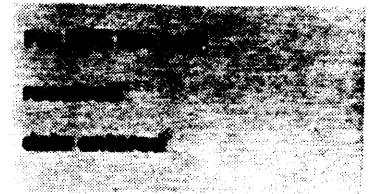


United States Department of the Interior  
National Park Service

National Register of Historic Places  
Inventory—Nomination Form



Continuation sheet

Item number

Page

Multiple Resource Area  
Thematic Group

dnr-11

Name Downtown Birmingham Historic District - Boundary Increase  
State Alabama

Nomination/Type of Review

1. Boundary Increase

Entered in the  
National Register

for Keeper

Date/Signature

Helene Byrd 2/21/85

Attest

2.

Keeper

Attest

3.

Keeper

Attest

4.

Keeper

Attest

5.

Keeper

Attest

6.

Keeper

Attest

7.

Keeper

Attest

8.

Keeper

Attest

9.

Keeper

Attest

10.

Keeper

Attest

FHR-8-300A  
(11/78)

UNITED STATES DEPARTMENT OF THE INTERIOR  
HERITAGE CONSERVATION AND RECREATION SERVICE

**NATIONAL REGISTER OF HISTORIC PLACES  
INVENTORY -- NOMINATION FORM**

FOR HCRS USE ONLY
RECEIVED 1/23/85
DATE ENTERED

CONTINUATION SHEET

ITEM NUMBER 2

PAGE 1

2000 - 2400 Blocks 2nd Avenue North, 2000 and part of 1900 Block 3rd Avenue North,  
200 Block 20th Street, part of 100, 200 Blocks of 21st, 22nd, 23rd and 24th Streets  
and part of 300 Blocks of 20th and 21st Streets.

UNITED STATES DEPARTMENT OF THE INTERIOR  
HERITAGE CONSERVATION AND RECREATION SERVICE

**NATIONAL REGISTER OF HISTORIC PLACES  
INVENTORY -- NOMINATION FORM**

FOR HCRS USE ONLY

RECEIVED

DATE ENTERED

1/23/85

CONTINUATION SHEET

ITEM NUMBER 10

PAGE 1

Acreage c. 8.7

New UTM's

- A. 16 / 518600 / 3708640
- B. 16 / 518660 / 3708540
- C. 16 / 518000 / 3708180
- D. 16 / 517930 / 3708240
- E. 16 / 517880 / 3708300
- F. 16 / 517960 / 3708480
- G. 16 / 518800 / 3708510

Verbal boundary description

See red line on attached plat map.

The Downtown Birmingham Historic District is being enlarged to include the following two properties, which are located on the border of the district:

102. Commercial Building (now Jefferson Land Title Service Co., Inc.) 312-322 21st Street North: c. 1908; 1-story brick with large corner lighted marquee which projects over the sidewalk; decorative frieze, multiple bays. Building by one of Birmingham's most prominent industrialist/developers, William A. Walker.
104. Rialto Theatre, 1923 Third Avenue: 1916; 3-story brick with intricate brickwork, iron grill work, original multi-paned windows. Peaked roof and proportionately sized arches comprise fine alternative to a cornice. Originally the Bonita moving picture house, then the Rialto Theatre up until the Depression.

Structures are located on the attached map of the district, showing the relationship of each to the original district.

*Roughly bounded by 1st and  
4th Ave; 20th & 25th Sts.*

1. Contributing Properties

SEP 18 1984

- 1 Bromberg's, SE corner 20th Street & 2nd Avenue North: 1946; Miller, Martin and Lewis; International style; 5 stories; limestone and marble; the finest sample of the International style in Birmingham.
- 4 Burger Dry Goods Building (Conwell Building), 2015 2nd Avenue North: 1906; Commercial style; 4 stories; brick and terra cotta; terra cotta ornament around windows and cartouche.
- 7 Drennen Building, 2021 2nd Avenue North: c.1895; Commercial style; 3 stories; brick; recessed bay windows on second floor, fine brickwork, classical details.
- 8 Cayce Building, 2025-27 2nd Avenue North: 1880; Commercial storefront style; 2 stories; brick.
- 9 Wilson Building, 2027 2nd Avenue North: 1880; Victorian Commercial storefront; 2 stories; brick; window arcade & brick cornice treatment; one of the oldest and most intact buildings in the district.
- 10 Dewberry Drugs, SW corner 2nd Avenue & 21st Street North: by 1880; Victorian Commercial storefront; 2 stories; brick; window arcade and brick cornice treatment; possibly the oldest building in the district.
- 11 Phenix Insurance Building (Rex Shoe Repair), 118 21st Street North: possibly 1884; Victorian Commercial storefront; 2 stories; brick; Phoenix has relief sculpture and brick cornice treatment.
- 13 First National Bank-Frank Nelson Building, NE corner 2nd Avenue & 20th Street North: 1903; William C. Weston; Chicago School Skyscraper style; 10 stories; brick and terra cotta; an important local interpretation of the Chicago School Skyscraper, was the third steel frame skyscraper in Birmingham.
- 14 Singer Building (Guaranty Savings & Loan Association), 2008 2nd Avenue North: 1928; Warren, Knight & Davis; Renaissance Revival style; 2 stories; limestone; Palladian window, finely laid ashlar masonry and balustrade that caps roofline.
- 17 The Fair Variety Store (Ace Pawn Shop), 2020 2nd Avenue North: c.1890; Commercial storefront style; 2 stories; brick; cast iron frame around 1st story; brick quoining, arched windows and decorative brick treatment above windows.
- 19 Jefferson County Savings Bank Building (City Federal Building), NW corner 2nd Avenue & 21st Street North: 1913; William Weston with John Davis, Eugene Knight; Beaux Arts Skyscraper style; 26 stories; terra cotta and granite; classical columns and pilasters, elaborate cornices, use of marble and glazed terra cotta; was the last and grandest of Birmingham's early skyscrapers, for over 50 years the tallest building in the skyline.
- 20 Harris Building (Smith Print & Copy Center), 115 21st Street North: c.1886; Victorian commercial style; 3 stories; brick; round and segmental arch windows, recessed twisted colonnettes, corbelled cornice treatment.

1. Contributing Properties (cont.)

- 21 Florentine Building, SE corner 2nd Avenue & 21st Street North: c.1927; D. O. Whilldin; Renaissance Revival style; 2 stories; terra cotta and marble; columns, window arcade at 2nd floor, bas relief sculpture; an architectural landmark noteworthy for its skillful interpretation of Venetian Renaissance motifs.
- 22 Denechaud Building (People's Loan Company), 2107 2nd Avenue North: c.1887; Victorian commercial style; 3 stories; brick; decorative hood molds and prominent corbelled cornice with blind arches.
- 24 Peter Zinszer's Mammoth Furniture House (Beard Furniture), 2117-19 2nd Avenue North: 1888; Victorian commercial style; 3 stories; cast iron; classical details, Queen Anne motif windows in the transoms; a rare (one of only two) and excellent example of cast-iron-front architecture in the city.
- 25 Daniels Building (Spencer Furniture), 2121 2nd Avenue North: 1888; Victorian commercial style; 4 stories; brick and cast iron; striated brick and stone wall treatment, window arrangement, pressed metal spandrels, elaborate cornice with Greek crosses; the largest Victorian building in the city and possibly the oldest cast iron frame building in Birmingham
- 26 Commercial building (New York Pawn Shop), 2125 2nd Avenue North: c.1918; Commercial storefront style; 2 stories; brick.
- 27 Yielding's, SW corner 2nd Avenue & 22nd Street North: 1911; Miller, Martin & Lewis; Commercial style; 3 stories; brick; ornamental brickwork, Roman grill vent covers, heavy massive cornice with classical detail, fine brickwork; an excellent example of the functional commercial style of the early 20th century and built for the oldest and in continuous operation retail establishment in Birmingham.
- 28 Commercial building (Anco Furniture,) SE corner 2nd Avenue & 22nd Street North: c.1914; Wheelock & Wheelock; Commercial style; 4 stories; brick & terra cotta; ornamental brickwork, marble & terra cotta spandrels, stone caps at roofline.
- 29 Hastings Building (AAA Furniture), 2205 2nd Avenue North: c.1917; Commercial style; 4 stories; brick; rope cornice over windows.
- 30 Commercial building, 2207 2nd Avenue North: c.1921; Commercial storefront style; 3 stories; brick.
- 31 Green-Bragan Building (Najjar's Bargain Center), 2209-11 2nd Avenue North: c.1911; Commercial style; 2 stories; brick; intact transom lights at ground floor level, corbelled brick cornice treatment.
- 33 Rhodes-Carroll Building (Standard Furniture-Crow Furniture), 2217-19-21 2nd Avenue North: c.1913; Commercial style; 3 stories; brick; inset brick panels in spandrels and at cornice line.
- 34 William S. Brown Mercantile Building (Harold's Rental Return & Used Furniture Sales), 2223-2225 2nd Avenue North: c.1905; Commercial style; 3 stories; brick; cast iron brackets and cornice above 1st and 3rd floors, stone lintels and sills, Roman grill vents; an excellent example of the early 20th-century expression of Beaux Arts motifs in commercial architecture.

Contributing Properties (cont.)

- 35 Commercial building (Harold's Sales & Furniture Leasing Co.), 2227 2nd Avenue North: c.1922; Commercial style, 3 stories; brick; stone lintels and sills.
- 36 Commercial building (Cameron Furniture), 2231-33 2nd Avenue North: c.1916; Commercial style; 1 story; brick; stone window frames, original window treatment intact, stone cap at roofline.
- 37 Commercial building (Waters Building), 209 & 211 22nd Street North: 1888; Victorian Commercial style; 3 stories; brick; the finest remaining of the combination retail-residential buildings that appeared during the city's first major boom in the late 1880s.
- 38 Commercial building (Johnson's Tailors), NE corner 2nd Avenue & 22nd Street North: c.1904, 1908; Commercial style; 1 story; brick; carved limestone.
- 39 Commercial building (United Jewelry Co.), 2204 2nd Avenue North: possibly 1908; Commercial style; 1 story; brick; polychromed brick pattern.
- 40 Commercial building, 2206 2nd Avenue North: possibly 1902, refaced 1920s; Commercial style; 2 stories; brick (refaced with stucco and Carrara glass); relieved piers and bull's-eye frieze at cornice line.
- 42 Commercial building, 2210 2nd Avenue North: 1907; Commercial style; 2 stories; brick; fine brickwork, pressed metal cornices with running dog frieze, segmented arch window opening, pressed metal brackets and cartouche; a particularly intact example of the Beaux Arts influence on early 20th-century commercial architecture.
- 43 Gingoold Building, 2212 2nd Avenue North: c.1904; Commercial style; 2 stories; brick; steel beam lintel above ground floor entry; ornamental brickwork on ground-level piers, above second-story windows and at cornice line.
- 44 Taylor Carriage Company Building (Lucas Paints), 2214 2nd Avenue North: possibly 1905; Commercial style; 3 stories; brick; limestone sills, unique window treatment on 2nd and 3rd floors, dogtooth corbelling at cornice line.
- 45 Commercial building (E.L. Klinner Furniture Co.), 2216 2nd Avenue North: c.1915; Commercial style; 3 stories; brick; pressed metal cornice and downspouts and ornamental brickwork with stone accents, window treatment 2nd and 3rd floor.
- 46 Commercial building (Klinner Furniture), 2218 2nd Avenue North: c.1906; Commercial style; 2 stories; brick; transoms above 1st floor, corbelled brick at cornice line with Dutch colonial stone cap at roofline.
- 48 Commercial building (Grundy's Music Room), 208 23rd Street North: c.1920; Art Moderne style; 2 stories; brick; polychromed glaze on brick, rounded glass brick windows; an excellent example of a modest building's successful incorporation of Art Moderne style features.
- 49 Commercial building (Baldone Tailors), SE corner 2nd Avenue North & 23rd Street North: c.1915; Commercial style; 2 stories; brick; grouped segmented arches over windows, beveled corner entrance.
- 52 Commercial building (Davis Furniture & Salvage), 2311 2nd Avenue North: c.1896; Victorian Commercial style; 2 stories; brick; arched windows with stone keystones, ornamental brickwork.

1. Contributing Properties (cont)

- 53 S. F. Teague Building (Alabama Berman Mercantile Co.), 2317-15 2nd Avenue North: c.1904; Commercial style; 2 stories; brick; cast iron columns 1st floor, ornamental brickwork above 2nd floor windows.
- 54 Commercial building (Alabama Berman Mercantile Co.), 2317-19 2nd Avenue North: c.1904; Commercial style; 2 stories; brick; cast iron columns ground floor, segmental headed windows 2nd floor, brick corbelling and cornice line.
- 55 Commercial building (Alabama Berman Mercantile Co.), 2321-23 2nd Avenue North: c.1888; Commercial style; 2 stories; brick; cast iron column ground floor, round-headed recessed windows and dog tooth brick cornice.
- 56 Blackwood-Bentley Building (2nd Time Around), 2325-27 2nd Avenue North: c.1910; possibly William C. Weston; Commercial style; 2 stories; brick; pressed metal cornice with heavy brackets; one of the only glazed brick facades in the city.
- 57 Commercial building (Jack's Auton Supply), SW corner 2nd Avenue & 24th Street North: c.1904; Commercial style; 2 stories; brick; brick corbelling along cornice line; decorated cast iron lintels above ground floor windows.
- 58 Commercial building (The Entertainer's Club & Iron Workers Shopmen Local Union No. 539), 112-14 24th Street North: c.1910; Commercial style; 2 stories; brick; quoining in the ground floor piers and corbelling at cornice line; stone caps and projecting piers at roofline; the articulation of the facade to include a stair hall to the second floor.
- 60 Kreulhaus-Steele Building (Chicago Pawn Shop), 2306 2nd Avenue North: c.1910; Commercial style; 2 stories; brick; stone inset ornament and stone caps at the crenelated roofline.
- 61 Killian Building (Seeds 4 Antiques), 2308 2nd Avenue North: c.1897; Commercial style; 2 stories; brick.
- 62 Commercial building (Beard's Government Surplus), 2310 2nd Avenue North: c.1910; Commercial style; 1 story; brick; two bay.
- 63 Commercial building (Shepherd's Furniture & FDSK German Club, 2312-14-18 2nd Avenue North: c.1918; Commercial style; 1 story; brick; four-bay, recessed panels with limestone inlays; dentilled cornice treatment.
- 64 Commercial building, 2320-32 2nd Avenue North: c.1904; Commercial style; 1 story; brick; 8-bay; pressed metal cornice.
- 65 Commercial building (Joyce Jewelry), 208-210 24th Street North: c.1920; Commercial style; 2 story; brick.
- 66 Birmingham Fire Station No.4, 214 24th Street North: 1926; Renaissance Revival style; 2 story; brick & terra cotta; terra cotta trim around door, arcade, cooper cornice & terra cotta tile roof; unique for being a work of quality design for a utilitarian building.
- 67 Wright-Acton Building, SE corner 2nd Avenue and 24th Street North: c.1913; Commercial style; 2 stories; brick; ornamental brickwork at cornice line, window treatment.

1. Contributing Properties (cont.)

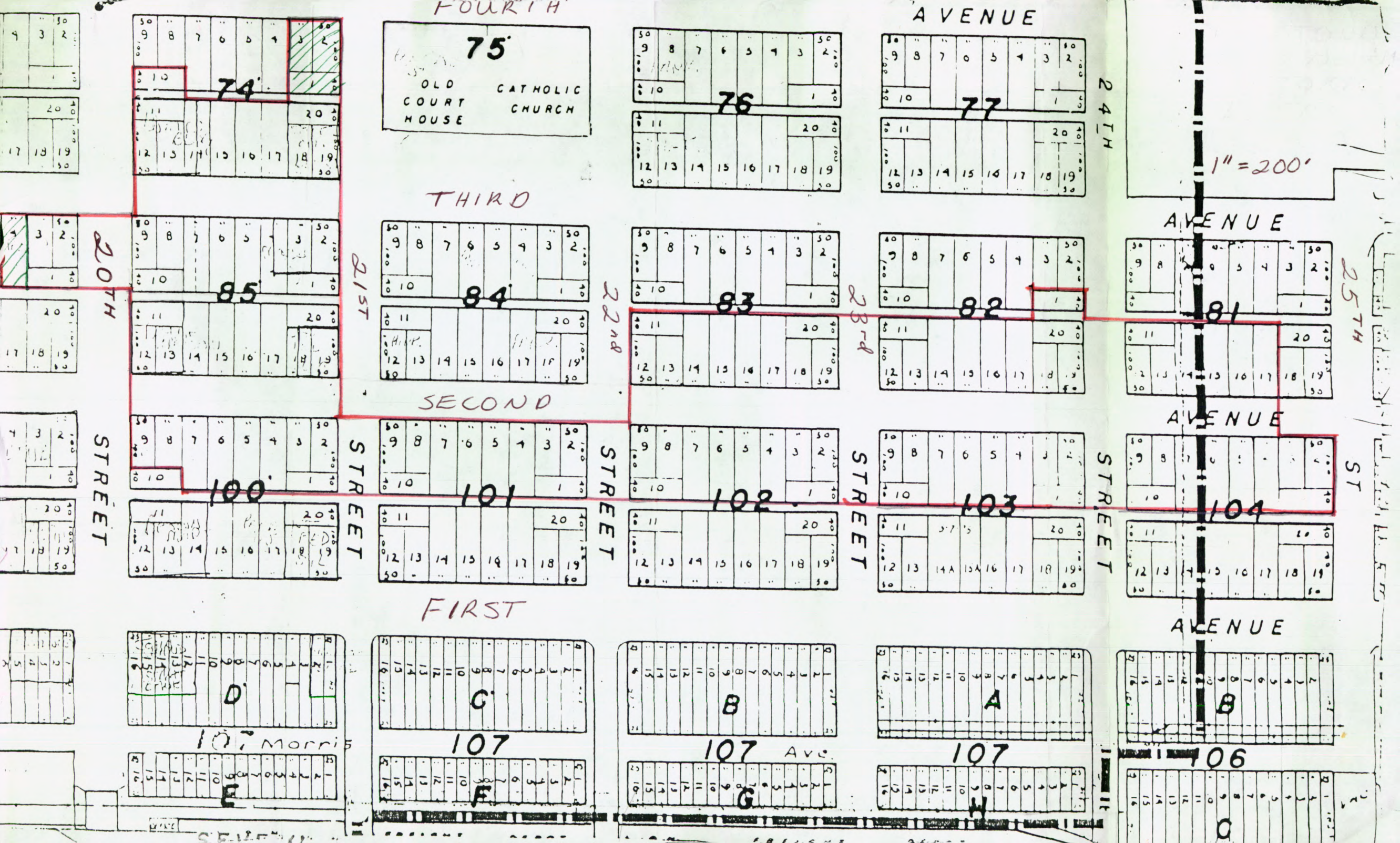
- 68 Ferguson Building (Geier Antiques), 2407 2nd Avenue North: c. 1911; Commercial style; 2 stories; brick; ornamental brickwork and limestone inlay.
- 69 Commercial building (Grier Antiques), 2409 2nd Avenue North: c.1908; Commercial style; 2 stories; brick; brick corbelling above 2nd story windows and at cornice lines.
- 70 Commercial building (Massey's Corral), 2421 2nd Avenue North: by 1910; Commercial style; 2 stories; brick; small-paned transom windows and tall 2nd story windows and tall 2nd story windows with segmental arch heads, brick corbelling on cornice line.
- 71 Commercial building (J. T. Massey Mercantile Co.), 2419 2nd Avenue North: c.1907; Commercial style; 2 stories; brick; multi-paned windows above 1st floor, pressed metal cornice, stone lintels and sills at 2nd floor, brick corbelling at cornice line, stone cap at roofline.
- 72 Vandergrift Building (Massey's Corral), 2423 2nd Avenue North: c.1908; Commercial style; 2 stories; brick; stone lintels, 2nd floor large multi-paned windows, brick corbelling at cornice line, Dutch Colonial gable motif at roofline.
- 73 Hickman Cotton Warehouse (J. T. Massey), 2417 2nd Avenue North: c. 1895; Commercial style; 2 stories; brick.
- 74 Commercial building (Oxford Galleries), 209-211 24th Street North: c.1928; Commercial style; 2 stories; brick.
- 76 Commercial building (Oxford Galleries), 2412 2nd Avenue North: possibly 1912; Commercial style; 1 story; 2 bay; brick; stone caps at roofline.
- 77 Commercial building (Oxford Galleries), 2416 2nd Avenue North: c. 1906; Commercial style; 3 stories; brick; limestone and Carrara glass refacing.
- 78 Commercial building (Oxford Galleries), 2416 2nd Avenue North: c.1906; Commercial style; 1 story; brick.
- 81 20th Street Realty Block (Shoney's Restaurant, Bon Ton Hatters Shoe Repair & Half Price Store), SE corner 3rd Avenue & 20th Street North: 1890s, refaced in 1927; Miller, Martin and Lewis; Art Deco style; 3 stories; limestone; pressed metal spandrels, bas relief sculpture at cornice line, and capping piers and mullions, well integrated fire escapes.
- 82 Commercial building (McKinstry's Flowers), 2007 3rd Avenue North: c.1904; refaced c.1927; possibly Miller, Martin & Lewis; Art Deco style; 3 stories; limestone; bas relief sculpture capping piers, well integrated fire escapes, strong relationship to 20th Street Realty Block.
- 83 Mustin Building, 2009 3rd Avenue North: c.1889; Victorian commercial style; 3 stories; brick; recessed bays of arched windows, terra cotta ornament (egg & dart molding).
- 84 Commercial building (Cokesbury Bookstore), 2011 3rd Avenue North: c.1889; Victorian commercial style; 3 stories; brick; terra cotta panels and molding.
- 86 Drennen Building (Henderson's Fine Arts), 2015 3rd Avenue North: c.1889; Victorian commercial style; 3 stories; brick; cornice lines which use molded terra cotta in circular, dog tooth and classical motifs.

1. Contributing Properties (cont.)

- 87 Fubank Building (Spencer Furniture), 2017 3rd Avenue North: c.1889; Victorian commercial style; 3 stories; brick.
- 88 Gilreath Building (Marks-Fitzgerald Moderna Annex), 2019 3rd Avenue North: 1891; Victorian commercial style; 3 stories; brick; dentilled cornice and parapet relieved with narrow patterned terra cotta insets.
- 89 O'Neill Building (Marks Fitzgerald Furniture Co.), 2023 3rd Avenue North: c.1890-96; Victorian commercial style; 3 stories; brick; ornamental brickwork, corbelling, diamond patterns, dentils, frieze & recessed rectangles.
- 90 Bankers Bond-Massey Building, SW corner 3rd Avenue & 21st Street North: 1925; William Leslie Welton; Spanish Revival Skyscraper style; 10 stories; brick and terra cotta; unusual brick colors and patterns, elaborate twisted columns, false balconies and three dimensional terra cotta ribbing, an elaborately ornamented Spanish Revival skyscraper that is an excellent expression of 1920s taste for elaborate and baroque expressions in emulation of the decade's prosperity.
- 91 Commercial building (Friar Tuck's Chicken), 313 20th Street North: c. 1885; Victorian commercial style; 2 stories; brick; pressed metal hoods over upper windows, cornice; One of the oldest buildings in downtown and the only remaining 1880s building on 20th Street, Birmingham's main axis.
- 94 Watts Building (Molton-Allen & Williams), NE corner 3rd Avenue & 20th Street North: 1928; Warren, Knight & Davis; Art Deco style; 16 stories; brick, terra cotta, & granite; gabled roofline with three dimensional sculpture, streamlined window articulation and grand entrance and lobby; one of the most distinctive elements in the city skyline and the most imaginative interpretation of the Art Deco style in the city.
- 97 Birmingham Paint & Glass Company Building (Hood-McPherson & Standard Furniture), 2014 & part of 2020 3rd Avenue North: c.1904; Commercial style; 4 stories; brick; arched windows with stone keystones and square windows with stone lintels, Ionic capitals, brick cornice treatment.
- 98 Oster Brothers Building (Standard Furniture), 2020 3rd Avenue North: c.1900; Commercial style; 4 stories; brick; two-story window arcade with fanlights and fleur-de-lis motif, semi-circular opening with wrought iron grill, cylindrical rusticated buttresses support central parapet.
- 99 Massey Business College, 2024-26 3rd Avenue North: 1904; William C. Weston; Beaux Arts Commercial style; 3 stories; brick; fine brickwork, quoining and limestone carving surrounding entrance, classical capitals, pressed metal cornice supporting flagpole.
- 100 Title Guaranty & Trust Co. Building (Title Building), NW corner 3rd Avenue & 21st Street North: 1903; William C. Weston; Chicago School Skyscraper style; 9 stories; brick and terra cotta; fine brickwork, using quoining, imitation keystones and cornice lines above 1st, 2nd and 8th stories. The second skyscraper built in Birmingham, it is the finest expression of the Chicago School style in the city.
- 101 Alabama State Land Building (Electric Blue Printing Co.), 310 21st Street North: c.1911; Chicago School influence style; 5 stories; brick; three pointed arches of graduated stone and brick that enframed fanlights, glazing at ground level.

1. Contributing Properties (cont.).

- 102 Commercial Building (now Jefferson Land Title Services Co., Inc.), 312-322 21st Street North: c.1908; 1 story brick with large corner lighted marquee which projects over the sidewalk; decorative frieze, multiple bays. Built by one of Birmingham's most prominent industrialist/developers, William A. Walker.
- 103 Farley Building, SW corner 3rd Avenue & 20th Street North: 1909; H. D. Breeding; Chicago School style skyscraper; 9 stories; brick; its pilasters of red brick rise from a quoined base to monumental arches with keystones, broken at each floor by the horizontal emphasis of the gold brick spandrels and ranges of Chicago-style windows, while making a rhythmic repetition across the facade. The fine brickwork and high contrast polychromy add a visual dimension to the building design. A flat, deep cornice was removed in a 1960s remodeling.
- 104 Rialto Theatre (now Famous Shoe Bar), 1923 Third Avenue: 1916; 3-story brick with intricate brickwork, iron grill work, original multi-paned windows. Peaked roof and proportionately sized arches comprise fine alternative to the cornice. Originally the Bonita moving picture house, then the Rialto Theatre up until the Depression.



FOURTH

AVENUE

75  
OLD CATHOLIC COURT HOUSE

76

77

THIRD

84

83

82

81

SECOND

101

102

103

104

FIRST

107  
C  
F

107 Ave  
B  
G

107  
A  
H

106  
B  
C

1" = 200'

24TH

25TH

ST

20TH

STREET

21ST

STREET

22ND

STREET

23RD

STREET

STREET



DOWNTOWN BIRMINGHAM HISTORIC DISTRICT