



224

United States Department of the Interior
National Park Service

National Register of Historic Places Registration Form

This form is for use in nominating or requesting determinations for individual properties and districts. See instructions in *How to Complete the National Register of Historic Places Registration Form* (National Register Bulletin 16A). Complete each item by marking "x" in the appropriate box or by entering the information requested. If an item does not apply to the property being documented, enter "N/A" for "not applicable." For functions, architectural classification, materials, and areas of significance, enter only categories and subcategories from the instructions. Place additional entries and narrative items on continuation sheets (NPS Form 10-900a). Use a typewriter, word processor, or computer to complete all items.

1. Name of Property

historic name Bangall Post Office
other names/site number _____

2. Location

street & number 105 Hunns Lake Road [] not for publication
city or town Bangall [] vicinity
state New York code NY county Dutchess code 027 zip code 12506

3. State/Federal Agency Certification

As the designated authority under the National Historic Preservation Act, as amended, I hereby certify that this nomination [] request for determination of eligibility meets the documentation standards for registering properties in the National Register of Historic Places and meets the procedural and professional requirements as set forth in 36 CFR Part 60. In my opinion, the property meets [] does not meet the National Register criteria. I recommend that this property be considered significant [] nationally [] statewide locally. ([] see continuation sheet for additional comments.)

Ronald A. Purpurt
Signature of certifying official/Title

DJHPO

3/27/14
Date

New York State Office of Parks, Recreation & Historic Preservation
State or Federal agency and bureau

In my opinion, the property [] meets [] does not meet the National Register criteria. ([] see continuation sheet for additional comments.)

Signature of certifying official/Title

Date

State or Federal agency and bureau

4. National Park Service Certification

I hereby certify that the property is:

- entered in the National Register [] see continuation sheet
- [] determined eligible for the National Register [] see continuation sheet
- [] determined not eligible for the National Register
- [] removed from the National Register
- [] other (explain) _____

Signature of the Keeper

date of action

Edson H. Beall

5-19-14

Bangall Post Office

Name of Property

Dutchess County, New York

County and State

5. Classification

Ownership of Property

(check as many boxes as apply)

- private
- public-local
- public-State
- public-Federal

Category of Property

(Check only one box)

- building(s)
- district
- site
- structure
- object

Number of Resources within Property

(Do not include previously listed resources in the count)

Contributing	Noncontributing	
1	0	buildings
0	0	sites
0	0	structures
0	0	objects
1	0	TOTAL

Name of related multiple property listing

(Enter "N/A" if property is not part of a multiple property listing)

N/A

Number of contributing resources previously listed in the National Register

0

6. Function or Use

Historic Functions

(enter categories from instructions)

COMMERCE/TRADE/specialty store

GOVERNMENT/post office

Current Functions

(Enter categories from instructions)

GOVERNMENT/post office

RECREATION AND CULTURE/museum

7. Description

Architectural Classification

(Enter categories from instructions)

No style

Materials

(Enter categories from instructions)

foundation Stone

walls Wood

roof Metal

other

Narrative Description

(Describe the historic and current condition of the property on one or more continuation sheets)

8. Statement of Significance

Applicable National Register Criteria

(Mark "x" in one or more boxes for the criteria qualifying the property for National Register listing.)

- A** Property associated with events that have made a significant contribution to the broad patterns of our history.
- B** Property is associated with the lives of persons significant in our past.
- C** Property embodies the distinctive characteristics of a type, period, or method of construction or that represents the work of a master, or possesses high artistic values, or represents a significant and distinguishable entity whose components lack individual distinction.
- D** Property has yielded, or is likely to yield, information important in prehistory or history.

Criteria Considerations

(Mark "x" in all boxes that apply.)

- A** owned by a religious institution or used for religious purposes.
- B** removed from its original location
- C** a birthplace or grave
- D** a cemetery
- E** a reconstructed building, object, or structure
- F** a commemorative property
- G** less than 50 years of age or achieved significance within the past 50 years

Narrative Statement of Significance

(Explain the significance of the property on one or more continuation sheets.)

9. Major Bibliographical References

Bibliography

(Cite the books, articles, and other sources used in preparing this form on one or more continuation sheets.)

Previous documentation on file (NPS):

- preliminary determination of individual listing (36 CFR 67) has been requested.
- previously listed in the National Register
- previously determined eligible by the National Register
- designated a National Historic Landmark
- recorded by historic American Building Survey # _____
- recorded by Historic American Engineering Record # _____

Primary location of additional data:

- State Historic Preservation Office
- Other State agency
- Federal Agency
- Local Government
- University
- Other repository: _____

Areas of Significance:

(Enter categories from instructions)

Social History

Architecture

Period of Significance:

1915 - 1964

Significant Dates:

1915

Significant Person:

N/A

Cultural Affiliation:

N/A

Architect/Builder:

Harrie Knickerbocker

**United States Department of the Interior
National Park Service**

**National Register of Historic Places
Continuation Sheet**

Bangall Post Office

Name of Property

Dutchess, New York

County and State

Section 7 Page 1

Narrative Description of Property

The Bangall Post Office is located in the small hamlet of Bangall, Dutchess County, New York. Bangall is centrally located in the southern half of the town of Stanford, approximately one mile northeast of the hamlet of Stanfordville. The town, with its varying topography of rolling hills and valleys, is primarily a rural area located in the north-central portion of Dutchess County. Stanford is characterized by agricultural, single-family residential and vacant/unimproved land with a commercial/residential mix in the hamlets of Stanfordville and Bangall and along the Route 82 corridor, a main thoroughfare.

Centered on the intersection of Hunns Lake Road (east/west) and Millis Road from the north and Bangall-Amenia Road (Route 86) from the south/southwest, the core of Bangall features a cluster of residential and commercial properties. The Bangall Post Office occupies a small, 0.02-acre lot on the north side of Hunns Lake Road near its junction with Bangall-Amenia Road. Hunns Lake Creek – a tributary of Wappingers Creek – flows in a general southwest direction through Bangall, traversing just north of the post office. The former railroad depot, several residences, and a few commercial buildings - some converted to restaurants - remain intact. Several historic resources within the hamlet remain, some representing Bangall's nineteenth-century development.

Constructed in 1915, the post office is a small, one-story, rectangular wood-frame building (approximately 30 feet by 20 feet) that rests on a stone foundation and is surmounted by a gable roof with overhanging eaves, simple wide frieze and cornice. The building is oriented on a north-south axis with the façade facing south toward Hunns Lake Road. The roof is sheathed with standing-seam metal that wraps around and is nailed to the soffit end of the roof boards. The post office is sided with clapboard and features narrow corner boards. An exterior brick chimney, added at an unknown date, is located on the eave side toward the northwest corner of the building.

Entrance into the post office is through a single wooden paneled door with a fixed glass pane on the upper half. Framed by a simple wood surround, the door also features a letter slot and a contemporary door handle. The entry is approached by a one-story, almost full-width porch with shed roof that is supported by turned spindles and rests on raised stone slab foundation. The shed roof is also sheathed in standing-seam metal and has exposed rafters. Centrally displayed on the porch is the "U.S. Post Office, Bangall, N.Y. 12506" sign, and a mailbox placed on a raised stone slab is adjacent to the door.

**United States Department of the Interior
National Park Service**

**National Register of Historic Places
Continuation Sheet**

Section 7 Page 2

Bangall Post Office
Name of Property
Dutchess, New York
County and State

Windows on the east and west (side) elevations are symmetrical and denote the interior configuration (larger public space in the front and smaller private area for the postmaster in the back). Except for the rear elevation, windows are wood, two-over-two double-hung sash and are accented by operable wood shutters that retain their original hardware. Based on interior inspection, the double-hung windows appear to also retain their sash weights and cords (rope). Located high across the rear elevation are four small wood six-light single-sash hopper windows that light the interior. All windows openings feature simple wood frames.

On the interior, there are two major functional divisions. The front, public area, and the rear, private area, for the postmaster, are separated by a decorative wood partition that came from the old post office in Newburgh, New York. Installed when the Bangall Post Office was constructed in 1915, the partition contains 180 surplus post office boxes – numbers 451 through 630 – service windows, letter slot, and a single wooden paneled door at each end so the postmaster could have direct access not only to the open public area, but to the area behind the original store counter to service customers as well. Based on field inspection and a review of earlier photographs, some minor alterations are evident, specifically on the end of the partition that adjoins the store counter. The door surround - while similar in color and design to the paneled trim and beaded board featured on the partition – is simplified and was added at a later date. The difference is easier to interpret when viewed from the postmaster’s side of the partition. An interior photograph from *Dutchess County Post Offices*, published in 1983, also shows that the partition extended up to the ceiling. Because the extension up to the ceiling depicted in the photograph lacks the decorative elements of the main body of the partition, it appears that it was added post-installation and modified to fit the ceiling structure.

Overall, the interior of the post office retains several historic details and finishes from the period of significance. The walls are covered with metal panels fabricated to resemble board and batten siding. The cornice and ceiling are embossed tin – the cornice depicts a floral pattern and the ceiling features a diamond-shape pattern. The flooring, framed over a currently inaccessible crawl space, is nominal 6-inch tongue and groove softwood. All the windows are framed by the same paneled trim and rosette details found on the partition.

The front area of the post office features an original store counter and lower shelving with drawers against the side wall.¹ The front of the counter is clad in beaded board. According to the postmaster, the upper cabinets were installed in the 1990s to provide additional storage for the Stanford Historical Society’s collections. The upper cabinets have glass doors

¹ Over its history, the post office was also used as a specialty store, library, and storage for the Stanford Historical Society’s collections.

**United States Department of the Interior
National Park Service**

**National Register of Historic Places
Continuation Sheet**

Section 7 Page 3

Bangall Post Office
Name of Property
Dutchess, New York
County and State

and were designed and stained to complement the original shelving and store counter. Contemporary fluorescent light fixtures hang from the ceiling and electric baseboard vents provide heat to the building. While there is an exterior chimney, the postmaster does not know when it was constructed and no photographs were uncovered to determine an approximate date. On the interior the flue is plugged, but a photograph from *Dutchess County Post Offices* published in 1983 shows a pipe that would have connected from the flue plug down to the floor – perhaps to a woodstove.

The Bangall Post Office retains an outstanding level of integrity. The building retains its original central location in the hamlet at the junction of Hunns Lake Road and Bangall-Amenia Road. While the area on the south side of Hunns Lake Road changed over the years with the removal of the railroad tracks in the late 1930s and construction of Monument Park in place of a former hotel, a variety historic resource types are present within the hamlet to convey its historic setting. The building's form and massing remain intact. Minor alterations on the interior such as the lighting and addition of upper cabinets have not compromised its integrity as most of the finishes are consistent with early twentieth century trends; therefore, the post office retains integrity of design, materials and workmanship. It is clearly associated with an important theme in Bangall's history and, because of the qualities listed above, retains integrity of feeling; it can be clearly understood as an historic resource and is highly valued for that reason by the community.

**United States Department of the Interior
National Park Service**

**National Register of Historic Places
Continuation Sheet**

Section 8 Page 1

Bangall Post Office
Name of Property
Dutchess, New York
County and State

Statement of Significance:

The Bangall Post Office is significant under Criteria A and C for its role in the social and commercial development of Bangall and as an intact representative example of an early twentieth century mixed-use commercial building. Constructed in 1915 by Harrie Knickerbocker during his term as postmaster, the building originally served a dual purpose, incorporating a store and post office, two functions typically housed in buildings of this type. The partition with the postal boxes (numbered 451 through 630) and window dividing the private and public spaces was transferred from the former Newburgh post office in 1915. The building did not function as a general store; however, only items such as candy, cigars and dry goods were sold. In 1954, a community free library was established in the front area of the building, and later the space was used to store the Stanford Historical Society's collections. Despite this change in use, the building's primary function has and continues to be a post office; therefore, the period of significance extends to the 50-year mark to encompass the longest period of time associated with the primary function of the building. It was Harrie's daughter, Barbara Knickerbocker Beskind, who donated the Bangall Post Office to the Stanford Historical Society in 1973. While not designed or constructed by the federal government, some general characteristics expected to be found in a post office were incorporated, including the floor plan (public vs. private spaces), principal/main entrance, and its roadside location at a major intersection in the hamlet. The building retains a high level of integrity, with the functional divisions and period finishes present throughout. Owned by the Stanford Historical Society and leased by the United State Postal Service, the post office "represents an identity for that address area" and continues to serve the local community.²

Town of Stanford / Hamlet of Bangall

Located in the north-central portion of Dutchess County, Stanford was formed as a township in March 1793, having formerly been a part of the adjacent town of Washington. This part of rural Dutchess County includes land once contained within the Great or Lower Nine Partners Patent tract, granted to Caleb Heathcote and eight other speculators by the English Crown in May 1697. The tract, located just south of the slightly later Little Nine Partners Patent of 1706, was approximately ten miles in width and extended from the Hudson River east towards the disputed Oblong lands and Connecticut; it was divided into 36 lots, each composing approximately 3,400 acres, in addition to nine "water" lots that allowed each patentee river frontage. The land in this region was first settled in the decades preceding the American Revolution, mostly by New Englanders from Massachusetts, as well as some Long Islanders, with a substantial population of Quakers settling in this area in the later years of the eighteenth century. Throughout the nineteenth century Stanford was composed largely of farms with small pockets of development in hamlets such as Stanfordville and Bangall, both of

United States Department of the Interior
National Park Service

National Register of Historic Places
Continuation Sheet

Section 8 Page 2

Bangall Post Office

Name of Property

Dutchess, New York

County and State

which emerged as railroad stops during the nineteenth century and, as such, served as centers for goods and services for outlying farming families.

Based on a review of historic maps and articles published in *The Register Herald* - the local newspaper - by the late nineteenth century Bangall boasted a number of businesses such as an undertaker, shoemaker, wagon maker, meat market, general store, harness shop, and a hotel and restaurant.³ Prior to 1915, the post office was part of the general store – as typically found in rural communities. In addition, there was a schoolhouse (District No. 10), flour, feed and saw mill, grist mill, Methodist Church and two Baptist Churches. Early mills in Bangall used the waterpower of Hunns Lake Creek - a tributary of Wappinger creek - but the opening of a station for the Dutchess and Columbia Railroad gave the little settlement its major commercial lift, just as the opening of railroad stations did in many rural communities in the late nineteenth century.⁴

The Dutchess and Columbia Railroad (D&C), completed in 1869, was the first railroad to originate in Dutchess County. The tracks ran from Dutchess Junction (just south of Beacon, New York) in the southwest corner of the county, through Millbrook (central Dutchess County), to Millerton (northeast Dutchess County), and to the Connecticut state line to link with the Connecticut Western Railroad. The D&C Railroad passed through communities, including Hopewell Junction, Bangall, Pine Plains, and Copake.⁵ According to William P. McDermott, author of *Dutchess County Railroads*, the goal of the D&C Railroad, as well as other railroads that originated in the county, was to provide the shortest route from Pennsylvania to the New England states for the transportation of coal.⁶ On a local level, people traveled to other towns, went to school, shipped milk, and received supplies by train.⁷

Many railroad companies changed names as a result of bankruptcies and consolidations, but the routes remained the same. The turn of the twentieth century was a period of consolidation of the railways, and in 1876 the D&C Railroad was renamed the Newburgh, Dutchess and Connecticut Railroad (ND&C), which developed the nickname “Never Did and Can’t Run Right.” In 1905, the New Haven Railroad purchased the ND&C, but due to the increasing use of automobiles,

² Gene Lomoriello, “Bangall Post Office: a small kingdom,” *The Pine Plains Register-Herald*, October 19, 1989, 2.

³ Penny Loeb, “Stanford: a town of schools, mills, and farms in 1882,” *The Pine Plains Register-Herald*, December 30, 1982, 13.

⁴ Donald C. Spiers, comp., *Stanford Memories: A Compilation of Letters, Interviews, News Clippings, and Excerpted Articles* (Freeman: Pine Hill Press, Inc., 1998), 68.

⁵ Elinor C Beckwith, *The Town of Stanford in History: 180th Anniversary 1793-1973* (1973), 13.

⁶ William P. McDermott, *Dutchess County Railroads*, 11, accessed November 6, 2013. www.hudsonrivervalley.org.

⁷ Penny Loeb, “Stanford: a town of schools, mills, and farms in 1882,” *The Pine Plains Register-Herald*, December 30, 1982, 13.

United States Department of the Interior
National Park Service

National Register of Historic Places
Continuation Sheet

Section 8 Page 3

Bangall Post Office
Name of Property
Dutchess, New York
County and State

passenger and freight business on the remaining branch lines in Dutchess County continued to decline, and the New Haven Railroad abandoned most of the county's branch lines in the 1930s.⁸

The trains supplied one of Stanford's – Bangall included – major businesses: boarding houses. The town's summer population increased dramatically as people from New York City flocked by train for the weekend, a week, or even a summer to escape the heat and humidity.⁹ Almost every farmhouse took in summer guests and an example was included in *Stanford Memories*:

Egbert Hyatt. Farm house. Bangall Post Office one and three quarters miles. Accommodates 12. Adults \$5 per week, children, half price. Will convey guests from station without charge. A very healthy location, 450 feet above tide level. Table supplied with milk, butter, eggs, fruit and vegetables produced on premises. Special facilities for amateur photographers and natural science students. (Anson Road, Robert Adams).¹⁰

According to an article published in *The Register Herald*, owners of boarding houses advertised extensively, but some accommodations didn't live up to their ads.¹¹ Penny Loeb, editor of *The Register Herald*, interviewed life-long Stanford resident Stanley Willig, who indicated that some residents advertised in the New York City papers that their houses were closer than they actually were to the train depot. Per Willig, a story written in the New York papers, reported that a group of women had to walk a "great distance" to their boarding house. As suspected, they wanted their money back, but the owner took their luggage, locked it in a closet, and wouldn't give it back until the week was over.¹²

The popularity of the boarding house came and went with the railroads, which in Bangall ended in the late 1930s. The increased use and affordability of the automobile in the early to mid-twentieth century impacted other businesses and industries as well; mills and factories gave way to beef cattle, then dairying and now horse breeding and boarding. Stanford had, at one point, 15 school districts and one-room schools; young people who wanted more than a primary education went by train to high school in Poughkeepsie or, later, in Millbrook.¹³ Stanford district schools followed the state and national trends and consolidated with the Pine Plains Central School District in the mid-twentieth century. In Bangall, the First Baptist Church was converted into a private residence, but the Methodist Church is still active, as is the

⁸ William P. McDermott, *Dutchess County Railroads*, 49, accessed November 6, 2013. www.hudsonrivervalley.org.

⁹ Donald C. Spiers, comp., *Stanford Memories: A Compilation of Letters, Interviews, News Clippings, and Excerpted Articles* (Freeman: Pine Hill Press, Inc., 1998), 6.

¹⁰ *Ibid.*, 68.

¹¹ Penny Loeb, "Stanford: a town of schools, mills, and farms in 1882," *The Pine Plains Register-Herald*, December 30, 1982, 13.

¹² *Ibid.*

¹³ Donald C. Spiers, comp., *Stanford Memories: A Compilation of Letters, Interviews, News Clippings, and Excerpted Articles* (Freeman: Pine Hill Press, Inc., 1998), 7.

United States Department of the Interior
National Park Service

National Register of Historic Places
Continuation Sheet

Bangall Post Office

Name of Property

Dutchess, New York

County and State

Section 8 Page 4

Catholic Church, which has occupied the former Second Baptist Church since 1905. With the hamlet of Stanfordville, Bangall continues to serve as a center for commercial activity for the area, and today the hamlet retains a collection of nineteenth and early twentieth century residences, commercial buildings, and churches.

Bangall Post Office

The first post office in Bangall was established on August 8, 1851 with Alonzo Buel as the appointed postmaster. Early post offices were often located on the property of the postmaster or established in taverns or inns at crossroads. According to Elinor Beckwith's *The Town of Stanford in History*, several post offices were established in small communities throughout Stanford in the nineteenth century due in part to settlers having to walk or ride to the nearest location. In 1903, Rural Free Delivery covered Dutchess County and a number of post offices closed, including: McIntyre, Old Attlebury, Attlebury, Bear Market, Hulls Mills, Shunpike, and Lithgow.¹⁴ The post office in Bangall remained open.

Prior to the construction of the nominated building in 1915, Bangall's post office was located in a building today referred to as "Bullis Hall." Located on the south side of Hunns Lake Road at its junction with Millis Street, Bullis Hall was constructed in the 1830s as a residence for the Bullis family. Wings were added on over the years to accommodate the multiple uses of the building, which included various stores, post office, boarding house, theater, basketball court, and, later, apartments.¹⁵ John N. Bullis was appointed postmaster in 1861, followed by Thaddeus Knickerbocker in 1885. Thaddeus, who was also the town clerk in 1869, 1874, and 1876, operated a store in Bullis Hall and used wrapping paper from the Stanfordville Paper Mill to wrap parcels of tea, rice, and sugar.¹⁶ Many merchants served as postmasters not so much for the salary but for the customers it attracted to their stores. Based on a review of historic maps, the post office continued to operate out of Bullis Hall despite the change in appointed postmasters through the years.

It was Thaddeus's son, Harrie Knickerbocker, who built the nominated building during his term of office as postmaster in 1915 on the small piece of land he owned. Centrally located in the hamlet on the north side of Hunns Lake Road, the post office was constructed in a convenient location just west of the rail line and across the street from the train depot. According to the current postmaster and an article in *The Pine Plains Register Herald*, Harrie sold beautifully tinted postcards - made from photographs he took depicting local scenes - in the front area of the post office during his term as

¹⁴ Elinor C Beckwith, *The Town of Stanford in History: 180th Anniversary 1793-1973* (1973), 39.

¹⁵ Noah Fleisher, "Bullis Hall B&B: Comfort and class in Bangall," *The Pine Plains Register-Herald*, October 5, 2000, A8.

¹⁶ Elinor C Beckwith, *The Town of Stanford in History: 180th Anniversary 1793-1973* (1973), 44.

**United States Department of the Interior
National Park Service**

**National Register of Historic Places
Continuation Sheet**

Section 8 Page 5

Bangall Post Office
Name of Property
Dutchess, New York
County and State

postmaster.¹⁷ The postcards were a desired commodity among summer visitors when boarding houses were popular. Other items for sale included dry goods, boots, candy, and cigars. The post office was not considered the general store, as there was already one present in the hamlet; however, it did provide a convenient shopping opportunity for patrons.

The partition (screen line) with postal boxes and window that separates the post office employees from the public was transferred to Bangall in 1915 from the former Newburgh post office. According to book *Dutchess County Post Offices*, the screen line dates to 1885.¹⁸ Therefore, it most likely came from an earlier post office building in Newburgh because the current Newburgh post office was constructed in 1931 (listed in the NRHP 1989). The current postmaster – Louis Woodcock – indicated that the former Newburgh post office had an excess number of post office boxes and that is why the boxes installed at Bangall are numbered 451 through 630.

Based on a September 1954 article published in the *Pine Plains Register Herald*, a community free library was established in the Bangall Post Office during that era. Donations were received from local residents, as well as people from Rhinebeck and Millbrook, in order to get the community project up and running.¹⁹ Later, during the late 1980s and early 1990s, the front area of the post office housed the Stanford Historical Society's collections.

In 1973 Barbara Knickerbocker Beskind, daughter of Harrie Knickerbocker, presented the deed of the Bangall Post Office to the Stanford Historical Society (officially formed in 1969). Robert Churton, owner of the land on which the post office stands, followed Mrs. Beskind's decision and generously deeded the land to the Stanford Historical Society that same year.

The United States Postal Service (USPS) continues to rent the building as the Bangall Post Office for local residents with box service, stamp sales, and mailing privileges only. The Stanford Historical Society's collections remain housed at the

¹⁷ Mrs. Walter G. Thorpe, "Stanford History Stories Result of Birthday Calendar," *The Pine Plains Register-Herald*, March 30, 1967, 1.

¹⁸ Joyce C Ghee, *Dutchess County Post Offices* (Poughkeepsie: Dutchess County Department of History, 1983)

**United States Department of the Interior
National Park Service**

**National Register of Historic Places
Continuation Sheet**

Section 8 Page 6

Bangall Post Office
Name of Property
Dutchess, New York
County and State

post office and the society also uses the building as its headquarters and meeting place. The Bangall Post Office has been the center of community life in the hamlet since 1915 and is an intact and distinctive building in the town of Stanford.

¹⁹ "Community Free Library in Bangall," *The Pine Plains Register-Herald*, September 9, 1954, 3.

United States Department of the Interior
National Park Service

National Register of Historic Places
Continuation Sheet

Section 9 Page 1

Bangall Post Office

Name of Property

Dutchess, New York

County and State

Bibliography:

Beckwith, Elinor C. *The Town of Stanford in History: 180th Anniversary 1793-1973*. 1973.

Boland, Beth M. *National Register Bulletin 13: How to Apply the National Register Criteria to Post Offices*. United States Department of the Interior, National Park Service, Washington, D.C., 1994.

“Community Free Library in Bangall.” *Pine Plains Register-Herald*, September 9, 1954.

Fleisher, Noah. “Bullis Hall B&B: Comfort and class in Bangall.” *Pine Plains Register-Herald*, October 5, 2000.

Ghee, Joyce C. *Dutchess County Post Offices*. Poughkeepsie: Dutchess County Department of History, 1983.

Hyde Park, Bangall, Stanfordville [map]. 20 rods to 1 inch. In: O.W. Gray & Son and F.A. Davis. *Illustrated Atlas of Dutchess County, New York*. Reading: Reading Publishing Co., 1876, p. 15.

Loeb, Penny. “Stanford: a town of schools, mills, and farms in 1882.” *The Pine Plains Register-Herald*, December 30, 1982.

Lomoriello, Gene. “Bangall Post Office: a small kingdom.” *The Pine Plains Register-Herald*, October 19, 1989.

McDermott, William P. *Dutchess County Railroads*. Accessed November 6, 2013. www.hudsonrivervalley.org

“Mrs. Knickerbocker Will Observe 94th Birthday.” *The Harlem Valley Times*, January 8, 1942.

Spiers, Donald C., comp., *Stanford Memories: A Compilation of Letters, Interviews, News Clippings, and Excerpted Articles*. Freeman: Pine Hill Press, Inc., 1998.

“Stanfordville Birthday Calendar Features Old Area Photographs, Story On Them.” *Pine Plains Register-Herald*, December 8, 1966.

Stanford Master Plan Committee, Town of. *Stanford Master Plan*. January 2012. Accessed November 7, 2013. <https://sites.google.com/site/stanfordplan2010/>.

Thorpe, Mrs. Walter G. “Stanford History Stories Result of Birthday Calendar.” *The Pine Plains Register-Herald*, March 30, 1967.

**United States Department of the Interior
National Park Service**

**National Register of Historic Places
Continuation Sheet**

Section 10 Page 1

Bangall Post Office
Name of Property
Dutchess, New York
County and State

Verbal Boundary Description

The boundary of the nominated property has been drawn on the attached map with scale

Boundary Justification

The nomination boundary encompasses the original parcel associated with this property.

United States Department of the Interior
National Park Service

National Register of Historic Places
Continuation Sheet

Section 10 Page 2

Bangall Post Office
Name of Property
Dutchess, New York
County and State

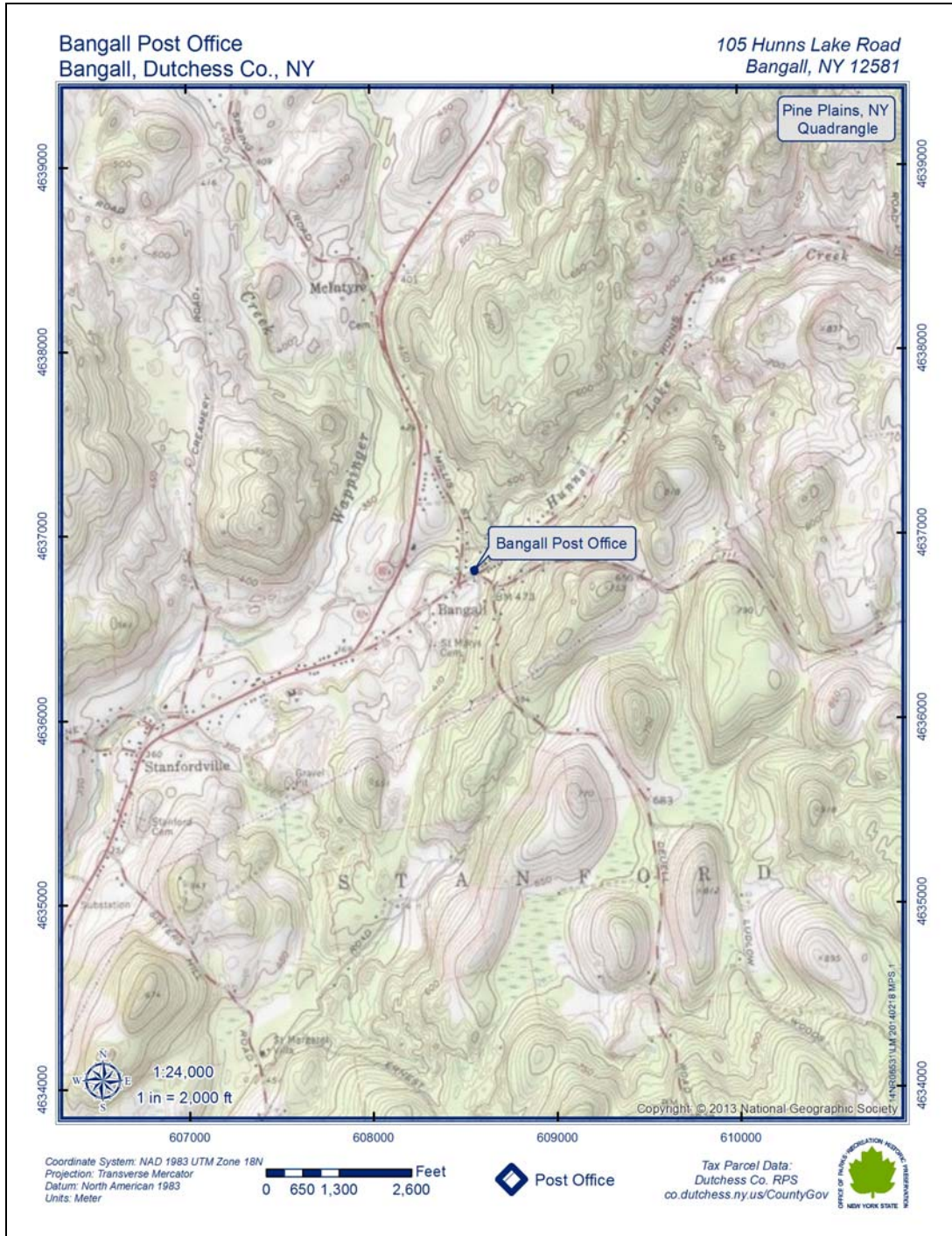


Figure 1: Location Map

United States Department of the Interior
National Park Service

National Register of Historic Places
Continuation Sheet

Section 10 Page 3

Bangall Post Office
Name of Property
Dutchess, New York
County and State

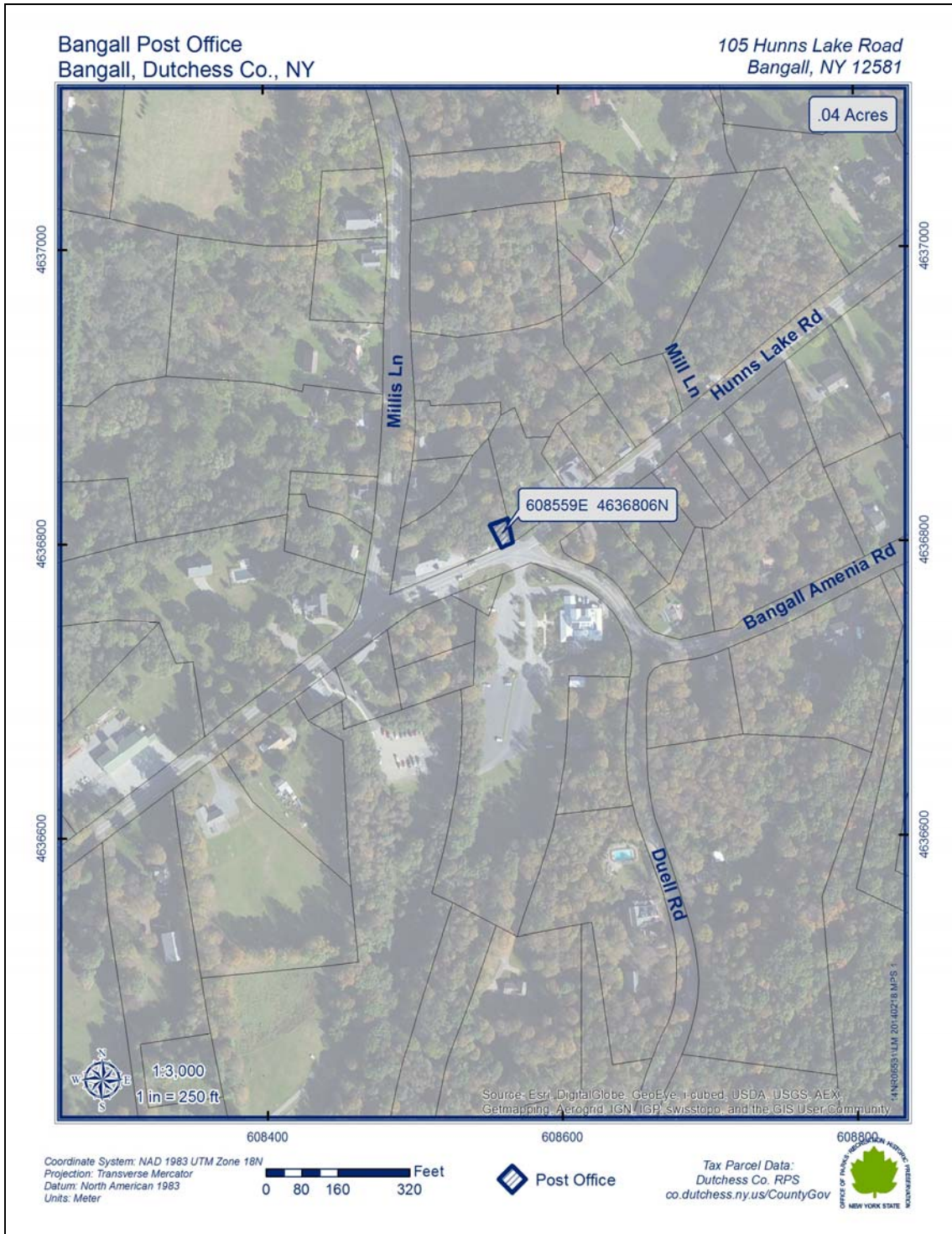


Figure 2: Property Map

United States Department of the Interior
National Park Service

National Register of Historic Places
Continuation Sheet

Section 11 Page 1

Bangall Post Office
Name of Property
Dutchess, New York
County and State

Additional Information



Figure 3: Undated photograph (possibly ca. 1920), looking west along Hunns Lake Road; Bangall Post Office on the right.

United States Department of the Interior
National Park Service

National Register of Historic Places
Continuation Sheet

Section 11 Page 2

Bangall Post Office
Name of Property
Dutchess, New York
County and State

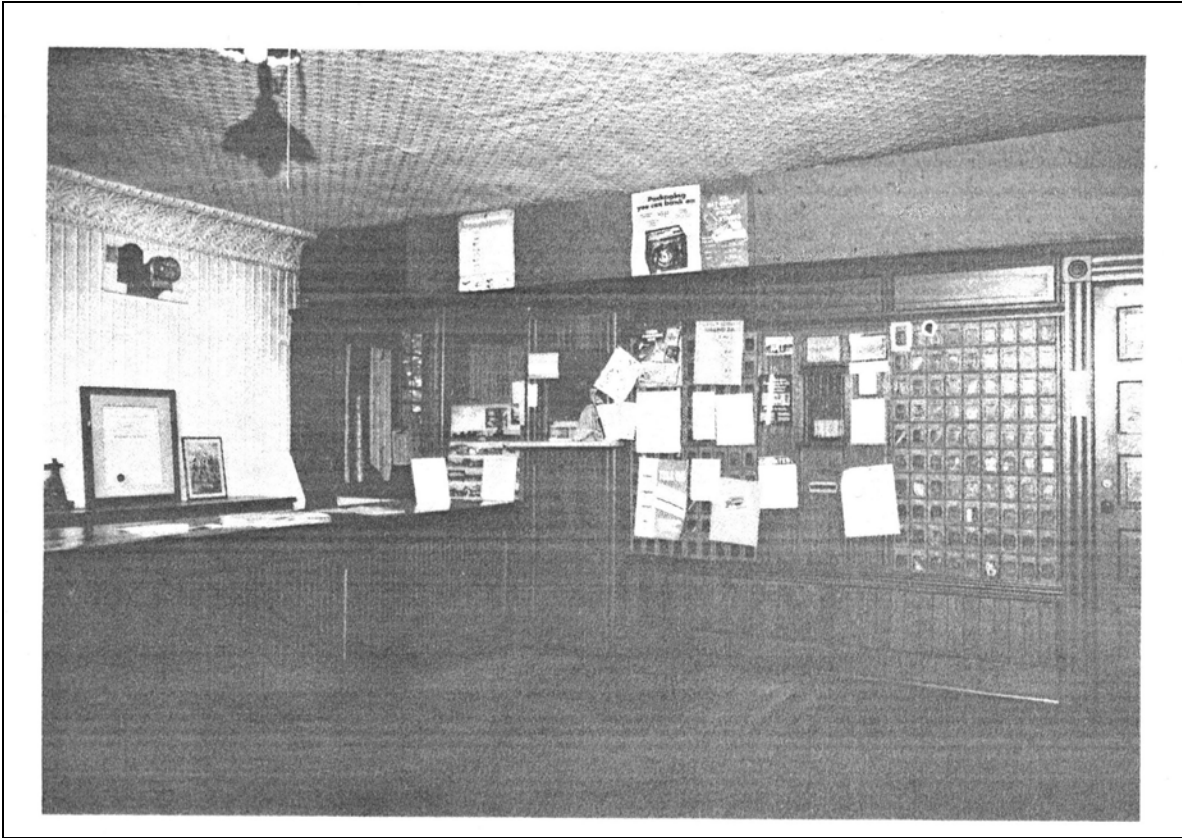


Figure 4: Bangall Post Office interior ca. 1983

**United States Department of the Interior
National Park Service**

**National Register of Historic Places
Continuation Sheet**

Bangall Post Office

Name of Property

Dutchess, New York

County and State

Section 11 Page 3

Photo Log

Name of Property: Bangall Post Office
City or Vicinity: Stanford
County: Dutchess County
State: NY
Name of Photographer: Linda Mackey
Date of Photographs: November 2013
Location of Original Digital Files: P.O. Box 189; Peebles Island State Park; Waterford, NY 12188
Number of Photographs: 5

Photo #1 (NY_DutchessCounty_BangallPostOffice_0001)
Primary (south) façade, camera facing north

Photo #2 (NY_DutchessCounty_BangallPostOffice_0002)
East elevation (left) and north elevation, camera facing southwest

Photo #3 (NY_DutchessCounty_BangallPostOffice_0003)
West elevation (left) and primary facade, camera facing northeast

Photo #4 (NY_DutchessCounty_BangallPostOffice_0004)
Post Office interior; partition

Photo #5 (NY_DutchessCounty_BangallPostOffice_0005)
Post Office interior; store counter and upper cabinets



U.S. POST OFFICE
BANGALL, N.Y. 12506

1-011





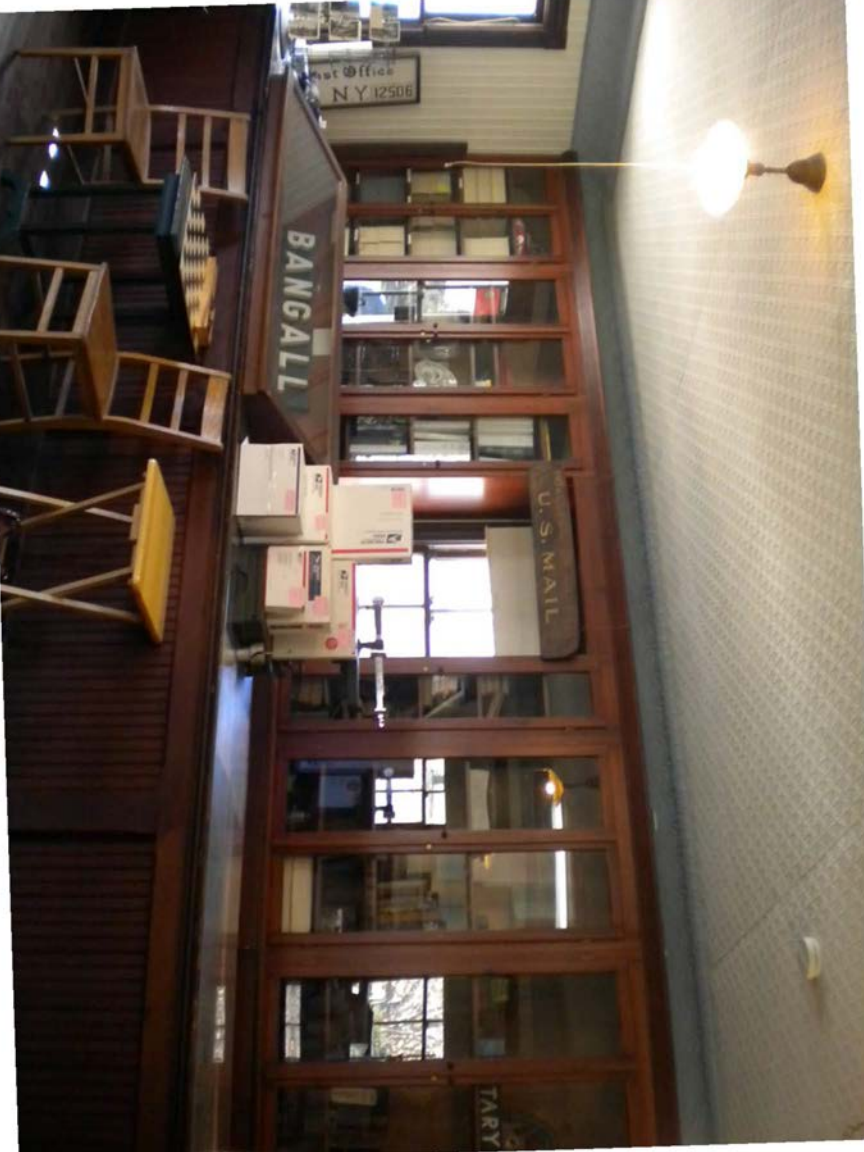


IS YOUR PACKAGE
SAFE TO MAIL?

No. Mail will be available
for pickup 1st through 5th

IS YOUR PACKAGE
SAFE TO MAIL?





BANGALL

U.S. MAIL

Post Office
N.Y. 12506

TARY

UNITED STATES DEPARTMENT OF THE INTERIOR
NATIONAL PARK SERVICE

NATIONAL REGISTER OF HISTORIC PLACES
EVALUATION/RETURN SHEET

REQUESTED ACTION: NOMINATION

PROPERTY NAME: Bangall Post Office

MULTIPLE NAME:

STATE & COUNTY: NEW YORK, Dutchess

DATE RECEIVED: 4/02/14 DATE OF PENDING LIST: 4/25/14
DATE OF 16TH DAY: 5/12/14 DATE OF 45TH DAY: 5/19/14
DATE OF WEEKLY LIST:

REFERENCE NUMBER: 14000224

REASONS FOR REVIEW:

APPEAL: N DATA PROBLEM: N LANDSCAPE: N LESS THAN 50 YEARS: N
OTHER: N PDIL: N PERIOD: N PROGRAM UNAPPROVED: N
REQUEST: N SAMPLE: N SLR DRAFT: N NATIONAL: N

COMMENT WAIVER: N

ACCEPT RETURN REJECT 5.19.14 DATE

ABSTRACT/SUMMARY COMMENTS:

Entered in
The National Register
of
Historic Places

RECOM./CRITERIA _____

REVIEWER _____ DISCIPLINE _____

TELEPHONE _____ DATE _____

DOCUMENTATION see attached comments Y/N see attached SLR Y/N

If a nomination is returned to the nominating authority, the nomination is no longer under consideration by the NPS.



New York State Office of Parks, Recreation and Historic Preservation

Division for Historic Preservation
P.O. Box 189, Waterford, New York 12188-0189
518-237-8643



Andrew M. Cuomo
Governor

Rose Harvey
Commissioner

28 March 2014

Alexis Abernathy
National Park Service
National Register of Historic Places
1201 Eye St. NW, 8th Floor
Washington, D.C. 20005

Re: National Register Nominations

Dear Ms. Abernathy:

I am pleased to enclose the following four National Register nominations, all on disc, to be considered for listing by the Keeper of the National Register:

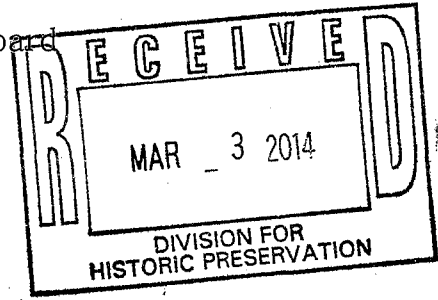
Bangall Post Office, Dutchess County
Glenville District No. 5 Schoolhouse, Schenectady County
Frank and Eliza Tryon House, Cayuga County
Geneva Downtown Historic District, Ontario County

Please feel free to call me at 518.237.8643 x 3261 if you have any questions.

Sincerely:

Kathleen LaFrank
National Register Coordinator
New York State Historic Preservation Office

Town of Stanford Planning Board
26 Town Hall Road
PO Box 436
Stanfordville, NY 12581



Linda Mackey
Division for Historic Preservation
NYS Office of Parks, Recreation and Historic Preservation
Peebles Island
P.O. Box 189
Waterford, NY 12188-0189

February 28, 2014

Dear Ms. Mackey:

At its meeting on February 26, 2014, the Town of Stanford Planning Board considered the application of Stanford Historical Society for nomination of the Bangall Post Office to the National and State Registers of Historic Places. The Board agreed that the structure meets the criteria for significance, and unanimously adopted a resolution that this letter be sent to your office advising SHPO of the Planning Board's support of the application.

Sincerely yours,

Robert Butts / MR

Robert Butts, Chairman