



UNITED STATES DEPARTMENT OF THE INTERIOR  
NATIONAL PARK SERVICE

NATIONAL REGISTER OF HISTORIC PLACES  
PROPERTY PHOTOGRAPH FORM

(Type all entries - attach to or enclose with photograph)

STATE Kansas	
COUNTY Douglas	
FOR NPS USE ONLY	
ENTRY NUMBER 71.2.20.0013	DATE 2/24/71

SEE INSTRUCTIONS

1. NAME

COMMON: Old Castle Hall  
AND/OR HISTORIC:

2. LOCATION

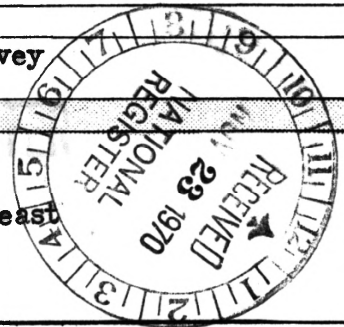
STREET AND NUMBER:  
513 Fifth St.  
CITY OR TOWN:  
Baldwin  
STATE: Kansas 66006      CODE 20      COUNTY: Douglas      CODE 045

3. PHOTO REFERENCE

PHOTO CREDIT: Kansas State Historical Society Staff  
DATE OF PHOTO: 1969  
NEGATIVE FILED AT: Douglas County File, Historic Sites Survey  
Kansas State Historical Society

4. IDENTIFICATION

DESCRIBE VIEW, DIRECTION, ETC.  
  
Front view of Old Castle Hall from the northeast





UNITED STATES DEPARTMENT OF THE INTERIOR  
NATIONAL PARK SERVICE

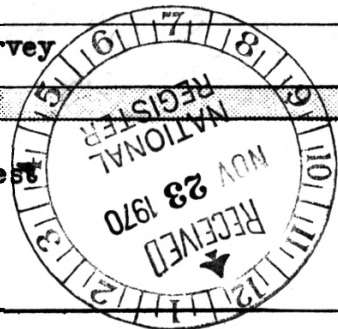
NATIONAL REGISTER OF HISTORIC PLACES  
PROPERTY PHOTOGRAPH FORM

(Type all entries - attach to or enclose with photograph)

STATE <b>Kansas</b>	
COUNTY <b>Douglas</b>	
FOR NPS USE ONLY	
ENTRY NUMBER <b>71.2.20.0013</b>	DATE <b>2/24/71</b>

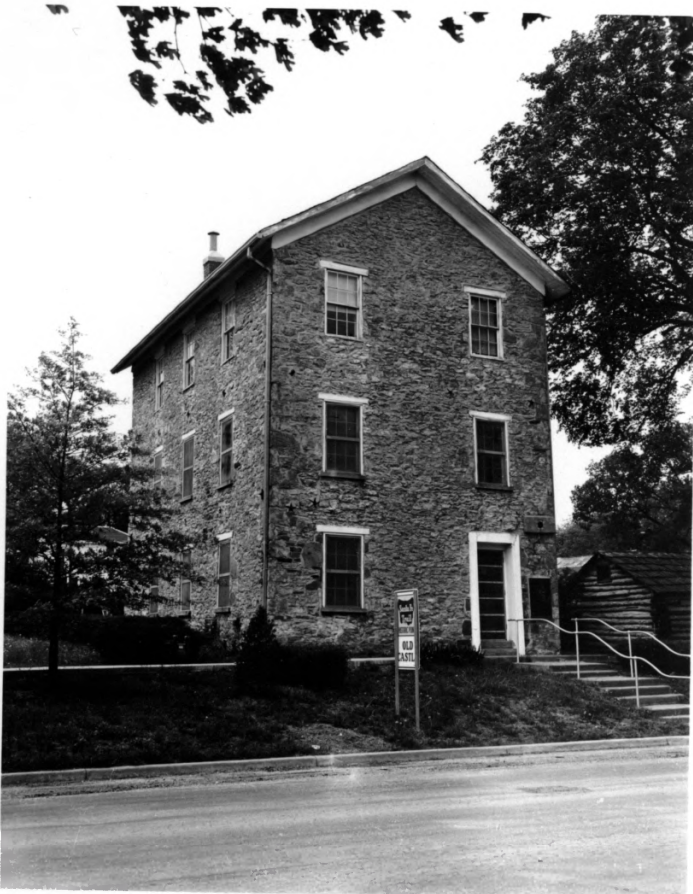
SEE INSTRUCTIONS

<b>1. NAME</b>			
COMMON: <b>Old Castle Hall</b>			
AND/OR HISTORIC:			
<b>2. LOCATION</b>			
STREET AND NUMBER: <b>513 Fifth St.</b>			
CITY OR TOWN: <b>Baldwin</b>			
STATE: <b>Kansas</b>	CODE <b>66006</b>	COUNTY: <b>Douglas</b>	CODE <b>015</b>
<b>3. PHOTO REFERENCE</b>			
PHOTO CREDIT: <b>Kansas State Historical Society Staff</b>			
DATE OF PHOTO: <b>1969</b>			
NEGATIVE FILED AT: <b>Douglas County File, Historic Sites Survey Kansas State Historical Society</b>			
<b>4. IDENTIFICATION</b>			
DESCRIBE VIEW, DIRECTION, ETC.  <b>Rear view of Old Castle Hall from the southwest</b>			





Old Castle  
Baker University  
Baldwin, Kansas



Top Looking Southwest  
Bottom Looking Northwest  
May 5, 1965  
A. Gilbert Belles