



Nickles House (#1)

Erskine College/Due West Historic District

Due West, S. C.

John C. Blythe, Jr. 9/26/80

Upper Savannah Council of Governments

#1 of 21

FEB 16 1982.



Euphemian Literary Society Hall (#23)
Erskine College/Due West Historic District
Due West, S. C.
John C. Blythe, Jr. 7/29/80
Upper Savannah Council of Governments
#2 of 21

FEB 16 1982



Erskine Building (#25)
Erskine College/Due West Historic District
Due West, S. C.
Ruth K. LaForge
Upper Savannah Council of Governments
#3 of 21

FEB 16 1982



Philomathean Literary Society Hall (#26)
Erskine College/Due West Historic District
Due West, S. C.
Ruth K. LaForge
Upper Savannah Council of Governments
#4 of 21

FEB 16 1982



Galloway House (#29)

Erskine College/Due West Historic District

Due West, S. C.

John C. Blythe, Jr. 8/14/80

Upper Savannah Council of Governments

#5 of 21

FEB 16 1982



Due West ARP Church (#34)
Erskine College/Due West Historic District
Due West, S. C.
John C. Blythe, Jr. 8/28/80
Upper Savannah Council of Governments
#6 of 21

FEB 16 1982



Brownlee-Kennedy House (#35)
Erskine College/Due West Historic District
Due West, S. C.
John C. Blythe, Jr. 8/1/80
Upper Savannah Council of Governments
#7 of 21

FEB 16 1982



Sloan-Neel-McCain-Lesesne House (#48)
Erskine College/Due West Historic District
Due West, S. C.
John C. Blythe, Jr. 9/26/80
Upper Savannah Council of Governments
#8 of 21

FEB 16 1982



Lindsay-Bell House (#52)
Erskine College/Due West Historic District
Due West, S. C.
Ruth K. LaForge
Upper Savannah Council of Governments
#9 of 21

FEB 16 1982



Student Cabin (#52A)

Erskine College/Due West Historic District

Due West, S. C.

John C. Blythe, Jr. 8/26/80

Upper Savannah Council of Governments

#10 of 21

FEB 16 1982



Bell-Mitchell House (#58)
Erskine College/Due West Historic District
Due West, S. C.
John C. Blythe, Jr. 9/26/80
Upper Savannah Council of Governments
#11 of 21

FEB 16 1982



Alumnae Memorial Hall (#85)
Erskine College/Due West Historic District
Due West, S. C.
John C. Blythe, Jr. 8/28/80
Upper Savannah Council of Governments
#12 of 21

FEB 16 1982



Carnegie Hall Dormitory (#88)
Erskine College/Due West Historic District
Due West, S. C.
John C. Blythe, Jr. 8/28/80
Upper Savannah Council of Governments
#13 of 21

FEB 16 1982



Bonner-Burrous House (#115)
Erskine College/Due West Historic District
Due West, S. C.
John C. Blythe, Jr. 9/26/80
Upper Savannah Council of Governments
#14 of 21

FEB 16 1982



Men's Infirmary. (#17)

Erskine College/Due West Historic District

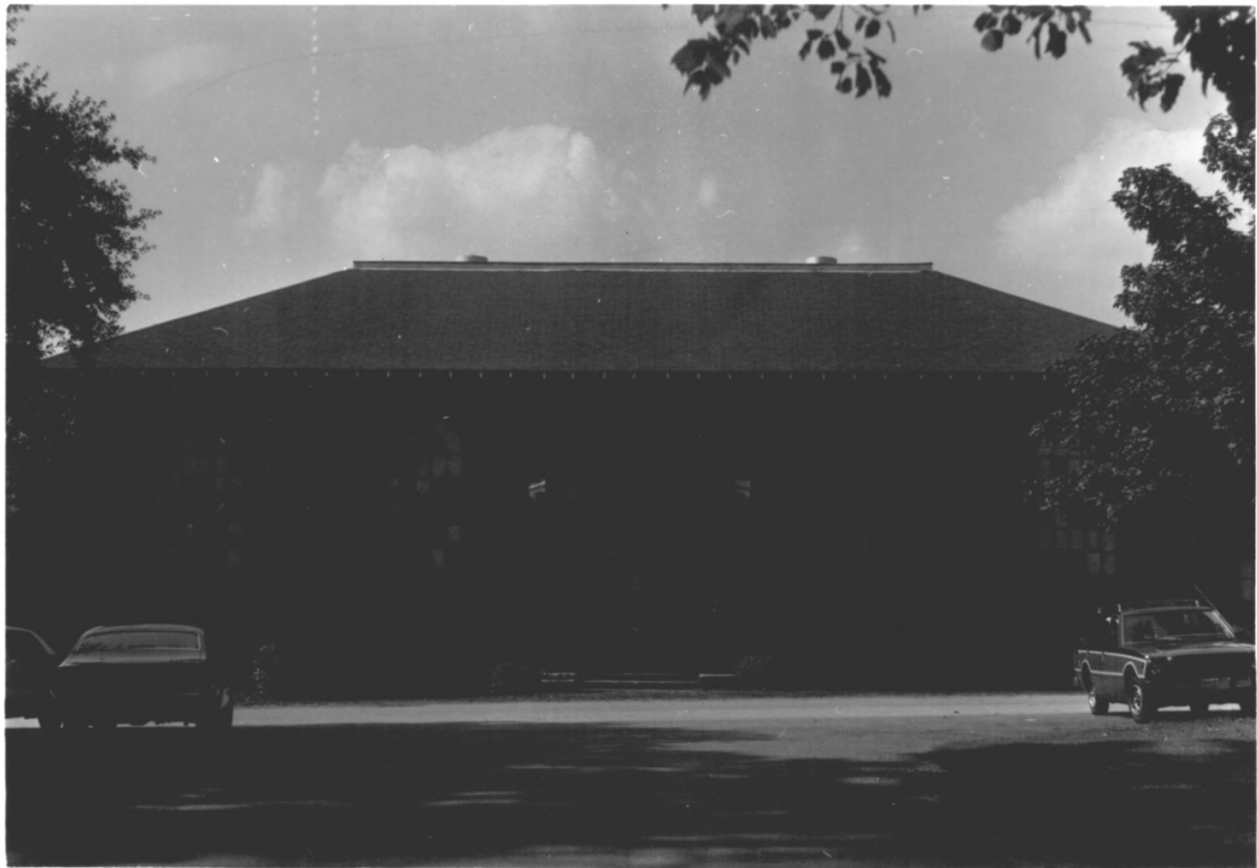
Due West, S. C.

John C. Blythe, Jr. 8/26/80

Upper Savannah Council of Governments

#15 of 21

FEB 16 1982



Alumni Gymnasium (#18)

Erskine College/Due West Historic District

Due West, S. C.

John C. Blythe, Jr. 9/26/80

Upper Savannah Council of Governments

#16 of 21

FEB 16 1982



Bradley House (#47)

Erskine College/Due West Historic District

Due West, S. C.

John C. Blythe, Jr. 8/1/80

Upper Savannah Council of Governments

#17 of 21

FEB 16 1982



Clinkscapes-Pressly House (#49)
Erskine College/Due West Historic District
Due West, S. C.
John C. Blythe, Jr. 8/26/80
Upper Savannah Council of Governments
#18 of 21

FEB 16 1982



Agnew - Sain Gulf Station (#71)
Erskine College/Due West Historic District
Due West, S. C.
John C. Blythe, Jr. 8/7/80
Upper Savannah Council of Governments
#19 of 21

FEB 16 1982



Parkinson House (#78)

Erskine College/Due West Historic District

Due West, S. C.

John C. Blythe, Jr. 8/7/80

Upper Savannah Council of Governments

#20 of 21

FEB 16 1982



Reid House (#80)

Erskine College/Due West Historic District

Due West, S. C.

John C. Blythe, Jr. 8/7/80

Upper Savannah Council of Governments

#21 of 21

FEB 16 1982

Erskine College/Due West Historic District
Abbeville County, South Carolina
John C. Blythe, Jr., September and October 1980
Upper Savannah Council of Governments
Greenwood, South Carolina



Ellis-Fleming House (#2)



Janette Crawford House (#4)



McIlwaine-Ashley House (#5)



Seawright House (#6)



Haddon-Davis-Ferguson House (#8)



Seawright-Hoffman-Haldeman House (#9)



Clinkscales-Hagen-Pruitt House (#13)



Brownlee-Huntley House (#15)



Due West Railroad Depot (#16)



William Moffatt Grier Statue (#28)



Old Bank Building (#30)



Commercial Building (#32)



President's House (#33)



Hawthorne-Wood House (#37)



Todd-McAdams-Pressly House (#38)



Boyce-Ellison-King House (#42)



Jamie Pressly House (#43)



Sharpe-Agnew House (#44)



Leith-Logan House (#46)



Due West Baptist Church (#53)



Clinkscales House (#54)



McGee-Kennedy-Boyce House (#55)



Wardlaw-Moore House (#57)



Art Department Building (#59)
Main Street Theater (#60A)
Exhibition Center (#60B)



McQuiston Divinity Building (#61)



Due West Hotel (#62)



Plaxco's Drug Store (#63A)
Due West Supply Company Annex (#63B)
The Family Store (#63C)
Due West Supply Company (#63D)



Due West Town Hall/ Fire
Department (#64)



Associated Reformed Presbyterian
Printing Office (#65)



Commercial Building (#68A)
Farmers and Merchants Bank
Building (#68B)



Johnston-Edwards House (#70)



Miller-Bonner House (#74)



Edwards-Strong House (#83)



Edwards-Hawthorne Store (#84)



Robinson Hall Dormitory (#90)
Woman's College Circle



Robinson Terraces (#91)



Robinson-Hawthorne-Cribbs House (#93)



McGee Gymnasium (#94)



R.M. Stevenson House (#95)



Edwards-Clarke House (#97)



Wilkerson-McConnell House (#98)



McDill-Ashley House (#99)



Allen Gordon House (#103)



Todd-Young House (#105)



McDill-Ferguson House (#106)



Todd-Kennedy House (#108)



Wideman-Gettys House (#109)



Plaxco House (#110)



Galloway-Sutherland House (#111)



Ralph Ellis House (#112)



Smith-Pruitt House (#113)



Leslie House (#116)



Branyon House (#117)



Jordan-Smith House (#121)



Able-Humphrey House (#3)



Ellis-Lampton House (#7)



Gravely-Black House (#10)



Winnie Phillips House (#11)



Bill Lesesne House (#12)



Andrus House (#14)



Ellenburg Pavilion (#19)
Erskine College Campus



Grier Hall Dormitory (#21)
Erskine College Campus



Pressly Hall Dormitory (#22)
Erskine College Campus



Reid Science Hall (#24)
Erskine College Quadrangle



McCain Library (#27)
Erskine College Quadrangle



SAFE Building (#31)



Mary Kennedy House (#36)



John Pressly House (#39)



Due West ARP Church Manse (#40)



Orr-Sloan House (#41)



A.H. Baldwin House (#45)



Jean Pressly House (#50)



White-McFerrin House (#51)



McDonald Duplex (#56)



William Henry Belk Hall (#66)
Erskine College Campus



Watkins Student Center (#67)
Erskine College Campus



Campus Post Office & Canteen (#67A)
Erskine College Campus



Campus Dining Hall (#67B)
Erskine College Campus



Commercial Bank Building (#69)



Rachel Pressly House (#72)



Ray Young House (#73)



Water Tower (#75)



Telephone Exchange Building (#76)



Long House (#77)



Sallie Kennedy House (#79)



Agnes Plaxco House (#81)



Professor Strong House (#82)



Kennedy Hall Dormitory (#86)
Woman's College Circle



Bonner Hall Dormitory (#87)
Woman's College Circle



Younts Infirmary (#89)
Woman's College Circle



McWhite House (#92)



Ralston-Hagen-Sharpe House (#96)



Josie Stevenson House (#100)



Merwyn Johnson House (#101)



J. Calvin Koonts House (#107)



Saunders-McGee House (#119)