

DPF-054
9/80

NEW JERSEY OFFICE OF CULTURAL AND ENVIRONMENTAL SERVICES
HISTORIC PRESERVATION SECTION
INDIVIDUAL STRUCTURE SURVEY FORM

HISTORIC SITES INVENTORY NO. 0713 191

HISTORIC NAME: S.C. Smith House
LOCATION: 40 Northview Ave.

COMMON NAME: Schinelli House
BLOCK/LOT 2604/12; 16-M/28

MUNICIPALITY: Montclair
USGS QUAD: Orange
OWNER/ADDRESS: Schinelli, Barbara A.
See above

COUNTY: Essex
UTM REFERENCES:
Zone/Northing/Easting

DESCRIPTION

Construction Date: 1900

Source of Date: Tax Assessor

Architect: S.C. Smith

Builder: S.C. Smith

Style: Queen Anne

Form/Plan Type: Rectangular

Number of Stories: 2½

Foundation: Brick

Exterior Wall Fabric: Clapboard (first level) wood, shingles (upper portion)

Fenestration: 3 bays, one of which is set back; entrance at right end;
6/15 ft. windows prevail

Roof/Chimneys: Intersecting gables, asphalt shingles; one central chimney

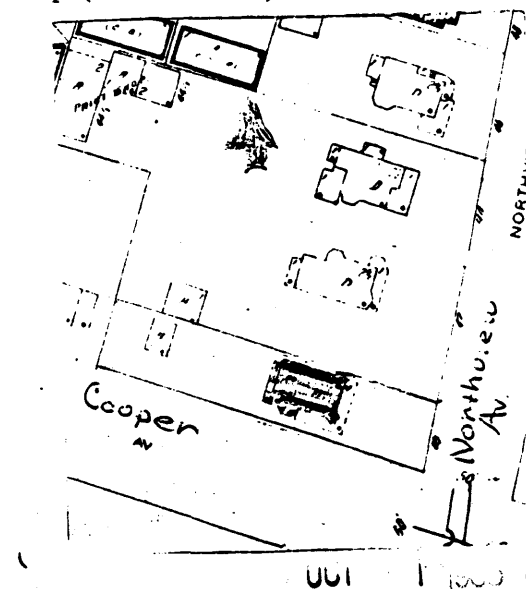
Additional Architectural Description:

A turret, capped by a pyramidal roof, and open on the second level, dominates the left end of the principal facade; a modified Palladian window, with flat-arch apertures, pierces the gable apex; a gabled projection is situated on the second level, surmounting the front entrance; this single-door entrance is shielded by a wrap-around porch, the roof of which is carried by fluted, paired posts; a pediment surmounts the portal which is aligned with the entrance; a bay window protrudes from the left end of the first level; a transomed, stained-glass window, projecting slightly from the wall surface, is present on the right elevation.

PHOTO Negative File No. R9, 16



Map (Indicate North)



NEW JERSEY DEPARTMENT OF ENVIRONMENTAL PROTECTION, OFFICE OF CULTURAL AND ENVIRONMENTAL SERVICES
HISTORIC PRESERVATION SECTION, 109 WEST STATE STREET, TRENTON, NEW JERSEY 08625 (609) 292-2023

SITING, BOUNDARY DESCRIPTION, AND RELATED STRUCTURES:

Lot size - 37' x 192' Irregular
Principal Structure - situated in eastern (front) portion of lot;
Subsidiary building - northwest corner
Less than one acre.

SURROUNDING ENVIRONMENT: Urban Suburban Scattered Buildings
Open Space Woodland Residential Agricultural Village
Industrial Downtown Commercial Highway Commercial Other

SIGNIFICANCE:

Designed by S.C. Smith, the original owner, this residence was referred to as a "modern dwelling of low cost" in the September 1900 issue of Scientific American, Building Edition. The angled turret & irregular plan distinguish this home from its neighbors.

ORIGINAL USE: Residence

PRESENT USE: Residence

PHYSICAL CONDITION: Excellent Good Fair Poor

REGISTER ELIGIBILITY: Yes Possible No Part of District

THREATS TO SITE: Roads Development Zoning Deterioration

No Threat Other

COMMENTS:

REFERENCES:

Scientific American, Building Edition; September 1900.

Miller, D. I., Map of the Town of Montclair, Philadelphia:
D. I. Miller & Co., 1901.

RECORDED BY: Gary Sachau
ORGANIZATION: Preservation Montclair

DATE: 6/29/81

A RESIDENCE AT HARTFORD, CONN.

We present as an illustration on pages 69 and 51, in this issue, a residence which has been erected for Dr. T. B. Enders, at Hartford, Conn. The design is a modern adaptation of the American style, with Dutch feeling. The main architectural features are the "stepping-stone" gables, the entrance way with copper balustrades, and the chimneys and chimney pots. The underpinning is built of rock faced red sandstone. The superstructure is constructed of Roman brick of a dark dull buff color, while the trimmings are of dressed sandstone. The bond courses in gables and arches are made by selecting the lightest colored brick and laying same with level bond with other brick. The cornices and gutters are of copper. The roof is covered with red shingle tiles, harmonizing

nicely with the whole color scheme of the building. Dimensions: Front, 65 ft.; side, 68 ft. 4 in., not including terrace. Height of ceilings: Collar, 8 ft.; first story, 11 ft.; second, 10 ft.; third, 9 ft. The interior arrangement is most excellent. It contains many large rooms and a spacious hall. The vestibule and main hall have red tile floors, tiles twelve inches square. Steps from vestibule to hall proper are of dressed stone. The trim in hall is of selected straight-grained oak, set up with finely sanded finish throughout. It has a paneled wainscoting from floor to top of door casing, the top of wainscot and door casing being level. The whole is finished with a shelf six inches wide running around the entire hall. The main staircase is a grand one, turned out of oak, same as trim, and with carved newels, etc. The hall also contains an attractive nook with paneled seat, and an open fireplace, with tiled facings and hearth, and a Dutch mantel, with large overhanging hood, with wood shingle top extending up to the ceiling line. The parlor is treated in old ivory white and gold, and it contains a very handsome fireplace, with tiled trimmings and mantel. The living-room is trimmed with dark red mahogany. It has massive ceiling beams 8 inches deep and 4 inches wide, boxed 2 feet 6 inches on centers. The spaces between ceiling beams are filled with panels. There is a heavy frieze of mahogany, and each beam is supported at end with neat carved brackets. The fireplace has a tiled hearth and a tiled front, with a neat carved shelf, supported by carved brackets and pilasters. On top of shelf there is a richly carved cabinet, with paneled door and ornamental hinges, and a carved cornice above. The dining-room is trimmed with selected grained red oak. It has a fireplace with tiled hearth and facings, and a mantel of Dutch style, with large overhanging hood, with wood shingle top extending up to ceiling line, and also a beamed ceiling. The office and waiting-room are conveniently arranged and located, are provided with all the best modern fixtures, and finished off in a handsome manner. The butler's pantry is trimmed with white pine, with sink and drip-board, glass china cases, and open shelves. The kitchen is trimmed with white pine treated natural, and it contains all the best modern fixtures complete. Ice box, with outside atrance thereto, is also built in. The doors on first

floor are laid of selected quartered white oak, tongued and secret joined. The second floor contains four bedrooms, large closets, two bathrooms, and a large laboratory, taking in the whole extension wing. The two south bedrooms are trimmed with birch, the northwest bedroom with sycamore, and the east bedroom with cypress. The north bathroom has a Portland cement floor and a wainscoting six feet high, while the south bathroom has a white enameled tile wainscoting five feet in height. Both bathrooms are furnished with porcelain fixtures and exposed nickelplated plumbing. The fireplaces on this floor, where shown, have tiled hearths and facings, and neat wooden mantels to correspond with the trim of each room respectively. The floors are laid with quartered white oak. The third floor contains

staircase, and the old fortifications have been converted into promenades. The house shown in our engraving dates from 1590, and has a picturesque gable overhanging the street. The house really has five stories and an attic. Each story projects further and further over the street, supported on corbels. The broad space between the various floors is carved in conventional patterns. For our engraving we are indebted to the *Blätter für Architektur und Kunsthandwerk*. Verlag von Richard Bong.

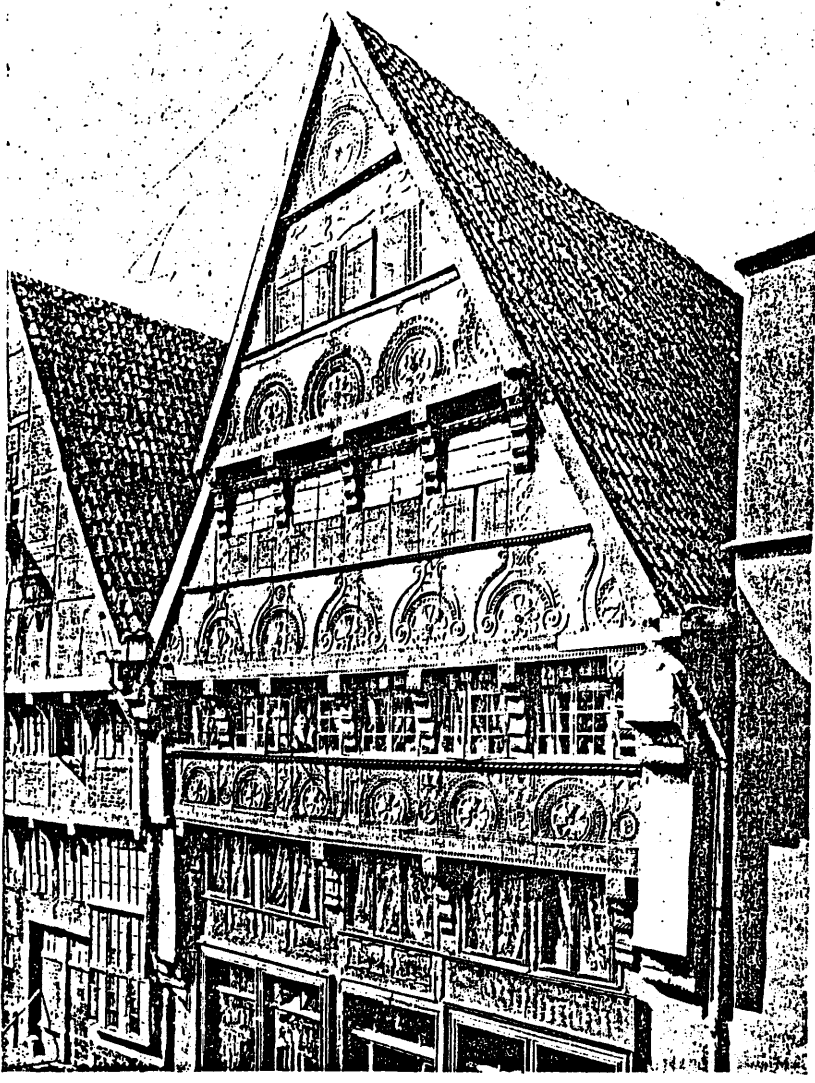
S.A. 1900 P. 43

(6713-191) 40 North 12th St. AUC.

A MODERN DWELLING AT UPPER MONTCLAIR, N. J.

We present herewith, on page 53, a modern dwelling recently completed for S. C. Smith, Esq., at Upper Montclair, N. J. The design shows an excellent example for a modern dwelling of low cost, which has a combination

of good elevations and well arranged plans. The principal features are the piazza, bay-windows, and tower, which add dignity to the whole general effect. The underpinning is built of red brick laid up in white mortar. The exterior framework is covered with sheathing, paper, and the first story is covered with clapboards, and painted yellowish gray, with ivory white trimmings; the second and third stories are covered with shingles and stained a soft brown color. The roof is covered with shingles and finished natural. Dimensions: Front, 30 ft.; side, 40 ft., not including piazza. Height of ceilings: Collar, 7 ft.; first story, 9 ft.; second, 8 ft.; third, 8 ft. The hall and parlor are separated by an archway, with column effect, in a very attractive manner. The hall contains an ornamental staircase, with turned balusters, newel, and rail. The sitting-room contains an open fireplace furnished with tile facings, and hearth and mantel of excellent design. The dining-room is treated in a neat manner, and is separated from sitting-room by an archway with columns, thereby throwing the two apartments into one. The kitchen is provided with sink, hearth for range, and a large closet and pantry fitted up complete. The lobby at rear is large enough to admit ice-box. The second floor contains four bedrooms and closets, besides a bathroom, fitted up with the usual fixtures, in-



DWELLING HOUSE AT OSNABRÜCK.

cluding porcelain tub, "Atlas" siphon jet, closet, and exposed nickelplated plumbing. A cemented cellar contains an Auburn steam heater, laundry, and other necessary apartments. The contractors were: S. C. Smith, carpenter; Theodore Sigler, mason; Cornelius Halstead, painting, all of Upper Montclair, N. J., and Frederick Fara, plumber, of Montclair, N. J. Mr. S. C. Smith, architect and builder, Upper Montclair, N. J. Cost complete, \$3,800.

Our engravings were made direct from photographs of the building, taken specially for the SCIENTIFIC AMERICAN.

Our engravings were made direct from photographs of the building, taken specially for the SCIENTIFIC AMERICAN.

A COLONIAL RESIDENCE AT ALLENBURG, N. J.

The engravings shown on page 48, in this issue, illustrate a residence of Colonial treatment, recently erected for Major Henry S. Wright, U. S. A., at Allenburg, N. J. The lines of the building are square, but the elevations are sufficiently broken by many excellent

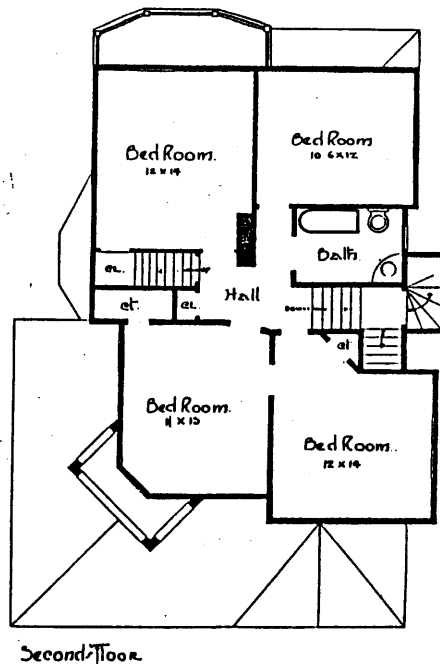
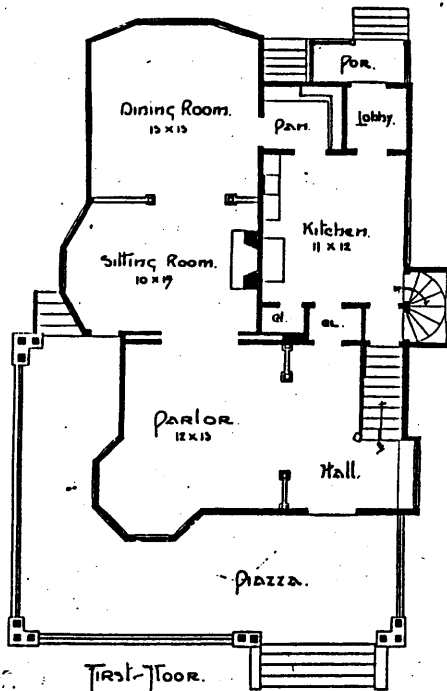
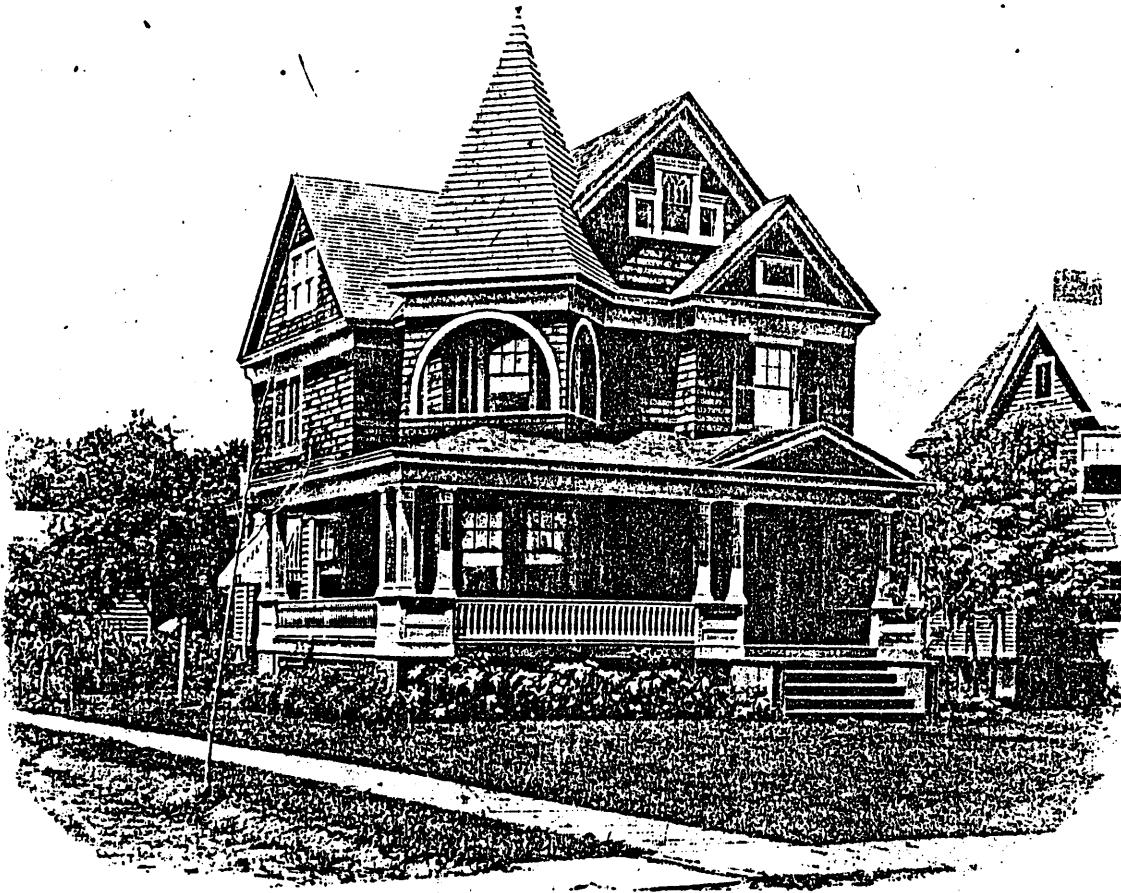
AN INTERESTING DWELLING HOUSE AT OSNABRÜCK.

OSNABRÜCK is a prosperous manufacturing town of Prussia, on the road between Rotterdam and Hanover. The older streets are narrow and crooked, and contain many interesting examples of Gothic and Renaissance domestic architecture. The modern houses are sub-

Thematic listing: A Selection of Montclair's Published Houses
Montclair Multiple Resource Listing

(0713-191)
40 Northview Ave.

S.A. 1900
P. 53



A MODERN DWELLING AT UPPER MONTCLAIR, N. J.—See page 43.