



Downtown Fargo N.D. District

PHOTO # 4

Hancock Bldg. (#9), right  
109-111 Broadway, Fargo  
and Douglass Building (#37), left  
113 Broadway, Fargo east view

Tom Jenkinson, Summer 1982, SHSND

Roll 60 Frame 12



Downtown Fargo N.D. District

PHOTO # 5

Gardner Hotel (#10)

18-26 Roberts St., Fargo  
east view

Tom Jenkinson, Summer 1982, SHSND  
Roll 59 Frame 19A

A black and white photograph of the Ivers Funeral Home building. The building is constructed of brick with a prominent Art Deco style. The central entrance features a double door with a geometric pattern of diagonal lines. Above the door is a decorative lintel with a repeating triangular motif. A large, curved sign above the entrance reads "IVERS FUNERAL HOME" in bold, white, sans-serif capital letters, flanked by horizontal lines. Above the sign are two small, arched windows with decorative surrounds. Two large, cylindrical lanterns hang from chains on either side of the entrance. Bare tree branches are visible in the upper right corner, and a concrete walkway leads to the entrance.

IVERS  
FUNERAL HOME

Downtown Fargo N.D. District

PHOTO # 7

Ivers, chapel doors on Roberts St.

(#11) 320-324 Roberts St.

Fargo east view

Tom Jenkinson, Summer 1982, SHSND

Roll 60 Frame 22



NORTHERN  
SCHOOL SUPPLY

Gally

BOOK STORE

SCHOOL SUPPLY

ONE WAY

Downtown Fargo N.D. District

PHOTO # 8

Robb-Lawrence warehouse (#12)

648-54 N. P. Ave., Fargo  
northwest view

Tom Jenkinson, Summer 1982, SHSND

Roll 2

Frame 20





LINDEN STORE

Santa

ONE WAY  
←

Alvin

Belmont

Rock

VALLEY SERVICE CO.

PIPE HEAVENS

VALLEY SERVICE CO.

VALLEY SERVICE CO.

VALLEY SERVICE CO.

VALLEY SERVICE CO.

VALLEY SERVICE CO.

VALLEY SERVICE CO.

VALLEY SERVICE CO.

Downtown Fargo N.D. District

PHOTO # 9

Looking west on N. P. Ave from  
8th St. S. at (left to right)  
802-02, 806-12, and 820 N.P. Ave.,  
(#61), (#62), and (#63), resp.  
northeast view

Tom Jenkinson, Summer 1982, SHSND

Roll 59 Frame 23



FREDERICK'S  
Flowers  
and GIFTS

# Downtown Fargo N.D. District

PHOTO # 10

Looking north up Roberts St. from  
N. P. Ave. On left from foreground  
into background, (#47), (#48), and  
(#10), 10-26 Roberts St. (inclu-

sive)  
Tom Jenkinson, Summer 1982, SHSND

Roll 59 Frame 26



GOLD  
SALE

BUSINESS COLLEGE  
DBC



Downtown Fargo N.D. District

PHOTO # 11

Looking west on Main St. from 7th  
St. S. Left: 702 (#140), (#84),  
and (#85). Right: N.P. depot park-  
ing lot in foreground and (#86) in  
rear east view

Tom Jenkinson, Summer 1982, SHSND  
Roll 60 Frame 27



BLOCK 6  
THE ORIGINAL TOWNSITE

Shoos

Johnson's For Shoes

STAN  
KERTIS  
SPORTING  
GOODS

Stan Kertis  
SPORTING GOODS

HME'S  
JEWELRY

VILLA

SHOTWELL FLORAL

BLOCK 6



MONTHLY  
PARKING  
\$20  
PARKING SERVICE  
235-1618



Downtown Fargo N.D. District

PHOTO # 12

600 Block of Main Ave. looking west  
left to right: (#76-83), (#2) Block  
6, 620 Main on left (south side)  
Right (north side) (#139) The Sod-  
buster sculpture  
Tom Jenkinson, Summer, 1982, SHSND

Roll 59 Frame 33A





DAKOTA BUSINESS COLLEGE  
"FOLLOW THE SUCCESSFUL"

DAKOTA BUSINESS COLLEGE  
25,000 PUPILS IN POSITIONS  
DBC

MAIN AVE

WORTH STREET  
MARKET STREET  
AMERICAN LINEN SUPPLY CO.  
AMERICAN LINEN

F.M.  
CARPETS  
LUMBER

Downtown Fargo N.D. District

PHOTO # 13

West side of 8th St. S. from Main Ave. showing (#92-97, 98, 99, 100, and 101) on west side of 8th St. and extreme right (#87) 806 Main.

Tom Jenkinson, Summer 1982, SHSND

Roll 60 Frame 29            northeast view



Downtown Fargo N.D. District

PHOTO # 14

Looking southwest from top of (#12)  
at NP RR tracks at mid-ground (#86)  
at 801 Main Ave. with (#87) Watkins  
Block at 806 Main (3 stories) in

rear

Tom Jenkinson, Summer 1982, SHSND

Roll 59 Frame 27A



Downtown Fargo N.D. District

PHOTO # 15

Looking southeast at NP RR tracks  
and open space and (#3) NP Depot  
at 701 Main Ave. with (#2) Block 6  
at 620 Main (5 stories) in rear.

northwest view

Tom Jenkinson, Summer 1982, SHSND

Roll 59      Frame 29A



Downtown Fargo N.D. District

PHOTO # 16

700 block of Main St. (#141, 85,  
and 84, left to right) and on right  
side of photo the unit block of  
8th St. S. from (#12) on north side  
of NP RR tracks. north view

Tom Jenkinson, Summer, 1982, SHSND

Roll 59 Frame 30A





Downtown Fargo N.D. District

PHOTO # 17

Looking north on 7th St. S. at  
(#105) 23 7th St. S. (left) and  
(#106) 17-21 7th St. S. with (#3)  
NP depot at 701 Main in right back-  
ground

Tom Jenkinson, Summer 1982, SHSND

Roll 60 Frame 25



LAW OFFICES  
SHERMAN & BUCK  
ATTORNEYS AT LAW  
CANTON, OHIO

PASS

Downtown Fargo N.D District

PHOTO # 18

Looking southwest from 4th Ave. N.  
and 5th St. S. at

(#44) Bristol Bldg. 322-24 5th St.

(#43) McCormick Bldg. 318- 20  
5th St. N. (left)

Tom Jenkinson, Summer 1982, SHSND

Roll 59 Frame 16A



CONTINENTAL  
BIG RED  
GROCERY

COLUMBIAN  
HOTEL

Downtown Fargo N.D. District

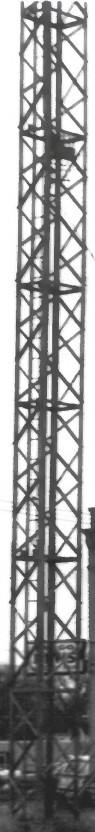
PHOTO # 19

Looking southeast from 5th Ave. N.  
at east side of 4th St. N. at  
(left) (#42) 413-17 4th St. S. and  
(right) (#41) 403-09 4th St. N.

Tom Jenkinson, Summer, 1982, SHSND

Roll 59      Frame 15A

northwest view



Downtown Fargo N. D. District

PHOTO # 20

Looking northwest from 5th Ave. N.  
at west side of Broadway at (#14,  
108, and 13), left to right at  
506-518 Broadway, inclusive

Tom Jenkinson, Summer, 1982, SHSND

Roll 59 Frame 13A

southeast view





Downtown Fargo N.D. District

PHOTO # 21

Looking east down 5th Ave. N. from  
Broadway at (#73) Rollo statue and  
(#74) Great Northern Depot, 536  
5th Ave. N. in background. Northern  
boundary of district in left middle  
ground.

Tom Jenkinson, Summer 1982, SHSND

Roll 59 Frame 12A



FARGO

FARGO SYLVESTER STALLONE  
THE FIRST BLOOD

W WARNER and COMPANY  
FARGO, N.D. 58101

FBI computer services

Age of Beauty

It's Don's  
State College of Beauty

OPEN

Downtown Fargo N.D. District

PHOTO # 22

Looking southwest at west side of  
Broadway at 4th Ave. N. at, right  
to left, (#19, 20, 114, and 06) at  
312-324 Broadway, inclusive  
Tom Jenkinson, Summer 1982, SHSND  
Roll 59 Frame 11A

northeast view



Downtown Fargo N.D. District

PHOTO # 23

West side of Broadway (Red River  
Mall) looking north from N.P. Ave.  
at, left to right, (#40, 39, 125,  
and 126) 52-62 Broadway, inclusive

Tom Jenkinson, Summer 1982, SHSND

Roll 59      Frame 34A

southeast view



Downtown Fargo N.D.

PHOTO # 25

Looking northwest from (#138) Lark  
Theater at 1st Ave. N. and Roberts  
St. intersection at (#72) U.S. Court  
house (left), (#1) A.O.U.W. Hall &  
(#71) Pioneer Block (right)  
Tom Jenkinson, Summer, 1982, SHSND

Roll 59 Frame 20A

southeast view





HOTEL POWERS HOTEL POWERS

COFFEE HOUSE

MYCHELARS

Downtown Fargo N.D. District

PHOTO # 26

West side of Broadway looking north  
from 4th Ave. N. at (#18) Powers  
Hotel at 400 Broadway and (#17,  
16, 111, and 110) into background  
left to right. southeast view

Tom Jenkinson, Dummer 1982, SHSND

Roll 59 Frame 8A

Since 1898

**COOK CO**  
**SIGN**

See Our New  
Sign At ...



**ROGER'S SANDWICH CO.**



Downtown Fargo N.D. District

PHOTO # 27

West side of Broadway at 2nd Ave. N.  
showing (#33) 202-04; (#32) 206;  
(#31) 208-10; (#30) 212; (#29) 214;  
and (#28 216-18 Broadway

southeast view

Tom Jenkinson, Summer 1982, SHSND

Roll 60 Frame 8



The Virginia Flora  
CORSET SHOP

CONTINENTAL  
CASH & CURRENCY  
WHOLESALE  
GOLD-SILVER  
PROBERS

Hamm's  
SPORTS BAR

THE VIRGINIA  
FLORA SHOP

V

SPORTS BAR

FARM  
MACHINERY

Downtown Fargo N.D. District  
PHOTO # 28

South side of 1st Ave. N. looking  
west from Broadway at (#64) Elliott  
Hotel Annex, 606-12 1st, parking  
lot, and (#135) Lark Theater, 630  
1st Ave. N. in background  
Tom Jenkinson, Summer 1982, SHSND  
Roll 60 Frame 18  
northeast view



Downtown Fargo N.D. District

PHOTO # 29

North side of 600 block of N.P. Ave.  
at 1-r (#135, 60, 59, 58, 57, 56)  
southwest view

Tom Jenkinson, Summer, 1982, SHSND

Roll 59 Frame 24A



# Scherling

PHOTOGRAPHERS

commercial  
weddings  
portraiture  
pass port



NO APPOINTMENT NECESSARY

WINGS

RENTALS  
WEEKLY  
MONTHLY

THE FARGOAN  
PERMANENT RESIDENCY

THE FARGOAN  
PERMANENT RESIDENCY

MR. POINT

MOOSE  
LODGE

Thanks to you it works ... FOR ALL OF US



Downtown Fargo N.D. District

PHOTO # 30

East side of Broadway from 4th Ave.  
N. looking at l-r: (#113) south  
half, (#21, 22, 23, 24, 25, 301-  
325 Broadway, inclusive.

Tom Jenkinson, Summer 1982, SHSND

Roll 59 Frame 8A northwest view



STONE

THE OFFICE PLACE  
GALLECO'S  
THE OFFICE PLACE

Schmitt  
music  
centers

OFFICE SYSTEMS  
GAFFANEY'S  
THE OFFICE PLACE  
WORD & DATA PROCESSING

Elie's  
BASKETRY CELEBRATION

ONE WAY

Downtown Fargo N.D. District

PHOTO # 31

North side of 1st Ave. N. looking  
west from Broadway r-1: (#68) Stone  
Block, (#69) Laing Block, (#70)  
Walker Block, and (#71) Pioneer  
Block, 613-37 1st Ave. N. , inclusive.

Tom Jenkinson, Summer 1982, SHSND

Roll 60      Frame 17 southeast view