

**United States Department of the Interior
National Park Service**

**National Register of Historic Places
Inventory—Nomination Form**

For NPS use only

received SEP 30 1986
date entered NOV 13 1986

Continuation sheet

Item number 7

Page 48

N-10,266

Property Name: R. Walker Barn

Location and Verbal Boundary Description:

The R. Walker Barn is located in Linden Knoll, a condominium complex at the northeast corner of Skyline Drive and Foxcroft Drive identified as Parcel Number 08-036.20-085. Within the condominium complex the site boundaries for the barn are defined by the curb of the driveway on the south and west sides of the barn, the R-1-C/R-4 zoning line on its north side, and a line that runs between the barn and a condominium building on the east. The boundaries are delineated on the attached maps titled, New Castle County Property Tax Map, 1985; and Record Land Development Plan for Linden Knoll, October 10, 1972. The site boundaries contain approximately 0.5 acres.

UTM Reference: 18/440320/4398670

Owner: Linden Knoll Homeowner's Association
c/o Howard Thorn
3604 Rustic Lane
Wilmington, Delaware 19808

Description:

The Barn is the only building contained within the site boundaries.

The R. Walker Barn is a circa 1835 tri-level, or double decker, frame structure on a stuccoed stone foundation with an original straw shed and bridge house. It has a gable roof with a late nineteenth century louvered cupola, and is sided with wood shingles over the original vertical sawn, vertical board spiked with cut nails. The stable side faces northeast. There is a two level shed-roofed addition on the southeast gable end, and a gable-roofed, two level wing on the northwest side of the northeast elevation.

The barn is divided into three equal bays, with a center bay entrance and a raised driveway which extends through the hay shed. The hay mows are sunken and there are no extant partitions beneath the driveway. Curved fieldstone retaining walls contain the entrance ramp to the bridge house that spans the gap between the barn and the ramp. Wagons could be driven under the bridge to load and unload goods and grain at the middle level of the barn.

Principal timbers (posts, plates, and girts) are hewn. Secondary timbers (rails, studs, and rafters) are sawn. The bents consist of four posts, which in the center bents extend to the hay mow floor, and in the end bents are just one level high. The end posts of the bents are flared and notched and carry the

**United States Department of the Interior
National Park Service**

**National Register of Historic Places
Inventory—Nomination Form**

For NPS use only

received

date entered

Continuation sheet

Item number 7

Page 49

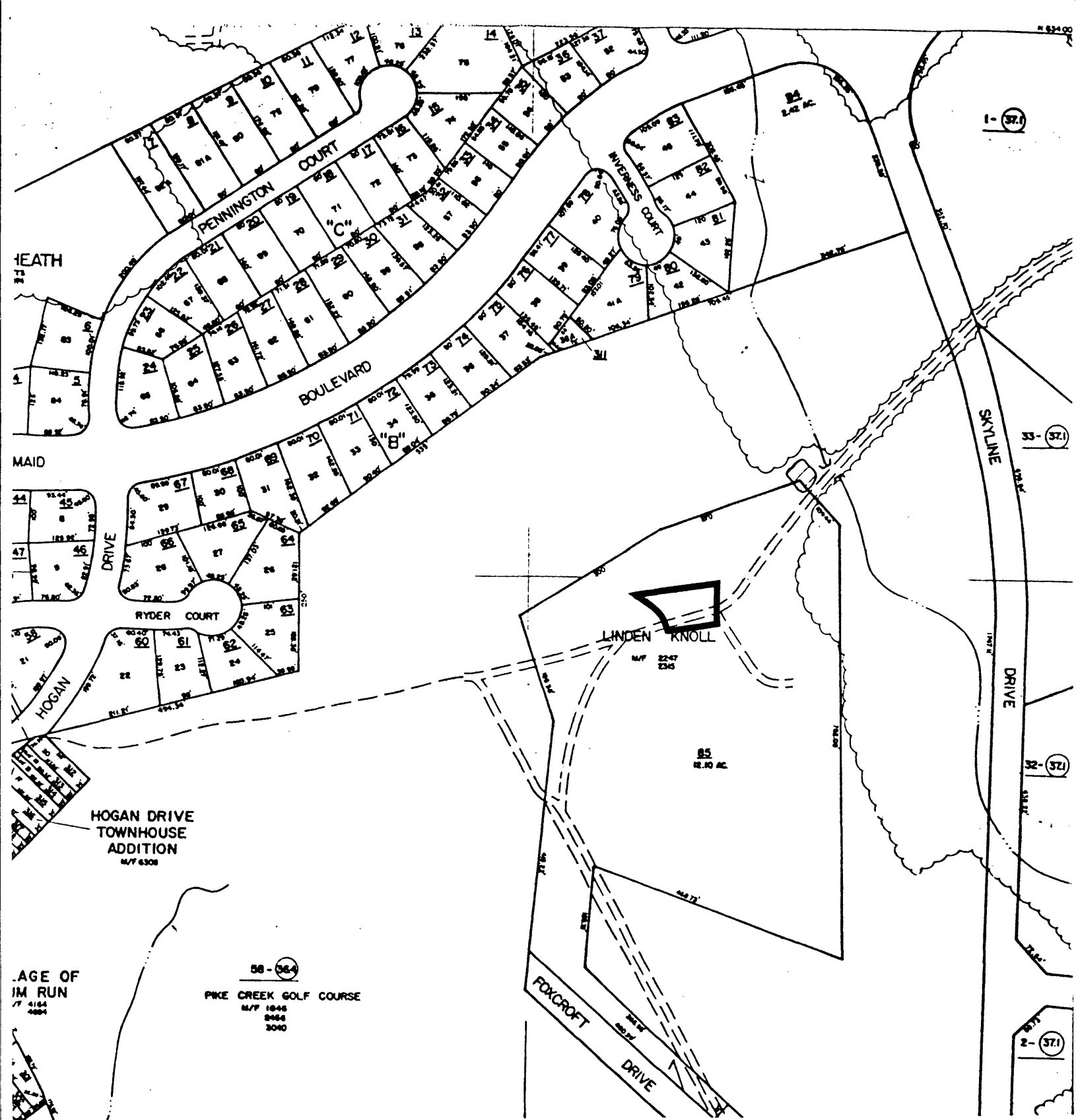
plate over the tie. In older barns, the tie usually overlaps the plate. Mortise and tenon joints are single pinned. The roof is gabled with bridled common rafters on principal purlins which are supported by angled and braced struts. These struts are not notched and flared, as they are in earlier barns.

The only scarf joint is a chisal-edged scarfed plate on the hay shed long wallover a notched post with two pins on either side of the post. The post is tenoned into the lower piece.

Significance:

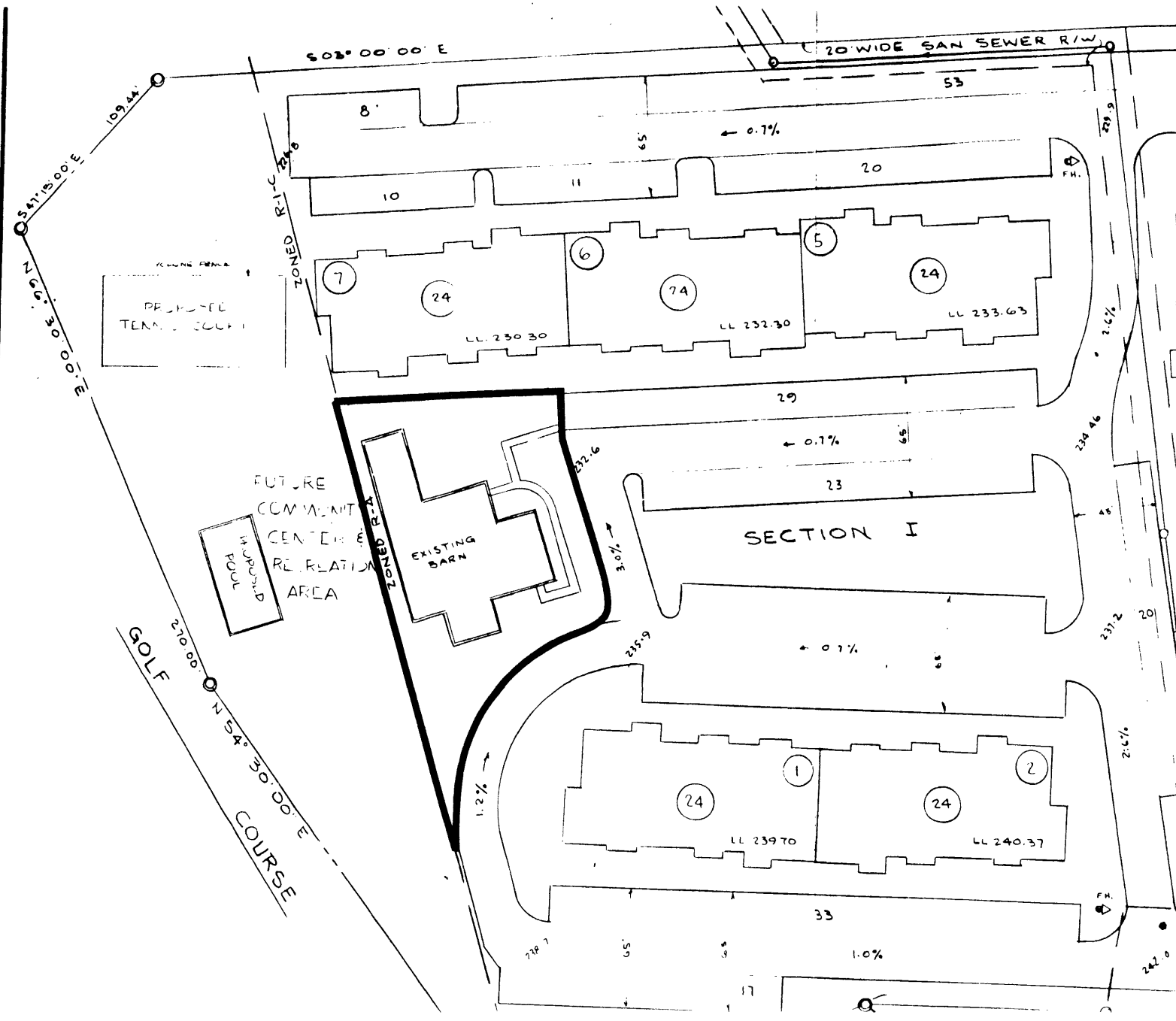
The significance of the R. Walker Barn is as an example of a transitional barn between the earlier varied barns and the regularized late barns. Transitional elements can be seen in the absence of the notched strut and in the changed use of the flared and notched post. With the placement of the plate over the girt it was possible for the bent to be raised as a unit; whereas the earlier barns were probably raised piece by piece.

Also important is the incorporation of the hay shed in the original structure as indicated by the lack of evidence for exterior siding and the similar framing techniques in the hay shed, in particular, the use of the flared post. The double decker form and the additions stress the primary importance of the barn as a multiple purpose building and focal point of the farm.



1" = 100'

N-10,266 R. Walker Barn
 New Castle County Property Tax Map, 1985
 Linden Knoll, Parcel Number 08-036.20-085



**N-10,266 R. Walker Barn
Record Land Development Plan
for Linden Knoll, Oct. 10, 1972**