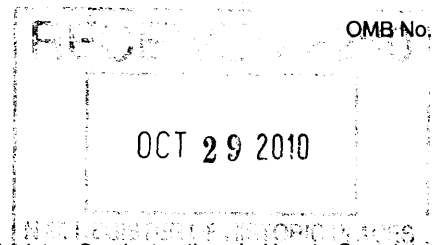


1033



United States Department of the Interior  
National Park Service

NATIONAL REGISTER OF HISTORIC PLACES  
REGISTRATION FORM

This form is for use in nominating or requesting determinations for individual properties and districts. See instructions in How to Complete the National Register of Historic Places Registration Form (National Register Bulletin 16A). Complete each item by marking "x" in the appropriate box or by entering the information requested. If any item does not apply to the property being documented, enter "N/A" for "not applicable." For functions, architectural classification, materials, and areas of significance, enter only categories and subcategories from the instructions. Place additional entries and narrative items on continuation sheets (NPS Form 10-900a). Use a typewriter, word processor, or computer, to complete all items.

1. Name of Property

historic name ORMOND FIRE HOUSE

other names/site number Ormond Beach Fire Station #91; Birthplace of Speed Museum; FMSF#VO840

2. Location

street & number 160 East Granada Boulevard N/A  not for publication

city or town Ormond Beach N/A  vicinity

state Florida code FL county Volusia code 127 zip code 32176

3. State/Federal Agency Certification

As the designated authority under the National Historic Preservation Act, as amended, I hereby certify that this  nomination  request for determination of eligibility meets the documentation standards for registering properties in the National Register of Historic Places and meets the procedural and professional requirements set forth in 36 CFR Part 60. In my opinion, the property  meets  does not meet the National Register criteria. I recommend that this property be considered significant  nationally  statewide  locally. ( See continuation sheet for additional comments.)

Barbara E. Mattick/DSHPO 10/21/2010  
Signature of certifying official/Title Date

Florida Department of State, Division of Historical Resources, Bureau of Historic Preservation  
State or Federal agency and bureau

In my opinion, the property  meets  does not meet the National Register criteria. ( See continuation sheet for additional comments.)

\_\_\_\_\_  
Signature of certifying official/Title Date

\_\_\_\_\_  
State or Federal agency and bureau

4. National Park Service Certification

- I hereby certify that the property is:
- entered in the National Register  See continuation sheet
  - determined eligible for the National Register  See continuation sheet.
  - determined not eligible for the National Register  See continuation sheet.
  - removed from the National Register.
  - other, (explain) \_\_\_\_\_

Edson H. Beall Signature of the Keeper Date of Action 12-15-10

**5. Classification**

**Ownership of Property**  
(Check as many boxes as apply)

- private
- public-local
- public-State
- public-Federal

**Category of Property**  
(Check only one box)

- buildings
- district
- site
- structure
- object

**Number of Resources within Property**  
(Do not include any previously listed resources in the count)

Contributing	Noncontributing	
1	0	buildings
0	0	sites
2	0	structures
1	0	objects
4	0	total

**Name of related multiple property listings**  
(Enter "N/A" if property is not part of a multiple property listing.)

**Number of contributing resources previously listed in the National Register**

"N/A"

0

**6. Function or Use**

**Historic Functions**  
(Enter categories from instructions)

GOVERNMENT: fire house

GOVERNMENT: correctional facility

\_\_\_\_\_

\_\_\_\_\_

\_\_\_\_\_

\_\_\_\_\_

\_\_\_\_\_

**Current Functions**  
(Enter categories from instructions)

COMMERCE: professional

\_\_\_\_\_

\_\_\_\_\_

\_\_\_\_\_

\_\_\_\_\_

\_\_\_\_\_

**7. Description**

**Architectural Classification**  
(Enter categories from instructions)

ECLECTIC

\_\_\_\_\_

\_\_\_\_\_

**Materials**  
(Enter categories from instructions)

foundation COQUINA STONE

walls COQUINA STONE

\_\_\_\_\_

roof ASPHALT

other \_\_\_\_\_

\_\_\_\_\_

**Narrative Description**

(Describe the historic and current condition of the property on one or more continuation sheets.)

**8. Statement of Significance**

**Applicable National Register Criteria**

(Mark "x" in one or more boxes for the criteria qualifying the property for National Register listing.)

- A** Property is associated with events that have made a significant contribution to the broad patterns of our history.
- B** Property is associated with the lives of persons significant in our past.
- C** Property embodies the distinctive characteristics of a type, period, or method of construction or represents the work of a master, or possesses high artistic values, or represents a significant and distinguishable entity whose components lack individual distinction.
- D** Property has yielded, or is likely to yield information important in prehistory or history.

**Criteria Considerations**

(Mark "x" in all the boxes that apply.)

Property is:

- A** owned by a religious institution or used for religious purposes.
- B** removed from its original location.
- C** a birthplace or grave.
- D** a cemetery.
- E** a reconstructed building, object, or structure.
- F** a commemorative property.
- G** less than 50 years of age or achieved significance within the past 50 years

**Narrative Statement of Significance**

(Explain the significance of the property on one or more continuation sheets.)

**9. Major Bibliographical References**

**Bibliography**

Cite the books, articles, and other sources used in preparing this form on one or more continuation sheets.)

**Previous documentation on file (NPS):**

- preliminary determination of individual listing (36 CFR 36) has been requested
- previously listed in the National Register
- previously determined eligible by the National Register
- designated a National Historic Landmark
- recorded by Historic American Buildings Survey # \_\_\_\_\_
- recorded by Historic American Engineering Record

**Areas of Significance**

(Enter categories from instructions)

ARCHITECTURE  
SOCIAL HISTORY

**Period of Significance**

1937-1960

**Significant Dates**

1937

**Significant Person**

N/A

**Cultural Affiliation**

N/A

**Architect/Builder**

MacDonough, Alan J., architect

**Primary location of additional data:**

- State Historic Preservation Office
- Other State Agency
- Federal agency
- Local government
- University
- Other

Name of Repository

# \_\_\_\_\_

Ormond Fire House  
Name of Property

Volusia Co., FL  
County and State

10. Geographical Data

Acreege of Property less than one acre

UTM References

(Place additional references on a continuation sheet.)

1 1 7 4 9 5 8 2 0 3 2 4 6 0 0 0  
Zone Easting Northing  
2

3 Zone Easting Northing  
4

See continuation sheet

Verbal Boundary Description

(Describe the boundaries of the property on a continuation sheet.)

Boundary Justification

(Explain why the boundaries were selected on a continuation sheet.)

11. Form Prepared By

name/title Andersen, Tanya, Jori Snell/Robert O. Jones, Historic Preservationist  
organization Bureau of Historic Preservation date October 2010  
street & number 500 South Bronough Street telephone 850-245-6333  
city or town Tallahassee state FL zip code 32399-0250

Additional Documentation

Submit the following items with the completed form:

Continuation Sheets

Maps

- A USGS map (7.5 or 15 minute series) indicating the property's location.
- A Sketch map for historic districts and properties having large acreage or numerous resources.

Photographs

Representative black and white photographs of the property.

Additional items

(check with the SHPO or FPO for any additional items)

Property Owner

(Complete this item at the request of SHPO or FPO.)

name OBFS, LLC c/o Gregory Snell  
street & number 160 East Granada Boulevard telephone 386.677.3232  
city or town Ormond Beach state FL zip code 32176

Paperwork Reduction Act Statement: This information is being collected for applications to the National Register of Historic Places to nominate properties for listing or determine eligibility for listing, to list properties, and amend listings. Response to this request is required to obtain a benefit in accordance with the National Historic Preservation Act, as amended (16 U.S.C. 470 et seq.).

Estimated Burden Statement: Public reporting burden for this form is estimated to average 18.1 hours per response including time for reviewing instructions, gathering and maintaining data, and completing and reviewing the form. Direct comments regarding this burden estimate or any aspect of this form to the Chief, Administrative Services Division, National Park Service, P.O. Box 37127, Washington, DC 20013-7127; and the Office of Management and Budget, Paperwork Reductions Projects (1024-0018), Washington, DC 20503.

**United States Department of the Interior  
National Park Service**

**NATIONAL REGISTER OF HISTORIC PLACES  
CONTINUATION SHEET**

Section number 7 Page 1

**ORMOND FIRE HOUSE, ORMOND  
BEACH, VOLUSIA CO., FLORIDA**

---

**SUMMARY**

The Ormond Fire House is located at 160 East Granada Boulevard in Ormond Beach, Volusia County, Florida. Construction was begun in 1936, and it was completed in 1937. It is an Eclectic Style building that reflects Spanish and Classical Revival architectural influences. The two-story building is brick with an exterior of coquina stone. There are keystones over all of the doors, windows and arches of the building. There is an engaged four-sided tower rising from the northeast corner of the building that is topped with an arched octagon-shaped watchtower with pyramidal roof. The main roof is cross gabled, shingled, with a small coquina rock chimney. The interior downstairs has all of the original primary walls, including the walls of the jail, garage bays and the police/fire chief office. Although walls have been added within the original walls to facilitate the current use, the basic layout and character of the original is largely retained.

From 1977 to 1995, the building was occupied by the "Birthplace of Speed" car-racing museum. There are three contributing objects that were a part of the original 1937 construction. They are a roadside monument fronting onto Granada Boulevard, coquina sign supports also fronting Granada Boulevard, and a coquina rock wall in the rear/southeast portion of the property. The Fire House is nominated under Florida's New Deal Resources, Multiple Property Submission; Historic Context: The New Deal in Florida, 1933-1943. Property Type F.1: Buildings.

**SETTING**

Ormond Beach, Florida, is located in Volusia County, approximately 62 miles northeast of Orlando and 84 miles south of Jacksonville. The 2000 census counted 36,301 people. Presently, the city encompasses about 29 miles and is located along the Halifax River lagoon and Atlantic Ocean.

When the fire house was built in 1937, Ormond was town on the Halifax River, covered a much smaller area, and was confined to the peninsula between the Halifax River and the Atlantic Ocean. A flat wooden bridge on Granada Avenue connected the peninsula with the mainland known as Ormond. In 1950, the two areas merged to form Ormond Beach. Granada Avenue, now Granada Boulevard, runs east-west from Interstate 95 to the Atlantic Ocean.

The fire house faces north on East Granada Boulevard and is one block from the Atlantic Ocean (Photo #1). This portion of Granada Boulevard is part of the Ormond Scenic Loop & Trail, which is a Florida Scenic Highway and National Scenic Byway. The property encompasses 19,300 square feet. Two one-way driveways leading from Granada Boulevard converge in the rear of the building and lead to Coquina Court. There are three parking spaces on the north/front of the building, and a parking area on the south/rear of the building.

**United States Department of the Interior  
National Park Service**

**NATIONAL REGISTER OF HISTORIC PLACES  
CONTINUATION SHEET**

Section number 7 Page 2

**ORMOND FIRE HOUSE, ORMOND  
BEACH, VOLUSIA CO., FLORIDA**

---

Many properties on the National Register of Historic Places are nearby including: The Ormond Yacht Club (NR 2005), The Anderson-Price Memorial Library (NR 1983), The Casements, John D. Rockefeller's winter estate (NR 1972), and more than a half dozen other private residences. Also, the sites of two now demolished landmarks, the Ormond Hotel and the Ormond Garage, have historic markers, and are on Granada Boulevard. The golf course on which Mr. Rockefeller frequently played, built in 1907 and now owned by Oceanside Country Club, is within view of the fire house. There are many contemporary buildings surrounding the fire house and the setting is much different now than in 1937.

**PHYSICAL DESCRIPTION**

**Exterior**

The exterior walls are surfaced with coquina stone. Windows are filled with 9/1 double-hung vinyl sashes. Keystones are over every door, arch, and window. The complex gable roof is surfaced with asphalt shingles.

The North Façade fronts onto Granada Boulevard (Photo #2). A front gabled extension of the building occupies the west half of the elevation, and the east half features a side gabled and arcaded porch. An engaged square tower rises three stories at the northwest corner. Topped with an open-arched, eight-sided cupola, the tower has four stages. The first story contains what appears to be two large bay doors with lights. The doors are actually fixed in place to serve as a wall. Buttresses flank the tower walls, and two exterior lamps flank the large doors. A sculpted, cast stone belt separates the tower's first and second stage. The second stage contains a window composed of three 9/1 sashes, and rises more than a story to almost the roof ridge height. The third stage rises above the roofline, and narrows with eight tapering sides that curve (Photo# 3). The exterior fabrics alternate between coquina and concrete. The fourth stage is a short, vertical eight-sided rise with coquina that is topped with two concrete steps narrowing to support the arcaded cupola which is capped with a round finial. Stepped back from the tower is the surface of the remainder of the gable end. At the first story is a window filled with three sashes which is repeated on the second story. At the peak of the gable is a round wood louvered vent.

The wall surface of the eastern half of the north elevation is stepped back from the surface of the western half. The eastern half has arcaded porches on both the first and second stories. Both arcades have three segmental arches. The building address number, "160," and two original lanterns are located at the central columns of the first story (Photos #4&5). Single French doors centered behind the central arches provide access to the building on the first and second story. Single windows are centered behind the eastern arches, and the western arch on the second story.

United States Department of the Interior  
National Park Service

NATIONAL REGISTER OF HISTORIC PLACES  
CONTINUATION SHEET

Section number 7 Page 3

ORMOND FIRE HOUSE, ORMOND  
BEACH, VOLUSIA CO., FLORIDA

---

At the west end of the first story porch is a single French door that serves as the main entrance into the reception room (Photo #6). The only remaining original window is in the north elevation adjacent to this door. A brick chimney rising from the center of the roof ridge is visible from the north elevation.

The West Elevation has an original coquina stone staircase to the second floor as well as a window into the large bay (Photo #7). Beneath the staircase are two arched openings. The opening under the steps might have been used to store fire wood. The original plans for the building did not include heat and the decision to add the furnace was made after construction started. Between the staircase and the tower is a window composed of a pair of sashes. There is a door on the second floor at the staircase landing that is flanked with two small windows. Two other windows with paired sashes are in the second story. The first stage/story of the tower contains a false arch with keystone, whose inter-space is surfaced with rubble coquina. The second stage of the tower contains a window with three sashes, like the north elevation.

The South, rear Elevation has a front gable extension occupying the west half, and the side gable block occupying the east half. In the front gable extension are what appears to be two large bay doors located at the west side of the extension. A large, 4'3" pipe with a faucet by the bay was used to fill the fire truck(s) with water. A single French door with single-light transom is in the center of the first story, and a 6/6 window is toward the east corner. The second story contains three windows. Two have single 6/1 sashes, and one toward the east corner has a pair of sashes. At the peak of the gable is a circular wooden vent with louvers. The east half of the elevation is set back from the gable end and has four single windows on the first story, and two windows on the second story. The window to the west has three sashes. A flight of step into a basement is located outside this east wall. The 15'X15' basement contains the furnace used to heat the fire house and jail.

The East Elevation has a gable end with a round louvered vent located at the peak of the gable (Photo #8). The elevation is dominated by a two-story, three-sided bay with a single sash window in each side and story. A three sided roof covers the bay, intersecting with the elevation above the second story window level. To the south on the first story are no windows while the second story has two single windows. To the north the two-story façade porch has an arch above each. Looking along the first story porch, a single French door entrance is visible (Photo #9).

**Interior**

The first floor originally contained two bays for fire and police vehicles, an office for the fire/police chief, and a jail. The second floor contained a living area for the police chief, and in the

**United States Department of the Interior  
National Park Service**

**NATIONAL REGISTER OF HISTORIC PLACES  
CONTINUATION SHEET**

Section number 7 Page 4

**ORMOND FIRE HOUSE, ORMOND  
BEACH, VOLUSIA CO., FLORIDA**

---

west half of the building over the vehicle bays was the living area for the firemen and their office was in the tower.

First Floor

The entrance to the building is through a French door (Photo #9) on the west side of the arcaded porch into a reception room that had originally been a vehicle bay. The walls are plaster and the floor is wooden. A door to the west (Photo #10) opens into a conference room that had been a fire truck bay. The walls are brick and stone, and the floor is concrete (Photo #11). Through a partition with door with transom is a longer conference room that occupies the rest of the fire truck bay to the south. In this conference room are two non-historic doors through the east wall. At the south end of the reception area is a staff service area with a door in the south wall that enters the firemen's fire-fighting gear storage area and fire pole access from the second floor. An exit door to the south is in this storage room. To the east of the reception area is a hall that leads to the fire and police chief's office with the three-sided bay window, now a conference room. A door off the façade porch enters this hall space. A dog-legged stairway rises against the north exterior wall near the porch door. The jail space houses two offices and a bathroom between them. The office to the southeast has an original jail door frame (Photo #12). A non-historic door enters the office at the west side of the jail space.

Second Floor

The dog-legged stairway turns southward and rises to a landing located in the center of the floor. From this landing two short stairs rise to the east and west, to what had been the police chief's quarters (Photo #13), and the fireman's quarters respectively. Doors at the top of the two stairs probably closed off the two sides. The floor is filled with offices. To the east a central hall and circulation area accesses a refurbished bathroom to the north, and a door onto the second-story porch. An office to the east has the bay windows. The west side has an unusual octagonal central circulation area from which hallways to the north and south, offices, and a kitchen/break-room radiate from. A bathroom is off the hall to the south. The kitchen and bathroom are refurbished but in their historic locations. A door enters the kitchen from the exterior stairway on the west elevation. An office is located in the tower, where the firemen had their office (Photo #14). The firemen slept at the south side of the floor, and the floor's southeast room had a fireman's pole in the corner.

Some of the architectural features related to the building's use as a fire station, police station and jail remain. They include the jail door frame, an emergency phone on the front porch, a combination lock key holder on one of the columns of the first floor porch, and a water pipe and faucet alongside the drive at the rear of the building. The last fire pole in use has been incorporated into the ceiling light fixture in the large conference room. The original jail cell walls remain, the



**United States Department of the Interior  
National Park Service**

**NATIONAL REGISTER OF HISTORIC PLACES  
CONTINUATION SHEET**

Section number 7 Page 5

**ORMOND FIRE HOUSE, ORMOND  
BEACH, VOLUSIA CO., FLORIDA**

---

thickness of which is obvious when looking at either of the two doorways. A shower in the quarters of the police chief remains in what is still a bathroom. The tower appears to have originally housed a siren as well as an access entry from the second floor. The original furnace, in disrepair, remains in the basement. There is also an emergency generator to the south of the building that was added at some point to afford emergency power.

#### **ALTERATIONS**

The most prominent alterations to the building were to the two large bays originally built for fire and police vehicles. Sometime prior to 1972, the smaller bay was enclosed with the bank of three sashes. In 1972 the fire department installed two pairs of wooden doors in the large fire truck bay. One set was installed at the north and south ends of the large bay. These were replaced with the current walls that look like doors in 2007. The bay's arch and cornice corners which were squared off by the city in 1995 after the Museum of speed moved out and fire trucks reused the space. The fire department also divided the large bay space with a partition, to use the south end as an office. In 2007, a new partition was installed to create the conference room. The main entrances into the building were through the north side arches. The central door opened into the police/jail facility. A door to the west of it is now sealed up with stone, and was probably closed sometime during the occupancy of the museum. It had been an entrance to the stairs and second floor for the police chief and firemen. The lamps flanking the big bay were substituted in the 1940s for ones that matched the originals still on the porch arches. Exterior doors were installed in 2008, and windows were replaced by the city in 1996. The windows are with the same spaces and configurations as the originals. The small wooden window on the first story porch is the only original window.

At the south elevation, beside the bay, the door was installed in 2007 in a space where a window had been. The window to the east of the door was re-installed in its original location. The firemen had installed a door where this window is to provide an exit next to the fireman pole. In 1997, the bars on the east side windows were removed.

The interior retains most of its original spatial use arrangements. As of 2007, new floor surfaces have been added, as well as lighting, kitchen and bathroom components. New partition walls have introduced a new bathroom into the jail space. The south end of the reception area has a few wall divisions to provide storage areas. Bathrooms on the second floor have been redone, and wall divisions have created new offices.

**United States Department of the Interior  
National Park Service**

**NATIONAL REGISTER OF HISTORIC PLACES  
CONTINUATION SHEET**

Section number 7 Page 6

**ORMOND FIRE HOUSE, ORMOND  
BEACH, VOLUSIA CO., FLORIDA**

---

The front monument that sits adjacent to Granada Boulevard was built in 1937 (Photo #1). It remains unaltered and is made of the same coquina stone as the fire house. The center of the monument is an octagon with one large octagon at the base and five successively smaller octagons on top. There are curved walls coming from the center with pylons on each end. On the interior is a small standing area with a couple of curved steps to ground level from just within the pylons from one side to the other. Similarly, there are two curved steps in the front of the monument of much smaller size, extending slightly beyond the octagon shaped base on each side. There are also two side pieces next to the pylons on the monument which slope outward from about halfway up in a roughly 45 degree angle to the ground. It appears that there was originally a tall pole at the top of the monument.

**STONE WALL**

There is a coquina stone wall of approximately 3 feet high built during the original construction that runs along the western property line. The wall begins near the southwest corner of the building until reaching the southern boundary line where it turns to the left at an east southeast angle prior to ending before the exit driveway onto Coquina Court. There are pylons on each end of the wall and in the juncture where the wall changes direction. The pylons are approximately 1 foot higher than the wall with caps. The pylon closest to the drive is in some disrepair. The wall also has a cap which peaks in the middle and slopes slightly down over the edge of the wall on each side.

**SIGN**

A roadside stone sign reading "Snell Legal" displays the name of the law firm currently housed in the building since 2008. The sign is supported by two original coquina stone pylons with caps that supported the former fire station sign.

**United States Department of the Interior  
National Park Service**

**NATIONAL REGISTER OF HISTORIC PLACES  
CONTINUATION SHEET**

Section number 8 Page 1 **ORMOND FIRE HOUSE, ORMOND  
BEACH, VOLUSIA CO., FLORIDA**

---

**SUMMARY**

The Ormond Fire House is nominated to the National Register for local significance under Criteria A and C in the areas of Social History and Architecture. The building was completed in 1937 as a Works Progress Administration (WPA) project. The building was designed by architect Alan J. MacDonough, and is the only WPA project in Ormond Beach. It was originally built and used as a municipal building, housing the police and fire stations. The fire house was also used over the years by the City of Ormond Beach as a polling station and a casualty station during World War II. The building is a landmark with its staged tower with cupola. It has an Eclectic design borrowing from Mediterranean and Classical Revival Styles and elements. Its use of locally quarried and distinctive coquina stone marks it as being an east coast Florida creation.

From 1977 to 1995, the Birthplace of Speed Museum occupied the building. The museum documented the history of auto racing in the area. It was during the occupancy of the museum that some spatial alterations occurred.

**HISTORIC CONTEXT**

Hostilities during the Second Seminole War delayed settlement in this region of East Florida until after 1842. In 1875, a settlement that would become Ormond Beach was founded under the name New Britain by inhabitants from New Britain, Connecticut. The town was incorporated in 1880 and named Ormond for a prominent colonial period plantation family.<sup>1</sup>

The St. Johns & Halifax Railroad arrived in Ormond in 1886, and the first bridge across the Halifax River was created in 1887. John Anderson and James Downing Price opened the Ormond Hotel on January 1, 1888. Henry Flagler bought the hotel in 1890 and expanded it to 333 rooms. It would be one in a series of Gilded Age hotels catering to passengers aboard his Florida East Coast Railway, which had purchased the St. Johns & Halifax Railroad. With the hotel, Ormond began to attract the tourist trade. With its beach, river excursions, fishing, and an eighteen hole golf course, Ormond became popular for the wealthy seeking relief from northern winters. A landmark and economic stimulus to the area, the Ormond Hotel, listed in the National Register of Historic Places in 1980, was demolished in 1992.<sup>2</sup>

One of Flagler's guests at the Ormond Hotel was his former business partner at the Standard Oil Company, John D. Rockefeller. Rockefeller arrived in 1914, and after four seasons at the hotel bought an estate called "The Casements." It would be Rockefeller's winter home during the later

---

<sup>1</sup> Strickland, Alice. *The Valiant Pioneers*. Miami, Center Printing, Co., 1963: 29,51.

<sup>2</sup> Strickland: 65,66.

**United States Department of the Interior  
National Park Service**

**NATIONAL REGISTER OF HISTORIC PLACES  
CONTINUATION SHEET**

Section number 8 Page 2 **ORMOND FIRE HOUSE, ORMOND  
BEACH, VOLUSIA CO., FLORIDA**

---

part of his life. Sold by his heirs in 1939, it was purchased by the city in 1973, and now serves as its cultural center. It is the community's best known historical building. Many of the early tourists owned automobiles, a new invention. With the available hard sand and straight beach, cars were tried on them and in 1902, some of the country's first races were held between Ormond and Daytona Beach. The American Automobile Association brought timing equipment to Ormond, and early records were set. The area was given the nickname, the "birthplace of speed." In areas, driving is still permitted on the beach. The city name was expanded to Ormond Beach in 1949.<sup>3</sup>

**HISTORIC SIGNIFICANCE**

The Ormond Fire House was completed in 1937 in the middle of the New Deal era. Like the rest of the country, Ormond was suffering the devastating effects of the Great Depression, including high unemployment rates and little tourism activity (a major industry in the area). In addition, the Bank of Ormond, which was the only bank in town, closed its doors in 1929. There were no other banks in the town for the next 25 years.<sup>4</sup> In the midst of this depression, the federal New Deal agency known as the WPA provided help to the ailing Daytona Beach and Ormond economies through construction projects and employment of some of the citizens. On November 27, 1935, the WPA permitted funding for a new fire station on Granada Avenue. The project was approved by the WPA for the sum of \$12,467.<sup>5</sup> Although the WPA built several projects in and around the Ormond area, the fire house was the only WPA building in Ormond.

The building was built of brick, with space for two fire trucks and equipment, an office to be shared by the police and fire chiefs (although only one person filled both positions at the time) a jail, and sleeping and recreational quarters on the second floor for the firemen. Fortunately for the first residents of the fire house, during the latter stages of construction the town managers decided to heat it at additional expense. The labor associated with installing the heating system was to be done by day laborers.<sup>6</sup> Construction commenced on July 18, 1936, and employed about 52 local WPA workers.<sup>7</sup> On October 14, 1937, after roughly fifteen months of construction, the fire and police departments moved into the new building. The total cost of the project was reported as \$22,000 with Ormond contributing monies in addition to what was provided through the WPA. Although it was initially reported that it would be built of brick it was actually built of brick with a coquina stone exterior. Similarly, although initially reported that there would be only sleeping and recreation quarters for the firemen on the second floor, there were actually separate quarters

---

<sup>3</sup> Strickland: 68,69,95,96,103.

<sup>4</sup> Strickland, Alice. Ormond-on-the-Halifax, A Centennial History of Ormond Beach, Florida, Holly Hill: Southeast Printing & Publishing Co., 1980: 95.

<sup>5</sup> "13 Projects in Volusia-Flagler Gain U.S. Okeh." Daytona Beach News Journal. 28 Nov. 1935: 1.

<sup>6</sup> "Move to Heat Fire Station." Daytona Beach Morning Journal. 13 July 1937: 2.

<sup>7</sup> "Work on Ormond Fire House Begins." Daytona Beach News Journal. 18 July 1936: 2.

United States Department of the Interior  
National Park Service

NATIONAL REGISTER OF HISTORIC PLACES  
CONTINUATION SHEET

Section number 8 Page 3 **ORMOND FIRE HOUSE, ORMOND  
BEACH, VOLUSIA CO., FLORIDA**

---

upstairs for the police/fire chief at the time, Daniel Whitehurst, as well as the firemen.<sup>8</sup> The new jail had its first prisoner later that first evening when a local man named Sam Davis was imprisoned for drunk and disorderly conduct.<sup>9</sup>

Not long before the fire house was built, Ormond relied on a volunteer fire department and a hand drawn hose rack to fight fires. However, by the time the fire house was built, a fire truck had been obtained. The new fire house was considered a model for other towns similar in size to Ormond. For the first time the facility allowed for the development of a formal fire department that was located under the same roof with the police department and the local jail. This consolidated location created a more efficient system of public safety for the town of Ormond and surrounding areas for years to come.

In 1940, the police department added its first motorcycle patrolman, Cauley Whitehurst, the son of Chief Whitehurst.<sup>10</sup> It has been reported that the fire house, soon after the bombing of Pearl Harbor in 1941, served an additional function, when its tower was used by civil defense members as a look-out for enemy submarines. However, to date no independent corroboration of this has been found.<sup>11</sup> It has been verified, however, that the fire house served as a raid casualty station during World War II in the event emergency medical treatment was necessary. There were many of these stations and they were staffed by volunteers trained by the Red Cross.<sup>12</sup> The fire house also served as a polling station for local elections for many years.<sup>13</sup>

From 1947<sup>14</sup> to 1971, there was a 125,000 gallon metal municipal water tower on the fire house property behind the jail area on the south portion of the property. This water tower was built to serve the peninsula portion of Ormond, which is the area between the Halifax River and the Ocean. At some point "Ormond Beach" was painted on the side. As late as 1972, there was no drive along the east side of the fire house, presumably because of the water tower which stood in the way.<sup>15 16</sup> As of 1949, there was a goldfish pool near the fire house which was repaired to allow for the return

---

<sup>8</sup> "Ormond to Have Model Fire Station." Daytona Beach News Journal. 3 Oct. 1937: 16.

<sup>9</sup> "He 'Breaks In' the New Jail." Daytona Beach News Journal. 15 October 1937: 1.

<sup>10</sup> "Ormond to Hire a Motorcycle Patrolman." Daytona Beach Morning Journal. 7 Feb. 1940: 1.

<sup>11</sup> Ormond Scenic Loop & Trail Corridor Management Plan/Designation Application, submitted May, 2007 to Florida Department of Transportation, Section 5, Corridor Story.

<sup>12</sup> "22 Sites Selected for Aid Stations." Daytona Beach Morning Journal, 11 Mar. 1942: 1.

<sup>13</sup> "Only One Ticket in Ormond's Election Today." Daytona Beach Morning Journal. 4 April 1939: 3.

<sup>14</sup> "Finishing Touches on Ormond's New Peninsula Water Tank to Complete \$60,000 Project." Daytona Beach Morning Journal. 23 May 1947: 1.

<sup>15</sup> "No Contract on Water Tower." Daytona Beach News Journal. 4 Aug. 1971: 13.

<sup>16</sup> "Ormond Bond Program Up for Vote." Daytona Beach Morning Journal. 13 May 1972: 5.

United States Department of the Interior  
National Park Service

NATIONAL REGISTER OF HISTORIC PLACES  
CONTINUATION SHEET

Section number 8 Page 4 **ORMOND FIRE HOUSE, ORMOND  
BEACH, VOLUSIA CO., FLORIDA**

---

of the fish after they had been removed to two other fish pools at the nearby Ormond Art Gallery, now known as the Ormond Memorial Art Museum and Gardens.<sup>17</sup>

In 1949, the town managers authorized the purchase of a new fire truck,<sup>18</sup> which was likely the truck which in 1972 was reported as barely fitting in the large garage bay. In 1958, the fire/police chief stopped residing in the fire house.<sup>19</sup> The city's fire station, police station and jail were located in the fire house until 1975. In 1975, the main police station was moved into a new facility on the mainland of Ormond Beach, but the fire station and a police substation remained. The firemen temporarily stopped using the building in 1976 and instead used a separate structure constructed on the premises behind the building. By this time the fire station was known as Ormond Beach Fire Station #91. After the fire department's relocation, The Birthplace of Speed Museum moved into parts of the first and second floors of the building in 1977. In 1983, the Volusia County emergency services department ("EVAC") relocated to the second floor of the building and EVAC personnel resided on the premises. As of 1995, the jail windows remained barred, the metal doors solid and barred, and sinks and toilets, albeit rusting, remained in the cells.<sup>20</sup>

In 1995, the museum closed and vacated the building.<sup>21</sup> The museum had occupied the building continuously from when it started in 1977,<sup>22</sup> with the exception of an approximate fifteen month period prior to December 1981.<sup>23</sup> Following the departure of the museum, a fire truck was again kept in the large bay and firemen slept upstairs. This continued until November 2006, when the firemen vacated the building to occupy a new building on nearby highway A1A. Soon after this, renovations were begun for the current use, which were completed in early 2008 when the current occupants moved in.

#### ARCHITECTURAL CONTEXT

The Mediterranean Revival Style is an eclectic style containing elements from Spanish or Middle-eastern traditions. The style is found in the states that have a Colonial Spanish history, and was popular in Florida from the late 1910s into the 1930s. A Florida building boom in the 1920s proved the popularity of the style that was applied to buildings of all functions, from cottages to

---

<sup>17</sup> "Ormond's Fishpool to be Repaired." *Daytona Beach Morning Journal*. 2 April 1949: 1.

<sup>18</sup> "Ormond Plans United Front on FPL Rates." *Daytona Beach Morning Journal*. 5 Jan. 1949: 2.

<sup>19</sup> "New Police-Fire HQ No. 1." *Daytona Beach Sunday News Journal*. 22 April 1972: 9.

<sup>20</sup> "Old Building Makes Room for Trio." *Daytona Beach News Journal*. 5 Jan. 1985: C1.

<sup>21</sup> "Stanley Steamer to Roll into Showcase of Daytona USA." *The News-Journal*. 25 April 1996: C2.

<sup>22</sup> "Birthplace of Speed Museum to Open Tuesday in Ormond." *Daytona Beach Sunday News Journal*. 30 Oct. 1977: B1.

<sup>23</sup> "Speed Museum to Reopen Doors Next Month." *Daytona Beach Morning Journal*. 28 Nov. 1981: C2.

**United States Department of the Interior  
National Park Service**

**NATIONAL REGISTER OF HISTORIC PLACES  
CONTINUATION SHEET**

Section number 8 Page 5 **ORMOND FIRE HOUSE, ORMOND  
BEACH, VOLUSIA CO., FLORIDA**

---

grand hotels. Mission and Spanish styles are variants encompassed by the style. The style is characterized by shaped roof parapets, red tile roofs, and an asymmetrical facade attached to a simple rectangular plan. Openings are often arched; support columns are enlarged and square; walls are usually stucco. Ornamentation is commonly used to accent doors and window and is usually accomplished with decorated tile, terra cotta, carved stone or wrought iron.

The Classical Revival Style evolved from an interest in the architecture of ancient Greek and Roman cultures. A revival of the style was spurred by the World's Columbian Exposition, held in Chicago in 1893. In Florida, Neo-Classical became a popular design approach for commercial, government, and public buildings. The application of the style to residences is less common. Characteristics of the style include a symmetrical facade dominated by a full height portico or porch with columns, typically executed with Corinthian, Doric, or Ionic capitals. Commercial models often lend themselves to the Temple Front decorative nomenclature, while public buildings, such as churches, display traditional symmetrical lines accented by a staged tower, belfry, and steeple. Gable or hip roofs pierced with dormers and chimneys are finished with cornice returns or boxed eaves, and frequently dentils or modillions set in a wide frieze band accent the eaves. Wooden doors are paneled, have transoms, and double-hung sash windows with six or nine panes per sash, provide natural interior lighting. Keystones were widely used in Roman arch construction and copied into revival styles.

**ARCHITECTURAL SIGNIFICANCE**

The Ormond Fire House is a historic landmark in an area typified by contemporary construction. With its three-story tower and stone exterior, the building is distinctive and has a sense of solidity that connotes its municipal service function. The Ormond Fire House is an eclectically designed institutional building that borrows, and creatively manipulates, elements from several formal styles. Borrowed from Classical architecture are the keystones over doors, windows and arches, and the ornamentation of the ocular louvered vents. The arcaded porches; corner buttress by the main fire truck bay; and thick, square columns between the arches reflect Mediterranean Revival influence. The use of coquina stone, native to east-coast central Florida, evokes the Spanish Colonial architecture of the region. Multiple-light 9/1 sashes are in keeping with the popular early Twentieth Century Craftsman and Prairie Styles, as is the grouping of sashes within large windows. The cupola that tops the tower is a Classical Revival feature developed during the Renaissance. The corbels flanking the segmented arches serve more as capitals to the columns, than as a spring-lines and support for the arches. The upper stages of the tower are octagonal with the third stage tapering and alternating between concrete and coquina sections. The alteration of coquina and concrete displays the inventiveness of the architect. Repeating the octagonal top stages of the

**United States Department of the Interior  
National Park Service**

**NATIONAL REGISTER OF HISTORIC PLACES  
CONTINUATION SHEET**

Section number 8 Page 6 **ORMOND FIRE HOUSE, ORMOND  
BEACH, VOLUSIA CO., FLORIDA**

---

tower is the octagonal central element to the monument at the corner of the property on Granada Boulevard.

The Fire house was the only WPA built building in Ormond, and is the only coquina stone public building in Ormond. In 1987, it was designated a City of Ormond Beach historic landmark by the City Commission (Photo #15).<sup>24</sup> When the City of Ormond Beach recently designed and installed a city entrance market they admittedly borrowed from the fire house design. The Ormond Fire House retains its architectural integrity and character to a high degree, and is in excellent condition.

**ARCHITECT**

The architect has recently been confirmed as Alan J. MacDonough.<sup>25</sup> He is a master designer who has had a big impact on Central Florida construction. MacDonough was the architect on at least a half dozen buildings already on the National Register, including the Holly Hill Municipal Building, the Daytona Beach Bandshell and Oceanfront Park Complex, the City Island in Volusia County, Ferran Park and the Alice McClelland Memorial Bandshell in Eustis, the Lake County Courthouse, and the Woman's Club of Eustis. He was born on November 1<sup>st</sup>, 1883, in Phoenixville, Pennsylvania, to Edward A. and Margaret Quay MacDonough. He was educated at Penn and the Drexel Institute in Philadelphia and worked for an engineering company and a couple of bridge companies in Ohio prior to moving to Kissimmee, Florida, in 1910.

He married Lillian E. Porter in Kissimmee on July 11, 1912. Soon after marrying, he moved to Lakeland in Polk County, and then moved back to Eustis in Lake County in 1920. He then proceeded to design most of the important buildings in Lake County, including those mentioned above as well as the Leesburg City Hall, the Eustis City Hall, the Eustis Theatre Building, the Clermont High School, the Masonic Temple in Leesburg, the Eustis Grade School and many fine residences. He was credited with designing over 100 buildings in Lake County alone, most of considerable size. He was also principal owner and secretary of the Harris MacDonough Company of Eustis, which sold lumber and building materials. He was a member of the Florida Association of Architects and the Rotary Club of Eustis, and was also a Mason and a Shriner.<sup>26</sup>

MacDonough was also the architect for other significant buildings built in Daytona Beach, including the Peabody Auditorium (one of two architects) and the Streamline Hotel, where the

---

<sup>24</sup>Historic Properties Survey of Ormond Beach, Florida. St. Augustine: Historic Property Associates, Inc., 1986.

<sup>25</sup>"Ormond Board Frowns on Street Change." *Daytona Beach Morning Journal*. 7 July 1937: 2.

<sup>26</sup> Kennedy, William Thomas. *History of Lake County Florida*, St. Augustine: The Record Co. 1929.



**United States Department of the Interior  
National Park Service**

**NATIONAL REGISTER OF HISTORIC PLACES  
CONTINUATION SHEET**

Section number

8

Page

7

**ORMOND FIRE HOUSE, ORMOND  
BEACH, VOLUSIA CO., FLORIDA**

---

National Association for Stock Car Auto Racing ("NASCAR") was founded.<sup>27</sup> The Bandshell and Holly Hill Municipal Building mentioned above were both WPA projects and made of coquina stone like the Ormond Fire House.

---

<sup>27</sup> "MacDonough to Design Low Rent Units." Daytona Beach Morning Journal. 14 Dec. 1949: 1.

**United States Department of the Interior  
National Park Service**

**NATIONAL REGISTER OF HISTORIC PLACES  
CONTINUATION SHEET**

Section number 9 Page 1 **ORMOND FIRE HOUSE, ORMOND BEACH  
VOLUSIA COUNTY, FLORIDA**

---

**BIBLIOGRAPHY**

Daytona Beach Morning Journal. 7 July 1937; 13 July 1937; 4 April 1939; 7 Feb. 1940; 11 Mar. 1942; 23 May 1947; 5 Jan. 1949; 2 April 1949; 14 Dec. 1949; 13 May 1972; 28 Nov. 1981.

Daytona Beach News Journal. 28 Nov. 1935; 18 July 1936; 3 Oct. 1937; 15 Oct. 1937; 5 Jan. 1985.

Daytona Beach Sunday News Journal. 4 Aug. 1971; 22 April 1972; 30 Oct. 1977.

“Historic Properties Survey of Ormond Beach, Florida,” St. Augustine: Historic Property Associates, Inc., 1986.

Kennedy, William Thomas. History of Lake County Florida. St. Augustine: The Record Co., 1929.

The News-Journal. 25 April 1996.

“Ormond Scenic Loop & Trail Corridor Management Plan/Designation Application,” submitted May, 2007 to Florida Department of Transportation, Section 5, Corridor Story.

Strickland, Alice. Ormond-on-the-Halifax, A Centennial History of Ormond Beach, Florida. Holly Hill: Southeast Printing & Publishing Co., 1980.

Strickland, Alice. The Valiant Pioneers, Miami: Center Printing Co., 1963.

**United States Department of the Interior  
National Park Service**

**NATIONAL REGISTER OF HISTORIC PLACES  
CONTINUATION SHEET**

Section number 10 Page 1 **ORMOND FIRE HOUSE, ORMOND BEACH,  
VOLUSIA COUNTY, FLORIDA**

---

**VERBAL BOUNDARY DESCRIPTION**

East 100 feet of the West 300 feet of Lot 9. Assessors Ormond Beach PER OR 5447 PG 4272-4273.

The Township, Section and Range are: T 14, S 14, R 32.

The Tax Parcel Number is # 141432305090030.

**BOUNDARY JUSTIFICATION**

The described property is historically associated with the Ormond Fire House.

**United States Department of the Interior  
National Park Service**

**NATIONAL REGISTER OF HISTORIC PLACES  
CONTINUATION SHEET**

Section number      Photo      Page      1      **ORMOND FIRE HOUSE, ORMOND  
BEACH, VOLUSIA COUNTY, FL**

---

1. Ormond Fire House, 160 E. Granada Blvd., Ormond Beach
2. Volusia County, Florida
3. Tanya Andersen
4. June, 2010
5. 160 E. Granada Blvd., Ormond Beach
6. Main, north façade, looking southeast
7. Photo #1 of 15

Items 1-5 are the same for the remaining photographs.

6. Main, north façade, looking south
7. Photo #2 of 15
  
6. Cupola, looking south
7. Photo #3 of 15
  
6. North façade, porch entrance, looking south
7. Photo #4 of 15
  
6. Original exterior lamp, looking east
7. Photo #5 of 15
  
6. Arch and porch main entrance, looking southwest
7. Photo #6 of 15
  
6. North and west elevations, looking southeast
7. Photo #7 of 15
  
6. East elevation, bay detail, looking west
7. Photo #8 of 15
  
6. East elevation, porch and main door, looking west
7. Photo #9 of 15
  
6. Interior of big bay looking into reception area, looking east
7. Photo #10 of 15

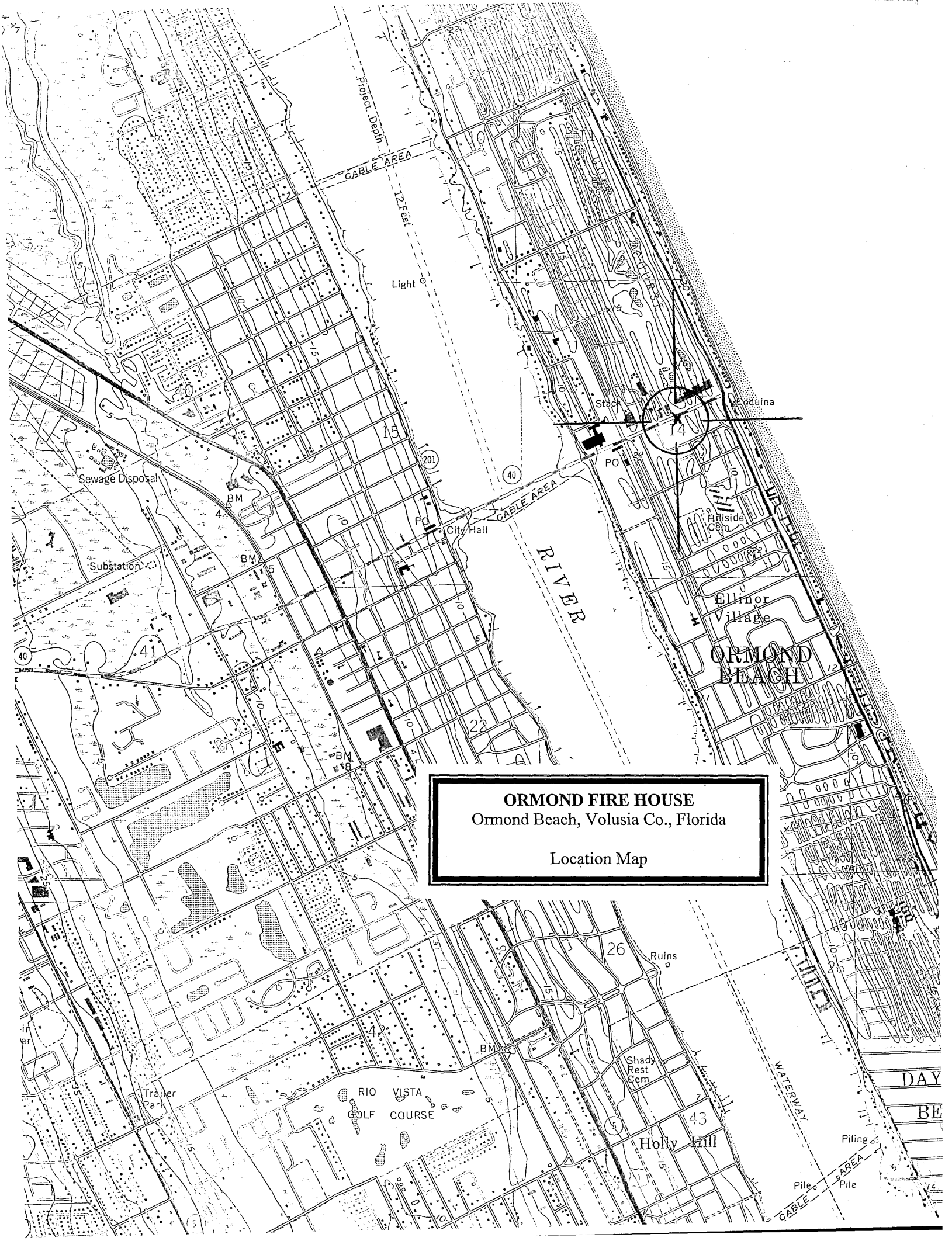
**United States Department of the Interior  
National Park Service**

**NATIONAL REGISTER OF HISTORIC PLACES  
CONTINUATION SHEET**

Section number      Photo      Page      2      **ORMOND FIRE HOUSE, ORMOND  
BEACH, VOLUSIA COUNTY, FL**

---

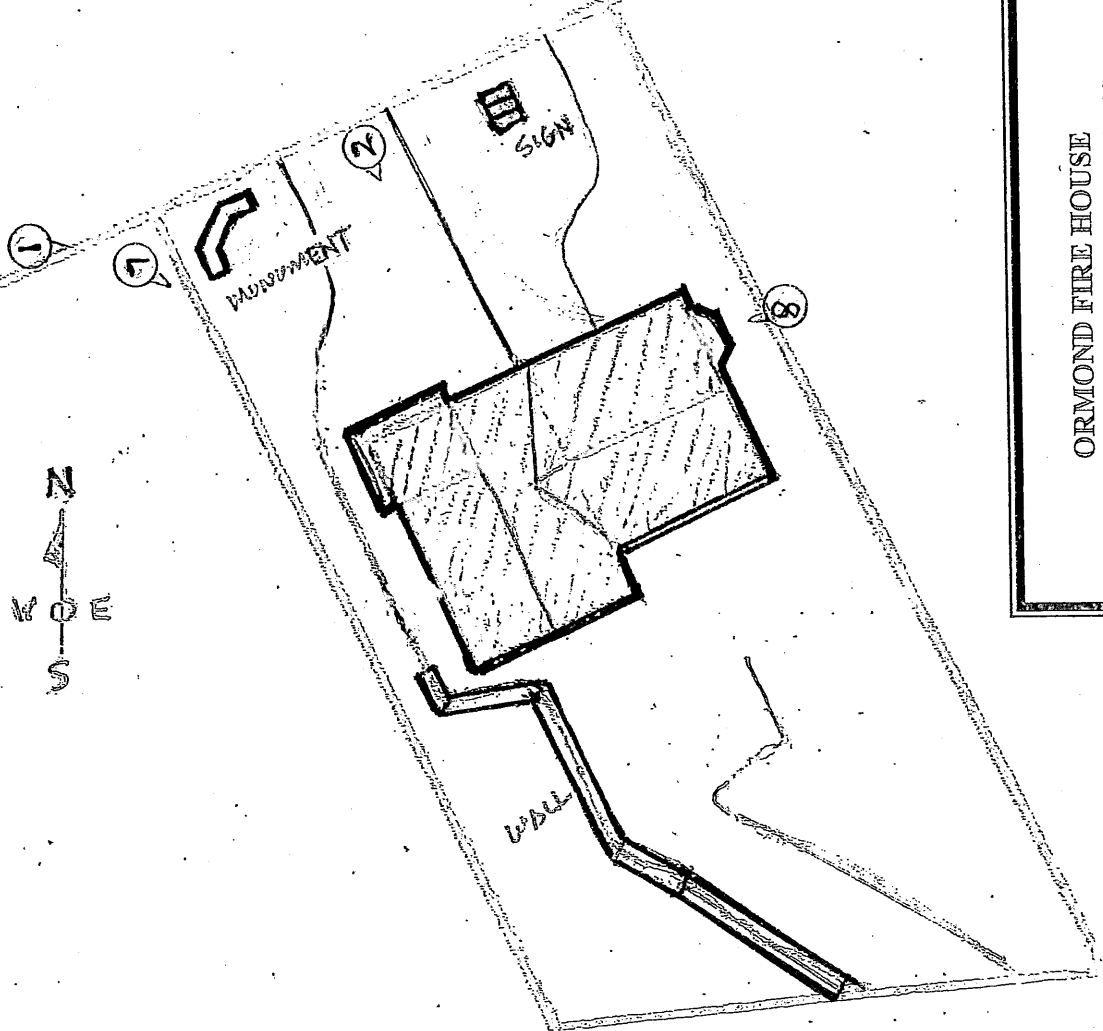
- 6. Big bay, west wall, looking west
- 7. Photo #11 of 15
  
- 6. Original jail doorway, looking north
- 7. Photo #12 of 15
  
- 6. Second floor closet, top of stairway, looking west
- 7. Photo #13 of 15
  
- 6. Second floor tower wall, office door, looking west
- 7. Photo #14 of 15
  
- 6. Local historic designation plaque, looking south
- 7. Photo #15 of 15



**ORMOND FIRE HOUSE**  
Ormond Beach, Volusia Co., Florida

Location Map

E. Granada Blvd



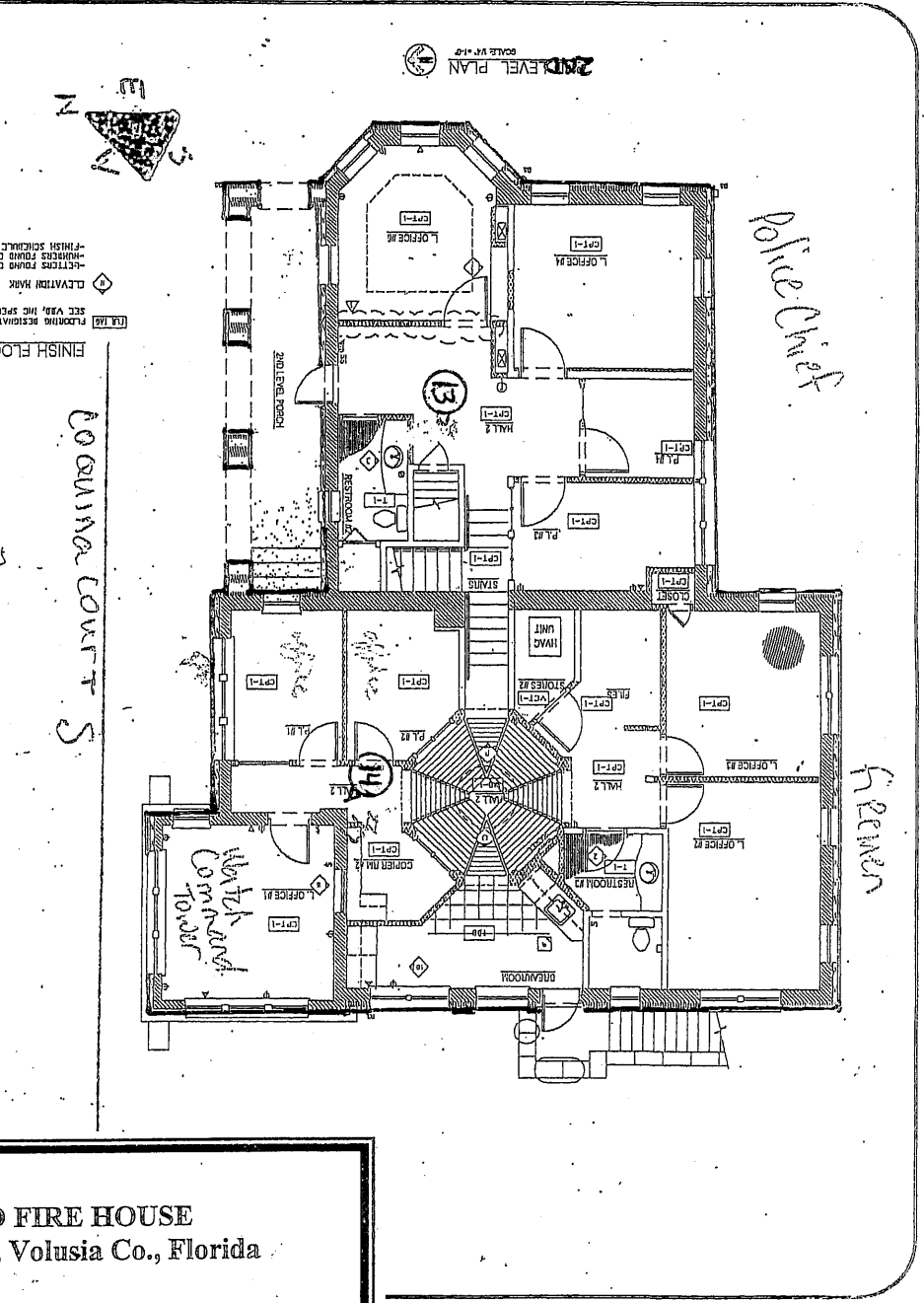
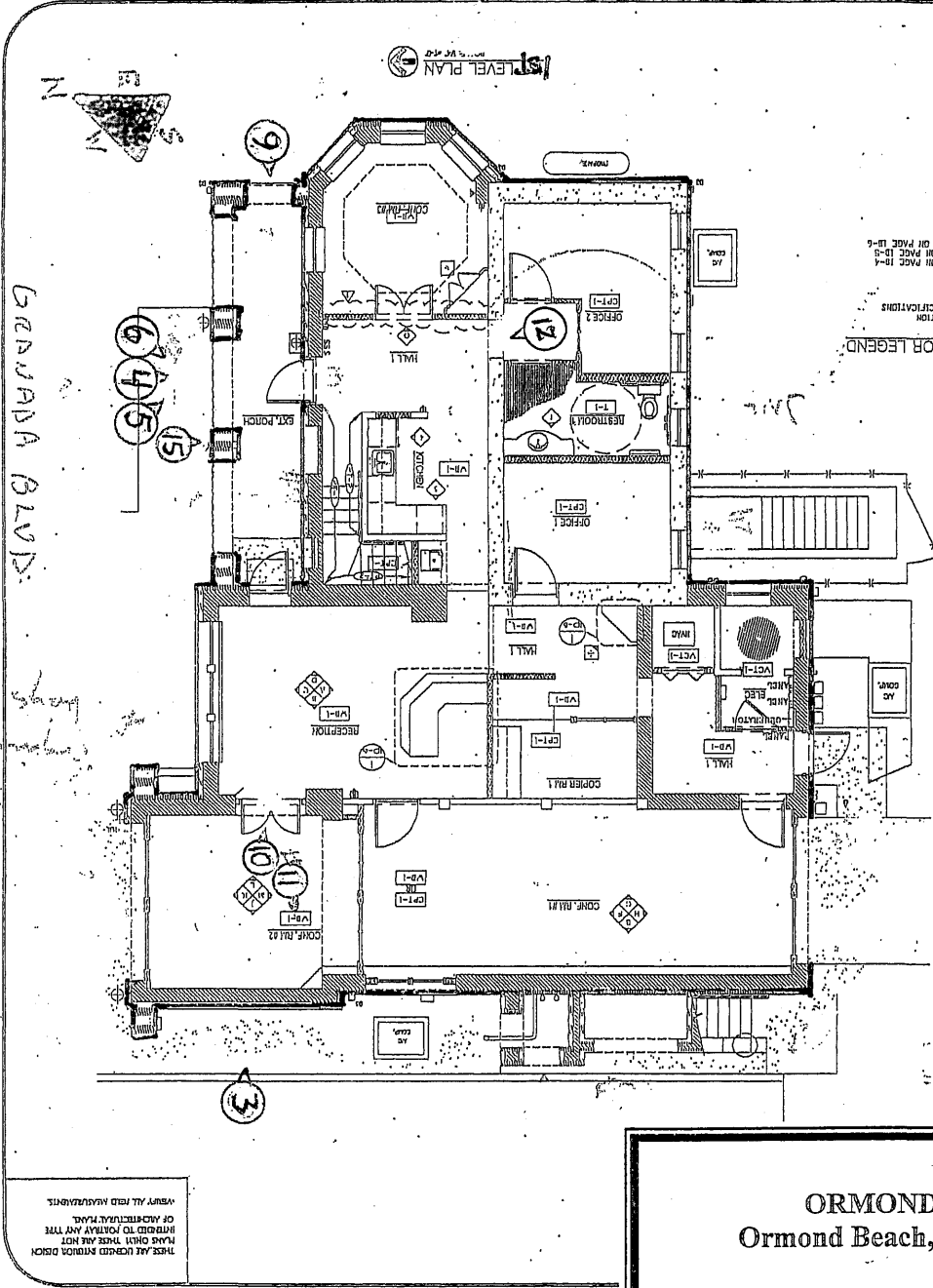
ORMOND FIRE HOUSE

Ormond Beach, Volusia Co., Florida

Site Plan, National Register Boundary, Photo  
Diagram

-NTS-

SNELL LEGAL  
Ormond Beach, FL  
FINISH FLOOR PLAN  
SHEET D-1  
SHT. 00  
OF 00



FINISH FLOOR LEGEND:  
 [Symbol] FLOORING DESIGNATION  
 [Symbol] SEE VARIOUS SPECIFICATIONS  
 [Symbol] ELEVATION MARK  
 [Symbol] FIXTURES FOUND ON PAGE 13-4  
 [Symbol] FIXTURES FOUND ON PAGE 13-5  
 [Symbol] FIXTURES FOUND ON PAGE 13-6  
 [Symbol] FINISH SCHEDULE ON PAGE 13-6

**ORMOND FIRE HOUSE**  
 Ormond Beach, Volusia Co., Florida  
 Floor Plans: first and second floors, and Photo  
 Diagram

THESE ARE UNCORRECTED REVISIONS DISCUSS  
 REVISIONS TO CONTRACTOR AND THE  
 ARCHITECT'S PLAN.  
 6-27-07  
 9-21-07

DATE: 6-27-07  
 PROJECT: ORMOND FIRE HOUSE  
 ARCHITECT: SNELL LEGAL  
 CONTRACTOR: [Name obscured]

VERIFY ALL FIELD MEASUREMENTS  
 6-27-07  
 9-21-07

GRANDDAD BLVD.  
 COQUINA COURT S

Police Chief  
 Freeman