



Photo #1  
Bost Building  
Homestead, Allegheny County, PA  
ca. 1892 illustration  
source unknown



Photo #2  
Bost Building  
Homestead, Allegheny County, PA  
Front (south) and west facades, looking  
northeast  
Photo: Charles Uhl, March, 1998



Photo #3  
Bost Building  
Homestead, Allegheny County, PA  
Rear (north) and east facades, looking  
northwest

Photo: Charles Uhl, April 1998



Photo #4  
Bost Building  
Homestead, Allegheny County, PA  
Detail of southwest room on first floor with  
paneling and wainscotting looking northeast  
Photo: Charles Uhl, April 1998



Photo #5  
Bost Building  
Homestead, Allegheny County, PA  
Detail of tin ceiling in southeast room of the  
first floor  
Photo: Charles Uhl, April 1998



Photo #6  
Bost Building  
Homestead, Allegheny County, PA  
Typical second floor room, looking  
southeast  
Photo: Charles Uhl, April 1998



Photo #7  
Bost Building  
Homestead, Allegheny County, PA  
Detail of door hinge on second floor,  
looking southeast  
Photo: Charles Uhl, April 1998



Photo #8  
Bost Building  
Homestead, Allegheny County, PA  
Detail of original fireplace mantle, looking west

Photo: Charles Uhl, April 1998





Photo #9  
Bost Building  
Homestead, Allegheny County, PA  
Typical third floor room, looking east  
Photo: Charles Uhl, April 1998

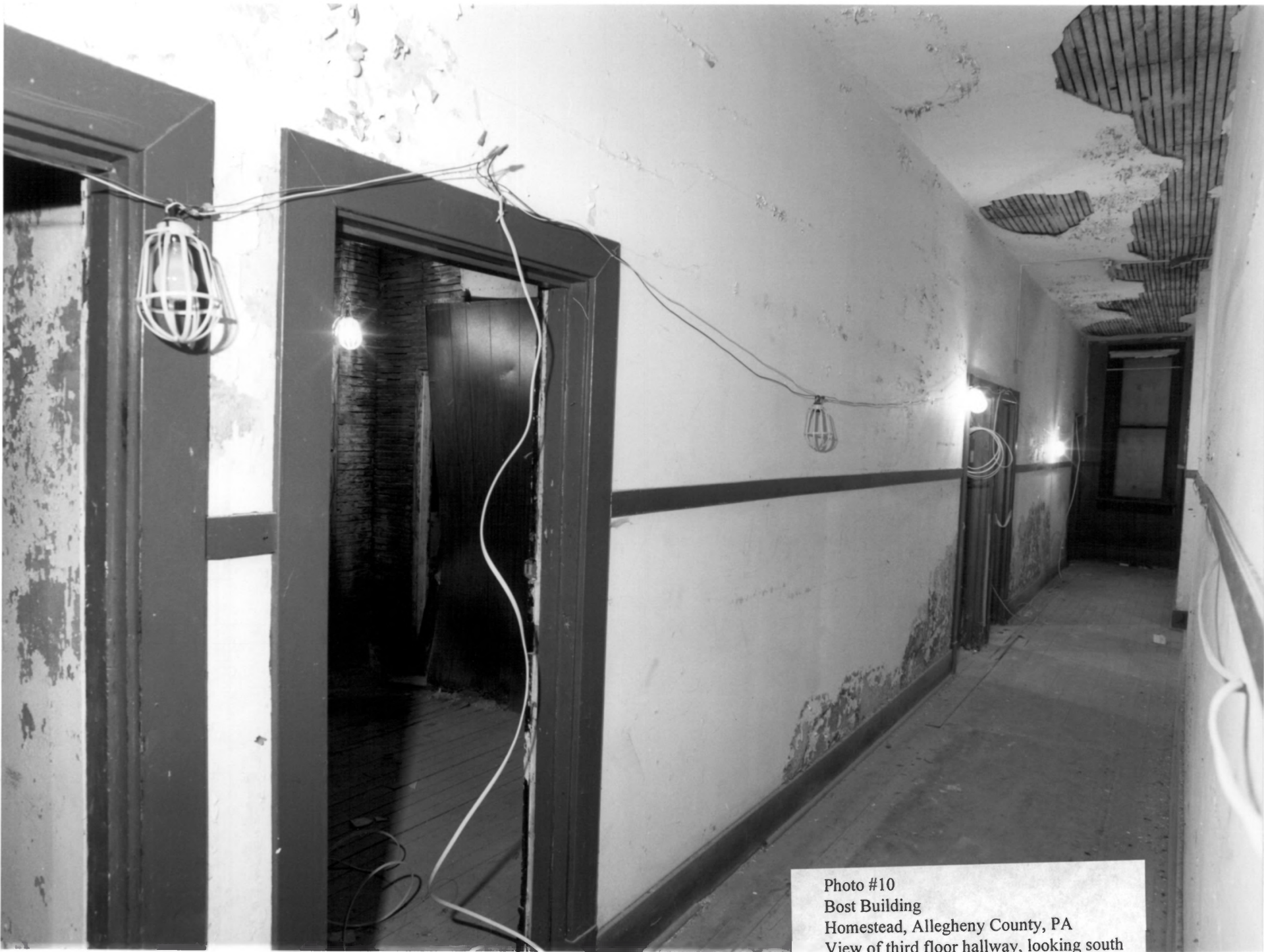


Photo #10  
Bost Building  
Homestead, Allegheny County, PA  
View of third floor hallway, looking south  
Photo: Charles Uhl, April 1998



Photo #11  
Bost Building  
Homestead, Allegheny County, PA  
View of third floor hallway, looking north  
Photo: Charles Uhl, April 1998



Photo #12  
Bost Building  
Homestead, Allegheny County, PA  
Portion of the graffiti on the wall at the  
second floor landing, looking west  
Photo: Charles Uhl, April 1998

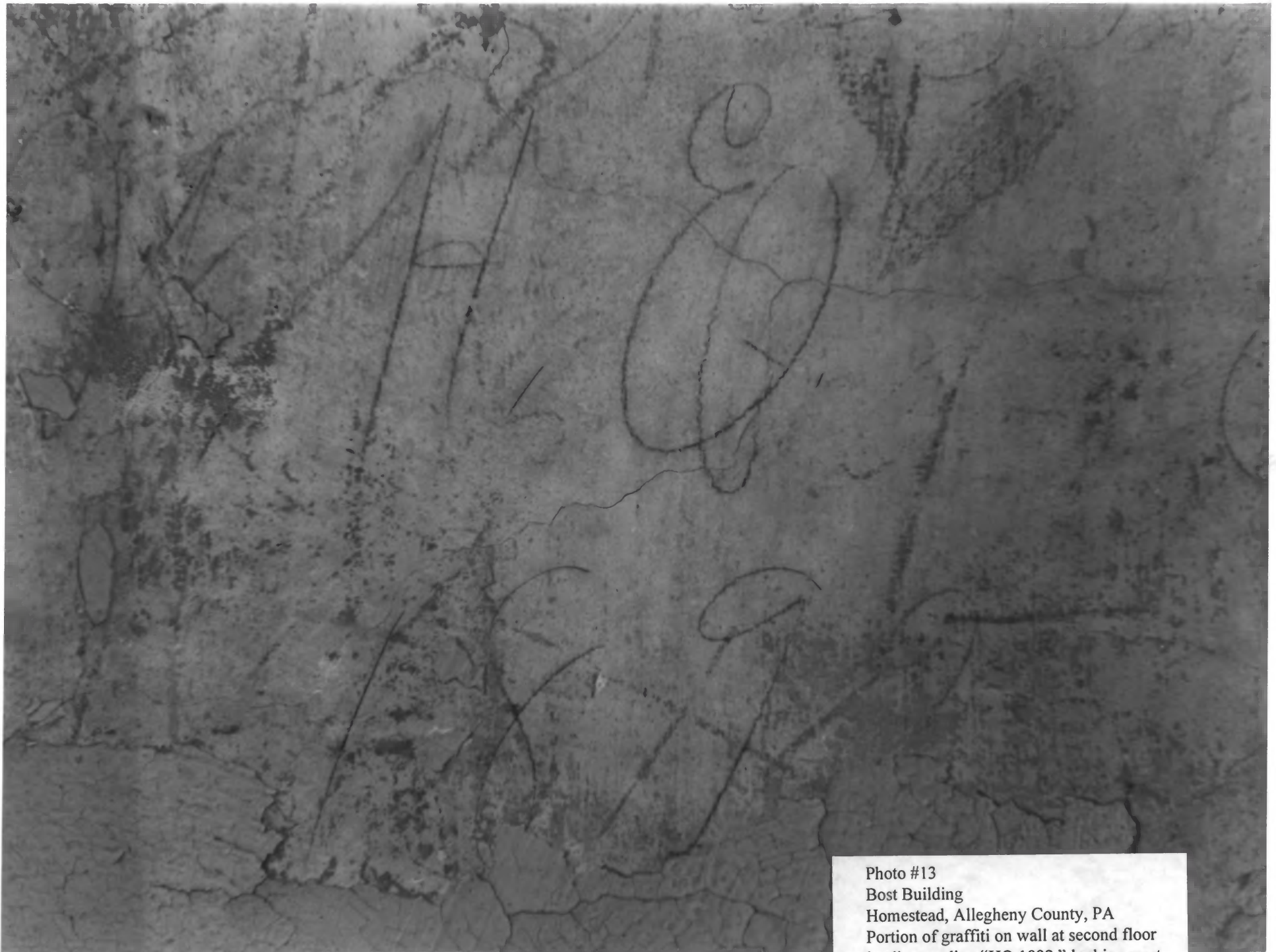


Photo #13  
Bost Building  
Homestead, Allegheny County, PA  
Portion of graffiti on wall at second floor  
landing reading "HQ 1892," looking west  
Photo: Charles Uhl, April 1998