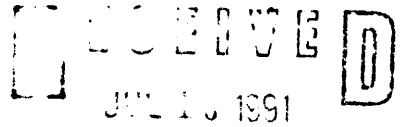


United States Department of the Interior National Park Service



National Register of Historic Places Registration Form

NATIONAL REGISTER

This form is for use in nominating or requesting determinations of eligibility for individual properties or districts. See instructions in Guidelines for Completing National Register Forms (National Register Bulletin 16). Complete each item by marking "x" in the appropriate box or by entering the requested information. If an item does not apply to the property being documented, enter "N/A" for "not applicable." For functions, styles, materials, and areas of significance, enter only the categories and subcategories listed in the instructions. For additional space use continuation sheets (Form 10-900a). Type all entries.

1. Name of Property

historic name
other names/site number

2. Location

street & number 101 N. Riverview
city, town Bellevue
state Iowa code IA county Jackson code 097 zip code 52031

3. Classification

Table with 3 columns: Ownership of Property, Category of Property, Number of Resources within Property. Includes checkboxes for private/public ownership and building/district/site/structure/object categories.

Name of related multiple property listing: Limestone Architecture of Jackson County, Iowa
Number of contributing resources previously listed in the National Register 0

4. State/Federal Agency Certification

As the designated authority under the National Historic Preservation Act of 1966, as amended, I hereby certify that this nomination request for determination of eligibility meets the documentation standards for registering properties in the National Register of Historic Places and meets the procedural and professional requirements set forth in 36 CFR Part 60. In my opinion, the property meets does not meet the National Register criteria. See continuation sheet.
Signature of certifying official: David [unclear]
Date: 7/15/91
State or Federal agency and bureau: State Historical Society of Iowa

In my opinion, the property meets does not meet the National Register criteria. See continuation sheet.
Signature of commenting or other official
Date
State or Federal agency and bureau

5. National Park Service Certification

I, hereby, certify that this property is:
[X] entered in the National Register.
[] See continuation sheet.
[] determined eligible for the National Register. See continuation sheet.
[] determined not eligible for the National Register.
[] removed from the National Register.
[] other, (explain:)

Entered in the National Register
Signature of the Keeper: Helene Zyer
Date of Action: 8/30/91

6. Function or Use

Historic Functions (enter categories from instructions)

COMMERCE/specialty

Current Functions (enter categories from instructions)

COMMERCE/specialty

7. Description

Architectural Classification

(enter categories from instructions)

Mid-19th century

vernacular

Materials (enter categories from instructions)

foundation Limestone

walls Limestone

roof Composition shingles

other

Describe present and historic physical appearance.

This 25'x60' limestone building from c.1850 is constructed on the river bank, and is two stories in front, but four stories in the rear. Rectangular in shape, with the narrow end of the rectangle facing the street, it is a freestanding hip roof building. It features a three bay facade on the west. The side elevations feature three widely spaced windows on the south and random placement on the north. The rear (river) elevation echoes the facade in design, and has a balcony at an upper level. Two chimneys are located on the south side of the roof (historic photographs show only these two). The three bay street level storefront has been recently restored and has two large display windows with a double door entry to the left (north) side. Transoms are located above the windows and door, and the stone piers of the original facade remain in place. Second floor windows on the facade have a very simple hoodmold, while all others are capped by limestone lintels. Windows throughout are double hung, and most remain the original 6/6. The exterior of the building has been covered with a light coat of stucco, and scored to look like ashlar. In a few places this stucco has flaked off, revealing moderate sized blocks of stone laid in courses.

This building is located on the east side of Riverview Street, directly on the bank of the Mississippi. Prior to construction of Lock and Dam #12, the river was actually much closer to the buildings along the bank than it is today. A two block City Park (originally the levee) is located immediately south of this building. This is one of four multi-story stone buildings along the bank, and retains the highest level of integrity. When these are viewed from the river side, they create a most imposing sight. Until the arrival of the railroad in 1870, almost all goods arrived in Bellevue by riverboat. These big stone buildings at the water's edge were among the most important in town. A note of interest: buildings on the east side of Riverview (known as Water and/or Front Street in the 19th century) are located on what was known as "water lots." These had the same lot number as the lot directly across the street from them. When you bought one of the lots on the west side of Water/Front Street, you automatically got the "water lot" to match it, and you were responsible for the care of the "water lot."

 See continuation sheet

8. Statement of Significance

Certifying official has considered the significance of this property in relation to other properties:

nationally statewide locally

Applicable National Register Criteria A B C D

Criteria Considerations (Exceptions) A B C D E F G

Areas of Significance (enter categories from instructions)

Architecture

Period of Significance

c. 1850

Significant Dates

c. 1850

Cultural Affiliation

N.A.

Significant Person

N.A.

Architect/Builder

Unknown

State significance of property, and justify criteria, criteria considerations, and areas and periods of significance noted above.

This building is significant under Criterion C as it illustrates the extensive use of limestone as a building material in this area for a variety of building types, including commercial.

217 limestone buildings and structures were recorded in Jackson County, including twenty commercial buildings. These commercial buildings appear to have been constructed between c.1850 and c.1870, with the majority (thirteen) located in the town of Bellevue. Bellevue was surveyed and platted in 1835, though land sales did not actually take place until 1844. The community served as the first county seat, and was a major trading center due to riverboat traffic. Some of the earliest commercial buildings in the county are located in Bellevue, this building being one of them.

This multi-story limestone building located on the river bank is a good example of commercial design from the 1850s. It is rectangular in shape with the narrow ends of the rectangle to both the street and the river. It features the three bay facade commonly found on single storefront buildings, and has the limestone piers dividing the front into thirds as seen on the Herald Building from the same period. Two somewhat unusual elements are seen here: it is a freestanding building, and it features a hip roof, rather than being flat. The treatment of the second floor facade windows, with simple hoodmolds, and the coating of the building with stucco scored to look like ashlar, imply an importance to this building (at least in the eyes of the original owner). Locally it is believed to have been associated with E.G. Potter, but this has not yet been documented. No information has been located as to original use. By 1885 (the earliest Sanborn map) it was a dry goods store. However, by 1894 it had become a hardware store and implement dealership, a use it was to retain for decades. The location directly on the river bank, and immediately north of the levee, indicates some connection with riverboat traffic.

See continuation sheet

9. Major Bibliographical References

Atlas & Plat Book of Jackson County. 1893; 1913.
History of Jackson County, Iowa. 1879; 1897.
Sanborn Fire Insurance Maps, 1885, 1894, 1902, 1914, 1928.
Historic photographs, Bellevue Public Library, Jackson County Historical Society Library.
Loomis. Where Proudly Flows the Mississippi. 1897.

Previous documentation on file (NPS):

- preliminary determination of individual listing (36 CFR 67) has been requested
- previously listed in the National Register
- previously determined eligible by the National Register
- designated a National Historic Landmark
- recorded by Historic American Buildings Survey # _____
- recorded by Historic American Engineering Record # _____

See continuation sheet

Primary location of additional data:

- State historic preservation office
- Other State agency
- Federal agency
- Local government
- University
- Other

Specify repository: _____

10. Geographical Data

Acres of property Less than one acre.

UTM References

A

| | | | | | | | | | | | | | |
|------|---------|---|---|---|---|---|----------|---|---|---|---|---|---|
| 15 | 7 | 1 | 2 | 5 | 9 | 0 | 4 | 6 | 8 | 1 | 5 | 3 | 0 |
| Zone | Easting | | | | | | Northing | | | | | | |

B

| | | | | | | | | | | | | | |
|------|---------|--|--|--|--|--|----------|--|--|--|--|--|--|
| | | | | | | | | | | | | | |
| Zone | Easting | | | | | | Northing | | | | | | |

C

| | | | | | | | | | | | | | |
|--|--|--|--|--|--|--|--|--|--|--|--|--|--|
| | | | | | | | | | | | | | |
|--|--|--|--|--|--|--|--|--|--|--|--|--|--|

D

| | | | | | | | | | | | | | |
|--|--|--|--|--|--|--|--|--|--|--|--|--|--|
| | | | | | | | | | | | | | |
|--|--|--|--|--|--|--|--|--|--|--|--|--|--|

See continuation sheet

Verbal Boundary Description

City of Bellevue, Original Town, Water Lot 50 (S 25').

See continuation sheet

Boundary Justification

This is the area historically associated with this resource.

See continuation sheet

11. Form Prepared By

name/title Molly Myers Naumann, Consultant (515) 682-2743
organization Jackson County H.P.C. date May 1991
street & number J.C. Courthouse, 201 W. Platt telephone (319) 652-3181
city or town Maquoketa state IA zip code 52060

United States Department of the Interior
National Park Service

**National Register of Historic Places
Continuation Sheet**

Section number 7 Page 2

GPO:2014/118



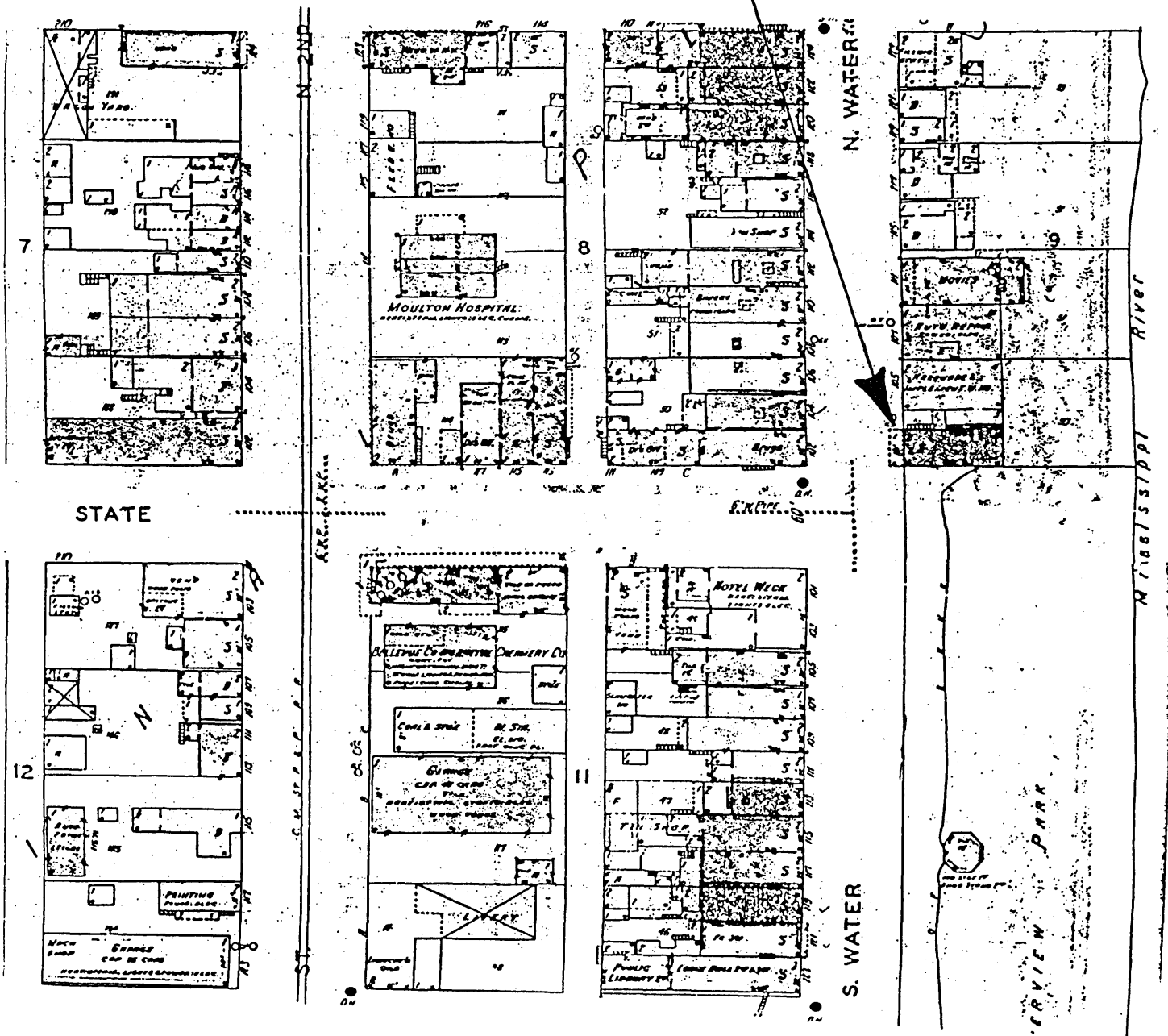
United States Department of the Interior
National Park Service

National Register of Historic Places
Continuation Sheet

Section number 7 Page 3

CFN-259-1116

101 N. Riverview

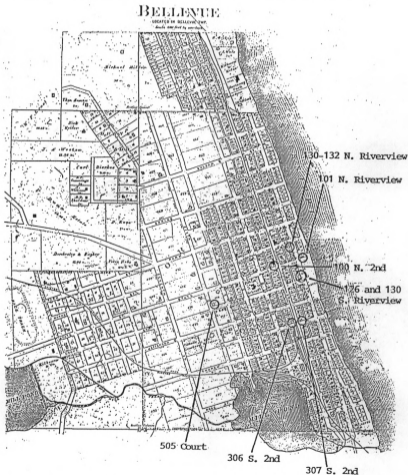


United States Department of the Interior
National Park Service

National Register of Historic Places Continuation Sheet

Section number 7 Page 4

CRN-259-1116



Town sites being nominated with this submission.

United States Department of the Interior
National Park Service

National Register of Historic Places Continuation Sheet

Section number 8 Page 2

CFN-259-1116

In many Iowa towns along the Mississippi River, the earliest commercial buildings of masonry construction feature the use of limestone (or heavy timber) lintels rather than arches. In general, it appears that lintels were used until c.1860, then arches became the common method of construction. The stone lintels served not only a functional purpose, but in brick construction, became a design element as well because of the difference in color and texture. With few exceptions, the commercial buildings from the 1830s through the 1850s were vernacular in design, though the lintels, and the often symmetrical facades, gave a hint of Greek Revival or Federal style to the buildings. The limestone commercial buildings of Bellevue are significant examples of this period and building type.

United States Department of the Interior
National Park Service

National Register of Historic Places Continuation Sheet

Section number 8 Page 3

CFN-258-1118

WE HANDLE ALL KINDS OF



Farm Machinery

...SUCH AS...

Deering and Milwaukee Binders and Mowers,
Wagons and Buggies,
Pumps and Windmills.
Also "Standard" and Domestic Sewing Machines,
Bicycles and all kinds of Hardware,
Tinware and Cutlery.

AGENTS FOR THE CELEBRATED

J. I. Case and American Threshing Machines

We have always treated our customers right, and they know it.
Very respectfully,

KOENEMAN BROS.

— Bellevue, Iowa.

United States Department of the Interior
National Park Service

National Register of Historic Places Continuation Sheet

Section number Photo Page 1

CFN-259-1116

