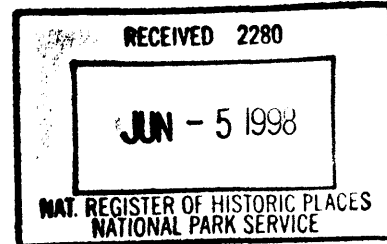


United States Department of the Interior  
National Park Service



821

### National Register of Historic Places Registration Form

This form is for use in nominating or requesting determinations for individual properties and districts. See instructions in *How to Complete the National Register of Historic Places registration Form* (National Register Bulletin 16A). Complete each item by marking "x" in the appropriate box or by entering the information requested. If an item does not apply to the property being documented, enter "N/A" for "not applicable." For functions, architectural classification, materials, and areas of significance, enter only categories and subcategories from the instructions. Place additional entries and narrative items on continuation sheets (NPS Form 10-900a). Use a typewriter, word processor, or computer, to complete all items.

#### 1. Name of Property

historic name Tyson Junior High School  
other names/site number Tyson Middle School

#### 2. Location

street & number 2607 Kingston Pike NA  not for publication  
city or town Knoxville NA  vicinity  
state Tennessee code TN county Knox code 093 zip code 37919

#### 3. State/Federal Agency Certification

As the designated authority under the National Historic Preservation Act, as amended, I hereby certify that this  nomination  request for determination of eligibility meets the documentation standards for registering properties in the National Register of Historic Places and meets the procedural and professional requirements set for in 36 CFR Part 60. In my opinion, the property  meets  does not meet the National Register criteria. I recommend that this property be considered significant  nationally  statewide  locally. (See continuation sheet for additional comments.)

Herbert L. Huger 5/26/98  
Signature of certifying official/Title Date  
Deputy State Historic Preservation Officer, Tennessee Historical Commission  
State or Federal agency and bureau

In my opinion, the property  meets  does not meet the National Register criteria. ( See Continuation sheet for additional comments.)

\_\_\_\_\_  
Signature of certifying official/Title Date  
\_\_\_\_\_  
State or Federal agency and bureau

#### 4. National Park Service Certification

I hereby certify that the property is:

- entered in the National Register.  
 See continuation sheet
- determined eligible for the National Register.  
 See continuation sheet
- determined not eligible for the National Register
- removed from the National Register.
- other, (explain:) \_\_\_\_\_

Elson H. Beall 7.1.98  
Signature of the Keeper Date of Action

**5. Classification**

**Ownership of Property**  
(Check as many boxes as apply)

**Category of Property**  
(Check only one box)

**Number of Resources within Property**  
(Do not include previously listed resources in count)

- private
- public-local
- public-State
- public-Federal

- building(s)
- district
- site
- structure
- object

Contributing

Noncontributing

1	_____	buildings
_____	_____	sites
_____	_____	structures
_____	_____	objects
1	0	Total

**Name of related multiple property listing**  
(Enter "N/A" if property is not part of a multiple property listing.)

Knoxville/Knox County MPS

**Number of Contributing resources previously listed in the National Register**

0

**6. Function or Use**

**Historic Functions**

(Enter categories from instructions)

EDUCATION: school

**Current Functions**

(Enter categories from instructions)

WORK IN PROGRESS

COMMERCE: trade

**7. Description**

**Architectural Classification**

(Enter categories from instructions)

Neo-classical Revival

Art Deco Influence

**Materials**

(Enter categories from instructions)

foundation CONCRETE

walls BRICK

roof METAL; ASPHALT

other CONCRETE; limestone; Crab Orchard stone; sandstone

**Narrative Description**

(Describe the historic and current condition of the property on one or more continuation sheets.)

**8. Statement of Significance**

**Applicable National Register Criteria**

(Mark "x" in one or more boxes for the criteria qualifying the property for National Register listing.)

- A** Property is associated with events that have made a significant contribution to the broad patterns of our history.
- B** Property is associated with the lives of persons significant in our past.
- C** Property embodies the distinctive characteristics of a type, period, or method of construction or represents the work of a master, or possesses high artistic values, or represents a significant and distinguishable entity whose components lack individual distinction.
- D** Property has yielded, or is likely to yield, information important in prehistory or history.

**Criteria Considerations** N/A

(Mark "x" in all boxes that apply.)

Property is:

- A** owned by a religious institution or used for religious purposes.
- B** removed from its original location.
- C** moved from its original location.
- D** a cemetery.
- E** a reconstructed building, object, or structure.
- F** a commemorative property
- G** less than 50 year of age or achieved significance within the past 50 years.

**Areas of Significance**

(Enter categories from instructions)

ARCHITECTURE  
\_\_\_\_\_  
\_\_\_\_\_  
\_\_\_\_\_  
\_\_\_\_\_

**Period of Significance**

1936 - 1938  
\_\_\_\_\_  
\_\_\_\_\_

**Significant Dates**

1936; 1938  
\_\_\_\_\_  
\_\_\_\_\_

**Significant Person**

(complete if Criterion B is marked)  
NA  
\_\_\_\_\_

**Cultural Affiliation**

NA  
\_\_\_\_\_  
\_\_\_\_\_

**Architect/Builder**

Baumann and Baumann (architect)  
Worsham Brothers (builder)  
\_\_\_\_\_

**Narrative Statement of Significance**

(Explain the significance of the property on one or more continuation sheets.)

**9. Major Bibliographical References**

**Bibliography**

(Cite the books, articles, and other sources used in preparing this form on one or more continuation sheets.)

**Previous documentation on file (NPS):** N/A

- preliminary determination of individual listing (36 CFR 67) has been requested
- previously listed in the National Register
- Previously determined eligible by the National Register
- designated a National Historic Landmark
- recorded by Historic American Buildings Survey # \_\_\_\_\_
- recorded by Historic American Engineering Record # \_\_\_\_\_

**Primary location of additional data:**

- State Historic Preservation Office
- Other State Agency
- Federal Agency
- Local Government
- University
- Other

Name of repository:  
\_\_\_\_\_

Tyson Junior High School  
Name of Property

Knox County, Tennessee  
County and State

---

## 10. Geographical Data

---

**Acreage of Property** 6.85 acres Knoxville 147 NW

### UTM References

(place additional UTM references on a continuation sheet.)

1	<u>17</u>	<u>234300</u>	<u>3982480</u>	3	<u>          </u>	<u>          </u>	<u>          </u>
	Zone	Easting	Northing		Zone	Easting	Northing
2	<u>          </u>	<u>          </u>	<u>          </u>	4	<u>          </u>	<u>          </u>	<u>          </u>

See continuation sheet

### Verbal Boundary Description

(Describe the boundaries of the property on a continuation sheet.)

### Boundary Justification

(Explain why the boundaries were selected on a continuation sheet.)

---

## 11. Form Prepared By

---

name/title Scott Berkes/Intern  
organization Cope and Associates, Inc., Architects date August 1998  
street & number 315 Trane Lane, Suite B telephone 423/694-9000  
city or town Knoxville state TN zip code 37919

---

## Additional Documentation

---

submit the following items with the completed form:

### Continuation Sheets

#### Maps

A **USGS map** (7.5 Or 15 minute series) indicating the property's location

A **Sketch map** for historic districts and properties having large acreage or numerous resources.

#### Photographs

Representative **black and white photographs** of the property.

#### Additional items

(Check with the SHPO) or FPO for any additional items

---

## Property Owner

---

(Complete this item at the request of SHPO or FPO.)

name Samuel J. Furrow  
street & number 1022 Elm Street telephone 423/546-3206  
city or town Knoxville state TN zip code 37921

---

**Paperwork Reduction Act Statement:** This information is being collected for applications to the National Register of Historic Places to nominate properties for listing or determine eligibility for listing, to list properties, and to amend existing listing. Response to this request is required to obtain a benefit in accordance with the National Historic Preservation Act, as amended (16 U.S.C. 470 *et seq.*)

**Estimated Burden Statement:** Public reporting burden for this form is estimated to average 18.1 hours per response including time for reviewing instructions, gathering and maintaining data, and completing and reviewing the form. Direct comments regarding this burden estimate or any aspect of this form to the Chief, Administrative Services Division, National Park Service, P. O. Box 37127, Washington, DC 20013-7127; and the Office of Management and Budget, Paperwork Reductions Projects (1024-0018), Washington, DC 20303.

United States Department of the Interior  
National Park Service

# National Register of Historic Places Continuation Sheet

Section number 7 Page 1

Tyson Junior High School  
Knox County, Tennessee

---

## NARRATIVE DESCRIPTION

Tyson Junior High School was constructed in 1936, with an addition constructed in 1938. It is located on a 6.8 acre site on a small hill facing Kingston Pike, near the intersection with Concord Street, in a predominantly commercial section of Knoxville. The dominant architectural style is Neo-classical, with Art Deco elements also present. The foundation and floors are of reinforced concrete, the walls are load bearing brick. Reinforced concrete and steel columns and beams are used. Most of the roof is low-slope single-ply membrane roofing and is supported by steel open web joists in the 1936 section and wood rafters in the 1938 section. The roofs over the auditorium and the gymnasium are standing seam metal gables and are supported by exposed steel trusses. There is one main floor with 26,500 square feet, an upper floor with 14,500 square feet and a lower floor with 11,500 square feet. The total floor area is approximately 52,500 square feet. The original plans called for completing the second floor, but it was never built. The building has been unoccupied for over ten years and has been subject to vandalism and general deterioration during that time.

The front, or south elevation, displays the most architectural detail. The facade consists of three projected bays, one in the middle and one on each end. The central bay contains the most significant architectural feature, the main entrance. The entrance consists of a stone portico that rises the full height of the building supported by four sandstone columns. The columns rest on a limestone platform reached by limestone stairs. The perimeter of the front porch is limestone with Crab Orchard stone pavers in the center of the platform leading to the entry doors.

The columns are octagonal in plan with four major and four minor faces. The major faces are parallel and perpendicular to the facade of the building and the minor faces at forty-five degree angles to the building. The columns have an octagonal base only slightly larger than the column shaft. The base is over two feet tall and the transition from base to shaft is made by three stylized torus rings, also octagonal in plan. The column shafts are straight and terminate in capitals. The capitals are a very low relief Corinthian on the four main faces. The four minor faces have little carving and taper to a point where the capital meets the architrave. The architrave is composed of one angular and one curvilinear ribbon of ornamental carving interrupted at the columns by a stylized flower carving. The frieze is a wide band with the words "TYSON JUNIOR HIGH SCHOOL" carved into it in a simple serif type-style. The cornice begins with a strong dentil mold and is terminated by a large cyma recta mold. The pediment is greatly simplified. It has a very shallow pitch, has no top mold and it is dominated by the ornament at the center and each end. In the center of the pediment is a two dimensional Greek antefix-like ornament with a smaller similar ornament wrapping the corner at each end. The portico protrudes beyond the face of the central bay and the details in the end capitals, the architrave, frieze and cornice wrap around the corner and die into the brick of the central bay. Behind the portico is a covered porch with the ceiling level with the bottom of the architrave on the portico. This porch is finished with stucco. There is limestone trim framing three sets of wood double doors which have large lights in the upper portion of the door and are the main

United States Department of the Interior  
National Park Service

# National Register of Historic Places Continuation Sheet

Section number 7 Page 2

Tyson Junior High School  
Knox County, Tennessee

doors leading into the school. Each set of doors has a fixed transom with the muntin bars mounted diagonally to form a geometric pattern. On the west wall of the portico are three marble plaques commemorating the school board officials, the architects, the contractor, and the fact that the building was made possible through funds provided by the PWA. The east wall of the portico contains a single 6:6 wood window. Running above the stone trim above the transoms is a concrete belt course which continues along the entire facade of the building. This belt course is flat with two v-grooves dividing it into three equal parts. Above the belt course are four contiguous 6:6 double hung wood windows. These windows open into the second floor level. The sides of the portico have one 6:6 window on each side which align with the four at the back on the second floor level. These windows have wood sills.

The central bay projects approximately six feet beyond the sides of the portico. This bay is brick, and the brick is laid in a common bond with a header course every six courses. Near the bottom of the bay is a soldier course whose top is level with the top of the point where the bottom of the columns intersect the top of the entry platform. Farther up the central bay, flanking the portico, are two casement windows behind a wythe of bricks laid in a screen (stretcher-void-stretcher) which allows air and light through to the window behind. Near the top of the bay is a soldier course which runs the length of the facade. The bottom of this soldier course aligns with the window heads on the second floor. Capping the facade is a concrete cornice which has a scalloped drapery design on the face and has semi-cylindrical elements running along the top of the central bay, this feature has a distinct Art Deco style.

The longest portion of the facade is the section between the central and end bays. This part of the facade is the furthest back and has the least amount of ornament. Several elements which originated in the portico and central bay continue through this section. The bottom and top soldier course, the grooved concrete belt course and the concrete cornice all continue through, although the concrete cornice replaces the semi-cylindrical elements on top with a recessed flat trim. There are nine 6:6 double hung wood windows on each floor in each of the two long bays. They are regularly spaced and the first and second floor windows align vertically. The heads of the second floor windows align with the bottom of the top soldier course. The heads of the first floor windows align with the bottom of the concrete belt course. The sills are angled brick rowlocks.

The end bays project forward from the long middle bays nearly thirty feet and the side of the bays facing the entrance is a blank brick wall. The top and bottom soldier course along with the grooved belt course and the concrete cornice continue as before. The side of the end bay facing Kingston Pike has a low, semi-circular, concrete planter-like wall at its base. The inside edge of this concrete wall aligns with the inside face of two square pilasters which run from the ground to the full height of the wall. These pilasters are brick, and they have a brick base which is slightly thicker than the shaft of the pilaster. The shaft of the pilaster runs up the face of the wall to the bottom of the concrete cornice. The pilasters are capped with a limestone block which has a flower-like carving which resembles the antefix at the peak of the pediment of the portico. There is also a concrete trim piece on top of this cap that is a miniature reverse of the cylindrical trim that runs along the top of the concrete cornice on the central bay. The trim looks as if it were cast from the cylindrical trim with points resembling flutes and the cylinders as voids

United States Department of the Interior  
National Park Service

# National Register of Historic Places Continuation Sheet

Section number 7 Page 3

Tyson Junior High School  
Knox County, Tennessee

---

between the points. Between the pilasters is a semi-circular blind arch which springs from a point approximately one third of the way from the top of the wall. This arch consists of three courses of brick and it projects approximately sixteen inches from the back of the arch. The arch supports several courses of brick above it and the concrete cornice as well. Below the arch, centered in the wall, is a tall, narrow cast stone ornament piece that resembles square tiles turned forty-five degrees and overlapping half their length in a chevron-like pattern. The end bay projects a short distance past the pilasters and then is recessed. These outside edges continue the top soldier coursing from the rest of the facade, but they stop at the pilasters. The bottom soldier course continues through the pilasters. The concrete belt course stops at the pilasters, but picks up again in the space underneath the arch. The concrete cornice regains its cylindrical top trim as it runs the length of the end bay, being obscured by the stone caps atop the pilasters. The bond pattern remains the same throughout the bay. The one element on the facade which is not the same on both sides of the centerline is the cornerstone which is incorporated into the right-hand end bay, outside of the pilaster. This cornerstone is made of limestone and has two lines of text, "erected" and "1936" in a smaller version of the type style in the frieze of the portico.

The east elevation of the school begins with the side of the projected end bay. This side strongly resembles the long bays on the facade. There are six 6:6 wood double hung windows on each floor aligned vertically as on the facade. At the north end of the first floor windows is a small, four light, fixed wood window which was added during the 1938 construction. The top and bottom soldier courses continue as well as the concrete belt course.

The next element on this elevation is the east entrance. This entrance continues the line of the facade past the facade's extended end bay. The side of the east entrance is blank brick with the soldier courses, belt course, and concrete cornice continuing. The entrance itself is similar to the end bay on the facade. Concrete steps lead up to a single pair of wood doors with three horizontal lights in the upper two-thirds of the door. The bottom soldier course runs several courses above the concrete stairs. The concrete belt course is lowered until the bottom aligns with the top of the door frame. Projecting from the belt course is a concrete marquee which offers some shelter to people using the entrance. Above the marquee is a large, wood, double-hung window with wood muntin bars in a pattern resembling the pattern in the transoms above the main entry doors. The window is recessed in the wall and the bricks are stepped back twice to reach the window. The window has a short soldier course at the head and a sloped rowlock sill. Above the window is an ornamental cast stone flower with an identical pattern to the flower in the architrave of the portico in the main entry. Above the stone flower is a brick arch similar to the arch on the end of the end bay of the south facade. This arch is slightly shallower than the arch on the facade's end bay, but otherwise it is very similar. It has the cylindrical trim along the top of the concrete cornice, it has the full height pilasters with stone caps, flowers, and reverse cylinder trim on top. The entry steps down to the face of the wall to its north by two steps and the concrete belt course picks back up again on the step at the same level as on the facade. There are four more first and second floor windows before the second floor stops. A short parapet wall continues for two windows and stops. This is the line that separates the 1936 construction from the 1938 construction. The concrete cornice stops at

United States Department of the Interior  
National Park Service

# National Register of Historic Places Continuation Sheet

Section number 7 Page 4

Tyson Junior High School  
Knox County, Tennessee

---

the end of the second floor, and the concrete belt course stops at the end of the 1936 construction. The parapet wall has a flat concrete cap. The last major element in the 1936 construction is a reinforced concrete areaway which surrounds the entrance to the basement boiler room. The doors to the boiler room are a pair of steel louvered doors in a steel frame. A galvanized steel pipe railing surrounds the top of the opening.

The single story 1938 construction begins with two 6:6 wood double-hung windows identical to the windows in the 1936 construction, with a downspout running between them. The bottom soldier course continues at its original height. The top of the wall now has a metal gutter running along it instead of a concrete cornice. There are five smaller 12:12 wood double hung windows with their heads much lower than the previous windows. The individual lights in these windows are also much smaller than those in the 1936 windows. There is a secondary east entrance towards the north end of the elevation. This entrance is a single story in height, and it shares many elements with the previously described entrances. Concrete steps lead up to the single set of double doors identical to the doors in the primary east entrance with a transom that has diagonal muntin bars in a much simpler pattern than the transoms above the main entry doors. Limestone trim surrounds the opening and there is a small segment of concrete belt course directly above the stone trim with a concrete marquee projecting from it. Full height pilasters flank the opening with the bottom soldier course from the front of the building forming part of the base. The concrete belt course segment dies into the pilasters. The metal gutter runs around the top of the pilaster forming a cornice like projection. The pilasters step back into the wall in two steps and a downspout runs down the south side.

Immediately north of the entrance is a reinforced concrete retaining wall. The building returns to two stories at this point by adding a basement level. There are five windows in this last section of the east elevation. The main floor has two twelve light steel framed industrial windows. The top eight lights are mounted in a pivoting frame. The basement has three 4:4 double hung wood frame windows which look like the 6:6 windows in other areas of the building with one row of lights removed from each sash. The head of the basement windows align with the bottom of the bottom soldier course from the front of the building. The sills of the windows remain sloping rowlock bricks. The last element on the east elevation is a downspout.

The rear, or north elevation sits on grade and is two stories high. The main floor is the upper story and the basement is the lower story. The first opening is a wood door with three horizontal lights in the upper half of the door. The door has a fixed twelve light wood transom. The head of the transom aligns with the bottom of the bottom soldier course. The rest of the openings in this section of the north elevation align vertically. The main floor has eight windows. The first seven are 4:4 wood windows like the three on the north end of the east elevation. The last window on the west end of this section of the north elevation is a 6:6 like the others in the building. The basement level has a total of six 6:6 windows and two more doors like the first. There are three windows, a door, two windows, another door, and one window. A downspout divides the openings into two groups, the main level into a group of three and five and the basement level into a group of four and five. The wall then dead ends into the side of the gymnasium.



United States Department of the Interior  
National Park Service

# National Register of Historic Places Continuation Sheet

Section number 7 Page 5

Tyson Junior High School  
Knox County, Tennessee

---

Half of the block of the gymnasium projects out past the wall of the north elevation. The gymnasium is much taller than the wings on either side. The ridgeline of the gable roof points east and west. The east face of the gymnasium has four windows and one door. The door is like the last three except that it has two lights in the top half of the door. The two windows on the basement level are 6:6 as before. The main level windows are large 20:20 wood double hung windows. The head of these windows is slightly below the line of the top of the north face of the gymnasium. The first main floor window is roughly centered over the door on the basement level and the other main floor window is roughly centered over the basement window nearest the north end of the wall. The remaining basement window is near this last window. The bottom soldier course continues to align with the heads of the windows and the transom of the door.

The north elevation of the gymnasium is very simple and symmetrical. The basement level has a door, like the other gymnasium door, and five 6:6 windows on each side of the centerline. The main level has three 20:20 windows on each side of the centerline. The openings on both floors are regularly spaced. The bottom soldier course continues to run along the top of the basement level openings. The elevation also includes four downspouts leading from the metal gutter above.

The west elevation of the gymnasium has four windows and one door like the east elevation. The main level has two 20:20 windows in the same positions as on the east elevation. The basement level has two 6:6 windows and one door like the other gymnasium doors. The openings are in the same location as on the east elevation, except that the door is in the opening occupied by the middle window.

The last portion of the north elevation is has eight 4:4 and one 6:6 window in the main floor level, and nine 6:6 windows and one door with transom. On the main level the 6:6 is nearest the gymnasium with four 4:4 windows grouped next to it. The other four 4:4 windows are grouped together past the downspout. The basement level has one 6:6 window by itself close against the gymnasium then four more grouped together. After the downspout there is a door like the doors in the first portion of the north elevation, grouped with four more 6:6 windows. The 4:4 windows on the main level are aligned vertically with a window or door below. The 6:6 window in the main level and the windows on each end of the basement level do not align vertically with another opening. The bottom of the bottom soldier course continues to align with the top of the windows and door transom.

The west elevation begins much like the east elevation ended. There is a downspout at the north end and there is a reinforced concrete retaining wall with a galvanized steel pipe railing on top of it. There are three 4:4 wood double hung windows in the basement level and two twelve light metal framed industrial windows with the top eight lights mounted in a pivoting frame. There is a secondary west entrance identical to the secondary entrance on the east elevation including the downspout on the south side. Four 6:6 wood double hung windows, then a downspout, then one more 6:6 window complete the 1938 addition. The 1936 building rises back to two stories at this point. The bottom soldier course is back near the ground, the concrete belt course begins again just below the gutter of the 1938 addition, the top soldier course returns with its bottom aligned with the head of the second floor windows and the

United States Department of the Interior  
National Park Service

# National Register of Historic Places Continuation Sheet

Section number 7 Page 6

Tyson Junior High School  
Knox County, Tennessee

---

concrete cornice with the scalloped drape pattern and flat top trim returns as well. The pattern of second floor and main floor windows aligning vertically continues, with the exception of the first set of windows on the northern end of the two story section. The second floor window is a knock-out panel for a future window that was never installed, but the first floor window is in place and aligns with the knock-out panel. The next eight sets of 6:6 windows align vertically just like the windows on the facade.

The primary west entrance is the next element on the west facade. This entrance is exactly the same as the primary east entrance. The south side of the primary west entrance is a blank brick wall with the bottom soldier course, concrete belt course and concrete cornice running through it. The west side of the west end bay has six sets of 6:6 wood double hung windows which lead back to the facade.

The interior of Tyson junior high school has suffered a great deal during the ten years it was empty. All of the furniture and lockers were removed by the school system when they left the building. Vandals have removed all of the radiators, all of the chalkboards have been destroyed or removed, many of the light fixtures, toilet fixtures, and window panes have been broken. Marble toilet partitions have been smashed and several holes were allowed to form in the roof allowing water damage. Much of the paint in the interior is peeling and the plaster has fallen off of the walls. The floors originally were synthetic tile but all of the tiles have been removed. The building remains structurally sound due to the robustness of its concrete and solid brick masonry construction. The strength of the building has allowed it to survive with its architectural integrity intact.

The main entrance leads through an airlock into the twelve foot wide main corridor which runs parallel with the facade. On axis with the main entrance is the entrance to the auditorium. The auditorium is a large space which contains wooden theater seats. The sloping concrete floor leads to a raised stage which is reached by semi-circular stairs on either side. The proscenium has ornamental wood trim surrounding it. The paint on most of the surfaces in the auditorium was peeling and graffiti was painted on the back wall of the stage. The exposed steel trusses supporting the roof have gently curved lower chords and, apart from peeling paint, appear sound. Nine six-over-eight windows line each side of the auditorium which open into light courts on either side and which allow large amounts of natural light into the auditorium. The area has been rehabilitated for use as meeting space or offices.

The main corridor on the main floor runs east and west. The floor is exposed concrete slab, the ceiling is plaster on metal lath suspended from structure above. On the north side of the main corridor are the teachers' lounges and toilets and the students' toilets. The facilities are divided by gender with the women's and girl's toilets in the east wing and the men's and boy's toilets in the west wing. Much of the south side of the main corridor had lockers embedded in the wall and now there are large voids in the walls exposing the columns holding up the second floor. These lockers rested on a glazed block base and extended up approximately five feet. The wall then returns to full thickness and is smooth plaster on metal lath. There are transoms above the doors to the classrooms in the south wall and clerestory windows in the west wing in the south wall which allow daylight into the corridor. The transom windows are wood hopper type windows which open into the classrooms. They are eight light

United States Department of the Interior  
National Park Service

# National Register of Historic Places Continuation Sheet

Section number 7 Page 7

Tyson Junior High School  
Knox County, Tennessee

---

windows and match the width of the door they are over. They are approximately 1'-8" high. The clerestory windows are configured the same way as the transoms and are approximately 3'-6" wide. The heads of the transoms and the clerestory windows are approximately 9'-0" above finished floor. There are no doors remaining in the door frames and the doors are approximately 7'-0" high. The frames are wood and have many coats of peeling paint on them. Most of the frames are damaged from multiple sets of hardware being attached to them. The south side of the main corridor has administrative offices in the east wing nearest the main entrance. The rest of the south side of the west wing consists of a small classroom opening into a large classroom in the end bay of the facade. The south side of the west wing contains one large and one medium sized classroom and the end bay of the west end of the facade contains a large classroom. At each end of the main corridor is a concrete stair leading up to the second floor, and the primary east and west entrances.

Each classroom at Tyson is unique, but there are features which are common to all. All of the classrooms have wood door frames with transoms above leading in from the hallway. There are bare concrete floors in all classrooms and the ceilings are all plaster, either on gypsum lath on the main floor or metal lath on the second floor. The walls have structural glazed tile base with brick above to approximately 48" above finished floor with plaster above to the ceiling. All classrooms have windows on one wall, and most have places where chalkboards were mounted on the other three walls. Some of the rooms have closets or doorways leading to other rooms.

Near the stairs on each end of the main corridor is a secondary, ten foot wide corridor. The west side of the west corridor has three rooms. The largest is nearest the main corridor, the smallest is the next one north, and a medium size classroom ends at a tertiary corridor parallel to the main corridor and leading to the secondary west entrance. On the east side of the west corridor there are three equal sized classrooms. The tertiary corridor starts at the secondary west entrance and passes a stair leading to the basement level before ending in the backstage area of the auditorium. The north side of the tertiary corridor is occupied by the boys locker rooms and other support rooms for the gymnasium. The gymnasium is entered from this hallway through a pair of doors and also through the locker room area.

The east corridor is a mirror image of the west corridor. The west side of the east corridor has two large classrooms, while the east side has one large classroom and then a series of smaller rooms with a lower ceiling height. This was the home economics area and these rooms were apparently intended to mimic the rooms in a house. The tertiary corridor on the east side runs from the backstage area, past the stairs leading to the basement, to the secondary east entrance. The north side of the tertiary corridor contains the girls locker rooms.

The gymnasium is a large open space with a folding partition wall in the middle of the long side. The roof is supported by exposed steel trusses with flat bottom chords. The large 20:20 windows provide large amounts of natural light. The original wood floor is in reasonably good condition.

The second floor of Tyson Junior High School is significantly smaller than the main level. Access is via the two stairways at either end of the main corridor. At the east end of the second floor is a large classroom in the bay that projects from the east end of the facade. To the north

United States Department of the Interior  
National Park Service

# National Register of Historic Places Continuation Sheet

Section number 7 Page 8

Tyson Junior High School  
Knox County, Tennessee

---

is a short corridor directly above the secondary corridor on the first floor. This corridor ends in a small storage room and has small classrooms on the east and west sides. On the south side of the main corridor is a large room which takes up the entire space between the main entry bay and the projecting end bay. The north side of the east end of the main corridor houses storage rooms and the boys toilet room. In the middle of the north side is a projection booth opening into the auditorium. In the middle of the south side of the corridor is a small room directly behind the front portico. There is also a long thin room to the west of this room which extends out into the portion of the central bay which extends beyond the front portico. The rest of the north side of the main corridor consists of the girls toilet room and storage. The south side contains two more classrooms. The west end of the main corridor has a large classroom in the projecting bay, and a slightly longer corridor to the north. This corridor also ends in a storage room, but has two small classrooms to the west and one to the east.

The basement level of the school is accessed by the two stairs in the tertiary corridors from the main level and also by several doors which open onto grade at the rear of the building. There are two corridors at this level which duplicate the tertiary corridors on the main level. The west corridor leads to two large classrooms at the west end which also contain several storage rooms, and to a large classroom to the north in a portion of the area under the gymnasium. The largest part of the area under the gymnasium is occupied by the former cafeteria. This space is large, well lighted by natural light and is interspersed with octagonal concrete columns. The area immediately to the south of the cafeteria is the former kitchen with several associated storage areas. The east stair leading to the basement leads to two classrooms at the east end similar to the ones at the west end. There are also two smaller rooms between the cafeteria and the end rooms. There is also direct access into the cafeteria from this stair. There are two large crawlspace areas in the basement which underlie the rest of the 1938 construction. The classrooms in the basement were mainly used for shop classes and were finished with horizontal tongue-in-groove wood paneling.

The site the school sits upon has been relatively unchanged. The front yard still contains the original sidewalk leading from Kingston pike. The walk splits in two as it approaches the school and leads to stairs which climb the steep slope of the front lawn. Between the steps is a rounded concrete projection which holds the flagpole. The sidewalk, stairs and flagpole support are of concrete. The main vehicular access to the school is to the southeast. There is a large driveway which the school shares with the University of Tennessee married student housing facility to the east. The drive curves up the slope and leads to a parking lot on the east and rear of the building. There are several large trees on the site which seem to date back to the Washburn residence and possibly before. There are three oak trees and an elm with trunks over four feet in diameter and near Kingston Pike there is a chestnut tree with a two foot diameter trunk.

United States Department of the Interior  
National Park Service

# National Register of Historic Places Continuation Sheet

Section number 8 Page 9

Tyson Junior High School  
Knox County, Tennessee

---

## STATEMENT OF SIGNIFICANCE

Tyson Junior High School is eligible for the National Register of Historic Places under category C as a local example of Neo-classical architecture by the well-known Knoxville architectural firm of Baumann and Baumann. Tyson Junior High School is located at 2607 Kingston Pike in Knoxville, the seat of Knox county. Constructed in 1936 and 1938, the school exhibits both classical and Art Deco details in its design. The central portico, Corinthian capitals, ornamental carving, scalloped cornice, and multi-light windows are some of the preeminent exterior details of the building. Inside, the building's historic features include its hall plan, wood door frames with transoms, some tile, and exposed trusses. Overall, Tyson Junior High School has a high degree of architectural integrity.

There are three major reasons why the Knoxville city schools decided to build Tyson when and where they did: 1) The new emphasis the state placed on public education in the early part of the twentieth century; 2) The growth in the population of Knoxville due to annexation; 3) The growth of the new suburbs to the west of downtown due to the advent of the automobile.

There was a major movement in the early years of the twentieth century in Tennessee to expand and improve public education throughout the state. State laws were passed requiring local school systems to meet state standards in the number of grades, the type of classes offered, quality and pay rates for staff and quality of school buildings. In 1924, the Knoxville school board decided to hire the William B. Ittner Company to survey the existing schools and come up with recommendations that the board could use to improve the school system. The Ittner report found that the school systems biggest weakness was its shortage of junior high schools.

In a sense the junior high school period is the most critical stage in the educational program... It is in the junior high school stage that more differentiation comes in and individuals are helped to find their own particular abilities and capacities and to gain an insight into the significance of different ranges of subject matter. Here it is that the boy is given an impetus and started in a direction that will carry him on to the completion of whatever proves for him the best type of education. Hence it is particularly unfortunate that the youth of Knoxville have as yet very little in the way of junior high school facilities. (A History of the Knoxville Public Schools, pg. 32)

This report came at a time when the population of Knoxville was rapidly increasing. "By 1917, thousands of people living south of the Tennessee river and in the towns of Lonsdale, Park City, Mountain View and Oakwood were ready to join Knoxville."(MacArthur, 1984, pg. 100) This huge annexation led boosters to proclaim Knoxville the 114 percent city because the population more than doubled between the 1910 and 1920 census.

United States Department of the Interior  
National Park Service

# National Register of Historic Places Continuation Sheet

Section number 8 Page 10

Tyson Junior High School  
Knox County, Tennessee

---

Knoxville annexed these areas because much of the population of the city was moving out to the first ring of suburbs that had grown up around the perimeter of the city. The growth to the west was especially dramatic, and continues to this day.

At the same time that Knoxville's older wards were changing in racial composition and becoming lower class enclaves, upper-and upper-middle class whites were fleeing westward, beginning one of the most significant migrations in the regions history. Wards twenty-four and twenty-five (Sequoyah and Talahi, new model planned developments) experienced fantastic population increases of 161.55 percent and 106.69 percent, respectively, between 1920 and 1930, and real estate assessment values in the former ward trebled during the 1920's, going from \$2,111,800 in 1920 to an astounding \$6,058,950 in 1930. This decade saw one of the great building booms in the Sequoyah and Cherokee regions, as the business elite, offended by the noxious odors of the older wards and by their lower-class populations -white as well as black-moved westward to the lovely new enclaves being established in West Knoxville.(McDonald, pg. 58)

These three main factors led the Parent Teachers Association in these recently annexed parts of the city to petition the city for funds to build a new junior/senior high school in the western part of the city. The school was to be named in honor of Gen. Lawrence Davis Tyson, Spanish-American and World War One veteran, and United States Senator. The site was purchased from the estate of William P. Washburn, a prominent local businessman. The house on the property, which was to be demolished to make way for the new school, was built by Matthew McClung, the son of one of Knoxville's early settlers. Matthew McClung's father, Charles McClung had surveyed and laid out the streets of Knoxville in the late eighteenth century.

Baumann and Baumann were retained by the city to design a junior/senior high school complete with gymnasium, cafeteria and spaces for shop classes. The city discovered it could not afford to build this scheme and asked the project architect, Mr. A.B. Baumann Jr., to design Tyson as a junior high school only and to divide the construction into two phases. The reduced scale project called for the rear portion of the building, containing the gymnasium, the cafeteria and shop spaces along with nearly half of the proposed classrooms to be built in the second phase. Funding for Phase I included a \$30,000 appropriation from the council for the land, along with a 45% Federal Emergency Administration of Publics Works (PWA) government loan and grant to secure construction of the school building. The final cost for the first phase of construction was \$179,669.82. The contractor for phase I was Worsham Brothers of Knoxville. The cornerstone was laid on September 16, 1936. Several items were placed inside the cornerstone including an American flag and a model of the airplane that General Tyson's son, McGhee Tyson was flying when he was shot down and killed during World War One. Classes in the truncated building began in the fall of 1936.

It was soon apparent that the first phase was insufficient and Baumann and Baumann were again retained to commence design work on Phase II. The intent was to simply finish the

United States Department of the Interior  
National Park Service

# National Register of Historic Places Continuation Sheet

Section number 8 Page 11

Tyson Junior High School  
Knox County, Tennessee

---

building as it had been designed originally, but the school board budget was only \$85,000 and the lowest bid, submitted by J.M. Dunn and Son of Knoxville, was \$126,000. The plans were then redesigned. It was decided to extend the first floor as had originally been intended and to build the gymnasium and the cafeteria and shop spaces. The second floor was originally designed to continue around the entire building like the first floor, but it was decided to leave it as it was built in the first phase. The revised second phase was built for \$106,000 and classes continued while construction was in progress. The version of Tyson that exists today opened in the fall of 1938.

The financial problems which interfered with the construction of Tyson were common to schools throughout the country during the depression. School boards throughout the country were attempting to improve their physical plants at a time of severe economic hardship. Many people moved from the surrounding countryside to cities to find work and their children needed to be educated. Knoxville turned to the federal government for assistance. The PWA provided grants and loans to make the Knoxville school building program a success. The PWA would make available funds amounting to 45% of the construction cost. The city would be required to demonstrate its ability to pay back the loan part of the agreement. The PWA made \$578,182.00 available to Knoxville for its school construction budget in 1936. The loan portion of this money was \$318,000.00. The school board issued a resolution calling on the City of Knoxville to issue Permanent Improvement Notes and General Obligation Bonds to generate the funds needed to repay the PWA loan. The City would also impose a \$0.05 tax levy to pay for the bonds and notes and interest. There were seven school projects which were to be funded using this money: Eastport School, Tyson Junior High School, McCalla Avenue Elementary School, White Vocational School, Staub Elementary School (also by Baumann and Baumann), Maynard School, and Griffin School. Of these, Eastport, Maynard, Griffin and Tyson are still standing.

There were no other junior high schools constructed in Knoxville after Tyson was completed. Park and Rule Junior High were constructed in 1927. Park has been demolished and Rule was converted to a high school and had four additions which destroyed its architectural integrity. It is currently being converted by the Knox County Schools into a maintenance facility. Christenberry Junior High was built in 1935 and has been demolished. Beardsley Junior High was built in 1937 and has been demolished. South Knoxville Junior High was built in 1937 and is still standing. The school was enlarged in 1950 with a new building attached to the rear of the old building. It was then used as a junior/senior high school. It is currently unused. Tyson is the only junior high school to retain its architectural integrity.

In February of 1955 a fire broke out inside Tyson which destroyed the second floor roof and damaged many other parts of the building. The city again retained Baumann and Baumann to design the repair of the damage. They replaced the wooden roof rafters with steel open web joists in the entire 1936 portion of the building. The rest of the structure remained intact.

The architectural style and construction techniques used at Tyson are representative of the time it was built. The architect, A.B. Baumann, Jr., had to design a building that would meet the physical needs of the students and teachers who would use it while simultaneously

United States Department of the Interior  
National Park Service

# National Register of Historic Places Continuation Sheet

Section number 8 Page 12

Tyson Junior High School  
Knox County, Tennessee

---

providing the community with an up-to-date design that was aesthetically pleasing. The school would need to be solidly built because the city planned to use it for many years and because of the wear and tear that school buildings are subjected to. The depression was fully underway and the amount of money the city had to design and build the school was extremely limited, and the school had to be open in time for the 1936-37 school year.

The main body of the building is very efficiently laid out. All of the corridors are double-loaded, and the only space in the main body of the building that is not classroom or circulation space are two light courts which allow natural light to enter the inner classrooms. The interiors have large expanses of painted brick, and the floors and stairs were composition tile. The shower and locker rooms have glazed structural tile instead of ceramic tile and the ceilings on the first floor are plaster applied directly to the concrete above. Windows allow large amounts of natural light into the classrooms, reducing the need for electric lights. The roof structure is wood in most of the building, with open web steel joists on the second floor, and the walls are made of a plain red brick. These steps were all taken to contain costs without compromising the durability or utility of the building. In fact, by eliminating trim and reducing the amount of wall plaster, the durability was improved. This is part of the reason Tyson is still in such good shape after being used for fifty, and abandoned for ten years.

Tyson was built at a time when nineteenth-century architectural design styles were fading, and twentieth-century styles were beginning. Consequently, there are elements of old styles and new styles combined on the same building. The major theme of the school is derived from classical architecture which was made popular by the World's Colombian Exposition in 1893. "A portico was not a porch but an honorific device; uselessly broad and shallow, it rose two or three stories to help its building, which might otherwise be just a big, windowed box, to cut a figure in the world."(Kidney, pg 19) The portico at Tyson seems to have been designed with this purpose in mind. The projecting bays and the stepped-back treatment of the corners is derived from nineteenth century Beaux-arts classicism. "In the Baroque tradition, Beaux-arts architects admire the drama of motion...planes advance and recede; corners are cut away by multiple angles."(Rifkind, pg 219) The execution of these styles is not literal, the elements are interpreted by Baumann to suit the restricted budget. The pediment of the portico is attenuated almost to the point of disappearing. The capitals of the columns are carved in a low relief instead of the ornate carvings of the classical Corinthian order. The columns are square, not round and are not fluted as they would be in Greek architecture. The pilasters on the end bays are capped by plain stone "capitals" with a floral element carved into them, making no attempt at mimicking a classical pilaster. Art Deco elements are dominant in the ornamental details. The chevron ornament in the end bays, the zigzag pattern in the architrave, the diagonal muntin bars in transom of the main entry doors and the windows in the primary side entrances, and the concrete drapery and cylinder ornament which runs along the top of the second floor are Art Deco inspired elements. Perhaps the most interesting element is the concrete belt course which wraps around the two story portion of the school. This concrete is an extension of the floor slab for the second floor, and therefore reflects a modernist idea of expressing structure. Tyson is a nineteenth century classical brick "box" with twentieth century



United States Department of the Interior  
National Park Service

# National Register of Historic Places Continuation Sheet

Section number 8 Page 13

Tyson Junior High School  
Knox County, Tennessee

---

ornament applied to the outside. This shows again the transitional nature of the architecture of the building.

Mr. Baumann designed a building in Tyson Junior High which showed his skill as an architect. He used the knowledge he had gained over several years of practice and applied them to a building with an ambitious program and limited funds, and managed to create an architecturally interesting, solid, functional building which has lasted over sixty years. It shows the compromises that people were willing to make during the depression to produce a school which they, and generations to come, could be proud of.

Tyson Junior High School was used for its original purpose from the time it opened until 1982 when it became a middle school. Changing demographics and changing educational requirements forced the City School Board to re-evaluate the need for a Junior High School in an area that was no longer at the western edge of the city. The same growth west that had created an urgent need for Tyson in the 1930's had continued and accelerated. The bulk of the population of Knoxville was now much further west. Educational philosophy was also changing. The trend in education was to create larger centralized schools instead of smaller neighborhood schools. Tyson was not big enough to become a central school and the limits of its site precluded an addition. Tyson held on as a middle school for several years, but was closed in June of 1986, and the Knoxville City Schools were absorbed by the Knox County Schools in 1987.

Baumann and Baumann was the architecture firm that designed Tyson Junior High and was also Supervising Architects for the Board of Education at the time. Their duties included supervising the work of other architects working on school projects. They designed several schools for the city in addition to Tyson. Knoxville High School, which was constructed in 1910, was designed by Baumann Brothers. This building currently houses the offices of the county board of education. They also designed Staub Elementary (demolished) at the same time they were designing Tyson. "For almost a century the name Baumann was intimately associated with the history of Knoxville architecture. First Joseph F. Baumann then his brother Albert B. Baumann and finally Albert B. Baumann, Jr. designed hundreds of schools, churches, business buildings and residences from the 1870's to the 1950's."(MacArthur, 1984, pg 82) The architecture firm of Baumann and Baumann was actually the fourth iteration of an architectural firm which was founded in 1872, and whose legacy continues today. Joseph F. Baumann began to advertise himself as an architect in 1872, and his younger brother Albert apprenticed in his firm in 1882. In 1887 Albert was made a full partner and the firm was called Baumann Brothers. Baumann Brothers was one of the premiere architecture firms in Knoxville in the late nineteenth and early twentieth centuries. Over three hundred and fifty residences in Knoxville have been attributed to the Baumann Brothers. They also designed First Baptist Church in 1887, Fifth Avenue Presbyterian Church, Roman Catholic Church of the Immaculate Conception and Staub's theater. Joseph Baumann died in 1913, and the firm continued with Albert under the name A.B. Baumann until 1922, when Albert's son (Albert, Jr.) joined the firm and it was named Baumann and Baumann. During this period they designed Tyson as well as the downtown United States Post Office, the Cherokee Country Club and Sequoyah Presbyterian Church. Sometime after Albert B. Baumann Sr. died in 1942, Albert B. Baumann

United States Department of the Interior  
National Park Service

# National Register of Historic Places Continuation Sheet

Section number 8 Page 14

Tyson Junior High School  
Knox County, Tennessee

---

Jr. renamed the firm Baumann, Inc. Will Griffin and Gordon Mynatt III were architects in the firm of Baumann Inc. and in 1965 the name of the firm was changed to Griffin, Mynatt Associates. Jim Kaatz and Allen Jones joined the firm and in 1967 it was renamed Griffin, Mynatt, Kaatz. In 1978 Griffin and Mynatt left the firm and Larry Binkley joined and the firm changed names again to Kaatz and Binkley. Bill Morris joined the firm in 1990 and the firm acquired its present name of Kaatz, Binkley, Jones and Morris. The architecture firm that designed Tyson Junior High School is part of a legacy stretching over one hundred and twenty five years. Thousands of buildings in and around Knoxville and elsewhere share a connection with Tyson Junior High School and the region in which it was built. Tyson is a well preserved example of the work of Baumann and Baumann. It is the solution to the challenges that were faced by Knoxville and other cities across the nation during the depression as growth and migration forced financially strained cities to provide educational facilities for their children. It is an architectural bridge between the nineteenth and twentieth centuries. It is a school which thousands of Knoxville citizens attended and it occupies a prominent physical location in the city. Tyson Junior High School should be placed on the National Register of Historic Places to help preserve this important structure from an important period in our history.

Tyson Junior High School is currently undergoing rehabilitation using the preservation tax incentives. The majority of the space will be offices. The gym will remain a gym and the auditorium may be partitioned office spaces or a large meeting area. The building has been cleaned up, windows have been repaired, and a new interior entrance has been completed. Hall lockers have been removed and the basement space has been divided. Much of the work on the building is still in progress.

United States Department of the Interior  
National Park Service

# National Register of Historic Places Continuation Sheet

Section number   9   Page   15  

Tyson Junior High School  
Knox County, Tennessee

## MAJOR BIBLIOGRAPHIC REFERENCES

"A Comprehensive Survey-The Knoxville City Schools" Knoxville: The School Planning Laboratory, 1976.

"A History of the Knoxville Public Schools" Knoxville: The Curriculum Survey Committee of the Secondary Schools, 1953.

Armentor, Suzanne L. "A Case Study to Investigate the Adaptive Reuse of a Surplus Educational Facility: Tyson Middle School, Knoxville, Tennessee." MS thesis, The University of Tennessee, Knoxville, 1990.

Blumenson, John J.-G. Identifying American Architecture. Second Edition, New York, W. W. Norton & Co. Inc., 1981

Corlew, Robert E. Tennessee: A Short History. Second Edition, Knoxville: University of Tennessee Press, 1990.

Creekmore, Betsey Beeler. Knoxville. Third Edition, Knoxville: University of Tennessee Press, 1976.

Giffen, Lowell. A Citizen's View of Knoxville. Knoxville: Privately printed, 1984.

Holt, Andrew David. The Struggle for a State System of Public Schools in Tennessee, 1903-1936. New York: Bureau of Publications, Teachers College, Columbia University, 1938.

Jeffries, Margaret Ann Prater. "Baumann Brothers (1887-1913), Knoxville, Tennessee Residential Architecture and Interior Design." Ph.D. Dissertation, The University of Tennessee, Knoxville, 1993.

Kidney, Walter C. The Architecture of Choice: Eclecticism in America 1880-1930. New York, George Braziller, 1974.

Knoxville History Committee, East Tennessee Historical Society. Heart of the Valley Knoxville: East Tennessee Historical Society, 1976.

MacArthur, William J. Jr. Knoxville's History: An Interpretation. Knoxville: East Tennessee Historical Society. 1978

MacArthur, William J. Jr. Knoxville: Crossroads of the New South. Tulsa Oklahoma: Continental Heritage Press, Inc. 1984.

United States Department of the Interior  
National Park Service

# National Register of Historic Places Continuation Sheet

Section number 9 Page 16

Tyson Junior High School  
Knox County, Tennessee

---

McDonald, Michael J. and William Bruce Wheeler. Knoxville, Tennessee: Continuity and Change in an Appalachian City. Knoxville: University of Tennessee Press, 1983.

"Minutes, Knoxville Board of Education", Knox County Archives, 500 W. Church Ave., Knoxville TN.

Rifkind, Carole A Field Guide to American Architecture. New York, The New American Library, Inc., 1980.

"Tyson Junior High School Collection." McClung Historical Collection, Knox County Public Library System, Knoxville, TN.

United States Department of the Interior  
National Park Service

# National Register of Historic Places Continuation Sheet

Section number 10 Page 17

Tyson Junior High School  
Knox County, Tennessee

---

## VERBAL BOUNDARY DESCRIPTION

The boundaries of Tyson Junior High School are shown on the accompanying survey labeled TYSON SCHOOL PROPERTIES Map #108-B Group B Parcel 5. The property is bounded on the south by Kingston Pike, on the east by the legal property line, on the north by Third Creek and on the west by the legal property line.

## BOUNDARY JUSTIFICATION

The boundaries of Tyson Junior High School include the school building and all property located within the legal and historic property lines.

United States Department of the Interior  
National Park Service

# National Register of Historic Places Continuation Sheet

Section number 10 Page 18

Tyson Junior High School  
Knox County, Tennessee

---

## PHOTOGRAPHS

Photos by: Cope Associates Architects, Inc.  
315B Trane Lane,  
Knoxville, TN 37919

Date: November, 1996

Negatives: Tennessee Historical Commission

South facade, facing north  
#1 of 29

Southern half of east facade, facing west  
#2 of 29

Northern half of east facade, facing west  
#3 of 29

Eastern part of north facade, facing south  
#4 of 29

Northeast elevation of gymnasium, facing southwest  
#5 of 29

Northwest elevation of gymnasium, facing southeast  
#6 of 29

Western part of north facade, facing south  
#7 of 29

Northern half of west facade, facing east  
#8 of 29

Southern half of west facade, facing northeast  
#9 of 29

Main entry portico, facing north  
#10 of 29

Detail of main entry portico, facing north  
#11 of 29

Main entry doors, facing north  
#12 of 29

United States Department of the Interior  
National Park Service

# National Register of Historic Places Continuation Sheet

Section number 10 Page 19

Tyson Junior High School  
Knox County, Tennessee

---

Wall plaques in entry portico, facing west  
#13 of 29

Detail of ornament, eastern end of south facade, facing north  
#14 of 29

Detail of pilaster capital, eastern end of south facade, facing north  
#15 of 29

Detail of chevron ornament, eastern end of south facade, facing north  
#16 of 29

Detail of cornerstone, eastern end of south facade, facing north  
#17 of 29

Primary entrance, east elevation, facing west  
#18 of 29

Detail of marquee at primary entrance, east elevation, facing west  
#19 of 29

Detail of ornament at primary entrance, east elevation, facing west  
#20 of 29

Secondary entrance, east elevation, facing west  
#21 of 29

Gutter detail at pilaster, secondary entrance, east elevation, facing west  
#22 of 29

Light court and exterior of auditorium, facing northwest  
#23 of 29

Window detail, east elevation, facing west  
#24 of 29

Interior of auditorium, facing north  
#25 of 29

Interior of gymnasium, facing northeast  
#26 of 29

Interior of classroom, facing south  
#27 of 29

**United States Department of the Interior**  
National Park Service

# National Register of Historic Places Continuation Sheet

Section number 10 Page 20

Tyson Junior High School  
Knox County, Tennessee

---

Main corridor, first floor, facing east  
#28 of 29

Main corridor, second floor, facing east  
#29 of 29

---

Tyson Junior High School is in the process of being rehabilitated. A second set of photographs were taken to show the progress of the building.

Photos by: Cope Associates Architects, Inc.  
315B Trane Lane,  
Knoxville, TN 37919

Date: March, 1998

Negatives: Tennessee Historical Commission

South facade, facing north  
#1 of 23A

Main entry portico, facing north  
#2 of 23 A

Eastern part of south facade, facing northeast  
#3 of 23 A

Main entry doors, facing north  
#4 of 23A

East elevation, facing west  
#5 of 23A

Primary entrance, east elevation, facing west  
#6 of 23A

Secondary entrance, east elevation, facing west  
#7 of 23A

Northeast elevation of gymnasium, facing southwest  
#8 of 23A

Detail of ground floor entry door, north elevation, facing south  
#9 of 23A

Detail of ground floor window, north elevation, facing south  
#10 of 23A



United States Department of the Interior  
National Park Service

# National Register of Historic Places Continuation Sheet

Section number 10 Page 21

Tyson Junior High School  
Knox County, Tennessee

---

Main lobby, facing north  
#11 of 23A

Main lobby, facing south  
#12 of 23A

Tenant door from main lobby, facing west  
#13 of 23A

Marble detail, main lobby, facing northeast  
#14 of 23A

Tile floor detail, main lobby, facing north  
#15 of 23A

Auditorium, facing north  
#16 of 23A

Auditorium, facing south  
#17 of 23A

East main stair, facing west  
#18 of 23A

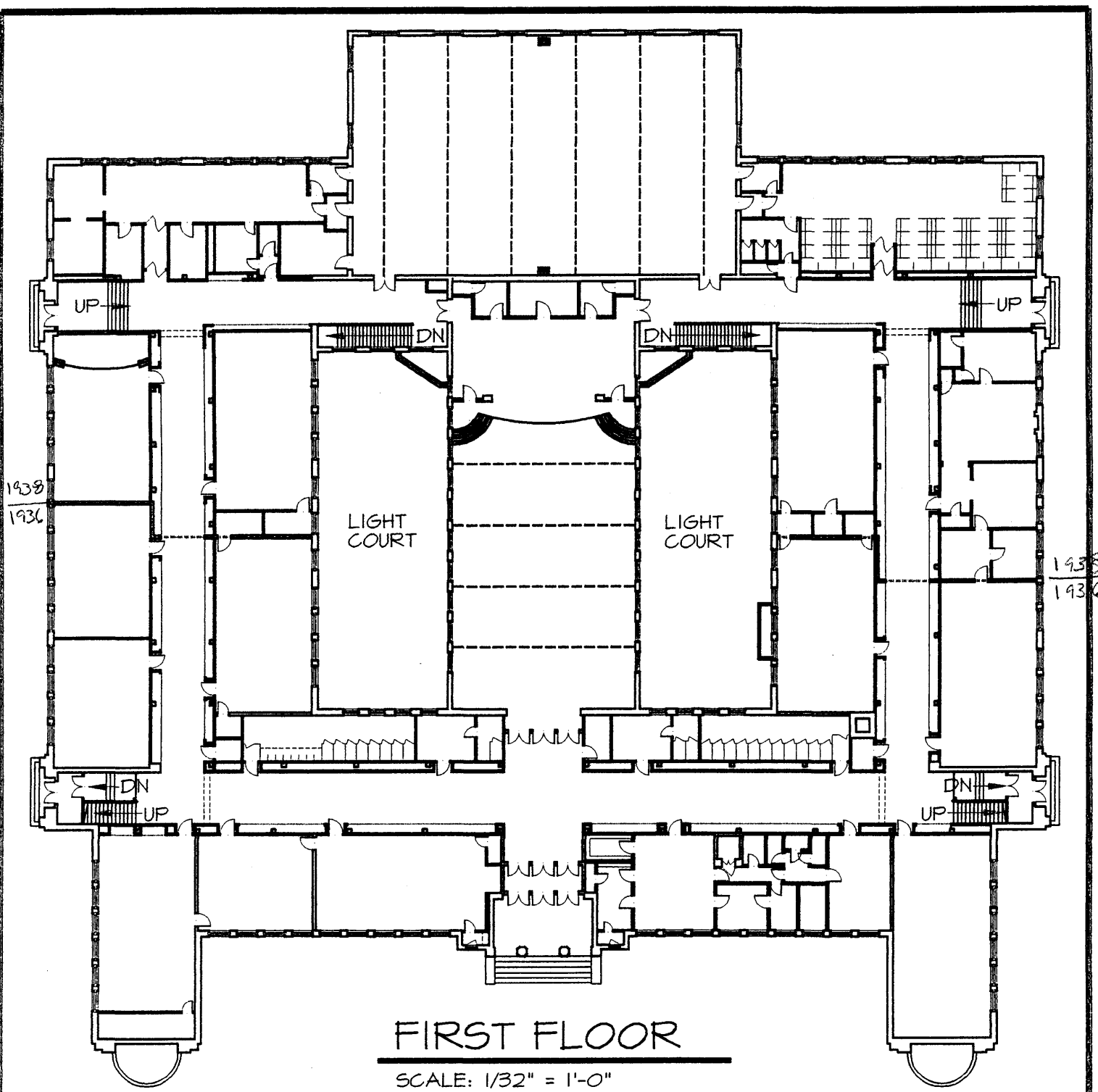
East main stair, facing west  
#19 of 23A

Gymnasium, facing southwest  
#20 of 23A

West secondary stair, facing east  
#21 of 23A

West light court, facing south  
#22 of 23A

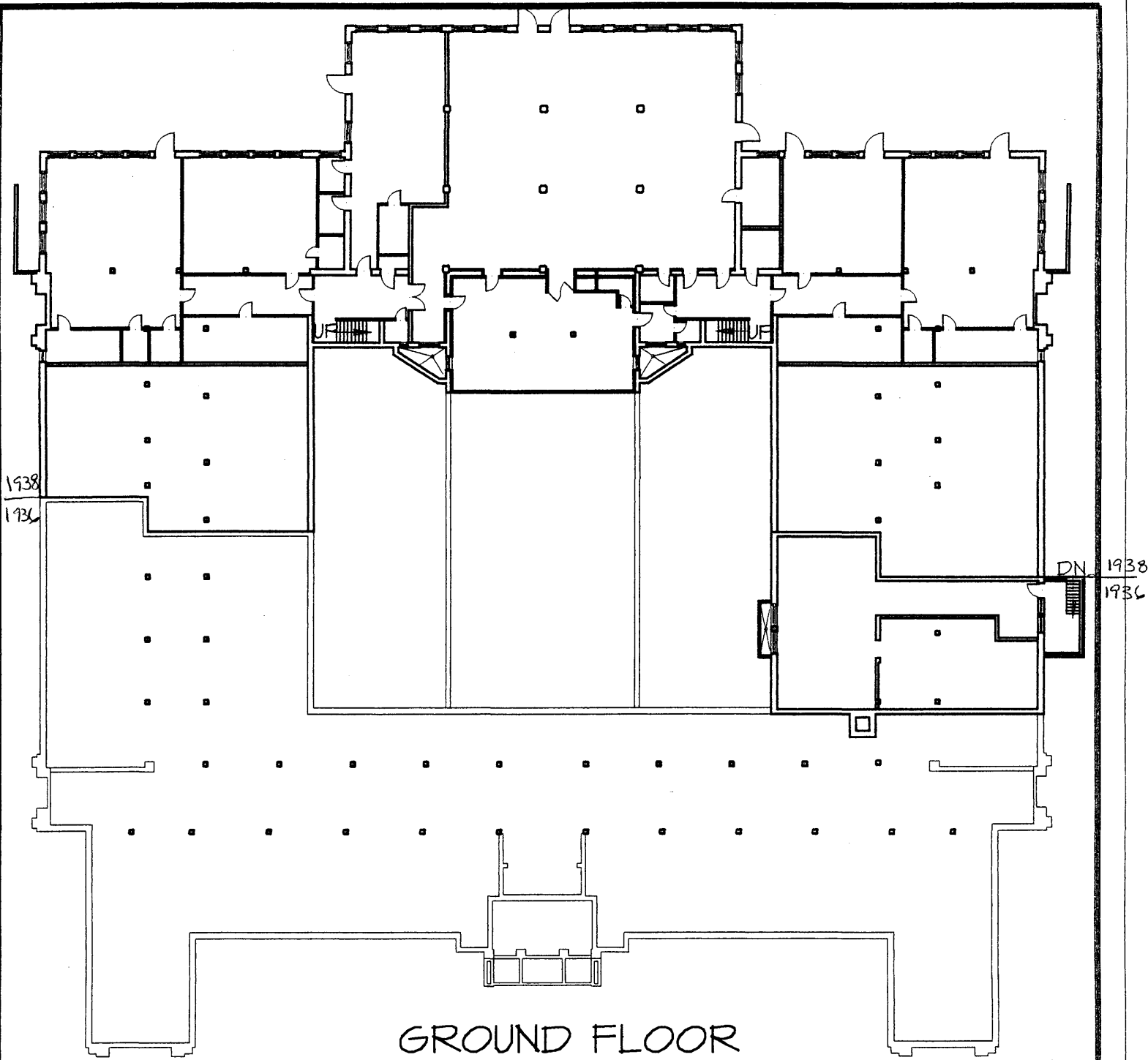
Detail of handicapped door to light court, facing east  
#23 of 23A



# TYSON JUNIOR HIGH SCHOOL

2607 KINGSTON PIKE  
KNOXVILLE, TENNESSEE

KNOX COUNTY



1938  
1936

DN 1938  
1936

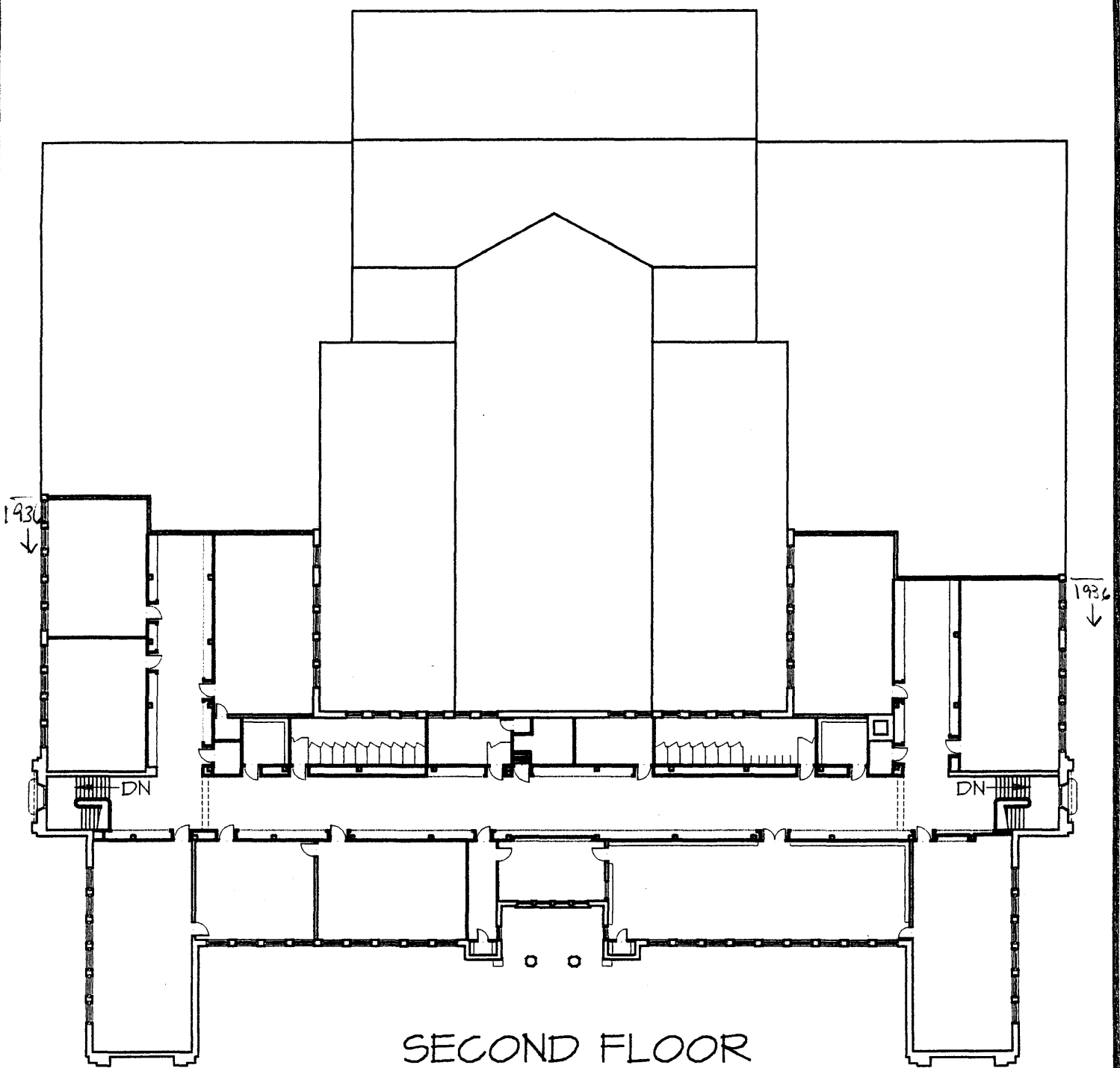
GROUND FLOOR

SCALE: 1/32" = 1'-0"

TYSON JUNIOR HIGH SCHOOL

2607 KINGSTON PIKE  
KNOXVILLE, TENNESSEE

KNOX COUNTY



SECOND FLOOR

SCALE: 1/32" = 1'-0"

TYSON JUNIOR HIGH SCHOOL

2607 KINGSTON PIKE  
KNOXVILLE, TENNESSEE

KNOX COUNTY

TYSON JUNIOR HIGH SCHOOL  
KNOX COUNTY TN

