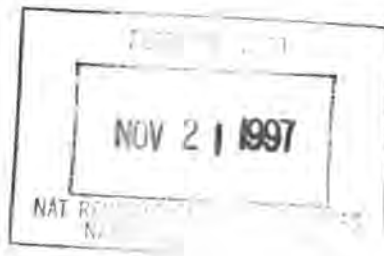


(Rev. 10-90)

United States Department of the Interior
National Park Service

National Register of Historic Places
Registration Form



This form is for use in nominating or requesting determinations for individual properties and districts. See instructions in How to Complete the National Register of Historic Places Registration Form (National Register Bulletin 16A). Complete each item by marking "x" in the appropriate box or by entering the information requested. If any item does not apply to the property being documented, enter "N/A" for "not applicable." For functions, architectural classification, materials, and areas of significance, enter only categories and subcategories from the instructions. Place additional entries and narrative items on continuation sheets (NPS Form 10-900a). Use a typewriter, word processor, or computer, to complete all items.

1. Name of Property

historic name HOPE CEMETERY

other names/site number _____

2. Location

street & number 119 WEBSTER STREET

N/A not for Publication

city or town WORCESTER

N/A vicinity

state MASSACHUSETTS

code MA

county WORCESTER

code 027

zip code 01603

3. State/Federal Agency Certification

As the designated authority under the National Historic Preservation Act of 1986, as amended, I hereby certify that this nomination request for determination of eligibility meets the documentation standards for registering properties in the National Register of Historic Places and meets the procedural and professional requirements set forth in 36 CFR Part 60. In my opinion, the property meets does not meet the National Register Criteria. I recommend that this property be considered significant nationally statewide locally. (See continuation sheet for additional comments.)

Judith B. McDonough

11/13/97

Signature of certifying official/Title Judith B. McDonough, Executive Director
Massachusetts Historical Commission, State Historic Preservation Officer

Date

State or Federal agency and bureau _____

In my opinion, the property meets does not meet the National Register criteria. (See continuation sheet for additional Comments.)

Signature of certifying official/Title _____

Date _____

State or Federal agency and bureau _____

4. National Park Service Certification

I, hereby certify that this property is:

- entered in the National Register
 - See continuation sheet.
- determined eligible for the National Register
 - See continuation sheet.
- determined not eligible for the National Register
- removed from the National Register
- other (explain): _____

Edson H. Beall

Signature of the Keeper

Date of Action

12/22/97

Hope Cemetery
Name of Property

Worcester, Massachusetts
County and State

5. Classification

Ownership of Property

(Check as many boxes as apply)

(Check only one box)

- private
- public-local
- public-State
- public-Federal

- building(s)
- district
- site
- structure
- object

Number of Resources within Property

(Do not include previously listed resources in the count.)

Contributing	Noncontributing	
16	3	buildings
1		sites
7		structures
13		objects
37	3	Total

Name of related multiple property listing

(Enter "N/A" if property is not part of a multiple property listing.)

N/A

Number of contributing resources previously listed in the National Register

0

6. Function or Use

Historic Functions

(Enter categories from instructions)

FUNERARY: Cemetery

Current Functions

(Enter categories from instructions)

FUNERARY: Cemetery

7. Description

Architectural Classification

(Enter categories from instructions)

N/A

Materials

(Enter categories from instructions)

foundation _____
walls _____

roof _____
other _____

Narrative Description

(Describe the historic and current condition of the property on one or more continuation sheets.)

(See continuation sheet)

United States Department of the Interior
National Park ServiceNational Register of Historic Places
Continuation SheetHope Cemetery
Worcester (Worcester Co),
MassachusettsSection number 7 Page 1

SECTION 7: NARRATIVE DESCRIPTION

Hope Cemetery, established in 1854, is part of the pastoral cemetery movement which was inspired by romantic perceptions of nature, art, national identity and the melancholy theme of death. This movement drew upon innovations in burial ground design in England and France -- in particular the Parisian Père Lachaise Cemetery, established in 1804 and developed according to an 1815 plan. Led by Mount Auburn Cemetery in Cambridge, Massachusetts, (1831), America's pastoral cemeteries were typically established, as was Hope Cemetery, around elevated view sites on the outskirts of the city. To achieve naturalistic effects, gracefully curved pathways and watercourses were adapted to rolling land forms. Contrast and variation were employed in the massing of trees and plants as well as the arrangement of ornamental features.

Situated near the top of the hill on Webster Street, immediately south of the Webster Square section of the city of Worcester, Hope Cemetery is a carefully planned cohesive landscape whose overall character is defined by the relationship of features within it. The cemetery occupies a rolling area of land between Kettle Brook to the south, Curtis Ponds to the west and the Middle River on the north. The siting of roads and paths, trees and shrubs, the placing and scale of mausoleums, and the integration of the earlier burial grounds all reflect a sure sense of design, not only in 1854 but over the ensuing years.. Over the years since its inception, Hope's terrain has been carefully worked to create views and vistas which enhance the natural beauty of the site. Entry through the 1917 Solomon Nixon Gates (west) from Webster Street brings one up a slight grade past the impressive memorials and mausoleums which stand north of the entrance, facing the well-traveled street. From this elevated point, a broad view of the southwest sector of the cemetery can be seen, along with the sweep of the granite wall as it marches south down Webster Street to the gates (1936) currently in use. One can then continue east along the cemetery's Chestnut Avenue, which follows the lower edge

(continued)

United States Department of the Interior
National Park ServiceNational Register of Historic Places
Continuation SheetHope Cemetery
Worcester (Worcester Co),
MassachusettsSection number 7 Page 2

of the ridgeline, traversing the northern half of the site from northwest to southeast. (To alleviate confusion, all references to roads within Hope Cemetery will be underlined.) This land form is the major height of land in the cemetery. Continuing along Chestnut Street on to Walnut Avenue one reaches Highland Avenue, a short road lined with magnificent memorials ending in a superb view to the east across the Middle River plain to College Hill with its towers of Holy Cross College. The ridge falls away quite steeply to the north where the impressive mausoleum circle (Section 12) stands in its lee. As one travels further north from the circle, the land descends more gradually toward the Middle River which lies just outside the north boundary. The office and barn occupy the northwest corner of the cemetery on the downslope of the north side of the ridge. The southwest quadrant of the cemetery is more level and contains the active sections. The southeast segment again rises gradually with views to central Worcester and nearby Interstate 290.

The cemetery is enclosed on the west by a granite wall and a granite and iron fence. Much of the remaining boundary is delineated by steel mesh fencing with metal poles. A portion of the north boundary along the Middle River is marked with an iron fence.

The unusual size and balanced beauty of Hope Cemetery, taking full advantage of the hilly terrain, points to some type of landscape designer, still to be identified. The winding roads, the hills and vistas, especially the stunning view to the stone towers of Holy Cross College, retain the look and feel of the rural cemetery. Hope Cemetery has a high degree of integrity as all the different sections of the cemetery are carefully planned, almost all the current burials are interred in a new section which does not impact the older areas and there is unusually little commingling of new gravestones with old. In addition, many components of the original cemetery remain, such as the road and pathway signs.

There are a number of specimen trees, the most exceptional being three tree champion European

(continued)

**United States Department of the Interior
National Park Service****National Register of Historic Places
Continuation Sheet**Hope Cemetery
Worcester (Worcester Co),
MassachusettsSection number 7 Page 3

Beeches; with a DBH (Diameter at Breast Height) of 55" to 59." They are the largest trees in the Cemetery. (Photo #5, Site Plan #41) There are also tree champion Norway Maples, Red Maples, Sugar Maples, Sweet Birches, Katsuras, Coast White Cedars, American Beeches, White Ash, White Oaks, Scarlet Oaks and Red Oaks. The majority of the trees in the cemetery are Sugar Maples and Norway Maples. (Warren P. Leach, "Hope Cemetery: Horticultural Survey and Tree Inventory," Jan. 1996)

The lots for the City of Worcester's earlier burial grounds, the remains and gravestones of which were moved to Hope Cemetery, are adroitly integrated into the overall cemetery plan. There are also sections devoted to the Grand Army of the Republic (the Memorial is composed of a massive tripod of three black cannon, 1892, Site Plan #29), Spanish War Veterans, World War Veterans, Societies such as the Masons, Odd Fellows (Site Plan #36, 37), Red Men, Syrian Brotherhood and several churches and synagogues.

There are two major buildings at Hope Cemetery. The first is the somewhat altered Office Building with storage and machine shops below. It was originally built in 1882, enlarged and improved in 1889, with a vault added in 1930. (Site Plan #2) The barn (1889, Photo #14, Site Plan #3), which replaced the earlier structure of 1876, retains its architectural integrity. It is a fine Stick Style structure, characterized by its verticality, angularity, steeply pitched roof and cupola, and overhanging eaves which are pierced with dormers. The Queen Anne Style is seen in the shaped shingles on the second floor which wrap around the corners of the structure. Two former buildings in the cemetery were the Curtis Chapel, dedicated in 1891 and taken down in 1961 and the Superintendent's house, erected in 1895 and removed after 1940.

There is also a large, three-chambered granite Receiving Tomb (1887, Site Plan #25), designed by Fuller & Delano. This is the third receiving tomb to be constructed in the cemetery; the two earlier ones, no longer extant, were built in 1854 and 1872.

(continued)

United States Department of the Interior
National Park ServiceNational Register of Historic Places
Continuation SheetHope Cemetery
Worcester (Worcester Co),
MassachusettsSection number 7 Page 4

Handsome walls border parts of the cemetery. The 1867 Annual Report, (City Doc. No. 21, p. 150) reports that the Commissioners "expressed the intention of entering upon the construction of a 'tasteful and enduring fence' with a spacious entrance.....early in the season, they engaged Mr. Earle [Stephen C. Earle, 1839-1913] an architect of approved reputation, to furnish a plan of a suitable gateway (not extant)...." The Earle Gothic Revival fence (Photo #2, Site Plan #21) is composed of wrought iron work, executed by "Mr. H. C. Fish," on a granite curbing, with cut granite posts, by "Mr. A. G. Mann," (1870 Annual Report, City Doc. No. 24, p. 212) exhibiting incised trefoils. Stephen Earle was a well respected Worcester architect particularly noted for his Worcester churches: St. Mark's, St. Matthew's, St. John's Episcopal, and Lincoln Square Baptist. (Margaret H. Floyd: Society of Architectural Historians Worcester Tour, March 27, 1976) Earle designed the 1891 Curtis Chapel for Hope Cemetery, no longer extant. Continuing along Webster Street towards Hope Avenue to the south is the WPA granite wall with granite posts capped with low-pitched pyramidal tops (Photo #3, Site Plan #22), constructed in 1936.

Joining the 19th and 20th century walls are the Solomon Nixon Gates (Photo #1, Site Plan #23) presented to the cemetery in 1917 by Mrs. Nixon in memory of her husband. Two stately granite arches trimmed with brownstone frame the wrought iron gates to create an imposing yet welcoming entrance to Hope Cemetery.

At the onset of Hope Cemetery's establishment, the Cemetery's Commissioners declared in 1857, that it was "becoming a beautiful and attractive place of sepulture...." (Annual Report, 1858, City Doc. No. 12, p. 13). The philosophy of Dr. Jacob Bigelow, the founder of Mount Auburn Cemetery in Cambridge, Massachusetts, who emphasized nature with beautifully landscaped grounds (David Sloane, The Last Great Necessity, p. 45) influenced the Hope Cemetery's founders in their endeavor of creating a similar garden cemetery for the city of Worcester. Paths were laid out and named for trees (Maple, Sycamore, Chestnut, Pine, Cedar, Beech, Hemlock, Ash, Locust and others), picturesque views of "undulating surfaces" and gentle treed slopes (Photo #4 and #5) offered mourners scenes of

(continued)

United States Department of the Interior
National Park ServiceNational Register of Historic Places
Continuation SheetHope Cemetery
Worcester (Worcester Co),
MassachusettsSection number 7 Page 5

idyllic peace and tranquillity. Initially, simple tombstones and monuments honored the dead. By the end of the 19th century larger, more ornamental, more imposing structures were built as resting places for the departed and funerary architecture now included mausoleums and large monuments.

Hope Cemetery contains a remarkable array of late 19th and early 20th century mausoleums which reflect most of the revival styles of this specialized type of funerary architecture. The word "mausoleum" is derived from the Greek "mausöleïon", which was the magnificent tomb of Mausölus, king of Caria, erected in 353 BC at Halicarnassus in Asia Minor by his Queen Artemesia. It is no longer extant (today it would have been in the modern city of Budrum, Turkey) but archeological historians have presented us with a conjectural drawing (World Architecture, Fig. 136, p. 54) based on writings of Pliny which shows a columnar rectangular enclosure above a podium, surmounted by a frieze (parts of it are in the British Museum), a pyramidal roof, and the figure of Mausolus riding a four-horse chariot. This vanished structure, one of the seminal buildings in the world of funerary monuments, influenced their designs for centuries. Previously, the Greeks and the Hellenes had used an unpretentious slab or stele. Later, a stone sarcophagus, already used in the Orient, appeared, to be followed by temple forms which served as a setting for relief sculpture. (Kimball and Edgell, p. 94-95). Some of the architectural and decorative elements of this Hellenistic monument are seen in some of the mausoleums of Hope Cemetery as in many other mid-19th century garden cemeteries in the United States thus creating a link to the classic past with a graphic history of sepulchral architecture in New England

The prevalent revival styles in memorial art, the Classical, the Gothic and the Egyptian are represented at Hope Cemetery with outstanding examples. The most popular and often used revival style is based on classical elements, be they Greek, Roman, Hellenistic, or Renaissance. The most imposing structure designed in this mode is the magnificent Orlando W. Norcross (1829-1920) Mausoleum (1909, Section 80, Photo #6, Site Plan #14), a Roman Doric peripteral temple-tomb having a row of free-standing columns on all four sides on a stylobate sited on an imposing site at the crest of

(continued)

United States Department of the Interior
National Park ServiceNational Register of Historic Places
Continuation SheetHope Cemetery
Worcester (Worcester Co),
MassachusettsSection number 7 Page 6

a gentle hill. The classical vocabulary includes an entablature composed of triglyphs and metopes, and a plain pediment. A younger brother, James Atkinson Norcross (1831-1903) is also commemorated in Hope Cemetery, with its only rib-domed Renaissance Revival mausoleum which is fronted with a shallow arched pediment. (Section 46, Photo #8, Site Plan #13) This stone ashlar structure, chamfered at the corners, was constructed in 1903, the year of James Norcross' death.

Another fine example of the classical sepulchral monument is the Bigelow and Stevens Mausoleum (1916, Section 12, Site Plan #5), an Ionic prostyle (temple with shallow front portico) templed form with a plain entablature which creates an appropriate background for the lettering of the names. As with the O. W. Norcross monument, it is set on a low podium, thus reinforcing its classical temple form. Further classical examples include the Hanff Mausoleum (1903, Section 34, Site Plan #7) with shallow wings to the sides, a low pitched gabled roof and a fine pedimented entrance flanked with Doric pilasters whose design seem to emanate from 18th century English pattern books. It is partially set in the hillside, a not uncommon feature in mausoleums in garden cemeteries. (See Laurel Hill mausoleums, Philadelphia in Kenneth T. Jackson and Camilo Jose Vergara, Silent Cities, p. 21) Another mausoleum similarly sited is the J. K. Warren Monument (c. 1924, Section 2, Site Plan #19) exhibiting a stark, severe classicism evidenced by the pilaster framing the barely projecting central pavilion. Ornamentation is at a minimum, fine proportions and horizontal banding of the stones endow the structure with strength.

At times, only the sculptural decoration such as the elegant iron anthemion gracing the entrance of the Albert A. Morton Mausoleum (1917, Section 34, Site Plan #12) identifies its classical derivation. This particular monument, enveloped with Richardsonian troglodytic stones, is a powerful and impressive presence.

(continued)

United States Department of the Interior
National Park ServiceNational Register of Historic Places
Continuation SheetHope Cemetery
Worcester (Worcester Co),
MassachusettsSection number 7 Page 7

Besides characteristic classical ornamentation, Hope Cemetery is also replete with funerary iconographic symbols within traditional forms. The Thomas Prince Mausoleum (1910, Site Plan #15), a rough cut ashlar pedimented structure with Doric columns in antis has a fine downturned torch design, emblem of death and devastation, (Henriette M. Forbes, "Symbolic Cemetery Gates in New England," 1933, reprinted in Markers VII, p. 7), on the entrance. This same motif boldly carved by Solomon Willard in 1841 is on the side pylons of the Granary Burying Ground Cemetery gate in Boston.

The Egyptian Revival was initiated early in the nineteenth century when it was popularized in books published by French scholars Napoleon brought along on his Egyptian campaign of 1789-99 (Description de l'Egypte, Benedikt Taschen, 1994 reprint of Napoleon Bonaparte's 1802 Edition). Obelisks, sphinxes, and pyramids were made familiar by the dissemination of literature, photographs and paintings on this exotic subject. Used as a furniture and decorative art style and by architects for prisons and cemetery gates (for their association with death and rebirth), it was not until the end of nineteenth century that Egyptian Revival temple tombs (mausoleums) were constructed as funerary structures. Hope Cemetery has two fine Egyptian Revival mausoleums, the James Edwin Wesson (1910, Section 12, Photo #7, Site Plan #20) and the Henry Francis Harris Mausoleum (1915, Section 81, Site Plan #8). The former, a solid structure with battered walls, a typical Egyptian Revival cavetto (concave) cornice embellished with a winged orb and foliated capitals on its columns in antis, is an archetypal example of the style. The Henry Francis Harris Mausoleum exhibits most of the above revival features, the foliated columns in antis, battered walls and a cavetto cornice but here, within a classical format, the flat roof has a slight pediment and the front area is articulated by a fine curved classical exedra, inviting strollers to stop, rest and contemplate. The Marcy Mausoleum (1901, Section 1, Photo #9, Site Plan #11) is the only monument in Hope Cemetery with an architectural attribution. It was designed by the Worcester architects Albert A.

(continued)

United States Department of the Interior
National Park ServiceNational Register of Historic Places
Continuation SheetHope Cemetery
Worcester (Worcester Co),
MassachusettsSection number 7 Page 8

Barker [1853-1905] and Walter B. Nourse [1854-1906].) The family tomb, erected by Mr. Frank M. Marcy in memory of his parents, was described in the May 1903 Worcester Magazine as a building whose design is "classic Greek, simple and dignified, without any pretensions to ornate ornamentation, yet is tasteful and pleasing in appearance."(p. 164) The ornamentation is not pretentious, but is more exuberant than in other Hope Cemetery tombs. White marble doors, light granite fluted pilasters, double colonettes and entablature create strong contrasts with the dark granite walls. Textural differentiations are also seen in the richly carved composite capitals above the smooth drums of the double colonettes of the facade. Further enrichments include relief carvings of wreaths on the plinth of the double columns, the denticulated row under the eaves, the pedimented gable piercing the hip roof and the classical free-standing urns fronting the facade. It is one of the most elaborate tombs in the cemetery, hardly "simple", but "dignified" and a most important historical and architectural component of Hope Cemetery.

The Gothic Revival is represented by the magnificent Houghton Mausoleum (1901, Photo #10, Site Plan #9). Its restrained interpretation of medieval structural features and its verticality endow it with quiet dignity amid its classical and Egyptian neighbors with their trabeated horizontal forms in Section 12. Conserved in 1994, the rusticated facade is composed of a gothic entrance set within a slightly projecting gabled pavilion which reiterates the main gable lit by a trefoil window. Vestigial buttresses flank the walls and low side projections; the apse end is pierced by lancet windows filled with stained glass. It is a miniature gothic chapel, picturesque in form, romantic in its evocative quality, and superb in its architectural sense of Christian appropriateness.

One of the outstanding family plots in the cemetery is that of Loring Coes (Photo #11, Site Plan #27), designed in 1874. There is a fine white marble statue of a young maiden holding a wreath (1906), by the noted local sculptor, Andrew O'Connor, Sr. The metalwork of the fence and gate are reminiscent of the work of Samuel Yellin.

(continued)

**United States Department of the Interior
National Park Service****National Register of Historic Places
Continuation Sheet**Hope Cemetery
Worcester (Worcester Co),
MassachusettsSection number 7 Page 9

Other noteworthy statues and monuments include two unusually well executed white bronzes. The first is the Thomas S. Sloan (1832-1908) Monument, 1909, of "Hope." This allegorical figure goes back to the Renaissance and is always portrayed holding an anchor with eyes raised to the heavens. The second white bronze, "Memory," a maiden holding a swag of flowers, is the Parlin Monument (David Parlin, d. Jan 12, 1915; Kate Miles Parlin 1836-1916, Photo #12, Site Plan #32).

An additional memorial, an exedra of high artistic quality, is the granite Pfaffman Monument (Philip Martin Pfaffman 1855-1936; Helen Butler Pfaffman 1865-1927, Photo #13, Site Plan #38). The fine bronze insert is signed by the architect, W. D. Kenneth, and the sculptor, J. Novelli.

Local sculptors known to have works in Hope Cemetery are the already mentioned Andrew O'Connor, Sr. (1847-1924) and his sculptor son, Andrew O'Connor, Jr. (1874-1941). Andrew Sr. was the sculptor for the "Fisher Boy" (1915) in Worcester's Elm Park. Andrew Jr., the executor of the bronze bas relief of Orlando Whitney Norcross at the Worcester City Hall, was the sculptor of the graceful Whittall Monument (Matthew John Whittall d. Oct. 31, 1922, Site Plan #40) in Hope Cemetery. Arthur B. Hewett sculpted the appealing Coombs Firemen's Memorial (1896) of Chief Simon E. Coombs. The sculptor, Bruce Wilder Saville, is also represented at Hope Cemetery.

Archaeological Description

Prehistoric sites have not been identified within the boundaries of the Hope Cemetery, however, sites may be present. Two known prehistoric sites have been recorded in the general area (within one mile). Locational characteristics for the cemetery are also favorable for many types of prehistoric sites. The area includes several well drained level to moderately sloping locales broadly surrounded by the Middle River in the north, Kettle Brook to the south, and Curtis Ponds to the west. Given the above factors, the size of the cemetery (approximately 170 acres) and the impacts from grave excavations, a moderate to high potential exists that sites are present.

(continued)

**United States Department of the Interior
National Park Service**

**National Register of Historic Places
Continuation Sheet**

Hope Cemetery
Worcester (Worcester Co),
Massachusetts

Section number 7 Page 10

There is also a high potential for locating historic archaeological resources in the cemetery locale. Early graves including the Nash (1840) and Gates (1850) burials, incorporated into the later post 1854 cemetery may represent family plots for farmsteads in the area prior to 1854. This information also indicates the potential for recovering structural remains related to farm houses, outbuildings and occupational related features (trash pits, privies, wells) associated with the farms. Structural remains of buildings no longer extant but related to the Hope Cemetery may also exist including the Curtis Chapel, Superintendents House, 1876 barn, and 1854 and 1872 receiving tombs. The remains of additional outbuildings including a pre 1876 barn may also be present. Human remains including those of paupers, unknown persons and other indigents may also be present in unmarked graves. Artifact remains and patterns of burial goods left at grave sites may also be present.

(end)

Hope Cemetery
Name of Property

Worcester, Massachusetts
County and State

8. Statement of Significance

Applicable National Register Criteria

(Mark "x" in one or more boxes for the criteria qualifying the property for National Register listing.)

- A** Property is associated with events that have made a significant contribution to the broad patterns of our history.
- B** Property is associated with the lives of persons significant in our past.
- C** Property embodies the distinctive characteristics of a type, period, or method of construction or represents the work of a master, or possesses high artistic values, or represents a significant and distinguishable entity whose components lack individual distinction.
- D** Property has yielded, or is likely to yield, information important in prehistory or history.

Criteria Considerations

(Mark "x" in all the boxes that apply.)

Property is:

- A** owned by religious institution or used for religious purposes.
- B** removed from its original location.
- C** a birthplace or grave.
- D** a cemetery.
- E** a reconstructed building, object, or structure.
- F** a commemorative property.
- G** less than 50 years of age or achieved significance within the past 50 years.

Narrative Statement of Significance

(Explain the significance of the property on one or more continuation sheets.)

9. Major Bibliographical References

(Cite the books, articles, and other sources used in preparing this form on one or more continuation sheets.)

Previous documentation on file (NPS):

- preliminary determination of individual listing (36 CFR 67) has been requested
- previously listed in the National Register
- previously determined eligible by the National Register
- designated a National Historic Landmark
- recorded by Historic American Buildings Survey # _____
- recorded by Historic American Engineering Record # _____

Areas of Significance

(Enter categories from instructions)

- Art
- Architecture
- Community Planning and Development
- Landscape Architecture
- Social History

Period of Significance

1854-1947

Significant Dates

1854

Significant Person

(Complete if Criterion B is marked above)

N/A
(See continuation sheet)

Cultural Affiliation

N/A

Architect/Builder

Earle, Stephen: Earle & Fuller
Fuller & Delano
(See continuation sheet)

Primary location of additional data:

- State Historic Preservation Office
- Other State Agency
- Federal agency
- Local government Library, Town Hall
- University
- Other

Name of repository:
Hope Cemetery Archives
Worcester Historical Museum

United States Department of the Interior
National Park ServiceNational Register of Historic Places
Continuation SheetHope Cemetery
Worcester (Worcester Co),
MassachusettsSection number 8 Page 1**8. NARRATIVE STATEMENT OF SIGNIFICANCE**

Worcester's Hope Cemetery possesses integrity of location, design, setting, materials, workmanship, feeling and association and meets National Register Criteria A, B and C on the local level. Laid out in 1854, the city-owned 170 acre Hope Cemetery is bordered on its principal side, Webster Street, with handsome granite walls (1869 and 1936). Sited on a rising slope, the cemetery has its grandest vista to the southeast where it looks across the Middle River Valley to the stone towers of Holy Cross College. Under Criterion A, Hope Cemetery is important in Worcester's history as not only the City's sixth public burial ground but as the vessel of the five earlier burial grounds whose remains and gravestones have been moved to and sensitively placed in Hope Cemetery. These earlier burial grounds include the first burial ground at Thomas and Summer Streets (1713), portions of the Second Burying Ground on Worcester Common (1728), Raccoon Plain Burial Ground, Mechanic Street Burying Ground (c. 1786) and Pine Meadow Burying Ground (1828). Hope Cemetery is associated with the lives of persons significant in Worcester's past. These include the nationally famous builders, the Norcross Brothers, James Atkinson Norcross and Orlando Whitney Norcross, the well-known sculptors, Andrew Sr. and Andrew Jr. O'Connor, significant historical figures, such as Captain Peter Slater who led the Boston Tea Party raiders, prominent civic leaders such as Levi Lincoln, Governor of Massachusetts, and leading industrialists including Loring Coes, James Wesson, Iver Johnson and Matthew Whittall. As an excellent example of the mid nineteenth century "rural" or "garden" cemetery movement, and for the outstanding architecture of its magnificent mausoleums along with monuments and plaques by several local sculptors, Hope Cemetery meets Criteria C. As an outstanding rural cemetery possessing unusual design value, Hope Cemetery also qualifies under Criteria Consideration D.

The Act establishing Hope Cemetery was signed by Governor Emory Washburn, April 28, 1854. It provided any citizen of Worcester the right of burial in Hope Cemetery regardless of his birthplace, color or religious belief. (Telegram, June 1, 1854) The original fifty acres of land was purchased for \$1855 in 1851 and Hope

(continued)

**United States Department of the Interior
National Park Service****National Register of Historic Places
Continuation Sheet**Hope Cemetery
Worcester (Worcester Co),
MassachusettsSection number 8 Page 2

Cemetery was consecrated May 22, 1852. The Act also placed the charge and oversight of this cemetery in the hands of five commissioners, to be chosen by the City Council. The first governing board consisted of Gov. Emory Washburn, Levi Lincoln, Ichabod Washburn, Albert Tolman and Loring Coes (Franklin P. Rice, ed., The Worcester of Eighteen Hundred and Ninety-Eight, p. 29), three of whom are buried in Hope Cemetery.

Hope Cemetery appears to be the sixth of Worcester's public burial grounds. The first burial ground, at the junction of Thomas and Summer Streets, was established in 1713. The seventeen graves were marked by heaps of stone, none of which had inscriptions. (Charles Nutt, History of Worcester and its People, p. 482) The Second Burying Ground was laid out on the southeast quadrant of Worcester Common in 1728 and burials took place there until 1824. In 1965 the remains of 111 persons and 47 gravestones were removed from the east end of the Common and buried in Section 107 of Hope Cemetery. Ten more gravestones were removed in 1994, also from the east end of the Common, and are presently (1996) stored in the Receiving Tomb.

It is unclear when Raccoon Plain Burial Ground was established but 16 persons were removed in 1857 and brought to Hope Cemetery. Mechanic Street Burying Ground was founded c. 1786, interments continued until 1859, and in 1878-1879, 1116 bodies were moved to Hope Cemetery. Pine Meadow Burying Ground's first burial was in 1828 and the removal of 658 remains to Hope Cemetery began in 1863-1866 and was completed in 1872-1877 to accommodate purchases of land by the Boston & Albany Rail Road Corp.

Private cemeteries in Worcester include Rural Cemetery (1838), as well as Notre Dame Cemetery (1885) and Swedish Cemetery (1885) which lie across Webster Street from Hope Cemetery. St. John's Cemetery (1848) and B'nai Brith Cemetery adjoin Hope Cemetery to the north. (Ann C. Nelson, Hope Cemetery Commissioner, November, 1996). These cemeteries, too, merit further study and could also, potentially, be eligible for listing in the National Register.

Prior to the formal establishment of Hope Cemetery in 1854, there were two early burials on the Cemetery land: James H. Nash in 1840 and Eliza D. Gates in 1850. (Florence T. Allen, comp. "Old Cemeteries of

(continued)

United States Department of the Interior
National Park ServiceNational Register of Historic Places
Continuation SheetHope Cemetery
Worcester (Worcester Co),
MassachusettsSection number 8 Page 3

Worcester, Massachusetts.") There are now over 70,000 persons buried in Hope Cemetery, with an estimated 55,000-65,000 gravestones. Sufficient land was acquired between 1851 and 1937 to expand the original 50-acre tract to 145 acres and now the Cemetery contains over 170 acres.

Gill Valentine, Esq. (1788-1878), the well-known Worcester surveyor was paid \$117.20 for "surveying and making plan" for Hope Cemetery in 1854. In the same year he prepared "an accurate survey of the ancient burying ground upon the common" (City of Worcester, Annual Report, 1854. City Doc. No. 8, p. 40), this, referring to the Second Burying Ground on Worcester Common. While the survey of Hope Cemetery has yet to be discovered, the Second Burying Ground survey is extant and has proved accurate. From 1854 to 1867, Gill Valentine was paid almost yearly for further surveying, as more and more of the cemetery was developed.

An impressive number of improvements were effected in Hope Cemetery by the Works Progress Administration between 1934 and 1938. Both money (\$600,000), and manpower (300 men working daily for four years) were poured into the aging Cemetery. The most prominent result of this effort is the 1600' long granite wall along Webster Street (Photo #3, Site Plan #22) as well as the fieldstone entrance at Curtis Avenue, both completed in 1936. The internal circulation system was also improved with the paving of over 20 miles of dusty, rutted dirt roads. The trees received an enormous amount of attention: over two hundred dead, dying or diseased trees were removed and more than three hundred trees, mostly rock maples, were planted in their stead. Another 500 trees underwent the tree surgeon's saw for pruning and cavity work. It was reported that "... some of the tallest and most beautiful trees, although seriously damaged and diseased have been saved ... through the science of tree surgery ... In some cases crews of men labored months to save a single, sturdy, old veteran." (Sunday Telegram, Section Five, Sept. 25, 1938)

On the occasion of the centennial memorial service for Hope Cemetery, City Councilor Paul S. Morgan underscored the association of the Cemetery with the lives of persons significant in Worcester's past saying: "For here lie some of the leaders of this great city - some of its architects, its artisans, its builders and defenders." (Telegram, June 1, 1954)

(continued)

United States Department of the Interior
National Park ServiceNational Register of Historic Places
Continuation SheetHope Cemetery
Worcester (Worcester Co),
MassachusettsSection number 8 Page 4

One of the important civic leaders buried in Hope Cemetery is Loring Coes (Photo #11, Site Plan #27), inventor of the Knife Handle Wrench, who established Loring Coes & Co., the well-known manufacturer of machine knives. He was a representative to the General Court in 1885-6 and served on both the Common Council and Board of Aldermen.

The famous partners of Norcross Brothers, Contractors and Builders of Worcester (est. 1864), James Atkinson Norcross (1831-1903) and younger brother Orlando Whitney Norcross (1839-1920), are buried in Hope Cemetery mausoleums (Photo #6, 8; Site Plan #13, 14). Acclaimed by architect H. H. Richardson, for whom they built Trinity Church (1873) in Boston, as one of the country's best masonry load bearing builders, the brothers worked for Richardson until his death in 1886. The Norcross Brothers' other clients included the most prestigious architectural firms in the United States, among them Shepley, Rutan and Coolidge, McKim, Mead and White, and Peabody and Stearns (architects for the Worcester City Hall). James O'Gorman states that "without question it (the firm) was among the most important construction companies in the country in the late nineteenth and early twentieth century." (James O'Gorman, "O. W. Norcross, Richardson's 'Master Builder,'" Journal of the Society of Architectural Historians, May 1973, p. 105) The Norcross Brothers' first large contract was the Leicester Congregational Church in 1866. In Worcester they built the First Universalist Church (1871), the Worcester Art Museum (1896), Worcester City Hall (1898) and numerous other structures. In 1920, a commemorative bronze plaque, designed by Worcester sculptor Andrew O'Connor, was placed in the center of the third floor of Worcester City Hall, identifying Orlando W. Norcross as MASTER BUILDER. The two well-known local father and son sculptors, Andrew O'Connor, Sr. and Andrew O'Connor, Jr. are also buried in Hope Cemetery.

An Italian marble obelisk near the main entrance of the Cemetery, executed by Tateum & Horgan, honors Captain Peter Slater (1760 - 1831, Site Plan #33), and the other participants in the Boston Tea Party of December 16, 1773. The dedication of the Slater obelisk took place on July 4, 1870 and the reporting of the event covered more than half the front page of the Worcester Daily Spy. (July 6, 1870, p. 1) Nathan L. Revere

(continued)

**United States Department of the Interior
National Park Service****National Register of Historic Places
Continuation Sheet****Hope Cemetery
Worcester (Worcester Co),
Massachusetts**Section number 8 Page 5

(d. 1907), great grandson of Paul Revere, is also buried at Hope Cemetery as is John B. Gough, orator and philanthropist. Two other nationally known figures interred in the cemetery are Abby Kelly Foster, the 19th century women's rights advocate and Robert Goddard, recognized as the father of the American space program.

Many of Worcester's business and industrial leaders are buried at Hope Cemetery. Here lie Horace Bigelow, the developer of Lake Quinsigamond, James Wesson (Photo #7, Site Plan #20) and Iver Johnson (Site Plan #35), gun and pistol manufacturers, and Matthew J. Whittall (d. 1922, Site Plan #40), a well-known Worcester carpet manufacturer, owner of the Whittall Mills. Albert Curtis, for whom a main avenue in the Cemetery is named, succeeded Loring Coes on Hope Cemetery's Board of Commissioners in 1855 and serving until his death in 1898. He donated the Curtis Chapel, no longer extant.

Two Congressional Medal of Honor Winners are buried in Hope Cemetery: Thomas Plunkett (d. 1885) and Charles J. Pinkham (d. 1920).

Hope Cemetery is important as a fine example of a New England "rural" or "garden" cemetery. The movement away from crowded church yards and city cemetery lots to pastoral burial places began in Cambridge, Massachusetts with the founding of Mt. Auburn Cemetery in 1831. Twenty-three years later, Hope Cemetery was established, its founders making a conscious decision to create a rural cemetery: "In the opinion of competent judges, this lot is admirably adapted to the purpose for which it is designed. It is neither too remote from, nor too near to, the city. Its surface is variegated with hills and valleys. It is elevated above the New Worcester stream, which sweeps it upon the north. It is susceptible of a high degree of embellishment." (City of Worcester, Annual Report, 1851. City Doc. No. 6, p. 24)

The Hope Cemetery Commissioners' Reports, included in the City of Worcester's Annual Reports, beginning with 1854, report the commissioners activities and concerns regarding the constant enlargement, enhancement and maintenance of the "Garden of Graves." The laying out of avenues with tree names, the purchase of ornamental trees,

(continued)

United States Department of the Interior
National Park ServiceNational Register of Historic Places
Continuation SheetHope Cemetery
Worcester (Worcester Co),
MassachusettsSection number 8 Page 6

[and] grass seeds all insured that the city would be proud of this "hallowed spot...the cherished resort of the bereaved." (Annual Report, 1857, City Doc. No. 12, p. 63)

Architecturally, Hope Cemetery is significant for the numerous extant mausoleums representing the major revival styles in American memorial art: the Classic, the Egyptian, the Gothic, and the Renaissance with many of them sited in an enclave of these grand sepulchral edifices in Section 12. These distinctive structures of the recent past, which reflect American funerary architectural history, are admired, protected, appreciated and respected, for today due to lack of space and funding and changing taste and mores, they are rarely being built, being replaced by "community mausolea and columbaria." (Kenneth T. Jackson and Camilo Jose Vergara, Silent Cities, p. 112) The legacy of these structures to Hope Cemetery is to create an outdoor museum within an arboreal setting. The mausoleums are visible reminders of a time when Americans consciously in both public and private memorials recreated a historic past to commemorate their dead.

Hope Cemetery is worthy of listing on the National Register for its association with the development of the City of Worcester, the beauty of its picturesque "rural cemetery" design, the architectural integrity of its mausoleums, its oasis of peaceful green space close to the heavily industrialized city and its grand vistas out to the College of Holy Cross and the steep hills of Worcester.

Archaeological Significance

Since patterns of prehistoric occupation in Worcester are poorly documented, any surviving sites could be significant. Prehistoric sites in this area can contain information which would be useful in investigating such topics as Native American settlement and subsistence along the interior Blackstone River drainage, the relationship and importance between Native settlement along the Blackstone River and its tributaries, the relationships between lakeside and riverine settlement and the relationship between interior upland and coastal settlement. Prehistoric sites in this area can contribute to a greater understanding of the importance of the Worcester Plateau/Central Massachusetts uplands as a local and regional Native American settlement area and physiological zone when compared to other areas of the state including the Connecticut River Valley, Berkshire Uplands and Coastal Lowlands.

(continued)

**United States Department of the Interior
National Park Service****National Register of Historic Places
Continuation Sheet**Hope Cemetery
Worcester (Worcester Co),
MassachusettsSection number 8 Page 7

Historic Archaeological resources described above have the potential to further document 19th century and possibly 18th century land use in the Cemetery area. Further documentary research combined with archaeological survey and excavation can help document the mortuary practices associated with the Nash and Gates burials, both of which predate the founding of the Hope Cemetery in 1854. These graves may represent individual family plots or may have represented the start of some community or neighborhood based cemetery practice. In the event farmsteads are associated with these burials, archaeological resources may be present which can contribute information on the social, cultural and economic characteristics associated with 19th and possibly 18th century agricultural settlement in Worcester County. Structural remains of buildings no longer extant but associated with the Hope Cemetery can also be important by contributing information which helps reconstruct earlier components of the cemetery as well as it's mortuary practices and maintenance activities. Archaeological survivals of the Curtis Chapel and 1854/1872 receiving tombs can contribute information on funerary services at the cemetery and the treatment of bodies prior to burial. Structural remains and occupational related features associated with the Superintendents House can provide information relating to the conditions of life for cemetery workers and their families. Archaeological resources associated with the barn may contain information relating to general maintenance activities at the cemetery as well as 19th century transportation technologies associated with maintenance and funerary practices. Human remains can also contribute important information towards the significance of this nomination. Unmarked burials can contain information relating to the funerary treatment of deceased paupers and unknown persons. Human remains associated with burials moved from other cemeteries to the Hope Cemetery can contribute information on the extent to which the entire burial or portion thereof which was moved and the extent to which burials were mixed or reburied in multiple burials. Artifacts associated with individual graves can also yield important information by indicating differential or similar treatment of burials possibly based on ethnic or social status and the duration of that treatment.

(end)

United States Department of the Interior
National Park Service

**National Register of Historic Places
Continuation Sheet**

Hope Cemetery
Worcester (Worcester Co),
Massachusetts

Section number 8 Page 8

8. ARCHITECT/BUILDER (continued)

Barker & Nourse

Hewett, Arthur (sculptor)

Kenneth, W.D.

Novelli, J. (sculptor)

O'Connor, Andrew (sculptor)

O'Connor, Andrew, Jr. (sculptor)

Saville, Bruce Wilder (sculptor)

Valentine, Gill (surveyor)

(end)

United States Department of the Interior
National Park Service

National Register of Historic Places
Continuation Sheet

Hope Cemetery
Worcester (Worcester Co),
Massachusetts

Section number 9 Page 1

9. BIBLIOGRAPHICAL REFERENCES

BOOKS

Allen, Florence T., comp. "Old Cemeteries of Worcester, Massachusetts." 1952-1954. Located at the American Antiquarian Museum, Worcester.

Carrott, Richard G. The Egyptian Revival: Its Sources, Monuments and Meaning, 1808-1858. Berkeley: University of California Press, 1978.

Description de l'Egypte: Publiée par les ordres de Napoléon Bonaparte., reprint ed., 1802. Köln: Benedikt Taschen Verlag GmbH, 1994.

Encyclopaedia Britannica, Vol. 11, 15. Chicago: Encyclopaedia Britannica Inc. , 1951.

Jackson, Kenneth T. and Camilo José Vergara. Silent Cities. New York: Princeton Architectural Press, 1989.

Kimball, Fiske and George Harold Edgell. A History of Architecture. New York and London: Harper & Bros., 1918.

Kingsley, Elbridge and Frederick Knab. Picturesque Worcester: Part I - City and Environments. Springfield: W. F. Adams Co., 1895.

Larousse Encyclopedia of Prehistoric and Ancient Art. René Huyghe, ed. New York: Prometheus Press, 1962.

Lincoln, William. History of Worcester, Massachusetts From its Earliest Settlement to September 1836. Worcester: Charles Hersey, 1862.

Linden-Ward, Blanche. Silent City on a Hill: Landscapes of Memory and Boston's Mount Auburn Cemetery. Columbus: Ohio State University Press, 1989.

McDowell, Peggy and Richard E. Meyer. The Revival Styles in American Memorial Art. Bowling Green, Ohio: Bowling Green State University Popular Press, 1994.

Nutt, Charles. History of Worcester and its People. Vol. I, III. New York: Lewis Historical Publishing Co., 1919.

Rice, Franklin P., ed. The Worcester of Eighteen Hundred and Ninety-Eight: Fifty Years a City. Worcester: F. S. Blanchard & Co., 1899.

(continued)

United States Department of the Interior
National Park Service

National Register of Historic Places
Continuation Sheet

Hope Cemetery
Worcester (Worcester Co),
Massachusetts

Section number 9 Page 2

Sloane, David Charles. The Last Great Necessity: Cemeteries in American History. Baltimore and London: The John Hopkins University Press, 1991.

Soderman, Doris Flodin. The Sculptors O'Connor. Worcester MA: Gundi Publishers, 1995.

Tishler, William H. (ed.). American Landscape Architecture: Designs and Places. Washington, D.C: The Preservation Press, 1989.

A Tribute to the Columbian Year by the City of Worcester. Worcester: Pub. for the Board of Trade, F. S. Blanchard & Co., 1893.

World Architecture. Trewin Copplestone, ed. H.R. Hitchcock, introduction. Feltham, Middlesex, Great Britain: Hamlyn Pub. Group, Ltd., 1970.

PERIODICALS

Clendaniel, William C. "Rural Cemeteries: Guardians of our Nation's Heritage." Cemetery Management, Vol. 55, No. 1, January 1955.

Forbes, Henriette M. "Symbolic Cemetery Gates in New England." (1933), reprinted in Markers VII: Journal of the Association for Gravestones Studies, 1990.

O'Gorman, James F. "O. W. Norcross, Richardson's 'Master Builder': A Preliminary Report." Journal of the Society of Architectural Historians, May 1973. Vol. XXXII, No. 2.

Shepard, Elizabeth A. "Grave Issues: Restoring Boston's Historic Burying Grounds." CRM: Cultural Resource Management, Vol. 19, No. 7, 1996, p. 7-10.

Telegram (Worcester). June 1, 1954. "Hope Cemetery's 100th Year is noted at Ceremonies."

Telegram & Gazette (Worcester) . Feb. 21,1992. "A grave concern for Hope 'Friends'."

Sunday Telegram (Worcester), Section Five. September 25, 1938. "Recent Work Places Hope Cemetery Among New England's Finest."

Worcester Daily Spy. Vol. 25, No. 154. July 6, 1870.

Worcester Magazine. May 1903, p. 164.

(continued)

United States Department of the Interior
National Park Service

National Register of Historic Places
Continuation Sheet

Hope Cemetery
Worcester (Worcester Co),
Massachusetts

Section number 9 Page 3

PUBLIC DOCUMENTS

Commonwealth Government Documents

Local Government Documents

"Artworks in Our Park." Text Pamela E. Beall. Photographs by Don Eaton. City of Worcester, Parks and Recreation Department, 1986.

City of Worcester, Annual Reports (1848-1932). These include the Commissioners of Hope Cemetery Reports.

City of Worcester, Assessors Records.

City of Worcester, Hope Cemetery photographs, records, references materials and archival documents.

City of Worcester, "Hope Cemetery at Worcester Massachusetts. Rules and Regulations adopted by the Board of Commissioners of Hope Cemetery May 1, 1937."

OTHER SOURCES

Cheever, Herbert M. "Records of the Graves in Hope Cemetery in 1950." George Sessions & Co. Records. Worcester Historical Museum.

Floyd, Margaret Henderson. New England Chapter, Society of Architectural Historians: Tour of Worcester, March 27, 1976. Biographical material and building list of Stephen C. Earle.

"Illustrations of a few Buildings erected from the Designs by Barker & Nourse, Architects, Worcester, Mass." April 1898.

Leach, Warren P. "Hope Cemetery: Horticultural Survey and Tree Inventory." January 1996.

"Private Memorials." Pub. by John J. Kittredge Monumental Works, Worcester MA. Vol III, May 1927, No. 6.

Wall, Caleb. "The Historic Boston Tea Party of December 16, 1773." F. S. Blanchard & Co., 1896.

Worcester Historical Museum Library documents.

Worcester Public Library, Worcester Room documents.

(end)

Hope Cemetery
Name of Property

Worcester, Massachusetts
County and State

10. Geographical Data

Acreege of Property ca. 170 acres

UTM References See continuation sheet.

(Place additional UTM references on a continuation sheet)

1. 19	266300	4680060	3. 19	266880	4679590
Zone	Easting	Northing	Zone	Easting	Northing
2. 19	266920	4679880	4. 19	267000	4679340
Zone	Easting	Northing	Zone	Easting	Northing

X See continuation sheet

Verbal Boundary Description

(Describe the boundaries of the property on a continuation sheet.)

Boundary Justification

(Explain why the boundaries were selected on a continuation sheet.)

11. Form Prepared By

name/title Minxie Fannin and Monique Lehner, Preservation Consultant, with Betsy Friedberg, MHC, National Register Director

organization Massachusetts Historical Commission date September 1997

street & number 220 Morrissey Boulevard telephone 617-727-8470

city or town Boston state MA zip code 02125

Additional Documentation

Submit the following items with the completed form:

Continuation Sheets

Maps

A **USGS map** (7.5 or 15 minute series) indicating the property's location.

A **sketch map** for historic districts and properties having large acreage or numerous resources.

Photographs

Representative **black and white photographs** of the property.

Additional items (Check with the SHPO or FPO for any additional items)

Property Owner

(Complete this item at the request of the SHPO or FPO.)

name City of Worcester

street & number 455 Main Street telephone _____

city or town Worcester state MA zip code 01608

Paperwork Reduction Act Statement: This information is being collected for applications to the National Register of Historic Places to nominate properties for listing or determine eligibility for listing, to list properties, and to amend existing listings. Response to this request is required to obtain a benefit in accordance with the National Historic Preservation Act, as amended (16 U.S.C. 470 et seq.).

Estimated Burden Statement: Public reporting burden for this form is estimated to average 18.1 hours per response including the time for reviewing instructions, gathering and maintaining data, and completing and reviewing the form. Direct comments regarding this burden estimate or any aspect of this form to the Chief, Administrative Services Division, National Park Service, P.O. Box 37127, Washington, DC 20013-7127; and the Office of Management and Budget, Paperwork Reductions Project (1024-0018), Washington, DC 20503.

**Hope Cemetery
Worcester (Worcester Co.), MA**

DATA SHEET

<u>Number</u>	<u>Historic Name</u>	<u>Type</u>	<u>Material</u>	<u>Resource</u>	<u>Date</u>	<u>Status</u>
1	HOPE CEMETERY	LANDSCAPE PLAN	N/A	SITE	1854	C
2	CEMETERY OFFICE	BUILDING	WOOD/BRICK	BUILDING	1882/1889/ 1930	C
3	BARN/GARAGE	BUILDING	WOOD	BUILDING	1889	C
4	ALDRICH	MAUSOLEUM	GRANITE/ BRONZE DOORS	BUILDING	1917	C
5	BIGELOW & STEVENS	MAUSOLEUM	GRANITE/BRONZE DOOR	BUILDING	1915	C
6	A. COTSIDAS	MAUSOLEUM	GRANITE/BRONZE DOOR	BUILDING	ca. 1960	NC**
7	HANFF	MAUSOLEUM	GRANITE/BRONZE DOOR	BUILDING	1903	C
8	H. F. HARRIS	MAUSOLEUM	GRANITE/BRONZE DOOR	BUILDING	1915	C
9	HOUGHTON	MAUSOLEUM	GRANITE/BRONZE DOOR	BUILDING	1901	C
10	H.H.KING-HARDING	MAUSOLEUM	GRANITE/BRONZE DOOR	BUILDING	1898	C
11	MARCY	MAUSOLEUM	GRANITE/MARBLE DOOR/ BRONZE GATES	BUILDING	1901	C

**Hope Cemetery
Worcester (Worcester Co.), MA**

DATA SHEET

<u>Number</u>	<u>Historic Name</u>	<u>Type</u>	<u>Material</u>	<u>Resource</u>	<u>Date</u>	<u>Status</u>
12	ALBERT A. MORTON	MAUSOLEUM	GRANITE/BRONZE DOORS	BUILDING	1917	C
13	JAMES A. NORCROSS	MAUSOLEUM	GRANITE/SERPENTINE MARBLE COLUMNS	BUILDING	1905	C
14	ORLANDO W. NORCROSS	MAUSOLEUM	GRANITE	BUILDING	1909	C
15	THOMAS PRINCE	MAUSOLEUM	GRANITE/BRONZE DOORS	BUILDING	1910	C
16	SANDERSON	MAUSOLEUM	GRANITE/BRONZE DOORS	BUILDING	1953	NC**
17	HENRY E. SHAW	MAUSOLEUM	GRANITE/BRONZE DOORS	BUILDING	1920	C
18	TONNA	MAUSOLEUM	GRANITE/BRONZE DOORS	BUILDING	ca. 1959	NC**
19	J.K. WARREN	MAUSOLEUM	GRANITE/BRONZE DOORS	BUILDING	1924	C
20	JAMES EDWIN WESSON	MAUSOLEUM	GRANITE/BRONZE DOORS	BUILDING	1910	C
21	FENCE	FENCE	GRANITE/IRON	STRUCTURE	1869	C
22	WPA ENCLOSING WALL	WALL	GRANITE	STRUCTURE	1936	C
23	SOLOMON NIXON GATES	ENTRY	GRANITE/BROWNSTONE/IRON	STRUCTURE	1917	C

**Hope Cemetery
Worcester (Worcester Co.), MA**

DATA SHEET

<u>Number</u>	<u>Historic Name</u>	<u>Type</u>	<u>Material</u>	<u>Resource</u>	<u>Date</u>	<u>Status</u>
24	WPA GATES	ENTRY	GRANITE	STRUCTURE	1936	C
25	CITY OF WORCESTER	RECEIVING TOMB	GRANITE	STRUCTURE	1887	C
26	CIRCULATION SYSTEM	ROADWAY	N/A	STRUCTURE	1854	C
27	LORING COES PLOT	FENCE/STATUE/ MONUMENTS	MARBLE/GRANITE/ IRON	STRUCTURE/ OBJECT	1874, 1906	C
28	CANADIAN MEMORIAL	CROSS	GRANITE	OBJECT	1931	C
29	G.A.R. MEMORIAL	CANNONS (3) AND BALLS	BRONZE	OBJECT	1892	C
30	FIREMAN'S MEMORIAL	STATUE	GRANITE	OBJECT	1896	C
31	'HOPE'	STATUE	WHITE BRONZE	OBJECT	1909	C
32	'MEMORY'	STATUE	WHITE BRONZE	OBJECT	ca. 1915	C
33	CAPT. PETER SLATER	OBELISK	MARBLE/GRANITE BASE	OBJECT	1870	C
34	LEWIS HOUGHTON	MONUMENT	GRANITE	OBJECT	1913	C
35	IVER JOHNSON	MONUMENT	GRANITE	OBJECT	ca. 1895	C

Hope Cemetery
Worcester (Worcester Co.), MA

DATA SHEET

<u>Number</u>	<u>Historic Name</u>	<u>Type</u>	<u>Material</u>	<u>Resource</u>	<u>Date</u>	<u>Status</u>
36	ODD FELLOWS	GRANITE SPHERE	GRANITE	OBJECT	1898	C
37	ODD FELLOWS	GRANITE SPHERE	GRANITE	OBJECT	1929	C
38	PFAFFMAN	MONUMENT	GRANITE/BRONZE	OBJECT	1936	C
39	WM. A. RICHARDSON	MONUMENT	GRANITE TEMPLE WITH RELIEF CHERUB	OBJECT	1898	C
40	WHITTALL	MONUMENT	GRANITE	OBJECT	1922	C
41	TREE CHAMPION BEECHES	TREE (3)	N/A	OBJECT	19 th Century	

Hope Cemetery
Worcester (Worcester Co.), MA

DATA SHEET

<u>Number</u>	<u>Historic Name</u>	<u>Type</u>	<u>Material</u>	<u>Resource</u>	<u>Date</u>	<u>Status</u>
36	ODD FELLOWS	GRANITE SPHERE	GRANITE	OBJECT	1898	C
37	ODD FELLOWS	GRANITE SPHERE	GRANITE	OBJECT	1929	C
38	PFAFFMAN	MONUMENT	GRANITE/BRONZE	OBJECT	1936	C
39	WM. A. RICHARDSON	MONUMENT	GRANITE TEMPLE WITH RELIEF CHERUB	OBJECT	1898	C
40	WHITTALL	MONUMENT	GRANITE	OBJECT	1922	C
	TREE CHAMPION BEECHES	TREE (3)	N/A	OBJECT	19 th Century	

Hope Cemetery
Worcester (Worcester Co.), MA

DATA SHEET

TOTAL RESOURCES: 37 Contributing, 3 Non-Contributing

16 Contributing Buildings	3 Noncontributing Buildings
1 Contributing Site	
7 Contributing Structures	
13 Contributing Objects	

KEY

C: Contributing Resources
NC: Non-Contributing Resources
NC**: Non-Contributing Resources but will probably be contributing in the future

Note: With an estimated 50,000-65,000 gravestones and markers in Hope Cemetery, it is impossible to identify all resources. Therefore the District Data Sheet only provides a representative sample of the resources to be found in the Cemetery.

CITY OF WORCESTER

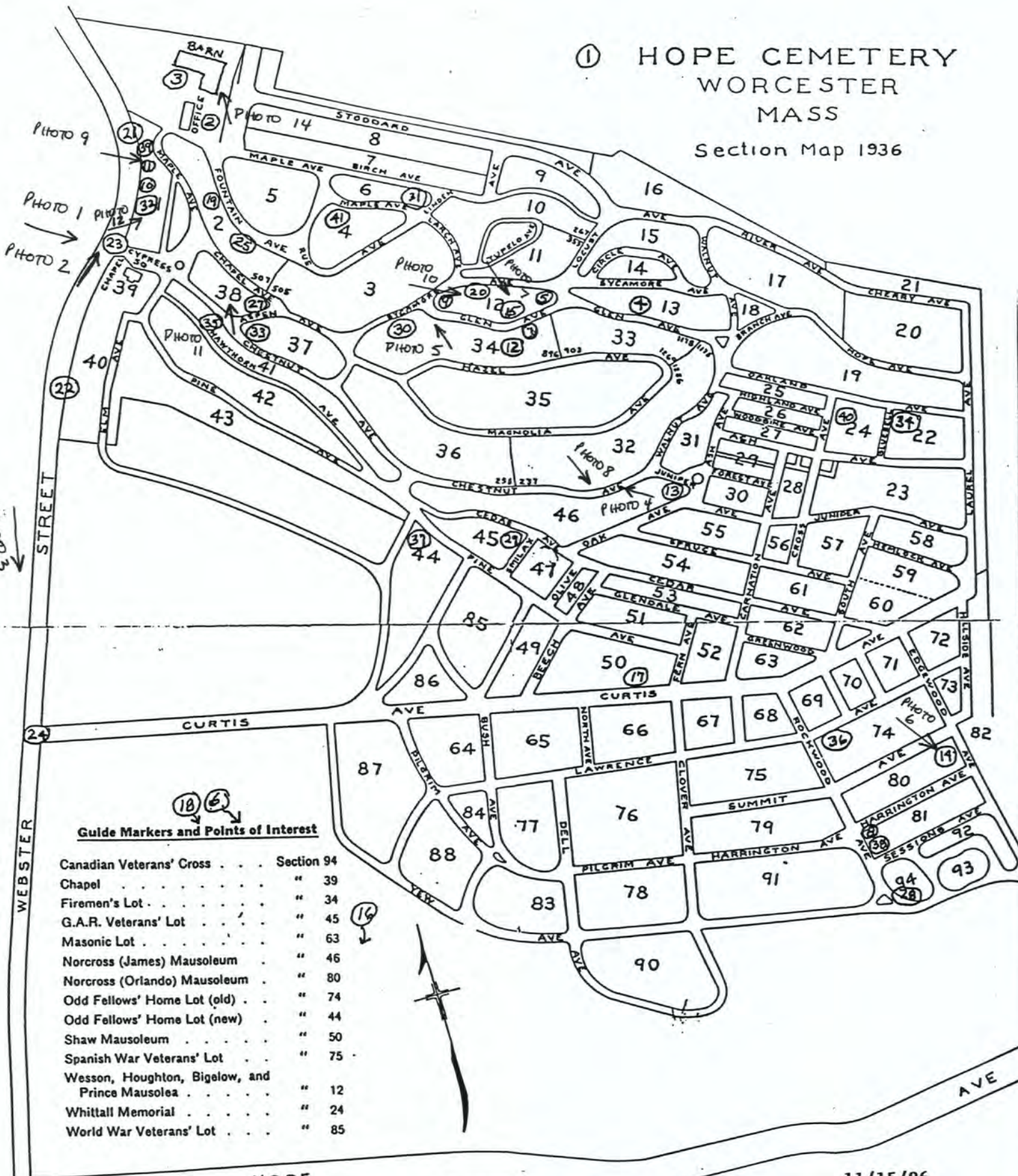
HOPE CEMETERY - SECTION MAP

MAP DATED 1936, UPDATED 1987

ANNOTATED BY FANNIN/LEHNER 1997



① HOPE CEMETERY
 WORCESTER
 MASS
 Section Map 1936



Guide Markers and Points of Interest

Canadian Veterans' Cross	Section 94
Chapel	" 39
Firemen's Lot	" 34
G.A.R. Veterans' Lot	" 45
Masonic Lot	" 63
Norcross (James) Mausoleum	" 46
Norcross (Orlando) Mausoleum	" 80
Odd Fellows' Home Lot (old)	" 74
Odd Fellows' Home Lot (new)	" 44
Shaw Mausoleum	" 50
Spanish War Veterans' Lot	" 75
Wesson, Houghton, Bigelow, and Prince Mausolea	" 12
Whittall Memorial	" 24
World War Veterans' Lot	" 85

HOPE

11/15/96

SITE PLAN SHOWING FEATURES LISTED IN THE DISTRICT DATA SHEET

UNITED STATES DEPARTMENT OF THE INTERIOR
NATIONAL PARK SERVICE

NATIONAL REGISTER OF HISTORIC PLACES
EVALUATION/RETURN SHEET

REQUESTED ACTION: NOMINATION

PROPERTY Hope Cemetery
NAME:

MULTIPLE
NAME:

STATE & COUNTY: MASSACHUSETTS, Worcester

DATE RECEIVED: 11/21/97 DATE OF PENDING LIST: 12/02/97
DATE OF 16TH DAY: 12/18/97 DATE OF 45TH DAY: 1/05/98
DATE OF WEEKLY LIST:

REFERENCE NUMBER: 97001560

NOMINATOR: STATE

REASONS FOR REVIEW:

APPEAL: N DATA PROBLEM: N LANDSCAPE: N LESS THAN 50 YEARS: N
OTHER: N PDIL: N PERIOD: N PROGRAM UNAPPROVED: N
REQUEST: N SAMPLE: N SLR DRAFT: N NATIONAL: N

COMMENT WAIVER: N

ACCEPT RETURN REJECT 12/22/97 DATE

ABSTRACT/SUMMARY COMMENTS:

Entered in the
National Register

RECOM./CRITERIA _____

REVIEWER _____ DISCIPLINE _____

TELEPHONE _____ DATE _____

DOCUMENTATION see attached comments Y/N see attached SLR Y/N



1. Hope Cemetery
119 Webster Street, Worcester
2. Worcester County, MA
3. Monique B. Lehner
4. August 1996
5. Negatives with photographer
72 South Pleasant Street
Hingham, MA
6. Wrought iron Solomon Nixon Gates
(1917, Conserved 1995) located on
Webster Street between Sections 1
and 39. Gates are flanked by granite
arches trimmed with brownstone.
Looking east.
7. #1



1. Hope Cemetery
119 Webster Street, Worcester
2. Worcester County, MA
3. Monique B. Lehner
4. August 1996
5. Negatives with photographer
72 South Pleasant Street
Hingham, MA
6. Original (1869) Gothic Style granite posts with incised trefoils and wrought iron fence along Webster Street from northwest corner of the cemetery to Nixon Gates. Looking north.
7. # 2



1. Hope Cemetery
119 Webster Street, Worcester
2. Worcester County, MA
3. Monique B. Lehner
4. August 1996
5. Negative with photographer
72 South Pleasant Street
Hingham, MA
6. WPA - built (1936) granite wall with granite posts capped with low pitched pyramidal tops. Wall runs along Webster Street from Nixon Gates to 500 feet west of intersection of Webster Street and Hope Avenue. Looking southwest
7. #3



1. Hope Cemetery
119 Webster Street, Worcester
2. Worcester County, MA
3. Monique B. Lehner
4. May 1995
5. Negative with photographer
72 South Pleasant Street
Hingham, MA
6. Vista along Cemetery's Chestnut Avenue
and up the rise toward Magnolia Avenue.
Photo taken from the Samuel H. Taylor (d. 1907)
monument, Section 46. Looking northwest

7 # 4



1. Hope Cemetery
119 Webster Street, Worcester
2. Worcester County, MA
3. Monique B. Lehner
4. May 1995
5. Negative with photographer
72 South Pleasant Street
Hingham, MA
6. Vista focusing on the tree champion
European Beech, Section 4. Looking
northwest from Firemen's Statue,
Section 34.
7. #5



1. Hope Cemetery
119 Webster Street, Worcester
2. Worcester County, MA
3. Monique B. Lehner
4. May 1995
5. Negative with photographer
72 South Pleasant Street
Hingham, MA
6. Orlando W. Norcross Doric style mausoleum
(1909), Section 80, north facade and west
elevation. Sited at the crest of a hill, the
mausoleum commands a vista of curving
roads and undulating terrain. Looking southeast.
7. #6



JAMES EDWIN W.

NOV 24 1911
MAY 10 1912
PREP. CO.

1. Hope Cemetery
119 Webster Street, Worcester
2. Worcester County, MA
3. Monique B. Lehner
4. May 1995
5. Negative with photographer
72 South Pleasant Street
Hingham, MA
6. James Edwin Wesson (Egyptian Revival)
(1910), Section 12, north facade and
west elevation. Looking southeast.
7. #7



JAMES A. NORCROSS

1. Hope Cemetery
119 Webster Street, Worcester
2. Worcester County, MA
3. Monique B. Lehner
4. August 1996
5. Negative with photographer
72 South Pleasant Street
Hingham, MA
6. James A. Norcross domed Renaissance
Revival Mausoleum (1905), Section 46,
north facade and west elevation. Looking
southeast.
7. #8



1. Hope Cemetery
119 Webster Street, Worcester
2. Worcester County, MA
3. Monique B. Lehner
4. May 1995
5. Negative with photographer
72 South Pleasant Street
Bellingham, MA
6. Marcy Classical Revival Mausoleum
(1901, Barker & Nourse), Section 1, west
facade and south elevation. Looking east.
7. #9



HOUGHTON

1. Hope Cemetery
119 Webster Street, Worcester
2. Worcester County, MA
3. Monique B. Lehner
4. May 1995
5. Negative with photographer
72 South Pleasant Street
Hingham, MA
6. Houghton Gothic Revival Mausoleum (1901),
Section 12, west facade and south elevation.
Looking east.
7. #10



ASPEN

1874 No. 4663

1. Hope Cemetery
119 Webster Street, Worcester
2. Worcester County, MA
3. Monique B. Lehner
4. May 1995
5. Negative with photographer
72 South Pleasant Street
Hingham, MA
6. Coes Family Plot (1874), bounded by granite base, wrought and cast iron fence, sited on a rising slope, Section 38. Looking northwest.

7. # 11



KATE
MILES
PARLIN
1866-1916

PARLIN PARLIN

1. Hope Cemetery
119 Webster Street, Worcester
2. Worcester County, MA
3. Monique B. Lehner
4. May 1995
5. Negative with photographer
72 South Pleasant Street
Hingham, MA
6. White bronze Parlin Monument "Memory,"
(1915-1916), atop a classically detailed base,
sited in prominent Section 1. Statue faces
northwest. Looking northeast.
7. #12



PFAFFMANN

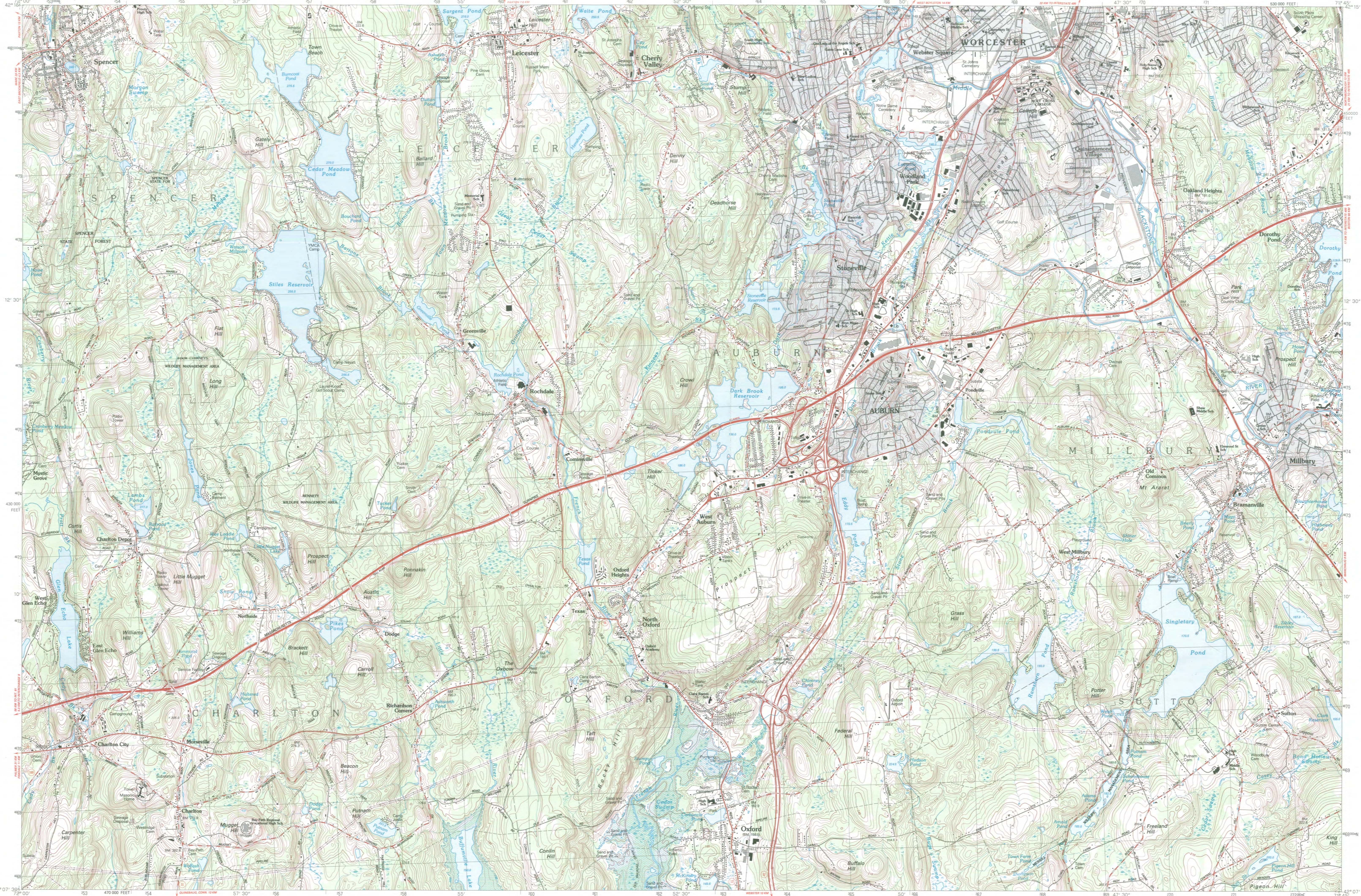
PHILIP MARTIN
PFAFFMANN
1855-1936
HELEN BUTLER
HIS WIFE
1865-1927
ETHEL MAY
THEIR DAUGHTER
1885-1963

MAUDE PFAFFMANN
THEIR DAUGHTER
1889-1960
GLADYS E. TRIFT
THEIR DAUGHTER
1896-1947
PHILIP PFAFFMANN
THEIR SON
1913-

1. Hope Cemetery
119 Webster Street, Worcester
2. Worcester County, MA
3. Monique B. Lehner
4. May 1995
5. Negative with photographer
72 South Pleasant Street
Hingham, MA
6. Pfaffman Monument (1927-1936, W. D. Kenneth,
architect and J. Novelli, sculptor.) The monument
and exedra face west. Looking east.
7. #13

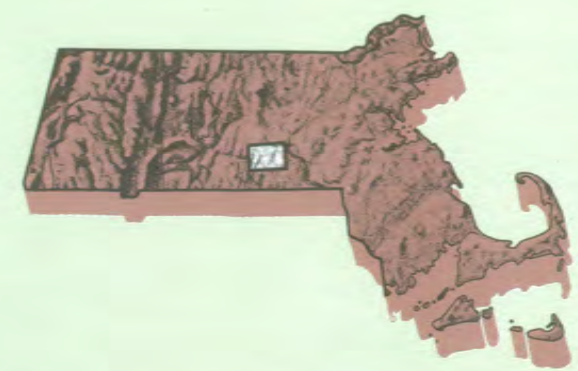


1. Hope Cemetery
119 Webster Street, Worcester
2. Worcester County, MA
3. Monique B. Lehner
4. May 1995
5. negative with photographer
72 South Pleasant Street
Hingham, MA
6. Early Stick to Style Cemetery barn/garage
(1889), northwest corner of the cemetery,
south facade and east elevation. Looking
north.
7. #14



Worcester South MASSACHUSETTS

1:25 000-scale metric topographic map



7.5 X 15 MINUTE QUADRANGLE SHOWING

- Contours and elevations in meters
- Highways, roads and other manmade structures
- Water features
- Woodland areas
- Geographic names



Prepared by the United States Geological Survey in cooperation with Massachusetts Department of Public Works
 Control by USGS, NOS/NOAA, and Massachusetts Geodetic Survey
 Compiled by photogrammetric methods from aerial photographs taken 1960. Field checked 1982. Map edited 1983
 Supersedes Leicester and Worcester South 1:25,000-scale maps dated 1969 and 1973

Projection and 1000-meter grid, zone 19: Universal Transverse Mercator
 10,000-foot grid ticks based on Massachusetts coordinate system, mainland zone. 1927 North American Datum
 To place on the predicted North American Datum 1983 move the projection lines 6 meters south and 40 meters west as shown by dashed corner ticks
 There may be private inholdings within the boundaries of the National or State reservations shown on this map
 NATIONAL GEODETIC VERTICAL DATUM OF 1929
 CONTROL ELEVATIONS SHOWN TO THE NEAREST 0.1 METER
 OTHER ELEVATIONS SHOWN TO THE NEAREST 0.3 METER

SKU# TMA304 BIN#
 Descr. USGS WORCESTER SOUTH
 Price \$ 4.00
 MP

CONVERSION TABLE		DECLINATION DIAGRAM		ADJOINING MAPS		
Meters	Feet	1° 15' 15" 190° 34' MILES		1	2	3
1	3.2808			4	5	
2	6.5617			6	7	8
3	9.8425					
4	13.1234					
5	16.4042					
6	19.6850					
7	22.9659					
8	26.2467					
9	29.5275					
10	32.8084					

To convert meters to feet multiply by 3.2808
 To convert feet to meters multiply by 0.3048

UTM grid convergence (CM) and magnetic declination (MM) at center of map
 Diagram is approximate

1	2	3	4	5	6	7	8
1 North Brookfield	2 Worcester North	3 Worcester	4 Worcester South	5 Millis	6 Southbridge	7 Uxbridge	8 Uxbridge

FOR SALE BY U.S. GEOLOGICAL SURVEY
 DENVER, COLORADO 80225, OR RESTON, VIRGINIA 22092

Topographic Map Symbols

- Primary highway, hard surface
- Secondary highway, hard surface
- Light-duty road, hard or improved surface
- Unimproved road, trail
- Route marker: Interstate, U. S., State
- Railroad: standard gage; narrow gage
- Bridge, drawbridge
- Footbridge, covered; underpass
- Built-up area: only selected landmark buildings shown
- Houses: barn; church; school; large structure
- Boundary: National with monument; State; County, parish; Civil township, precinct, district; Incorporated city, village, town; National or State reservation; small park; Land grant with monument; found section corner; U. S. public lands survey; range, township; section
- Fence or field line
- Power transmission line, located tower
- Dam; dam with lock
- Cemetery; grave
- Campground; picnic area; U. S. location monument
- Windmill; water well; spring
- Mine shaft; prospect; adit or cave
- Control: horizontal station; vertical station; spot elevation
- Contour: index; intermediate; supplementary; depression
- Distorted surface: strip mine, lava, sand
- Bathymetric contours: index, intermediate
- Perennial lake and stream; intermittent lake and stream
- Rapids, large and small; falls, large and small
- Submerged marsh; marsh, swamp
- Land subject to controlled inundation; woodland
- Sand; mangrove
- Orchard; vineyard



The Commonwealth of Massachusetts

William Francis Galvin, Secretary of the Commonwealth
Massachusetts Historical Commission

November 14, 1997

Ms. Carol Shull
National Register of Historic Places
Department of the Interior
National Park Service
P.O. Box 37127
Washington, DC 20013-7127

Dear Ms. Shull:

Enclosed please find the following nomination for:

Hope Cemetery, 119 Webster Street, Worcester (Worcester Co.), MA

The nomination has been voted eligible by the State Review Board and has been signed by the State Historic Preservation Officer. The owners of property in the Certified Local Government community of Worcester were notified of pending State Review Board consideration 60-120 days before the meeting.

Sincerely,

A handwritten signature in cursive script that reads "Betsy Friedberg".

Betsy Friedberg, National Register Director
Massachusetts Historical Commission

enclosure

cc: Ann C. Nelson, Friends of Hope Cemetery
City of Worcester, Department of Parks, Recreation, and Cemeteries
Christopher Grady, Worcester Historical Commission
Mayor Raymond V. Mariano, City of Worcester
Fannin & Lehner, Preservation Consultants
James Igoe, Preservation Worcester
Jody Kennedy, Office of Planning and Community Development