

1005
RECEIVED
JUN 01 1990

United States Department of the Interior
National Park Service

National Register of Historic Places
Registration Form

NATIONAL
REGISTER

This form is for use in nominating or requesting determinations of eligibility for individual properties or districts. See instructions in *Guidelines for Completing National Register Forms* (National Register Bulletin 16). Complete each item by marking "x" in the appropriate box or by entering the requested information. If an item does not apply to the property being documented, enter "N/A" for "not applicable." For functions, styles, materials, and areas of significance, enter only the categories and subcategories listed in the instructions. For additional space use continuation sheets (Form 10-900a). Type all entries.

1. Name of Property

historic name Lawrenceburg No. 2 Hydroelectric Station
other names/site number Shoal Creek No. 2

2. Location

street & number Mile 51.7 on Shoal Creek near old U.S. Hwy 43 N/A not for publication
city, town Lawrenceburg vicinity
state Tennessee code TN county Lawrence code 099 zip code 38464

3. Classification

Ownership of Property	Category of Property	Number of Resources within Property	
<input checked="" type="checkbox"/> private	<input type="checkbox"/> building(s)	Contributing	Noncontributing
<input type="checkbox"/> public-local	<input checked="" type="checkbox"/> district	<u>1</u>	<u>0</u> buildings
<input type="checkbox"/> public-State	<input type="checkbox"/> site	<u>1</u>	<u>0</u> sites
<input type="checkbox"/> public-Federal	<input type="checkbox"/> structure	<u>2</u>	<u>0</u> structures
	<input type="checkbox"/> object		<u>0</u> objects
			<u>0</u> Total

Name of related multiple property listing: Pre-TVA Hydroelectric Development in TN, 1901-1933
Number of contributing resources previously listed in the National Register 0

4. State/Federal Agency Certification

As the designated authority under the National Historic Preservation Act of 1966, as amended, I hereby certify that this nomination request for determination of eligibility meets the documentation standards for registering properties in the National Register of Historic Places and meets the procedural and professional requirements set forth in 36 CFR Part 60. In my opinion, the property meets does not meet the National Register criteria. See continuation sheet.
Herbert E. Senger Deputy State Historic Preservation Officer Date 5/22/90
Tennessee Historical Commission
State or Federal agency and bureau

In my opinion, the property meets does not meet the National Register criteria. See continuation sheet.
Signature of commenting or other official _____ Date _____
State or Federal agency and bureau _____

5. National Park Service Certification

I, hereby, certify that this property is:
 entered in the National Register. See continuation sheet. Entered in the National Register 5 July 1990
 determined eligible for the National Register. See continuation sheet.
 determined not eligible for the National Register.
 removed from the National Register.
 other, (explain:)
for Signature of the Keeper Date of Action

6. Function or Use

Historic Functions (enter categories from instructions)

INDUSTRY: energy facility

Current Functions (enter categories from instructions)

NOT IN USE

7. DescriptionArchitectural Classification
(enter categories from instructions)

N/A

Materials (enter categories from instructions)

foundation CONCRETE

walls BRICK

roof CONCRETE

other N/A

Describe present and historic physical appearance.

The Lawrenceburg, or Shoal Creek, No. 2 Hydroelectric Station is located in rural Lawrence County (population 34,110), near the county seat of Lawrenceburg. It is located about two and one-half miles southwest of Lawrenceburg, at Mile 51.7 on Shoal Creek. The site is reached by means of a secondary road off Old U.S. Highway 43, about one-half mile north of the UCAR Carbon Company plant.

By 1915, Lawrenceburg No. 1 (Shoal Creek No. 1 - NR pending) could no longer supply the needs of the city, and it was recognized that a second plant should be built approximately 1.8 miles downstream from the existing hydroelectric facility. Lawrenceburg No. 2, built in 1924 by the Nashville firm of Freeland, Roberts & Co. (see Appendices A-G), is in some ways a uniquely conceived structure. The concrete non-overflow section is fifty-four (54) feet long at Elevation 103.75, while it is 153 feet long at crest Elevation 101.75. The concrete ogee spillway measures fifty-eight feet in length at Elevation 100.0, and the concrete buttressed powerhouse is forty-two and one-half feet long. The fishladder measures eighteen feet at Elevation 105.0, while the non-overflow section at Elevation 102.0 is ten feet long. The concrete non-overflow section at Elevation 104.0 is forty feet long, while the earthen embankment at Elevation 110.0 is 100 feet long. In the dam-block adjacent to the spillway are two sluices, controlled by four steel headgates six feet high by two feet, eight inches wide.

The fishladder is a multi-chambered structure. Water passes through two rectangular orifices on the upstream face and then cascades down thirteen steps to the powerhouse tailwater. Flow through the ladder is presently blocked by a steel plate at the inlet to the first step. The dam straddling the creek has a one-hundred-foot-long earthen embankment with a crest width of twelve feet and side slopes of 1.5 horizontal to 1.0 vertical. The right end of the embankment ties to a concrete gravity retaining wall adjoining the concrete non-overflow section. This wall was repaired in 1960. Within the embankment is a narrow concrete core wall that extends to the rock. The crest of the embankment forms the access to the powerhouse which sits upon a series of seven reinforced concrete stilts of varying lengths which rest upon the trapezoidal spillway section on the southern side of the dam.

 See continuation sheet

United States Department of the Interior
National Park ServiceNational Register of Historic Places
Continuation SheetSection number 7 Page 2 Lawrenceburg No. 2 Hydroelectric Station

The powerhouse of Lawrenceburg No. 2 is of steel-reinforced concrete and brick, and is a single story reinforced concrete and brick building with floor elevation at 110. It is supported on reinforced concrete columns extending to the substructure buttresses. There are two intakes through the upstream face of the substructure that are controlled by concrete headgates. Along with its older sister, Lawrenceburg No. 1, Lawrenceburg No. 2 pre-TVA hydroelectric site operated as a municipal public utility until 1939 when the TVA began increasingly to provide electricity to the city. In the 1940s, Lawrenceburg No. 1 ceased operation and the second plant was abandoned a few years later.¹ Lawrenceburg No. 2 is today owned by Union Carbide, Inc.

¹ Small Hydro Feasibility Report for Shoal Creek No. 1 Dam, and; correspondence with Marymaud Killen-Carter, Lawrence County Historian, March 3, 1987, and; Viola H. Carpenter and Marymaud Killen-Carter, Our Hometown, Lawrenceburg: Crossroads of Dixie, (Lawrenceburg, Tenn.: Lino-Litho Printers, 1986), pp. 92-94, 180, 182, 183; while the authors place the date of construction at 1915 new evidence in the form of original drawings for the Shoal Creek No. 2 (Lawrenceburg No. 2) site from the firm of Freeland, Roberts, & Co. dated 1923, and a secondary report on file at the Union Carbide plant's maintenance office indicate that the date of construction was 1924. Additionally, although a thorough search of the Lawrenceburg Democrat-Union for the years 1922-1926 reveals nothing concerning the construction of the second site, by September 29, 1926, a special booster issue shows the second site already in existence.

8. Statement of Significance

Certifying official has considered the significance of this property in relation to other properties:

nationally statewide locally

Applicable National Register Criteria A B C D

Criteria Considerations (Exceptions) A B C D E F G N/A

Areas of Significance (enter categories from instructions)

COMMERCE

COMMUNITY PLANNING & DEVELOPMENT

ENGINEERING

Period of Significance

1924-1933

Significant Dates

1924

Cultural Affiliation

N/A

Significant Person

N/A

Architect/Builder

Freeland, Roberts & Co.

State significance of property, and justify criteria, criteria considerations, and areas and periods of significance noted above.

The Lawrenceburg No. 2 Hydroelectric Station is significant under criterion C because it represents the kind of local hydroelectric engineering projects typical of the kind being constructed on Tennessee's smaller rivers in the early twentieth century. Moreover, its engineering, by the Nashville firm of Freeland, Roberts and Co., is remarkable in that it is conceptually unique and also one of four extant hydroelectric sites designed by the firm for use on the smaller rivers of Middle Tennessee, namely the three sites on the Duck River in the 1920s, Lillard's Mill (NR pending), Columbia (NR 2/9/90), and the Shelbyville (NR 2/09/90) stations.

The site is also significant under criterion A in that it was a municipally-built, owned, and operated facility, and was important in the political and industrial development of this locality of the state's history. That is, it is closely associated with the so-called "Progressive Era" in Tennessee's and America's early-twentieth-century history. It was a time when citizens, reacting to a widely held distrust by the voting public concerning the destructive power of monopoly, frequently opted for the alternative of community rather than private ownership of public utilities.

The Lawrenceburg No. 2 Hydroelectric Station meets the registration requirements as set forth in the MPDF, "Pre-TVA Hydroelectric Development in Tennessee, 1901 - 1933." The site's integrity is visibly intact in the dam, fishladder, and powerhouse, all essential components necessary to convey the significance of the site. Although electrical transmission facilities have long since disappeared, their loss is not sufficient to decrease the historic integrity of the site.

See continuation sheet

9. Major Bibliographical References

Previous documentation on file (NPS): N/A

- preliminary determination of individual listing (36 CFR 67) has been requested
- previously listed in the National Register
- previously determined eligible by the National Register
- designated a National Historic Landmark
- recorded by Historic American Buildings Survey # _____
- recorded by Historic American Engineering Record # _____

See continuation sheet

Primary location of additional data:

- State historic preservation office
- Other State agency
- Federal agency
- Local government
- University
- Other

Specify repository: _____

10. Geographical Data

Acreeage of property approx. 2 acres

UTM References

A

1	6
---	---

4	6	6	9	6	0
---	---	---	---	---	---

3	8	9	6	7	8	0
---	---	---	---	---	---	---

 Zone Easting Northing

C

--	--

--	--	--	--	--	--

--	--	--	--	--	--	--

B

--	--

--	--	--	--	--	--

--	--	--	--	--	--	--

 Zone Easting Northing

D

--	--

--	--	--	--	--	--

--	--	--	--	--	--	--

See continuation sheet

Lawrenceburg, TN 52NE

Verbal Boundary Description

The boundaries of Lawrenceburg No. 2 pre-TVA hydroelectric site include the dam and powerhouse footprints. See accompanying maps and drawings.

See continuation sheet

Boundary Justification

The boundaries are sufficient to protect the historic integrity of the site.

See continuation sheet

11. Form Prepared By

name/title James B. Jones, Jr., Historic Preservation Specialist

organization Tennessee Historical Commission date May 1990

street & number 701 Broadway telephone (615) 742-6718

city or town Nashville state TN zip code 37243-0442

United States Department of the Interior
National Park Service

**National Register of Historic Places
Continuation Sheet**

Section number 9 Page 2 Lawrenceburg No. 2 Hydroelectric Station

MAJOR BIBLIOGRAPHICAL REFERENCES

Carpenter, Viola H. and Marymaud Killen-Carter. Our Hometown,
Lawrenceburg: Crossroads of Dixie. Lawrenceburg, Tenn.: Lino-Litho
Printers, 1986.

Correspondence with Marymaud Killen-Carter, Lawrence County Historian,
March 3, 1987, on file at the Tennessee State Historic Preservation
Office in Nashville.

Drawings for Shoal Creek No. 2 (Lawrenceburg No. 2) site from the firm of
Freeland, Roberts, & Co., dated 1923, on file at the offices of Hart,
Freeland Roberts, 2505 Hillsboro Road, Nashville, Tennessee, 38302.

Lawrenceburg Democrat-Union 1922-1926.

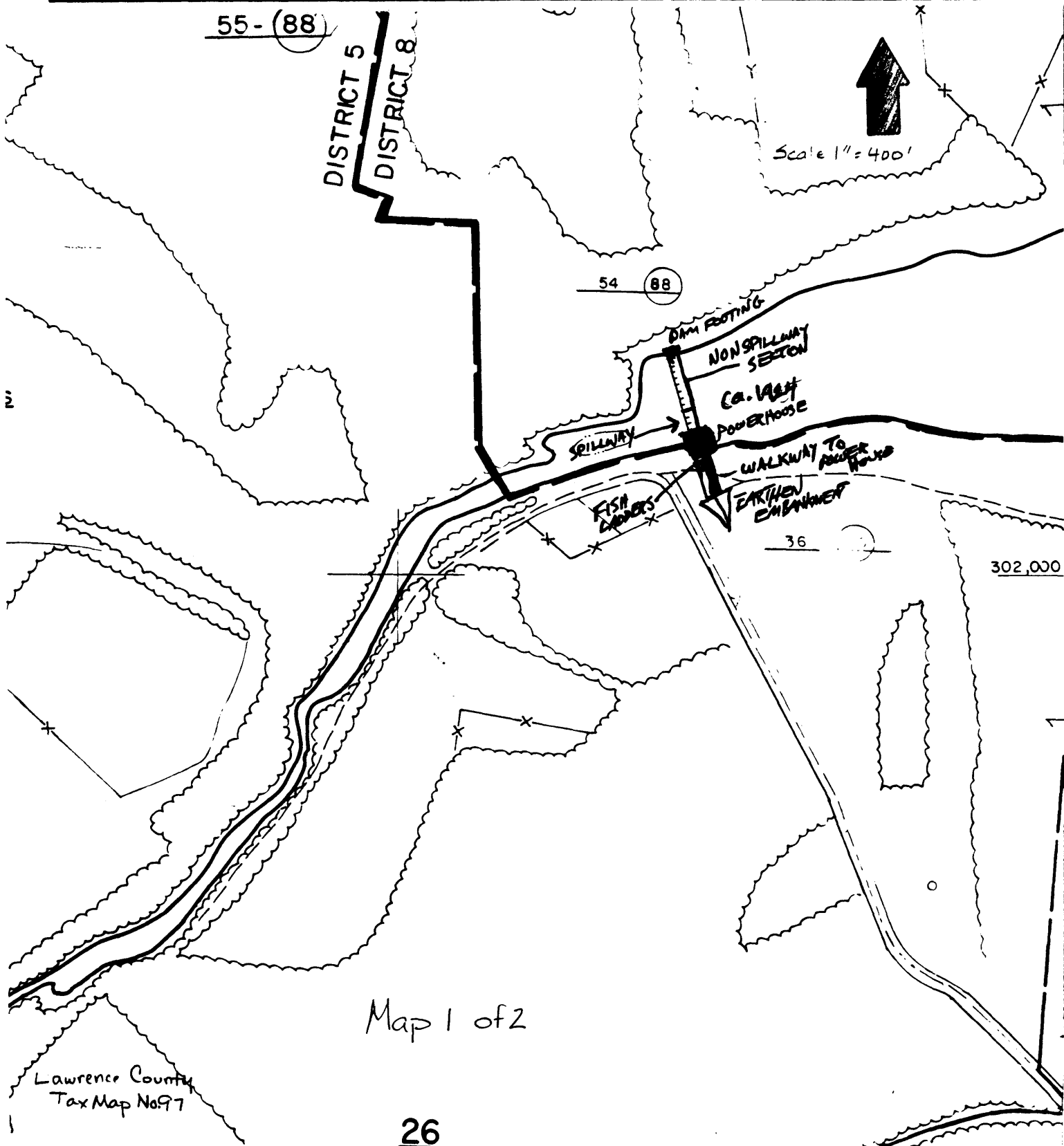
Tennessee Valley Authority. Small Hydro Program Reconnaissance Report for
Shoal Creek No. 1 Dam, TVA Report No. WR28-2-510-103, May 1980.

United States Department of the Interior
National Park Service

National Register of Historic Places Continuation Sheet

Section number 10 Page 2

Lawrenceburg No. 2 Hydroelectric Station



Map 1 of 2

Lawrence County
Tax Map No 97

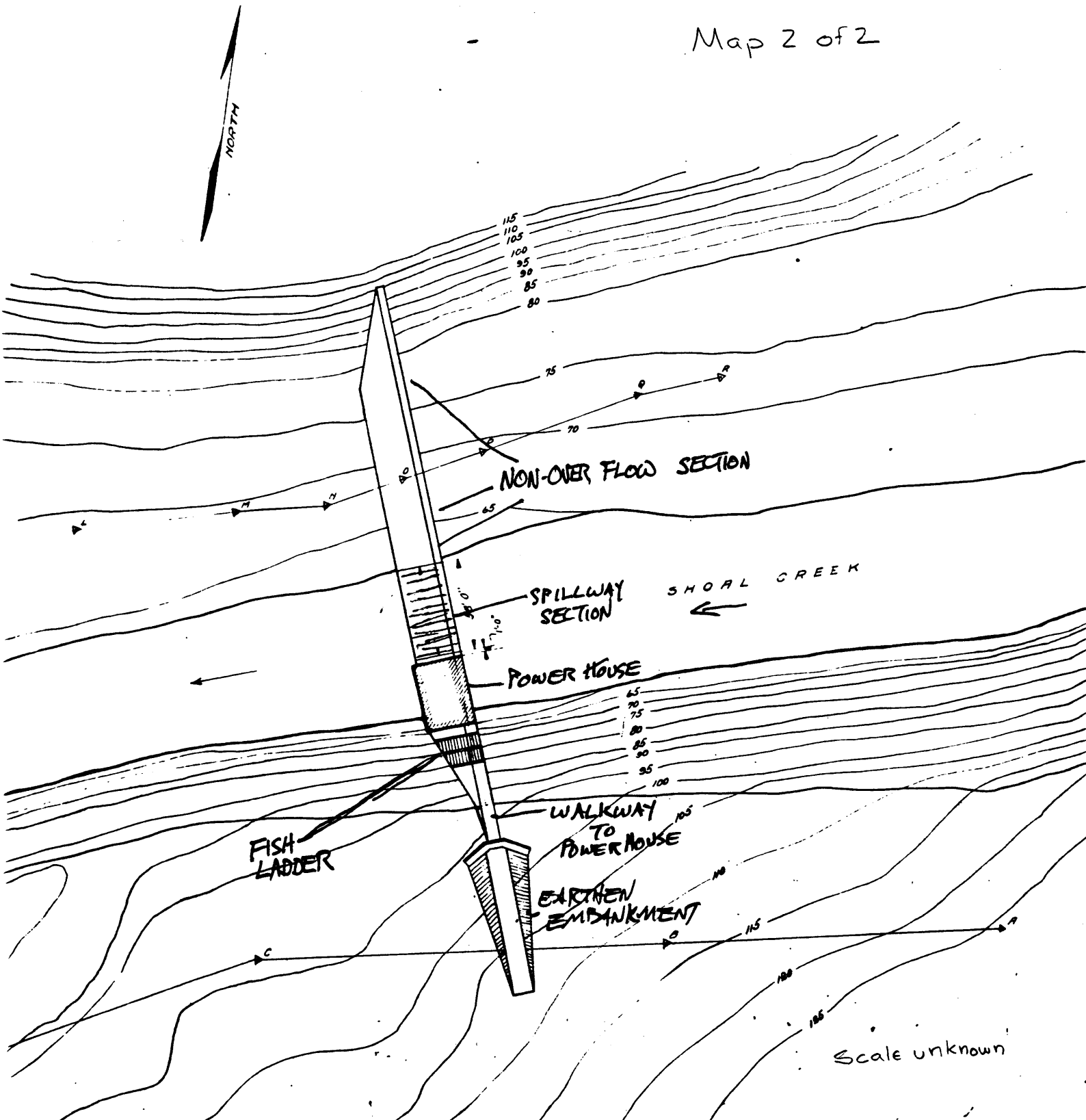
United States Department of the Interior
National Park Service

National Register of Historic Places
Continuation Sheet

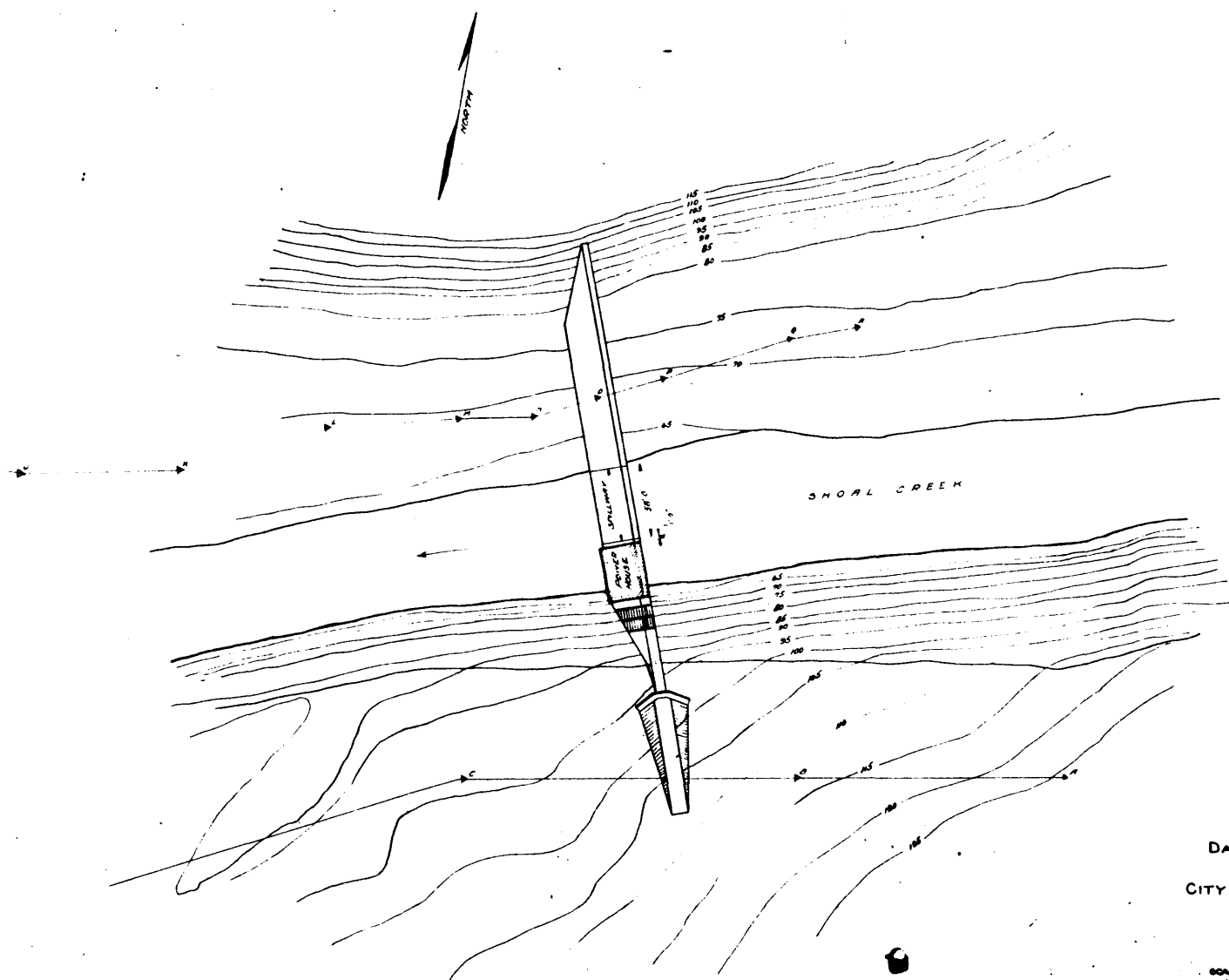
Section number 10 Page 3

Lawrenceburg No. 2 Hydroelectric Station

Map 2 of 2

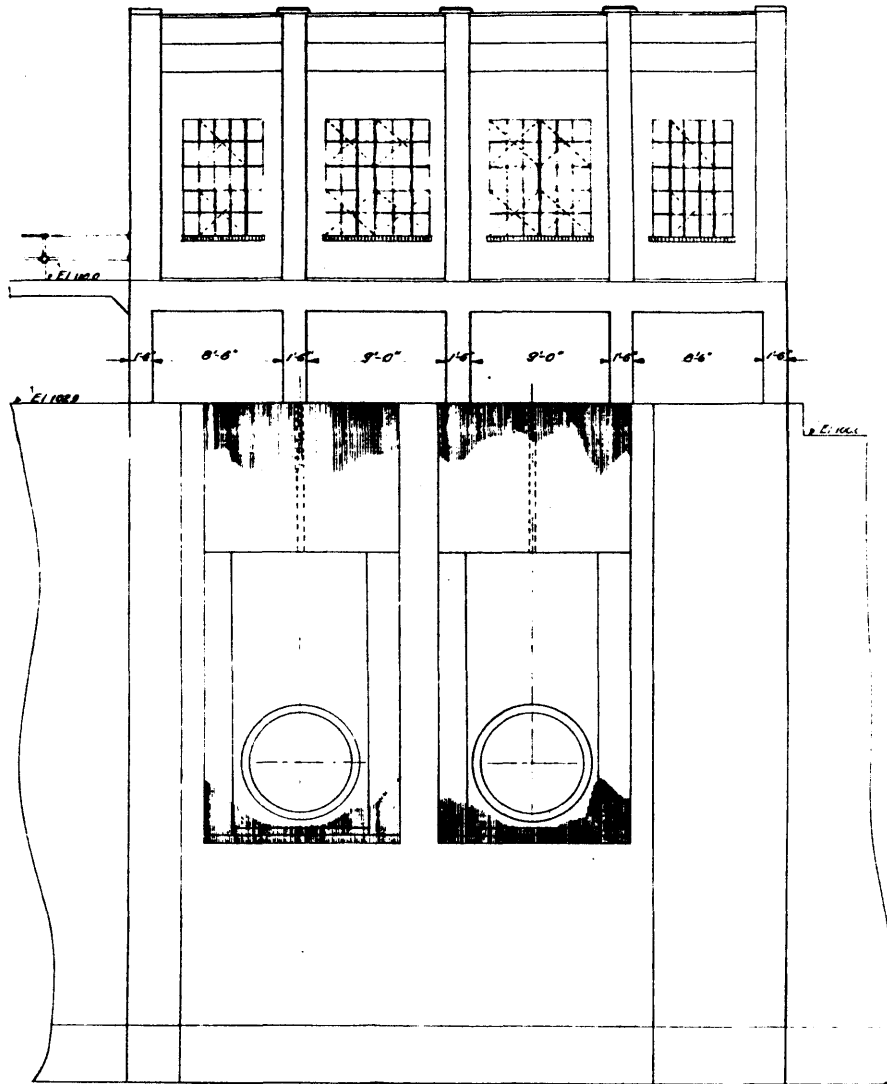


Scale unknown

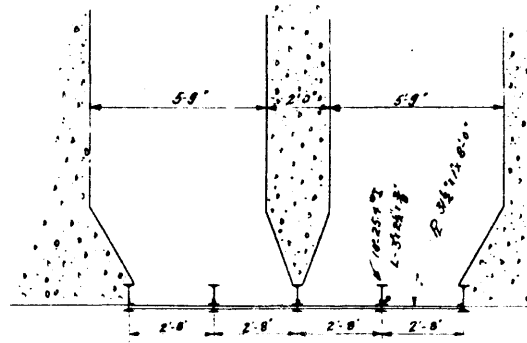


LOCATION MAP
 DAM AND POWER HOUSE
 FOR
 CITY OF LAWRENCEBURG, TENN.
 FREELAND, ROBERTS & Co.
 ENGINEERS
 NASHVILLE, TENN.
 SCALE 1" = 40' JUNE 15, 1925

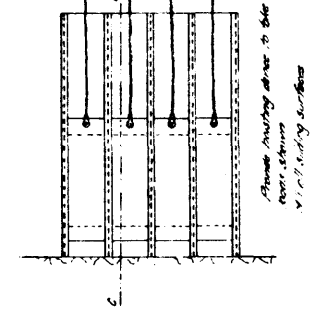
APPENDIX A
 Lawrenceburg No. 2 Hydroelectric
 Station
 Lawrenceburg, Lawrence Co., TN



UPSTREAM ELEVATION - POWER HOUSE
Scale 1/4" = 1'-0"

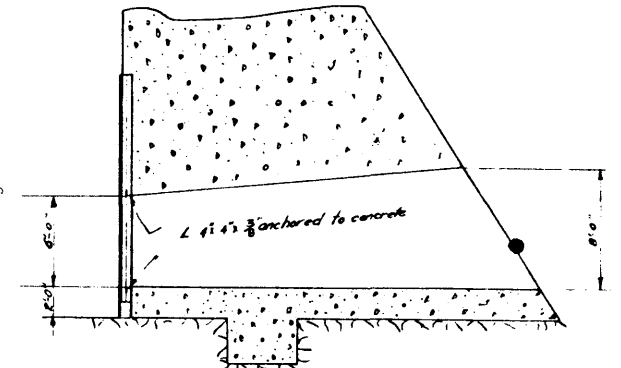


Plan of gates, Scale 1/4" = 1'-0"



UPSTREAM ELEVATION

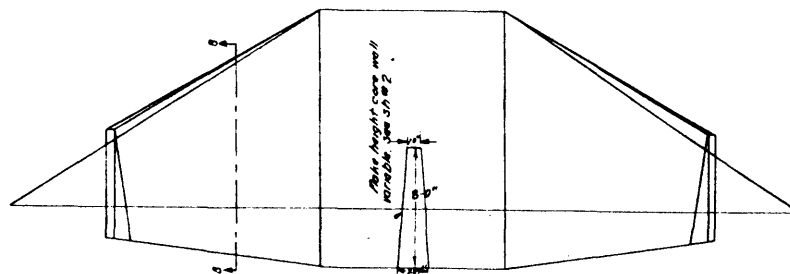
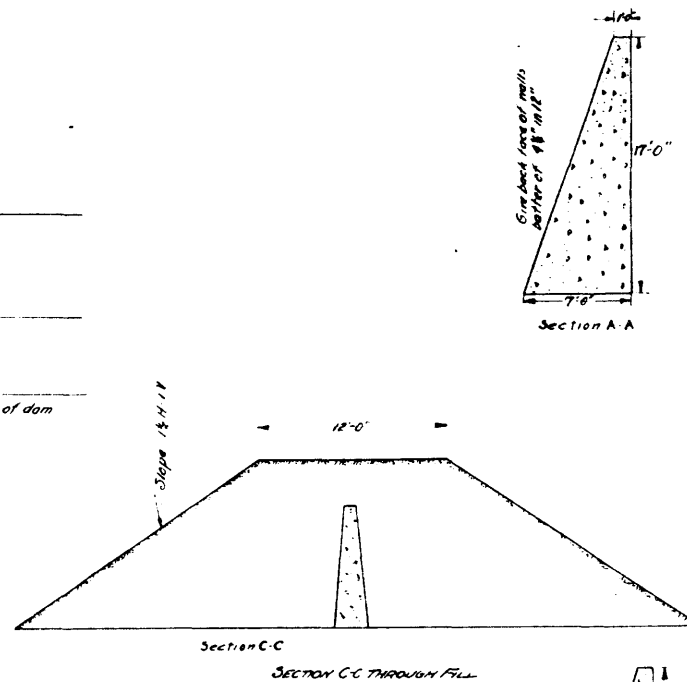
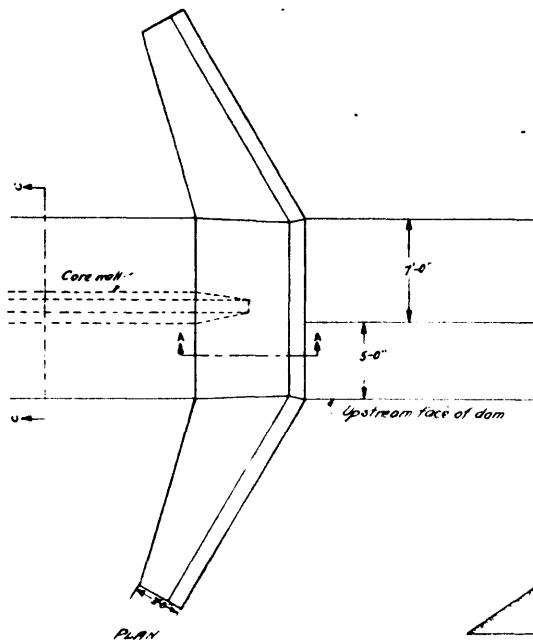
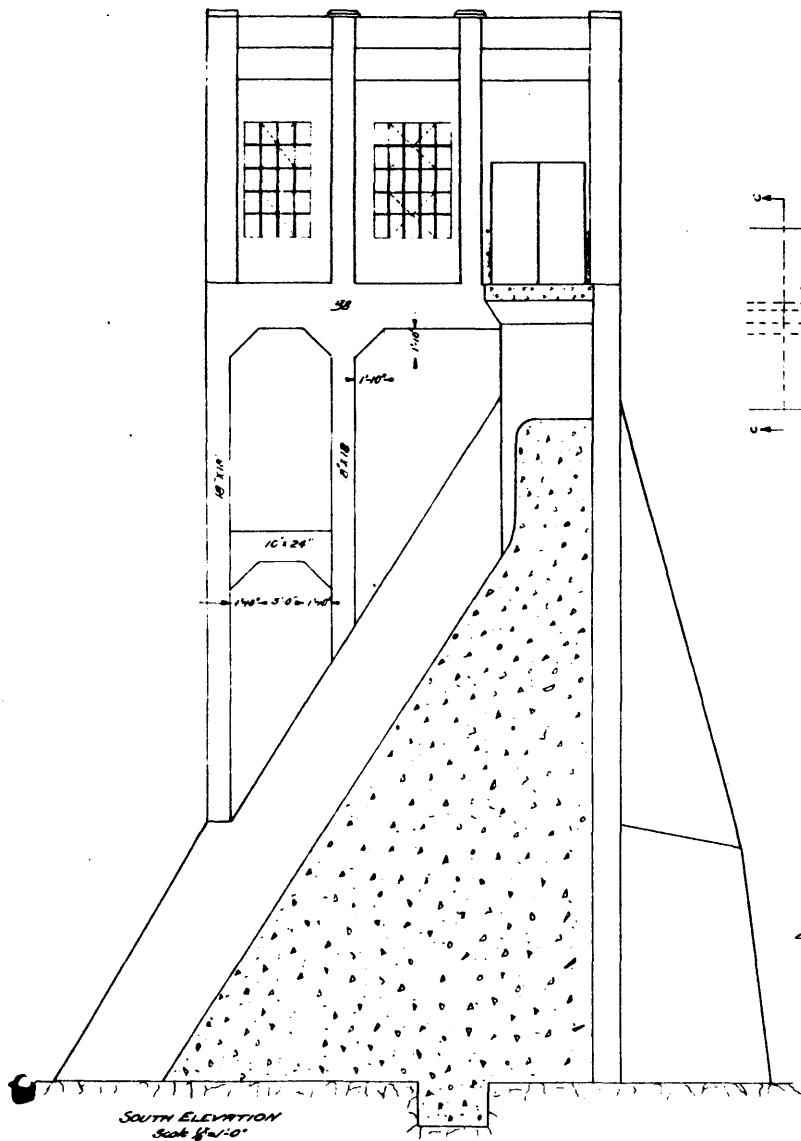
GATES IN DAM
Scale 1/4" = 1'-0"



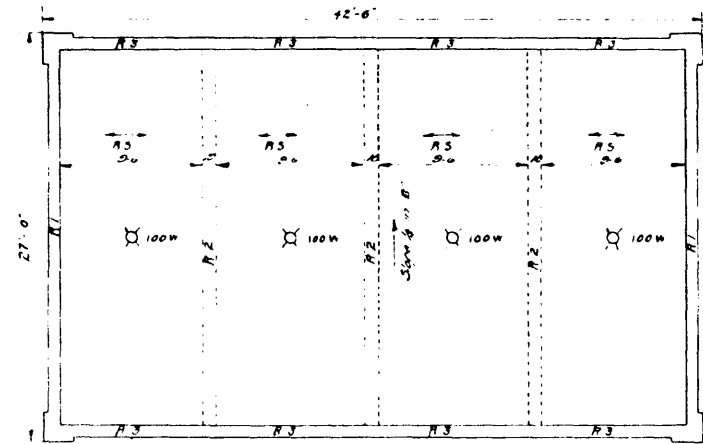
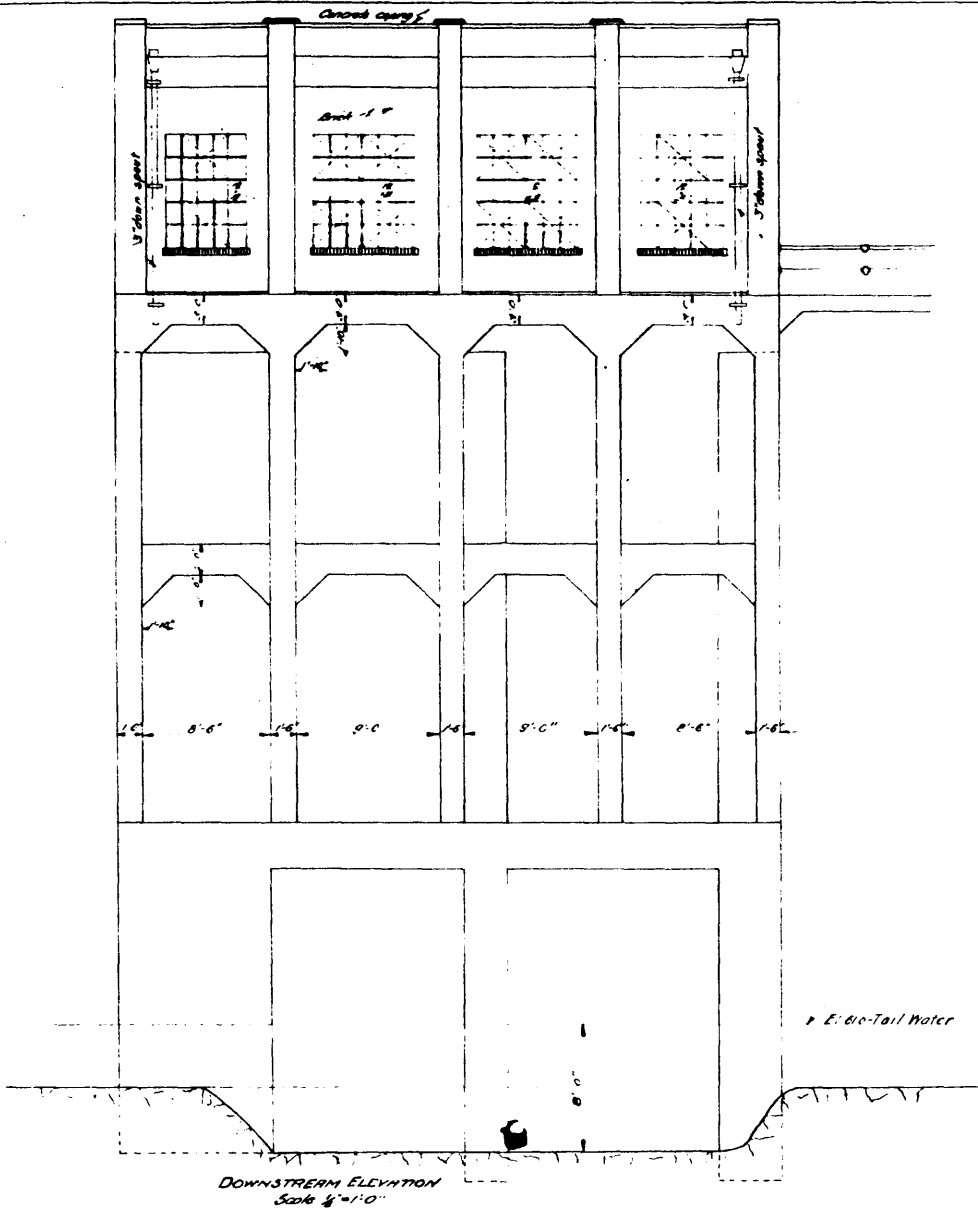
SECTION G-G

DAM AND POWER HOUSE
FOR
CITY OF LAWRENCEBURG, TENN.
FREELAND, ROBERTS & CO.
ENGINEERS
NASHVILLE, TENN.
SCALE: AS SHOWN AUG. 12, 1926

Lawrencburg No. 2 Hydroelectric Station
Lawrencburg, Lawrence Co., TN



DAM AND POWER HOUSE
FOR
CITY OF LAWRENCBURG, TENN.
FREELAND, ROBERTS & CO.
ENGINEERS
NASHVILLE, TENN.
SCALE: AS SHOWN AUG. 11, 1925



ROOF PLAN

Scale 1/4" = 1'-0"

DAM AND POWER HOUSE
FOR
CITY OF LAWRENCEBURG, TENN.

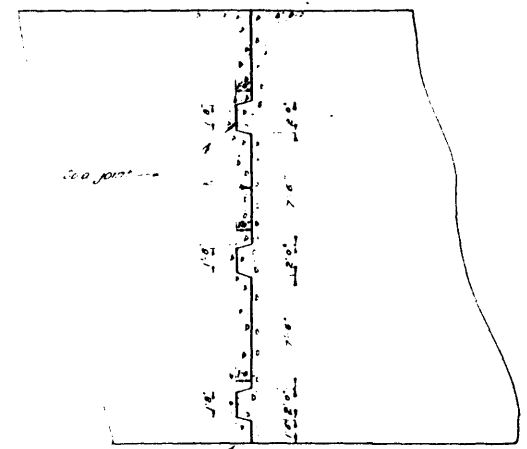
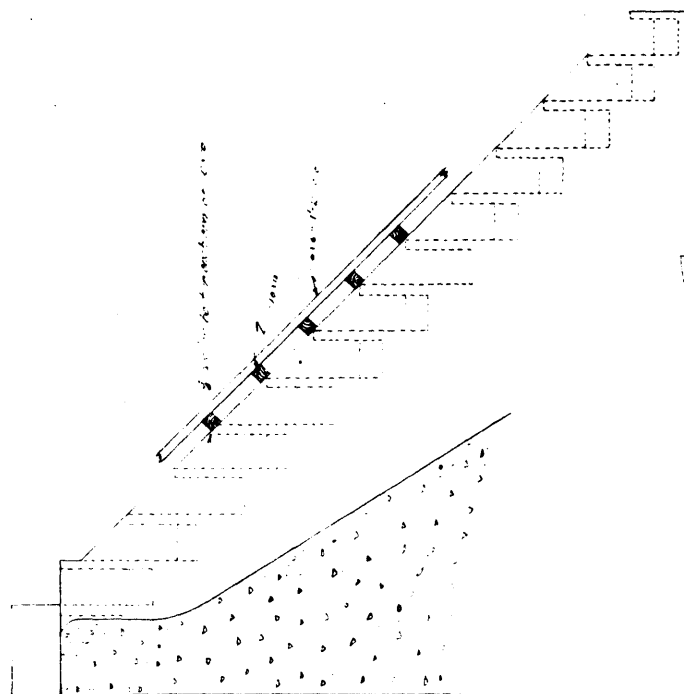
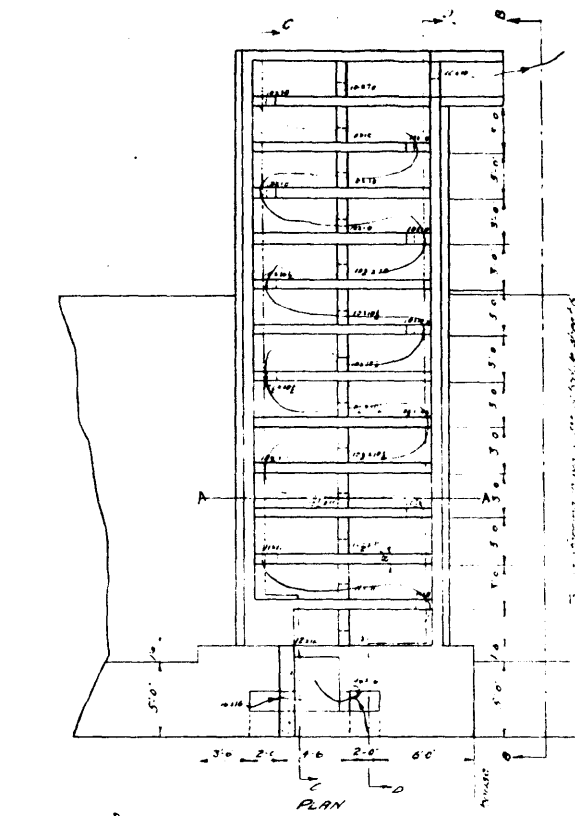
FREELAND, ROBERTS & CO
ENGINEERS
NASHVILLE, TENN.

SCALE: AS SHOWN

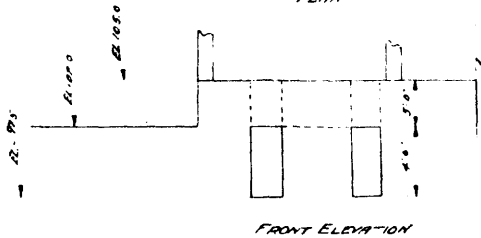
AUG. 8, 1928

7
REVISION 11/21/40

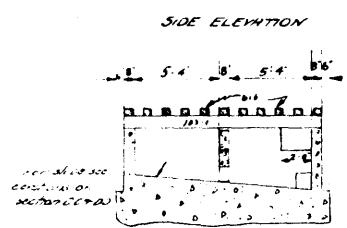
APPENDIX E
Lawrenceburg No. 2 Hydroelectric Station
Lawrenceburg, Lawrence Co., TN



Upstream face of dam
EXPANSION JOINT
 Spaces joints 30'-0" center-to-center
 Scale of 1" = 10'



FRONT ELEVATION



SECTION H-H

FISHWAY
 Scale of 1" = 10'

**DAM AND POWER HOUSE
 FOR
 CITY OF LAWRENCEBURG, TENN.**
 FREELAND, ROBERTS & CO.
 ENGINEERS
 NASHVILLE, TENN.
 SCALE: AS SHOWN AUG. 15, 1923



Historic View
Lawrenceburg No. 2 Hydroelectric Station
Lawrenceburg vicinity, Lawrence Co., TN

United States Department of the Interior
National Park Service

**National Register of Historic Places
Continuation Sheet**

Section number Photos Page 1 Lawrenceburg Hydroelectric Station

Lawrenceburg Hydroelectric Station
Lawrenceburg, Lawrence County, Tennessee
Photos by: James B. Jones, Jr.
Date: April 1989
Negs: Tennessee Historical Commission
Nashville, Tennessee

- #1 of 5 Looking northwest, view of dam showing overflow and non-overflow sections and portion of powerhouse.
- #2 of 5 Looking east, view of non-overflow and overflow section of dam and powerhouse.
- #3 of 5 Looking northwest, view of Powerhouse and unique support columns and fishladder.
- #4 of 5 Looking east, view of Powerhouse, fishladder, and overflow section of dam.
- #5 of 5 Looking southwest, upstream portion of facility showing powerhouse, powerhouse access ramp and portion of non-overflow section of dam.

HISTORIC VIEW

- #1 of 1 Historic View of Lawrenceburg No. 2 site in 1925, about a year after its completion. Looking northeast, upstream.