



The Ormonde
2046 - 2048 N.W. Flanders
Portland, Multnomah County, Oregon

Description: north elevation

Heritage INvestment Corporation
123 NW Second Avenue, Suite 200
Portland, Multnomah County, Oregon 97209

Dale Archer Photography 1986 photo

Photo 1 of 12



HERITAGE INVESTMENT CORPORATION
123 NW Second Avenue, Suite 200
Portland, OR 97209

— HOLDERS OF NEGATIVE

Property: Ormonde Apartments
2046-2048 NW Flanders Street
Portland, Multnomah County, Oregon

Description: Looking south at north elevations of (left to right)
Ormonde, Dayton and Day Apartments

Photograph by Dale Archer, 1987

2 OF 12



The Ormonde

2046 - 2048 N.W. Flanders

Portland, Multnomah County, Oregon

Description: West elevation, looking south

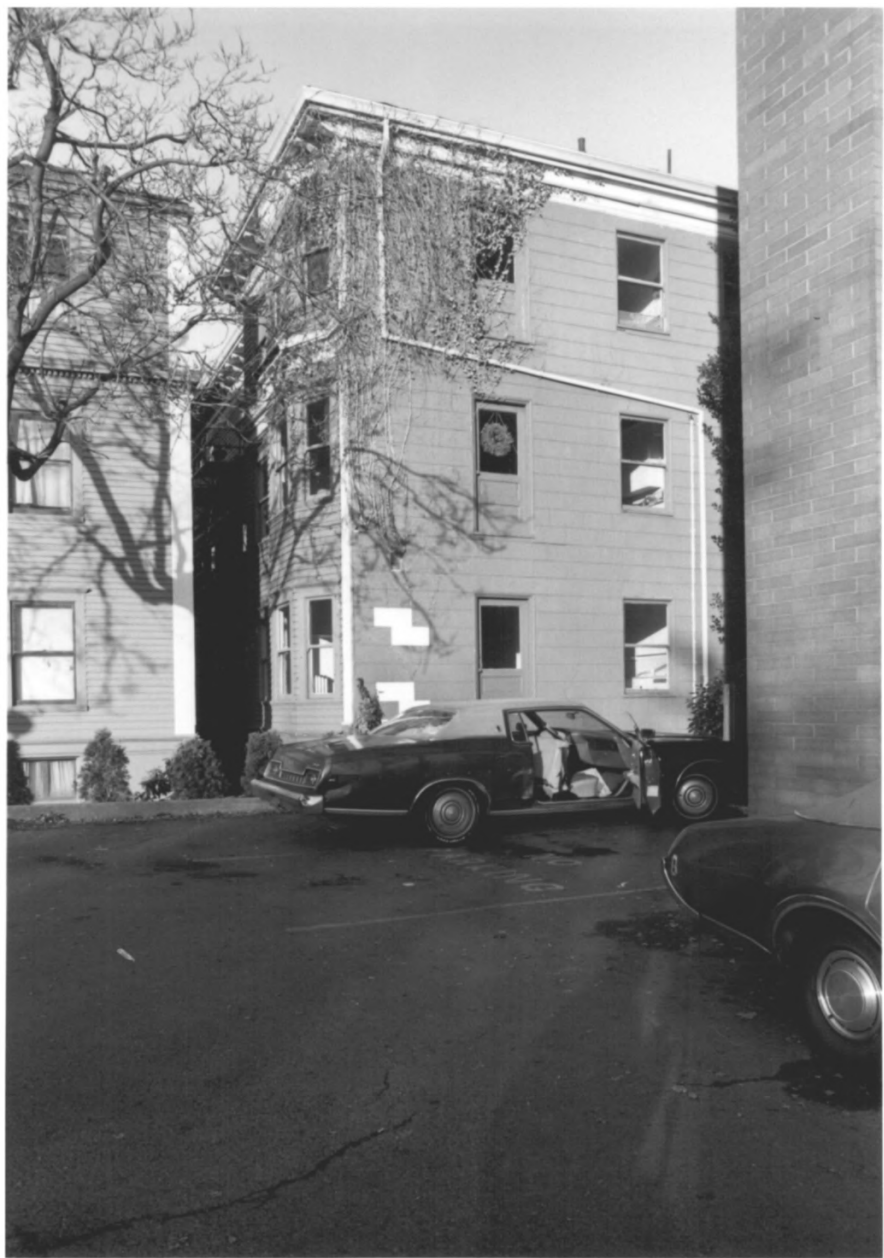
Heritage Investment Corporation

123 NW Second Avenue, Suite 200

Portland, Multnomah County, Oregon 97209

Dale Archer Photography 1986 photo

Photo 3 of 12



The Ormonde
2046 - 2048 N.W. Flanders
Portland, Multnomah County, Oregon

Description: Southwest corner

Heritage Investment Corporation
123 NW Second Avenue, Suite 200
Portland, Multnomah County, Oregon 97209

Dale Archer Photography 1986 photo

Photo 4 of 12



The Ormonde
2046 - 2048 N.W. Flanders
Portland, Multnomah County, Oregon

Description: Southeast corner

Heritage Investment Corporation
123 NW Second Avenue, Suite 200
Portland, Multnomah County, Oregon 97209

Dale Archer Photography 1986 photo

Photo 5 of 12



The Ormonde
2046 - 2048 N.W. Flanders
Portland, Multnomah County, Oregon

Description: East elevation, looking south

Heritage Investment Corporation
123 NW Second Avenue, Suite 200
Portland, Multnomah County, Oregon 97209

Dale Archer Photography 1986 photo

Photo 6 of 12



The Ormonde
2046 - 2048 N.W. Flanders
Portland, Multnomah County, Oregon

Description: North elevation detail

Heritage Investment Corporation
123 NW Second Avenue, Suite 200
Portland, Multnomah County, Oregon 97209

Dale Archer Photography 1986 photo

Photo 7 of 12



The Ormonde
2046 - 2048 N.W. Flanders
Portland, Multnomah County, Oregon

Description: North elevation detail

Heritage Investment Corporation
123 NW Second Avenue, Suite 200
Portland, Multnomah County, Oregon 97209

Dale Archer Photography 1986 photo

Photo 8 of 12



The Ormonde
2046 - 2048 N.W. Flanders
Portland, Multnomah County, Oregon

Description: North elevation detail

Heritage Investment Corporation
123 NW Second Avenue, Suite 200
Portland, Multnomah County, Oregon 97209

Dale Archer Photography 1986 photo

Photo 9 of 12



The Ormonde
2046 - 2048 N.W. Flanders
Portland, Multnomah County, Oregon

Description: North elevation, entry

Heritage Investment Corporation
123 NW Second Avenue, Suite 200
Portland, Multnomah County, Oregon 97209

Dale Archer Photography 1986 photo

Photo 10 of 12



The Ormonde

2046 - 2048 N.W. Flanders

Portland, Multnomah County, Oregon

Description: North elevation, window detail

Heritage Investment Corporation

123 NW Second Avenue, Suite 200

Portland, Multnomah County, Oregon 97209

Dale Archer Photography 1986 photo

Photo 11 of 12



The Ormonde
2046 - 2048 N.W. Flanders
Portland, Multnomah County, Oregon

Description: North elevation, window detail

Heritage Investment Corporation
123 NW Second Avenue, Suite 200
Portland, Multnomah County, Oregon 97209

Dale Archer Photography 1986 photo

Photo 12 of 12