



①-422

CROOK COUNTY BANK BUILDING
A.R. BOWMAN MEMORIAL MUSEUM

Exterior: Workmen building the Crook County
Bank building of native basalt

c. 1909-10

~~NORTH AND WEST AND ELEVATIONS~~

Ernest McKenzie Photo, 1990
970 Ochoco Ave
Prineville, Ore 97754

CROOK COUNTY HISTORICAL SOCIETY
BOWMAN MUSEUM
246 N. MAIN ST. 417-3715
PRINEVILLE, OREGON 97754

Museum copy - #74



2 of 22

CROOK COUNTY BANK BUILDING
A.R. BOWMAN MEMORIAL MUSEUM

Exterior: Completed stone building as the
Crook County Bank. Entrance to
the upstairs offices was gained
by stairway on left of photo

NORTH AND WEST AND PLACEMENT

Ernest McKenzie Photo, 1990
970 Ochoco Ave
Prineville, Ore. 97754

CROOK COUNTY HISTORICAL SOCIETY
BOWMAN MUSEUM
246 N. MAIN ST. 467-3715
PRINEVILLE, OREGON 97754



NO LEFT TURN

TRAFFIC BY SIGNAL

MUSEUM

WARDS

3 of 22

CROOK COUNTY BANK BUILDING
A. D. BOWMAN MAMONIAL MUSEUM

Exterior. West end of building is divided
by one additional post of the same
dimensions as the others.

~~NORTH AND WEST ELEVATIONS~~

Ernest McKenzie Photo, 1990
970 Ochoco Ave
Prineville, Ore 97754

CROOK COUNTY HISTORICAL SOCIETY
BOWMAN MUSEUM
246 N. MAIN ST. 447-3715
PRINEVILLE, OREGON 97754



4 of 22

COOK COUNTY BANK BUILDING
A. D. BOWMAN MEMORIAL MUSEUM

Exterior: showing location of North side
and West side entry ways

Ernest McKenzie, Photo 1990
970 Ochoco Ave
Prineville, Ore 97754

COOK COUNTY HISTORICAL SOCIETY
BOWMAN MUSEUM
246 N. MAIN ST. 447-3715
PRINEVILLE, OREGON 97754

NO
SMOKING

REGISTRATION

EMPLOYEE ONLY

THE
GOLDEN
MOUNTAIN
DESERV

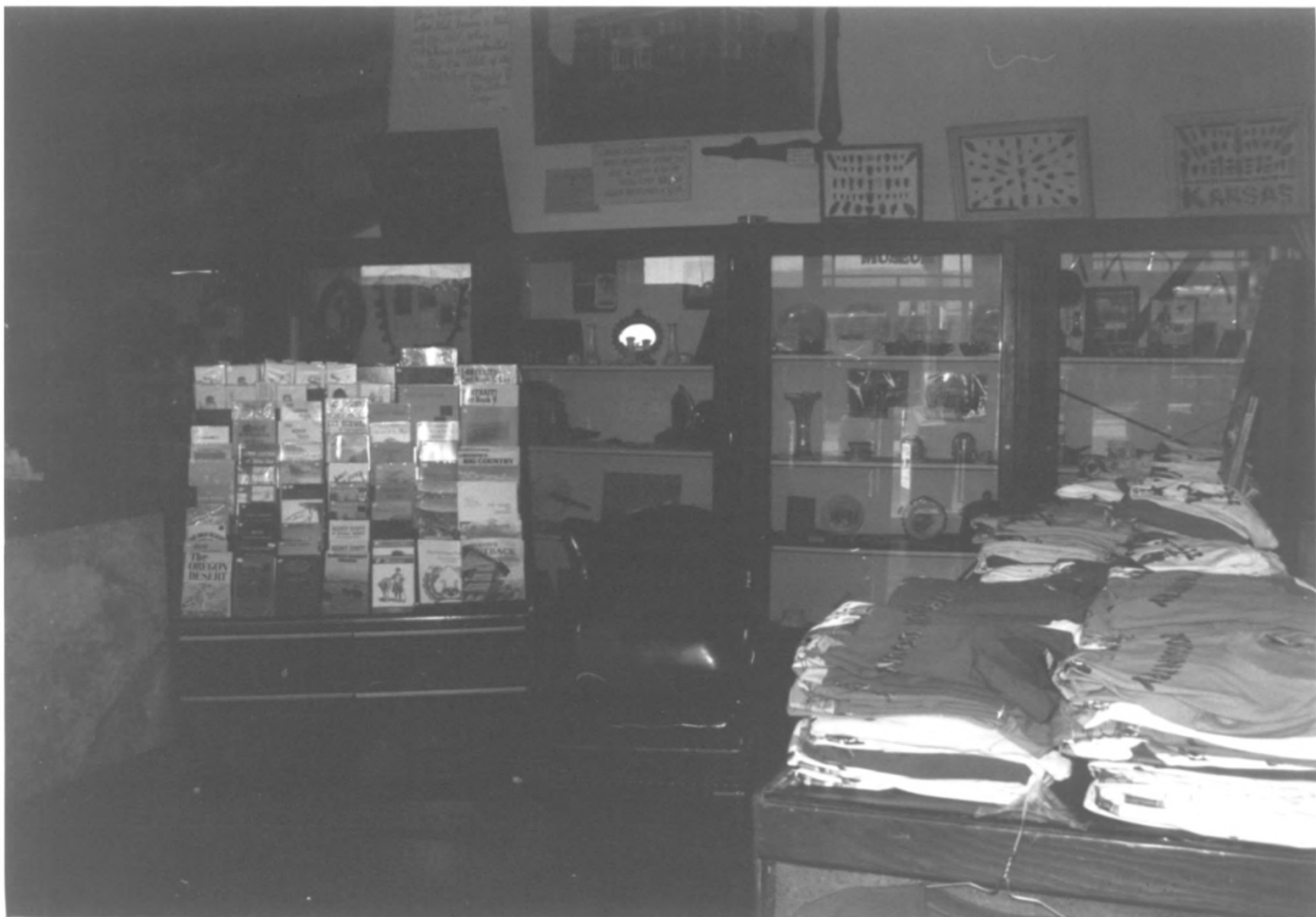
45422

CROOK COUNTY BANK BUILDING
M.R. Bowman mammoth museum

Interior: Grey and dark green marble counter
runs north/south. Glass and mahogany
partition just behind marble counter.

Ernest McKenzie Photo, 1990
970 Ochoco Ave
Prineville, Ore 97754

CROOK COUNTY HISTORICAL SOCIETY
BOWMAN MUSEUM
246 N. MAIN ST. 447-3715
PRINEVILLE, OREGON 97754



6 of 24

Interior: Museum display in front lobby area

CROOK COUNTY BANK BUILDING

A. D. BOWMAN MEMORIAL MUSEUM

Ernest McKenzie Photo, 1990

970 Ochoco Ave

Prineville, Ore 97754

**CROOK COUNTY HISTORICAL SOCIETY
BOWMAN MUSEUM
266 N. MAIN ST. 447-3715
PRINEVILLE, OREGON 97754**



7 of 22 Interior: Public side of the teller cages. Shows
verd antique marble, surmounted by a
solid mahogany top screen with
bronze panels

CROOK COUNTY BANK BUILDING
A. R. BOWMAN MEMORIAL MUSEUM

Ernest McKenzie Photo, 1990
970 Ochoco Ave
Prineville, Ore. 97754

CROOK COUNTY HISTORICAL SOCIETY
BOWMAN MUSEUM
246 N. MAIN ST. 447-3715
PRINEVILLE, OREGON 97754



* 8 of 22

Interior: South side of Museum showing public side of two of the three teller cages.

CROOK COUNTY BANK BUILDING
A.R. BOWMAN MAMMOTH MUSEUM

Ernest McKenzie Photo, 1996
970 Dehoo Ave
Prineville, Ore 97754

**CROOK COUNTY HISTORICAL SOCIETY
BOWMAN MUSEUM
246 N. MAIN ST. 447-3715
PRINEVILLE, OREGON 97754**



*9482

Interior: Worker's side of teller cage with
hardwood drawers below counter.

CROOK COUNTY BANK BUILDING

P.O. BOWMAN MEMORIAL MUSEUM

Ernest McKenzie Photo, 1990
970 Ochoco Ave
Prineville, Ore 97754

**CROOK COUNTY HISTORICAL SOCIETY
BOWMAN MUSEUM
246 N. MAIN ST. 447-3715
PRINEVILLE, OREGON 97754**



#10 of 22

Interior: Etched art glass and mahogany
enclosed private office space on left.
Clear glass divider separated front
open office from teller cages

CROOK COUNTY PRANK BUILDING
A.D. BOWMAN MUSEUM AS MUSEUM.

Ernest McKenzie Photo, 1990
970 Ochoco Ave.
Prineville, Ore 97754

CROOK COUNTY HISTORICAL SOCIETY
BOWMAN MUSEUM
815 N. MAIN ST. 467-3718
PRINEVILLE, OREGON 97754

1 EDISON CYLINDER
TALKING MACHINE
1877



The
VICTOR
Safe & Lock Co.
Cincinnati, Ohio.



10 of 82 Interior: Original safe inside vault.
Tims-lock dismantled

CRook COUNTY BANK BUILDING

A. R. BOWMAN MEMORIAL MUSEUM

Ernest McKenzie Photo, 1990
970 Ochoco Ave
Pineville, Ore 97754

CRook COUNTY HISTORICAL SOCIETY
BOWMAN MUSEUM
246 N. MAIN ST. 447-3715
PINEVILLE, OREGON 97754



* 12922 Interior: Stairway now leads to
balcony and display rooms
upstairs. Doorway is to
the furnace room.

COOK COUNTY BANK BUILDING
A. N. BOWMAN MEMORIAL MUSEUM

Ernest McKenzie Photo, 1990
970 Ochoco Ave
Prineville, Ore 97754

COOK COUNTY HISTORICAL SOCIETY
BOWMAN MUSEUM
246 N. MAIN ST. 447-3715
PRINEVILLE, OREGON 97754



13422 Interior: Balcony and storage
Area

CROOK COUNTY BANK BUILDING
N.M. BOWMAN MEMORIAL MUSEUM

Ernest McKenzie Photo, 1990
970 Ochoco Ave
Prineville, Ore 97754

CROOK COUNTY HISTORICAL SOCIETY
BOWMAN MUSEUM
246 N. MAIN ST. 447-3715
PRINEVILLE, OREGON 97754



14 of 22

Interior: Stairway at balcony
level showing portion
of downstairs display area

CROOK COUNTY BANK BUILDING
H.A. BOWMAN MEMORIAL MUSEUM

Ernest McKenzie Photo, 1990
970 Ochoco Ave
Prineville, Ore. 97754

**CROOK COUNTY HISTORICAL SOCIETY
BOWMAN MUSEUM
246 N. MAIN ST. 417-3715
PRINEVILLE, OREGON 97754**



15422 Interior: First display room on second floor
(Dining Room)

CROOK COUNTY BANK BUILDING
R.R. BOWMAN MEMORIAL MUSEUM

Ernest McKenzie Photo, 1990
970 Ochoco Ave.
Prineville, Ore 97754

**CROOK COUNTY HISTORICAL SOCIETY
BOWMAN MUSEUM
246 N. MAIN ST. 447-3715
PRINEVILLE, OREGON 97754**



#16/22 Interior: second floor room fixed
as "Bedroom"

CROOK COUNTY BANK BUILDING

A.R. BOWMAN MAMMAL MUSEUM

Ernest McKenzie Photo, 1990

970 Ochoco Ave

Pineville, Ore 97754

CROOK COUNTY HISTORICAL SOCIETY

BOWMAN MUSEUM

246 N. MAIN ST. 447-3715

PRINEVILLE, OREGON 97754



17 of 22

CROOK COUNTY BANK BUILDING,
A. R. BOWMAN MEMORIAL MUSEUM

Interior: second floor.

Room fixed as bedroom showing
north and east sides

Ernest McKenzie Photo, 1990
970 Ochoco Ave
Prineville, Ore 97754

**CROOK COUNTY HISTORICAL SOCIETY
BOWMAN MUSEUM
246 N. MAIN ST. 447-3715
PRINEVILLE, OREGON 97754**



184 ~~24~~ Interior: second floor
"Barn Room"

CROOK COUNTY BANK BUILDING
A.D. BOWMAN MEMORIAL MUSEUM

Ernest McKenzie Photo, 1990
970 Ochoco Ave
Prineville, Ore 97754

**CROOK COUNTY HISTORICAL SOCIETY
BOWMAN MUSEUM
246 N. MAIN ST. 447-3715
PRINEVILLE, OREGON 97754**



19 of 22

Interior: second floor
General Store

CROOK COUNTY BANK BUILDING
A. N. BOWMAN MEMORIAL MUSEUM

Ernest McKenzie Photo, 1990
970 Ochoco Ave
Prineville, Ore. 97754

**CROOK COUNTY HISTORICAL SOCIETY
BOWMAN MUSEUM
246 N. MAIN ST. 447-3715
PRINEVILLE, OREGON 97754**



± 20 4 22 Interior: second floor
"General Store"

CROOK COUNTY BANK BUILDING
R. D. BOWMAN MEMORIAL MUSEUM

Ernest McKenzie Photo, 1990
970 Ochoco Ave
Prineville, Ore 97754

CROOK COUNTY HISTORICAL SOCIETY

BOWMAN MUSEUM

246 N. MAIN ST. 447-3715

PRINEVILLE, OREGON 97754



24 of 25 Interior: second floor
Industrial Room

CROOK COUNTY BANK BUILDING
A. D. BOWMAN MEMORIAL MUSEUM

Ernest McKenzie, Photo 1990
970 Ochoco Ave.
Prineville, Ore 97754

**CROOK COUNTY HISTORICAL SOCIETY
BOWMAN MUSEUM
246 N. MAIN ST. 447-3715
PRINEVILLE, OREGON 97754**



22 of 22

Interior: Shows alignment
of 3 of the 6 lights
hanging downstairs

CROOK COUNTY BANK BUILDING
R.D. BOWMAN MEMORIAL MUSEUM

Ernest Mc Kenzie Photo, 1990
970 Ochoco Ave
Prineville, Ore 97754

**CROOK COUNTY HISTORICAL SOCIETY
BOWMAN MUSEUM
246 N. MAIN ST. 447-3715
PRINEVILLE, OREGON 97754**