



GRANITEVILLE HISTORIC DISTRICT  
Photo credit: AASLH

Graniteville Historic District  
Graniteville, South Carolina

Photo No. 1

Courtesy: The Graniteville Company

View: Aerial view of Graniteville  
circa 1970 with Graniteville Historic  
District delineated in red.



GRANITEVILLE HISTORIC DISTRICT  
Photo credit: AASLH

Graniteville Historic District  
Graniteville, South Carolina

Photo No. 2

By: George R. Adams, AASLH

Negative at: Historic Sites Survey

Date: April, 1977

View: From west, showing gate of  
Graniteville Canal near Bridge  
Creek Pond.



GRANITEVILLE HISTORIC DISTRICT  
Photo credit: AASLH

Graniteville Historic District  
Graniteville, South Carolina

Photo No. 3

By: George R. Adams, AASLH

Negative at: Historic Sites Survey

Date: April, 1977

View: From north, showing  
Graniteville Canal



Graniteville Historic District  
Graniteville, South Carolina

Photo No. 4

By: Ralph J. Christian, AASLH

Negative at: Historic Sites Survey

Date: November, 1976

View: From east, showing front  
(east) facade of original  
Graniteville Mill.





GRANITEVILLE HISTORIC DISTRICT  
Photo credit: AASLH

Graniteville Historic District  
Graniteville, South Carolina

Photo No. 5

By: Ralph J. Christian, AASLH

Negative at: Historic Sites Survey

Date: November 1976

View: From northeast, showing front  
facade of original Graniteville Mill.



GRANITEVILLE HISTORIC DISTRICT

Photo credit: AASLH

Graniteville Historic District  
Graniteville, South Carolina

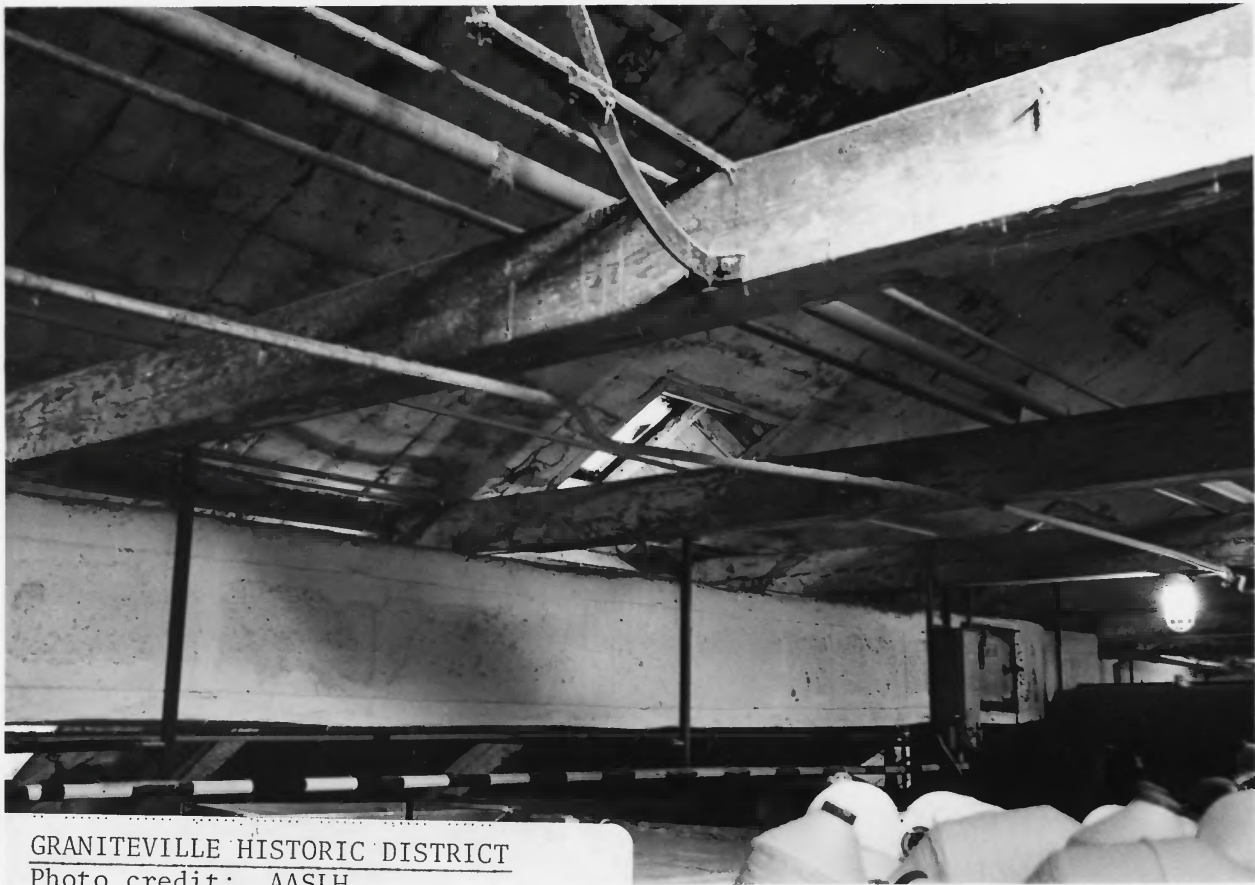
Photo No. 6

By: Ralph J. Christian, AASLH

Negative at: Historic Sites Survey

Date: November 1976

View: From west, showing portion of  
rear (west) facade of original  
Graniteville Mill.



GRANITEVILLE HISTORIC DISTRICT

Photo credit: AASLH



GRANITEVILLE HISTORIC DISTRICT  
Photo credit: AASLH

Graniteville Historic District  
Graniteville, South Carolina

Photo No. 8

By: Ralph J. Christian, AASLH

Negative at: Historic Sites Survey

Date: November 1976

View: From northwest, showing  
typical Early Gothic Revival Worker's  
House on Gregg Street and St. John's  
Methodist Church and its manse.



GRANITEVILLE HISTORIC DISTRICT

Photo credit: AASLH



Graniteville Historic District  
Graniteville, South Carolina

Photo No. 9

By: George R. Adams, AASLH

Negative at: Historic Sites Survey

Date: April, 1977

View: From southwest, showing  
typical Early Gothic Revival Workers'  
Houses on Gregg Street.



GRANITEVILLE HISTORIC DISTRICT

Photo credit: AASLH

Graniteville Historic District  
Graniteville, South Carolina

Photo No. 10

By: George R. Adams, AASLH

Negative at: Historic Sites Survey

Date: April, 1977

View: From southwest, showing front  
(west) facade of Graniteville  
Academy.



Handwritten signature: *Walter D. C. C. / 15/61*



Edith, 6/15/61