

# Table of Photographs and Images

## Skidmore/Old Town Historic District National Historic Landmark Nomination

#	Description/Location	Image by	Date	Negative	View	Electronic file name
<b>Historical Images (Archival)*</b>						
H1	SW Front Ave	Unknown	1931	OHS	Looking N from SW Ash St	OR_MultnomahCounty_SkidmoreOldTown_H1andH2.doc
H2	Downtown Portland, between SW Oak & SW Everett streets	Laurgaard Report	1928	SPARC	W Burnside St widening; Aerial looking W	OR_MultnomahCounty_SkidmoreOldTown_H1andH2.doc
H3	New Market Theater, engraving	West Shore	1873	-	Looking SW from Vine St	OR_MultnomahCounty_SkidmoreOldTown_H3andC1.doc
<b>Contemporary Images (Archival)*</b>						
C1	NW 1st Avenue	J. Uecker	2005	BOP	Looking S from NW Couch St	OR_MultnomahCounty_SkidmoreOldTown_H3andC1.doc
C2	NW Couch Street	J. Uecker	2005	BOP	Looking E from NW 3 <sup>rd</sup> Ave	OR_MultnomahCounty_SkidmoreOldTown_C2andC3.doc
C3	West Burnside	J. Uecker	2005	BOP	Looking E from NW 2 <sup>nd</sup> Ave	OR_MultnomahCounty_SkidmoreOldTown_C2andC3.doc
C4	SW Pine Street	J. Uecker	2005	BOP	Looking E from SW 3 <sup>rd</sup> Ave	OR_MultnomahCounty_SkidmoreOldTown_C4andC5.doc
C5	SW Oak Street	J. Uecker	2005	BOP	Looking W from Naito Pkwy/Front	OR_MultnomahCounty_SkidmoreOldTown_C4andC5.doc
C6	Norton House, 29-87 NW 1st Avenue	J. Uecker	2005	BOP	Looking NW	OR_MultnomahCounty_SkidmoreOldTown_C6andC7.doc
C7	Skidmore Fountain SW 1st Ave & SW Ankeny St.	J. Uecker	2005	BOP	Looking E	OR_MultnomahCounty_SkidmoreOldTown_C6andC7.doc
C8	New Market Theater, 50 SW 2nd Ave (1st Avenue façade)	J. Uecker	2005	BOP	1st Ave. façade	OR_MultnomahCounty_SkidmoreOldTown_C8andC9.doc
C9	New Market Annex, 58 SW 2nd Ave	J. Uecker	2005	BOP	Looking NE	OR_MultnomahCounty_SkidmoreOldTown_C8andC9.doc
C10	Haseltine Building, 133 SW 2nd Avenue	J. Uecker	2005	BOP	Looking NW	OR_MultnomahCounty_SkidmoreOldTown_C10andC11.doc
C11	Fechheimer & White Building, 233 SW Naito Pkwy (Front Ave)	J. Uecker	2005	BOP	E façade	OR_MultnomahCounty_SkidmoreOldTown_C10andC11.doc
C12	Smith Block, 111-113 SW Naito Pkwy (Front Ave)	J. Uecker	2005	BOP	E façade	OR_MultnomahCounty_SkidmoreOldTown_C12andC13.doc
C13	Failing Building, 235 SW 1st Avenue	J. Uecker	2005	BOP	Looking NW	OR_MultnomahCounty_SkidmoreOldTown_C12andC13.doc
<b>Contemporary Images of Cast Iron Details</b>						
CI1	New Market Theater and New Market South Wing, 3 images.	J. Uecker	2005	BOP	Multiple	OR_MultnomahCounty_SkidmoreOldTown_CI1.doc
CI2	Merchants Hotel, 3 images.	J. Uecker	2005	BOP	Multiple	OR_MultnomahCounty_SkidmoreOldTown_CI2.doc
CI3	Bickel Block and Blagan Block, 4 images.	J. Uecker	2005	BOP	Multiple	OR_MultnomahCounty_SkidmoreOldTown_CI3.doc
CI4	Fechheimer & White Building and Delschneider Building, 3 images.	J. Uecker	2005	BOP	Multiple	OR_MultnomahCounty_SkidmoreOldTown_CI4.doc
<b>Supplemental Historical and Other Images</b>						
S1	Couch & Co. and Allen & De Witte Co., Front Ave north of SW Ankeny St	Unknown	1850	OHS	View from NE	OR_MultnomahCounty_SkidmoreOldTown_S1andS2.doc
S2	Hallock & McMillan Building, engraving	Kuchel & Dresel	c. 1858	-	E façade	OR_MultnomahCounty_SkidmoreOldTown_S1andS2.doc
S3	SW 1st Avenue	Unknown	1871	OHS	Looking N from SW Stark St	OR_MultnomahCounty_SkidmoreOldTown_S3andS4.doc
S4	SW 1st Avenue	Unknown	1876	OHS	Looking N from SW Pine St	OR_MultnomahCounty_SkidmoreOldTown_S3andS4.doc

#	Description/Location	Image by	Date	Negative	View	Electronic file name
S5	New Market Theater, 50 SW 2nd Ave (1st Avenue façade)	Unknown	c. 1872	OHS	Looking SW	OR_MultnomahCounty_SkidmoreOldTown_S5andS6.doc
S6	Starr Block (demolished), SW Front Avenue between SW Oak & SW Pine streets	Unknown	1885	OHS	W façade	OR_MultnomahCounty_SkidmoreOldTown_S5andS6.doc
S7	Merchant's Hotel, 121-139 NW 2nd, engraving	West Shore	1888	-	View from NE	OR_MultnomahCounty_SkidmoreOldTown_S7.doc
S8	Skidmore Fountain with horse-drawn wagon	Angelus Studio	c. 1910	UO	Looking E	OR_MultnomahCounty_SkidmoreOldTown_S8andS9.doc
S9	Erickson's Saloon, 5 NW 2nd Avenue	unknown		OHS	Interior	OR_MultnomahCounty_SkidmoreOldTown_S8andS9.doc
S10	Oregon & Washington Trust & Savings Building, 122 SW 1st Avenue	Unknown	c. 1925	OHS	2nd building from left, looking NE	OR_MultnomahCounty_SkidmoreOldTown_S10andS11.doc
S11	Willamette River, west side waterfront conditions	Unknown	c. 1928	OHS	Looking NW from SW Alder St	OR_MultnomahCounty_SkidmoreOldTown_S10andS11.doc
S12	Intersection of NW 3rd and Burnside	Unknown	c. 1929	OHS	Looking S from NW Couch St	OR_MultnomahCounty_SkidmoreOldTown_S12andS13.doc
S13	SW Front Ave	M. White	c. 1937	OHS	Looking S from Burnside Bridge	OR_MultnomahCounty_SkidmoreOldTown_S12andS13.doc
S14	Hallock & McMillan and Fechheimer & White buildings	M. White	c. 1937	OHS	Front Ave. façades	OR_MultnomahCounty_SkidmoreOldTown_S14andS15.doc
S15	NW Front Ave (illustration)	Unknown	c. 1890	OHS	Looking S past NW Couch St	OR_MultnomahCounty_SkidmoreOldTown_S14andS15.doc
S16	237 SW Front Avenue (Hallock & McMillan Building)	J. Uecker	2005	BOP	E façade	OR_MultnomahCounty_SkidmoreOldTown_S16.doc

\* One set each of black-and-white, archival-quality prints submitted separately to NPS and Oregon SHPO. These images also reproduced as part of nomination form.

**Negative repository key:**

BOP – City of Portland, Oregon, Bureau of Planning, 1900 SW 4<sup>th</sup> Ave., Portland, OR 97201

OHS – Oregon Historical Society, 1200 SW Park Ave., Portland, OR 97205

SPARC – Stanley Parr Archives & Records Center, 9360 N. Columbia Blvd., Portland, OR 97203

UO – University of Oregon, Special Collections, 1299 University of Oregon, Eugene, OR 97403



C10: Haseltine Building, 133 SW 2<sup>nd</sup> Ave., looking northwest. Bureau of Planning, 2005.



C11: Fechheimer & White Building, 233 SW Pkwy., east façade. Bureau of Planning, 2005.



C12: Smith Block, 111-113 SW Naito Pkwy., east façade. Bureau of Planning, 2005.



C13: Failing Building, 235 SW 1<sup>st</sup> Ave., looking northwest. Bureau of Planning, 2005.



C2: NW Couch St., looking east from NW 3<sup>rd</sup> Ave. Bureau of Planning, 2005



C3: W Burnside St., looking E from NW 2<sup>nd</sup> Ave. Bureau of Planning, 2005



C4: SW Pine St., looking east from SW 3<sup>rd</sup> Ave. Bureau of Planning, 2005.



C5: SW Oak St., looking west from Naito Parkway (Front Ave.). Bureau of Planning, 2005.



C6: Norton House, 29-87 NW 1<sup>st</sup> Ave., looking southwest. Bureau of Planning, 2005.



C7: Skidmore Fountain, SW 1<sup>st</sup> Ave. and Ankeny St., looking east. Bureau of Planning, 2005.



C8: New Market Theater, SW 1<sup>st</sup> Ave, façade.  
Bureau of Planning, 2005.



C9: New Market Annex, 58 SW 2<sup>nd</sup> Ave., looking northeast.  
Bureau of Planning, 2005.

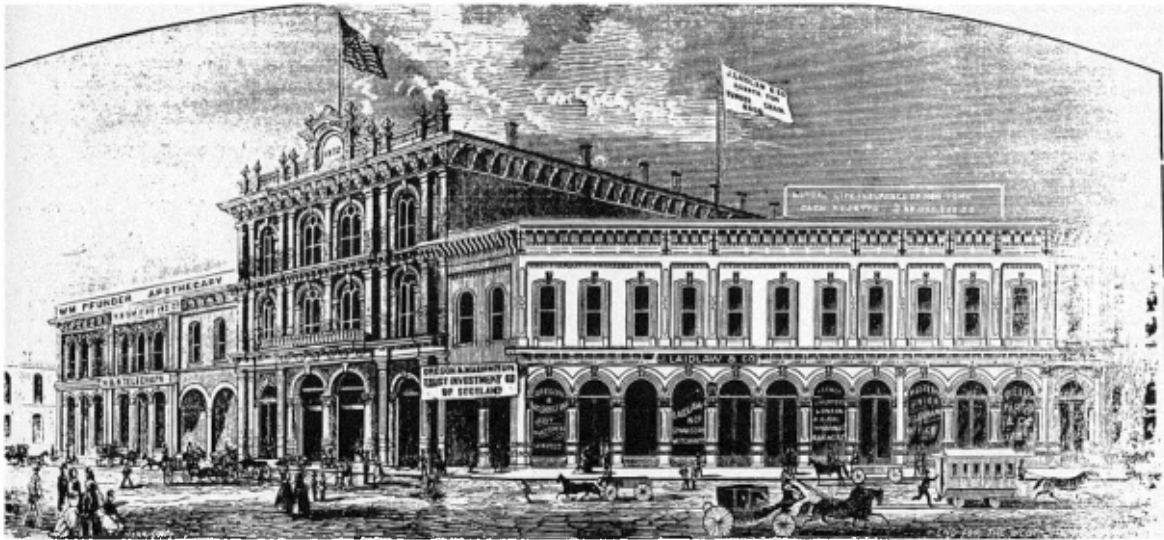




H1: SW Front Ave. 1931. Oregon Historical Society



H2: Downtown Portland. 1928. Aerial view looking west showing new Burnside Bridge and ongoing Burnside widening project. City of Portland Stanley Parr Archives and Record Center, Laugaard files.



H3: New Market Theater. 1873. Engraving from *West Shore Magazine*.



C1: NW 1<sup>st</sup> Ave. looking south from NW Couch. 2005. Bureau of Planning.

## CI1: Cast-Iron Details

New Market Theater (1872), 50 SW 2<sup>nd</sup> (#45), right.



New Market, South Wing (1871), 75-83 SW 1<sup>st</sup> (#61), below & bottom.



## CI2: Cast-Iron Details



Merchants Hotel (1880, 1884), 222 NW Davis (#12, 28), above, left, & below.



### CI3: Cast-Iron Details



Bickel Block (1883), 25-33 NW Front (#91), left & below.



Blagan Block (1888), 30 NW 1<sup>st</sup> (#71), right & below.



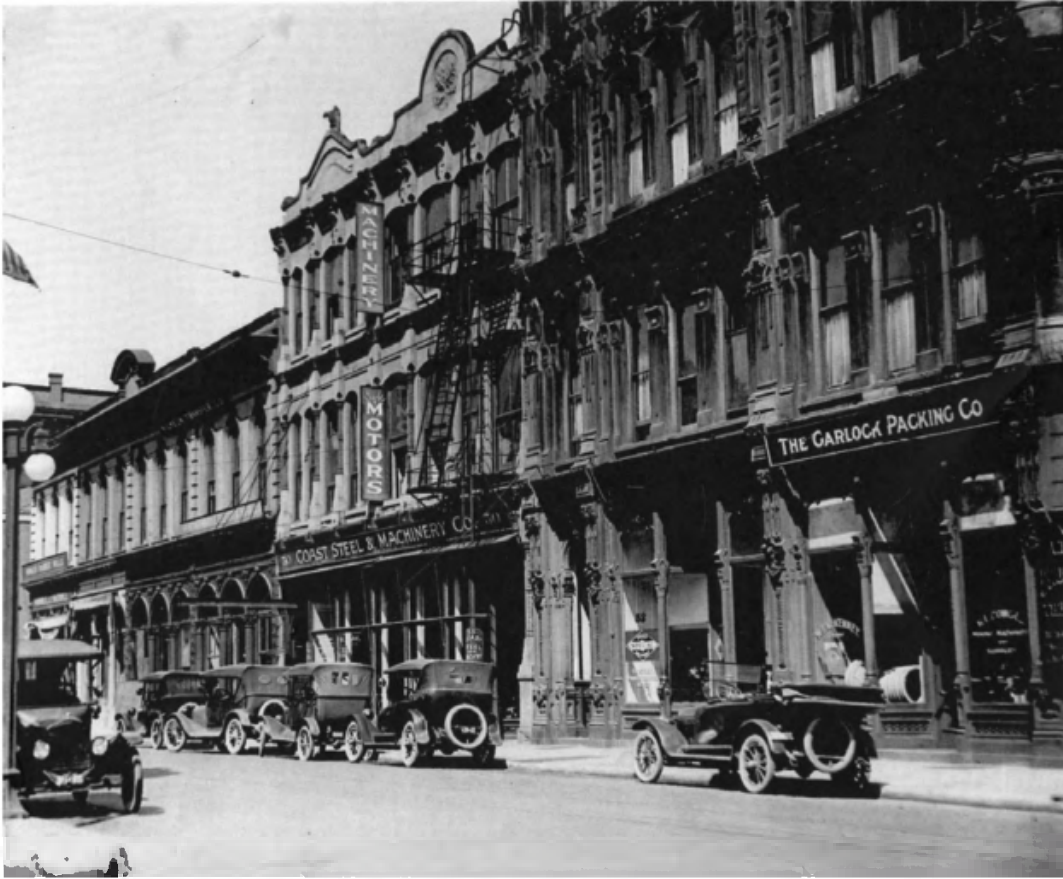
## C4: Cast-Iron Details



Fechheimer & White Building (1870), 223 SW Front (#98), above & left.

Delschneider Building (1859, detail of Oregon Iron Works mark), 71 SW Oak (#90), right.





S10: Oregon & Washington Trust & Savings Building (with Coast Steel and Machinery sign) (122 SW 1<sup>st</sup> Ave.), looking northeast. Photographer unknown, ca.1925. Oregon Historical Society



S11: Willamette River, west side waterfront conditions, view looking northwest from about SW Alder St. Photographer unknown, ca.1928. Oregon Historical Society.



S12: Intersection of 3<sup>rd</sup> and W Burnside, view looking south from NW Couch St. Photographer unknown, ca.1929. Oregon Historical Society.



S13: SW Front Ave., view looking south from the Burnside Bridge. Minor White, photographer, ca.1937. Oregon Historical Society.





S14: Looking west at 237 and 233 Southwest Front Avenue. Hallock & McMillan (left) and Fechheimer & White buildings, Front Ave. façades. Minor White, photographer, ca.1937. Oregon Historical Society.



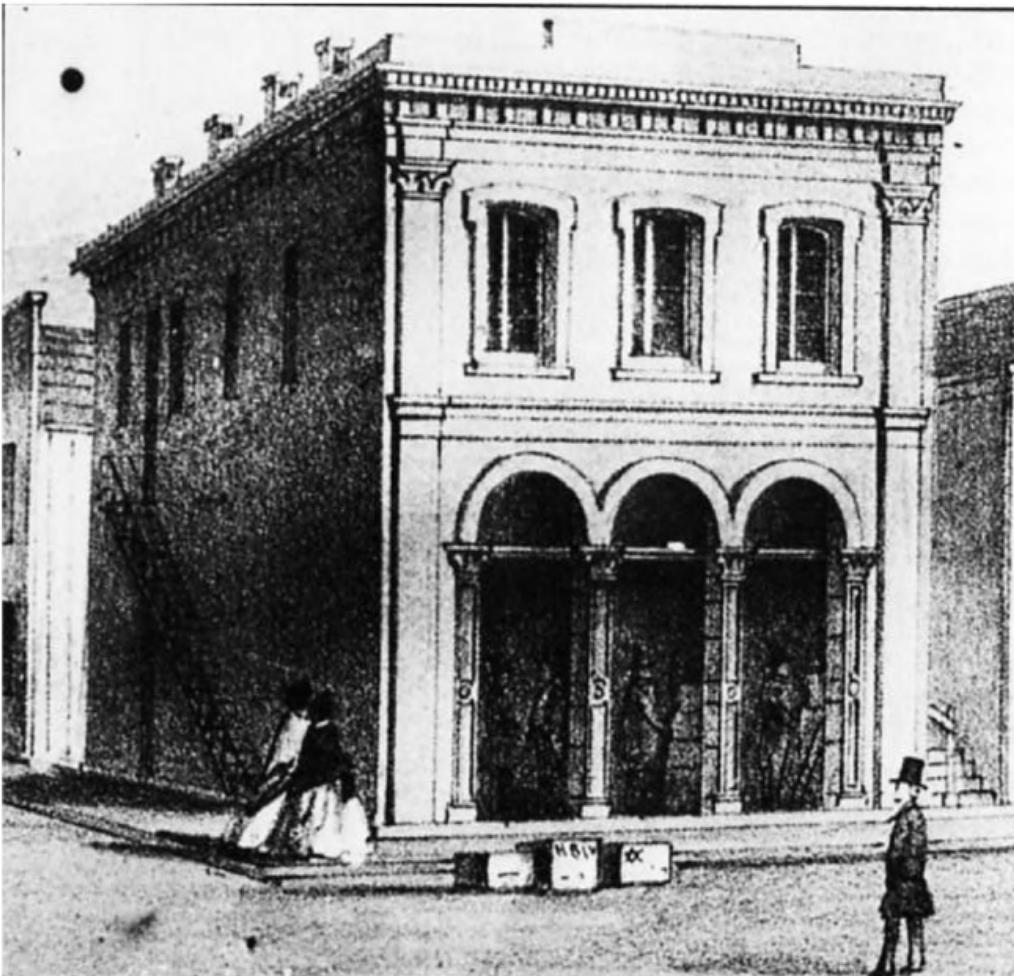
S15: NW Front Avenue looking south past NW Couch Street. Illustrator unknown, ca.1890. Oregon Historical Society.



S16: Hallock and McMillan Building (237 SW Front Ave.), east façade. Compare with S2 and S14. Jeffrey Uecker, photographer, 2005. City of Portland Bureau of Planning.



S1: Couch & Co. and Allen & De Witte Co. (Front Ave. north of Ankeny St.), view from the northeast. Photographer unknown, 1850. Oregon Historical Society.



S2: Engraving of the Hallock & McMillan Building, east façade. From *Portland, Multnomah County, Oregon*, Kuchel & Dresel, lithographer, 1858.



S3: SW 1<sup>st</sup> Ave., looking north from Stark St. Photographer unknown, 1871. Oregon Historical Society.



S4: SW 1<sup>st</sup> Avenue, looking north from Pine St. Photographer unknown, 1876. Oregon Historical Society.



S5: New Market Theater (50 SW 2<sup>nd</sup>), looking southwest at north side façade and 1<sup>st</sup> St. facade. Photographer unknown, 1872. Oregon Historical Society.



S6: Starr Block (SW Front Ave., between Oak & Pine—demolished), west façade from Front St. Photographer unknown, 1885. Oregon Historical Society.



S7: Merchant's Hotel (121-139 NW 2<sup>nd</sup>), view from the northeast. Engraving from *West Shore Magazine*, illustrator unknown, 1888.



S8: Looking east at Skidmore Fountain with horse-drawn wagon and Bank of British Columbia Building, looking east. Angelus Studio, photographer, ca.1910. University of Oregon Libraries Special Collections.



S9: Erickson's Saloon (5 NW 2<sup>nd</sup>), interior view. Photographer and date unknown. Oregon Historical Society.