

Earlscourt Historic District

Narragansett Pier, RI

Photographer: Detroit Photographic Co.

Date: ca. 1895

Negative filed at: R. I. Historical Society Library

View of Earlscourt Water tower and Sherry cottages
from east.

Photo No. 6

Not to be Published
Without Written Permission
of the Rhode Island
Historical Society

Copy neg. # RHI X3 2504. Narragansett, RI. n.d. View of Earl's Court looking at the houses on
Gibson Ave. Photo by Detroit Photographic Co.



Water Tower
Earlscourt Historic District
Narragansett Pier, RI

Photographer: Charlene Roise
Date: March 1981

Negative filed at: Rhode Island Historical
Preservation Commission

View from northeast.

Photo #

Photo # 7



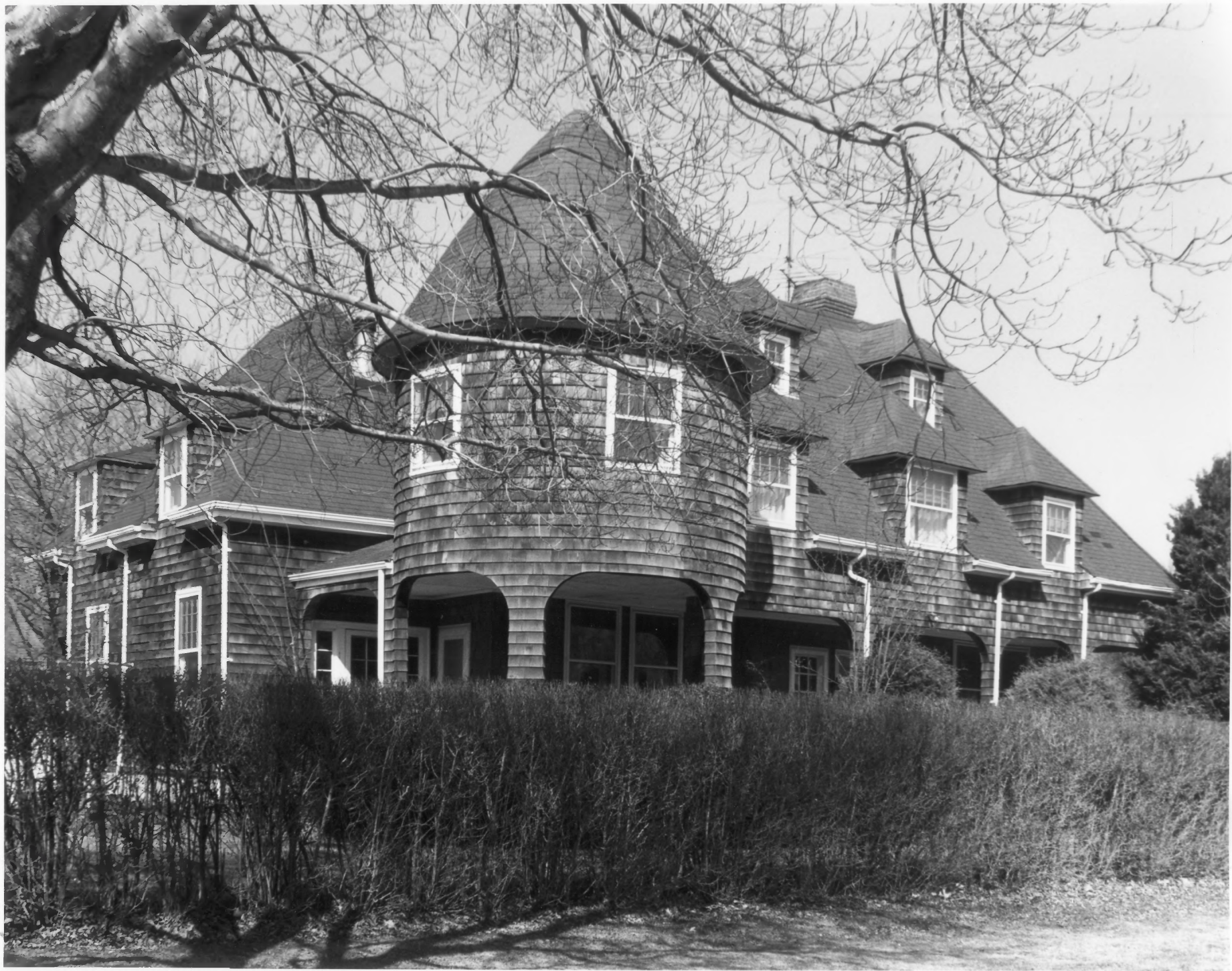
50 Earles Court Road
Earlscourt Historic District
Narragansett Pier, RI

Photographer: Charlene Roise
Date: March 1981

Negative filed at: Rhode Island Historical
Preservation Commission

North facade of "The Hut" from Earles Court Road.

Photo # 8



65 Gibson Avenue
Earlscourt Historic District
Narragansett Pier, RI

Photographer: Charlene Roise
Date: March 1981

Negative filed at: Rhode Island Historical
Preservation Commission

View of the southeastern Sherry Cottage from
Gibson Avenue (south and east elevations).

Photo # 9



Earlscourt Historic District
Narragansett Pier, RI

Photographer: Charlene Roise
Date: March 1981

Negative filed at: Rhode Island Historical
Preservation Commission

View of south elevations of 84 Westmoreland Street
(left) and 51 Gibson Avenue (right) from Central
Court.

Photo # 10