



Front Facades of 1735 and 1729-31 N.W. Irving,
early 1970's. Oregon Historical Society,
Negative R-454.

FEB 25 1980

Couch Family Investment Development
1721-1735 N.W. Irving
718 N.W. 18th Street
Portland, Multnomah Co., Oregon

Oregon Historical Society Photo
1230 S.W. Park Avenue
Portland, Oregon 97205

1 of 10

Front elevations of 1735 and 1729-31
N.W. Irving, Early 1970's.

JAN 14 1980



Couch Family Investment Development
1721-1735 N.W. Irving
718 N.W.18th Street
Portland, Multnomah Co., Oregon

Catherine Galbraith Photo, 1979
1415 S.W. Sherrett Street
Portland, Oregon 97212

FEB 25 1980

2 of 10
View of 1735, 1729-31, 1721
N.W. Irving, Facing Northeast

JAN 14 1980
Front Facades of 1735, 1729-31,
1721 NW Irving, facing northeast.
(Front Facades of Campbell Town-
houses to East)
Portland, Oregon. August, 1979.



Couch Family Investment Development
1721-1735 N.W. Irving
718 N.W. 18th Street
Portland, Multnomah Co., Oregon

Catherine Galbraith Photo, 1979
1415 S.W. Sherrett Street
Portland, Oregon 97212

FEB 25 1980

3 of 10
Side elevation, 1735 N.W.
Irving, Facing Northeast

JAN 14 1980

Front and Side Facades of
1735, 1729-31, 1721 NW Irving
facing northeast.
Portland, Oregon. August, 1979



Couch Family Investment Development
1721-1735 N.W. Irving
718 N.W. 18th Street
Portland, Multnomah Co., Oregon

Catherine Galbraith Photo, 1979
1415 S.W. Sherrett Street
Portland, Oregon 97212

FEB 25 1980

4 of 10
Front (North) Elevation,
1735 N.W. Irving

JAN 14 1980

Front Facade of 1735 NW
Irving, facing North.
Portland, Oregon. August, 1979



Couch Family Investment Development
1721-1735 N.W. Irving
718 N.W. 18th Street
Portland, Multnomah Co., Oregon

Catherine Galbraith Photo, 1979
1415 S.W. Sherrett Street
Portland, Oregon 97212

FEB 25 1980

5 of 10
Front (North) Elevation
1729-31 N.W. Irving

JAN 14 1980

Front Facade of 1729-31
NW Irving, facing North.
Portland, Oregon. August, 1979



Couch Family Investment Development
1721-1735 N.W. Irving
718 N.W. 18th Street
Portland, Multnomah Co., Oregon

Catherin Galbraith Photo, 1979
1415 S.W. Sherrett Street
Portland, Oregon 97212

6 of 10
Porch Detail
1721 N.W. Irving

FEB 25 1980

JAN 14 1980

Close-up of Front Facade/
Porch of 1721 NW Irving,
facing Northwest.
Portland, Oregon. August, 1979



Couch Family Investment Development
1721-1735 N.W. Irving
718 N.W. 18th Street
Portland, Multnomah Co., Oregon

Catherine Galbraith Photo, 1979
1415 S.W. Sherrett Street
Portland, Oregon 97212

7 of 10
Detail of Bay Window
1729-31 N.W. Irving

FEB 25 1980

JAN 14 1980

Partial view of projecting Bay Window
at 1729-31 NW Irving, facing northeast.
Portland, Oregon. August, 1979.



Couch Family Investment Development
1721-1735 N.W. Irving
718 N.W. 18th Street
Portland, Multnomah Co., Oregon

Catherine Galbraith Photo, 1979
1415 S.W. Sherrett Street
Portland, Oregon 97212

FEB 25 1980

8 of 10
Interior of Attic
1735 N.W. Irving

JAN 14 1980

Interior of Attic at 1735 NW
Irving, ceiling and room division.
Portland, Oregon. August, 1979.



Couch Family Investment Development
1721-1735 N.W. Irving
718 N.W. 18th Street
Portland, Multnomah Co., Oregon

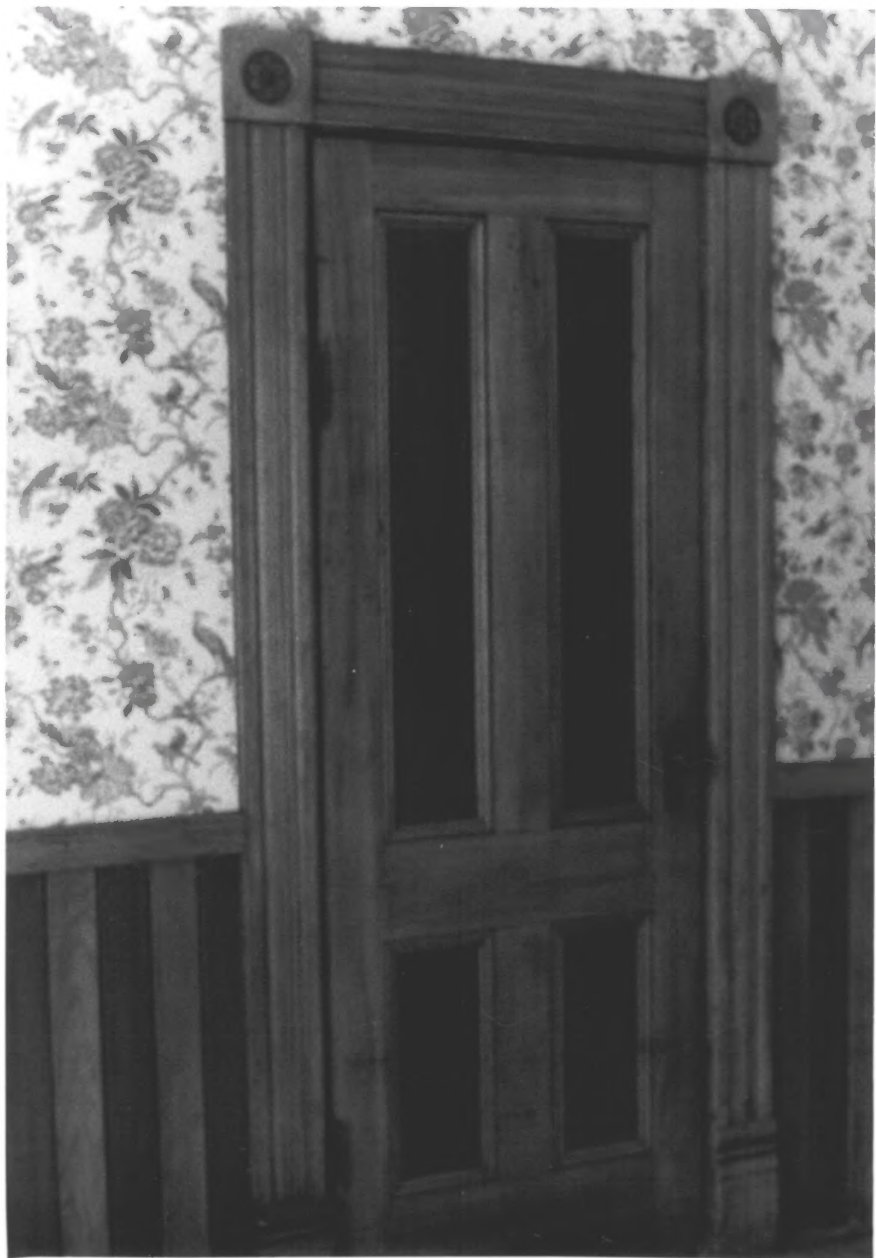
Catherine Galbraith Photo, 1979
1415 S.W. Sherrett Street
Portland, Oregon 97212

~~FEB 25 1980~~

9 of 10
Staircase Detail
1735 N.W. Irving

JAN 14 1980

Interior of Entry Hall of
1735 NW Irving, stairway detail
and newel post.
Portland, Oregon. August, 1979.



Couch Family Investment Development
1721-1735 N.W. Irving
718 N.W. 18th Street
Portland, Multnomah Co., Oregon

Catherine Galbraith Photo, 1979
1415 S.W. Sherrett Street
Portland, Oregon 97212

FEB 25 1980

10 of 10
Detail of door and wainscotting
(original) 1735 N.W. Irving

JAN 14 1980

Interior of Dining Room of
1735 NW Irving, original door
and wainscotting.
Portland, Oregon. August, 1979.