



UNITED STATES DEPARTMENT OF THE INTERIOR
NATIONAL PARK SERVICE

**NATIONAL REGISTER OF HISTORIC PLACES
PROPERTY PHOTOGRAPH FORM**

FOR NPS USE ONLY
RECEIVED SEP 9 1975
DATE ENTERED OCT 29 1975

SEE INSTRUCTIONS IN *HOW TO COMPLETE NATIONAL REGISTER FORMS*
TYPE ALL ENTRIES ENCLOSE WITH PHOTOGRAPH

1 NAME

HISTORIC Cow Camp

AND/OR COMMON

2 LOCATION

CITY, TOWN	<input checked="" type="checkbox"/> VICINITY OF	COUNTY	STATE
Joshua Tree National Monument	Twentynine Palms	San Bernardino	California

3 PHOTO REFERENCE

PHOTO CREDIT National Park Service photo

DATE OF PHOTO February 1973

NEGATIVE FILED AT Joshua Tree National Monument
Twentynine Palms, California

4 IDENTIFICATION

DESCRIBE VIEW, DIRECTION, ETC. IF DISTRICT. GIVE BUILDING NAME & STREET

PHOTO NO 1 43

Ruins of cabin at Cow Camp -- a rubble stone fireplace and miscellaneous debris



UNITED STATES DEPARTMENT OF THE INTERIOR
NATIONAL PARK SERVICE

**NATIONAL REGISTER OF HISTORIC PLACES
PROPERTY PHOTOGRAPH FORM**

FOR NPS USE ONLY

RECEIVED SEP 9 1975

DATE ENTERED OCT 29 1975

SEE INSTRUCTIONS IN *HOW TO COMPLETE NATIONAL REGISTER FORMS*
TYPE ALL ENTRIES ENCLOSE WITH PHOTOGRAPH

1 NAME

HISTORIC

Cow Camp

AND/OR COMMON

2 LOCATION

CITY, TOWN

Joshua Tree National Monument

VICINITY OF

Twentynine Palms

COUNTY

San Bernardino

STATE

California

3 PHOTO REFERENCE

PHOTO CREDIT National Park Service photo

DATE OF PHOTO February 1973

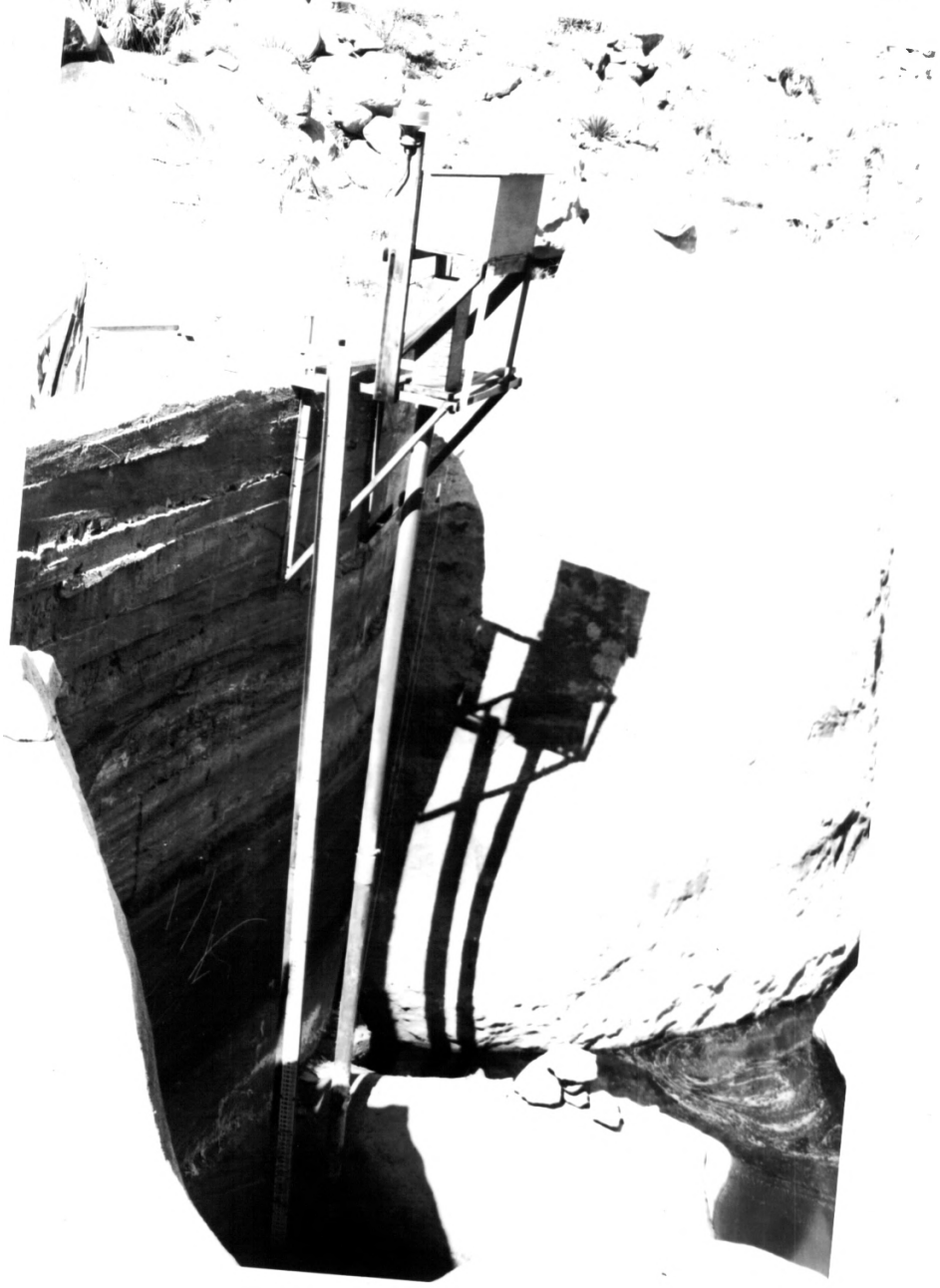
NEGATIVE FILED AT Joshua Tree National Monument
Twentynine Palms, California

4 IDENTIFICATION

DESCRIBE VIEW, DIRECTION, ETC. IF DISTRICT. GIVE BUILDING NAME & STREET

PHOTO NO. 2 of 3

Ruins of old rock-lined well at Cow Camp



UNITED STATES DEPARTMENT OF THE INTERIOR
NATIONAL PARK SERVICE

NATIONAL REGISTER OF HISTORIC PLACES
PROPERTY PHOTOGRAPH FORM

FOR NPS USE ONLY

RECEIVED SEP 9 1975

DATE ENTERED OCT 29 1975

SEE INSTRUCTIONS IN *HOW TO COMPLETE NATIONAL REGISTER FORMS*
TYPE ALL ENTRIES ENCLOSE WITH PHOTOGRAPH

1 NAME

HISTORIC

Cow Camp

AND/OR COMMON

2 LOCATION

CITY, TOWN

VICINITY OF

COUNTY

STATE

Joshua Tree National Monument

Twentynine Palms

San Bernardino

California

3 PHOTO REFERENCE

PHOTO CREDIT National Park Service photo

DATE OF PHOTO February 1973

NEGATIVE FILED AT Joshua Tree National Monument
Twentynine Palms, California

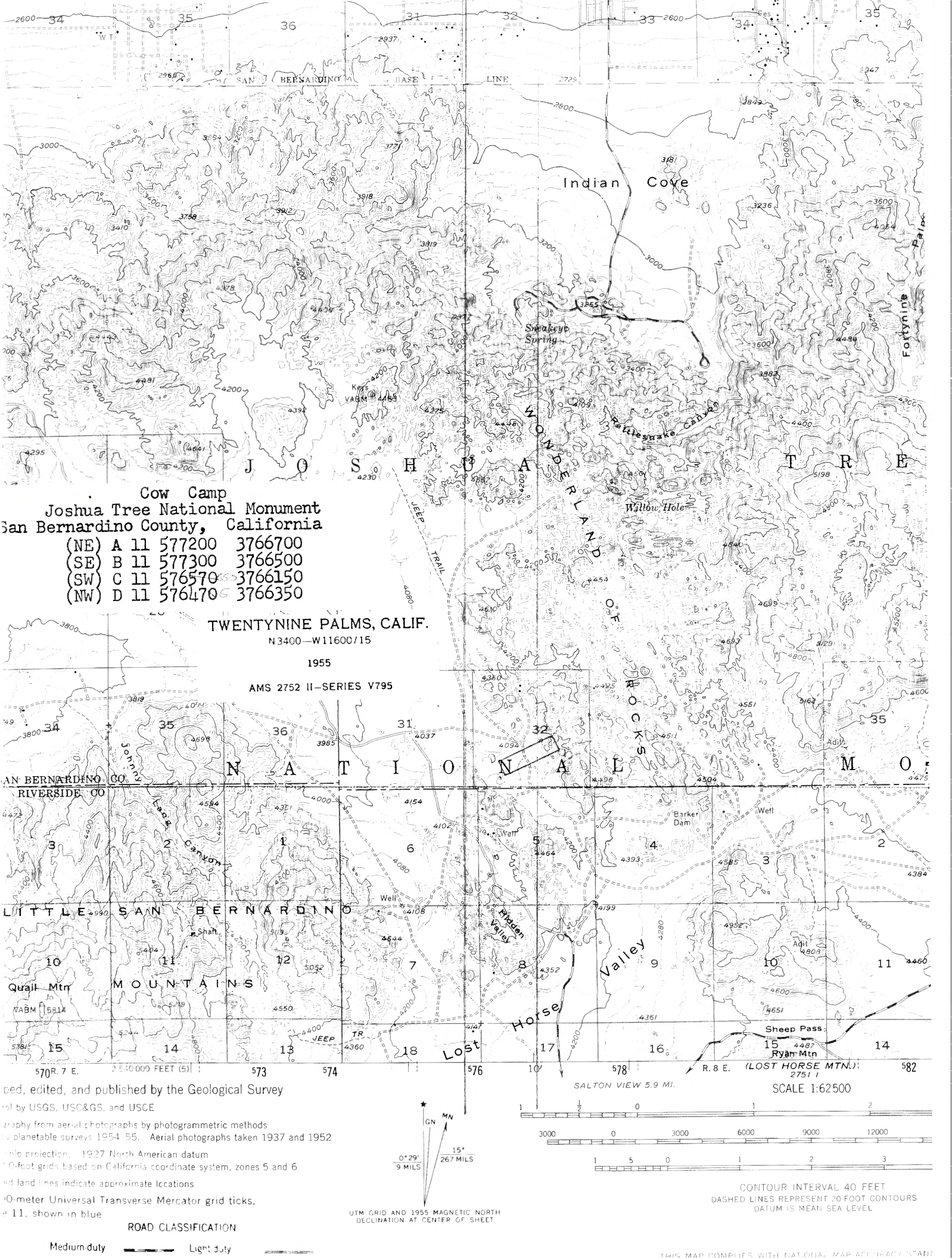
4 IDENTIFICATION

DESCRIBE VIEW, DIRECTION, ETC. IF DISTRICT, GIVE BUILDING NAME & STREET

PHOTO NO

373

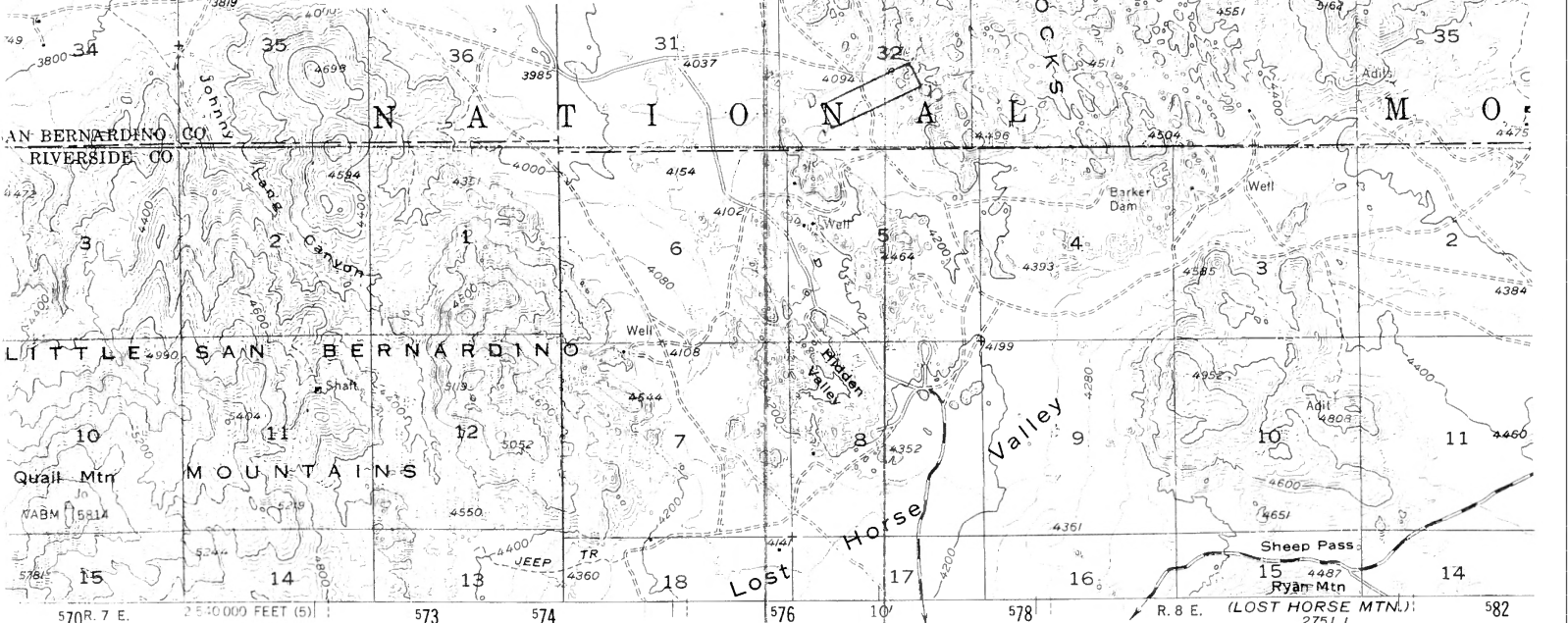
Part of dam erected by William F. Keys at Cow Camp



Cow Camp
 Joshua Tree National Monument
 San Bernardino County, California

(NE)	A 11	577200	3766700
(SE)	B 11	577300	3766500
(SW)	C 11	576570	3766150
(NW)	D 11	576470	3766350

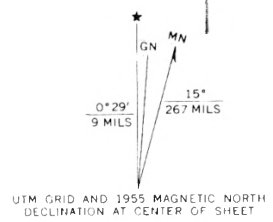
TWENTYNINE PALMS, CALIF.
 N3400—W11600/15
 1955
 AMS 2752 II—SERIES V795



ped, edited, and published by the Geological Survey
 by USGS, USC&GS, and USCE
 graphy from aerial photographs by photogrammetric methods
 v. planetable surveys 1954-55. Aerial photographs taken 1937 and 1952
 ic projection. 1927 North American datum
 0-foot grids based on California coordinate system, zones 5 and 6
 ed land lines indicate approximate locations
 0-meter Universal Transverse Mercator grid ticks,
 e 11, shown in blue

ROAD CLASSIFICATION

Medium duty Light duty



SALTON VIEW 5.9 MI.
 SCALE 1:62500

3000 0 3000 6000 9000 12000

1 5 0 1 2 3

CONTOUR INTERVAL 40 FEET
 DASHED LINES REPRESENT 20 FOOT CONTOURS
 DATUM IS MEAN SEA LEVEL

THIS MAP COMPLIES WITH NATIONAL MAP ACCURACY STANDARDS