

WEIGHT
LIMIT
7
TONS



Saugatuck River Bridge
Westport, CT

HRC Photo, 4/86
Negative filed with Conn.
Hist. Comm., Hartford

Fixed span, east portal
view SW

1



Saugatuck River Bridge
Westport, CT

HRC Photo, 4/86

Negative filed with Conn.
Hist. Comm., Hartford

Fixed span, upper portal
joint, view SE

2



Saugatuck River Bridge
Westport, CT

HRC Photo, 4/86

Negative filed with Conn.

Hist. Comm., Hartford

Fixed span, mid-web

diagonal, with welded repair

view E

3

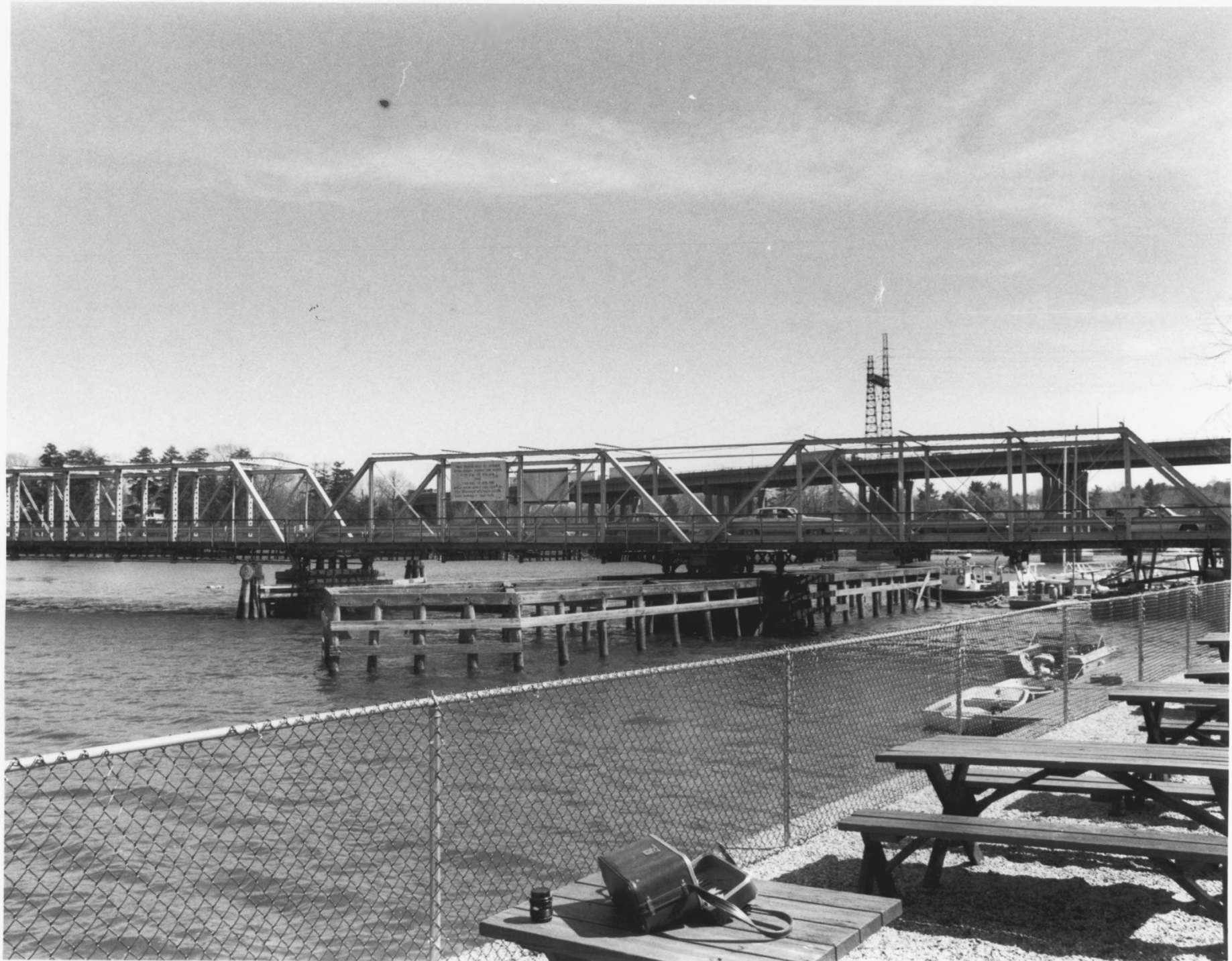


Saugatuck River Bridge
Westport, CT

HRC Photo, 4/86

Negative filed with Conn.
Hist. Comm., Hartford

Fixed span, floor system
view W

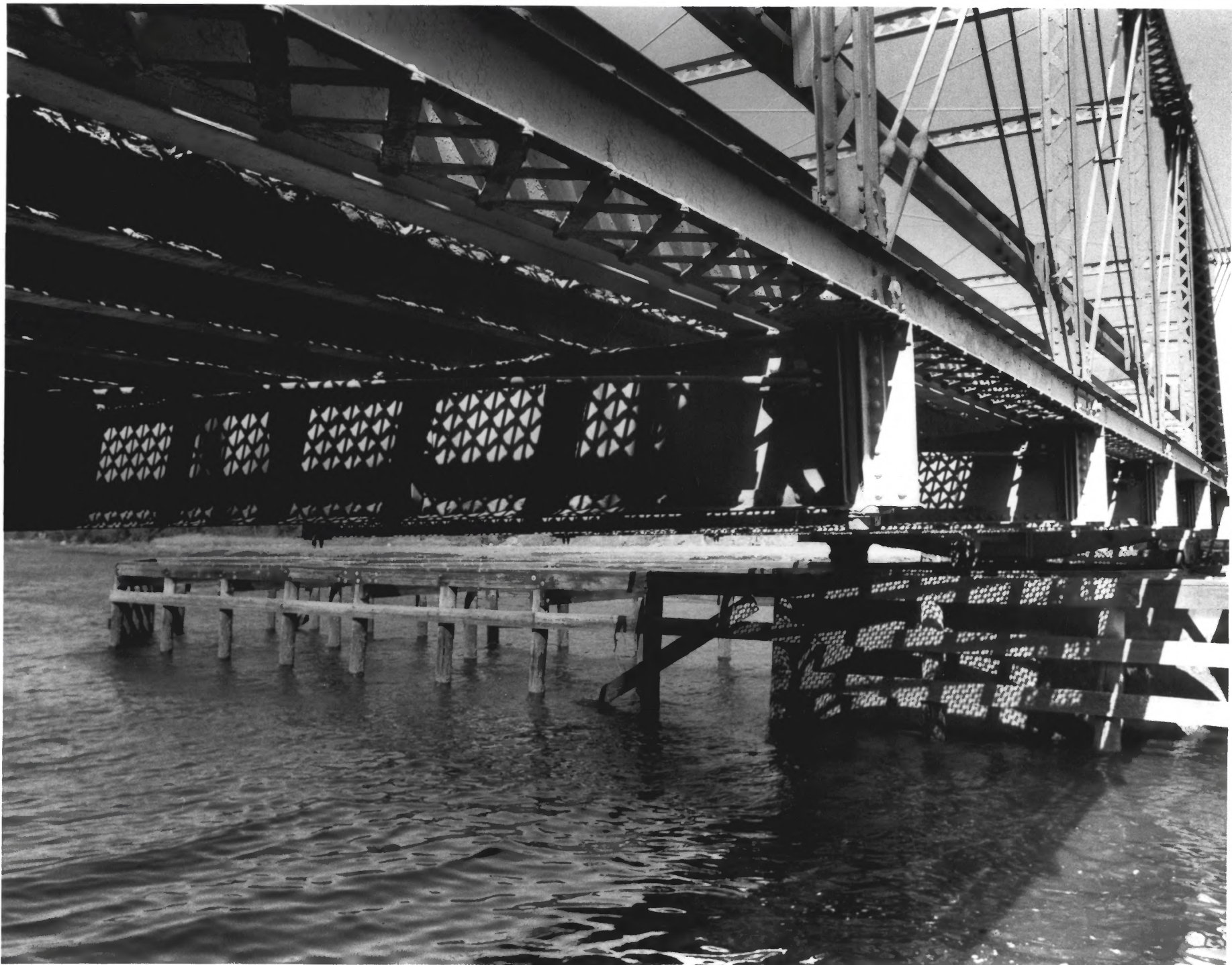


Saugatuck River Bridge
Westport, CT

HRC Photo, 4/86

Negative filed with Conn.
Hist. Comm., Hartford

Side view of both spans
view SE



Saugatuck River Bridge
Westport, CT

HRC Photo, 4/86

Negative filed with Conn.
Hist. Comm., Hartford

Swing span, floor system
view NE



Saugatuck River Bridge
Westport, CT

HRC Photo, 4/86
Negative filed with Conn.
Hist. Comm., Hartford

Side view of swing span
view NE



Saugatuck River Bridge
Westport, CT

HRC Photo, 4/86

Negative filed with Conn.
Hist. Comm., Hartford

Swing pier, rollers and
pivot bracing, view NE



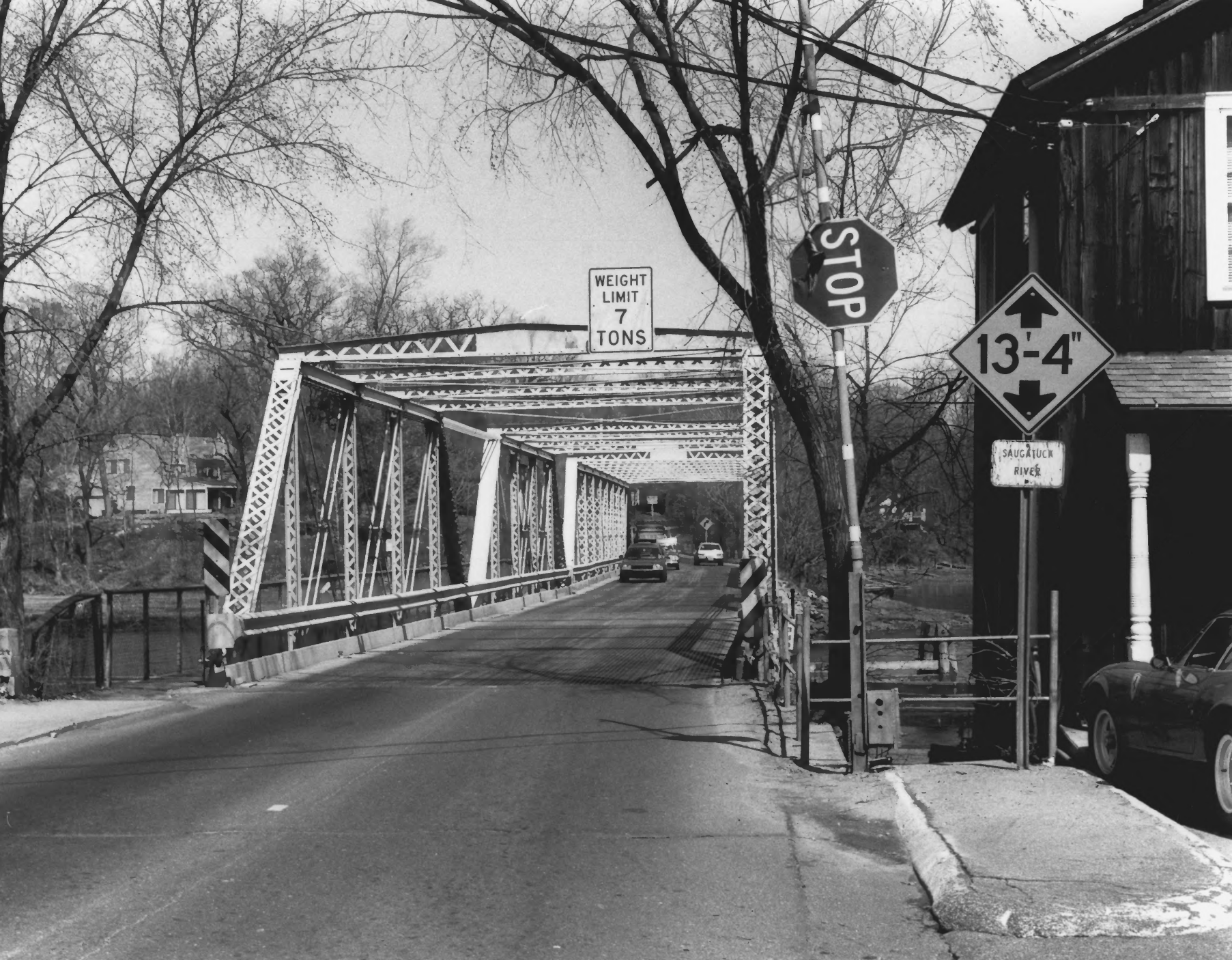
Saugatuck River Bridge
Westport, CT

HRC Photo, 4/86

Negative filed with Conn.
Hist. Comm., Hartford

Swing span, portal of east
truss and central upper
eyebars, view SE

9



WEIGHT
LIMIT
7
TONS

STOP

13'-4"

SAUGATUCK
RIVER

Saugatuck River Bridge
Westport, CT

HRC Photo, 4/86

Negative filed with Conn.
Hist. Comm., Hartford

Swing span, west portal
view E