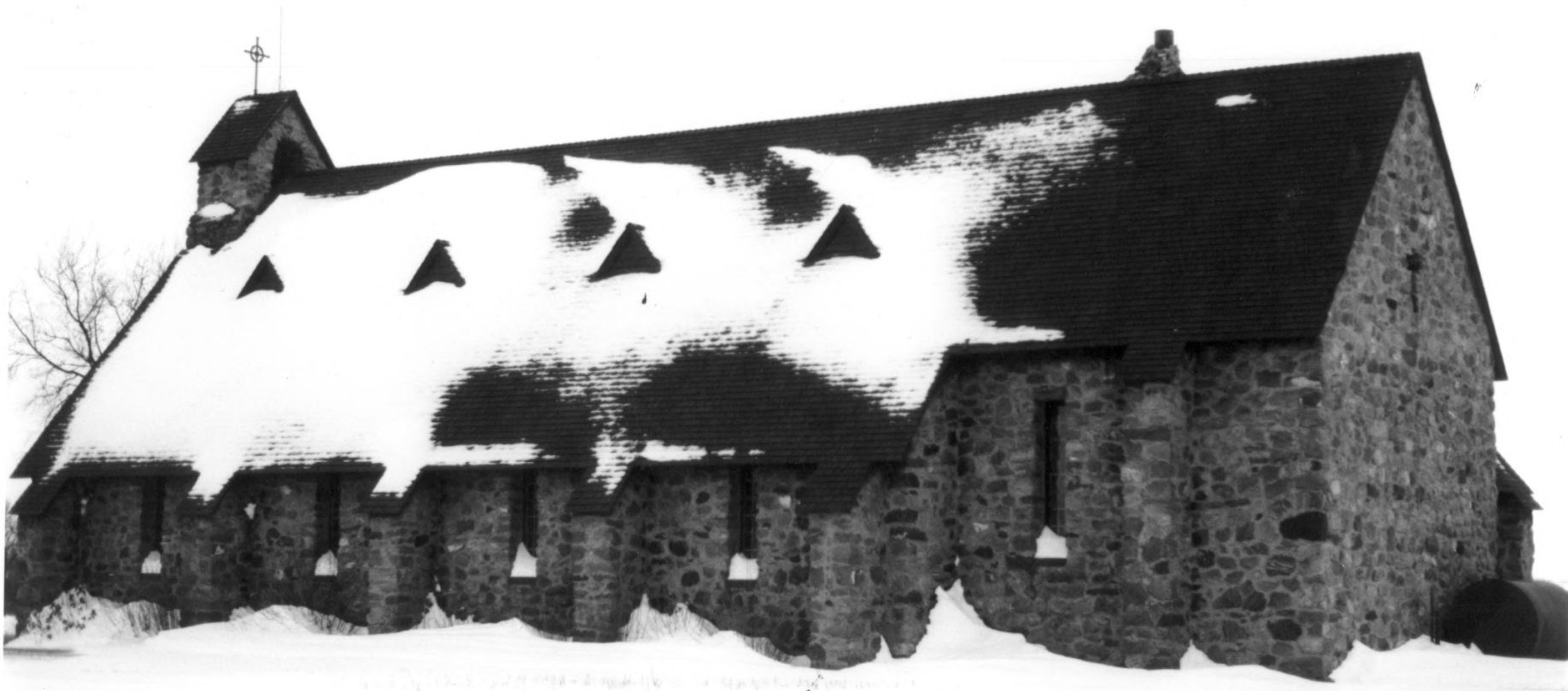




- 1) ST. CATHERINE CHURCH
- 2) WALSH COUNTY, ND
- 3) BLAIN FANDRICH
- 4) 11/19/98
- 5) ND STATE HISTORICAL SOCIETY
- 6) VIEW TO THE SOUTHWEST
- 7) #1



- 1) ST. CATHERINE CHURCH
- 2) WALSH COUNTY, ND
- 3) BLAIN FARRICH
- 4) 11/19/98
- 5) ND STATE HISTORICAL SOCIETY
- 6) VIEW TO THE NORTHEAST
- 7) #2



- 1) LARGE GROTTTO¹ AT ST. CATHERINE CHURCH
- 2) WALSH COUNTY, ND
- 3) BLAIN FANDRICH
- 4) 11/19/98
- 5) ND STATE HISTORICAL SOCIETY
- 6) VIEW TO THE SOUTH
- 7) #3



- 1) GROTTO # 2 AT ST. CATHERINE CHURCH
- 2) WALSH COUNTY, ND
- 3) BLAIN FANDRICH
- 4) 11/19/98
- 5) ND STATE HISTORICAL SOCIETY
- 6) VIEW TO THE EAST
- 7) #4



- 1) GROTTO # 3 AT ST. CATHERINE CHURCH
- 2) WALSH COUNTY, ND
- 3) BLAIN FANDRICH
- 4) 11/19/98
- 5) ND STATE HISTORICAL SOCIETY
- 6) VIEW TO THE WEST
- 7) # 5



- 1) GROTTO #4 AT ST. CATHERINE CHURCH
- 2) WALSH COUNTY, ND
- 3) BLAIN FANDRICH
- 4) 11/19/98
- 5) ND HISTORICAL SOCIETY
- 6) VIEW TO THE WEST
- 7) #6



- 1) ST. CATHERINE CHURCH (ORIGINAL INTERIOR)
- 2) WALSH COUNTY, ND
- 3) N/A
- 4) 1938 ?
- 5) ST. CATHERINE CHURCH
- 6) VIEW TO THE SOUTH
- 7) # 7



ST. MARTIN'S

- 1) ST. CATHERINE CHURCH
- 2) WALSH COUNTY, ND
- 3) N/A
- 4) 1938 ?
- 5) ST. CATHERINE CHURCH
- 6) VIEW TO THE SOUTHWEST
- 7) # 8