



United States Department of the Interior  
National Park Service

National Register of Historic Places  
Registration Form

This form is for use in nominating or requesting determinations for individual properties and districts. See instructions in How to Complete the National Register of Historic Places Registration Form (National Register Bulletin 16A). Complete each item by marking "x" in the appropriate box or by entering the information requested. If any item does not apply to the property being documented, enter "N/A" for "not applicable." For functions, architectural classification, materials, and areas of significance, enter only categories and subcategories from the instructions. Place additional entries and narrative items on continuation sheets (NPS Form 10-900a). Use a typewriter, word processor, or computer, to complete all items.

1. Name of Property

historic name First Parish Burial Ground

other names/site number Bridge Street Cemetery; Old Bridge Street Cemetery; First Parish Burial Yard; Bridge Street Burial Yard

2. Location

street & number 122-R Centennial Avenue N/A not for publication

city or town Gloucester N/A vicinity

state Massachusetts code MA county Essex code 009 zip code 01930

3. State/Federal Agency Certification

As the designated authority under the National Historic Preservation Act of 1986, as amended, I hereby certify that this  nomination  request for determination of eligibility meets the documentation standards for registering properties in the National Register of Historic Places and meets the procedural and professional requirements set forth in 36 CFR Part 60. In my opinion, the property  meets  does not meet the National Register Criteria. I recommend that this property be considered significant  nationally  statewide  locally. ( See continuation sheet for additional comments.)

Brona Simon January 5, 2010  
Signature of certifying official/Title Brona Simon, State Historic Preservation Officer Date  
Massachusetts Historical Commission

State or Federal agency and bureau

In my opinion, the property  meets  does not meet the National Register criteria. ( See continuation sheet for additional Comments.)

Signature of certifying official/Title \_\_\_\_\_ Date \_\_\_\_\_

State or Federal agency and bureau

4. National Park Service Certification

I, hereby certify that this property is:

- entered in the National Register  See continuation sheet.
- determined eligible for the National Register  See continuation sheet.
- determined not eligible for the National Register
- removed from the National Register
- other (explain): \_\_\_\_\_

Signature of the Keeper

Patrick Andrews

Date of Action

2/26/2010

First Parish Burial Ground  
Name of Property

Essex, Massachusetts  
County and State

**5. Classification**

**Ownership of Property**

(Check as many boxes as apply)

- private
- public-local
- public-State
- public-Federal

(Check only one box)

- building(s)
- district
- site
- structure
- object

**Number of Resources within Property**

(Do not include previously listed resources in the count.)

Contributing	Noncontributing	
0	0	building
2	0	sites
5	0	structures
31	0	objects
38	0	Total

**Name of related multiple property listing**

(Enter "N/A" if property is not part of a multiple property listing.)

N/A

**Number of contributing resources previously listed in the National Register**

NONE

**6. Function or Use**

**Historic Functions**

(Enter categories from instructions)

FUNERARY: Cemetery

**Current Functions**

(Enter categories from instructions)

FUNERARY: Cemetery

**7. Description**

**Architectural Classification**

(Enter categories from instructions)

N/A

**Materials**

(Enter categories from instructions)

foundation \_\_\_\_\_

walls \_\_\_\_\_

roof \_\_\_\_\_

other \_\_\_\_\_

**Narrative Description**

(Describe the historic and current condition of the property on one or more continuation sheets.)

(See attached continuation sheets)

United States Department of the Interior  
National Park Service

## National Register of Historic Places Continuation Sheet

Section Number 7 Page 1

First Parish Burial Ground  
Gloucester, Essex County, MA

### NARRATIVE DESCRIPTION

Of Gloucester's twelve public and twelve private cemeteries and burial grounds, the First Parish Burial Ground is the oldest, established in 1644. Located near both Gloucester Harbor and the Annisquam River, it once stood at the heart of Gloucester's original permanent settlement. As the burying ground of Gloucester's founders, First Parish served as the settlement's only burial place for nearly 80 years. Over the last several decades, the City of Gloucester has neglected to care properly for the burial ground and, as a result, many of its most important features have deteriorated or have been lost altogether. Nevertheless, it retains a high degree of integrity in its location, setting, design, materials, workmanship, feeling, and association, and meets National Register Criteria A and C at the local level, and criteria consideration D for its role as a cemetery. It covers 2.5 acres and includes many distinctive monuments and gravestones, many reflecting the work of local artisans and marking the interments of people associated with the earliest history of Gloucester.

### Location & Setting

The First Parish Burial Ground lies on the western side of the center of Gloucester, near the mouth of the Annisquam River, at the Western Harbor section of Gloucester Harbor. The river stands approximately one-quarter mile to the west of the burial ground, and the harbor lies approximately one-half mile to the south. Visitors traveling eastward on Route 128 cross over the Annisquam River, proceed to a rotary, and bear to the right onto Washington Street. They follow Washington Street southeastward for one-quarter mile to Centennial Avenue. After turning right on Centennial Avenue, visitors cross over the Massachusetts Bay Transportation Authority (MBTA) railroad tracks, and see the entrance to the burial ground on Centennial Avenue's right-hand (west) side.

Overall, the burial ground is secluded from the surrounding neighborhood and adjacent properties. Much of its 2.5 acres stand 200 feet from the street, and densely built two- and three-story residences along Centennial Avenue block views of the burial ground from the street. To the south is an active recreation area, with baseball diamonds and a playground, and the MBTA tracks run along the north. To the west is the Clark (or New Clark) Cemetery (ca. 1840-1860). Each of First Parish Burial Ground's edges is lined with hedgerows of deciduous trees and understory, obscuring it further from outside view.

### Site & Layout

#### *Boundaries & Entrances*

The First Parish Burial Ground is roughly hexagonal in shape, with a narrow extension of land (200 feet x 35 feet) connecting from the hexagon to the east edge (Centennial Avenue). Much of the burial ground boundary, including the extension, is delineated by a dry-laid stone wall. On the north side, this wall is made of large stones, and partially serves as a retaining structure, supporting the side and rear yard of the abutting residential property. On the south, the wall is freestanding, and extends along the eastern half of the southern boundary only. A five-foot high chain link fence rims the south edge where

(continued)

United States Department of the Interior  
National Park Service

## National Register of Historic Places Continuation Sheet

Section Number 7 Page 2

First Parish Burial Ground  
Gloucester, Essex County, MA

the burial ground abuts rear yards of homes along Centennial Avenue, and where the burial ground borders the recreation field. Clusters of Norway maple trees obscure much of the fence. A dry-laid stone wall separates the burial ground's western edge from the adjacent Clark Cemetery. This small 19<sup>th</sup>-century burial ground is severely overgrown with trees, understory, and groundcover, and the vegetation completely masks the gravesites. The Clark Cemetery is not visible from inside the First Parish Burial Ground during the warmer months. The overall condition of the perimeter stone wall is poor. Many stones have dislodged and/or fallen, and vines and suckering trees have sprouted throughout.

Visitors to the burial ground enter through a wall and gate spanning the 35' edge along Centennial Avenue (Photo #1). The wall is constructed of cut gray granite blocks, stacked in three courses, secured by mortar and standing approximately four feet high. A pair of twelve-inch square, cut-granite posts flank the opening in the wall. These posts stand approximately 4½-feet tall and have a rock (or rusticated) finish. A simple, single-leaf, wrought-iron gate secures the entrance. This gate is fastened to the left (south) post with iron hardware and consists of pointed-topped pickets spaced approximately 6 inches apart and balanced with a top and bottom rail of flat iron. The gate is painted black. An additional entrance, marked by a break in the stone wall flanked by four-foot cut-granite posts, stands at the center of the western edge, allowing passage to the Clark Cemetery. The dense growth of trees and understory make this western entrance difficult to locate during the warmer months of the year.

### *Topography & Landscape Features*

Topography across the burial ground ranges from flat to gently rolling. At the east end just inside the entrance, the land slopes gradually downward to a low point and then climbs slightly upward, reaching a high point near the center of the hexagonal area. From the high point, grades roll downward, with lower points along the south, west, and north sides. Because grasses and other plants have grown up year after year without being cut, the landform feels very uneven and cassock-like underfoot. The burial ground contains no visible roadways or cart paths. An overgrown footpath leads from the Centennial Avenue entrance westward and winds around the base of the high point. This path is clearest on the northern side of the high point, with the southern side quite overgrown. Several other rambling paths appear to weave through the hexagonal area, but these may be routes established and used by animals.

Maintenance of the burial ground has been very poor, and as a result, vegetation has been allowed to grow uncontrolled, covering and, in some cases, unearthing gravestones. Plant materials include grasses, meadow plants (such as pasture rose and mustard), and invasive vines, such as poison ivy and oriental bittersweet. Sumac and black cherry have also sprouted, suggesting the property is undergoing reforestation (successional growth). A significant colony of Japanese knotweed has taken hold near the southeast corner, and Norway maples have volunteered along the southern, western, and northern edges. Despite this growth of undesirable plants, the burial ground retains two significant tree plantings. Near the high point stands a mature oak (Photo #2), providing the only means of shade in the hexagonal area. At the southwest corner, amid the Japanese knotweed, is a large larch (tamarack).

(continued)

United States Department of the Interior  
National Park Service

## National Register of Historic Places Continuation Sheet

Section Number 7 Page 3

First Parish Burial Ground  
Gloucester, Essex County, MA

### Monuments & Markers

According to an inventory completed in 1996 as part of the First Parish Burial Ground Project, the site contains approximately 650 markers. Yet because much of the landscape is overgrown with tall grasses and many of the stones have been broken, this number is difficult to verify. The layout of the visible graves does not adhere to an organized, planned pattern. Most of the gravestones stand singly, and while many are oriented with the burial facing east (inscription on the west side), several are oriented southeast and northeast. The burials appear to be concentrated nearer the center of the hexagonal area; however, both the 1996 inventory and a report completed in 1895 by William Dolliver indicate that graves exist throughout the 2.5 acres. Also, James Babson refers to "accidental exhumations" in his History of the Town of Gloucester, Cape Ann, which suggests that graves may have been removed and/or relocated over many years.

The earliest markers date to the 1700s and are tympanum style tablets made of slate, schist, and sandstone. Carvings on these stones depict winged skulls, as exemplified by the slate markers of Zerubbable Allen (d. 1749, Photo #6), Jeremiah Allen (d. 1767, Photo #5), and Elizabeth Plummer (d. 1781); and deaths heads, as seen on the stone of Daniel Rogers (d. 1800). Other motifs include winged cherub faces as seen on the slate stones of Hannah Stacey (d. 1771), Elizabeth Hough (d. 1796), John Low (d. 1796), and Sarah Allen (d. 1772). Many 18<sup>th</sup>-century and early 19<sup>th</sup>-century stones display the willow and urn motif, including the slate markers of Elizabeth Gorham Rogers (d. 1769), Sally Smith (d. 1795), and Susan Rogers (d. 1796). The stone of Solomon Parsons (d. 1807) shows an urn and willow motif surrounded by an architectural composition of columns supporting a decorative frieze. The schist stone of William Warner (d. 1745) includes the head of a wig-donned man, flanked by wings. The William Hales (d. 1790) grave is marked with a slate tablet bearing images of the sun, moon, and the Masonic seal. The work of gravestone carver John Homer, identified by his use of skull and cross-bone and willow and urn imagery, appears on some of the stones, including that of Lydia Porter. Carvings of the Lamson shop, typified by the use of fruit scrolls on head and footstones, is visible on other stones.

Nineteenth-century stones are made of marble and depict willow and urn motifs, upward-pointing hands, Christian crosses, and lambs. Examples of these include the marble tablets marking the graves of Sarah Coas (d. 1856), William Coas (d. 1865), Edward Grady (d. 1860), and Bathsheba Roberts (d. 1832). Aside from simple inscriptions, the stones of Sarah and William Coas are completely unadorned. By contrast, the stones of Edward Grady and Bathsheba Roberts contain Victorian-style imagery. Grady's stone displays the rose motif. Bathsheba Roberts's stone bears a broken chain in bas relief, with the phrase "parted below, united above." Other marble tablets were cut into decorative shapes, such as those marking the graves of the Davis family in the southwest corner (Photo #3). While the Davis stones' motifs and inscriptions are indecipherable, each stone's tympanum consists of a rounded top flanked by concave flared sides. The tallest monument commemorates the Adams family. It is a marble stele consisting of a two-part base and single shaft, located near the burial ground's highest point and near the oak tree (Photo #2).

First Parish Burial Ground contains some family plots and underground tombs. Examples include the Rogers family plot and the Sargent tomb. The Rogers plot is surrounded by a rounded pink-granite

(continued)

United States Department of the Interior  
National Park Service

## National Register of Historic Places Continuation Sheet

Section Number 7 Page 4

First Parish Burial Ground  
Gloucester, Essex County, MA

coping and contains four graves, marked by slate headstones and matching footstones. The Sargent tomb, covered by a large inscribed granite slab, contains the remains of approximately nineteen members of the Sargent family.

The burial ground also contains other tombs. The box tomb of Captain Edward Gibaut (d. 1803) is constructed of a thick slate slab resting on large granite blocks, with an inscription written by Salem diarist William Bentley and carved by Levi Maxcy. The box tomb of Reverend John White (d. 1760, Photo #4) is made of brick and topped with a thick sandstone slab.

### Current Condition

As discussed throughout this section, the First Parish Burial Ground's condition is seriously deteriorated. In addition to the lack of general landscape maintenance, including regular mowing, removal of suckering trees and vines, and control of invasive plants, the burial ground has suffered from repeated vandalism. Slate stone fragments lie scattered throughout, and many of these have been gathered up, removed from their original locations, and placed on other markers or in other visible sites. Other markers have broken, are leaning, or have fallen altogether. Because of this degraded state, the burial ground has attracted individuals engaging in inappropriate behavior, such as spreading litter.

### Archaeological Description

While no pre-Contact period Native American sites are known on the burial ground property, it is possible that sites are present. Two Native sites are located in the general area (within one mile). Environmental characteristics of the nominated property represent locational criteria (slope, soil drainage, proximity to wetlands) that are favorable for the presence of Native sites. The burial ground occupies well-drained, level to moderately sloping topography in close proximity to wetlands. Soils are sandy and stony, with rocks from one to three feet in diameter on the surface formed in glacial till. An unnamed pond and the Annisquam River lie within 1,000 feet west of the burial ground. Gloucester Harbor lies within one-half mile to the south. The entire area lies within the North Coastal drainage. In spite of the information presented above, the potential for locating significant pre-Contact period Native American resources in the burial ground is low. Three centuries of use and excavation of over 600 graves would have destroyed any pre-Contact Period Native American resources present in the burial ground.

A high potential exists for locating historic archaeological resources within and near the boundaries of the First Parish Burial Ground. Additional documentary research, combined with archaeological survey and testing, may locate structural remains from barns, stables, and other structures associated with the use of the burial ground. Structural evidence might also exist from outbuildings associated with cemetery maintenance during its earlier history. Ongoing neglect characterizes the city's care of the cemetery during its recent history.

(continued)

United States Department of the Interior  
National Park Service

## National Register of Historic Places Continuation Sheet

Section Number 7 Page 5

**First Parish Burial Ground  
Gloucester, Essex County, MA**

Additional historical research, combined with archaeological survey and testing, can also help locate unmarked graves and grave markers, and document associations between existing gravestones and actual graves. Known and unmarked graves may represent the most common archaeological resource at the burial ground. While the earliest markers at the burial ground currently date to the 1700s, burials may date as early as 1644, and the establishment of the burial ground. Due to ongoing neglect, many gravestones are either missing or obscured by vegetation. Many broken markers have also been gathered up, removed from their original locations, and placed on new sites. None of the early settlers reportedly had gravestones, and their place of burial is unknown. Accidental exhumations have also been reported as a common occurrence for many years. Single graves and multiple burials are also reported. Burials that once stood near the northern edge of the burial ground may have also been moved or removed during construction of the railroad after 1847. Individual graves may include skeletal remains in addition to clothing and other personal items interred with each individual. Funerary objects, including coffin remains and artifacts associated with the initial internment(s) and later memorials, may also be present with individual or groups of graves. A grave shaft discernable in the soil stratigraphy should be present with individual and multiple interments. Post molds may also be present from older fence lines that predate the stonewall that surrounds most of the burial ground. The stonewall was authorized for construction by the town in ca. 1703. Archaeological testing may also identify head and foot stones that are overgrown and presently not visible on the surface.

(end)

First Parish Burial Ground  
Name of Property

### 8. Statement of Significance

#### Applicable National Register Criteria

(Mark "x" in one or more boxes for the criteria qualifying the property for National Register listing.)

- A** Property is associated with events that have made a significant contribution to the broad patterns of our history.
- B** Property is associated with the lives of persons significant in our past.
- C** Property embodies the distinctive characteristics of a type, period, or method of construction or represents the work of a master, or possesses high artistic values, or represents a significant and distinguishable entity whose components lack individual distinction.
- D** Property has yielded, or is likely to yield, information important in prehistory or history.

#### Criteria Considerations

(Mark "x" in all the boxes that apply.)

Property is:

- A** owned by religious institution or used for religious purposes.
- B** removed from its original location.
- C** a birthplace or grave.
- D** a cemetery.
- E** a reconstructed building, object, or structure.
- F** a commemorative property.
- G** less than 50 years of age or achieved significance within the past 50 years.

#### Narrative Statement of Significance

(Explain the significance of the property on one or more continuation sheets.)

### 9. Major Bibliographical References

(Cite the books, articles, and other sources used in preparing this form on one or more continuation sheets.)

#### Previous documentation on file (NPS):

- preliminary determination of individual listing (36 CFR 67) has been requested
- previously listed in the National Register
- previously determined eligible by the National Register
- designated a National Historic Landmark
- recorded by Historic American Buildings Survey # \_\_\_\_\_
- recorded by Historic American Engineering Record # \_\_\_\_\_

Essex, Massachusetts  
County and State

#### Areas of Significance

(Enter categories from instructions)

Art \_\_\_\_\_  
Exploration/Settlement \_\_\_\_\_  
Landscape Architecture \_\_\_\_\_  
Maritime History \_\_\_\_\_  
Social History \_\_\_\_\_

#### Period of Significance

1644-1925 \_\_\_\_\_

#### Significant Dates

1644 - established      1925 - final burial \_\_\_\_\_

1667 - reached present size \_\_\_\_\_

1847 - entrance created \_\_\_\_\_

#### Significant Person

(Complete if Criterion B is marked above)

N/A \_\_\_\_\_

#### Cultural Affiliation

N/A \_\_\_\_\_

#### Architect/Builder

N/A \_\_\_\_\_

#### Primary location of additional data:

- State Historic Preservation Office
- Other State agency
- Federal agency
- Local government
- University
- Other

Name of repository:

Gloucester City Archives \_\_\_\_\_

United States Department of the Interior  
National Park Service

## National Register of Historic Places Continuation Sheet

Section Number 8 Page 1

First Parish Burial Ground  
Gloucester, Essex County, MA

### NARRATIVE STATEMENT OF SIGNIFICANCE

The First Parish Burial Ground, located on Centennial Avenue in Gloucester, MA, possesses integrity of location, design, setting, materials, workmanship, and association, and meets National Register Criteria A and C on the local level. Associated with the broad patterns of Gloucester's 17<sup>th</sup>, 18<sup>th</sup>, and 19<sup>th</sup>-century history, displaying many examples of 18<sup>th</sup>-century regional gravestone carvers, and reflecting the layout of a Colonial-era burying ground, the First Parish Burial Ground also qualifies under Criterion Consideration D.

Under Criterion A, the First Parish Burial Ground occupies an important place in the history of the town as the oldest known site of interment. Established in 1644, it contains the graves of Gloucester's first settlers, landowners, ministers, and builders, as well as those of succeeding generations of these early families. Many graves reflect Gloucester's long involvement in the maritime trades, including shipbuilding and commercial fishing. The burial ground holds the remains 34 Revolutionary War veterans and six veterans of the Civil War. Known burials at First Parish exceed 600.

Under Criterion C, the First Parish Burial Ground is a significant historical and artistic resource that represents the distinctive characteristics of Massachusetts's earliest Colonial burial grounds. Covering 2.5 acres in the shape of a hexagon, its simple landscape is enclosed on three sides by a dry-laid boulder wall. Graves stand singly and are marked with tympanum-style tablets constructed of slate and schist. Many of the 18<sup>th</sup>-century stones display the work of well-known regional gravestone carvers working in Boston and the Essex County. Some of the stones have been photographed and included in publications about early New England gravestone carvers and their work.

The following statement of significance refers to many graves identified during the 1987-1995 First Parish Burial Ground Project. Today, due to the ongoing neglect of the burial ground, many of the gravestones are either missing or possibly obscured by overgrown vegetation. Those which remain visible are indicated with an accompanying data sheet (DS) number.

### Settlement Period (1623-1675)

In 1623, the Dorchester Company sent fourteen men from England to the Cape Ann to establish a fishing settlement. The only other English in New England at the time were living in small settlements scattered along the coast between Maine and Plymouth. While the fishing enterprise did not succeed, English immigrants continued to live in the area, with more arriving between 1623 and 1642. In 1642, the first assignment of titles to the settlers occurred, and the Town of Gloucester was officially incorporated, named for Gloucester, England, from where many settlers had come. The population included 82 men and their families.

Settlers placed the center of their town about one mile from Gloucester Harbor and near the banks of the Annisquam River, between the present day Centennial Avenue and Route 128 rotary. This location provided them access via the river to both Gloucester Harbor (to the south) and Ipswich Bay (to the north). They established a green, built a meetinghouse, opened a tavern, and later erected a school. The economy centered on subsistence farming and fishing, as well as timbering and lumbering with wood being shipped south to Boston. Wine Brook, which originated in the upland area to the east of the green and flowed westward into the Mill (and eventually Annisquam) River, provided power for small grist, saw and fulling mills.

(continued)

United States Department of the Interior  
National Park Service

## National Register of Historic Places Continuation Sheet

Section Number 8 Page 2

First Parish Burial Ground  
Gloucester, Essex County, MA

In February of 1644, the Gloucester selectmen issued an order "that at the end of these lots...and the old meetinghouse place, shall be half an acre laid out for a common burial-place." The burial ground was established near the center of the settlement, near the meetinghouse, and adjoining the lots of several settlers, including men named Kent, Skillings, and Blynman, the first minister. Historical records indicate that a path led from the meetinghouse (located at the southwest corner of the present day intersection of Centennial Avenue and Washington Street) to the burial ground, and it was known as "Burying Ground Lane." In 1667, Abram Robbins gave two acres next to the burial ground adjacent to the southwest side. This brought the total acreage to 2.5, a size that remains to this day. James Babson, author of the History of the Town of Gloucester, Cape Ann, stated that none of the settlers had gravestones and that the place of their burial is not known, and he posits, "It is not improbable that most of the dust of Death's early harvests here had been scattered to the winds, in the accidental exhumations which have been of frequent occurrence for many years."

While it is not definitively known whether the early settlers were interred at First Parish, it is clear that the burial ground holds the graves of many generations of these settlers' descendents. Included are the wives, sons, daughters, grandsons, and granddaughters of John Coit, John Collins, Robert Elwell, William Haskell, Abraham Robinson, and Morris Somes and many others. Isabel Babson (d. 1661, DS 8) is commemorated at the burial ground. Mrs. Babson, a widow, came to Gloucester from Salem in 1637 with her son, James Babson, and served as the first midwife on Cape Ann. A slate replacement stone was erected in the 20<sup>th</sup> century by a distant descendent of Mrs. Babson (discussed later in this section).

### Colonial Period (1675-1775)

The civic, social, and religious center of Gloucester remained around the green until the early 1700s, with the meetinghouse serving as the only house of worship on Cape Ann. Beginning around 1700, the maritime industries began to expand in Gloucester. The abundance of timber gave rise to a boat-building industry, and by 1706, at least thirty sloops were carrying wood to other points on Cape Ann and to Boston. The success of the shipbuilding industry and an increased demand for fish spurred large-scale commercial fishing. Beginning around 1700, Gloucester's fishermen began making trips offshore to the Grand Banks, a 36,000 square mile fishing ground, 90 miles to the southeast of Newfoundland. The waters at the Grand Banks were 20 to 150 fathoms, making an ideal habitat for cod. Fishing expeditions often lasted two to three months, as mariners did not return until their vessels were full. The work was often perilous, and many boats and their crews were lost. In March of 1766, nineteen fishing boats ventured out from Gloucester to the Grand Banks, and encountered a heavy storm. Nine never returned.

As fishing and shipbuilding increased, Gloucester's population began to migrate and cluster nearer Gloucester Harbor (to the south and east of the original settlement). By 1704, the population of Cape Ann had grown to 700, and by 1755 it quadrupled to 2,800. Beginning in 1716, new parishes began forming in the far reaches of Cape Ann, a result of this population growth. The first was West Parish (also known as Second Parish), which broke off from the First Parish in 1716. Prior to doing this, they established their own burying ground (1698) on Thompson Street. Residents of Annisquam, the north part of Cape Ann, established the Third Parish in 1728, and with it built the Bay View or Third Parish Burying Ground (ca. 1728). A Fourth Parish formed nearer the harbor and, when officially established,

(continued)

United States Department of the Interior  
National Park Service

## National Register of Historic Places Continuation Sheet

Section Number 8 Page 3

First Parish Burial Ground  
Gloucester, Essex County, MA

included the harbor residents as well as residents of the southern and eastern ends of the First Parish (the First Parish remained, but included only residents on the northern end of the original parish). While the First Parish Burial Ground continued to serve residents in the First and Fourth Parishes, it was no longer the only burial site on Cape Ann.

In 1703, town records indicate that inhabitants agreed that the First Parish Burial Ground's perimeter be fenced with a stone wall. The records reiterate the demand that all males over sixteen be required to take part in the fencing project, and that a fine of two shillings per day would be levied on those who did not participate. The records suggest that some or all of the dry-laid stone wall surrounding the burial ground may date to this period.

First Parish Burial Ground holds the remains of many individuals associated with the Colonial period on Cape Ann, individuals who helped shape the community from a subsistence-based settlement into a thriving center of maritime industry. Many Colonial period residents operated successful businesses and also served prominently in town governmental and/or church affairs. Thomas Riggs (d. 1736) became Gloucester's first schoolmaster, holding classes in the First Parish meetinghouse beginning in 1698. Joseph Allen (d. 1724) owned land near the meetinghouse; was Gloucester's first blacksmith, shoeing oxen and horses, repairing carts and tools; and served as a town selectman. Honorable Peter Coffin (d. 1796, DS 31) owned and farmed 500 acres of land and also served as selectman, representative, and senator, and was principal acting magistrate of Gloucester for many years. Nathaniel Coit (d. 1743) served as both a selectman and representative. James Parsons (d. 1733) was a church elder, town clerk, and representative. Others devoted their energies largely to maritime endeavors. Nathaniel Ellery (d. 1761, DS 32) was a shipwright. John Harraden (d. 1724) was a mariner who piloted the ship *Montague* in an expedition against Canada in 1711. William Sargent, 2<sup>nd</sup> (d. before 1707) owned a sloop and engaged in coasting, and is believed to have died at sea.

Other persons of particular importance to Colonial-era Gloucester include two of the early First Parish ministers, the Reverend John White (1678-1760, DS 30) and the Reverend Samuel Chandler (1713-1775, DS 33), both interred at First Parish. White was born in Watertown and graduated from Harvard College in 1698. He was called to Gloucester in 1702 and served the First Parish until 1750. Samuel Chandler replaced White. Chandler was born in Andover and educated at Harvard College, and he became pastor of the First Parish Church in 1751. Rev. Chandler kept a diary that detailed daily life in Gloucester from about 1751 to 1765, and recorded births, marriages, and deaths, and also detailed some of the tragedies he experienced in his own life. Chandler's diary is part of the collection of the Phillips Library of the Peabody Essex Museum in Salem.

### Federal Period (1775-1830)

Gloucester suffered during both the Revolutionary War and War of 1812, when British War ships destroyed many fishing vessels and caused a recession in the fishing industry. Nevertheless, Gloucester men participated in both wars, and the First Parish Burial Ground contains the graves of 34 Revolutionary War soldiers, many of whom served in naval operations. Naval commanders included Captain James Babson (d. 1790), commander of *General Mercer*; Philamon Haskell (d. 1792), commander of the *Betsy*; and John Smith (d. 1789), commander of the *Civil Usage*. Other Revolutionary War veterans include General Eliphalet Davis (d. 1804), Major Frederick Gilman (d. 1798), the Reverend Eli Forbes (d. 1804),

(continued)

United States Department of the Interior  
National Park Service

## National Register of Historic Places Continuation Sheet

Section Number 8 Page 4

First Parish Burial Ground  
Gloucester, Essex County, MA

and Nathaniel Warner (d. 1812), who fought in the Battle of Bunker Hill.

Commercial fishing resumed as Gloucester's principal economic activity following the War of 1812, with mackerel and halibut adding to the catch. By 1790, 5,217 people lived on Cape Ann, and by 1820 the population grew to 6,384, with a great number working in maritime and associated trades. Gloucester continued to lose fishermen and vessels, as evidenced by several inscriptions on First Parish Burial Ground gravestones. Alexander Outein was lost in 1799, and his son perished in 1817. John Tucker, son of Captain John and Elizabeth Tucker, died in 1796 on "homeward passage from the West Indies." Captain Miles Barnes, master of the *Industry*, "departed this life with all the ship's company," wrecked off Salt Island in 1796. Two members of the Somes family also died at sea and are commemorated at the burial ground. John Somes (d. 1820, DS 34) drowned, and Gorham Somes (d. 1826, DS 35) was lost overboard on his passage to Sumatra. In 1823, an account of the demise of the *Rebecca* appeared in a local newspaper:

...the vessel went on shore at Norman's Woe. One man only escaped death. His name was Dix. The waves threw him over a large rock, and he managed with great effort to climb up the steep sides of the cliff, and at last saw a light in the window of good Master Moore which the owner had placed there for the benefit of any wanderer on that dark and stormy night...as early as possible [he]...conveyed the sad news of the wreck to the people at the harbor. As soon as the storm abated the harbor people came over and with much effort found the bodies of the drowned men, and took them in boats up to the Harbor, and they were prepared for burial in one of the large storehouses near the fort, and from thence were taken to the First Parish Church where solemn funeral services were held...the funeral train of citizens with the sole survivor as mourner with the nine coffins placed on sleds, passing...through the high snowdrifts on its way to the old burying ground, up in town, where the dead mariners were laid side by side on one grave.

The grave of the *Rebecca* crew lies in the cemetery's northwest corner, adjacent to the railroad tracks, and remains unmarked.

### Industrial & Early Modern Periods (1830-1930)

Gloucester continued to thrive on its maritime industries throughout the 19<sup>th</sup> and early 20<sup>th</sup> centuries. Babson, in his *History of the Town of Gloucester, Cape Ann*, noted that in 1830 the total licensed tonnage (or carrying capacity) in Gloucester was 9,643. By 1859, the total had reached 32,389. Population changes matched these increases, with number of Gloucester residents doubling between 1820 and 1855. Beginning in the 1840s, immigrants began arriving on Cape Ann, with the Irish and Finnish first, followed by Portuguese and Italians. The newcomers worked in the maritime trades and also in the emerging granite quarry industry, which had commenced around 1823. Seafaring remained a dangerous occupation; between 1830 and 1883, a total of 450 vessels and 2,550 men from Gloucester were lost at sea.

(continued)

**United States Department of the Interior**  
National Park Service

**National Register of Historic Places**  
**Continuation Sheet**

Section Number 8 Page 5

**First Parish Burial Ground**  
**Gloucester, Essex County, MA**

In 1847, the railroad was introduced, linking Gloucester to Salem. Prior to this, travelers were limited first to two-horse carriage transportation, begun in 1788, and stagecoaches, operating by 1805. With the rail line, passengers could ride to Salem, and from there catch a train to Boston. Soon after the railroad opened, the summer vacation business began to develop, and by the late 1800s, the tourist industry became a major contributor to the local economy.

The rail line rimmed the northern edge of the First Parish Burial Ground, creating a bold separation between the burial ground and site of Gloucester first permanent settlement along today's Washington Street. It is likely that a new formal entrance was established at this time at the present day Centennial Avenue. The granite entry wall and wrought-iron gates (Photo #1) marking the new entrance were the gifts of Lucius Manlius Sargent between 1836 and 1860. The Clark Cemetery, abutting the First Parish Burial Ground on the west side, was also established at this time, with the Clark's entrance adjacent to the First Parish's Centennial Avenue entrance. The first map of Gloucester showing the two burial grounds and entrances dates to 1884.

As it had in the Revolutionary War and War of 1812, Gloucester participated in Civil War military efforts, sending hundreds of soldiers and sailors. Most of Gloucester's Civil War veterans were buried in other cemeteries, but the First Parish Burial Ground does contain the graves of six. These include Hiram S. Buffington, Alexander Buchanan, John R. Copeland (DS 36), William C. Douglass (DS 37), Samuel Saunders, and Barnabas Young, with all but Buchanan serving in the army. Buffington (d. 1863) served for three years in the 22<sup>nd</sup> Regiment and was wounded in the foot at Newbern, North Carolina, hospitalized and discharged, and died seven days later. Copeland (d. 1862) was member of the 30<sup>th</sup> Regiment. Douglass (d. 1862) was a member of the 2<sup>nd</sup> Massachusetts Calvary. Samuel Saunders was a member of the 32<sup>nd</sup> Regiment and died in 1862 at Harrison's Landing, Virginia, of sunstroke. Barnabas Young was in the 12<sup>th</sup> Regiment and had engagements at Cedar Mountain, Rappahannock Station, Thoroughfare Gap, and Bull Run. He was wounded in the head and hospitalized, and was discharged in 1863. Alexander Buchanan (d. 1863) was a sailor in the Navy.

Burials at the First Parish Burial Ground slowed after 1830, with only 30 burials recorded after 1850. Between 1820 and 1900, many new private and public cemeteries opened, located in different parts of Cape Ann. Oak Grove, a large, private, Victorian-style cemetery established in 1855, developed within a mile of the First Parish Burial Ground on the north side of Washington Street. Demand for burial in Gloucester's smaller burial grounds diminished, with the last burial at First Parish, that of Sarah Warner (DS 39), taking place in 1925.

Between 1895 and 1897, the first attempt at documenting the First Parish Burial Ground was made by William Henry Dolliver. At the request of the town selectmen, who were concerned about the condition of the "ancient burial ground," Dolliver created an inventory of the inscriptions of the graves and made a report. At the time, he was able to read the inscriptions on 602 stones after cleaning them, and noted in his report that many were broken and needing repair. Dolliver's handwritten inventory was placed in the collection of City of Gloucester's archives.

(continued)

United States Department of the Interior  
National Park Service

## National Register of Historic Places Continuation Sheet

Section Number 8 Page 6

First Parish Burial Ground  
Gloucester, Essex County, MA

### 1930 to the Present

Commercial fishing continued in Gloucester through the early part of the 20<sup>th</sup> century, along with the expanding summer tourist industry. By the 1960s Gloucester's fishermen faced competition from foreign fleets, and frozen fish processing emerged as a means of supplanting the waning fishing industry. The construction of MA Route 128 in the 1950s allowed for easier access to Cape Ann by car and helped to promote tourism and work opportunities outside of the City of Gloucester. The local economy, however, nevertheless stagnated, and continues to struggle to this day.

With the lack of burial activity at First Parish Burial Ground came a lengthy era of neglect. Sometime in the 1800s, a trust fund was established in the name of Addison Gilbert for the "care and beautification of the Old Bridge Street Yard." The City of Gloucester accepted the fund upon the death of Mr. Gilbert, and by 1936 the fund's assets totaled \$36,000. By 1964, the fund exceeded \$135,000, but instead of using it to maintain the cemetery, the city drew on the assets to help bolster a general budget shortfall, and shortly thereafter closed out the fund.

In the 1940s, the Works Progress Administration's Veterans' Graves Registration Project documented Gloucester's veteran burials. Workers mapped the First Parish Burial Ground (referred to in the project as the Bridge Street Cemetery) and identified the six graves of Civil War Veterans.

In 1987, the mayor of Gloucester appointed a Cemetery Advisory Committee. The committee focused first on First Parish Burial Ground, because of its age and the fragile condition of its landscape and grave markers. Committee members created a gridded map of the burial ground and over the course of many months, located each remaining visible gravesite. To the map they keyed a spreadsheet of information about each gravesite, including the name of the interred, date of death, and location of stone. Next, the committee restored the gravestone of Rev. Samuel Chandler, the tomb of Rev. John White (Photo #4), and the stone of Benjamin Stacey. The committee disbanded in 1995. In 2003, the Gloucester Historical Commission established a Cemetery Advisory Committee to continue the work of the First Parish Burial Ground Project, and to address the physical condition and maintenance of the city's 24 cemeteries.

### Prominent Individuals Associated with First Parish Burial Ground

The First Parish Burial Ground contains the graves of many generations of Gloucester families and prominent individuals linked to these families. Descendents of Isabel Babson and her son James include several veterans of the Revolution and War of 1812. Two Babson descendents interred elsewhere include John James Babson and Roger Babson. John J. Babson (1809-1886) was a local historian and author of the definitive early history of Gloucester, The History of the Town of Gloucester, Cape Ann. In addition to penning this important work, Babson served as a Gloucester Selectman, and a member of the Massachusetts House of Representatives and Senate. Roger Babson (1875-1969) was a member of the 10<sup>th</sup> generation of Babsons to live in Gloucester. He owned 1,100 acres in the Dogtown area of Gloucester, and eventually gave the land to the City to be used as a public park. A graduate of the Massachusetts Institute of Technology, Roger Babson founded Babson College in 1919 (originally the Babson Institute) in Wellesley, Massachusetts.

(continued)

United States Department of the Interior  
National Park Service

## National Register of Historic Places Continuation Sheet

Section Number 8 Page 7

First Parish Burial Ground  
Gloucester, Essex County, MA

Members of the Sargent family buried at First Parish are descended from William Sargent 2<sup>nd</sup>, who came to Gloucester in 1678. Included are Winthrop Sargent and his wife, Judith Sanders; the parents of Judith Sargent Murray (1751-1820), an early feminist, essayist, playwright, and poet; and Winthrop Sargent, Jr., (1753-1820), one of the first governors of the Mississippi Territory (from 1798 to 1801) and Revolutionary War general. Winthrop Sargent, Jr.'s portrait hangs in a reception room of the United States Department of State. Another Sargent descendent is Epes Sargent (1813-1880), author, editor, and psychical investigator. Perhaps the most well-known descendent of William Sargent 2<sup>nd</sup> was painter John Singer Sargent (1856-1925), one the most prolific American portraitists and landscape artists of the late 19<sup>th</sup> and early 20<sup>th</sup> centuries. Judith Sargent Murray, Winthrop Sargent, Jr., Epes Sargent, and John Singer Sargent are all interred elsewhere.

### Gravestone Carvings & Inscriptions

As noted in Section 7 of this nomination, the work of several regional artisans and writers appears in the First Parish Burial Ground, and their creations add to the burial ground's historical significance. Their work was identified through the efforts of local Gloucester historians who studied the carvings, attended New England gravestone carving workshops, read publications about carvers, and compared the dates of deaths on the stones with the work period of each carver. The historians' research is compiled and stored at the Gloucester City Archives.

John Hartshorne (1650-ca. 1738) appears to have carved the stones of Richard Yorke (d. 1718), Samuel Yorke (d. 1717), and a Yorke son (d. 1718). These stones have been removed from the burial ground and are stored in the city veterans' office, but the interments remain. Hartshorne began his carving career in Haverhill and produced many stones through the Essex County area.

John Homer (1727-ca.1803) appears to have produced the stone of Lydia Porter (d. 1773, DS 23). Homer was based in Boston and often carved the skull-and-crossbones and urn-and-willow motifs. His work has been found in Boston (including the Granary Burying Ground), and as far north as Portsmouth, New Hampshire.

Levi Maxcy (1770-1822) carved the white marble slab atop the table tomb of Captain Edward Gibaut (d. 1803, DS 29). Maxcy was born in Attleborough and moved to Salem at the age of twenty. It is not known where or from whom he learned to carve, but his career spanned twenty years (1791-1811) and dominated the stone carving trade in Salem during this period. He commonly carved stylized trees, acanthus, rising suns, urns and willows, and trimmed the stones with borders of vines, twisted rope, or swirls. His footstones often contained very large initials carved in a script style. The life and work of Levi Maxcy is detailed in Theodore Chase and Laurel K. Gabel's Gravestone Chronicles, II.

The Lamson shop, located in Charlestown, likely produced the stones of Hannah Stacey (d. 1771, DS 13) and several members of the Stacey family. This shop was begun by Joseph Lamson (1658-1722) in 1709, and continued by his sons Nathaniel (1693-1755) and Caleb (1697-1769). Joseph Lamson and his sons both employed fruit and scrolls in their designs and placed footstones with their headstones, often bearing the same designs. The lives and work of Joseph Lamson and his sons is chronicled in Harriette Merrifield Forbes's Gravestones of Early England.

(continued)

United States Department of the Interior  
National Park Service

## National Register of Historic Places Continuation Sheet

Section Number 8 Page 8

**First Parish Burial Ground  
Gloucester, Essex County, MA**

Boston artisan Nathaniel Emmes (1690-1750) appears to have carved the stone of John Harraden (d. 1725). Emmes began his career in ca. 1709 and may have apprenticed with master carver William Mumford, a neighbor. By 1715, Emmes had established his own shop, and soon became the most popular gravestone carver in Boston during the first half of the 18<sup>th</sup> century. He carved many stones in the Copps Hill Burying Ground (Boston), and also worked in Charleston, South Carolina. He is known for his winged-skull motifs, as well as winged faces with almond-shaped eyes.

The Gibaut slab's inscription was written by William Bentley and described in Bentley's diary entry of November 10, 1803. Reverend William Bentley served as minister of the Second Congregational Church of Salem from 1783 until 1819. In addition to serving his own parish, Bentley traveled to communities outside of Salem, and frequently visited Gloucester. He kept a diary and published a twice-weekly column in the Salem newspapers, chronicling the peoples' lives and community events of the towns he visited.

Several of the First Parish Burial Ground's gravestones were photographed by Jessie Lie Farber as part of the Farber Gravestone Collection, maintained by the American Antiquarian Society. Included in this compendium are the stones of Sarah Allen (d. 1772), William Hales (d. 1790), Elizabeth Hough (d. 1796), Elizabeth Low (d. 1770), Hannah Stacey (d. 1777), and William Warner (d. 1745).

### Restoration Plans

The neglect of the First Parish Burial Ground has concerned several members of the Gloucester community and these individuals have launched efforts to address the problems. In 1987, they began the "First Parish Burial Ground Project," and through this multiyear effort inventoried and recorded all the grave markers (both intact and fragmented) on a map and restored several of the most important gravestones. The Gloucester Historical Commission also appointed a subcommittee to focus on Gloucester's cemeteries and burial grounds, and this committee secured funds to develop a First Parish Burial Ground Preservation Plan, which was completed in the spring of 2008.

By nominating the First Parish Burial Ground to the National Register of Historic Places, the City of Gloucester, through its historical commission, hopes to promote a broader appreciation of the historic and artistic significance of this community resource. As the value of the burial ground becomes more widely known, the City intends to seek additional funding for continued restoration and care.

### Archaeological Significance

Historic archaeological resources described above have the potential to provide detailed information on the social, cultural, and economic characteristics of a coastal Essex County community as it evolved from a subsistence-based settlement in the 17<sup>th</sup> century to a thriving center of maritime industry. Existing burial stones indicate the 1700s as the period for the earliest burials; however, earlier graves may also exist. Structural evidence might also survive from a farm, related outbuildings, and occupational-related features (trash pits, privies, wells) originally located in the northern half of the cemetery. Information from historical and archaeological resources may contribute information on periods of occupation for the farm, domestic farm life, agricultural technology and production, and the settlement of the town.

(continued)

United States Department of the Interior  
National Park Service

## National Register of Historic Places Continuation Sheet

Section Number 8 Page 9

First Parish Burial Ground  
Gloucester, Essex County, MA

Archaeological resources, including graves and post molds indicating fence lines, may also be present, indicating that a family burial plot was present and explaining various grave distributions in the cemetery. Additional documentary research, combined with archaeological survey and testing within and around the current boundary of the cemetery, can identify the full range of graves present at the First Parish Burial Ground. Unmarked graves are probably present, and the current pattern of the gravestones may not, in every instance, represent their actual placement. Gravestones were frequently removed from older cemeteries then later replaced, at times in different locations. Descendants of individuals also potentially erected some stones as commemorative stones after their deaths. This scenario has been observed at other burying grounds in Massachusetts. Archaeological research can help identify these graves as well as later unmarked graves resulting from stolen, damaged, and overgrown stones. Eighteenth and nineteenth century unmarked graves may also be present, representing paupers and other unknown persons. Archaeological research can also help test the accuracy of the existing boundaries at the cemetery. These bounds may not accurately represent the actual cemetery boundaries. Some burials, possibly those of unknown persons, paupers, or other indigent persons, may have intentionally been buried outside the cemetery boundary. Artifact distributions may also be present associated with funerary or memorial services for specific individuals at their time of death, or individuals and groupings of individuals (possibly the entire burial ground) at later dates.

Much of the above information can be obtained through unobtrusive archaeological research. That is, information can be obtained by mapping artifact concentrations and the locations of features such as grave shafts and post molds without disturbing actual skeletal remains. Remote sensing techniques of investigation might also prove useful. Social, cultural, and economic information relating to the 17<sup>th</sup>, 18<sup>th</sup> and 19<sup>th</sup> century Gloucester settlement can be obtained in this manner; however, more detailed studies can be implemented through the actual excavation of burials and their analysis. Osteological studies of individuals interred at the burial ground have the potential to offer a wealth of information relating to the overall physical appearance of the town's inhabitants, their occupations, nutrition, pathologies, and cause of death. This information can be used to determine the actual number of individuals interred at the burial ground. The overall context of the grave, including material culture remains, can provide information on burial practices, religious beliefs, economic status, family structure and numerous other topics relating to the individual, the overall settlement, and the Congregational society.

(end)

United States Department of the Interior  
National Park Service

## National Register of Historic Places Continuation Sheet

Section Number 9 Page 1

First Parish Burial Ground  
Gloucester, Essex County, MA

### Major Bibliographical Resources

#### *Books*

Babson, John J., History of the Town of Gloucester Cape Ann including the Town of Rockport. Gloucester, Massachusetts: Peter Smith, 1972.

Chase, Theodore, and Laurel K. Gabel. Gravestone Chronicles: Some Eighteenth-Century New England Carvers and Their Work. Boston: New England Historic Genealogical Society, 1990.

Copeland, Melvin T. and Elliot C. Rogers, The Saga of Cape Ann. Gloucester, Mass.: Peter Smith, 1983.

Forbes, Harriette Merrifield, Gravestones of Early New England and the Men Who Made Them, 1653-1800. Brooklyn, New York: Center for Thanatology Research and Education, Inc., 1989.

Ludwig, Allan I., Graven Images, New England Stonecarving and its Symbols, 1650-1815. Middletown, CT: Wesleyan University Press, 1966.

Neal, Avon, and Ann Parker. Early American Stone Sculpture Found in the Burying Grounds of New England. New York, NY: Sweetwater Editions, 1981.

Philbrick, Nathaniel, Mayflower, a story of courage, community and war. New York: Viking Press, 2006.

Pringle, James R., History of the Town and City of Gloucester, Cape Ann, Massachusetts. Gloucester, Mass.: James R. Pringle, 1892.

#### *Maps (arranged by date)*

1614. John Smith's Map of New England. Massachusetts Historical Society.

1640-1995. Gloucester Cemeteries. Essex Society of Genealogists.

1741. Map of Gloucester, Cape Ann. Josiah Batchelder. Massachusetts Archives #576. Redrawn by Tristen Griffin in 1917.

1775-1783. Gloucester.

ND. Map of Gloucester, Cape Ann, Location of Early Settlers, J. B. Bradfords Lithograph.

(continued)

United States Department of the Interior  
National Park Service

## National Register of Historic Places Continuation Sheet

Section Number 9 Page 2

First Parish Burial Ground  
Gloucester, Essex County, MA

- ND. Map of Cape Ann (locations of permanent settlers from 1623 to 1642).
1795. Plan of Gloucester Containing 13116 Acres. Massachusetts Archives #1087.
1831. Map of Gloucester, Cap Ann from actual survey and observations by John Mason. Massachusetts Archives #1916
1855. Gloucester Harbor Massachusetts from a Trigonometrical Survey. United States Coast Guard.
1872. Gloucester in 1872. Saco Valley Printing Company, Fryeburg, ME, 1984.
1883. Map of Gloucester and Rockport. Sampson & Davenport & Co., Boston.
1884. City of Gloucester & Town of Rockport (plate 10). Gloucester & Rockport Atlas.
1907. Map of the City of Gloucester, Mass. Sampson & Murdock Co., Boston.
1917. Map of the City of Gloucester, Mass. Sampson & Murdock Co., Boston.
- c. 1940. Bridge Street Cemetery, WPA Project No. 12669, S-6308. Scale 1" = 20'. Includes legend showing Civil War veterans' graves on separate sheet.
- 1986-1995. Bridge Street Cemetery. C. 1940 WPA map annotated by the First Parish Burial Ground Gloucester Mass. Restoration Project, with locations of graves.

### ***Photographs***

American Antiquarian Society, The Farber Gravestone Collection.

First Parish Burial Ground. Collection of digital images prepared by the First Parish Burial Ground Gloucester Mass. Restoration Project, October 2007.

### ***Miscellaneous Documents***

Benes, Peter. "Lt. John Hartshorn: Gravestone Maker of Haverhill and Norwich." *Essex Institute Historical Collections* 109 (1973): 152-64

Dolliver, William Henry, "Report on the First Parish Burial Yard". Prepared for the City of Gloucester Selectmen, 1895.

(continued)

United States Department of the Interior  
National Park Service

## National Register of Historic Places Continuation Sheet

Section Number 9

Page 3

**First Parish Burial Ground  
Gloucester, Essex County, MA**

---

First and Third Parish Papers, 1738-1742. Copied by Barbara Lambert from the Massachusetts State Archives.

First Parish Burial Ground Inventory of Graves. Prepared 1986-1995 by the First Parish Burial Ground Gloucester Mass. Restoration Project.

Gloucester Daily Times, articles pertaining to condition and restoration of the First Parish Burial Ground, August 29, 1989, July 27, 1993, December 1, 1997, February 16, 1998, April 3, 1999.

Gloucester, MA Burials Inscribed on Tombstones 1711-1898. City of Gloucester Archives Committee.

Gloucester, MA Cemetery Gravestone Inscriptions 1642-1897 (three volumes). City of Gloucester Archives Committee.

Gloucester, Massachusetts Names and Property of Early Settlers, 1642-1714/15. Copied from First Volume of Gloucester Town Records. City of Gloucester Archives Committee.

Gloucester Town Records, 1642-1714. City of Gloucester Archives Committee.

Massachusetts Historical Commission Form E – Burial Ground, First Parish Burial Ground. Recorded by the Gloucester Historical Commission, February 2007.

Register, First Church of Gloucester, Archives Collection. Cape Ann Historical Association.

(end)

First Parish Burial Ground  
Name of Property

Essex, Massachusetts  
County and State

## 10. Geographical Data

Acreage of Property 2.5 Acres

### UTM References See continuation sheet.

(Place additional UTM references on a continuation sheet)

1. Zone 19 Easting 362640 Northing 4719460

3. Zone Easting Northing

2. Zone Easting Northing

4. Zone Easting Northing

— See continuation sheet

### Verbal Boundary Description

(Describe the boundaries of the property on a continuation sheet.)

### Boundary Justification

(Explain why the boundaries were selected on a continuation sheet.)

## 11. Form Prepared By

name/title Martha H. Lyon with Betsy Friedberg, NR Director, MHC

organization Massachusetts Historical Commission date January 2010

street & number 220 Morrissey Boulevard telephone 617-727-8470

city or town Boston state MA zip code 02125-3314

### Additional Documentation

Submit the following items with the completed form:

#### Continuation Sheets

#### Maps

A **USGS map** (7.5 or 15 minute series) indicating the property's location.

A **sketch map** for historic districts and properties having large acreage or numerous resources.

#### Photographs

Representative **black and white photographs** of the property.

**Additional items** (Check with the SHPO or FPO for any additional items)

### Property Owner

(Complete this item at the request of the SHPO or FPO.)

name City of Gloucester

street & number 9 Dale Avenue telephone 978-281-9700

city or town Gloucester state Massachusetts zip code 01930

**Paperwork Reduction Act Statement:** This information is being collected for applications to the National Register of Historic Places to nominate properties for listing or determine eligibility for listing, to list properties, and to amend existing listings. Response to this request is required to obtain a benefit in accordance with the National Historic Preservation Act, as amended (16 U.S.C. 470 et seq.).

**Estimated Burden Statement:** Public reporting burden for this form is estimated to average 18.1 hours per response including the time for reviewing instructions, gathering and maintaining data, and completing and reviewing the form. Direct comments regarding this burden estimate or any aspect of this form to the Chief, Administrative Services Division, National Park Service, P.O. Box 37127, Washington, DC 20013-7127; and the Office of Management and Budget, Paperwork Reductions Project (1024-0018), Washington, DC 20503.

United States Department of the Interior  
National Park Service

## National Register of Historic Places Continuation Sheet

Section Number 10 Page 1

First Parish Burial Ground  
Gloucester, Essex County, MA

---

### Verbal Boundary Description

The nominated property is the parcel of land known as the First Parish Burial Ground. It is shown on the attached "Location Map," and is included on City of Gloucester's Assessor's Map #22 (Parcel 3). The boundary is continuous and is delineated by a cut granite block wall, dry-laid field stone wall and chain link fence.

### Boundary Justification

The boundary of the nominated property includes the 2.5 acres historically associated with the First Parish Burial Ground, established on ½ acre in 1644 and expanded to 2.5 acres in 1667. Those resources associated with the First Parish Burial Ground include the Centennial Avenue entry gate, perimeter wall, and many 18<sup>th</sup>, 19<sup>th</sup> and early 20<sup>th</sup> century grave markers, monuments and tombs.

(end)

**FIRST PARISH BURIAL GROUND**

Gloucester

Essex County, Massachusetts

**DATA SHEET**

*Note: The following list represents a representative sample of grave markers at the First Parish Burial Ground. All resources contained in the data sheet & on the sketch map included as additional material in the nomination.*

NUMBER	RESOURCE	YEAR	MATERIAL	FORM/STYLE
1	First Parish Burial Ground	ca. 1644	N/A	Cemetery
2	East Entry Wall	ca. 1847	Cut Stone	Mortared Granite Block Wall
3	East Entry Gate	ca. 1847	Granite/Iron	Square Posts/Wrought Iron Gate
4	West Gate	ca. 1840	Granite	Square Cut Granite Posts
5	Perimeter Wall	ca. 1667	Stone	Dry-laid Stone Wall
6	Sargent Tomb	ca. 1763	Granite	Underground Tomb with Granite Slab Marker
7	Rogers Family Plot	ca. 1746	Granite Coping Slate Stones	Family Plot 4 Tablets with Urn & Willow Motif
<b>GRAVESTONES, MONUMENTS &amp; MARKERS</b>				
8	Isabel Babson	ca. 1950	Slate	Tablet Willow & Urn Motif placed by Roger Babson
9	Zerubbable Allen	d. 1749	Slate	Tablet Winged Skull Motif
10	Jeremiah Allen	d. 1767	Slate	Tablet Winged Skull Motif
11	Elizabeth Plummer	d. 1800	Slate	Tablet Winged Skull Motif
12	Daniel Rogers	d. 1800	Slate	Tablet Death's Head Motif
13	Hannah Stacey	d. 1771	Slate	Tablet Winged Cherub Motif/Carved by the Lamson Shop

**FIRST PARISH BURIAL GROUND**

Gloucester

Essex County, Massachusetts

**DATA SHEET**

NUMBER	RESOURCE	YEAR	MATERIAL	FORM/STYLE
14	Elizabeth Hough	d. 1796	Slate	Tablet Winged Cherub Motif
15	John Low	d. 1796	Slate	Tablet Winged Cherub Motif
16	Sarah Allen	d. 1772	Slate	Tablet Winged Cherub Motif
17	Elizabeth Gorham Rogers	d. 1769	Slate	Tablet Willow and Urn Motif
18	Sally Smith	d. 1795	Slate	Tablet Willow and Urn Motif
19	Susan Rogers	d. 1796	Slate	Tablet Willow and Urn Motif
20	Solomon Parsons	d. 1807	Slate	Tablet Willow and Urn/Architectural Motif
21	William Warner	d. 1745	Schist	Tablet Winged Man's Head Flanked by Wings
22	William Hales	d. 1790	Slate	Tablet Masonic Seal
23	Lydia Porter	d. 1773	Slate	Tablet Carved by John Homer
24	Adams Monument	ca. 1830	Marble	Stele
25	Sarah Coas	d. 1856	Marble	Tablet
26	William Coas	d. 1865	Marble	Tablet
27	Edward Gray	d. 1860	Marble	Tablet Rose Motif
28	Bathsheba Roberts	d. 1832	Marble	Tablet Broken Chain Motif
29	Captain Edward Gibaut	d. 1803	Granite/Slate	Box Tomb
30	Reverend John White	d. 1760	Brick/Sandstone	Box Tomb



United States Department of the Interior  
National Park Service

# National Register of Historic Places Continuation Sheet

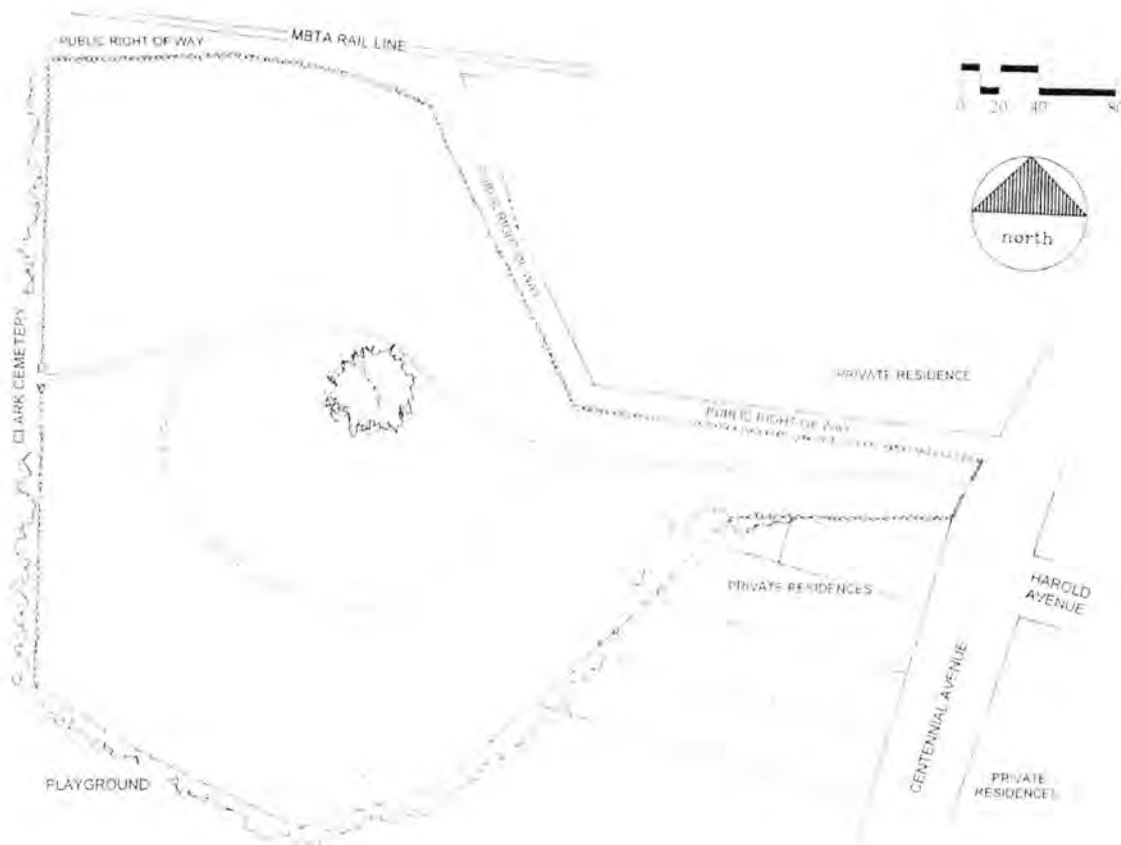
Maps & Photographs

Page 1

First Parish Burial Ground  
Gloucester, Essex County, MA

## LOCATION MAP

Sources: City of Gloucester Assessor's Map 22  
WPA Veterans' Graves Registration Project Map (c. 1940)



United States Department of the Interior  
National Park Service

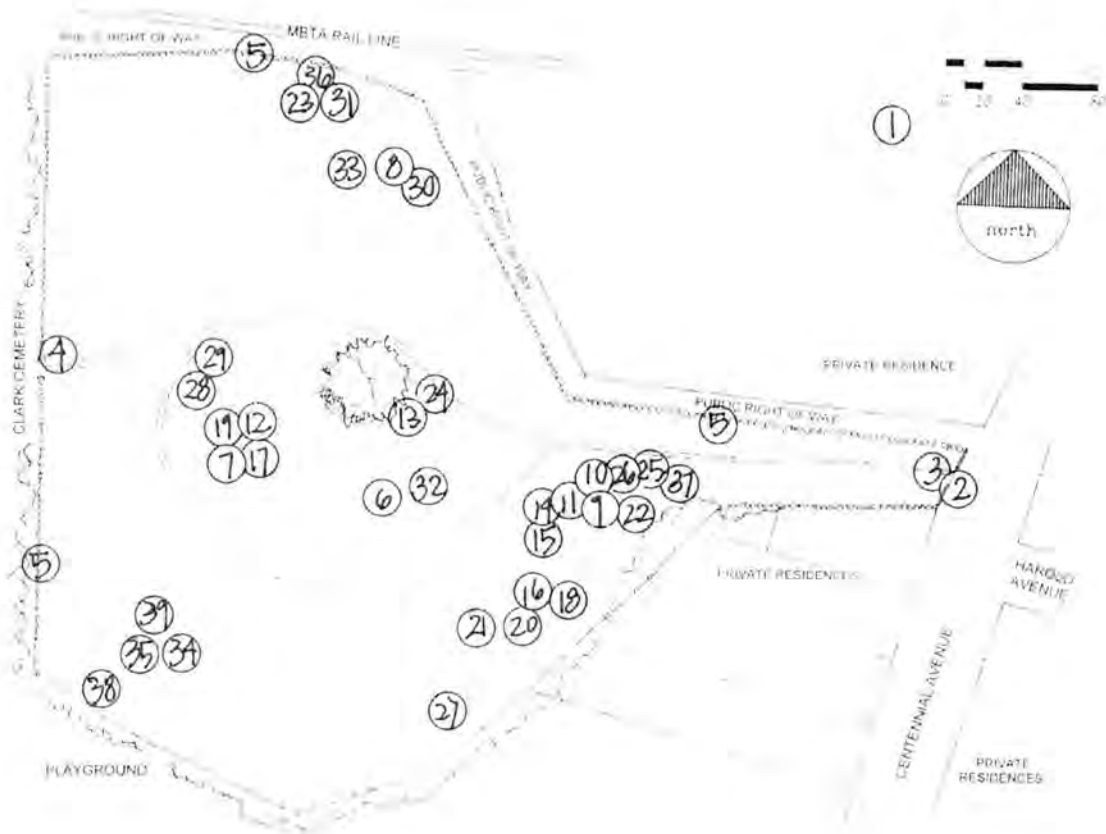
# National Register of Historic Places Continuation Sheet

Maps & Photographs

Page 2

First Parish Burial Ground  
Gloucester, Essex County, MA

## DATA LOCATIONS



United States Department of the Interior  
National Park Service

## National Register of Historic Places Continuation Sheet

Maps & Photographs

Page 3

First Parish Burial Ground  
Gloucester, Essex County, MA

---

### PHOTOGRAPHS

Photographer: Martha H. Lyon  
Martha Lyon Landscape Architecture, LLC  
(10-2007)

Location of Digital Files: City of Gloucester Archives  
9 Dale Avenue – City Hall  
Gloucester, MA 01930

- 1 Centennial Avenue entrance to the First Parish Burial Ground, taken from Centennial Avenue, looking west.
- 2 The First Parish Burial Ground landscape taken from the northern side near the mature oak tree, looking south.
- 3 Three marble tablets of the Davis family, located in the burial ground's southwest corner. Taken from the north side looking south.
- 4 The tomb of Rev. John White, taken from the north side, looking south.
- 5 The slate tablet of Jeremiah Allen, taken from the southwest side, looking northeast.
- 6 The slate tablet of Zerubbable Allen, taken from the southwest side, looking northeast.

United States Department of the Interior  
National Park Service

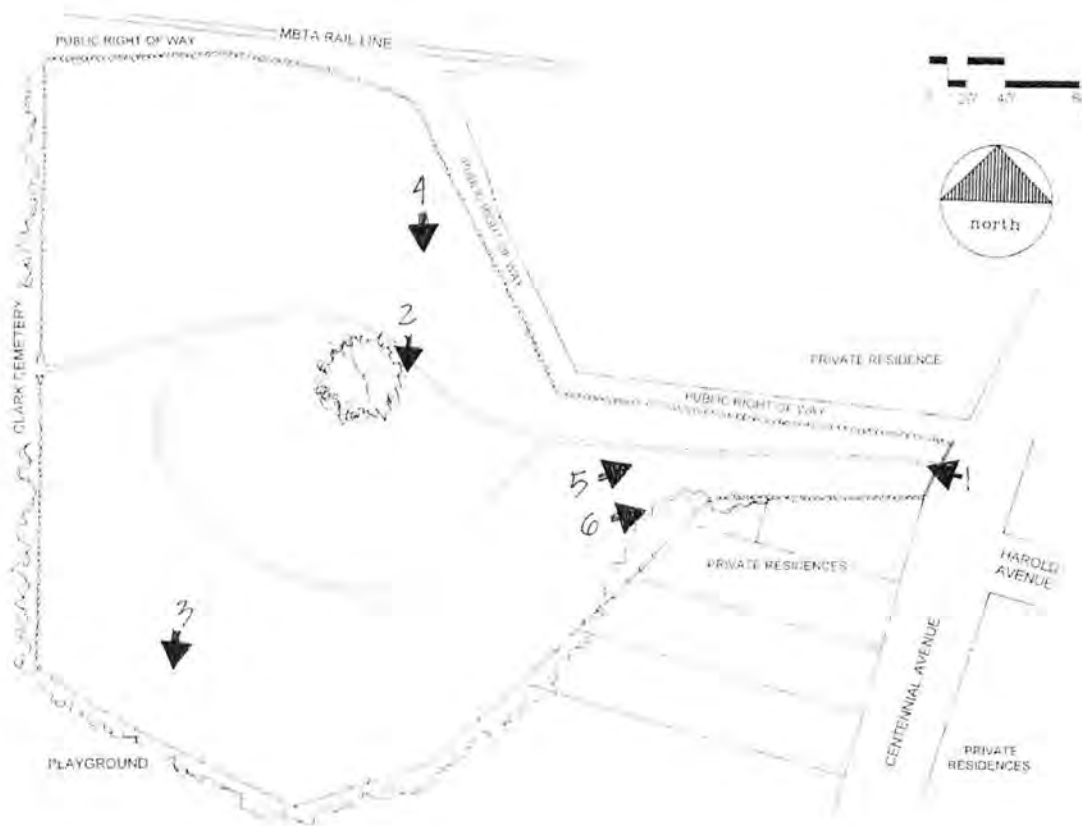
# National Register of Historic Places Continuation Sheet

Maps & Photographs

Page 4

First Parish Burial Ground  
Gloucester, Essex County, MA

## PHOTOGRAPH LOCATIONS



United States Department of the Interior  
National Park Service

## National Register of Historic Places Continuation Sheet

Maps & Photographs

Page 5

First Parish Burial Ground  
Gloucester, Essex County, MA

---

### COLOR DIGITAL IMAGES

Photographer: Martha H. Lyon  
Martha Lyon Landscape Architecture, LLC  
(Images 1, 2, & 6 – 10/2007; Images 3, 4, 5, 7, & 8 – 3/2008)

- #1 Centennial Avenue Entrance to the First Parish Burial Ground, taken from the east side, looking west.
- #2 View across the burial ground landscape, taken from the east side, looking west.
- #3 View across the burial ground landscape, taken from the east side, looking southwest.
- #4 View across the burial ground landscape with the Adams monument and oak tree in the middle ground. Taken from the northeast side, looking southwest.
- #5 Slate grave marker of John Low (d. 1796) taken from the northeast side, looking southwest.
- #6 The slate grave marker of Zerubbable Allen (d. 1749) taken from the west side, looking east.
- #7 The slate grave marker of Elizabeth Gorham Rogers (d. 1769), taken from the north side, looking south.
- #8 The marble grave markers of Sarah and William Coas, taken from the north side, looking south.

United States Department of the Interior  
National Park Service

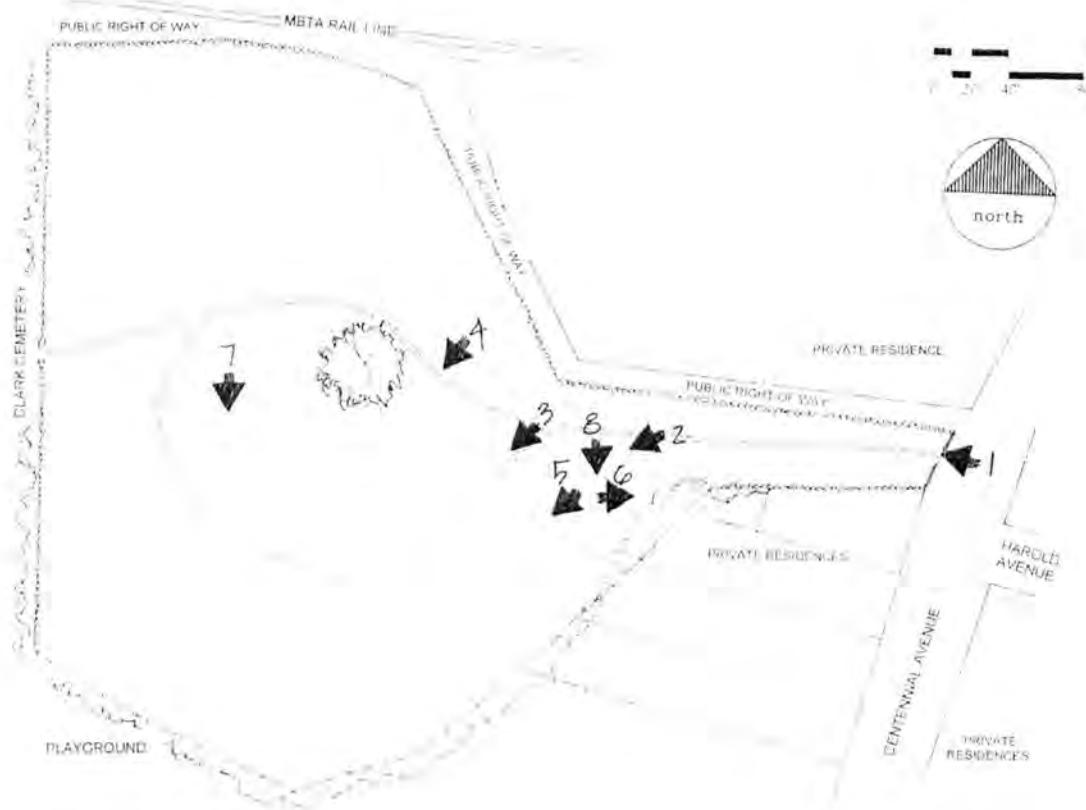
# National Register of Historic Places Continuation Sheet

Maps & Photographs

Page 6

First Parish Burial Ground  
Gloucester, Essex County, MA

## COLOR DIGITAL IMAGE LOCATIONS



UNITED STATES DEPARTMENT OF THE INTERIOR  
NATIONAL PARK SERVICE

NATIONAL REGISTER OF HISTORIC PLACES  
EVALUATION/RETURN SHEET

REQUESTED ACTION: NOMINATION

PROPERTY First Parish Burial Ground  
NAME:

MULTIPLE  
NAME:

STATE & COUNTY: MASSACHUSETTS, Essex

DATE RECEIVED: 1/15/10 DATE OF PENDING LIST: 2/03/10  
DATE OF 16TH DAY: 2/18/10 DATE OF 45TH DAY: 3/01/10  
DATE OF WEEKLY LIST:

REFERENCE NUMBER: 10000040

Appeal: N Data Problem: N Landscape: N Less than 50 Years: N  
Other: N PDIL: N Period: N Program Unapproved: N  
Request: Y Sample: N SLR Draft: N National: N

Comment Waiver: N

ACCEPT  RETURN  REJECT 2/26/2010 DATE

ABSTRACT/SUMMARY COMMENTS:

Oldest burial ground in Gloucester, MA. The cemetery includes the graves of many of the towns earliest settlers and most prominent families and contains important examples of New England funerary art.

RECOM./CRITERIA Accept AIC

REVIEWER Patrick Andrus Discipline Historian

DATE 2/26/2010

DOCUMENTATION see attached comments Y/N see attached SLR Y/N

If a nomination is returned to the nominating authority, the nomination is no longer under consideration by the NPS



#1

FIRST PARISH BURIAL GROUND  
LOWELL, ESSEX COUNTY, MA  
MARTHA H. LYON - 10.2007

CENTENNIAL AVENUE ENTRANCE TO THE FIRST PARISH BURIAL GROUND,  
TAKEN FROM CENTENNIAL AVENUE, LOOKING WEST.



#2

FIRST PARISH BURIAL GROUND  
GLOUCESTER, ESSEX COUNTY, MA

MARTHA H. LYON - 10.2007

THE FIRST PARISH BURIAL GROUND LANDSCAPE, TAKEN FROM THE NORTHERN  
SIDE NEAR THE MATURE OAK TREE, LOOKING SOUTH.



#3

FIRST PARISH BURIAL GROUND

WORCESTER, ESSEX COUNTY, MA

MARTA H. LYON 10.2007

THREE MARBLE TABLETS OF THE DAVIS FAMILY, LOCATED IN THE BURIAL GROUND'S  
SOUTHWEST CORNER, TAKEN FROM THE NORTH SIDE, LOOKING SOUTH.



#4

FIRST PARISH BURIAL GROUND  
GROVEBURY, ESSEX COUNTY, MA

MARITA H. WYON 10.2007

THE TOMB OF REV. JOHN WHITE, TAKEN FROM THE NORTH  
SIDE, LOOKING SOUTH.



HERE LYES BURIED  
THE BODY OF  
JEREMIAH ALLEN STUDENT  
AT HARVARD COLLEGE  
AGED 20 YEARS 2. M. & 24  
DEC. ANNO 1723

#5

FIRST PARISH BURIAL GROUND

GLoucester, ESSEX COUNTY, MA

MARITA H. LYON 10. 2007

THE SLATE TABLET OF JEREMIAH ALLEN, TAKEN FROM THE SOUTHWEST  
SIDE, LOOKING NORTHEAST.



Here lies Interr'd the  
Remains of  
M. ZERUBBABLE ALLEN  
who departed 41

#6

FIRST PAKISTH BUIAL GROUND  
WINDLESTER, ESSEX COUNTY, MA

MARITA H. MON 10.2007

THE SLATE TABLET OF ZEPHRAEUS AULON, TAKEN FROM THE SOUTHWEST  
SIDE, LOOKING NORTHEAST.



# Gloucester

MASSACHUSETTS  
1:25 000-scale metric  
topographic map

7.5 X 15 MINUTE QUADRANGLE  
SHOWING

- Contours and elevations in meters
- Highways, roads and other manmade structures
- Water features
- Woodland areas
- Geographic names

GEOLOGICAL SURVEY  
1984

Produced by the United States Geological Survey in cooperation with Massachusetts Department of Public Works. Control by USGS, NOS/NOAA, and Commonwealth of Massachusetts agencies. Compiled by photogrammetric methods from aerial photographs taken 1978. Field checked 1979. Map dated 1984. Supersedes Gloucester and Rockport 1:25,000-scale maps dated 1979.

Selected hydrographic data compiled from NOS charts 13267 (1981), 13278 (1963), and 13281 (1982). This information is not intended for navigational purposes.

Projection and 1000-meter grid, zone 19; Universal Transverse Mercator; 10,000-foot grid ticks based on Massachusetts coordinate system, mainland zone; 1987 North American Datum.

To place on the predicted North American Datum 1983 move the projection lines 6 meters south and 42 meters west as shown by dashed corner ticks.

CONTOUR INTERVAL 3 METERS  
NATIONAL GEODETIC VERTICAL DATUM OF 1929  
CONTROL ELEVATIONS SHOWN TO THE NEAREST 0.1 METER  
OTHER ELEVATIONS SHOWN TO THE NEAREST 0.5 METER  
DEPTH CURVES AND SOUNDINGS IN METERS  
DATUM IS MEAN LOW WATER  
THE RELATIONSHIP BETWEEN THE TWO DATUMS IS VARIABLE  
SHORELINE SHOWN REPRESENTS THE APPROXIMATE LINE  
OF MEAN HIGH WATER  
THE MEAN RANGE OF TIDE IS APPROXIMATELY 2.7 METER  
THIS MAP COMPLES WITH NATIONAL MAP ACCURACY STANDARDS

CONVERSION TABLE		DECLINATION DIAGRAM	ADJOINING MAPS
Meters	Feet		1 2 3
1	3.2808		4 5
2	6.5617		6 7 8
3	9.8425		
4	13.1234		
5	16.4043		
6	19.6852		
7	22.9660		
8	26.2469		
9	29.5278		
10	32.8086		

To convert meters to feet multiply by 3.2808  
To convert feet to meters multiply by 0.3048

UTM grid convergence (GM) and 1984 magnetic declination (MD) at center of map. Diagram is approximate.

1 Ipswich  
2 Rockport  
3  
4 Salem  
5  
6 Lynn  
7  
8

FOR SALE BY U. S. GEOLOGICAL SURVEY  
RESTON, VIRGINIA 22092

### Topographic Map Symbols

Primary highway, hard surface	.....
Secondary highway, hard surface	.....
Light-duty road, hard or improved surface	.....
Unimproved road, trail	.....
Road marker: Interstate, U. S., State	.....
Railroad: standard gage, narrow gage	.....
Bridge, drawbridge	.....
Footbridge, overpass, underpass	.....
Built-up area: only selected landmark buildings shown	.....
House, barn, church, school, large structure	.....
Boundary:	.....
National, with monument	.....
State	.....
County, parish	.....
Civil township, precinct, district	.....
Incorporated city, village, town	.....
National or State reservation, small park	.....
Land grant with monument, found section corner	.....
U. S. public lands survey: range, township; section	.....
Range, township; section line: location approximate	.....
Fence or field line	.....
Power transmission line, located tower	.....
Dam, dam with lock	.....
Cemetery: grave	.....
Campground, picnic area, U. S. location monument	.....
Windmill; water well, spring	.....
Mine shaft; prospect; adit or cave	.....
Control: horizontal station; vertical station; spot elevation	.....
Contours: index; intermediate; supplementary; depression	.....
Distorted surface: strip mine, lava, sand	.....
Bathymetric contours: index; intermediate	.....
Perennial lake and stream; intermittent lake and stream	.....
Riprap; large and small; lava, large and small	.....
Submerged marsh; marsh, swamp	.....
Land subject to controlled inundation; woodland	.....
Scrub; mangrove	.....
Orchard; vineyard	.....



20

21

36

EMERSON AVENUE

MORTON PLACE

GRIFFIN COURT

CENTENNIAL AVENUE

HARVARD STREET

SCALE 1" = 40'

RECEIVED  
SEP 30 2009  
MASS. HIST. COMM

CITY OF GLOUCESTER, MASSACHUSETTS  
SHEET NO. 22

FIRST PARISH BURIAL GROUND  
GLOUCESTER, ESSEX COUNTY, MA  
SHEET 22 / PAPER 3

FOR ASSESSMENT PURPOSES ONLY



**The Commonwealth of Massachusetts**  
William Francis Galvin, Secretary of the Commonwealth  
Massachusetts Historical Commission



January 5, 2010

Mr. J. Paul Loether, Chief  
National Register of Historic Places  
Department of the Interior  
National Park Service  
1201 Eye Street, NW 8<sup>th</sup> floor  
Washington, DC 20005

Dear Mr. Loether:

Enclosed please find the following nomination form:

First Parish Burying Ground, 122-R Centennial Avenue, Gloucester (Essex), MA

The nomination has been voted eligible by the State Review Board and has been signed by the State Historic Preservation Officer. The owners of the property were notified of pending State Review Board consideration 30 to 45 days before the meeting and were afforded the opportunity to comment.

Sincerely,

A handwritten signature in cursive script that reads "Betsy Friedberg".

Betsy Friedberg  
National Register Director  
Massachusetts Historical Commission

Enclosure

cc: David Rhinelander, Thomas O'Keefe, Gloucester Historical Commission  
Mayor Carolyn Kirk, City of Gloucester  
Martha Lyon, Paysage  
Jeneth Fahey, Chair, Gloucester Planning Board