



Ranch headquarters; Spring Hill Ranch
Chase County, Kansas

Brad Finch

2-17-96

National Park Trust; 1776 Massachusetts Ave., NW; Washington, D.C.

West

1



Ranch headquarters, Spring Hill Ranch

Chase County, Kansas

Brad Finch

2-17-96

National Park Trust; 1776 Massachusetts; NW; Washington, D.C.

West

2



AD 1881

11
1881

Ranch house & terraces; Spring Hill Ranch

Chase County, Kansas

Brad Finch

2-17-96

National Park Trust; 1776 Massachusetts Ave., NW; Washington, DC

West

3



Ranch house; Spring Hill Ranch

Chase County, Kansas

Brad Finch

2-17-96

National Park Trust; 1776 Massachusetts Ave., NW; Washington, DC

Northwest

4



Smokehouse & Ranch house; Spring Hill Ranch

Chase County, Kansas

Brad Finch

2-17-96

National Park Trust; 1776 Massachusetts Ave. N.W.; Washington, D.C.

Southeast

5



Entry hall & main staircase/ranch house; Spring Hill Ranch
Chase County, Kansas

Brad Finch

2-17-96

National Park Trust; 1776 Massachusetts Ave., NW; Washington, DC
West

6



South parlor/ranch house; Spring Hill Ranch

Chase County, Kansas

Brad Finch

2-17-94

National Park Trust; 1776 Massachusetts Ave., NW; Washington, DC

Southeast

7



Barn; Spring Hill Ranch

Chase County, Kansas

Brad Finch

2-17-96

National Park Trust; 1776 Massachusetts; N.W.; Washington, D.C.

Southwest

8

175 Spring. eps



Silo, Barn, South corral; Spring Hill Ranch

Chase County, Kansas

Brad Finch

2-17-96

National Park Trust; 1776 Massachusetts Ave., NW; Washington, DC

Northwest

9



Stalls/barn; Spring Hill Ranch

Chase County, Kansas

Brad Finch

2-17-96

National Park Trust; 1776 Massachusetts, NW; Washington, D.C.

Northeast

10



Barn & west corral; Spring Hill Ranch
Chase County, Kansas

Brad Finch

2-17-96

National Park Trust; 1776 Massachusetts Ave, NW; Washington, D.C.

Northeast

11



West corral; Spring Hill Ranch

Chase County, Kansas

Brad Finch

2-17-96

National Park Trust; 1776 Massachusetts Ave., NW; Washington, D.C

West

12



(from left to right) Equipment sheds/scratch house/Poultry house, garage; Spring Hill Ranch
Chase County, Kansas

Brad Finch

2-17-96

National Park Trust; 1776 Massachusetts Ave., NW; Washington, D.C.

Northwest

13



Ice house; Spring Hill Ranch

Chase County, Kansas

Brad Finch

2-17-96

National Park Trust; 1776 Massachusetts Ave., NW; Washington, DC

North

14



Ice house, cistern; Spring Hill Ranch

Chase County, Kansas

Brad Finch

2-17-94

National Park Trust; 1776 Massachusetts Ave, NW; Washington, DC

Northwest

15



Outhouse; Spring Hill Ranch

Chase County, Kansas

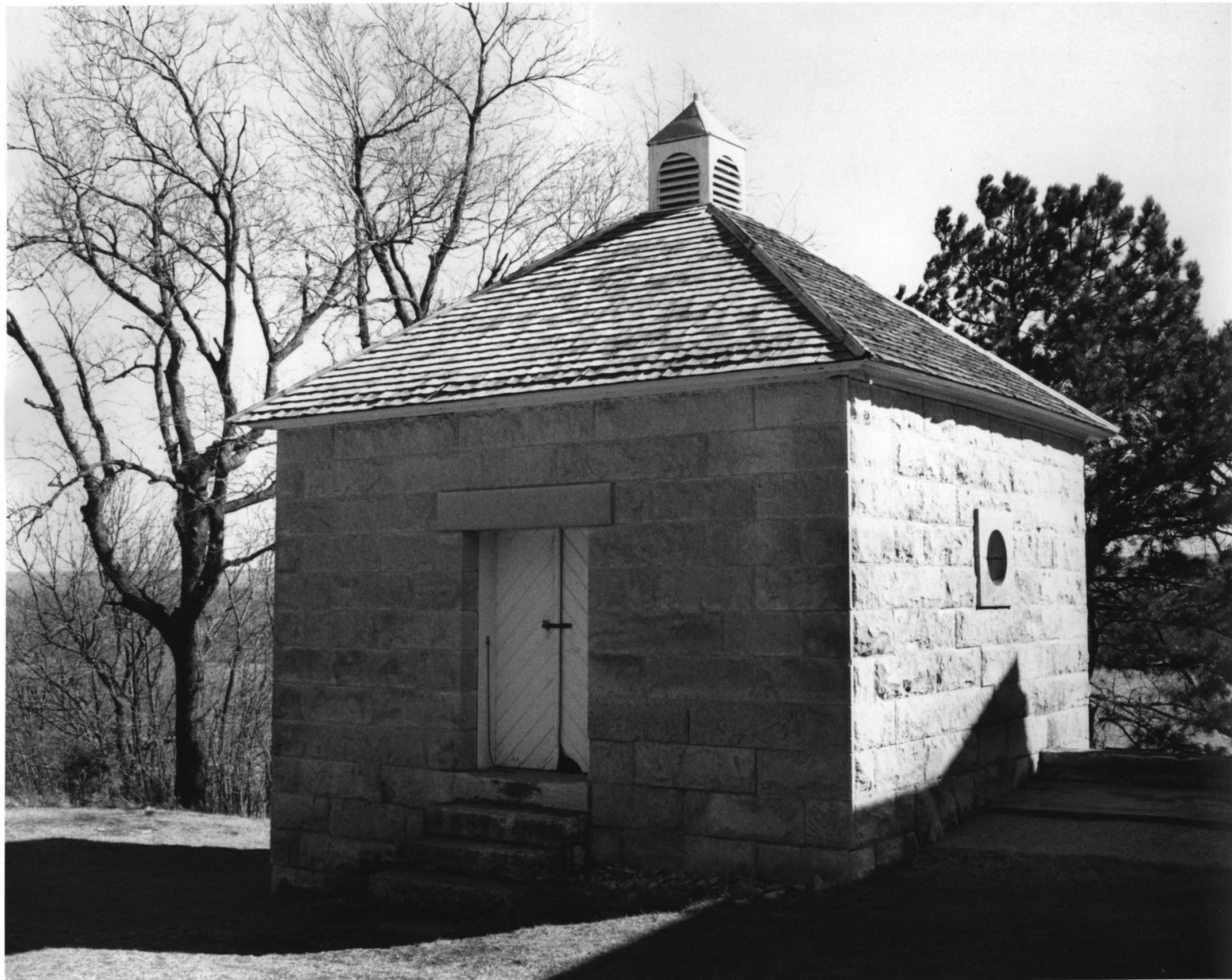
Brad Finch

2-17-96

National Park Trust; 1776 Massachusetts Ave., NW; Washington, D.C.

Northwest

16



Smokehouse/springhouse; Spring Hill Ranch

Chase County, Kansas

Brad Finch

2-17-96

National Park Trust; 1776 Massachusetts Ave., NW; Washington, DC.

Northeast

17



Stone fence; Spring Hill Ranch

Chase County, Kansas

Brad Finch

2-17-96

National Park Trust; 1776 Massachusetts; NW; Washington, D.C.

North

18



Ranch lands; Spring Hill Ranch
Chase County, Kansas

Brad Finch

2-17-96

National Park Trust; 1776 Massachusetts Ave., N.W., Washington, D.C.

East

19



Stone fence & Fox Creek bottoms; Spring Hill Ranch

Chase County, Kansas

Brad Finch

2-17-96

National Park Trust; 1776 Massachusetts Ave., NW, Washington, D.C.

East

20



Ranch lands & headquarters; Spring Hill Ranch
Chase County, Kansas

Brad Finch

2-17-96

National Park Trust; 1776 Massachusetts Ave., NW; Washington, DC

Northeast

21



Ranch lands; Spring Hill Ranch

Chase County, Kansas

Brad Finch

2-17-96

National Park Trust; 1776 Massachusetts Ave., NW, Washington, DC

West

22



Ranch lands; Spring Hill Ranch

Chase County, Kansas

Brad Finch

2-17-96

National Park Trust; 1776 Massachusetts Ave., NW; Washington, DC

Southwest

23



Springhouse & ruins; Spring Hill Ranch

Chase County, Kansas

Brad Finch

2-17-96

National Park Trust; 1776 Massachusetts Ave., N.W.; Washington, D.C.

Southwest

24



Lower Fox Creek Schoolhouse; Spring Hill Ranch

Chase County, Kansas

Brad Finch

2-17-94

National Park Trust; 1776 Massachusetts Ave., NW; Washington, D.C.

West

25



Ranch lands, stone fence, Lower Fox Creek School outhouse; Spring Hill Ranch
Chase County, Kansas

Brad Finch

2-17-96

National Park Trust; 1776 Massachusetts Ave., NW; Washington, D.C.

Southwest

26



Lantry poultry house; Spring Hill Ranch
Chase County, Kansas
Brad Finch

2-17-96

National Park Trust; 1776 Massachusetts Ave., NW; Washington, DC