



KETNER'S MILL

NOV 23 1977 *D. O. E*

VICTORIA, TENNESSEE

OCT 12 1976

PHOTO BY: Gail Hammerquist

DATE: May 1976

NEG: Tennessee Historical Commission

Ketner Bridge, span with wood decking

1069



NOV 23 1977

KETNER'S MILL

VICTORIA, TENNESSEE

OCT 12 1976

PHOTO BY: Gail Hammerquist

DATE: May 1976

NEG: Tennessee Historical Commission

West elevation

2069



KETNER'S MILL

NOV 23 1977

VICTORIA, TENNESSEE

OCT 12 1976

PHOTO BY: Gail Hammerquist

DATE: May 1976

NEG: Tennessee Historical Commission

Clyde Ketner dressing the original mill stone

3 of 9



KETNER'S MILL

NOV 23 1977

VICTORIA, TENNESSEE

OCT 12 1976

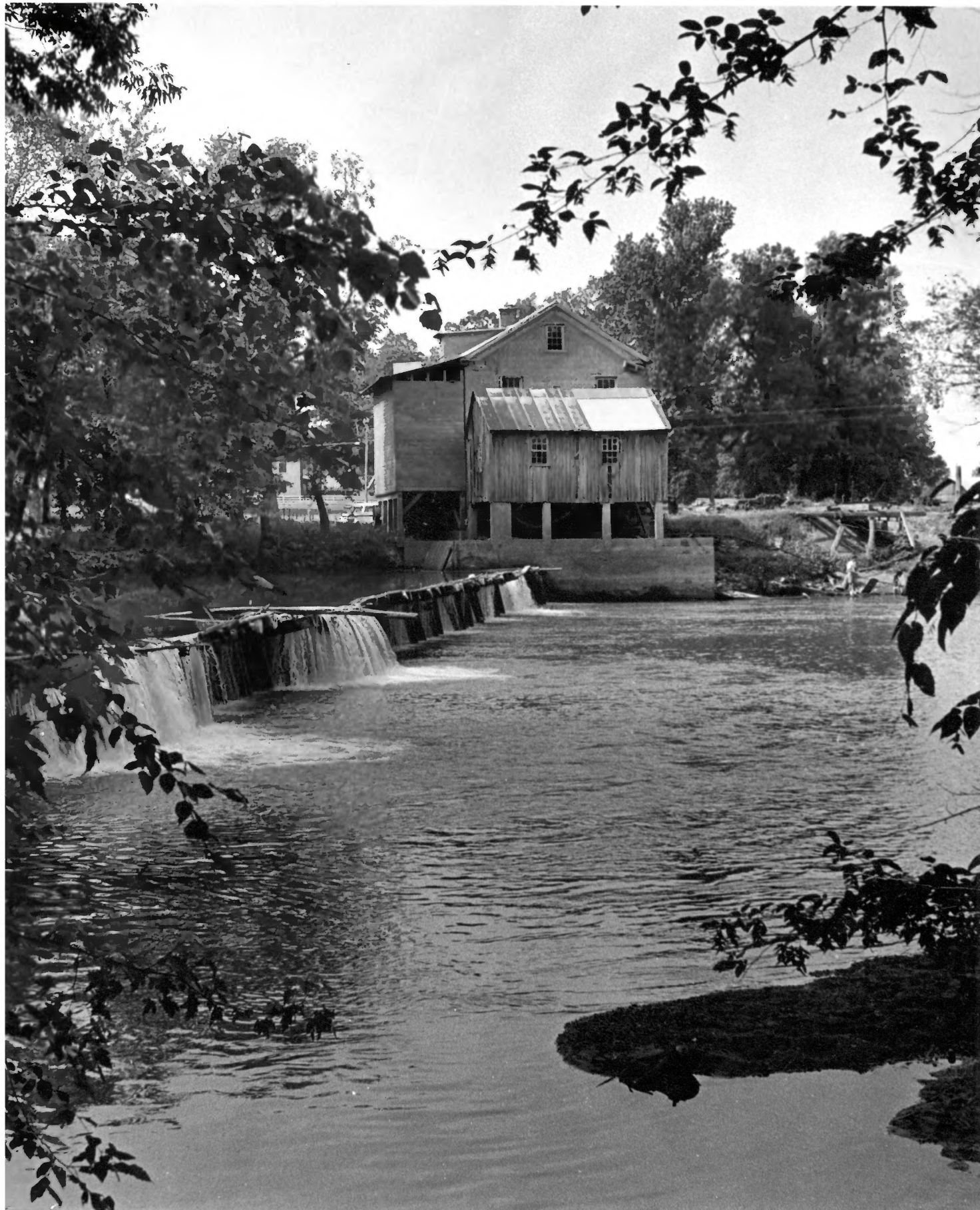
PHOTO BY: Gail Hammerquist

DATE: May 1976

NEG: Tennessee Historical Commission

View of new dam construction, new waterhouse,
old, frame wool carding house

4 of 9



KETNER'S MILL

VICTORIA, TENNESSEE

PHOTO BY: Deimont Wilson

OCT 12 1976

DATE: unknown

NEG: Chattanooga News-Free Press

549

Log dam before restoration

1884
EQUIPMENT
CONVERSE BRIDGE CO.
CHARLESTON, S. C.
MANUFACTURERS OF
STEEL BRIDGES
AND STRUCTURES
AND
IRON WORK

KETNER'S MILL

NOV 23 1977

VICTORIA, TENNESSEE

PHOTO BY: Gail Hammerquist

OCT 12 1976

DATE: May 1976

NEG: Tennessee Historical Commission

Ketner Bridge, detail

6 of 9



NOV 23 1977

Ketner's Mill

Victoria, Tennessee

Photo by; Gail Hammerquist

OCT 12 1976

Date: May 1976

Neg: Tennessee Historical Commission

Front and right side elevation

70/9



KETNER'S MILL

VICTORIA, TENNESSEE

PHOTO BY: Gail Hammerquist

DATE: May 1976

NEG: Tennessee Historical Commission

Ketner House, main facade

OCT 12 1976

8 of 9

NOV 23 1977



NOV 23 1977

KETNER'S MILL

VICTORIA, TENNESSEE

PHOTO BY: Gail Hammerquist

OCT 12 1976

DATE: May 1976

NEG: Tennessee Historical Commission

9 of 9

Main entrance, south elevation