



COURT HOUSE

NEW YORK

S514

Court House, Seward, Seward County,
Nebraska.

#1 of 36 Photographs

Photo 1

Seward County Courthouse Square Historic
District; Seward, Seward Co., Nebraska

Seward County Courthouse (SW09-93),
Historic view, ca. 1915, photographer
facing northeast, photographer unknown.

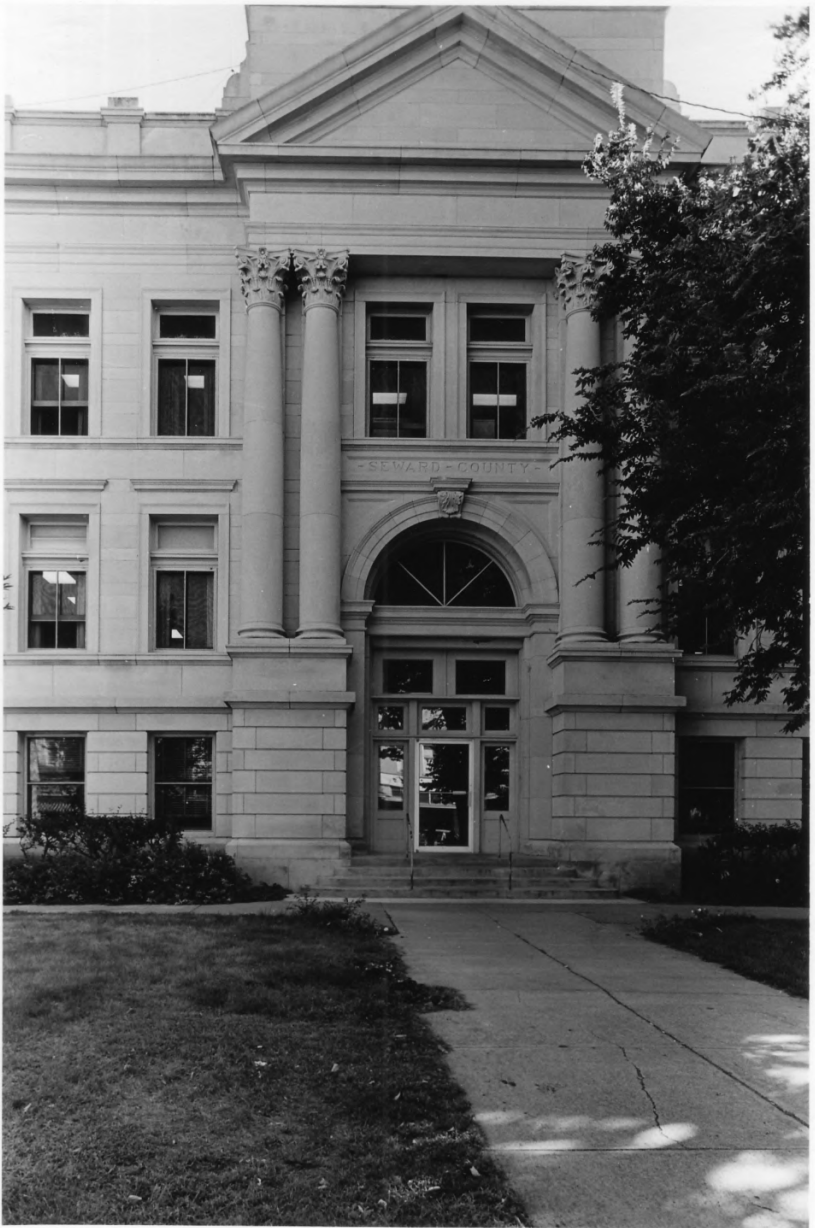
Nebraska State Historical Society Photo-
graph Collection,
S514

This photograph is supplied for research purposes only.
Permission to reproduce in any form must be obtained,
in writing, from the NEBRASKA STATE HISTORICAL
SOCIETY. Responsibility regarding questions of copyright,
photographic releases, and invasion of privacy that may
arise from the use this copy is assumed by the recipient.
In the event of publication, the credit line must read:

Nebraska State Historical Society

123.4 - 11 51

224



#2 of 36 Photographs

Photo 2

Seward County Courthouse Square Historic District; Seward, Seward Co., Nebraska.

Seward County Courthouse (SW09-93), central bays, photographer facing north, Sept., 1979.

Joni Lidolph, Nebraska State Historical Society,
7909/3:35

NSHS 7909/3:35 (JL) SEPT 1979, SW09-93 (DET. N)
5 48-8 58-8/6 091



#3 of 36 Photographs

Photo 3

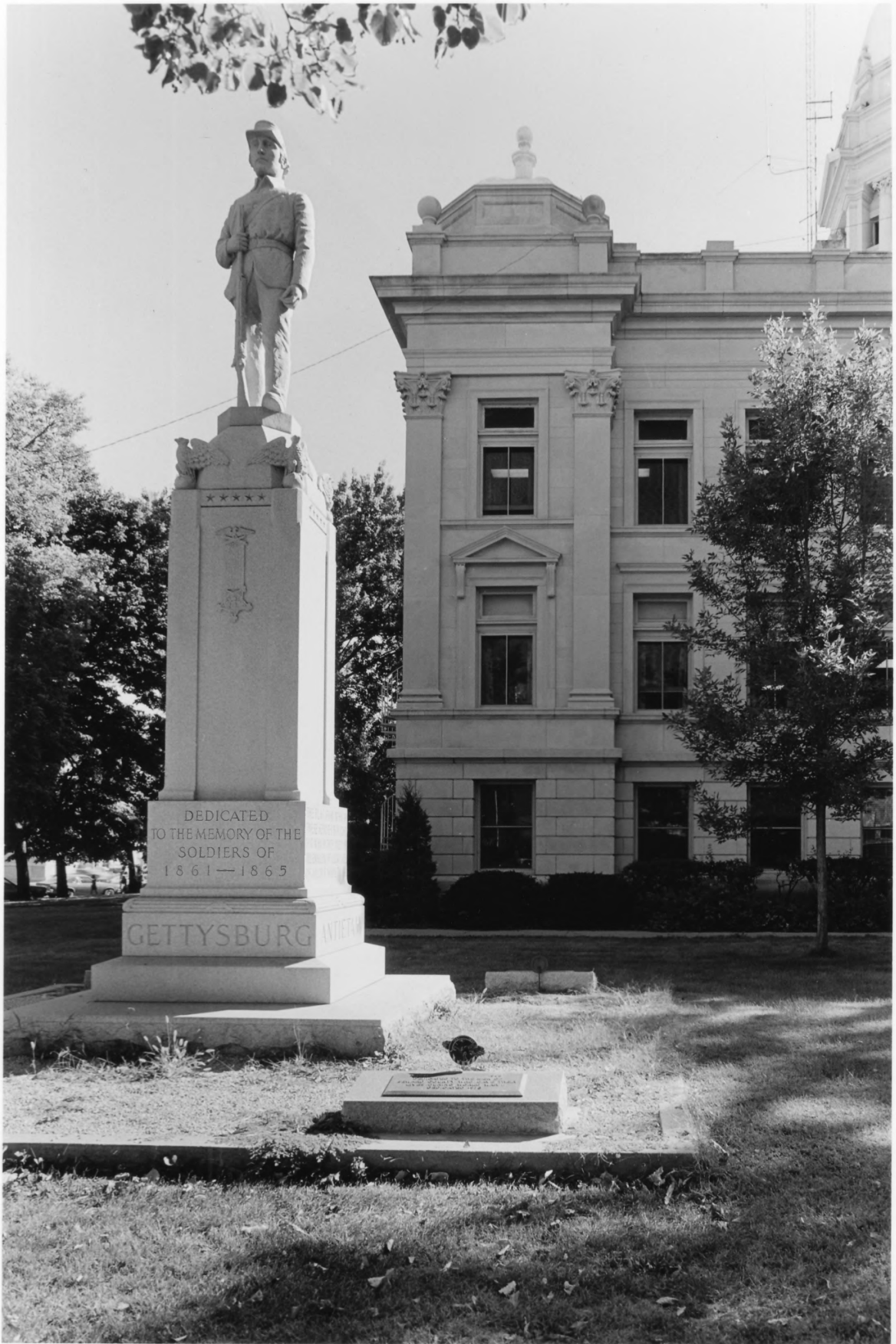
Seward County Courthouse Square Historic District; Seward, Seward Co., Nebraska.

Seward Co. Courthouse (SW09-93), south facade, photographer facing southwest, Sept., 1979

Joni Lidolph, Nebraska St. Historical Society,
7909/3:36

NSHS 7909/3:36 (JL) SEPT 1979, SW09-93 (DET. S + NW)

160
9/3-36
1-32
23-1



NSHS 7909/3:33

SEWARD COUNTY COURTHOUSE AND
CIVIL WAR MONUMENT
SEWARD, SEWARD CO., NEBR.

DETAIL, LOOKING SOUTH.

PHOTO BY JONI LIDOLPH, NSHS

#4 of 36 Photographs

Photo 4

Seward County Courthouse Square Historic
District; Seward, Seward Co., Nebraska.

Northeast corner of Courthouse Square
(SW09-93), photographer facing south,
Sept., 1979.

Joni Lidolph, Nebraska St. Historical
Society,
7909/3:33



#5 of 36 Photographs

Photo 5

Seward County Courthouse Square Historic
District; Seward, Seward Co., Nebraska.

Husker Beverage Building, (SW09-129),
629 Jackson Street. Photographer facing
southwest, Sept., 1979

^{JJS}
Joni Lidolph, Nebraska State Historical
Society,
NSHS 7907/3:34a

160
+
1/3-35A
2-49
51

NSHS 7907/3:35A (JJS), JULY 1979, SW09-129 (->5)



Large multi-paned window on the second floor, left side.

Large multi-paned window on the second floor, middle-left section.

Large multi-paned window on the second floor, middle-right section.

Large multi-paned window on the second floor, right side.

Large multi-paned window on the second floor, far right side.

Window with curtains on the ground floor, left side.

Advertisement window on the ground floor, middle-left section. Text: "WE'RE DEALING ON TOUGH CHEVY VANS TOUGH FUN VANS".

Advertisement window on the ground floor, middle-right section. Text: "CHEVY IS NATIONWIDE CELEBRATION".

Advertisement window on the ground floor, right side. Text: "1930 CITATION".

Window with a white roll-up door on the ground floor, far right side.

Tall, thin sign on the roof of the building.

034 DM 7906-26 1002-10 S1

DM 7906-26

#6 of 36 Photographs

Photo 6

Seward County Courthouse Square Historic District; Seward, Seward Co., Nebraska.

Zimmerer-Rolfsmeier Building (SW09-130), 139 North 6th Street; photographer facing west; June, 1979.

David Murphy; Lincoln, Nebraska
DM 7906-26.

DM 7906-26

ZIMMERER BUILDING
(ROLFSMEIER MOTORS)

SIXTH & JACKSON STREETS, SW COR.

WEST FACADE, LOOKING WEST.

SW09-130

PHOTO BY D. MURPHY, LINCOLN, NEBR.



#7 of 36 Photographs

Photo 7

Seward County Courthouse Square Historic District; Seward, Seward Co., Nebraska.

View looking east along Seward Street from 7th Street; June, 1979.

SW09-137, 136, 135, and 134 on left;
SW09-143, 144, 145, 146, and 147 on right.

David Murphy; Lincoln, Nebraska,
DM 7906-16

DM 7906-16

VIEW LOOKING EAST ALONG SEWARD
STREET FROM SEVENTH ST.
SEWARD, SEWARD CO., NEBR.

SW09-137, 136, 135, 134, 145 etc

PHOTO BY D. MURPHY, LINCOLN, NEBR.

DM 7906-16

634 DM 7609-17 1273-10



JOHN ZIMMERER
HARDWARE,
Stoves & Tinware.
DEBEN
BARB WIRE
&
STUDEBAKER
WAGONS.

BENEFIT

#8 of 36 Photographs

Photo 8

Seward County Courthouse Square Historic District; Seward, Seward Co., Nebraska.

Detailed view of Zimmerer Building (SW09-136) at 616 and 622 Seward Street; photographer facing northeast; Sept., 1979.

Joni Lidolph, Nebraska State Historical Society,
NSHS 7907/3:30

NSHS 7909/3:30 (JL) SEPT 1979, SW09-136 (DET SW)

15 58-8 CE-816 09/16



#9 of 36 Photographs

Photo 9

Seward County Courthouse Square Historic District; Seward, Seward Co., Nebraska.

Hedden-Woods Building on right; Goehner Building on left (SW09-139 and 140); 640-44 and 648 Seward Street. Photographer facing northeast; Sept., 1979,

Joni Lidolph, Nebraska St. Historical Society,

NSHS 7909/3:31

NSHS 7909/3:31 (JL) SEPT 1979, SW09-140 (SW)
18-816

(S

718-8071

091



S514

Exterior of Goehner Store, Seward,
Seward County, Nebraska.

#10 of 36 Photographs

226

Photo 10:

Seward County Courthouse Square Historic
District; Seward, Seward Co., Nebraska.

Historic view; Goehner Building,
Hedden-Woods Building, and 636 Seward St.
(SW09-140, 139, and 138)

View facing northeast, photographer unknown,
ca. 1900.

Nebraska State Historical Society Photo-
graph Collection,
S514

103490

51

This photograph is supplied for research purposes only. Permission to reproduce in any form must be obtained, in writing, from the NEBRASKA STATE HISTORICAL SOCIETY. Responsibility regarding questions of copyright, photographic releases, and invasion of privacy that may arise from the use this copy is assumed by the recipient. In the event of publication, the credit line must read:

Nebraska State Historical Society



#11 of 36 Photographs

Photo 11

Seward County Courthouse Square Historic
District; Seward, Seward Co., Nebraska.

Roberts Building (SW09-141)
Southeast corner, 7th and Seward
Photographer facing southeast.

^{JJS}
Joni Lidolph, Nebraska State Historical
Society,
NSHS 7907/3:30A

160
7/3 30A
2-45
5,

NSHS 7907/3:30A (JJS) JULY 1979, SW09-141 (NNW)



#12 of 36 Photographs

Photo 12

Seward County Courthouse Square Historic District; Seward, Seward Co., Nebraska.

View looking southeast on Seward Street. Right to left; portion of SW09-142, 143, 144, 145, 146, and 147; courthouse (93) dome in background; June, 1979.

David Murphy; Lincoln, Nebraska
DM 7906-19

DM 7906-19

SEWARD COUNTY COURTHOUSE AND ENVIRONS
SEWARD, SEWARD CO., NEBR.

VIEW LOOKING SOUTHEAST WITH TISHUE BLOCK
IN FOREGROUND = SW09-93, 147

PHOTO BY D. MURPHY, LINCOLN, NEBR.

5 6-2-1971

034 DM7906-19 730



ROSWING
SHOES

SOUCEK & KIMBLE
ATTORNEYS AT LAW

SHOE R

DM 7906-22

#13 of 36 Photographs

Photo 13

Seward County Courthouse Square Historic District; Seward, Seward Co., Nebraska.

Part of Tishue Block (SW09-144),
623 Seward Street; June, 1979
Photographer facing south.

David Murphy; Lincoln, Nebraska
DM 7906-22

DM 7906-22

PART OF TISHUE BLOCK
S.S. SEWARD, W. OF 6th ST.
SEWARD, SEWARD CO., NEBR.

SW09-144

NORTH FACADE

PHOTO BY D. MURPHY, LINCOLN, NEBR.

DM 7906-22 15 91 2071 22-90 66 wd bed



ELECTRIC
SUPPLIES

SHOE REPAIR

WE CAN SAVE
YOUR CAR

#14 of 36 Photographs

Photo 14

Seward County Courthouse Square Historic District; Seward, Seward Co., Nebraska.

Portion of Tishue Block (SW09-146),
611 Seward Street; June, 1979,
Photographer facing south.

David Murphy; Lincoln, Nebraska,
DM 7906-20.

DM 7906-20

TISHUE BLOCK (DETAIL) SW09-146
SIXTH & SEWARD STREETS, SW COR.
SEWARD, SEWARD CO., NEBR.

NORTH FACADE

PHOTO BY D. MURPHY, LINCOLN, NEBR.

034 DM 609 20 750
15 6-2071



DM 7906-27

#15 of 36 Photographs

Photo 15

Seward County Courthouse Square Historic District; Seward, Seward Co., Nebraska.

West side of Sixth Street between Seward and Main Streets; photographer facing southeast; June, 1979.
SW09-147-155.

David Murphy; Lincoln, Nebraska.
DM 7906-27

DM 7906-27

WEST SIDE OF COURTHOUSE SQUARE
SEWARD, SEWARD CO., NEBR.

VIEW LOOKING SOUTHWEST.

LEFT TO RIGHT SITES # 155, 154, 153,
152, 151, 150, 149, 148, 147

PHOTO BY D. MURPHY, LINCOLN, NEBR.

15-51-2471

DM 7906-27

034



No. 2

West Side of Square

Seward Nebr.

S514

West Side of Square, Seward,
Seward County, Nebraska.

226

#16 of 36 Photographs

1213-115

Photo 16

Seward County Courthouse Square Historic
District; Seward, Seward Co., Nebraska.

West side of Sixth Street between Seward
and Main Streets; Historic view, early
1890s'.

Nebraska State Historical Society Photo-
graph Collection,
S514

This photograph is supplied for research purposes only. Permission to reproduce in any form must be obtained, in writing, from the NEBRASKA STATE HISTORICAL SOCIETY. Responsibility regarding questions of copyright, photographic releases, and invasion of privacy that may arise from the use this copy is assumed by the recipient. In the event of publication, the credit line must read:

Nebraska State Historical Society



#17 of 36 Photographs

Photo 17

Seward County Courthouse Square Historic District; Seward, Seward Co., Nebraska.

Masonic Building (SW09-155), center of photo; SW corner 6th & Main Streets; July, 1979.

J.J. Spencer, Nebraska State Historical Society,
NSHS 7907/3:1a

NSHS 7907/3:1A (JJS), JULY 1979, SW09-155 (se)

160

7/3 1A

1-40

51



#18 of 36 Photographs

Photo 18

Seward County Courthouse Square Historic District; Seward, Seward Co., Nebraska.

Seward Lumber Company Building (SW09-156), NW corner 7th & Main; photographer facing northwest; Sept., 1979.

Joni Lidolph, Historic Preservation Office, Nebraska State Historical Society.
7909/3:25

NSHS 7909/3:25 (JL) SEPT 1979, SW09-156 (SW)

160
9/3-25
Q-30

5)



#19 of 36 Photographs

Photo 19

Seward County Courthouse Square Historic
District; Seward, Seward Co., Nebraska.

Former Anderson Veterinarian Hospital
(SW09-158), NW corner 6th & South Streets;
photographer facing northwest; Sept., 1979.

Joni Lidolph, Historic Preservation Office,
Nebraska State Historical Society.
NSHS 7909/3:23

NSHS 7909/3:23 (JL) SEPT 1979, SW09-158 (→nw)

160

9/3-23

2-23

31



#20 of 36 Photographs

Photo 20

Seward County Courthouse Square Historic District; Seward, Seward Co., Nebraska.

City Hall (SW09-162), SE corner 6th & Main; photographer facing southeast; July, 1979.

J.J. Spencer, Historic Preservation Office
Nebraska State Historical Society.

NSHS 7907/3-23a

160

7/3-23A

51

NSHS 7907/3: 23A (JJS) JULY 1979, SW09-162 (NNW)



#21 of 36 Photographs

Photo 21

Seward County Courthouse Square Historic District; Seward, Seward Co., Nebraska.

Left to right: SW09-163 (525 Main St.); 164 (517 Main); and 165 (513 Main).

Photographer facing south; July, 1979.

J.J. Spencer, Historic Preservation Office,
Nebraska State Historical Society,
NSHS 7909/3:21a

NSHS 7909/3:21A (JJS) JULY, 1979, SW09-163, 164, 165 (→S)

160

713-21A

2-472

51



CAMPBELL'S
SEED HOUSE

#22 of 36 Photographs

Photo 22

Seward County Courthouse Square Historic District; Seward, Seward Co., Nebraska.

Left to right: Squires-Campbell Building (SW09-168), 236 South 5th; Former Coal Building (SW09-169), 230 South 5th.

Photographer facing east; Sept., 1979.

Joni Lidolph, Historic Preservation Office,
Nebraska State Historical Society
NSHS 7909/3:19

NSHS 7909/3:19 (JL) SEPT 1979, SW09-168, 169 (W)

160

9/3-19

2-16

5)



#23 of 36 Photographs

Photo 23

Seward County Courthouse Square Historic District; Seward, Seward Co., Nebraska.

Right to left: Carnegie Library (SW09-172); Property at 216 South 5th (SW09-171); and City Steam Laundry (SW09-170): YMCA/Auditorium behind Library.

SE Corner, Main & 5th; photographer facing southeast; Sept., 1979.

Joni Lidolph, Historic Preservation Office,
State Historical Society
NSHS 7909/3:17

NSHS 7909/3:17 (JL) SEPT 1979, SW09-170, 171, 172, 173 (NW)

169

9/3-17

2-16

51



#24 of 36 Photographs

Photo 24

Seward County Courthouse Square Historic
District; Seward, Seward Co., Nebraska.

Right to left: SW09-175, 198, 174;
NE corner 5th & Main;
Photographer facing northeast; July, 1979.

J.J. Spencer, Historic Preservation Office,
Nebraska State Historical Society.

NSHS 7907/3:18a

160

7/3-18A

51

NSHS 7907/3:18A (JJS), JULY 1979, SW09-174 (SW)



#25 of 36 Photographs

Photo 25

Seward County Courthouse Square Historic District; Seward, Seward Co., Nebraska.

Left to right: portion of SW09-198, SW09-175, SW09-176, and portion of SW09-177.

East side of 5th Street between Main and Seward; photographer facing east; Sept., 1979

Joni Lidolph, Historic Preservation Office, Nebraska State Historical Society.

NSHS 7909/3:15

160

9/3-15

2-12

31

NSHS 7909/3:15 (JL), SEPT 1979, SW09-175, 176 (W)



#26 of 36 Photographs

Photo 26

Seward County Courthouse Square Historic District; Seward, Seward Co., Nebraska.

Right to left: Cattle National Bank (intrusion), SW09-177, and portion of SW09-176. SE corner 5th & Seward.

Photographer facing southeast; July, 1979.

J.J. Spencer, Historic Preservation Office,
Nebraska State Historical Society.
NSHS 7907/3:15a

NSHS 7907/3:15A (JJS) JULY 1979, SW09-178 (NW)

160
7/3-15A
21



034 DM7906-25 1202-17 51

DM7906-25

#27 of 36 Photographs

Photo 27

Seward County Courthouse Square Historic District; Seward, Seward Co., Nebraska.

Goehner Building (SW09-181, 182), NE corner Seward and Fifth Streets
Photographer facing northeast; June, 1979,

David Murphy; Lincoln, Nebraska;
DM 7906-25.

DM 7906-25

GOEHNER BUILDING
NE COR FIFTH & SEWARD STREETS
SEWARD, SEWARD CO., NEBR.

SW09-182, 181

GEORGE A. BERLINGHOFF, ARCHITECT.

PHOTO BY D. MURPHY, LINCOLN, NEBR.



#28 of 36 Photographs

Photo 28

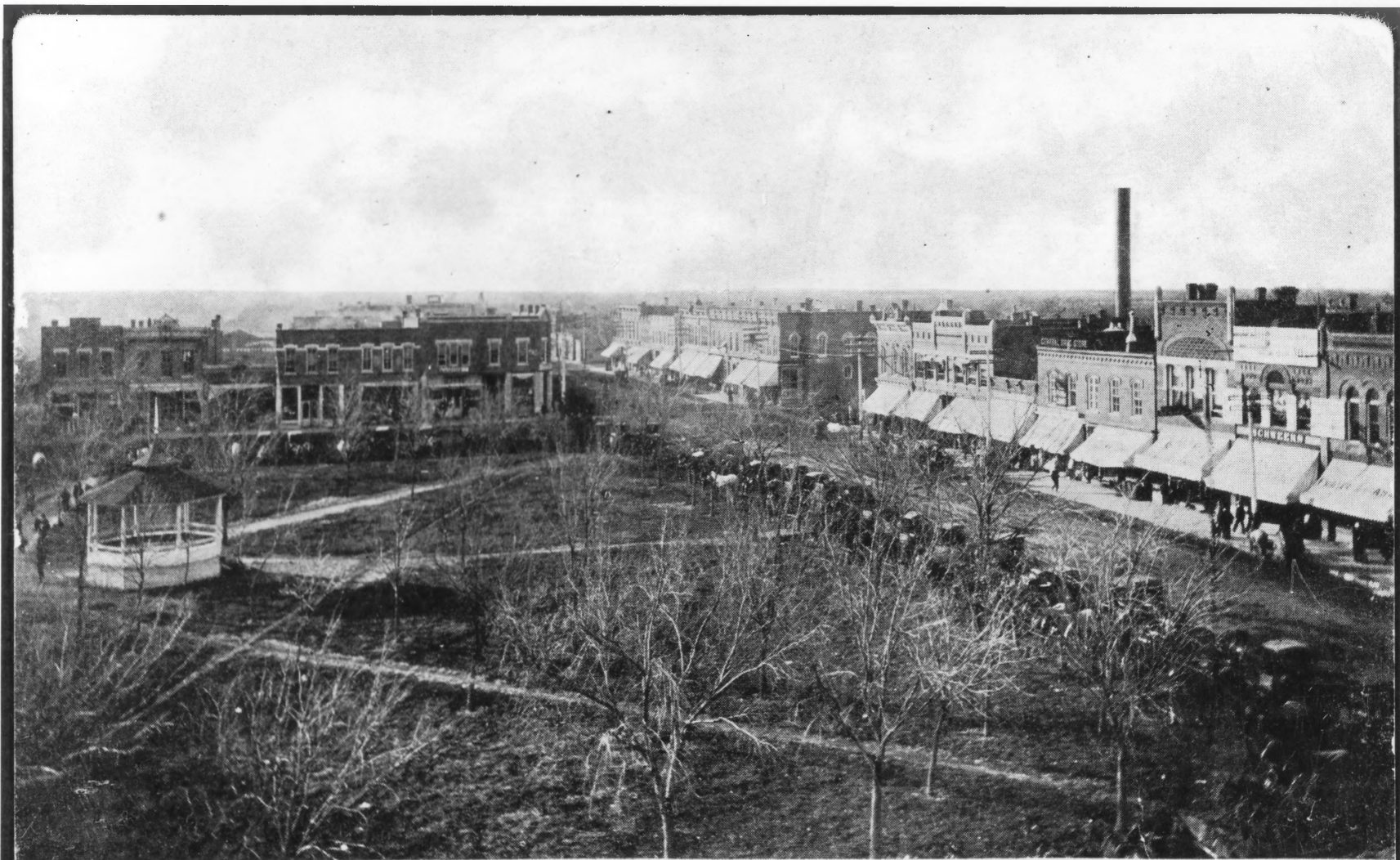
Seward County Courthouse Square Historic District; Seward, Seward Co., Nebraska.

SW09-186 in center of photo;
SW09-187 at left;
SW corner Jackson & 5th Streets,
photographer facing west; Sept., 1979.

Joni Lidolph, Historic Preservation Office,
Nebraska State Historical Society
NSHS 7909/3:10

NSHS 7909/3:10 (JL) SEPT 1979, SW09-186, 187 (YW FROM BONDSTAND)

16D
913-10
2-14
3



A Winter Day in Seward, Neb.

S514

A Winter Day in Seward, Seward
County, Nebraska.

#29 of 36 Photographs

Photo 29

Seward County Courthouse Square Historic
District; Seward, Seward Co., Nebraska.

Intersection of Sixth & Seward Streets in
center of photo; future site of Seward
Co. Courthouse in foreground; photographer
facing northwest; 1890s'; photographer
unknown.

Nebraska State Historical Society Photo-
graph Collection
S514

This photograph is supplied for research purposes only.
Permission to reproduce in any form must be obtained,
in writing, from the NEBRASKA STATE HISTORICAL
SOCIETY. Responsibility regarding questions of copyright,
photographic releases, and invasion of privacy that may
arise from the use this copy is assumed by the recipient.
In the event of publication, the credit line must read:

Nebraska State Historical Society

226

1283-11

51



Lands

ROGERS SHOELAND
EVERY PAIR FIT WITH CARE

NORVAL BROS.
ATTORNEYS

JACK C. ORAFF
for Agent

#30 of 36 Photographs

Photo 30

Seward County Courthouse Square Historic District; Seward, Seward Co., Nebraska.

North side of Seward Street between 5th & 6th Streets; left to right; SW09-192, 191, 190, 189, & 188.

Photographer facing northeast; June, 1979.

David Murphy; Lincoln, Nebraska
DM 7906-23

034

DM 7609-23

LN 2-17 5.

DM 7906-23

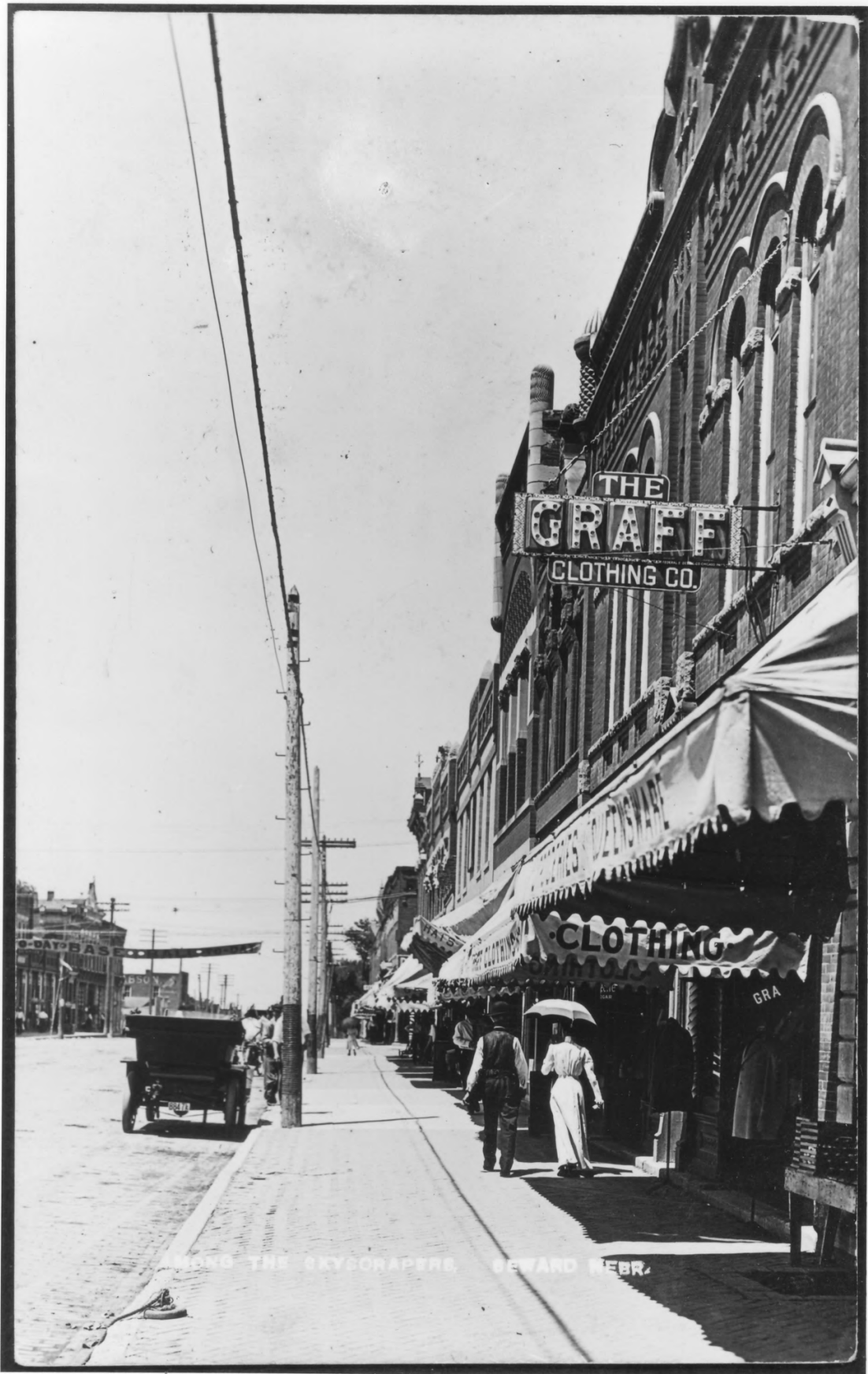
Photo #17
Pencil

DM 7906-23

NORTH SIDE, COURTHOUSE SQUARE
SEWARD, SEWARD CO., NEBR.

VIEW LOOKING NORTHEAST FROM
COURTHOUSE SQ. SW. L-R:
SW09-192, 191, 190, 189

PHOTO BY D. MURPHY, LINCOLN, NEBR



AMONG THE SKYSCRAPERS, GEWARD NEBR.

S514

Among the Skyscrapers, Seward,
Seward County, Nebraska.

#31 of 36 Photographs

Photo 31

Seward County Courthouse Square Historic
District; Seward, Seward Co., Nebraska.

North side of Seward St. between 5th & 6th
Streets; SW09-189 in foreground; view facing
west; photographer unknown; early 1900s'.

Nebraska State Historical Society Photograph
Collection,
S514

This photograph is supplied for research purposes only.
Permission to reproduce in any form must be obtained,
in writing, from the NEBRASKA STATE HISTORICAL
SOCIETY. Responsibility regarding questions of copyright,
photographic releases, and invasion of privacy that may
arise from the use this copy is assumed by the recipient.
In the event of publication, the credit line must read:

Nebraska State Historical Society



#32 of 36 Photographs

Photo 32

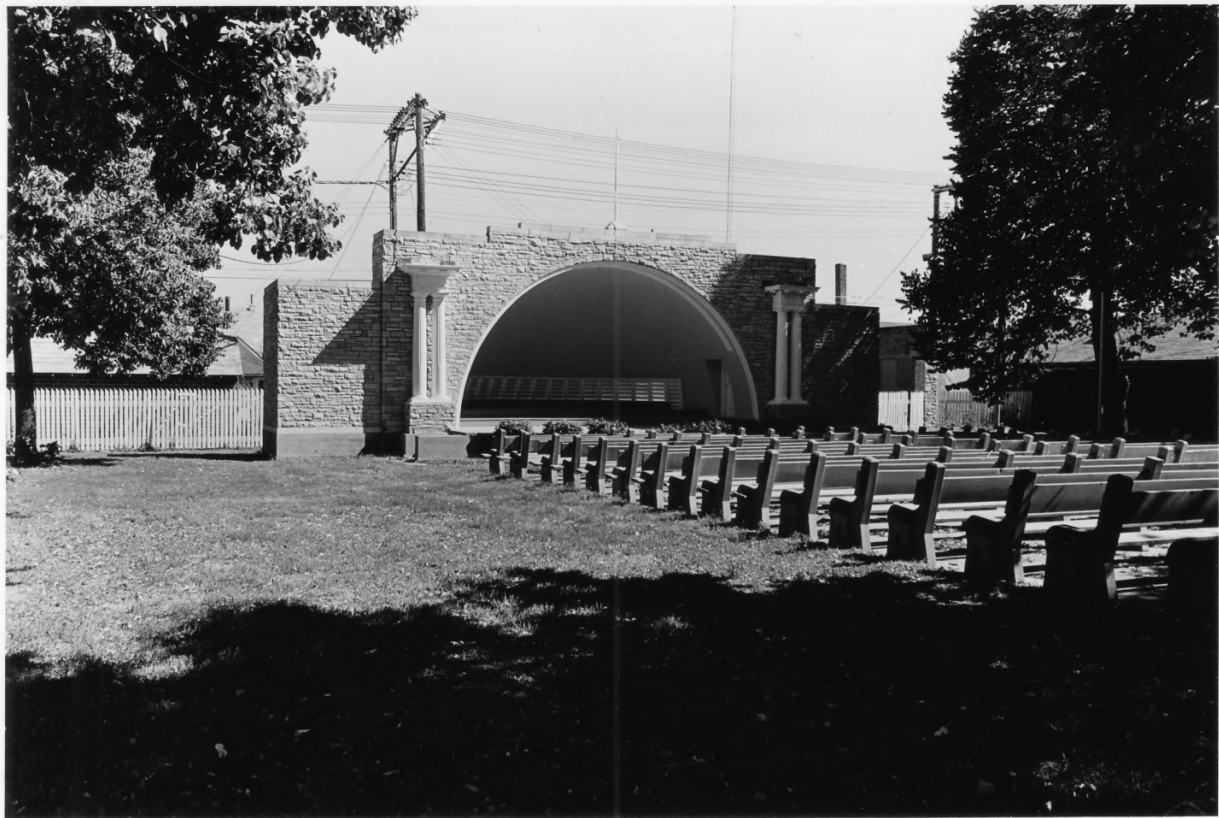
Seward County Courthouse Square Historic District; Seward, Seward Co., Nebraska.

NE corner, 6th & Seward Streets; Peter Goehner Building (SW09-195), 546 Seward St. in center of photo; Abner Davis Building (SW09-194), 540 and 544 Seward St. on right.

Photographer facing northeast; July, 1979; J.J. Spencer, Historic Preservation Office, Nebraska State Historical Society
-NSHS 7907/3:10a

NSHS 7907/3:10A (JJS) JULY 1979, SW09-194, 195 (SW)

160
713-10A
A-50
90



#33 of 36 Photographs

Photo 33

Seward County Courthouse Square Historic District; Seward, Seward Co., Nebraska.

Seward Bandstand (SW09-196), Bandstand Park, SE corner 5th & Jackson; photographer facing east-southeast; Sept, 1979.

Joni Lidolph, Historic Preservation Office, Nebraska State Historical Society, NSHS 7909/3:9

160
9/3-9
188-12
5

NSHS 7909/3:9 (JL) SEPT 1979, SW09-196 (→e)



#34 of 36 Photographs

Photo 34
Seward County Courthouse Square Historic
District; Seward, Seward Col., Nebr.

Graphic on wall of Masonic Building
(SW09-155). Photographer facing north;
September, 1979.

Joni Lidolph, Historic Preservation
Office, Nebraska State Historical
Society

7909/3:27

191
0913-27



#35 of 36 Photographs

Photo 35

Seward County Courthouse Square Historic
District; Seward, Seward Co., Nebraska.

East side of 5th Street between Seward
and Main; SWo9-168 on right. Photographer
facing northeast; September, 1979.

Joni Lidolph, Historic Preservation Office,
Nebraska State Historical Society

7909/3:20

191
09/3-20

31

U N I T E D S T A T E S
P O S T O F F I C E



#36 of 36 Photographs

Photo 36
Seward County Courthouse Square Historic
District; Seward, Seward Co., Nebraska.

U.S. Post Office (SW09-166), SW corner
5th & Main Streets; Photographer facing
south; July, 1979.

Joni Lidolph, Historic Preservation Office,
Nebraska State Historical Society

7907/3:190

191
07/3-19A
51