



**Cambria Iron Company
Blacksmith Shop
Lower Works
Johnstown, Pennsylvania**



**Cambria Iron Company
Rolling Mill Office,
Pattern Shop, left
Lower Works**






Cambria Iron Company
Merchant Mill
Lower Works
Johnstown, Pennsylvania



**Cambria Iron Company
Blowing Engine House
Lower Works
Johnstown, Pennsylvania**



**Cambria Iron Company
Compressor Engine House
Lower Works
Johnstown, Pennsylvania**



Cambria Iron Company
Hot Blast Engine House
Lower Works
Johnstown, Pennsylvania



PHOTO H

Cambria Iron Company

Works Order Office

Lower Works

Johnstown, Pennsylvania

Jet Lowe

April 1987

HAER negative #PA-109-34



PHOTO A
Cambria Iron Company
Cooperage
Rod and Wire Plant
Johnstown, Pennsylvania
Gray Fitzsimons
August 1988
HAER

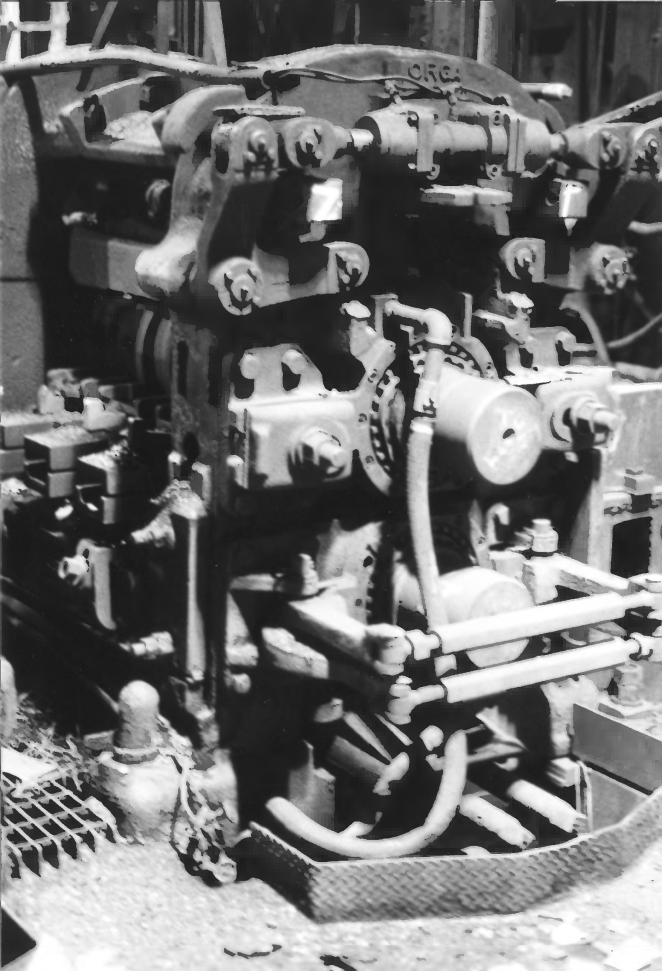


PHOTO B

Cambria Iron Company

Rod Mill, interior, Morgan Rod Mill

Rod and Wire Plant

Johnstown, Pennsylvania

Gray Fitzsimons

August 1988

HAER

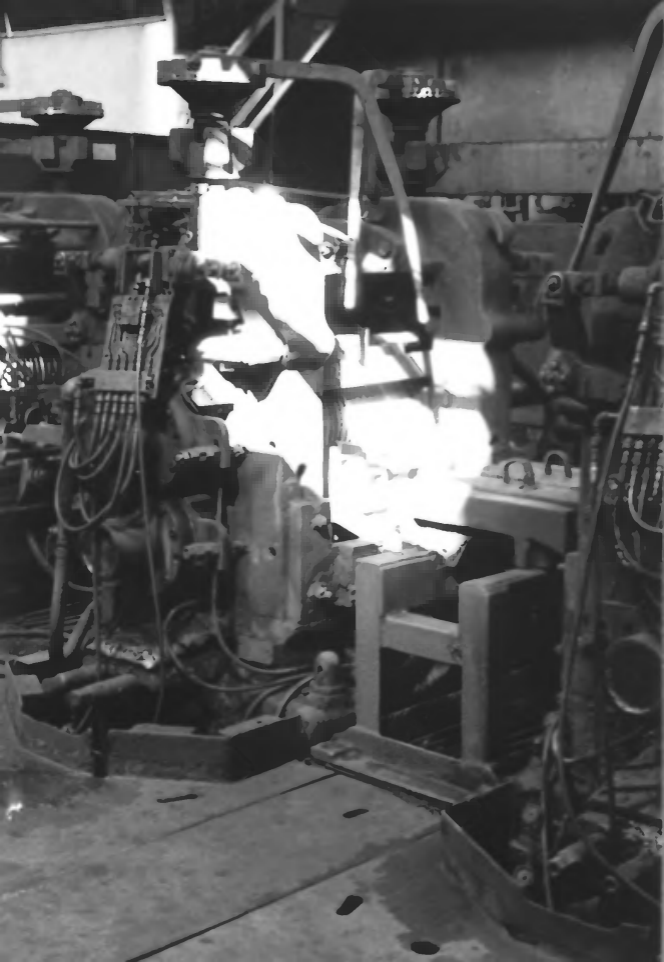


PHOTO C

Cambria Iron Company

Rod Mill, interior, Morgan Rod Mill

Rod and Wire Plant

Johnstown, Pennsylvania

Gray Fitzsimons

August 1988

HAER

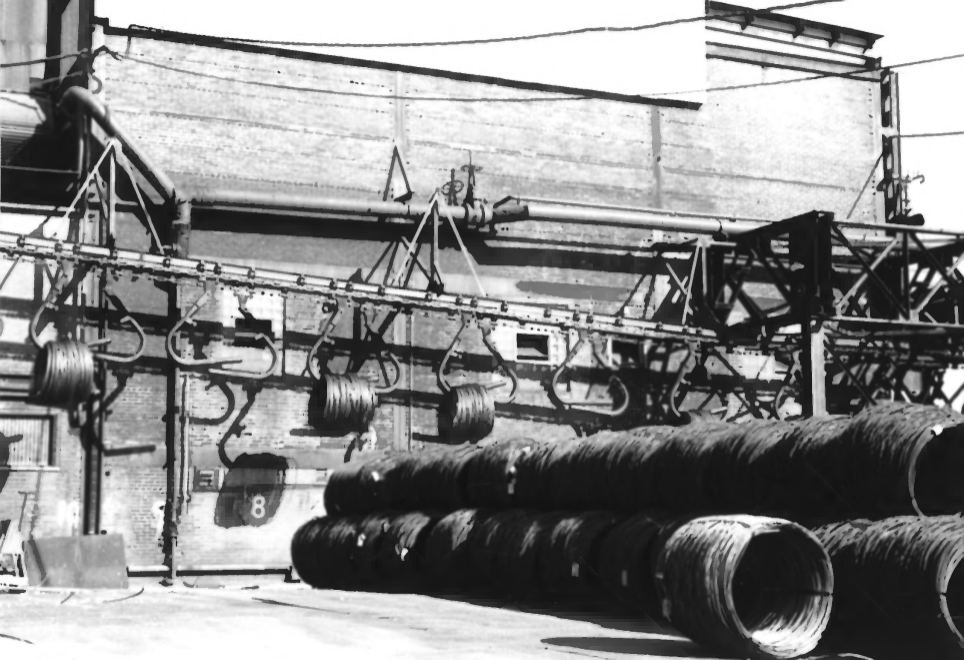


PHOTO D

Cambria Iron Company

Rod Mill, exterior, hook conveyor

Rod and Wire Plant

Johnstown, Pennsylvania

Gray Fitzsimons

August 1988

HAER

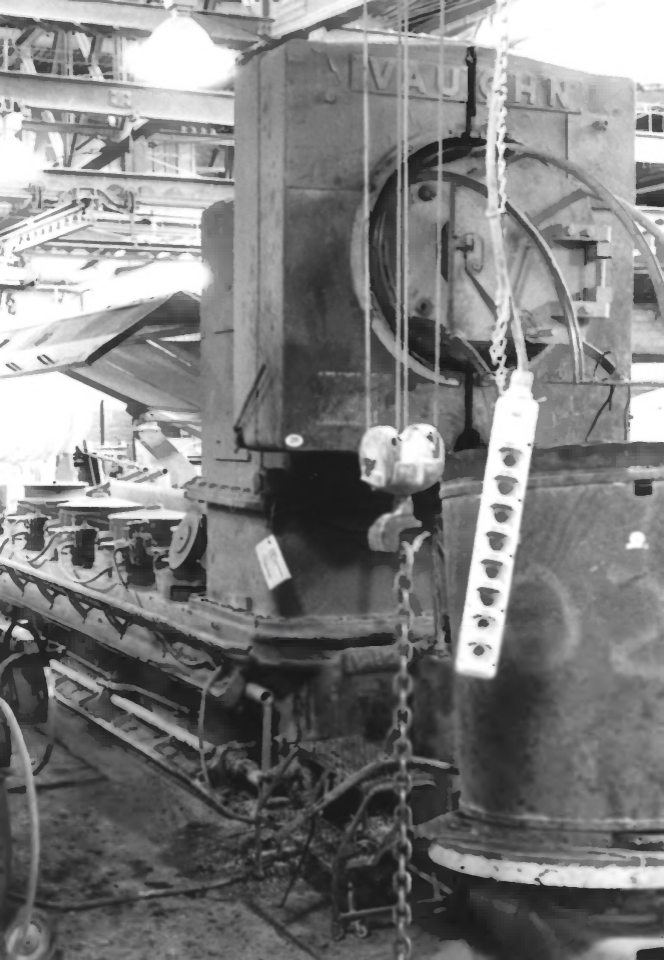


PHOTO E

Cambria Iron Company

Cleaning, Baking, Drawing and
Annealing Department, Vaughn
wire drawing machine

Rod and Wire Plant

Johnstown, Pennsylvania

Gray Fitzsimons

August 1988

HAER



PHOTO F

Cambria Iron Company

Annealing Room, interior

Rod and Wire Plant

Johnstown, Pennsylvania

Gray Fitzsimons

August 1988

HAER



PHOTO G
Cambria Iron Company
Annealing Room, interior
Rod and Wire Plant
Johnstown, Pennsylvania
Gray Fitzsimons
August 1988
HAER



PHOTO H

Cambria Iron Company

Fence and Barb Wire Department,
interior

Rod and Wire Plant

Johnstown, Pennsylvania

Gray Fitzsimons

August 1988

HAER



STOP
14

PHOTO I
Cambria Iron Company
Experimental Bethanizing Plant,
Electroplating
Rod and Wire Plant
Johnstown, Pennsylvania
Gray Fitzsimons
August 1988
HAER

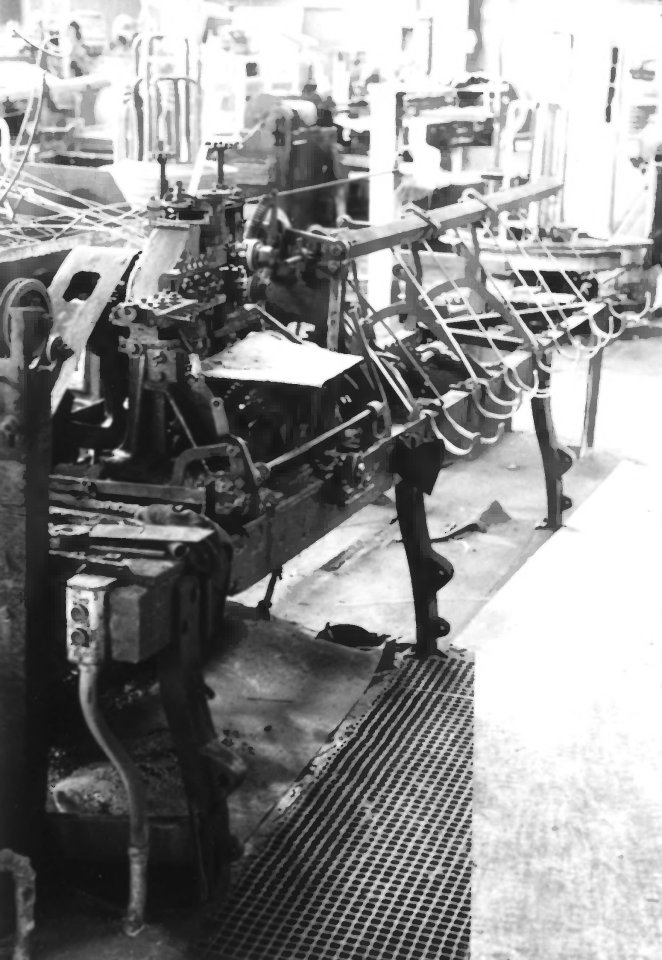


PHOTO J

Cambria Iron Company

Warehouse, machinery

Rod and Wire Plant

Johnstown, Pennsylvania

Gray Fitzsimons

August 1988

HAER



PHOTO K

Cambria Iron Company

Warehouse, interior

Rod and Wire Plant

Johnstown, Pennsylvania

Gray Fitzsimons

August 1988

HAER



PHOTO L

Cambria Iron Company

Billet Yard

Rod and Wire Plant

Johnstown, Pennsylvania

Gray Fitzsimons

August 1988

HAER

Quality
ROD & WIRE
BETHLEHEM STEEL CO.
Bethlehem can supply it
on Time!
75¢
GATE 12

STOP



PHOTO M

Cambria Iron Company

Guard House

Rod and Wire Plant

Johnstown, Pennsylvania

Gray Fitzsimons

August 1988

HAER



PHOTO A

Cambria Iron Company

Roll Shop

Gautier Plant

Johnstown, Pennsylvania

Gray Fitzsimons

August 1988

HAER

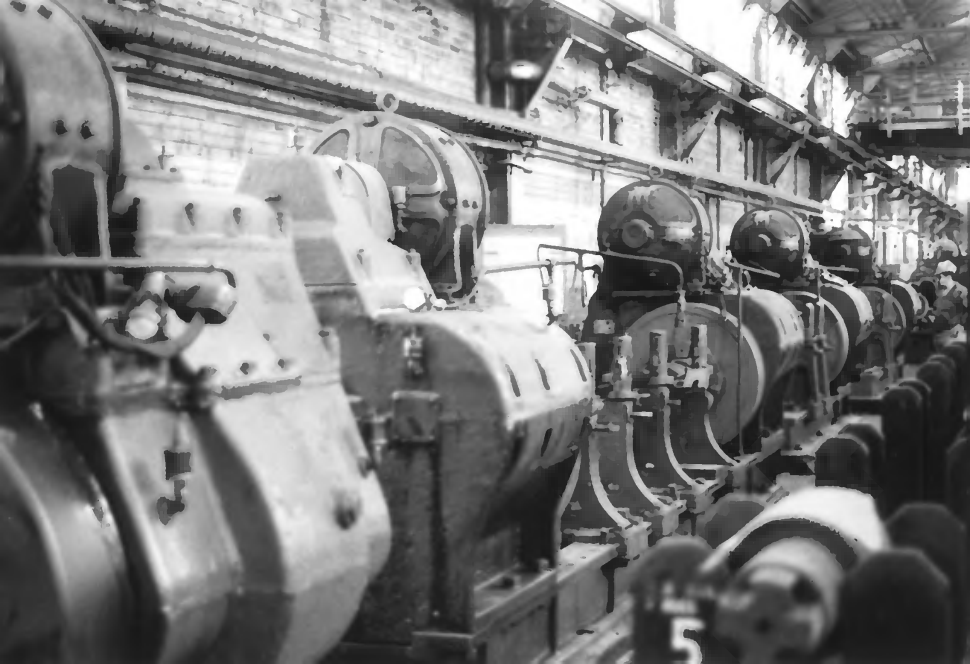


PHOTO B

Cambria Iron Company

Roll Shop, interior

Gautier Plant

Johnstown, Pennsylvania

Gray Fitzsimons

August 1988

HAER



PHOTO C

Cambria Iron Company

Warehouse Offices and Drawing Room

Gautier Plant

Johnstown, Pennsylvania

Gray Fitzsimons

August 1988

HAER



PHOTO D

Cambria Iron Company

Office

Gautier Plant

Johnstown, Pennsylvania

Gray Fitzsimons

August 1988

HAER



PHOTO E
Cambria Iron Company
Storage Building
Gautier Plant
Johnstown, Pennsylvania
Gray Fitzsimons
August 1988
HAER



PHOTO F

Cambria Iron Company

Stock House, Bar Bending

Gautier Plant

Johnstown, Pennsylvania

Gray Fitzsimons

August 1988

HAER



PHOTO G

Cambria Iron Company

9-inch Mill No. 2, interior

Gautier Plant

Johnstown, Pennsylvania

Gray Fitzsimons

August 1988

HAER

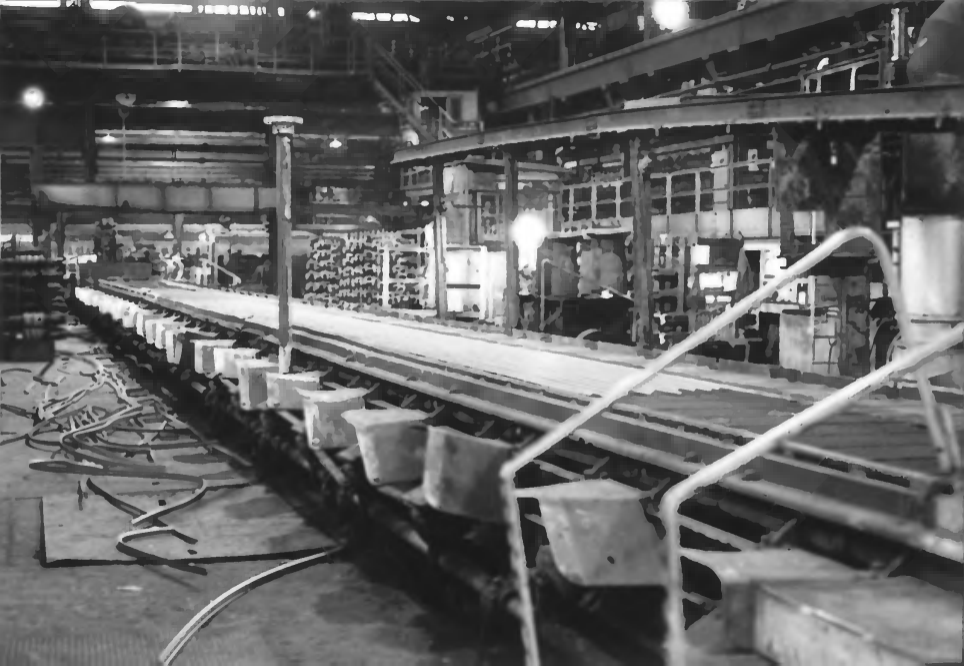


PHOTO H

Cambria Iron Company

9-inch Mill No. 2, interior

Gautier Plant

Johnstown, Pennsylvania

Gray Fitzsimons

August 1988

HAER



PHOTO I

Cambria Iron Company

Motor House

Gautier Plant

Johnstown, Pennsylvania

Gray Fitzsimons

August 1988

HAER



PHOTO A

Cambria Iron Company

Franklin Plant overview

Franklin Plant

Franklin, Pennsylvania

Gray Fitzsimons

August 1988

HAER



PHOTO B

Cambria Iron Company

Open Hearth Furnace Shop, Electric

Furnaces

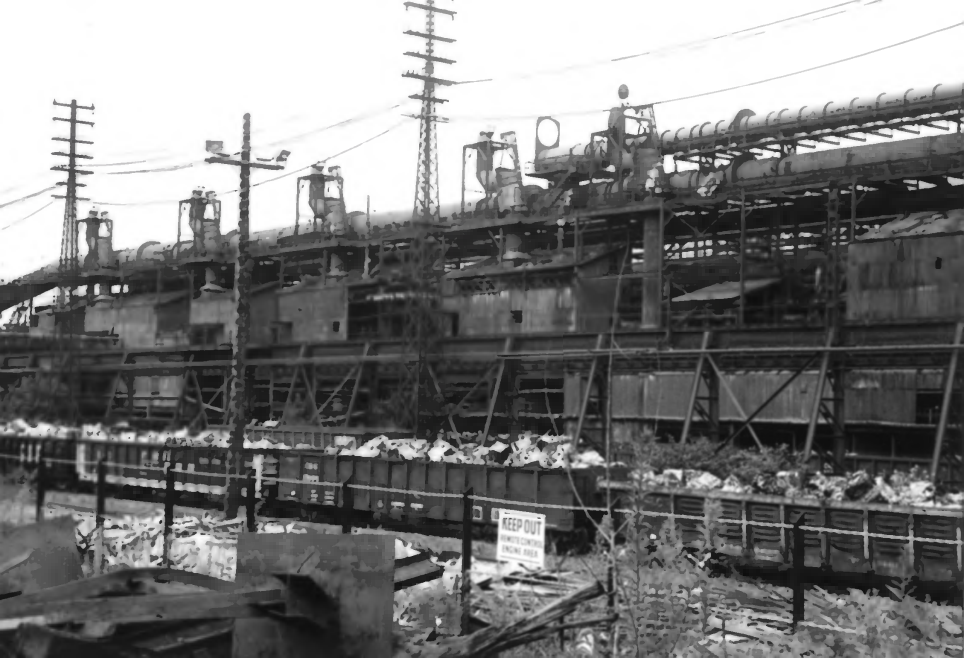
Franklin Plant

Franklin, Pennsylvania

Gray Fitzsimons

August 1988

HAER



KEEP OUT
LIMITED CONTROL
ENGINE AREA

PHOTO C

Cambria Iron Company

Open Hearth Furnace Shop

Franklin Plant

Franklin, Pennsylvania

Gray Fitzsimons

August 1988

HAER



PHOTO D

Cambria Iron Company

Open Hearth Furnace Shop, interior

Franklin Plant

Franklin, Pennsylvania

Gray Fitzsimons

August 1988

HAER



PHOTO E

Cambria Iron Company

Open Hearth Furnace Shop, interior

Franklin Plant

Franklin, Pennsylvania

Gray Fitzsimons

August 1988

HAER



PHOTO F
Cambria Iron Company
Open Hearth Ingot Mold Storage
Building
Franklin Plant
Franklin, Pennsylvania
Gray Fitzsimons
August 1988
HAER



PHOTO G
Cambria Iron Company
Gate House, Power House
Franklin Plant
Franklin, Pennsylvania
Gray Fitzsimons
August 1988
HAER



PHOTO H

Cambria Iron Company

No. 2 Power Station

Franklin Plant

Franklin, Pennsylvania

Gray Fitzsimons

August 1988

HAER



PHOTO I

Cambria Iron Company

Steam Station

Franklin Plant

Franklin, Pennsylvania

Gray Fitzsimons

August 1988

HAER



PHOTO J

Cambria Iron Company

Blowing Engine House

Franklin Plant

Franklin, Pennsylvania

Gray Fitzsimons

August 1988

HAER



PHOTO K

Cambria Iron Company

Ore Yard

Franklin Plant

Franklin, Pennsylvania

Gray Fitzsimons

August 1988

HAER



PHOTO L

Cambria Iron Company

Sulphate Storage Building

Franklin Plant

Franklin, Pennsylvania

Gray Fitzsimons

August 1988

HAER



PHOTO M

Cambria Iron Company

Coke Plant Repair Shop

Franklin Plant

Franklin, Pennsylvania

Gray Fitzsimons

August 1988

HAER



PHOTO N

Cambria Iron Company

46-inch Blooming Mill and
Soaking Pits Building

Franklin Plant

Franklin, Pennsylvania

Gray Fitzsimons

August 1988

HAER



PHOTO 0

Cambria Iron Company

Engine House

Franklin Plant

Franklin, Pennsylvania

Gray Fitzsimons

August 1988

HAER



PHOTO P

Cambria Iron Company

No. 1 Stock House and

No. 2 Stock House

Franklin Plant

Franklin, Pennsylvania

Gray Fitzsimons

August 1988

HAER



PHOTO Q

Cambria Iron Company

134-inch Plate Mill

Franklin Plant

Franklin, Pennsylvania

Gray Fitzsimons

August 1988

HAER



PHOTO R

Cambria Iron Company

Shipping Building

Franklin Plant

Franklin, Pennsylvania

Gray Fitzsimons

August 1988

HAER



PHOTO S

Cambria Iron Company

Wheel Assembly & Axle Finishing
Mill, left

Shearing Shed No. 1, right

Franklin Plant

Franklin, Pennsylvania

Gray Fitzsimons

August 1988

HAER

LEHIGH STEEL

JOHNSTOWN PLANT



PHOTO T
Cambria Iron Company
Stores
Franklin Plant
Franklin, Pennsylvania
Gray Fitzsimons
August 1988
HAER



BETHLEHEM STEEL
TRUCK CAB DIVISION

PHOTO U

Cambria Iron Company

Works Office

Franklin Plant

Franklin, Pennsylvania

Gray Fitzsimons

August 1988

HAER



PHOTO V

Cambria Iron Company

Machine Shop

Franklin Plant

Franklin, Pennsylvania

Gray Fitzsimons

August 1988

HAER



PHOTO W

Cambria Iron Company

Forge Shop

Franklin Plant

Franklin, Pennsylvania

Gray Fitzsimons

August 1988

HAER



KEEP
OFF

SUBSTATION No. 21

PHOTO X

Cambria Iron Company

Structural Shop

Franklin Plant

Franklin, Pennsylvania

Gray Fitzsimons

August 1988

HAER



PHOTO Y

Cambria Iron Company

Woodworking Shop, left

Pipe Shop, right

Franklin Plant

Franklin, Pennsylvania

Gray Fitzsimons

August 1988

HAER



PHOTO Z

Cambria Iron Company

Power Transformers and Accumulator

Franklin Plant

Franklin, Pennsylvania

Gray Fitzsimons

August 1988

HAER



PHOTO A
Cambria Iron Company
Steel Receiving and Preparation
Building, forging press
Wheel Plant
Franklin, Pennsylvania
Gray Fitzsimons
August 1988
HAER



PHOTO B

Cambria Iron Company

Steel Receiving and Preparation

Building, interior

Wheel Plant

Franklin, Pennsylvania

Gray Fitzsimons

August 1988

HAER



PHOTO C

Cambria Iron Company

Heat Treating Buildings

Wheel Plant

Franklin, Pennsylvania

Gray Fitzsimons

August 1988

HAER

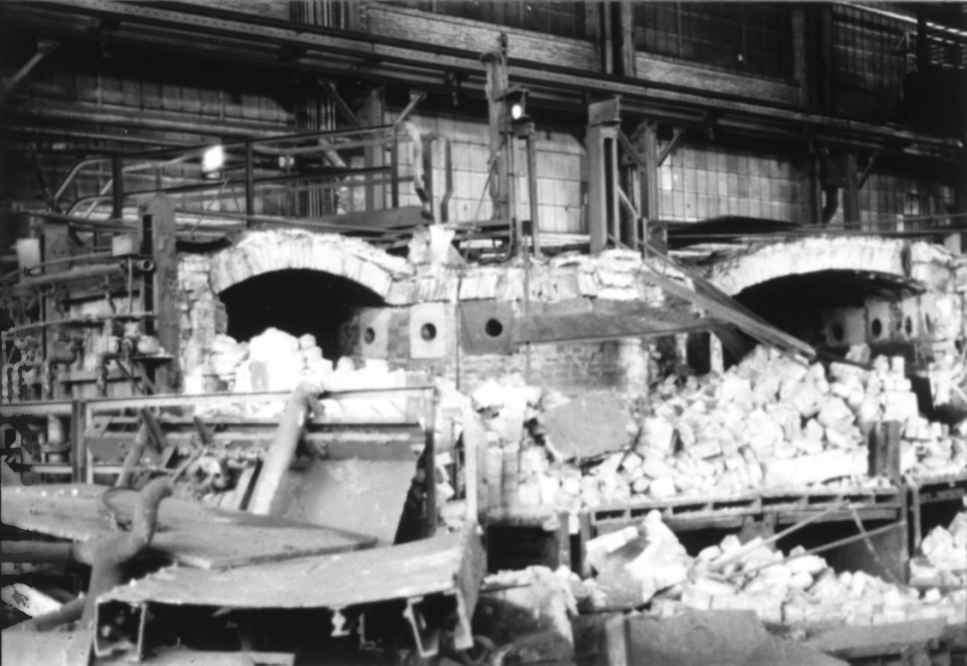


PHOTO D

Cambria Iron Company

Heat Treating Buildings, interior

Wheel Plant

Franklin, Pennsylvania

Gray Fitzsimons

August 1988

HAER



PHOTO E

Cambria Iron Company

Wheel Finishing Shop and Shipping

Building, interior

Wheel Plant

Franklin, Pennsylvania

Gray Fitzsimons

August 1988

HAER

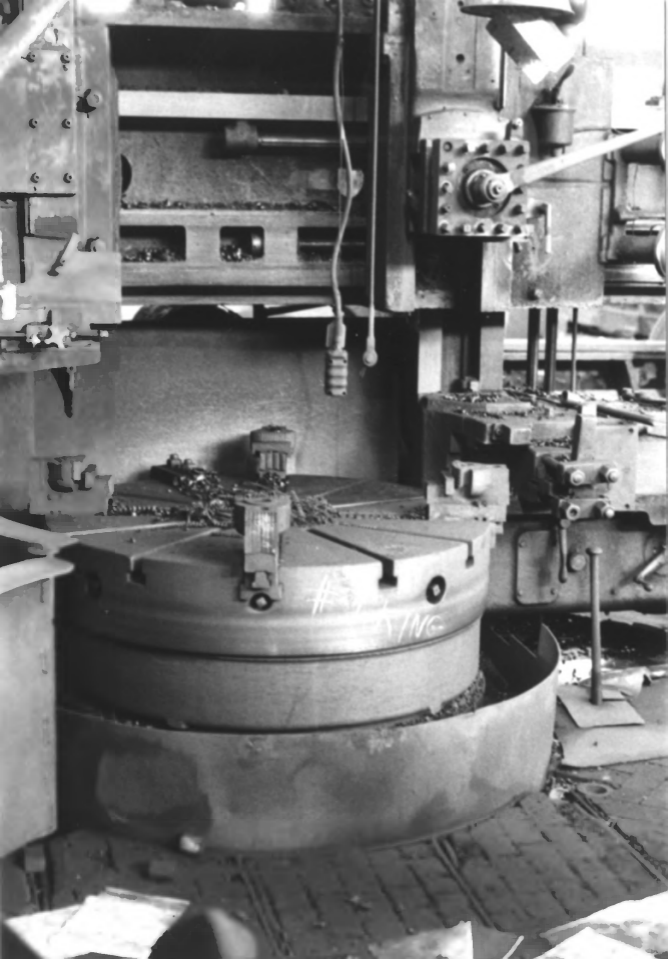


PHOTO F

Cambria Iron Company

Wheel Finishing Shop and Shipping

Building, King tracer lathe

Wheel Plant

Franklin, Pennsylvania

Gray Fitzsimons

August 1988

HAER

PHOTO G

Cambria Iron Company

Wheel Finishing Shop and Shipping
Building, Niles-Bement vertical
car wheel machine

Wheel Plant

Franklin, Pennsylvania

Gray Fitzsimons

August 1988

HAER