

(Rev. 10-90)

United States Department of the Interior  
National Park Service

National Register of Historic Places  
Registration Form



5/12

This form is for use in nominating or requesting determinations for individual properties and districts. See instructions in How to Complete the National Register of Historic Places Registration Form (National Register Bulletin 16A). Complete each item by marking "X" in the appropriate box or by entering the information requested. If any item does not apply to the property being documented, enter "N/A" for "not applicable." For functions, architectural classification, materials, and areas of significance, enter only categories and subcategories from the instructions. Place additional entries and narrative items on continuation sheets (NPS Form 10-900a). Use a typewriter, word processor, or computer, to complete all items.

1. Name of Property

historic name Lowell Cemetery

other names/site number \_\_\_\_\_

2. Location

street & number 984 Lawrence Street n/a not for Publication

city or town Lowell N/A vicinity

state Massachusetts code MA county Middlesex code 017 zip code 01852

3. State/Federal Agency Certification

As the designated authority under the National Historic Preservation Act of 1986, as amended, I hereby certify that this  nomination  request for determination of eligibility meets the documentation standards for registering properties in the National Register of Historic Places and meets the procedural and professional requirements set forth in 36 CFR Part 60. In my opinion, the property  meets  does not meet the National Register Criteria. I recommend that this property be considered significant  nationally  statewide  locally. (See continuation sheet for additional comments.)

Judith B. McDonough  
Signature of certifying official/Title Judith B. McDonough, Executive Director  
Massachusetts Historical Commission, State Historic Preservation Officer

4/10/98  
Date

State or Federal agency and bureau

In my opinion, the property  meets  does not meet the National Register criteria. (See continuation sheet for additional Comments.)

Signature of certifying official/Title

Date

State or Federal agency and bureau

4. National Park Service Certification

- I, hereby certify that this property is:
  - entered in the National Register
    - See continuation sheet.
  - determined eligible for the National Register
    - See continuation sheet.
  - determined not eligible for the National Register
  - removed from the National Register
  - other (explain):

Signature of the Keeper

Date of Action

Edson H. Beall

5-20-98

Lowell Cemetery  
Name of Property

Middlesex, Massachusetts  
County and State

### 5. Classification

#### Ownership of Property

(Check as many boxes as apply)

(Check only one box)

- private  
 public-local  
 public-State  
 public-Federal

- building(s)  
 district  
 site  
 structure  
 object

#### Number of Resources within Property

(Do not include previously listed resources in the count.)

Contributing	Noncontributing	
2	1	buildings
1		sites
14		structures
36		objects
53	1	Total

#### Name of related multiple property listing

(Enter "N/A" if property is not part of a multiple property listing.)

N/A

#### Number of contributing resources previously listed in the National Register

0

### 6. Function or Use

#### Historic Functions

(Enter categories from instructions)

Funerary: Cemetery  
\_\_\_\_\_  
\_\_\_\_\_  
\_\_\_\_\_  
\_\_\_\_\_  
\_\_\_\_\_

#### Current Functions

(Enter categories from instructions)

Funerary: Cemetery  
\_\_\_\_\_  
\_\_\_\_\_  
\_\_\_\_\_  
\_\_\_\_\_  
\_\_\_\_\_

### 7. Description

#### Architectural Classification

(Enter categories from instructions)

\_\_\_\_\_  
\_\_\_\_\_  
\_\_\_\_\_  
\_\_\_\_\_  
\_\_\_\_\_

#### Materials

(Enter categories from instructions)

foundation \_\_\_\_\_  
walls \_\_\_\_\_  
\_\_\_\_\_  
roof \_\_\_\_\_  
other \_\_\_\_\_  
\_\_\_\_\_

#### Narrative Description

(Describe the historic and current condition of the property on one or more continuation sheets.)

(See continuation sheet)

United States Department of the Interior  
National Park ServiceNational Register of Historic Places  
Continuation SheetLowell Cemetery  
Lowell (Middlesex), MASection number 7 Page 1

---

**7. DESCRIPTION**

Lowell Cemetery was established in 1841, and is a fine example of the "rural" cemetery movement on the mid-19<sup>th</sup> century. This romantic movement began in the United States with the establishment in 1831 of Mt. Auburn Cemetery in Cambridge, and was based on gardening and landscaping principles in vogue in France and England. Naturalistically landscaped sites, taking advantage of vistas from steep elevations and rolling terrain with curving paths were accentuated by the use of varied ornamental features.

Lowell Cemetery is located in the southeastern part of Lowell on a roll 84.43 acre tract on the southeast slope of Fort Hill overlooking the Concord River to the west. Approximately 73 acres of this tract are nominated, with the remainder being undeveloped reserve land. Lowell is located in northeastern Massachusetts in Middlesex County, approximately 25 miles north of Boston. The cemetery's naturalistic appearance is enhanced by being bounded to the north, east and south by Fort Hill Park, the Shedd Playground, and undeveloped land of the city of Lowell. Lawrence Street extends along the cemetery's southwest boundary, and the Concord River is adjacent to the northwest.

An 1841 plan of the Lowell Cemetery was designed by civil engineer George P. Worcester, using a combination of straight avenues and curvilinear pathways characteristic of garden cemetery design. Worcester's plan utilized the site's hills to create vistas. Washington Avenue encircled the cemetery, extending on a straight east-west line at the north and south edges, while curving around the more irregular boundaries at the cemetery's east and west ends. Other major straight arteries included Franklin and Oberlin Avenues (east-west), and Wilberforce and Howard Avenues (north-south), while those that curved were Fenelon and Tuckerman Avenues. In addition to curving roads and paths, several circles were incorporated in the plan, most notably one for the site of the chapel. Also incorporated in the plan were several ponds, to be developed from swampy areas. Grave sites were shown on the plan with ample space between them to allow for plantings and open spaces. Many corner lots were larger and designated for the use of organizations such as churches and fraternal groups.

The Lowell Cemetery site features the type of hilly, varied natural terrain favored by the garden cemetery movement. The northwestern portion of the cemetery is located on the southeast slope of Fort Hill, providing an elevated section of the cemetery, including a bluff with views of the Concord River. Two other steep hills are located in the southeastern area. Indian Ridge extends along the north side of Fenelon Avenue. Swampy areas designated on the 1841 plan as ponds were located immediately north and east of the main entrance, southwest of the chapel, and at the east end of the cemetery near the junction of Oberlin and Washington Avenues. Several other

(continued)

United States Department of the Interior  
National Park ServiceNational Register of Historic Places  
Continuation SheetLowell Cemetery  
Lowell (Middlesex), MASection number 7 Page 2

areas were designated to remains as greens; these were located at the northeast and southeast corners of the cemetery.

In 1850 a new survey was prepared by civil engineers Butterfield and Clark. While the new plan remained generally the same as the Worcester plan, changes included the reduction in size and number of the proposed ponds. In addition to the previously identified greens, numerous undeveloped areas were shown covered with trees, suggesting the intention to maintain them as naturally wooded areas. The 1850 plan identified a large circular lot at the west end of Franklin Avenue as the O.M. Whipple lot, with a sizable rectangular lot to its south set aside as the Hospital lot. Other lots were designated for the use of various organizations.

The main entrance to Lowell Cemetery remains at its original Lawrence Street location (1862, Photo #1, map #4), while a later entry, the Belvidere Gate, was built in 1905 (map #7). The monumental main gate was designed in 1861 by Brookline architect C.W. Painter, and erected in 1862. It is a tripartite structure of rock-faced granite ashlar, consisting of a large central round-headed arch flanked by a pair of pedestrian-scale arches. Each section has a bracketed cornice and is capped by scrollwork. Above the main arch is a smaller arch containing the cemetery bell, and a cartouche above containing the date of the cemetery's establishment (1840) on the west side and the date of construction (1862) on the east side. An anthemion ornaments the peak. Iron gates exist in each of the arched openings, and a granite wall extends between the gate and the nearby Superintendent's Office to the south. Extending along Lawrence Street north of the main gate is a handsome cast iron fence, while an iron fence set on a granite curb extends south of the gate (ca. 1862, Photo #1, map #6). Continuing north along the Concord River is a granite retaining wall.

The Belevedere Gate was a 1905 addition to the cemetery, and is located at the northeast corner where the cemetery abuts Knapp Street and the adjacent historic Belvidere neighborhood. The gate was constructed of Cape Ann granite, with posts in the form of large square columns capped by granite urns. The ornamental iron fence extends southeast and west from the gate. Much of the remaining boundary (along the south and east) is marked by chain link fencing, while the northern boundary is unmarked, being a line set 40' north of the graves along the north side of Washington Avenue.

The cemetery contains two contributing buildings, both designed by Lowell and Boston architect Frederick Stickney. The Talbot Memorial Chapel (1885, Photo #2, map #3) IS A SIMPLE Gothic Revival style building constructed of rock-faced granite. It has a cross-gable roof, and round-arched windows. Early photographs show a porte-cochere which was removed at a later date. This chapel replaced a smaller octagonal structure erected in 1848 on the same site. That structure was constructed of wood, encircled by a veranda with cast iron columns, and capped by a high octagonal roof. Similar in design to the chapel, the Superintendent's Office (map #2) was

(continued)

United States Department of the Interior  
National Park ServiceNational Register of Historic Places  
Continuation SheetLowell Cemetery  
Lowell (Middlesex), MASection number 7 Page 3

built in 1887. It is a small, rock-faced granite structure with a gable roof. Notable details include a round-arched window at the southwest end, and parapet gable ends.

Lowell Cemetery contains a rich collection of very fine examples of funerary art ranging in date from the establishment of the cemetery to the present. The assignment of lots was by random drawing. Those who preferred to select the location of their lot could pay an additional fee for that privilege. As a result of this system the entire cemetery is scattered with markers and monuments from all periods of its development.

In addition to the varied dispersal of markers from all periods, the Lowell Cemetery features markers, monuments and mausoleums illustrating many styles of design. While the earliest markers were often slate, and simple in form and ornamentation, the use of marble and granite increased rapidly, and monuments reflected the eclectic styles of the mid-nineteenth through the early twentieth century, with the rich and varied decorative treatments favored during that time. Architectural styles represented in the mausoleums and larger monuments include the High Victorian Gothic, neo-Classical, Egyptian Revival and Art Deco styles.

Some of the earliest markers in Lowell Cemetery are round-headed slate legers carved with such characteristic funerary elements as willow trees, urns, and classical ornamentation. These slate markers generally pre-date the establishment to the cemetery, and indicate the frequency of reburials. An example of these is the stone of Benjamin Walker (1840, map 348). It is a round-headed slate leger carved with a willow and urn. The inscription is carved on an oval with four columns in the background. Walker was reburied in Lowell Cemetery in 1893.

AS the use of marble for monuments became prevalent during the mid-nineteenth century, monuments were lavishly carved with sentimental motifs and inscriptions characteristic of the Romantic movement then underway. Funerary iconography has been well documented, and the symbolic meaning of the many images used will not be addressed here, however, mourners during this mid- to late-nineteenth century period were quick to use these motifs on the monuments of their loved ones. One example is the Danie W. Swett monument (1862), a marble monument in a Gothic-arched form with Gothic detail and richly carved with roses, lilies, and other floral ornamentation.

One of the finest structures in Lowell Cemetery is the Receiving Tomb (1891, Photo #13, map #44). Dedicated to the memory of Eli Hoyt Shedd, and given to the cemetery by his parents, Freeman B. and Amy F. Shedd, this Egyptian Revival style tomb was completed in 1891. Set on a rise at the head of a flight of granite steps, it is a granite ashlar structure with the characteristic battered walls, cavetto cornice, and robust columns supporting the projecting central portico. Its

(continued)

United States Department of the Interior  
National Park ServiceNational Register of Historic Places  
Continuation SheetLowell Cemetery  
Lowell (Middlesex), MASection number 7 Page 4

portico is embellished with a winged orb, and the grand stairway was originally flanked by a pair of bronze sphinx (later removed). In contrast with its Egyptian detail is the pair of bronze plaques ornamented with thistles. Like the Talbot Memorial Chapel and the Superintendent's Office, the Receiving Tomb was designed by Lowell architect Frederick W. Stickney.

Designed in a sparsely ornamented neo-Classical style, the Freeman Ballard Shed mausoleum (ca. 1913, map #45) was designed for the Shedd family. It is a granite ashlar cube with a shallow gable front, and features a pair of bronze doors set in a molded architrave. A wreath of carved above the door, which is flanked by a pair of large urns at the head of a flight of granite steps. Other notable mausoleums include the simple, Classically-detailed mausoleum of Dr. Moses Greely Parker (1917, map #39), which features a pair of seated, robed figures in bas-relief flanking a pair of handsome bronze doors; the unusual Theodore E. Parker mausoleum in a simple Gothic Revival design set high upon a hill (ca. 1930s, map #40), and the very vertical Dancause mausoleum, the only Art Deco style example of the type.

The Rogers tomb (ca. 1890, Photo #3, map #41), built into a natural rise, is constructed of monolithic granite blocks forming a simple pediment temple-front with marble doors. It is flanked by a granite retaining wall, and above is a marble obelisk.

Sculpture used for monuments varies from rustic work to the work of major artists. Natural boulders were used in some instances, including at the grave of James Stratton (1894), where a large stone resembling a whale's tail was removed from a wall at the Faulkner Mills.

Lowell Cemetery also has some less traditional forms used for monuments. Among these is the armchair at the grave of Horace Ebert, owner of a harness shop (ca. 1890s, Photo #8, map #25). The granite sculpture depicts Ebert's upholstered leather armchair with carved dog heads at the arms and an open book on the seat. Also unusual is the Baker/Brandt monument (1884, map #13), consisting of a large granite book lying on the ground as a base, with an open book standing upright on it.

Forms repeatedly used in nineteenth century monuments include tree stumps, sometimes ornamented with other symbols such as a cross, an anchor, and lilies, as was the case at the Hancock monument (date unknown, Photo #12, map #29).

The female form was frequently used in funerary sculpture, often in the form of an angel, and nearly always dressed in classical robes. Among the angles were the Gibby monument (ca. 1890, map #28), and the Snell monuments, while the Clark (date unknown, Photo #11, map #19) and Adams (1918, map #9) monuments are examples of images of grieving women.

(continued)

**United States Department of the Interior  
National Park Service****National Register of Historic Places  
Continuation Sheet****Lowell Cemetery  
Lowell (Middlesex), MA**Section number 7 Page 5

Severally nationally-known sculptors were commissioned to design some of Lowell Cemetery's finest works. The studio of Daniel Chester French designed "The Mill Girl," a monument on the grave of Louisa Wells (1906, Photo #10, map #51). Executed in Tennessee marble by French's associate, Evelyn Longman, the bas-relief represents an angel comforting an exhausted millworker holding a bobbin.

Frank E. Elwell and Frank Bacon teamed as sculptor and architect of the Bonney monument (ca. 1920, Photo #7, map #14). The Statue, entitled "New Life," is a bronze figure of a classically robed woman, whose outstretched arms hold open a cloak draped over her head. It is set in a neo-Classical structure and framed by a pair of Doric columns. Elwell was also responsible for the Lilly monument (1910, Photo #9, map #34), entitled "Genius of Memory," the figure of a seated woman with draped robes and closed eyes. Elwell's studio was in New York City, where he also served as curator of sculpture and Ancient Egyptian Art at the Metropolitan Museum. While identified in a published source as Frank Bacon, it is conceivable that the architect of the Bonney monument was Henry Bacon, who was the architect of the Lincoln Memorial in Washington, and worked with renowned sculptors Daniel Chester French and Augustus Saint Gaudens to design architectural settings for other statues.

The sarcophagus is another funerary structure found here. The sarcophagus of James C. Ayer (map #13) is capped with a life-sized ion sculpted by Englishman Price Joy. Designed by W. Liance Cottrell of Stonington, Connecticut, the granite F.C. Church sarcophagus (by 1936, map #18) was said to be a copy of one found in the Vatican.

The obelisk was another common monument type. These varied from the completely unadorned or minimally ornamented to the lavishly detailed. In the former category was the Marston obelisk (ca. 1867, map #35), with an inscribed base and crossed swords, a shield, and other symbols carved on the sides. The Taft monument (1875) illustrates the more ornate version of the form. It is carved in marble, with a base having Gothic arches, and tiny columns, supporting a column atop which sits a Gothic structure capped by a cross.

Several notable crosses are also found in Lowell Cemetery. Prominently sited on a hill is the tall granite cross marking the grave of John Jacob Rogers and Edith Nourse Rogers (1925, map #42). Rising from a granite ashlar base, it is a prominent landmark in the cemetery. The cross marking the grave of Wilfred Taylor (date unknown) is one of several Celtic crosses, and is intricately carved with Celtic designs.

(continued)

United States Department of the Interior  
National Park ServiceNational Register of Historic Places  
Continuation SheetLowell Cemetery  
Lowell (Middlesex), MASection number 7 Page 6

In addition to the nationally-recognized sculptors identified above, a number of local carvers are known to have work in Lowell Cemetery (dates are their working dates as found in Mourning Glory, a 1992 history of the Cemetery): Benjamin Day (1832-1858); Theodore Warren (1849-1859); David Nichols (1849-1870); H.W. Dresser (1851-1855); George Witherell (1858-1867); William Andrews (1858-1890); Charles Andrews (1880-1899); Charles Wheeler (1880-1911); Joseph Pinardi (1903- ); and William D. Colmer (1897- ).

While changes to the plan of Lowell Cemetery have been minimal during its century and a half of existence, increased use over the decades and other unavoidable pressures have resulted in some modifications. Construction in 1874 on the Lowell and Andover Railroad led to the loss of some land at the northwest and southwest edges of the cemetery. A foot entrance that had existed at the Concord River dam (northwest corner) and a house and barn for the Superintendent were lost to this undertaking, and the retaining wall along the river had to be rebuilt. Greenhouses were maintained at the cemetery until 1949 when they were removed due to the high cost of maintaining them. Improvements to Lawrence Street beginning in 1915 resulted in the removal of the Superintendent's house and related buildings. Another change to the cemetery was the gradual filling of the original ponds for use in burials.

**Archaeological Description**

At least one prehistoric site is present on the cemetery property and a high potential exists that additional sites will be found. A total of four prehistoric sites are recorded in the general area (within one mile) of the Lowell Cemetery including one site, 19-MD-52, located on the east bank of the Concord River in the northwestern portion of the cemetery. That site was recorded as a campsite and contained artifacts including pottery probably dating it to the transitional Archaic or later Woodland periods. Another site, 19-MD-32, is also located on the east bank of the Concord River south of Lawrence Street and the railroad. That site may extend into the southern portion of the cemetery. The physical environment at the cemetery include several locational criteria which are favorable for most types of prehistoric sites. Most of the cemetery includes hilly and varies terrain overlooking the Concord River approximately one to one and one half miles from it's confluence with the Merrimack River. This area includes several level to moderately sloping terraces , most of which are or were in close proximity to wetlands. Swampy areas and ponds, at least some of which were created from the swampy areas, were originally present in the cemetery locale north and east of the main cemetery entrance. These areas were filled in the 20th century to create new areas for graves. Given the above information and the size of the nominated cemetery area (73 acres), the presence of prehistoric sites on the cemetery property is documented with a high potential for additional sites to be found. Landscape changes in the cemetery including grave excavations have probably effected the integrity of archaeological resources in some areas.

(continued)

**United States Department of the Interior  
National Park Service**

**National Register of Historic Places  
Continuation Sheet**

**Lowell Cemetery  
Lowell (Middlesex), MA**

Section number 7 Page 7

---

There is also a high potential for the recovery of historic archaeological resources on the nominated cemetery property. Structural evidence may survive from the original superintendents house and related buildings (sheds, barn) which were removed in 1915 during improvements to Lawrence Street. Occupational related features, especially trash areas related to domestic use and cemetery activities may also survive. Structural remains may also exist for green houses used for the cemetery from 1852 to 1949. Evidence of an octagonal wooden chapel built in 1848 then replaced in 1885 may also exist. Unmarked graves possibly from unknown persons or paupers may also be present, particularly in peripheral areas of the cemetery.

(end)

Lowell Cemetery

Name of Property

Middlesex, Massachusetts

County and State

## 8. Statement of Significance

### Applicable National Register Criteria

(Mark "x" in one or more boxes for the criteria qualifying the property for National Register listing.)

- A** Property is associated with events that have made a significant contribution to the broad patterns of our history.
- B** Property is associated with the lives of persons significant in our past.
- C** Property embodies the distinctive characteristics of a type, period, or method of construction or represents the work of a master, or possesses high artistic values, or represents a significant and distinguishable entity whose components lack individual distinction.
- D** Property has yielded, or is likely to yield, information important in prehistory or history.

### Criteria Considerations

(Mark "x" in all the boxes that apply.)

Property is:

- A** owned by religious institution or used for religious purposes.
- B** removed from its original location.
- C** a birthplace or grave.
- D** a cemetery.
- E** a reconstructed building, object, or structure.
- F** a commemorative property.
- G** less than 50 years of age or achieved significance within the past 50 years.

### Narrative Statement of Significance

(Explain the significance of the property on one or more continuation sheets.)

## 9. Major Bibliographical References

(Cite the books, articles, and other sources used in preparing this form on one or more continuation sheets.)

### Previous documentation on file (NPS):

- preliminary determination of individual listing (36 CFR 67) has been requested
- previously listed in the National Register
- previously determined eligible by the National Register
- designated a National Historic Landmark
- recorded by Historic American Buildings Survey # \_\_\_\_\_
- recorded by Historic American Engineering Record # \_\_\_\_\_

### Areas of Significance

(Enter categories from instructions)

ART

ARCHITECTURE

COMMUNITY PLANNING AND DEVELOPMENT

LANDSCAPE ARCHITECTURE

### Period of Significance

1841-1947

### Significant Dates

1841

### Significant Person

(Complete if Criterion B is marked above)

N/A

### Cultural Affiliation

N/A

### Architect/Builder

BACON, FRANK, (Bonney monument, ca. 1920).

COTTRELL, W. LIANCE, (Church monument, bv 1936)

(see continuation sheet)

### Primary location of additional data:

- State Historic Preservation Office
- Other State Agency
- Federal agency
- Local government, Library, Town Hall
- University
- Other

Name of repository:

Lowell Cemetery Office

United States Department of the Interior  
National Park Service

# National Register of Historic Places Continuation Sheet

Lowell Cemetery  
Lowell (Middlesex), MA

Section number 8 Page 1

---

## Architect/Builder (Continued)

Elwell, Frank. Bonney monument (ca. 1920), Lilly monument (1910)

Joy, Price. James C. Ayer monument

Longman, Evelyn. Louisa Wells monument ("The Mill Girl", 1906)

Painter, C.W. Lawrence Street gate (1861)

Stickney, Frederick W. Talbot Memorial Chapel (1885), Superintendent's Office (1887), Eli

Hoyt Shedd Mausoleum (Receiving Tomb, 1891)

Worcester, George P. Cemetery designer (1841)

(continued)

United States Department of the Interior  
National Park ServiceNational Register of Historic Places  
Continuation SheetLowell Cemetery  
Lowell (Middlesex), MASection number 8 Page 2**8. STATEMENT OF SIGNIFICANCE**

Lowell Cemetery possesses integrity of location, design, materials, workmanship, feeling, and association and meets National Register Criteria A and C at the local level. Under Criterion A the cemetery is significant as it reflects the trend to incorporate elements of the rural in community planning during a period of rapid urbanization in Lowell. Lowell Cemetery meets Criterion C as a fine example of the "rural" cemetery movement, and for the excellent architecture of its mausoleums and high quality work of notable sculptors. Due to the quality of design and its association with broad patterns of Lowell's history the cemetery satisfies Criteria Consideration D. The period of significance extends from the establishment of the cemetery in 1841 to 1948 based on its continued use throughout that time and to the present.

Lowell's well-documented and rapid industrial transformation began in the 1820s when a group of Boston investors bought the shares of the Proprietors of Locks and Canals on the Merrimack River, and capitalizing on the water power found at Pawtucket Falls, developed a new system of locks and canals. The development associated with the new canals and mills led to a population boom in Lowell (incorporated in 1826). The expansion brought a population of 6,500 by 1830, and 21,000 by 1840. The growing population and rapidly expanding industry of the city led to an awareness by the city's leaders that burial grounds and open space were needed.

Several cemeteries were already in use in Lowell prior to the establishment of Lowell Cemetery. Among the earliest was the School Street cemetery of 1826. In 1832 an acre of land off Gorham Street was donated to the city, with half for use as the Old English cemetery, and half for the burial of Catholic residents. Sources refer to several other early burying grounds, some of which were in areas included in other communities prior to expansions of Lowell's boundaries. These earlier burying grounds include the Pawtucketville plot, Clay Pit, Woodbine, Hildreth, Mammoth Road and Clark.

In 1840 a "Committee of Five" began consideration of the need for a rural privately owned cemetery. Led by James G. Carney, an officer of the Lowell Bank and the Lowell Institution for Savings, others active in the planning included Charles Hovey, manufacturer of Father John's medicine, and Oliver M. Whipple who owned a powder mill across the Concord River from the cemetery, and eventually served as cemetery president for 30 years.

The committee selected a 43 acre lot on Fort Hill, acquired by Oliver Whipple for \$5,000 with this use in mind. The lot was deeded to the Proprietors of the Lowell Cemetery in January of 1841, and the \$5,000 promptly raised by the sale of 500 lots at \$10 each. The size of each lot was 300 square feet, allowing for 10 burials.

(continued)

United States Department of the Interior  
National Park ServiceNational Register of Historic Places  
Continuation SheetLowell Cemetery  
Lowell (Middlesex), MASection number 8 Page 3

Civil engineer George P. Worcester designed the cemetery, creating a plan largely as it was executed and remains today. A lithograph was produced of the plan and given to subscribers. On it were drawings of an Egyptian Revival gate and small Gothic Revival chapel, neither of which were constructed as illustrated.

A meeting was held to randomly assign lots to the original subscribers. Those who were dissatisfied with the lot assigned to them were able to pay a \$5 fee to choose a different location. Presiding at this meeting were President Whipple, Treasurer Carney and Clerk Charles Hovey. The commitment of the early officers and trustees, community leaders all, is evident in the length of their involvement with the cemetery. Oliver Whipple continued to serve as president for 27 years, while the other trustees also served lengthy terms.

The new cemetery was consecrated at a ceremony held June 20, 1841. Music, speeches and prayer were the order of the day, with clergy from many of Lowell's churches participating and thousands of spectators attending. According to Catherine L. Goodwin in Mourning Glory: The Story of the Lowell Cemetery (used extensively in the preparation of this nomination):

To the thousands who went to the dedication as well as the lot owners the cemetery offered other possibilities than a future burying place. There were no parks in Lowell until the establishment of the North and South Commons on May 10, 1845. The cemetery took the place of a city park. It was so popular that rules had to be made regarding its use. One early rule was "No riding in the cemetery on the Sabbath." The lot owners objected feeling that their ownership of a lot entitled them to visit when and how they wished. The Trustees relented and issued permits to the lot owners for "Sunday visits with teams" of horses. All others were welcome on foot.

Efforts to raise funds for the development and continued improvement of the cemetery were ongoing for decades. While the original sale of lots yielded money to pay for the acquisition of the land, later lot sales, as well as the sale of wood cleared from the cemetery provided funds for the construction of roads, fences, and other necessary improvements. In addition to selling lots to individuals, eight churches, the Lowell Corporation Hospital, and various other military, social or fraternal organizations purchased large lots. Another source of revenue was a fee charged for burials.

Improvements during the first two decades included the construction in 1848 of an octagonal wooden chapel at a cost of \$750, and the erection of the Lawrence Street gate in 1862. Efforts to

(continued)

**United States Department of the Interior  
National Park Service****National Register of Historic Places  
Continuation Sheet****Lowell Cemetery  
Lowell (Middlesex), MA**Section number 8 Page 4

raise funds for the gate began in 1842, but were not successful until 1861 when the gate was built for \$3,100. Greenhouses were established in the cemetery in 1852, remaining in use until 1949. A cottage for the superintendent and a barn were other early additions. Land acquisition occurred into the early decades of the twentieth century, while some land was lost for the construction of the Lowell & Andover Railroad in 1874.

The price of a lot increased steadily over time. In 1860 a lot which had originally sold for \$10 cost \$35, and by 1879 the price had risen to \$200. Initially lot owners were responsible for the care of their own lots. Some owners established trust funds for the ongoing care of their lots beginning in 1855 until eventually all lots had perpetual care, with a portion of the purchase price placed in a fund for that purpose.

The 1880s saw a flurry of construction activity as the earlier chapel was replaced in 1885 and a new office for the Superintendent was built in 1886. The chapel was donated in memory of Charles Potts Talbot. Both were designed by Lowell and Boston architect Frederick Stickney, who also designed cemetery president Oliver Cushing's residence at 48 Wannalancit Street (ca. 1885), and the Receiving Tomb (1891). Among Stickney's public buildings in Lowell were Memorial Hall/Public Library, Butler School and the Lawrence Street firehouse.

The Belvidere neighborhood to the northeast of Lowell Cemetery was developed as a residential area for Lowell's prosperous and growing middle class during the same years that the cemetery was being established. Access to the cemetery was inconvenient for residents coming from the Belvidere area, as they had to travel around most of the perimeter of the cemetery and endure poor road conditions to reach the Lawrence Street gate. As a result, interest in opening a Belvidere entrance was expressed by the 1850s. Fund raising was slow, so despite the fact that cemetery trustees had reviewed designs and specifications as early as 1892, the fine new gate was not ultimately constructed until 1905.

The continuity of use and community importance of the cemetery is illustrated in many ways. There have been few physical changes during the twentieth century, with the exception of the continued addition of new graves. Ponds were filled to create additional burial areas, greenhouses were removed, and curbing and fencing have been removed from some individual lots, but in all aspects the cemetery retains its sense of place. Community support for and involvement with the cemetery has continued to the present. The position of superintendent was held by members of the Mulno family for over a century, as Robert Mulno, hired in 1882, was succeeded by three generations of his own family. The people who worked to establish Lowell cemetery are now buried there, as are countless others who were members of the community, leaders of industry, and elected officials including governors, mayors, U.S. Representatives, and most recently former United States Senator Paul Tsongas. Guided tours have been offered regularly since 1981 and are well attended.

**(continued)**

United States Department of the Interior  
National Park ServiceNational Register of Historic Places  
Continuation SheetLowell Cemetery  
Lowell (Middlesex), MASection number 8 Page 5

Lowell Cemetery has significance as an excellent example of a "rural" cemetery. Like many communities during the mid-nineteenth century, the Proprietors followed the model of Mount Auburn Cemetery in Cambridge. Established in 1831, it was the first rural or garden cemetery in the country. Its development was inspired by the romantic philosophy of the day, and by trends in European cemetery design, and it in turn provided the inspiration for the "rural" cemetery movement which swept cities across the eastern part of the country.

Garden cemeteries provided oases of rustic, naturalistic landscaping in rapidly urbanizing industrial cities. The juxtaposition of richly carved and handsomely designed monuments, mausoleums and other funerary art and architecture in contrast with the dramatic sites with rural vistas, lush vegetation and varied terrain made these cemeteries treasured places beyond their importance as final resting places for the dead.

Lowell Cemetery, with its hilly terrain overlooking the Concord River, its multiple varieties of horticultural specimens, and its physical isolation from Lowell's most intense industrial activity are all characteristic of the rural cemetery movement. Writing in the romantic tone of the period, the *Lowell Courier* described the site at the cemetery's dedication on June 20, 1841:

Hill and dale are there in delightful proportions and there too are the native oaks and pines which have stood since the days of the tomahawk and wigwam. Enough can be seen to satisfy any observer that it is well chosen and capable of being made one of the most appropriate and beautiful places of sepulture to be found in the country.

In the dedicatory address of that date, Rev. Amos Blanchard said:

We consecrate this as a place where the monuments and the inscriptions shall utter their monitory voice, and art and classic taste shall conspire with autumn's fading leaf and winter's snowy livery, and the jubilee shout of the springtime and summer's golden glories, and the flowing river, and the leaping brook, and the insects hum and the zephyr's requiem, and the warbling of the birds, and the lovely landscape around, the blue heavens above; to soothe, to tranquilize and elevate the soul. Here will shortly rise the urn, the shaft, the table, the mausoleum, and the plain headstone as so many monuments, on the confines of both worlds, presenting to us at once, the end of life's inquietudes and the image of eternal rest.

(continued)

United States Department of the Interior  
National Park ServiceNational Register of Historic Places  
Continuation SheetLowell Cemetery  
Lowell (Middlesex), MASection number 8 Page 6

The natural setting was enhanced by the cemetery plan, designed by George P. Worcester, civil engineer, whose plan used the characteristic curving roads and paths sympathetic to the varied terrain. Manmade enhancements of the landscape were included as well, with the proposed addition of numerous small ponds.

As the many monuments predicted by Rev. Blanchard arose in Lowell Cemetery, it acquired its architectural significance as the location of works by local architects, and sculptors and carvers of local and national acclaim. Works such as the Talbot Memorial Chapel, the Superintendent's Office and the Receiving Tomb were designed by Lowell and Boston architect Frederick Stickney, while Brookline architect C.W. Painter was responsible for the design of the Lawrence Street gate. Notable examples of many architectural styles of the mid-nineteenth through mid-twentieth centuries are found, including the Gothic Revival, Egyptian Revival, neo-Classical and Art Deco. Examples of many different types of funerary architecture and art can be found in Lowell Cemetery. Outstanding mausoleums exist in various architectural styles, as well as tombs built into hillsides, and sarcophagi. Sculptures and elaborate monuments reflect the romanticism of the period, with figures of millworkers, draped women, angels, lions, lambs and sleeping children all reflecting various themes, both personal and universal.

Lowell Cemetery remains in active use, continuing to have new graves intersperses as they always have been with the earlier graves. The district retains its naturalistic beauty, with mature trees, lush vegetation, and appealingly varied terrain. Its buildings, structures and monuments remain little altered by time, while its infrastructure of curving roads and paths, its gates, fences and walls all survive to leave the visitor as impressed with its serenity and beauty now as in the nineteenth century.

**Archaeological Significance**

Since patterns of prehistoric occupation in Lowell are poorly understood, any surviving sites could be significant. Early industrialization and urbanization in Lowell and along this area of the Concord River has undoubtedly effected the integrity of many prehistoric sites in these areas. Prehistoric resources on the Lowell Cemetery property can contribute information on the subsistence and settlement role of sites along primary tributaries of the Merrimack River to sites along the primary Merrimack drainage corridor. Prehistoric sites in this area can be part of a larger regional pattern which focused on areas such as the nearby confluence of the Concord and Merrimack Rivers. Such locales have been recognized as regionally important settlement locations or cores particularly during later Woodland periods. Prehistoric sites in this area may also contain information which can contribute to a greater understanding of regional trade patterns, particularly between interior and coastal locales. The Merrimack River represents a regionally important transportation corridor for both the prehistoric and historic periods.

(continued)

**United States Department of the Interior  
National Park Service****National Register of Historic Places  
Continuation Sheet****Lowell Cemetery  
Lowell (Middlesex), MA**Section number   3   Page   7  

Historic archaeological resources described above have the potential to provide additional documentation relating to the growth of a cemetery which characterized the incorporation of rural elements in community planning during a period of rapid industrialization in Lowell. Mapping of structural remains from the 19<sup>th</sup> century superintendents house and outbuildings, greenhouses and octagonal wooden chapel can help reconstruct patterns of development for the cemetery during it's early phase and into the 20<sup>th</sup> century. Soil borings might also contribute to this reconstruction by identifying areas where ponds were created as part of the early cemetery plan then later filled as cemetery priorities and needs changed. The above information combined with a detailed analysis of occupational type features associated with the greenhouses, superintendents house and outbuildings can also provide information relating to the life of the cemetery staff and , the types of maintenance activities which occurred at the cemetery. The presence of unmarked graves can also provide information relating to the care of the communities poor and indigent population. Artifact analysis of cultural materials associated with particular graves can also be important by providing information relating to different burial practices and or customs possibly based on ethnic or socio-political status.

(end)

United States Department of the Interior  
National Park Service

National Register of Historic Places  
Continuation Sheet

Lowell Cemetery  
Lowell (Middlesex), MA

Section number 9 Page 1

---

9. BIBLIOGRAPHY

- Bender, Thomas. Toward an Urban Vision: Ideas and Institutions in Nineteenth Century America. Lexington, KY: University Press of Kentucky, 1975
- Blanchard, Amos. An Address Delivered at the Consecration of the Lowell Cemetery, June 20, 1841. Lowell, 1841.
- Coburn, F.W. History of Lowell and its People. New York: Lewis Historical Publishing Co., 1920.
- Cowley, Charles. Illustrated History of Lowell. Boston: Lee & Shephrd, 1868.
- Dinmore, Harry C. History of the Lowell Cemetery. 1968.
- Emmet, Alan S. "Open Space in Lowell, 1826-1886." Unpublished paper for Harvard Graduate School of Design, 1975.
- Goodwin, Catherine L. Mourning Glory: The Story of the Lowell Cemetery. Lowell: Lowell Historical Society, 1992
- Linden-Ward, Blanche. Silent City on a Hill: Landscapes of Memory and Boston's Mount Auburn Cemetery. Columbus: Ohio State University Press, 1989.
- Lowell Cemetery Corporation Records.
- Plan of Lowell Cemetery. Boston: G.P. Worcester, 1841.  
Lowell: Butterfield and Clark, 1850  
1920
- Lowell *Daily Citizen*. "In God's Acre," June 16, 1886.
- Lowell *Morning Citizen*. "The New Entrance Gateway to Lowell Cemetery," March 21, 1905.  
"Proposed Belvidere Gate of the Lowell Cemetery," n.d.
- Lowell *Courier-Citizen*. "Immortal History of City Found in its Cemeteries," May 28, 1936.

(end)

Lowell Cemetery  
Name of Property

Middlesex County, MA  
County and State

### 10. Geographical Data

**Acreage of Property** ca. 73 acres

**UTM References** See continuation sheet.

(Place additional UTM references on a continuation sheet)

1. 19	312000	4722200	2. 19	311800	4721320
Zone	Easting	Northing	Zone	Easting	Northing
3. 19	311940	4721600	4. 19	311540	4722040
Zone	Easting	Northing	Zone	Easting	Northing

See continuation sheet

#### Verbal Boundary Description

(Describe the boundaries of the property on a continuation sheet.)

#### Boundary Justification

(Explain why the boundaries were selected on a continuation sheet.)

### 11. Form Prepared By

name/title Kim Withers Brengle, Preservation Consultant, with Betsy Friedberg, MHC, National Register Director

organization Massachusetts Historical Commission date April 1998

street & number 220 Morrissey Boulevard telephone 617-727-8470

city or town Boston state MA zip code 02125

#### Additional Documentation

Submit the following items with the completed form:

#### Continuation Sheets

#### Maps

A **USGS map** (7.5 or 15 minute series) indicating the property's location.

A **sketch map** for historic districts and properties having large acreage or numerous resources.

#### Photographs

Representative **black and white photographs** of the property.

**Additional items** (Check with the SHPO or FPO for any additional items)

#### Property Owner

(Complete this item at the request of the SHPO or FPO.)

name City of Lowell Cemetery Department

street & number 1375 Gorham Street telephone 978-970-3323

city or town Lowell state MA zip code 01854

**Paperwork Reduction Act Statement:** This information is being collected for applications to the National Register of Historic Places to nominate properties for listing or determine eligibility for listing, to list properties, and to amend existing listings. Response to this request is required to obtain a benefit in accordance with the National Historic Preservation Act, as amended (16 U.S.C. 470 et seq.).

**Estimated Burden Statement:** Public reporting burden for this form is estimated to average 18.1 hours per response including the time for reviewing instructions, gathering and maintaining data, and completing and reviewing the form. Direct comments regarding this burden estimate or any aspect of this form to the Chief, Administrative Services Division, National Park Service, P.O. Box 37127, Washington, DC 20013-7127; and the Office of Management and Budget, Paperwork Reductions Project (1024-0018), Washington, DC 20503.

**United States Department of the Interior  
National Park Service****National Register of Historic Places  
Continuation Sheet****Lowell Cemetery  
Lowell (Middlesex), MA**Section number 10 Page 1**10. GEOGRAPHICAL DESCRIPTION****VERBAL BOUNDARY DESCRIPTION**

The nominated property is most of the parcel owned by the Lowell Cemetery Corporation, consisting of approximately 73, located at 984 Lawrence Street. The entire parcel contains 84.43 acres, including approximately 11 acres of undeveloped reserve land at the parcel's northwest corner. Beginning at the junction of Lawrence Street and the Boston & Maine Railroad the nominated area is bounded by the Boston & Maine Railroad (south), land owned by the City of Lowell (east and south), Shedd Playground (northeast), and Fort Hill Park (north). At the north corner of the nominated property (near the Belvidere gate) the boundary runs west southwest along a fence until it reaches a point 40' west of Shedd Street in the cemetery. There the boundary runs south and then west along a line 40' back from graves along Shedd Street and Washington Street in the cemetery. This boundary extends to the western edge of the cemetery property, where it turns south and follows the Boston & Maine Railroad along the Concord River (west) and Lawrence Street (southwest) to the starting point.

**BOUNDARY JUSTIFICATION**

The nominated property is the parcel of land historically associated with and developed by the Lowell Cemetery, from its original purchase of 43 acres (1841) through the addition and deletion of small parcels through the early 20<sup>th</sup> century. Undeveloped reserve land (approximately 11 acres at the northwestern corner of the property) has been excluded, using a line of convenience.

**(end)**

**United States Department of the Interior  
National Park Service**

**National Register of Historic Places  
Continuation Sheet**

Lowell Cemetery  
Lowell (Middlesex), MA

Section number photos Page \_\_\_\_\_

---

**PHOTOGRAPHS**

Date: January, 1997

Photographer: Kim Withers Brengle

Location of negatives: Lowell Historic Board, JFK Civic Center, Lowell, MA

Photos 1-7 are sized 8 x 10

1. Lawrence Street gate (facing E)
2. Talbot Memorial Chapel (facing NE)
3. General View with Rogers Tomb in background (facing NE)
4. General View from Washington Ave. near Lawrence St. gate (facing N)
5. Currier Monument (facing E)
6. General view, Greenwood obelisk (facing E)
7. Maynard lot and Bonney Monument (facing E)

Photos 8-13 are sized 3 x 5

8. Ebert Monument (facing SE)
9. Lilly Monument (facing NE)
10. Louisa Wells Monument (facing N)
11. Clark Monument (facing E)
12. Hancock Monument (facing N)
13. Receiving tomb (facing NW)

(end)

**Lowell Cemetery  
Lowell (Middlesex Co.), MA  
District Data Sheet**

<u>Map#</u>	<u>Historic Name</u>	<u>Type</u>	<u>Material</u>	<u>Resource</u>	<u>Date</u>	<u>Status</u>	<u>Photo#</u>
1	Lowell Cemetery	Cemetery	N/A	SI	1841	C	
2	Cemetery Office	Building	Granite	B	1887	C	
3	Talbot Mem. Chapel	Building	Granite	B	1885	C	2
4	Lawrence St. Gate	Entry	Granite	ST	1862	C	1
5	Circulation System	Roadway	N/A	ST	1841	C	
6	Fence - Lawrence Street	Fence	Cast Iron	ST	1862?	C	
7	Belvidere Gate	Entry	Granite	ST	1905	C	
8	Fence	Fence	Iron	ST	1905	C	
9	Adams	Monument	Marble, Granite	O	unknown	C	
10	Sarah Elizabeth Adams	Statue	Granite	O	1918	C	
11	Frederick Ayer	Monument	Granite	O	ca 1918	C	
12	James C. Ayer	Monument	Marble	O		C	
13	Baker/Bradt	Monument	Granite	O	1884	C	
14	Bonney	Monument/ Statue	Granite, Bronze	ST	ca 1920	C	7

**Lowell Cemetery  
Lowell (Middlesex Co.), MA  
District Data Sheet**

<u>Map#</u>	<u>Historic Name</u>	<u>Type</u>	<u>Material</u>	<u>Resource</u>	<u>Date</u>	<u>Status</u>	<u>Photo#</u>
15	George Cady	Monument	Marble, Granite	O	ca 1865-1877	C	
16	Lyman Cady	Obelisk	Marble, Granite	O	ca 1888	C	
17	Caverly/Crosby	Cross	Granite	O	unknown	C	
18	Frederick C. Church	Sarcophagus	Granite	O	by 1936	C	
19	Clark	Monument/ Statue	Limestone, Granite	O	unknown	C	11
20	Harriet Nesmith Coburn	Cross	Marble	O	1871	C	
21	Currier	Monument	Marble, Granite	O	ca 1850s	C	5
22	Dancause	Mausoleum	Granite	ST	unknown	C	
23	W.L. Day	Obelisk	Marble, Granite	O	1855	C	
24	Josiah Deane	Monument	Granite	O	unknown	C	
25	Horace Ebert	Chair	Granite	O	189?	C	8
26	James B. Francis	Obelisk	Granite	O	1892	C	
27	G.A.R. Urn	Monument	Granite	O	1898	C	

**Lowell Cemetery  
Lowell (Middlesex Co.), MA  
District Data Sheet**

<u>Map#</u>	<u>Historic Name</u>	<u>Type</u>	<u>Material</u>	<u>Resource</u>	<u>Date</u>	<u>Status</u>	<u>Photo#</u>
28	Gibby	Monument/ Statue	Marble	O	ca 1890	C	
29	Hancock	Monument	Marble	O	unknown	C	12
30	Hocum Hosford	Monument	Granite	O	1881	C	
31	Charles Hovey	Monument	Granite	O	1886	C	
32	Maj. William H. Lamson	Monument	Marble	O	1865	C	
33	Lawton	Mausoleum	Granite	ST	ca 1930	C	
34	Lilly	Statue	Limestone	O	1910	C	9
35	Marston	Obelisk	Granite	O	ca 1867	C	
36	James Meadowcraft	Monument	Marble	O	1865	C	
37	Minter	Monument/ Statue	Granite, Marble	O	ca 1909	C	
38	Robert Mulno	Tomb	Marble, Granite	O	1915	C	
39	Dr. Moses Greeley Parker	Mausoleum	Granite	ST	1917	C	
40	Theodore E. Parker	Mausoleum	Granite	ST	ca 1930s	C	

**Lowell Cemetery  
Lowell (Middlesex Co.), MA  
District Data Sheet**

<u>Map#</u>	<u>Historic Name</u>	<u>Type</u>	<u>Material</u>	<u>Resource</u>	<u>Date</u>	<u>Status</u>	<u>Photo#</u>
41	Rogers	Tomb	Granite, Marble	ST	ca 1890	C	3
42	John J., Edith N. Rogers	Cross	Granite	O	1925	C	3
43	Emma Runels	Statue/ Sarcophagus	Granite	O	1872	C	
44	Eli Hoyt Shedd	Mausoleum	Granite	ST	1890	C	13
45	Freeman Ballard Shedd	Mausoleum	Granite	ST	ca 1913	C	
46	Snell	Monument/ Statue	Marble	O	ca 1867	C	
47	Varnum	Urn	Granite	O	unknown	C	
48	Benjamin Walker	Ledger	Slate	O	1840	C	
49	Helen, John Waugh	Monument	Marble	O	1869	C	
50	Henry P. Webber	Monument	Marble	O	1893	C	
51	Louisa Wells	Bas-Relief	Marble	O	ca 1906	C	10
52	Sargent	Mausoleum	Granite	ST	1924	C	
53	Taft	Obelisk	Marble, Granite	O	1875	C	

**Lowell Cemetery  
Lowell (Middlesex Co.), MA  
District Data Sheet**

<u>Map#</u>	<u>Historic Name</u>	<u>Type</u>	<u>Material</u>	<u>Resource</u>	<u>Date</u>	<u>Status</u>	<u>Photo#</u>
	Garage Maintenance Bldg.	Building	Concrete block	B	late 20 <sup>th</sup> century	NC	

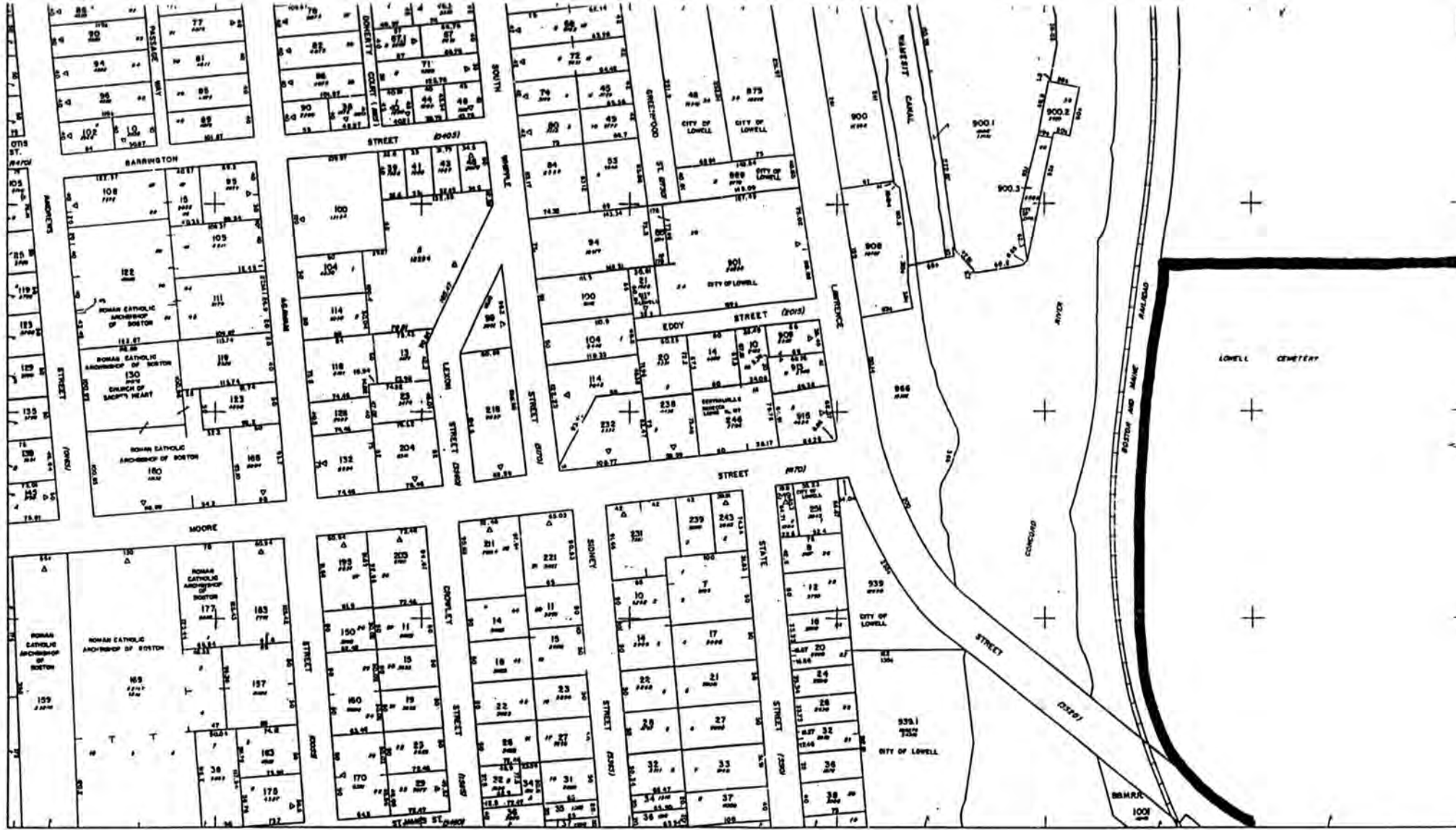
KEY: C: Contributing resource      NC: Noncontributing resource

RESOURCE COUNT

	<u>Contributing</u>	<u>Non-Contributing</u>
Buildings (B)	2	1
Sites (SI)		1
Structures (ST)	14	
Objects (O)	36	
<b>TOTAL</b>	<b>53</b>	<b>1</b>

Note: Due to the large number of graves and markers in Lowell Cemetery, it is impossible to identify every resource. As a result, the District Data Sheet is intended to provide a sample of the types of resources existing in the cemetery.





LOWELL CEMETERY HIST. DIST.  
 LOWELL, MA.  
 ASSESSOR'S MAP # 205  
 SCALE: 1" = 100'  
 MAP # 1 of 6

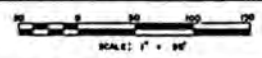
PREPARED BY  
**HUNNICUTT & ASSOCIATES, INC.**  
 A DIVISION OF L. ROBERT KIMBALL & ASSOC.  
 ENGINEERS - APPRAISERS - CARTOGRAPHERS  
 ST. PETERSBURG, FLORIDA

REGULATING PLANS DATED 2-15-88  
 AND 12-28-88 FOR OVERLAP SURVEYS

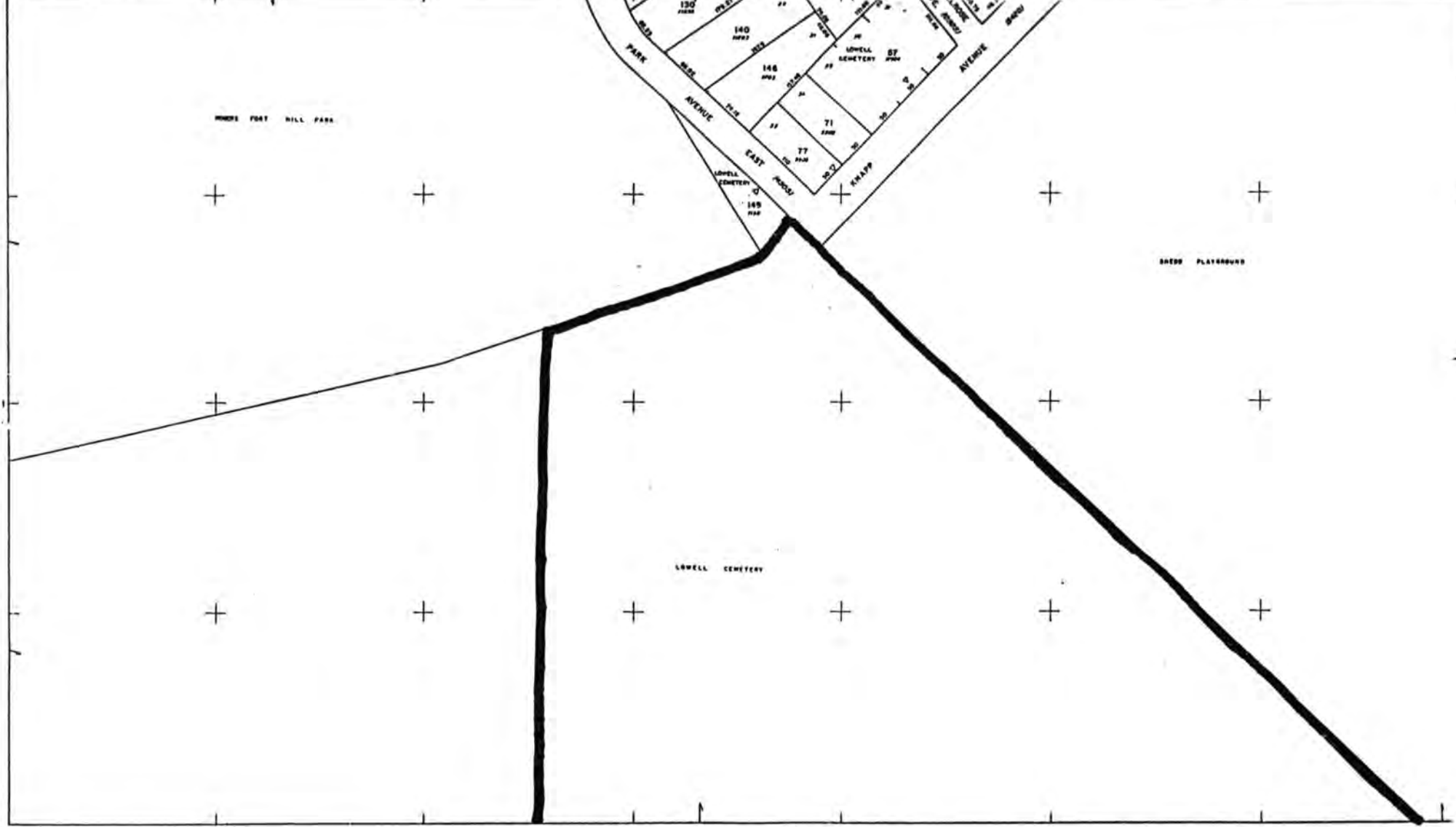
**30X**

REVISIONS		PROPERTY OWNERSHIP MAPS	SHEET INDEX	
DATE	REV. BY			
		CITY OF LOWELL, MASSACHUSETTS	183	204 222
			184	205 223
			185	206 224

DATE: JAN. 1, 1988







LOWELL CEMETERY HIST. DIST  
 LOWELL, MA.  
 ASSESSOR'S MAP # 222  
 SCALE: 1" = 100'  
 MAP # 3 of 6

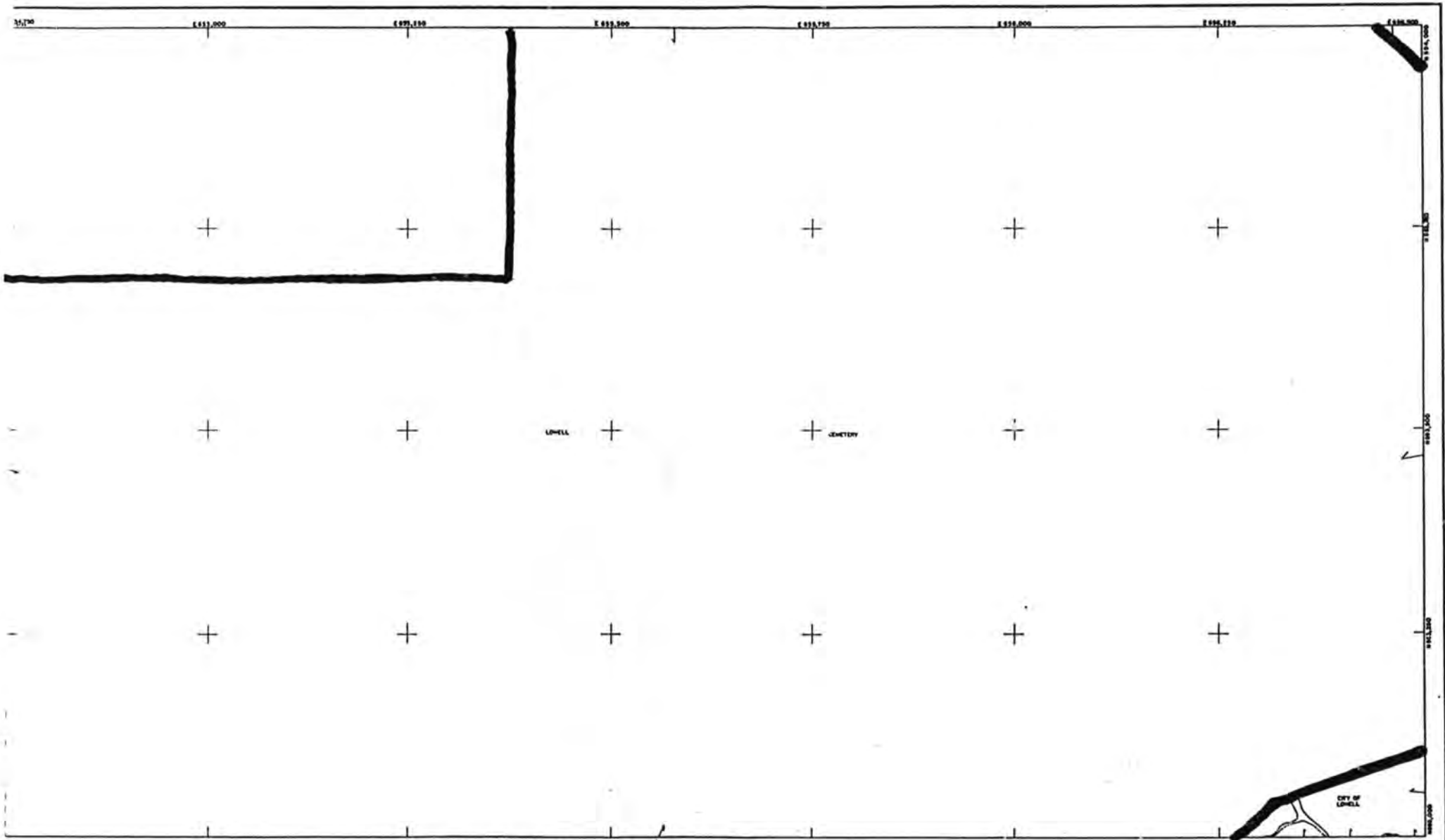
PREPARED BY  
**HUNNICUTT & ASSOCIATES, INC.**  
 A DIVISION OF L. ROBERT KIMBALL & ASSOC.  
 ENGINEERS - APPRAISERS - CARTOGRAPHERS  
 ST. PETERSBURG, FLORIDA

FORWARDING PLAN DATED 6-28-98  
 SHD AS SHOWN FOR DEVELOPMENT PURPOSES

**30X**

REVISIONS		PROPERTY OWNERSHIP MAPS	SHEET INDEX	
DATE	REV. BY			
		CITY OF LOWELL, MASSACHUSETTS	203	221 2
			204	222 2
			205	223 2





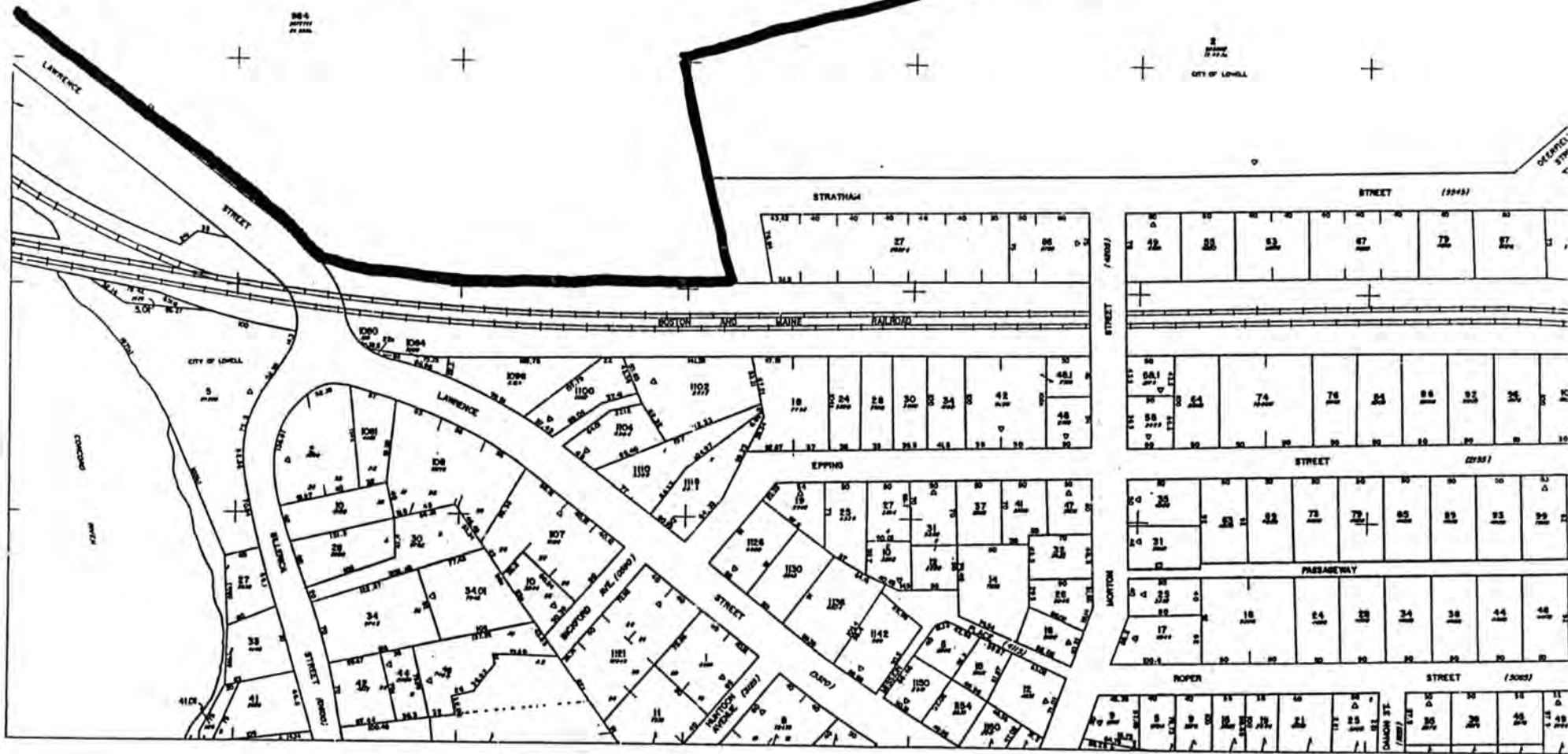
LOWELL CEMETERY HIST. DIST.  
 LOWELL, MA.  
 ASSESSOR'S MAP # 223  
 SCALE: 1" = 100'  
 MAP # 4 of 6

REVISIONS		PROPERTY OWNERSHIP MAPS	SHEET INDEX		
DATE	REV BY		204	222	237
		CITY OF LOWELL, MASSACHUSETTS	205	223	238
			206	224	239



30X

PREPARED BY  
 HUNNICUTT & ASSOCIATES, INC.  
 A DIVISION OF L. ROBERT KIMBALL & ASSOC.  
 ENGINEERS - APPRAISERS - CARTOGRAPHERS  
 ST. PETERSBURG, FLORIDA



LOWELL CEMETERY HIST. DIST.  
 LOWELL, MA.  
 ASSESSOR'S MAP # 224  
 SCALE: 1" = 100'  
 MAP # 5 of 6

PREPARED BY  
**HUNNICUTT & ASSOCIATES, INC.**  
 A DIVISION OF L. ROBERT KIMBALL & ASSOC.  
 ENGINEERS - APPRAISERS - CARTOGRAPHERS  
 ST. PETERSBURG, FLORIDA

SPRINGFIELD PLANS SHEET 4-10-66  
 SHOWN AS BOUND FOR DEVELOPMENT MAPS

REVISIONS		PROPERTY OWNERSHIP MAPS	SHEET INDEX	
DATE	REV. BY			
		CITY OF LOWELL, MASSACHUSETTS	205	223
			206	224
			207	225

**30X**





LOWELL CEMETERY HIST. DIST.  
 LOWELL, MA.  
 ASSESSOR'S MAP # 238  
 SCALE: 1" = 100'  
 MAP # 6 of 6

REVISIONS		PROPERTY OWNERSHIP MAPS	SHEET INDEX		
DATE	DEL BY		222	237	253
		CITY OF LOWELL, MASSACHUSETTS	223	238	254
			224	239	255

DATE: JAN. 1, 1992

30X



UNITED STATES DEPARTMENT OF THE INTERIOR  
NATIONAL PARK SERVICE

NATIONAL REGISTER OF HISTORIC PLACES  
EVALUATION/RETURN SHEET

REQUESTED ACTION: NOMINATION

PROPERTY NAME: Lowell Cemetery

MULTIPLE NAME:

STATE & COUNTY: MASSACHUSETTS, Middlesex

DATE RECEIVED: 4/17/98      DATE OF PENDING LIST: 4/28/98  
DATE OF 16TH DAY: 5/14/98      DATE OF 45TH DAY: 6/01/98  
DATE OF WEEKLY LIST:

REFERENCE NUMBER: 98000543

NOMINATOR: STATE

REASONS FOR REVIEW:

APPEAL: N DATA PROBLEM: N LANDSCAPE: N LESS THAN 50 YEARS: N  
OTHER: N PDIL: N PERIOD: N PROGRAM UNAPPROVED: N  
REQUEST: N SAMPLE: N SLR DRAFT: N NATIONAL: N

COMMENT WAIVER: N

ACCEPT       RETURN       REJECT      5-20-98 DATE

ABSTRACT/SUMMARY COMMENTS:

Entered in the  
National Register

RECOM./CRITERIA \_\_\_\_\_

REVIEWER \_\_\_\_\_ DISCIPLINE \_\_\_\_\_

TELEPHONE \_\_\_\_\_ DATE \_\_\_\_\_

DOCUMENTATION see attached comments Y/N see attached SLR Y/N



LAWRENCE ST. GATE

LOWELL CEMETERY HISTORIC DISTRICT  
LOWELL, MA.

PHOTOGRAPHER: KIM BRENGLE

LOCATION OF NEGATIVE: LOWELL HISTORIC BOARD  
JFK CIVIC CENTER  
LOWELL, MA.

DATE: JANUARY, 1997

VIEW FACING EAST

PHOTO # 1 OF 13



Talbot Memorial Chapel

Lowell Cemetery Historic District

Lowell, MA

Photographer: Kim Brengle

Location of Negative: Lowell Historic Board, JFK Civic Center, Lowell, MA

Date January 1997

View facing NE

Photo #2 of 13



3

GENERAL VIEW WITH ROGERS TOMB IN BACKGROUND  
LOWELL CEMETERY HISTORIC DISTRICT

LOWELL, MA.

PHOTOGRAPHER: KIM BRENGLE

LOCATION OF NEGATIVE: LOWELL HISTORIC BOARD  
JFK CIVIC CENTER  
LOWELL, MA.

DATE: JANUARY, 1997

VIEW FACING NORTHEAST

PHOTO # 3 OF 13



WASHINGTON

GENERAL VIEW FROM WASHINGTON AVE. NEAR LAWRENCE ST. GATE  
LOWELL CEMETERY HISTORIC DISTRICT  
LOWELL, MA.

PHOTOGRAPHER: KIM BRENGLE

LOCATION OF NEGATIVE: LOWELL HISTORIC BOARD  
JFK CIVIC CENTER  
LOWELL, MA.

DATE: JANUARY, 1997

VIEW FACING NORTH

PHOTO #4 OF 13



5

CURRIER MONUMENT  
LOWELL CEMETERY HISTORIC DISTRICT  
LOWELL, MA.  
PHOTOGRAPHER: KIMI BREngle  
LOCATION OF NEGATIVE: LOWELL HISTORIC BOARD  
JFK CIVIC CENTER  
LOWELL, MA

DATE: JANUARY, 1997  
VIEW FACING EAST  
PHOTO # 5 OF 13



GREENWOOD.

GENERAL VIEW  
LOWELL CEMETERY HISTORIC DISTRICT  
LOWELL, MA.

PHOTOGRAPHER: KIM BRENLE

LOCATION OF NEGATIVE: LOWELL HISTORIC BOARD  
JFK CIVIC CENTER  
LOWELL, MA.

DATE: JANUARY, 1994  
VIEW FACING EAST  
PHOTO # 6 OF 13



RONNEY

MAYNARD

FRANK ERNEST BRAMHALL  
CAROLINE MAYNARD HIS WIFE  
P. MAYNARD BRAMHALL

CHA'S MAYNARD

C.W. MAYNARD

7

MAYNARD LOT AND BONNEY MONUMENT  
LOWELL CEMETERY HISTORIC DISTRICT  
LOWELL, MA.  
PHOTOGRAPHER: KIM BREngle  
LOCATION OF NEGATIVE: LOWELL HISTORIC BOARD  
JFK CIVIC CENTER  
LOWELL, MA  
DATE: JANUARY, 1997  
VIEW FACING EAST  
PHOTO # 7 OF 13



EDITH.

MARY.

EBERT

EBERT MONUMENT  
LOWELL CEMETERY HISTORIC DISTRICT  
LOWELL, MA.

PHOTOGRAPHER: KIM BRENGLE

LOCATION OF NEGATIVE:

LOWELL HISTORIC BOARD

JFK CIVIC CENTER

LOWELL, MA.

DATE: JANUARY, 1997

VIEW FACING SOUTHEAST

PHOTO # 8 OF 13



9

LILLY MONUMENT  
LOWELL CEMETERY HISTORIC DISTRICT  
LOWELL, MA,  
PHOTOGRAPHER: KIM BRENGLE  
LOCATION OF NEGATIVE:  
LOWELL HISTORIC BOARD  
JFK CIVIC CENTER  
LOWELL, MA  
DATE: JANUARY, 1997  
VIEW FACING NORTH EAST  
PHOTO # 9 OF 13



LOUISA WELLS MONUMENT  
LOWELL CEMETERY, HISTORIC DISTRICT  
LOWELL, MA,

PHOTOGRAPHER: KIM BRENGLE

LOCATION OF NEGATIVE:

LOWELL HISTORIC BOARD

JFK CIVIC CENTER

LOWELL, MA

DATE: JANUARY, 1997

VIEW FACING NORTH

PHOTO # 10 OF 13



J. T. CLARK  
1845-1915

CLARK MONUMENT  
LOWELL CEMETERY HISTORIC DISTRICT  
LOWELL, MA.

PHOTOGRAPHER: KIM BRENGLE

LOCATION OF NEGATIVE:  
LOWELL HISTORIC BOARD  
JFK CIVIC CENTER  
LOWELL, MA.

DATE: JANUARY, 1997

VIEW FACING EAST

PHOTO # 11 OF 13



HANCOCK

HANCOCK MONUMENT  
LOWELL CEMETARY HISTORIC DISTRICT  
LOWELL, MA

PHOTOGRAPHER: KIM BRENGLE  
LOCATION OF NEGATIVE:

LOWELL HISTORIC BOARD  
JFK CIVIC CENTER  
LOWELL, MA

DATE: JANUARY, 1997

VIEW FACING NORTH

PHOTO # 12 OF 13



RECEIVING TOMB

LOWELL CEMETERY HISTORIC DISTRICT  
LOWELL, MA.

PHOTOGRAPHER: KIM BRENGLE

LOCATION OF NEGATIVE:

LOWELL HISTORIC BOARD  
JFK CIVIC CENTER  
LOWELL, MA.

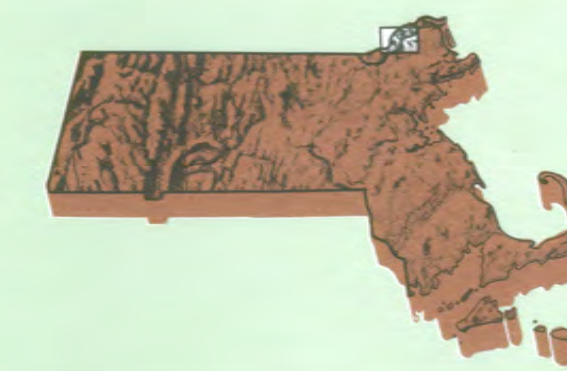
DATE: JANUARY, 1997

VIEW FACING NORTHWEST

PHOTO # 13 OF 13

# Lowell

MASSACHUSETTS-  
NEW HAMPSHIRE  
1:25 000-scale metric  
topographic map



### 7.5 X 15 MINUTE QUADRANGLE SHOWING

- Contours and elevations in meters
- Highways, roads and other manmade structures
- Water features
- Woodland areas
- Geographic names



Produced by the United States Geological Survey in cooperation with Massachusetts Department of Public Works

Control by USGS, NOS/NOAA, and Commonwealth of Massachusetts agencies  
Compiled by photogrammetric methods from aerial photographs taken 1981. Field checked 1983. Map edited 1987. This area also covered by 7.5-minute 1:24,000-scale maps: Nashua South 1965 and Lowell 1966

Projection and 1000-meter grid, zone 19 Universal Transverse Mercator  
10,000-foot grid ticks based on Massachusetts coordinate system, mainland zone, and New Hampshire coordinate system 1927 North American Datum  
To place on the predicted North American Datum 1983, move the projection lines 6 meters south and 40 meters west as shown by dashed corner ticks  
There may be private inholdings within the boundaries of the National or State reservations shown on this map

CONTOUR INTERVAL 3 METERS  
NATIONAL GEODETIC VERTICAL DATUM OF 1929  
CONTOUR ELEVATIONS SHOWN TO THE NEAREST 0.1 METER  
OTHER ELEVATIONS SHOWN TO THE NEAREST 0.5 METER

THIS MAP COMPLIES WITH NATIONAL MAP ACCURACY STANDARDS

FOR SALE BY U.S. GEOLOGICAL SURVEY  
DENVER, COLORADO 80225, OR RESTON, VIRGINIA 22092

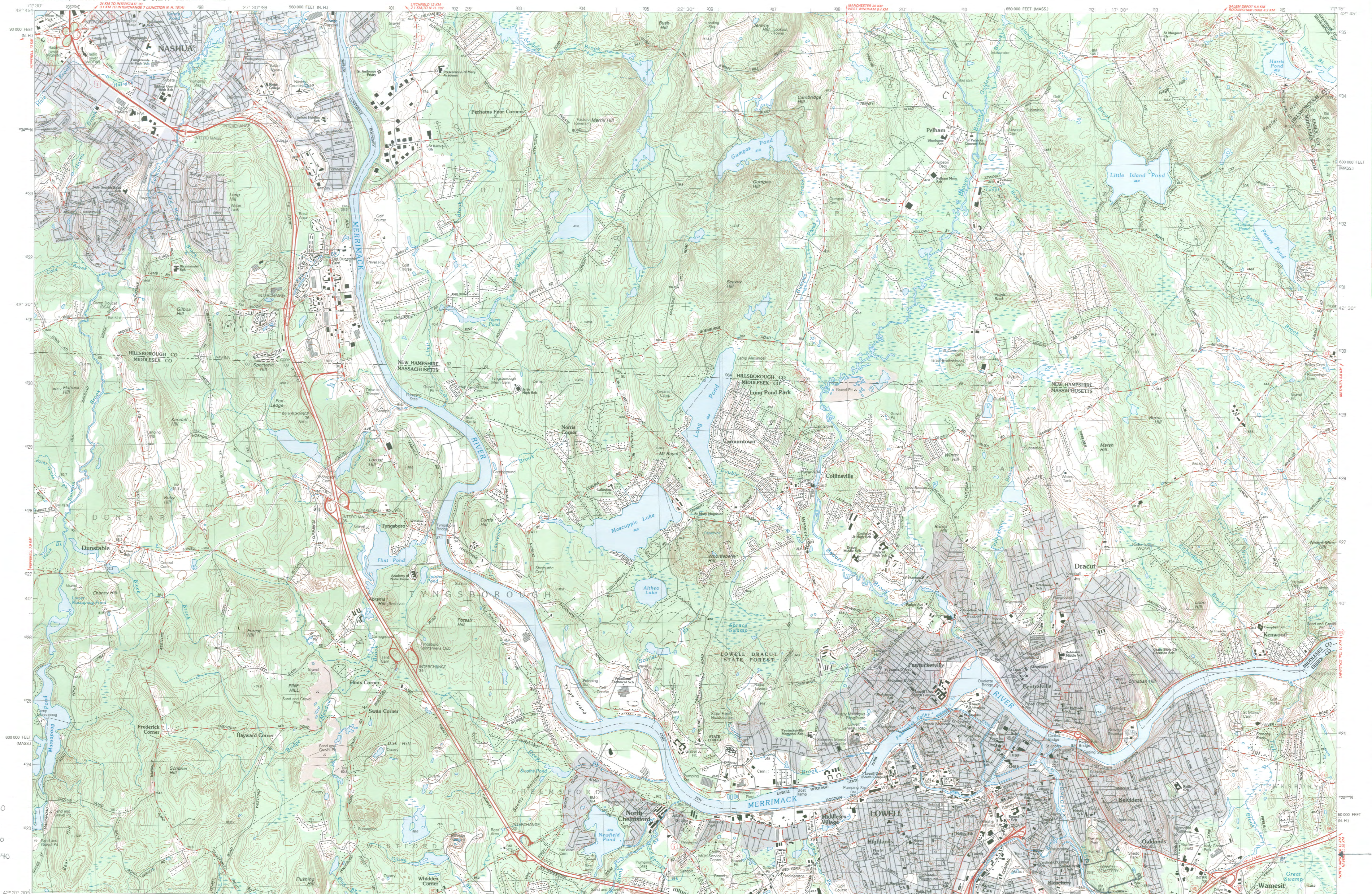
Meters	Feet	DECLINATION DIAGRAM		ADJOINING MAPS			
1	3.2808			1	2	3	4
2	6.5617			5	6	7	8
3	9.8425						
4	13.1234						
5	16.4042						
6	19.6850						
7	22.9659						
8	26.2467						
9	29.5275						
10	32.8084						

ISBN 0-607-23461-X  
9 780607 234619

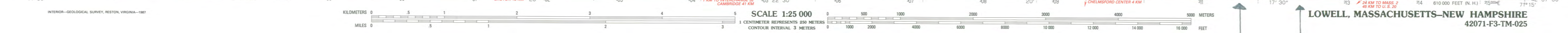
### Topographic Map Symbols

- Primary highway, hard surface
- Secondary highway, hard surface
- Light-duty road, hard or improved surface
- Unimproved road; trail
- Route marker: interstate; U. S.; State
- Route: standard gauge; narrow gauge
- Bridge: drawbridge
- Footbridge; overpass; underpass
- Build-up area: only selected landmark buildings shown
- Houses; barn; church; school; large structure
- Boundary:
  - National, with monument
  - State
  - County, parish
  - City township, precinct, census
  - Incorporated city, village, town
  - National or State reservation; small park
  - Land grant with monument; found section corner
  - U. S. public lands survey; township section
  - Range, township; section line: location approximate
  - Fence or field line
- Power transmission line, located tower
- Dam with lock
- Cemetery: grave
- Campground; picnic area; U. S. location monument
- Well; water well; spring
- Minor (dry) stream; arroyo or riego; intermittent
- Control: horizontal station; vertical station; spot elevation
- Contours: index; intermediate; supplementary; depression
- Distorted surface: strip mine; lava; sand
- Barren (rock) surface: talus; scree
- Perennial lake and stream; intermittent lake and stream
- Rapids, large and small; falls, large and small
- Swamp; marsh
- Submerged marsh: subject to controlled inundation
- Woodland: scattered trees
- Scrub; mangrove
- Orchard; vineyard

A pamphlet describing topographic maps is available on request



LOWELL CEMETERY  
MIDDLESEX CO.  
LOWELL, MA.  
A. 19/312000/472200  
B. 19/311800/4721320  
C. 19/311940/4721600  
D. 19/311540/4722040





**The Commonwealth of Massachusetts**  
William Francis Galvin, Secretary of the Commonwealth  
Massachusetts Historical Commission

April 3, 1998

Ms. Carol Shull  
National Register of Historic Places  
Department of the Interior  
National Park Service  
Mail Stop 2280, Suite 400  
1849 C Street, N.W.  
Washington, DC 20240

Dear Ms. Shull:

Enclosed please find the following nomination for:

Lowell Cemetery, 984 Lawrence Street, Lowell (Middlesex Co.), MA

The nomination has been voted eligible by the State Review Board and has been signed by the State Historic Preservation Officer. The owners of property in the Certified Local Government community of Lowell were notified of pending State Review Board consideration 60-120 days before the meeting.

Sincerely,

A handwritten signature in cursive script that reads "Betsy Friedberg".

Betsy Friedberg, National Register Director  
Massachusetts Historical Commission

cc: Debra Grossman, Chair, Lowell Historic Board  
Stephen Stowell, Lowell Historic Board  
Hon. Edward Caulfield, Mayor, City of Lowell  
Virginia Dolloff, Director of Planning, City of Lowell  
Kim Withers Brengle, Preservation Consultant