



Jonathan Dickerman II House  
105 Mt. Carmel Avenue  
Hamden

New Haven County, CT

D. Ransom Photo, 6/80

Negative: Connecticut  
Historical Commission

FACADE, VIEW NORTHEAST

Photograph 1 of 8

The Old Red House  
— 1770 —  
HAMDEN HISTORICAL SOCIETY



Jonathan Dickerman II House  
105 Mt. Carmel Avenue  
Hamden

New Haven County, CT  
D. Ransom Photo, 6/80  
Negative: Connecticut  
Historical Commission  
FRONT DOORS, VIEW EAST  
Photograph 2 of 8



Jonathan Dickerman II House  
105 Mt. Carmel Avenue  
Hamden

New Haven County, CT  
D. Ransom Photo, 6/80  
Negative: Connecticut  
Historical Commission  
NORTH AND EAST ELEVATIONS,  
VIEW SOUTHWEST  
Photograph 3 of 8



Jonathan Dickerman II House  
105 Mt. Carmel Avenue  
Hamden

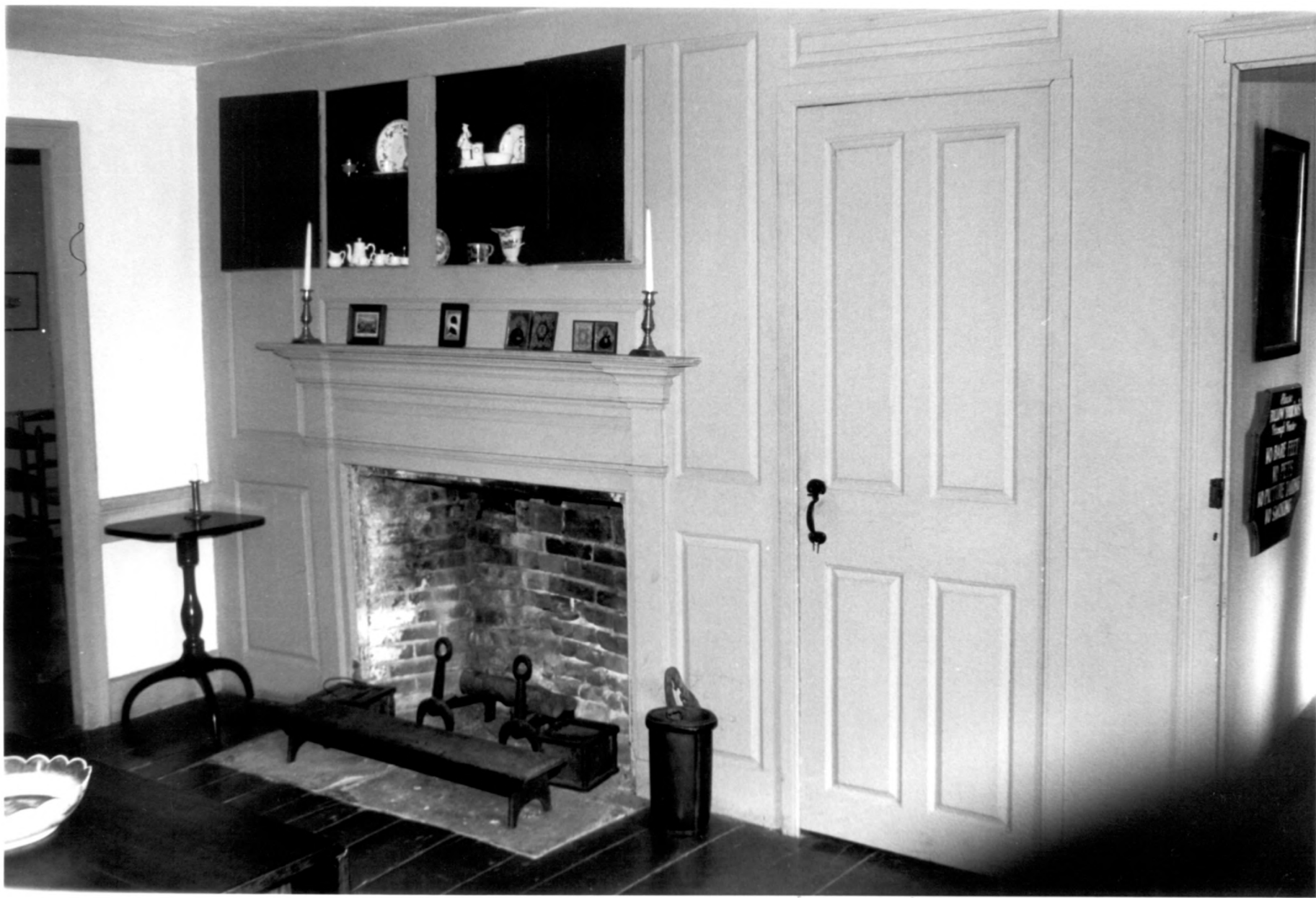
New Haven County, CT

D. Ransom Photo, 6/80

Negative: Connecticut  
Historical Commission

SOUTH ELEVATION, VIEW NORTH  
Photograph 4 of 8





Jonathan Dickerman II House  
105 Mt. Carmel Avenue  
Hamden

New Haven County, CT

D. Ransom Photo, 6/80

Negative: Connecticut  
Historical Commission

NORTH FRONT ROOM, VIEW  
SOUTHEAST

Photograph 5 of 8



Jonathan Dickerman II House  
105 Mt. Carmel Avenue  
Hamden

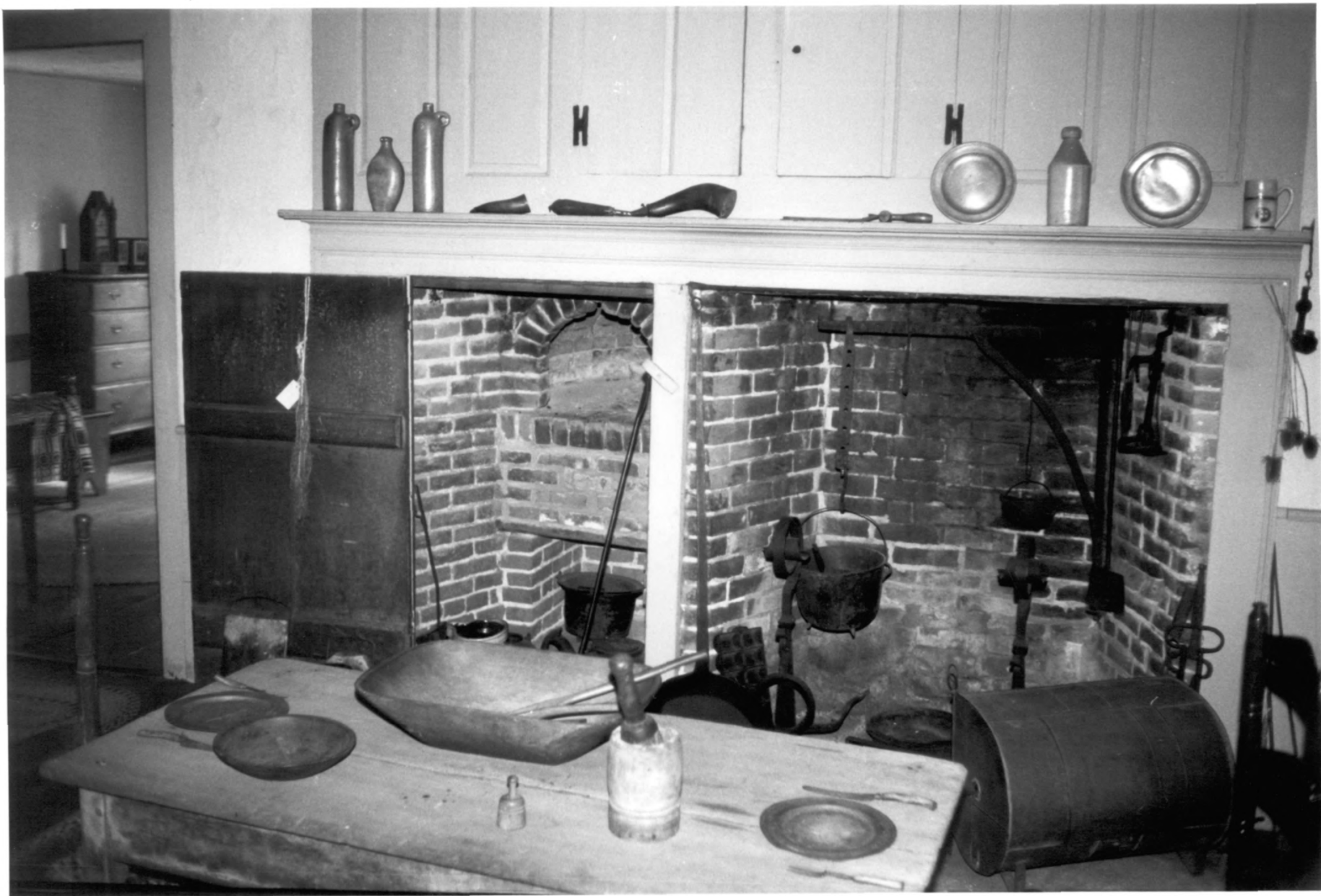
New Haven County, CT

D. Ransom Photo, 6/80

Negative: Connecticut  
Historical Commission

BACK OF CORNER CUPBOARD,  
VIEW WEST

Photograph 6 of 8



Jonathan Dickerman II House  
105 Mt. Carmel Avenue  
Hamden

New Haven County, CT

D. Ransom Photo, 6/80

Negative: Connecticut  
Historical Commission

KITCHEN FIREPLACE, VIEW  
SOUTHWEST

Photograph 7 of 8



Jonathan Dickerman II House  
105 Mt. Carmel Avenue  
Hamden

New Haven County, CT  
D. Ransom Photo, 6/80  
Negative: Connecticut  
Historical Commission  
RAFTERS/PLATE FRAMING,  
VIEW SOUTHWEST  
Photograph 8 of 8