



1. Russian Bishop's House (center)
and Old School (right); Sitka
National Historical Park
2. Sitka, Alaska
3. 4. nd. 5. SNHP
6. view to northwest
7. P18; M1



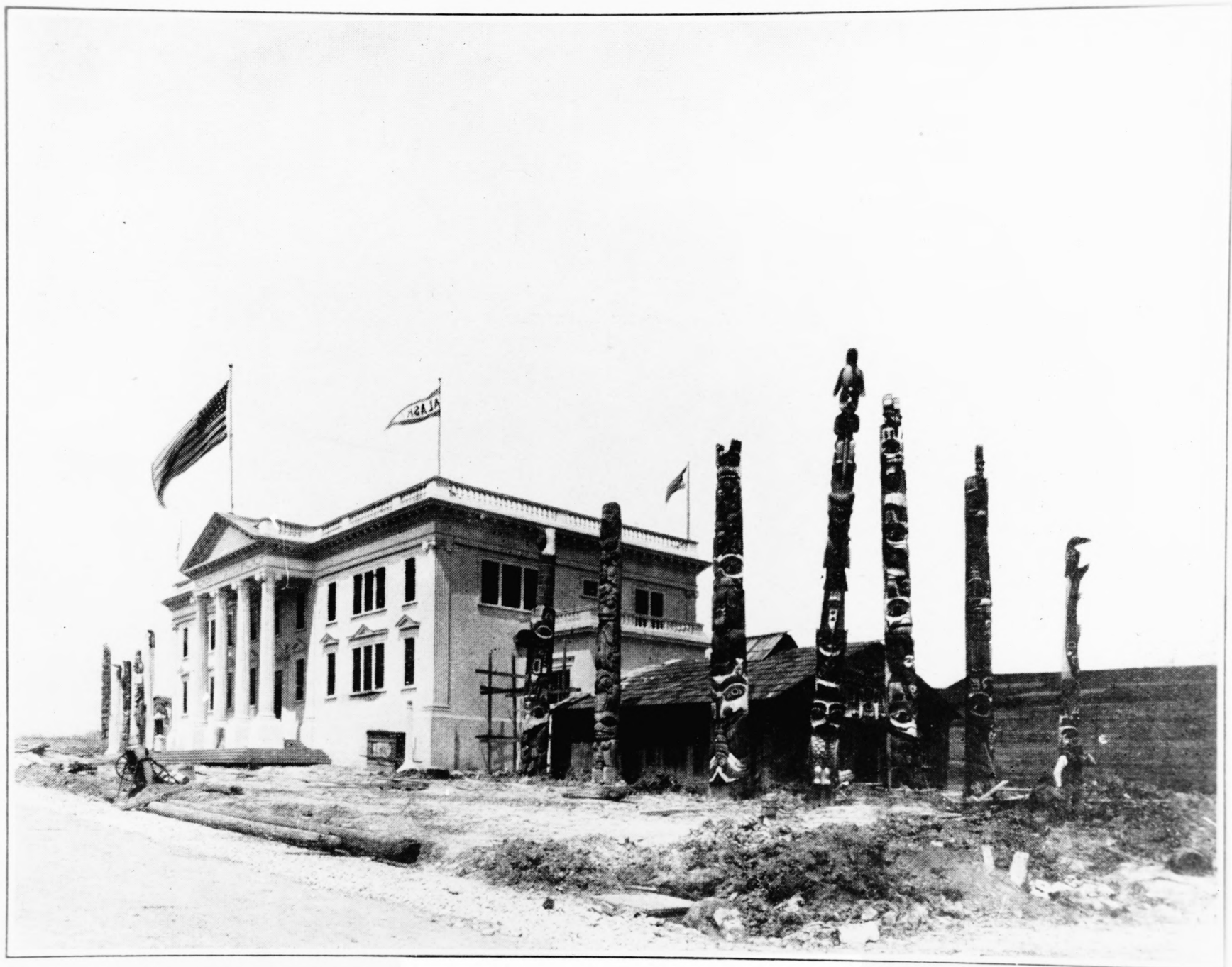
1. Russian Bishop's House (left), Old School (center); Sitka National Historical Park
2. Sitka, Alaska
3. 4. ca 1941
5. Isabel Miller Historical Museum
6. view to northeast 7. P19; M1



S. J. 2.

1. Saanaheit Pole at original location, Old Kassan, Alaska (center rear); Sitka National Historical Park
 2. Sitka, Alaska
 - 3.
 - 4.
 5. SNHP
 - 6.
 7. P22; M2,3
-

INDIAN TERRITORY.



ALASKA, TOTEM POLES.

1. Brady collection of Alaska Totem
Poles, Louisiana Purchase
Exposition, St. Louis; Sitka
National Historical Park
2. Sitka, Alaska
3. E, W, Merrill
4. 1904
5. SNHP
- 6.
7. P 23



1930s. 1930s. 1930s. 1930s. 1930s. 1930s. 1930s. 1930s. 1930s. 1930s.

KODAK PLUS-X PAN FILM PACK

This medium-speed, panchromatic film has extremely fine grain and very high acutance, which provide improved picture sharpness, even at very high degrees of enlargement.

Handle the pack only by the edges. Pressure on the *Safety Cover* must be avoided to prevent light from entering the pack and fogging the edges of the film.

When the pack is securely in position for use, carefully pull the tab marked "Safety Cover" straight out as far as it will come. After you have made the first exposure, pull the tab marked "1" straight out as far as it will come, holding back the remaining tabs to avoid pulling more than one at a time. This leaves film No. "2" ready for use.

In the same manner, expose each successive film and pull its tab. The

1. Brady collection of Alaska Totem
Poles at Lewis & Clark Exposition,
Portland; Sitka National Historical
Park
2. Sitka, Alaska
- 3.
- 4.
5. SNHP
- 6.
7. P24



1. Saanaheit Pole and House Posts,
Sitka National Monument: Sitka
National Historical Park

2. Sitka, Alaska

3. 4. 1932 5. SNHP 6.

7. P30; I11.5



1. Wolf Pole on original site; Sitka
National Historical Park
2. Sitka, Alaska
3. E.W. Merrill
4. 5. SNHP 6.
7. P32; I11.5



1. Indian River with wooden bridge;
Sitka National Historical Park
2. Sitka, Alaska
3. Copper River Kennicott collection
- 4.
5. Alaska Historical Library, Juneau
6. 7. P35; M1



1. Sitka Parade Grounds, showing
Blockhouse C (center rear);
Sitka National Historical Park
2. Sitka, Alaska
3. Copper River Kennicott collection
4. 5. Alaska Historical Library
6. 7. P37; M1



1. Blockhouse D; Sitka National
Historical Park
2. Sitka, Alaska
3. E.W. Merrill
4. pre-WWI
5. SNHP
6. looking toward the Russian
burying ground
7. P38; M1



No. 37.
INDIAN RIVER
SITKA ALASKA
C.S.A.

1. Indian River, 1897-98; Sitka
National Historical Park
2. Sitka, Alaska
3. Andrews collection
4. 5. University of Oregon
- 6.
7. P36;M1



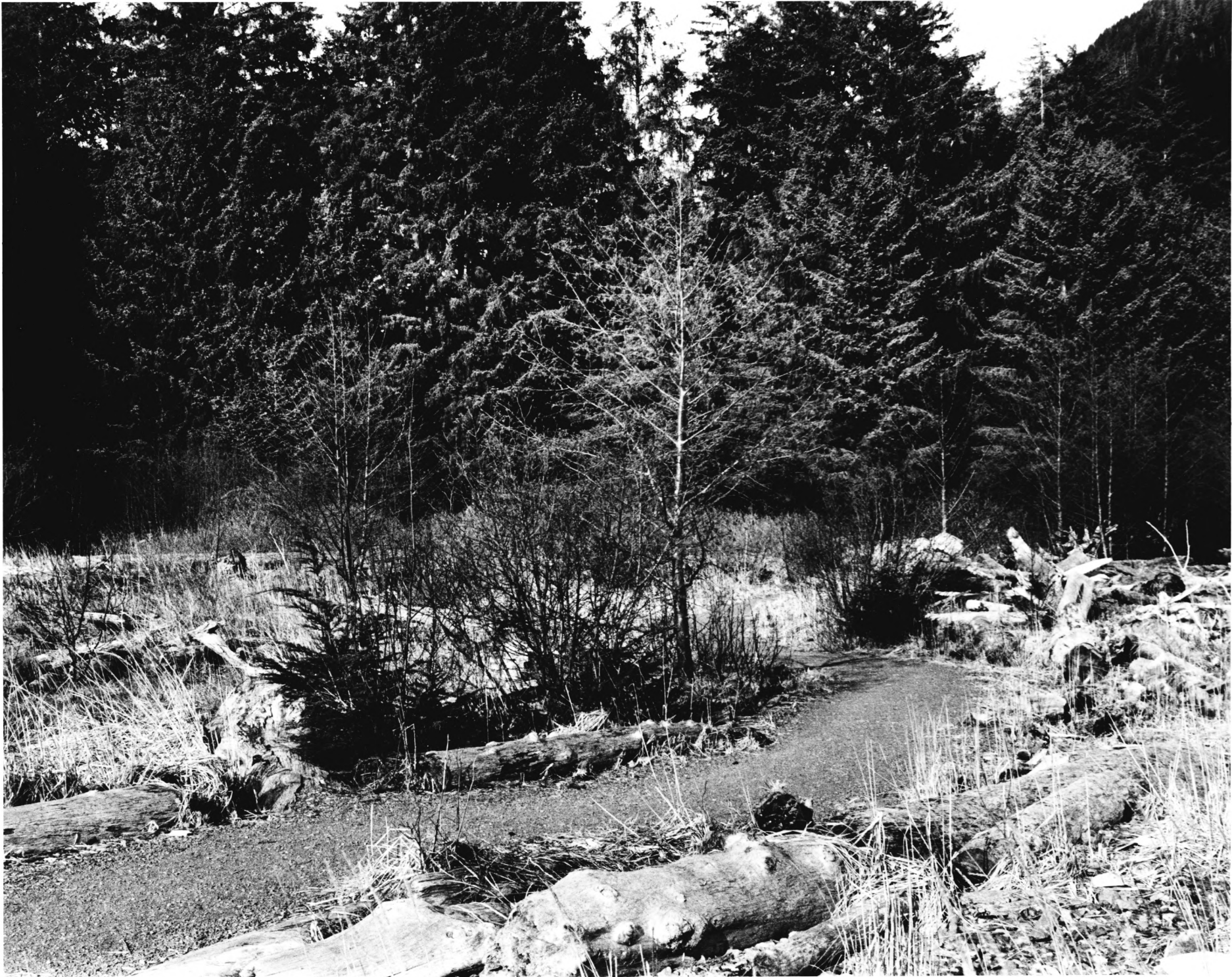
THE
RUSSIAN ATTACK

On the morning of June 17, 1854, a detachment of the 1st Cavalry, 1st Infantry, and 1st Artillery, under the command of Major General W. H. Taylor, defeated the Russian forces at the Battle of Fort Mifflin. The Russian forces, consisting of the 1st and 2nd Divisions of the Far Eastern Army, were defeated and retreated to the coast. The battle was a decisive victory for the United States and marked the end of the Russian-American War.

1. Battleground; Sitka National Historical Park
2. Sitka, Alaska
3. Scott Taylor
4. 2-18-87
5. NPS/ARO
6. View from west showing plaque
7. P1; M1,2,3



- 2
1. Battleground; Sitka National Historical Park
 2. Sitka, Alaska
 3. Scott Taylor
 4. 2-18-87
 5. NPS/ARO
 6. view from west
 7. P2; M1,2,3



1. Battleground; Sitka National
Historical Park
2. Sitka, Alaska
3. Scott Taylor
4. 2-18-87
5. NPS/ARO
6. view from south, & beach
7. P3; M1,2,3



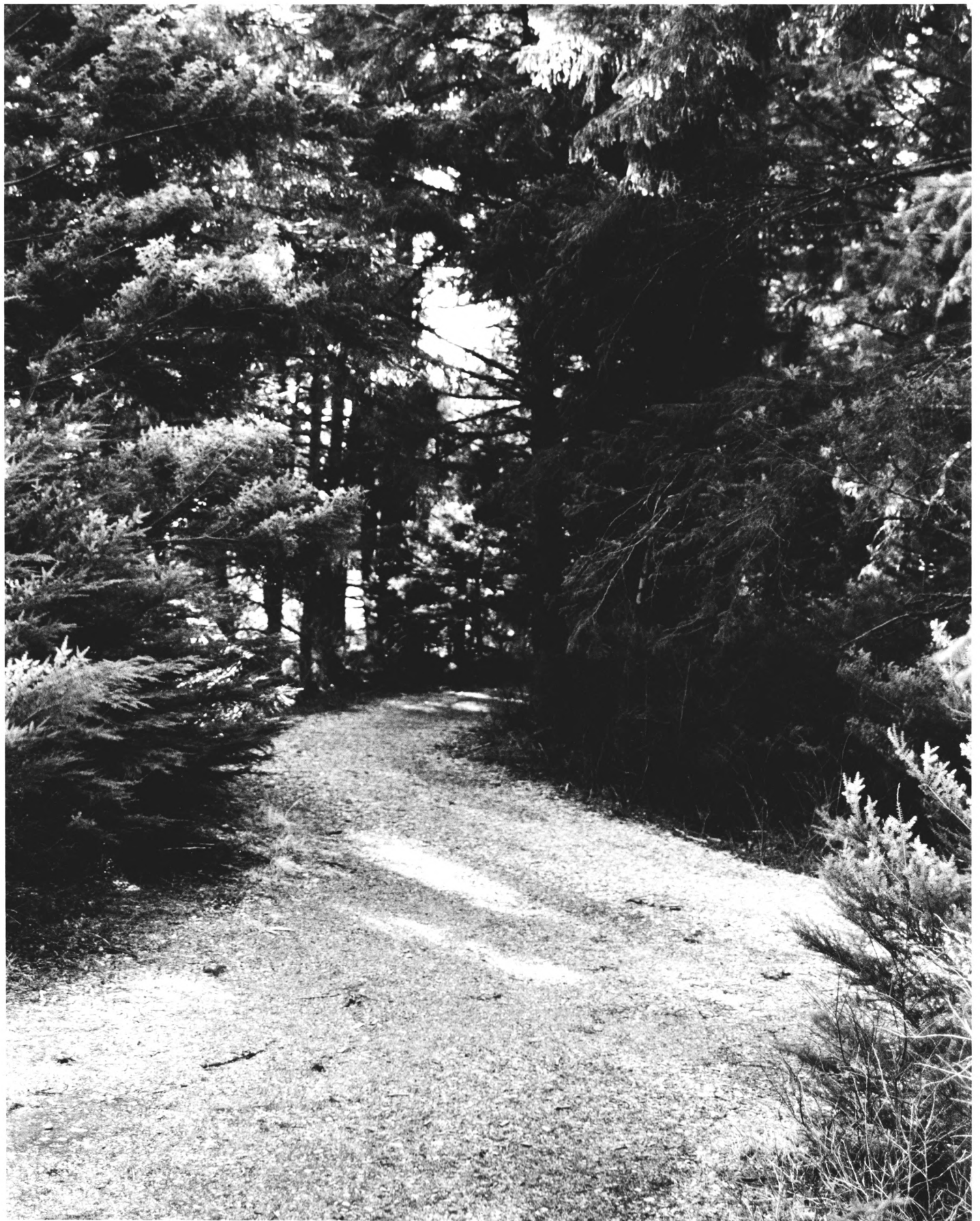
1. Battle Site; Sitka National Historical Park
2. Sitka, Alaska
3. Scott Taylor
4. 2-18-87
5. NPS/ARO
6. from east bank of river
7. P4; M1,2,3



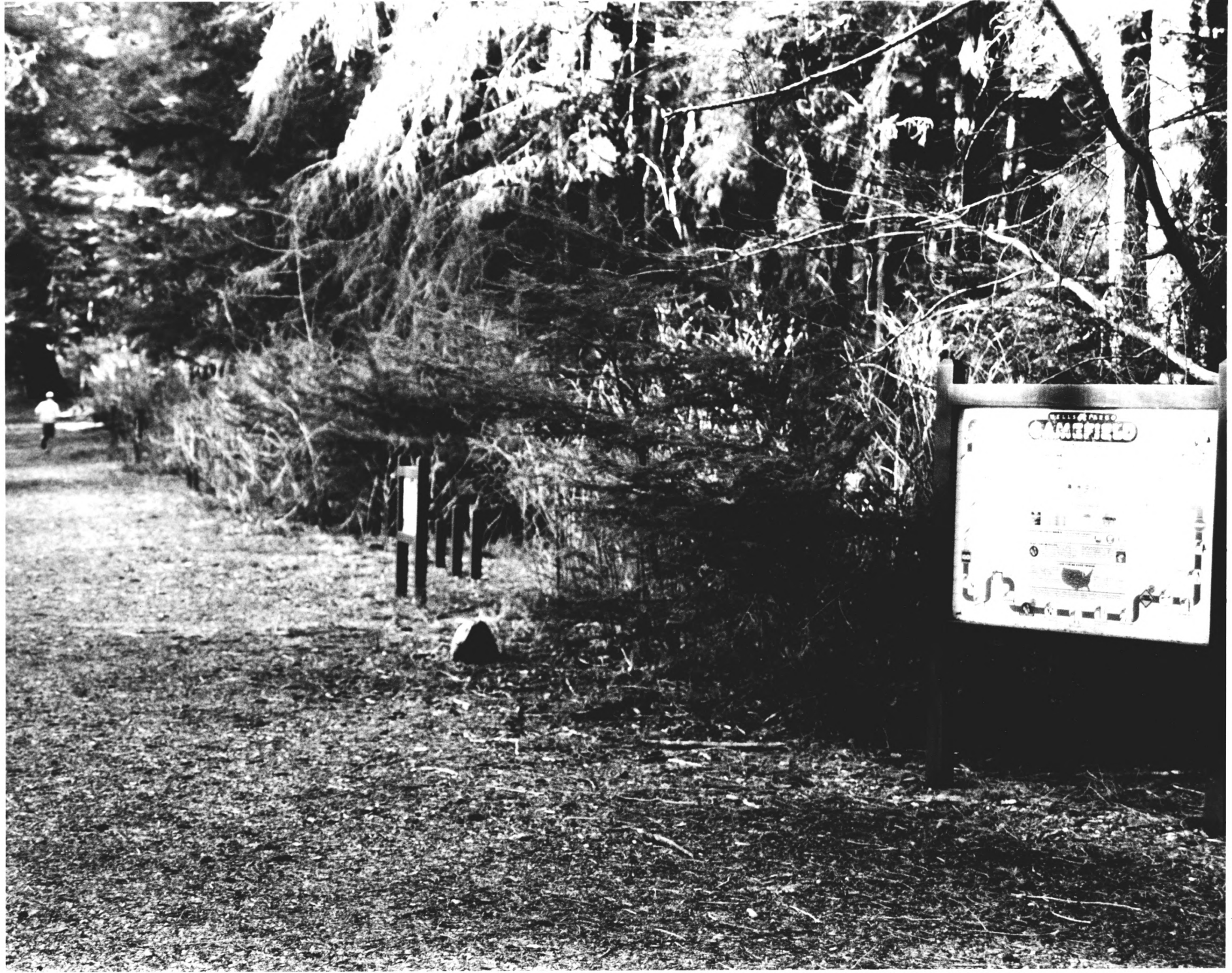
1. Fort Site; Sitka National Historical Park
2. Sitka, Alaska
3. Scott Taylor
4. 2-18-87
5. NPS/ARO
6. view to NE
7. P5; M1,2,3; I11. 1,2



1. Fort Site; Sitka National Historical Park
2. Sitka, Alaska
3. Scott Taylor
4. 2-18-87
5. NPS/ARO
6. view from east river
7. P6; M1,2,3



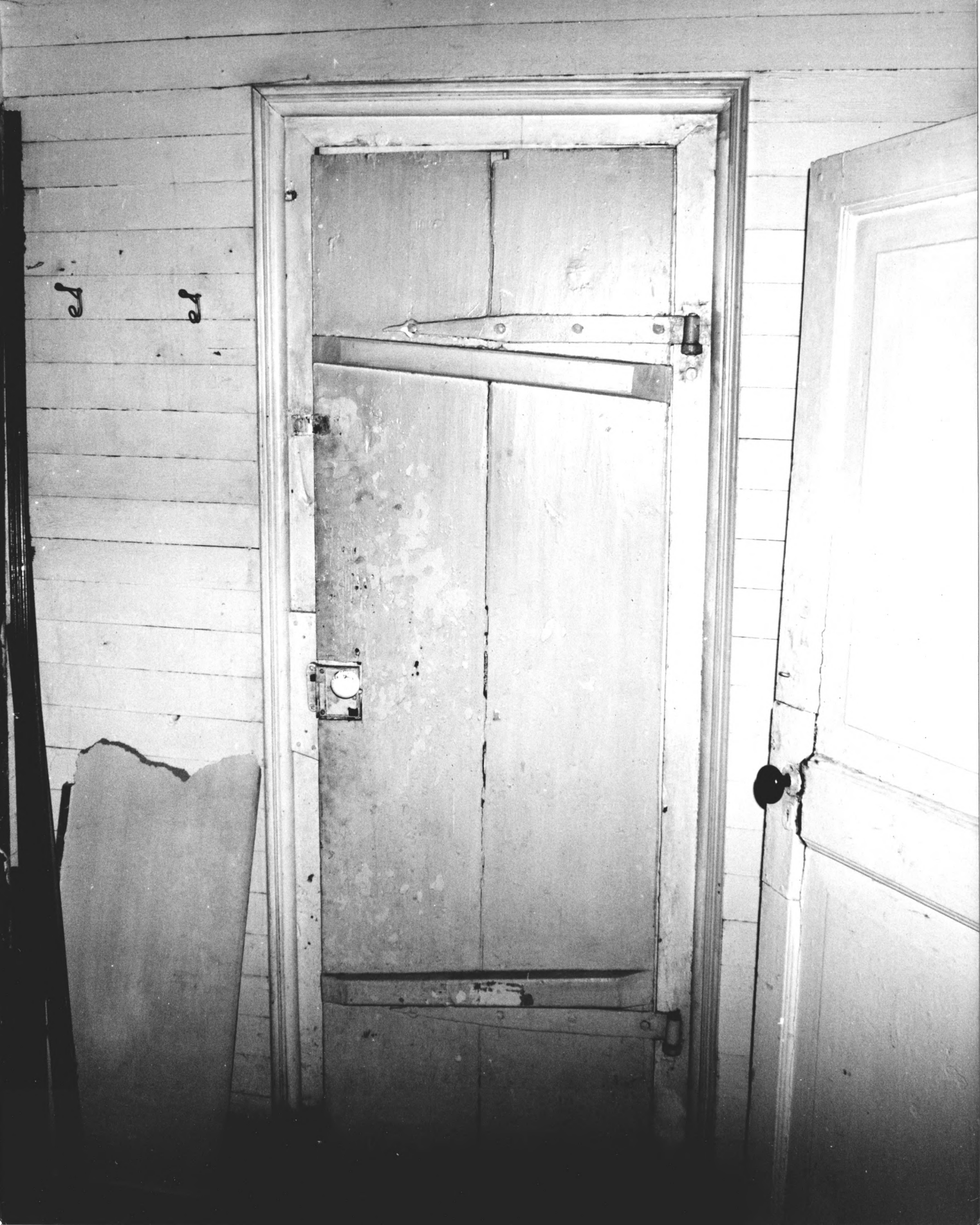
1. Lovers Lane; Sitka National
Historical Park
2. Sitka, Alaska
3. Scott Taylor
4. 2-18-87
5. NPS/ARO
6. view west from Indian River
7. P8; M2



1. Jogging course; Sitka National
Historical Park
2. Sitka, Alaska
3. Scott Taylor
4. 2-18-87
5. NPS/ARO
6. east side of trail
7. P15; M1



1. Old School, interior; Sitka
National Historical Park
2. Sitka, Alaska
3. A. Lewis Koue
- 4 nd 5. SNHP 6.
7. P20; M1



e

e

1. Old School, detail-door; Sitka
National Historical Park
2. Sitka, Alaska
3. A. Lewis Koue
4. nd 5. SNHP 6.
7. P21; M1



1. Cormorant Mortuary Pole-original,
detail, Sitka National Monument;
Sitka National Historical Park
2. Sitka, Alaska
- 3.
- 4.
5. SNHP
- 6.
7. P29; I11. 5



1. Yaadaas Crest Pole, First Twin,
Sitka National Monument; Sitka
National Historical Park
2. Sitka, Alaska
3. E.W. Merrill
- 4.
5. SNHP
- 6.
7. P 34; Ill. 5



1. Lover's Lane, Yaadaas Crest
Corner (first twin); Sitka
National Historical Park
2. Sitka, Alaska
3. Scott Taylor
4. 2-18-87
5. NPS/ARO
6. looking south
7. P7; M2,3



FEB • 65

1. NPS Reconstruction of Blockhouse D,
on site of Blockhouse C; Sitka
National Historical Park
2. Sitka, Alaska
3. Hussey
4. 1965
5. SNHP
- 6.
7. P39; M1



1. Cormorant Mortuary Pole- original,
Sitka National Monument; Sitka
National Historical Park
2. Sitka, Alaska
3. 4. 5. SNHP 6.
7. P28; I11.5



1. Ganaxadi/Raven Pole in original location; Sitka National Historical Park

2. Sitka, Alaska

3. 4. nd

5. SNHP 6.

7. P25; I11. 5



1. Ganaxadi/Raven Pole-reproduction;
Sitka National Historical Park
2. Sitka, Alaska
3. 4. 5. SNHP 6.
7. P27;M3



1. Saanaheit Pole and House Posts,
Sitka National Monument; Sitka
National Historical Park
2. Sitka, Alaska
3. 4. 1966
5. SNHP 6.
7. P31; Ill. 5



1. Wolf Pole; Sitka National
Historical Park
2. Sitka, Alaska
- 3.
- 4.
5. SNHP
- 6.
7. P33; M2,3



1. Old School; Sitka National
Historical Park
2. Sitka, Alaska
3. Scott Taylor
4. 2-18-87
5. NPS/ARO
6. from the southeast
7. P10; M1



1. Old School; Sitka National
Historical Park
2. Sitka, Alaska
3. Scott Taylor
4. 2-18-87
5. NPS/ARO
6. from the southwest
7. P11; M1;



1. MOUTH OF INDIAN RIVER; Sitka
National Historical Park
2. Sitka, Alaska
3. Scott Taylor
4. 2-18-87
5. NPS/ARO
6. view upstream
7. P9; M1



1. Old School; Sitka National
Historical Park
2. Sitka, Alaska
3. Scott Taylor
4. 2-18-87
5. NPS/ARO
6. from the northwest
7. P12; M1;



1. Visitor Center; Sitka National
Historical Park
 2. Sitka, Alaska
 3. Scott Taylor
 4. 2-18-87
 5. NPS/ARO
 6. looking south
 7. P13; M1
-



1. Maintenance Building; Sitka
National Historical Park
2. Sitka, Alaska
3. Scott Taylor
4. 2-18-87
5. NPS/ARO
- 6.
7. P14;M1



1. Picnic Shelter; Sitka National
Historical Park
2. Sitka, Alaska
3. Scott Taylor
4. 2-18-87
5. NPS/ARO
6. view across footbridge
7. P16; M1



ER
THE
AND
IN
KIKSA

N MEM
N MDS
LORS
WITH
NS IN

1. Russian Memorial; Sitka
National Historical Park
2. Sitka, Alaska
3. Scott Taylor
4. 2-18-87
5. NPS/ARO
6. looking south
7. P17; M1