

Air view of Washington University campus from the northeast, approximately the same perspective as the following sketch map. (Washington University Photographic Service, 1985)



North edge of Francis Field, showing Francis Gymnasium (1902), at northwest corner.
(James H. Charleton, National Park Service, 1985)



Main Gate of Francis Field (1902-03), looking west. (James H. Charleton, National Park Service, 1985)



South side of Francis Field, looking southwest. (James H. Charleton, National Park Service, 1985)



Wilson Hall from northeast.
(Washington University Photographic
Service, 1978)



Brookings Hall, from southeast.
(Washington University Photographic
Service, 1978)



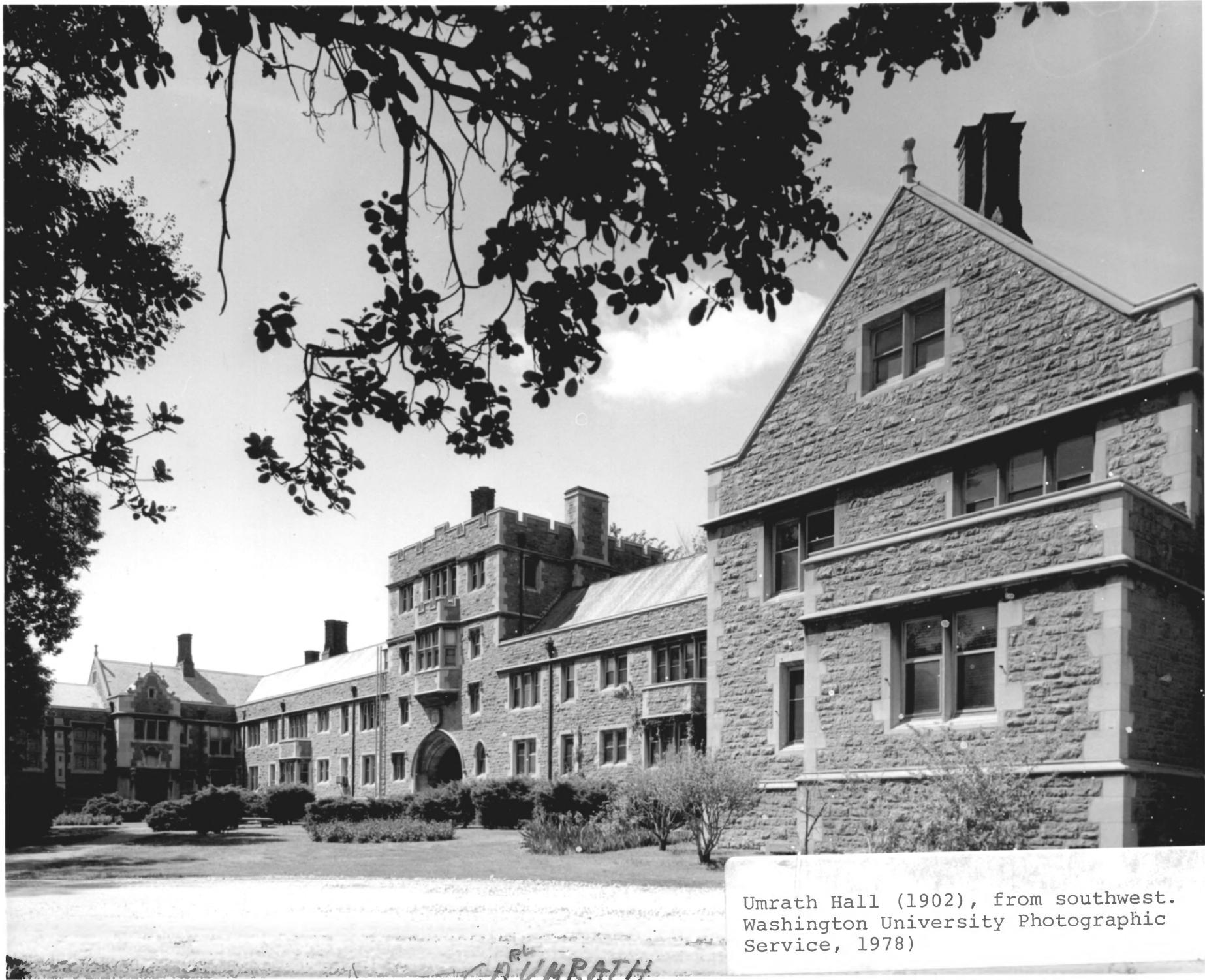
Ridgley Library (1901), from northeast.
(Washington University Photographic
Service, 1978)



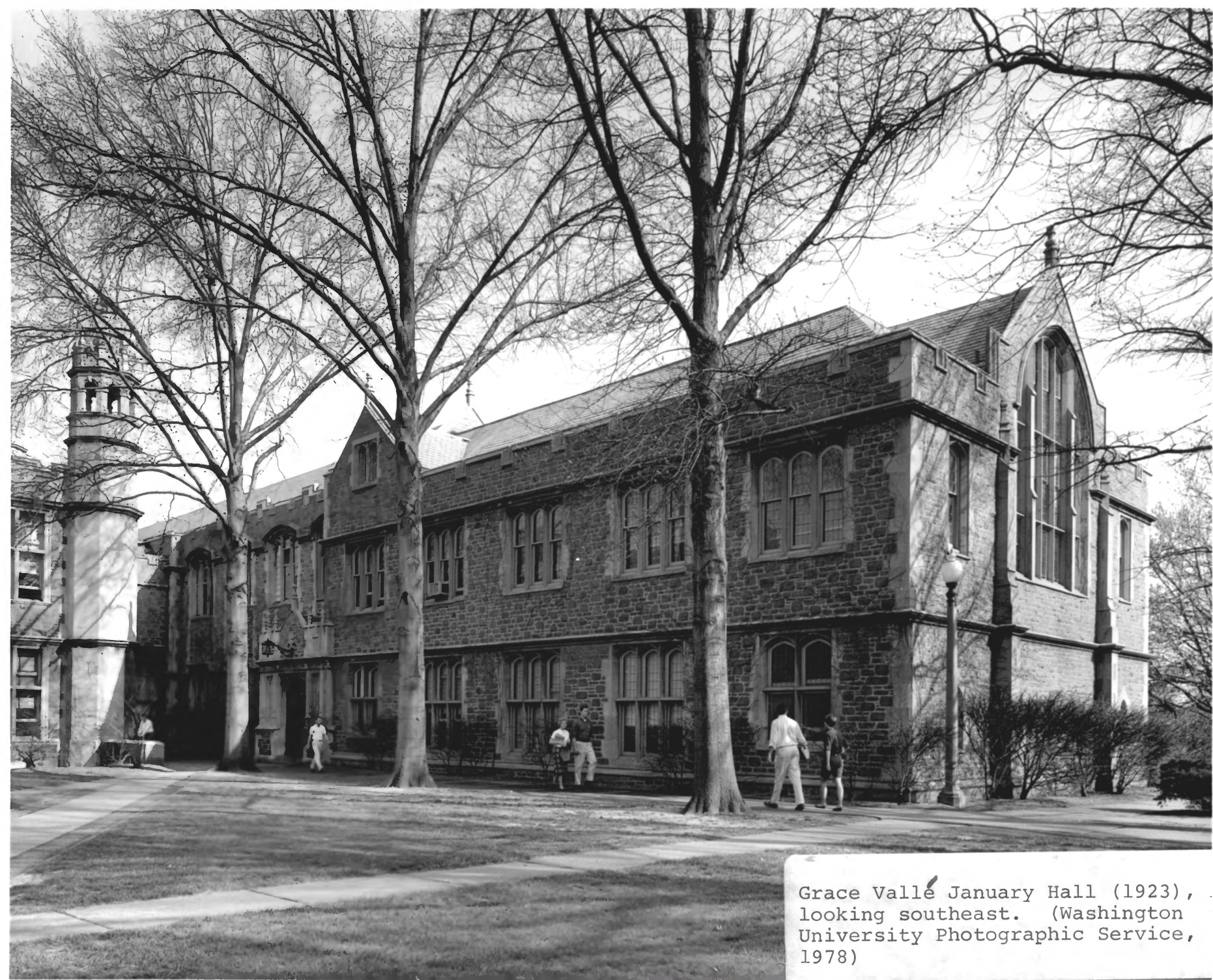
Prince Hall (1901), from southeast.
(Washington University Photographic Service,
1978)



Cupples Hall II (1901), from southwest. (Washington University Photographic Service, 1978.)



Umrath Hall (1902), from southwest.
Washington University Photographic
Service, 1978)



Grace Vallé January Hall (1923),
looking southeast. (Washington
University Photographic Service,
1978)