

United States Department of the Interior
National Park Service

NATIONAL REGISTER OF HISTORIC PLACES
CONTINUATION SHEET

Rosedale Apartments

Cranston

Providence County, RI

Name of Property

City/Town

County and State

Section Number 10

Page 1

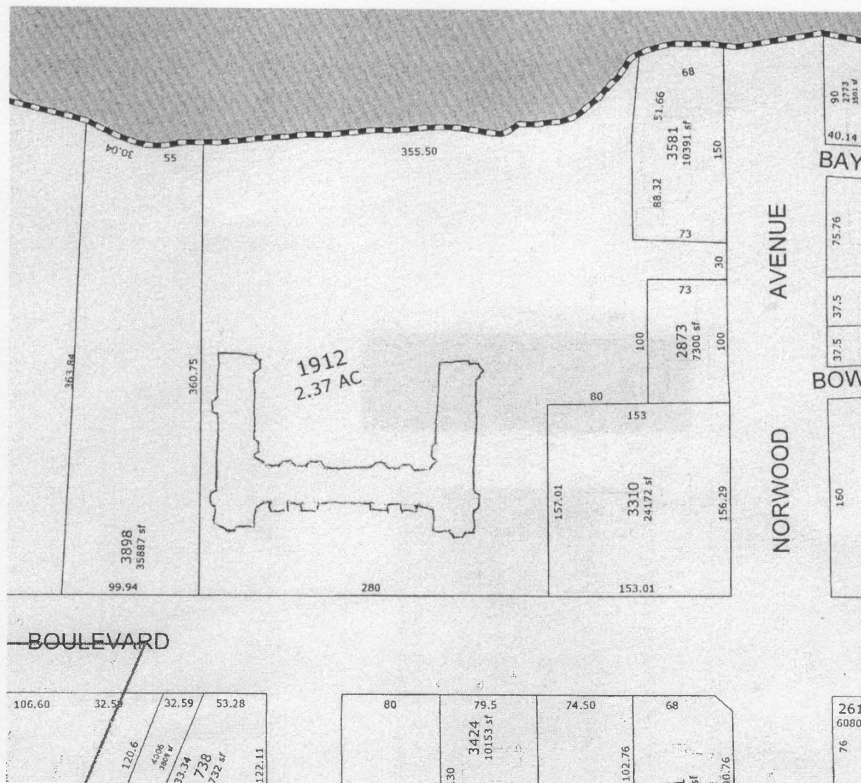
GEOGRAPHICAL DATA

Boundary Description

The boundaries of the Rosedale Apartments are contiguous with Cranston Tax Assessor's Plat Map 2 Lot 1912.

Boundary Justification

These boundaries, comprising 2.4 acres, define the land historically associated with the Rosedale Apartments from 1939 to the present.



United States Department of the Interior
National Park Service

NATIONAL REGISTER OF HISTORIC PLACES
CONTINUATION SHEET

Rosedale Apartments

Cranston

Providence County, RI

Name of Property

City/Town

County and State

Section Number 10 Page 2

Rosedale Apartments
1180 Narragansett Boulevard
Cranston, RI
Providence, RI, Quadrangle
Scale: 1: 24,000



United States Department of the Interior
National Park Service

**NATIONAL REGISTER OF HISTORIC PLACES
CONTINUATION SHEET**

Rosedale Apartments

Cranston

Providence, Rhode Island

Name of Property

City/Town

County and State

Section Number

Add'l
Info

Page

1

ADDITIONAL INFORMATION



Figure 1
Historical photo of Rosedale Apartments
Front elevation, ca 1940.
Courtesy of Steven R. and Joanna Hunt

NATIONAL REGISTER OF HISTORIC PLACES
CONTINUATION SHEET

Section Number	Page	County	State
1	1	Clark	West Virginia

ADDITIONAL INFORMATION

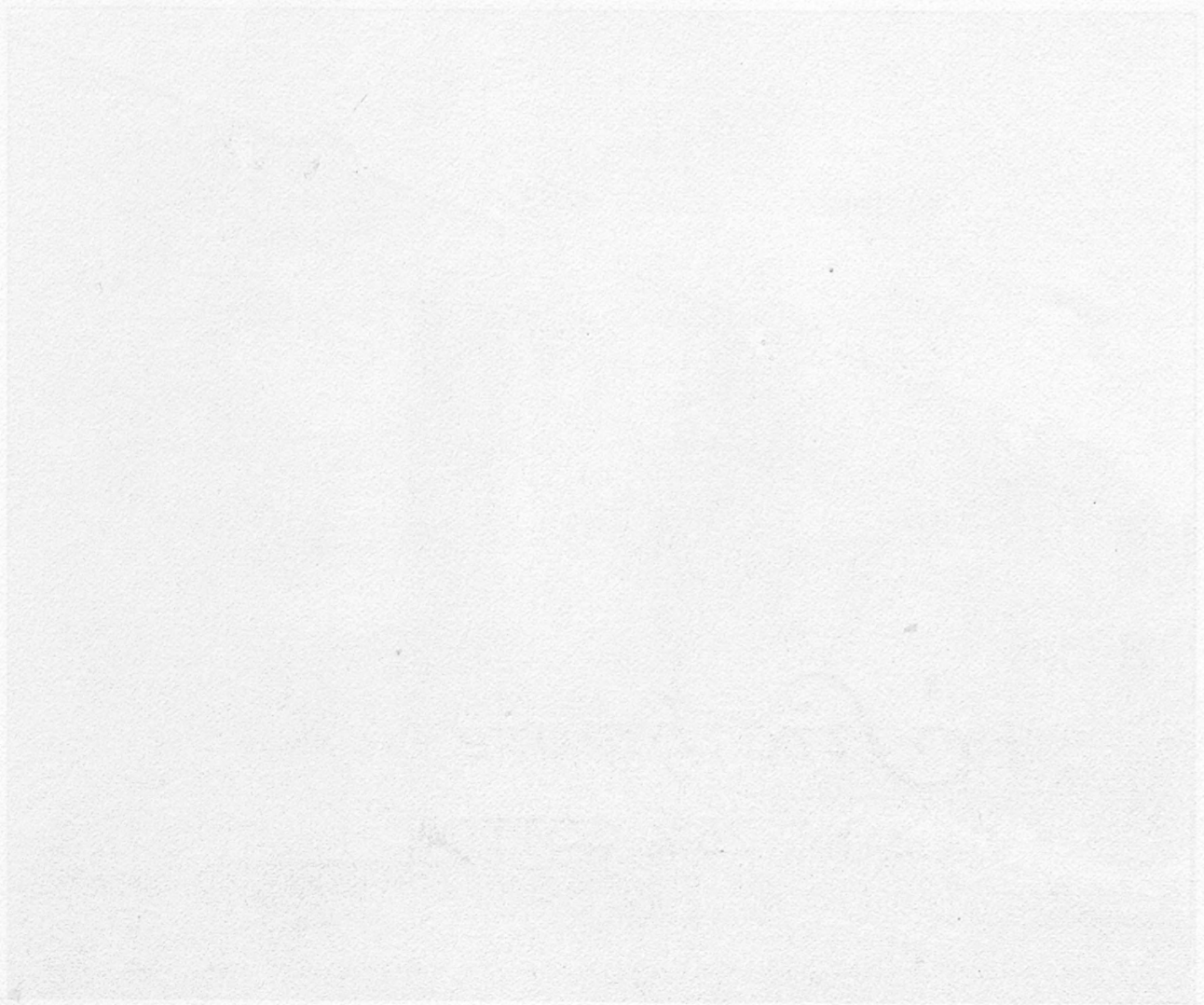


Figure 1
Historical photo of Rosebush Apartments
taken ca. 1940
Courtesy of Mary R. and James R. [Name]

United States Department of the Interior
National Park Service

**NATIONAL REGISTER OF HISTORIC PLACES
CONTINUATION SHEET**

Rosedale Apartments

Cranston

Providence, Rhode Island

Name of Property

City/Town

County and State

Section Number

Add'l
Info

Page

2



Figure 2

Historical photo of Rosedale Apartments
Rear elevation, ca 1940

Courtesy of Steven R. and Joanna Hunt

United States Department of the Interior
National Park Service

**NATIONAL REGISTER OF HISTORIC PLACES
CONTINUATION SHEET**

Rosedale Apartments

Cranston

Providence, Rhode Island

Name of Property

City/Town

County and State

Section Number

Add'l
Info

Page

3

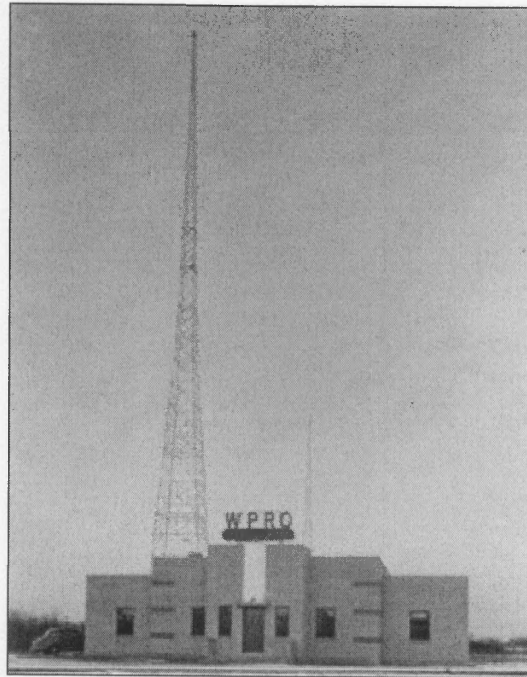


Figure 3
WPRO Transmitter Building (1940)
East Providence, Rhode Island
Courtesy of WPRO

United States Department of the Interior
National Park Service

NATIONAL REGISTER OF HISTORIC PLACES
CONTINUATION SHEET

Rosedale Apartments

Cranston

Providence, Rhode Island

Name of Property

City/Town

County and State

Section Number Add'l Info Page 4

Come..look..marvel at the "New American" Home
Air Conditioning... All-electric kitchen... Scientific lighting... Automatic heat... Electric laundry... Low cost...

Hundreds of these demonstration homes are now nearing completion all over the country... one will be open for exhibition near you this month.

WHAT IS THE "NEW AMERICAN" HOME?
"New American" is not a style of architecture. It is a house designed from the inside out to provide greater comfort, less labor and better health for the entire family.

LAST SPRING 9,000 architects entered the General Electric architectural competition. And from it came the "New American" home—an entirely new conception of what a dwelling place for American families ought to be like. It is a type of house designed from the inside out instead of the other way round.

These "New American" homes are not any particular style of architecture. On the outside they may be Colonial, or Georgian, or even so-called Modern. But *inside* they all have one thing in common... they are the most livable houses you ever saw.

As the leading maker of equipment for the home, the General Electric Company is vitally interested in improved standards of living for American homes. So we have sponsored the building of hundreds of "New American" demonstration homes in population centers all over the country. G-E does not build these houses. They are put up by local builders, and financed locally. They are on free public exhibition for a short time, and will then be sold.

By all means go to see the "New American" home nearest you. It shows what can be done to provide new standards of health, comfort and convenience for the entire family—in a new house or your present home. We invite you to visit the "New American" home immediately, and to send for the free 16-page illustrated booklet "How to Make Your Home 'New American'." Any G-E dealer will tell you where the nearest house is, and the booklet may be had by writing General Electric Company, Demonstration Home Department, 570 Lexington Ave., New York.

NO "BLUE MONDAYS" HERE—The laundry in this house is a pleasant place. Cold equipment does the heavy work at the flip of a switch. And almost all the money you save on laundry bills.

It's easy to get the most out of your kitchen all the way up to the "New American" Home. With G-E appliances you get the most out of your kitchen.

COMPLETE ELECTRIC KITCHEN—Kitchen "work" isn't really work at all in the "New American" home. The utensils are "built in"—by G-E. All working surfaces are adequately lighted.

AIR CONDITIONING—The "New American" home is air-conditioned and cooled automatically by G-E. The gas furnace is specially constructed. The entire heater is placed in a separate room.

Ask any GENERAL ELECTRIC dealer where to see the "New American" Home.

Figure 4
General Electric's "New American" Home
From *Better Homes and Gardens*, November 1935

United States Department of the Interior
National Park Service

**NATIONAL REGISTER OF HISTORIC PLACES
CONTINUATION SHEET**

Rosedale Apartments

Cranston

Providence, Rhode Island

Name of Property

City/Town

County and State

Section Number

Add'l
Info

Page

5



Figure 5

1939-40 General Electric refrigerator
detail from *Collier's Magazine* advertisement
*Note tiered, tripartite design, vertical "speed stripes" in door,
and stainless steel striping in the kick panel/vent*



ROSEDALE APARTMENTS
PROVIDENCE COUNTY, RI

PHOTOGRAPH # 1



ROSEDALE APARTMENTS

PROVIDENCE COUNTY, RI

PHOTOGRAPH # 2



ROSEDALE APARTMENTS

PROVIDENCE COUNTY, RI

PHOTOGRAPH # 3



ROSEDALE APARTMENTS

PROVIDENCE COUNTY, RI

PHOTOGRAPH # 4



ROSEDALE APARTMENTS

PROVIDENCE COUNTY, RI

PHOTOGRAPH #5



ROSEDALE APARTMENTS
PROVIDENCE COUNTY, RI

PHOTOGRAPH #6



