



1. Cate, Asa F., Farm
2. McMinnville, Yamhill County, Oregon
3. Jane Morrison
4. August 1989
5. Tom Alkoff
139 Marine St.
St. Augustine, Florida
6. Cate house - facade (east elevation)
7. (1 of 7)



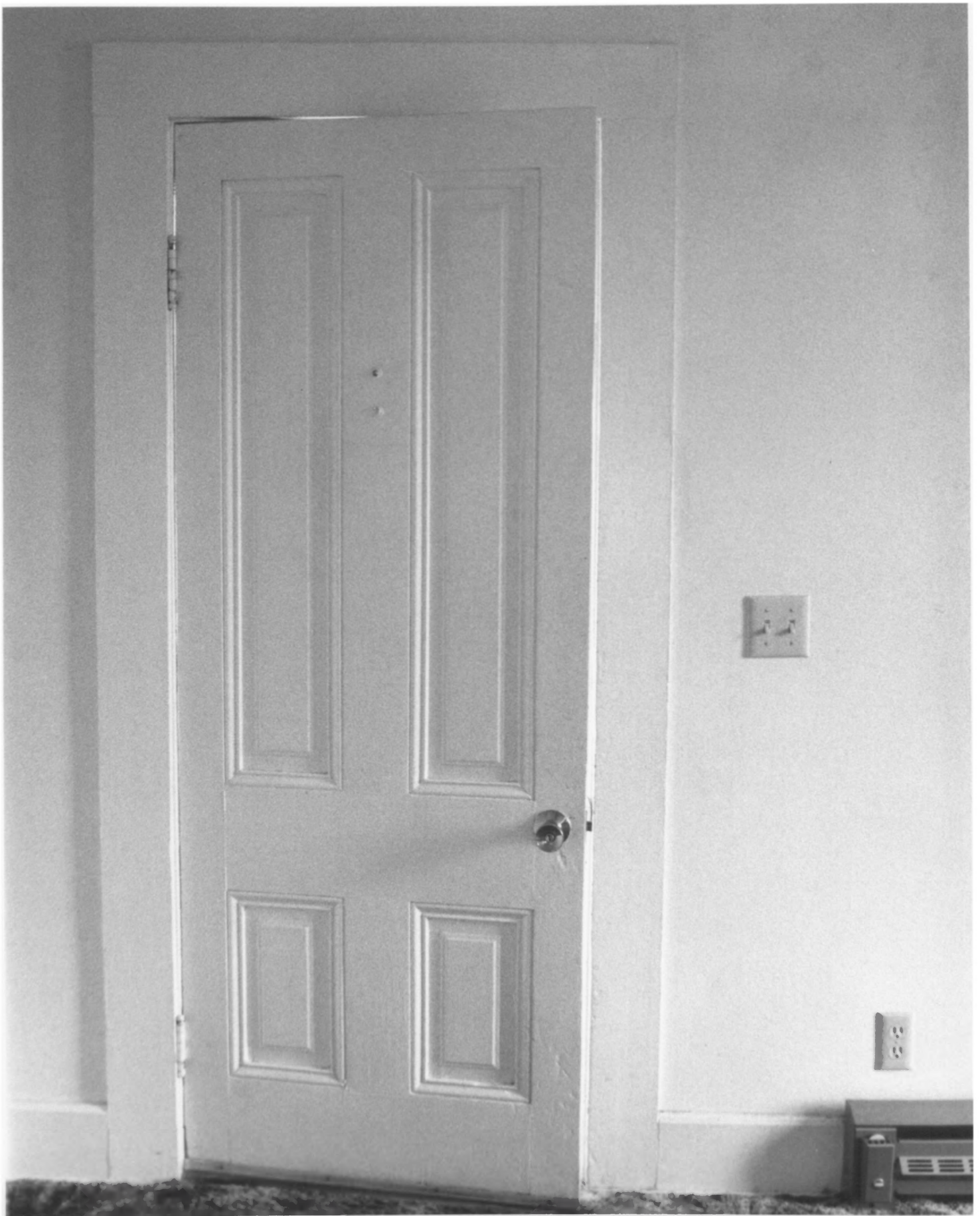
1. Cate, Asa F., Farm
2. McMinnville, Yamhill County, Oregon
3. Jane Morrison
4. August 1989
5. Tom Alkoff
139 Marine St.
St. Augustine, FL,
6. Cate House - south elevation
7. (2 of 7)



1. Cate, Asa F., Farm
2. McMinnville, Yamhill County, Oregon
3. Jane Morrison
4. August 1989
5. Tom Alkoff
139 Marine St.
St. Augustine, FL
6. Cate House - north elevation
7. (3 of 7)



1. Cate, Asa F., Farm
2. McMinnville, Yamhill County, Oregon
3. Jane Morrison
4. August 1989
5. Tom Alkoff
139 Marine St,
St. Augustine, FL
6. Cate House - Entrance
7. (4 of 7)



1. Cate, Asa F., Farm
2. McMinnville, Yamhill county, Oregon
3. Jane Morrison
4. August 1989
5. Tom Alkoff
139 Marine St.
St. Augustine, FL.
6. Cate House - Interior detail
7. (5 of 7)



1. Cate, Asa F., Farm
2. McMinnville, Yamhill County, Oregon
3. Jane Morrison
4. August 1989
5. Tom Alkoff
139 Marine St.
St. Augustine, FL
6. Wood Shed - east elevation
7. (6 of 7)



1. Cate, Asa F., Farm
2. McMinnville, Yamhill County, Oregon
3. Jane Morrison
4. August 1989
5. Tom Aikoff
139 Marine St.
St. Augustine, FL
6. Barn
7. (7 of 7)