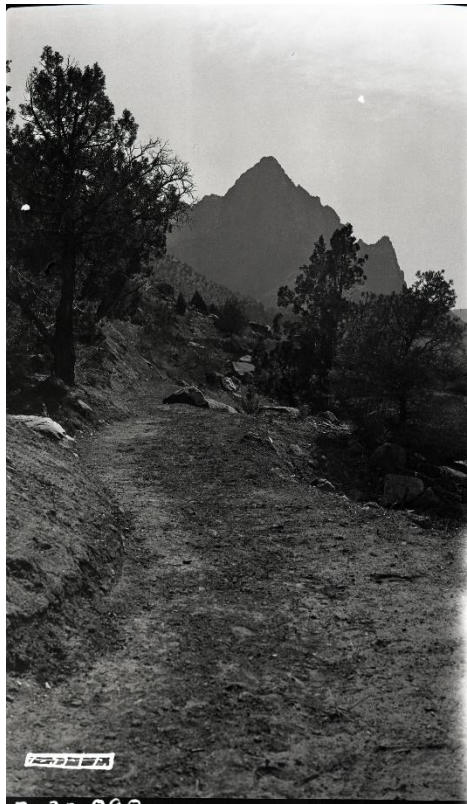




## FINDING AID

# Parunuweap Canyon Archaeological District National Register Archival Collection 9/28/1989



Catalog Number ZION 13171  
Accession Number ZION-01015

Prepared by Museum Staff 05/1998  
Updated by Hema Lochan 07/2016  
National Park Service

## ***TABLE OF CONTENTS***

<i>COPYRIGHT AND RESTRICTIONS</i> .....	iii
<i>HISTORY</i> .....	iv
<i>SCOPE AND CONTENT</i> .....	v
<i>HIERARCHY</i> .....	6
<i>SERIES DESCRIPTIONS</i> .....	7

(Cover Image: ZION 10215)

## *COPYRIGHT AND RESTRICTIONS*

The copyright law of the United States (Title 17, United States Code) governs the making of photocopies or other reproductions of copyrighted materials. The various state privacy acts govern the use of materials that document private individuals, groups, and corporations.

Under certain conditions specified in the law, libraries and archives are authorized to furnish a reproduction if the document does not infringe the privacy rights of an individual, group, or corporation. These specified conditions of authorized use include:

- non-commercial and non-profit study, scholarship, or research, or teaching
- criticism, commentary, or news reporting
- as a NPS preservation or security copy
- as a research copy for deposit in another institution

If a user later uses a copy or reproduction for purposes in excess of "fair use," the user may be personally liable for copyright, privacy, or publicity infringement. This institution's permission to obtain a photographic, xerographic, digital, or other copy of a document doesn't indicate permission to publish, exhibit, perform, reproduce, sell, distribute, or prepare derivative works from this document without first obtaining permission from the copyright holder and from any private individual, group, or corporation shown or otherwise recorded.

Permission to publish, exhibit, perform, reproduce, prepare derivative works from, sell, or otherwise distribute the item must be obtained by the user separately in writing from the holder of the original copyright (or if the creator is dead from his/her heirs) as well as from any individual(s), groups, or corporations whose name, image, recorded words, or private information (e.g., employment information) may be reproduced in the source material. The holder of the original copyright isn't necessarily the National Park Service. The National Park Service is not legally liable for copyright, privacy, or publicity infringement when materials are wrongfully used after being provided to researchers for "fair use."

This institution reserves the right to refuse to accept a copying order if fulfillment of the order is judged in violation of copyright or federal or state privacy or publicity law.

## *HISTORY*

National Register of Historic Places Registration Form, b/w photographs, maps, memoranda, letters, and associated documentation related to the Parunuweap Canyon Archaeological District.

The Parunuweap Canyon Archeological District includes ruins dating all the way back from 500-1150 AD. These ruins come from Ancient Pueblo People and Virgin Anasazi peoples.

On November 7<sup>th</sup>, 1996, this site was listed on the National Register of Historic Places. The reference number is 96001235.

## *SCOPE AND CONTENT*

### Parunuweap Canyon National Register Archival Collection

CATALOG NUMBER	ZION 13171
ACCESSION NUMBER	ZION-01015
VOLUME	79 EA
DESCRIPTION	National Register of Historic Places Registration Form, b/w photographs, maps, memoranda, letters, and associated documentation related to the Parunuweap Canyon Archaeological District.
ORGANIZATION	Organized into 21 Series. Series 1: National Register of Historic Places Registration Form Series 2: Photographs Series 3: Memorandum dated September 20, 1996 Series 4: Letter dated August 8, 1996 Series 5: Letter (draft) not dated Series 6: Letter, dated June 26, 1996 Series 7: Letter (two pages) Series 8: Letter (draft of a cover memorandum) Series 9: Memorandum Series 10: Letter, dated March 6, 1995 Series 11: Letter (cover memorandum) Series 12: Letter (copy), dated February 14, 1995 Series 13: Letter (copy) dated February 14, 1995 Series 14: Letter (copy), dated February 14, 1995 Series 15: Letter (cover memorandum), dated January 26, 1995 Series 16: Letter (copy) and four page attachment Series 17: Letter (four pages, copy) dated September 1, 1994 Series 18: Memorandum (photocopy) Series 19: Letter (two pages, copy), dated May 31, 1994 Series 20: Letter (cover memorandum), dated May 2, 1994 Series 21: National Register of Historic Places Registration Form
PROVENANCE	Documents related to the Parunuweap Canyon Archeological District. Stored in the Museum Archives
RESTRICTIONS	No
ASSOCIATED MATERIALS	None

---

## ***HIERARCHY***

Series 1: National Register of Historic Places Registration Form

Series 2: Photographs

Series 3: Memorandum dated September 20, 1996

Series 4: Letter dated August 8, 1996

Series 5: Letter (draft) not dated

Series 6: Letter, dated June 26, 1996

Series 7: Letter (two pages)

Series 8: Letter (draft of a cover memorandum),

Series 9: Memorandum

Series 10: Letter, dated March 6, 1995

Series 11: Letter (cover memorandum)

Series 12: Letter (copy), dated February 14, 1995

Series 13: Letter (copy) dated February 14, 1995

Series 14: Letter (copy), dated February 14, 1995

Series 15: Letter (cover memorandum), dated January 26, 1995

Series 16: Letter (copy) and four page attachment

Series 17: Letter (four pages, copy) dated September 1, 1994

Series 18: Memorandum (photocopy),

Series 19: Letter (two pages, copy), dated May 31, 1994

Series 20: Letter (cover memorandum), dated May 2, 1994

Series 21: National Register of Historic Places Registration Form

## ***SERIES DESCRIPTIONS***

### Series 1:

National Register of Historic Places Registration Form, 29 pages (including b/w photographs, tables, and drawings), + two maps.

### Series 2:

Twelve 5"x7" b/w photographs:

- Parunuweap Canyon, looking southeast from the Stevens wash area
- Parunuweap Canyon, looking southwest from the Stevens wash area
- Northeast view up Parunuweap Canyon (2 photographs)
- Archaeological site number 42WS121, view of prehistoric structures in alcove, facing east (2 photographs)
- Archaeological site number 42WS121, view of prehistoric structures in alcove facing west (2 photographs)
- Archaeological site number 42WS120, view of pictographs on back wall of rock overhang, facing north (2 photographs)
- Archaeological site number 42WS1786, view of the Virgin Anasazi
- Open habitation site on ridge top, facing northeast (2 photographs)

### Series 3:

Memorandum dated September 20, 1996, to the keeper of the National Register, from the Director of the National Center for Cultural Resource Stewardship and partnership Programs, concerning Parunuweap Canyon, Everglades, and Ocmulgee NM.

### Series 4:

Letter dated August 8, 1996, to ZION Superintendent Donald Falvey, from Wilson G. Martin of the Utah State Historical Society, concerning the Parunuweap Canyon Archaeological District National Register Nomination

### Series 5:

Letter (draft) not dated, to Max Evans of the Utah Historical Society, from ZION Superintendent Donald Falvey, concerning the Parunuweap Canyon Archaeological District National Register Nomination

### Series 6:

Letter, dated June 26, 1996, to Washington County commissioner Gayle Allred, from Wilson G. Martin of the Utah State Historical Society, concerning the Parunuweap Canyon Archaeological district national Register Nomination

### Series 7:

Letter (two pages) with two page attachment, date June 26, 1996 to ZION Superintendent Donald Falvey, from Wilson G. martin of the Utah State Historical society, concerning the Parunuweap Canyon Archaeological District National Register

## Series 8:

Letter (draft of a cover memorandum), dated June 11, 1996, to Max Evans (ATTN: Wilson Martin, of the Utah State Historical Society, from ZION Superintendent Donald Falvey, concerning the Parunuweap Canyon Archaeological District National Register Nomination

## Series 9:

Memorandum, one page printed copy of an electronic communication, dated June 3, 1996, to Jack Burns, ZION, from Adrienne Anderson, NPS Intermountain Region Archaeologist, concerning the Parunuweap Canyon Archaeological District National Register Nomination

## Series 10:

Letter, dated March 6, 1995, to Jack Burns, ZION, from Angelita S. Bullets, Kaibab Paiute Tribe, concerning the Tribe's absence of comments related to the Parunuweap Canyon Archaeological District National Register Nomination and the Paiute word Pa'rus.

## Series 11:

Letter (cover memorandum), dated February 28, 1995, to Adrienne Anderson, NPS Intermountain Region Archaeologist, from Alpine Archaeological Consultants, concerning the Parunuweap Canyon Archaeological District National Register Nomination

## Series 12:

Letter (copy), dated February 14, 1995, to Leigh Jenkins, Cultural Preservation Officer of the Hopi Tribe, from ZION Superintendent Donald Falvey, concerning the Tribe's comments related to the Parunuweap Canyon Archaeological District National Register Nomination

## Series 13:

Letter (copy) dated February 14, 1995, Gloria Bullets Benson, Tribal Chair of the Kaibab Paiute Tribe of Utah, from ZION Superintendent Donald Falvey, concerning the Tribe's comments related to the Parunuweap Canyon Archaeological District National Register Nomination

## Series 14:

Letter (copy), dated February 14, 1995, to Alex O. Shepard, Tribal Chair of the Paiute Tribe of Utah from ZION Superintendent Donald Falvey, concerning the Tribe's comments related to the Parunuweap Canyon Archaeological District National Register Nomination

## Series 15:

Letter (cover memorandum), dated January 26, 1995, to Adrienne Anderson, NPS Intermountain region Archaeologist, from Alpine Archaeological Consultant's, concerning a revised version of the Parunuweap Canyon Archaeological district national Register Nomination



## Series 16:

Letter (copy) and four page attachment (map, figures, site numbers, and boundary description), dated October 3, 1994, to Susan Chandler of Alpine Archaeological Consultants, from ZION Assistant Superintendent Eddie Lopez, concerning revised boundary delineation for the Parunuweap Canyon Archaeological District.

## Series 17:

Letter (four pages, copy) dated September 1, 1994 to Susan Chandler of Alpine Archaeological Consultant's, from Adrienne Anderson, NPS Intermountain Region Archaeologist, concerning review and comments related to the draft National Registration Form for the Parunuweap Canyon Archaeological District

## Series 18:

Memorandum (photocopy), dated January 5, 1994 to Jim Firor, from ZION Archaeologist Laird Naylor, concerning archaeological site forms related to Parunuweap Canyon

## Series 19:

Letter (two pages, copy), dated May 31, 1994, to Susan Chandler of Alpine Archaeological Consultants, from ZION Superintendent Donald Falvey, concerning review and comments related to the draft National Registration Nomination form for the Parunuweap Canyon Archaeological District

## Series 20:

Letter (cover memorandum), dated May 2, 1994, to Adrienne Anderson, NPS Intermountain Region Archaeologist, from alpine Archaeological Consultants, concerning the the draft copy of the Parunuweap Canyon Archaeological district National Register Nomination form

## Series 21:

National Register of Historic Places Registration Form (draft copy), 14 pages (including tables, drawings, and one map)