

RECEIVED 413

489

United States Department of the Interior  
National Park Service

MAY 04 1993

NATIONAL REGISTER OF HISTORIC PLACES  
REGISTRATION FORM

1. Name of Property

historic name: Raymond Munger Memorial Chapel; Univ. of the Ozarks

other name/site number: N/A

2. Location

street & number: University of the Ozarks Campus (west of State Highway 103)

not for publication: N/A

city/town: Clarksville

vicinity: N/A

state: AR county: Johnson code: AR 071 zip code: 72830

3. Classification

Ownership of Property: Private

Category of Property: Building

Number of Resources within Property:

Contributing	Noncontributing
<u>1</u>	<u>      </u> buildings
<u>      </u>	<u>      </u> sites
<u>      </u>	<u>      </u> structures
<u>      </u>	<u>      </u> objects
<u>1</u>	<u>0</u> Total

Number of contributing resources previously listed in the National Register: N/A

Name of related multiple property listing: N/A

=====

#### 4. State/Federal Agency Certification

=====

As the designated authority under the National Historic Preservation Act of 1986, as amended, I hereby certify that this X nomination \_\_\_\_\_ request for determination of eligibility meets the documentation standards for registering properties in the National Register of Historic Places and meets the procedural and professional requirements set forth in 36 CFR Part 60. In my opinion, the property X meets \_\_\_\_\_ does not meet the National Register Criteria. \_\_\_\_\_ See continuation sheet.

Cathryn R. Slater  
Signature of certifying official

4-13-93  
Date

Arkansas Historic Preservation Program  
State or Federal agency and bureau

In my opinion, the property \_\_\_\_\_ meets \_\_\_\_\_ does not meet the National Register criteria. \_\_\_\_\_ See continuation sheet.

\_\_\_\_\_  
Signature of commenting or other official

\_\_\_\_\_  
Date

\_\_\_\_\_  
State or Federal agency and bureau

=====

#### 5. National Park Service Certification

=====

I, hereby certify that this property is:

- ☒ entered in the National Register  
\_\_\_\_\_ See continuation sheet.  
☐ determined eligible for the  
National Register  
\_\_\_\_\_ See continuation sheet.  
☐ determined not eligible for the  
National Register  
☐ removed from the National Register  
\_\_\_\_\_ other (explain): \_\_\_\_\_

~~Entered in the~~  
~~National Register~~

Alonzo Byers 6/8/93

\_\_\_\_\_  
Signature of Keeper      Date  
of Action

=====

#### 6. Function or Use

=====

Historic: RELIGION

Sub: Religious Facility

Current: RELIGION

Sub: Religious Facility

=====

## 7. Description

=====

Architectural Classification:

Collegiate Gothic

\_\_\_\_\_  
\_\_\_\_\_  
\_\_\_\_\_  
\_\_\_\_\_

Other Description: N/A

Materials: foundation Stone/Limestone roof Stone/Slate  
walls Stone/Limestone other Stained glass

\_\_\_\_\_

Describe present and historic physical appearance. X See continuation sheet.

=====

## 8. Statement of Significance

=====

Certifying official has considered the significance of this property in relation to other properties: Locally.

Applicable National Register Criteria: C

Criteria Considerations (Exceptions): A

Areas of Significance: ARCHITECTURE

\_\_\_\_\_  
\_\_\_\_\_  
\_\_\_\_\_  
\_\_\_\_\_  
\_\_\_\_\_

Period(s) of Significance: 1932

Significant Dates: 1932

Significant Person(s): N/A

\_\_\_\_\_

Cultural Affiliation: N/A

Architect/Builder: Clark, A. O./Kraus, Gomer

\_\_\_\_\_  
\_\_\_\_\_

State significance of property, and justify criteria, criteria considerations, and areas and periods of significance noted above.  
X See continuation sheet.

United States Department of the Interior  
National Park Service

# National Register of Historic Places Continuation Sheet

Section number 7 Page 1

---

## Summary

Located to the west of State Highway 103 on the campus of the University of the Ozarks in Clarksville, the Raymond Munger Memorial Chapel is a two-story, stone masonry church building designed in the Collegiate Gothic style of architecture. Designed in 1932 by the Rogers, Arkansas architect A.O. Clark, the building has suffered virtually no alterations since its original construction.

## Elaboration

The Raymond Munger Memorial Chapel is a two-story, cut stone masonry construction church building designed in the Collegiate Gothic style. Its' plan is essentially rectangular, though the sanctuary and chancel are flanked by externally-expressed single-story aisles that terminate at their western end in perpendicular, gable-roofed, projecting entrance bays that provide access to the anterooms at the western end of the sanctuary. The attic beneath the gable roof is ventilated by three raised, gable roof vents placed evenly along the ridgeline, and two asymmetrically-placed stone chimneys rise from the raised stone parapet above the western or rear wall. The gable roof is sheathed with slate shingles and supported upon the stone walls and continuous stone foundation. A raised basement extends beneath the entire structure.

The eastern or front elevation is symmetrically-composed and consists of the central monumental Gothic window placed directly above the pair of recessed, double-leaf entrances set into a slightly-projecting entrance bay. The raised entrances are accessed via a stone staircase and flanked by two smaller stained-glass windows. The wall surfaces to either side of the entrances feature slightly-projecting bays sloped at the top to resemble buttresses. These projecting bays are each fenestrated with a single, central blind lancet with surmounting decorative shield and accessed via a single central entrance in the raised basement below that is itself set into a pointed arch lintel. A central blind lancet placed directly above the monumental window is ornamented with a tall raised figure that resembles a chalice with a long stem, and the raised parapet above is coped with stone.

The northern and southern elevations are virtually identical. The buttressed, six-bay length of the sanctuary proper is broken only by the single-story projecting aisle that begins at the second window bay from the eastern end and continues to the western end, terminating in the aforementioned projecting, perpendicular parapeted bays that house the entrances into the rear of the church. The second story (clerestory) of the sanctuary is uniformly fenestrated in all but the westernmost of its six bays with a single, monumental Gothic window formed by four tall

**United States Department of the Interior  
National Park Service****National Register of Historic Places  
Continuation Sheet**Section number 7 Page 2

---

stained-glass windows capped by three small, stained-glass quatrefoils. Each window is set into a molded stone surround with a stone sill. The westernmost bay on the second story is blank. The first story is fenestrated with a single, centrally-placed grouping of three square-headed stained-glass windows in each bay, a form that is matched in the fenestration of the raised basement below (though the basement windows are eight-pane casements, while those directly above are fixed). Stepped buttresses separate the bays and the westernmost bay of the first-story aisle is composed of a gable-roofed, projecting bay the eastern face of which features an entrance that is accessed via a flight of stone steps. This entrance bay is dominated by the raised, triangular stone parapet and the stepped stone buttresses that frame the centrally-placed windows.

The western or rear elevation is similar to the eastern elevation opposite, in that it too features a single, centrally-placed monumental Gothic window in the upper story and two slightly-projecting wall bays to either side that are blank except for a single square-headed, rectangular window opening in the first story thereof; however, all other wall surfaces are blank.

The significant exterior details are largely limited to the monumental Gothic windows throughout, the raised stone parapets that echo the pointed arch motif, the stepped stone buttresses that add gravity and weight to the overall composition, and the ashlar-faced cut stone employed throughout the building that lend its exterior walls a distinctively rough-hewn and medieval texture.

The interior, though relatively simple in appointment for such a large Gothic church building, retains all of its defining original features. The large expanses of light plaster wall surface are relieved by the stained-glass windows on both floors and the wood hammerbeam ceiling that supports the roof. Carved wooden angels adorn the projecting ends of the hammerbeams and open arched openings below the clerestory provide access into the flanking aisles. The handsome wood box pews and tile floor are all original. The western end of the chancel is lit by a tripartite stained-glass lancet window grouping containing Christ in the central window, surmounted by a smaller window containing the cross of faith. The window to the left of Christ contains the apostle Peter, himself surmounted by another window containing the anchor of hope. The window to the right of Christ contains the figure of the apostle James surmounted by the smaller window that features the cups of charity and love. These are the only figural windows in the building. The interior is finished by the Reuter Organ, which was installed at the time of the building's construction.

The Raymond Munger Memorial Chapel is almost completely unaltered and has in fact been the focus of an intensive and sensitive restoration campaign that was recently completed. It is thus in excellent condition and continues to be used for religious services as well as a variety of

**United States Department of the Interior**  
**National Park Service**

# **National Register of Historic Places**

## **Continuation Sheet**

Section number 7 Page 3

---

musical performances and events.

United States Department of the Interior  
National Park Service

## National Register of Historic Places Continuation Sheet

Section number 8 Page 1

---

### Summary

### Criterion C, local significance

The Raymond Munger Memorial Chapel at the University of the Ozarks is locally significant under Criterion C as the best example in the city of Clarksville of a pure Collegiate Gothic-style religious building. Of particular note are the monumental pointed-arch windows that light the nave, the buttressed, single-story aisles, and the ashlar-faced stone employed throughout the exterior to enhance the church's medieval character.

### Elaboration

The present-day University of the Ozarks, located in Clarksville, traces its beginnings to northwest Arkansas and the small Washington County community of Cane Hill. Cane Hill was first settled by people of European descent in 1827. A group of Cumberland Presbyterians from Tennessee and Kentucky came to the Arkansas Territory, first via the Arkansas River as far as Van Buren, and then overland by horse and wagon to the area that would become Cane Hill -- so-named for the abundance of cane on the rolling, hilly landscape -- though it was first named Boonesboro, for its first postmaster, a Mr. Boone. By 1834 these settlers initiated efforts to establish the community's first school. Called Cane Hill College, its earliest mandate was the education of young men for the Presbyterian ministry, though the school dedicated itself to education for all, and welcomed any qualified male students from the surrounding area (it would later welcome female students also). By 1850 the school became known as the Cane Hill Collegiate Institute, though it changed its name back to Cane Hill College in 1852 when it was awarded its official charter by the Arkansas General Assembly. Though most of the original school buildings were burned during the Civil War, the college resumed operations thereafter, using other local buildings as available, and soon had re-built to the point that women were admitted.

The establishment in 1872 of the University of Arkansas at Fayetteville (approximately twenty miles to the northeast) proved to be the beginning of the end of Cane Hill College as such. Established as a land grant college by the General Assembly, the University of Arkansas proved to be the more popular institution of higher learning for the area, a status that was only enhanced by the arrival of the Frisco Railroad in Fayetteville in 1881, making it far more accessible than Boonesboro. Though the Cumberland Presbyterian Synod had technically been involved in the administration and direction of the school since its inception, it was only when faced with the dramatic decline in enrollment and the growing cognizance of the need for a school of higher education that the Synod took direct control of the fate of Cane Hill College. By 1887 the Synod appointed a committee to raise money for the endowment of another college to be located



United States Department of the Interior  
National Park ServiceNational Register of Historic Places  
Continuation SheetSection number 8 Page 2

---

elsewhere in the state. In 1891 the Synod of Arkansas of the Cumberland Presbyterian Church met in Little Rock to discuss the location of the new college and ultimately the city of Clarksville was selected. That same year a temporary board of trustees met to draft articles of association and to adopt a new constitution and by-laws. The new college was named Arkansas Cumberland College; it opened its doors on September 8, 1891 with an enrollment of approximately 150 students. Though the fledgling college struggled at its new location -- even closing between 1897 and 1899 -- firm and dedicated leadership held the college on course, and it became firmly established by the second decade of the twentieth century.

It was the generosity of Miss Jessie D. Munger of Plainfield, New Jersey that began the effort to construct the building on the campus of the College of the Ozarks (later the University of the Ozarks) that would become the Raymond Munger Memorial Chapel. Miss Munger had agreed to donate the money needed for the chapel by the early 1930's, with construction scheduled to begin in 1933, but the devastating effects of the Depression upon the college plans of many prospective students forced school officials to move that date up a year. Named after her late father, Miss Munger understood the school's need to proceed with the construction at the earliest possible date so that student labor could be employed thereon, thereby providing these students with an income that would allow them to remain in school. Miss Munger donated the \$75,000 needed for the project in 1932 and construction began immediately. Students provided the labor that resulted in the relocation of two existing houses from the proposed site, the foundation excavation, the laying of the foundation, and the hauling of materials. The limestone was obtained from the Batesville Limestone Quarry in Batesville, Arkansas and the Nu-Carth stone used for the trim was purchased from Carthage, Missouri. It was formally dedicated on February 8, 1933.

The Raymond Munger Memorial Chapel was designed by the Rogers, Arkansas architect A. O. Clark and constructed under the supervision of the contractor Gomer Kraus of Clarksville. Known for his many public, institutional, residential and commercial designs, virtually all of which are designed in some variation of the Classical idiom, the Raymond Munger Memorial Chapel stands as one of A. O. Clark's few known commissions outside this idiom. Nevertheless, his deft handling of both the traditional vocabulary of the Collegiate Gothic and his subtle incorporation of such characteristically medieval touches as the random-cut, ashlar-faced stone and the occasional asymmetry reveal a familiarity with this aesthetic that is confident and erudite. As such, the Raymond Munger Memorial Chapel remains the best example on the University of the Ozarks campus -- and in all of Clarksville -- of a building designed in the Collegiate Gothic style; for these reasons it is eligible under Criterion C with local significance.



## 9. Major Bibliographical References

X See continuation sheet.

Previous documentation on file (NPS):

- preliminary determination of individual listing (36 CFR 67) has been requested.
- previously listed in the National Register
- previously determined eligible by the National Register
- designated a National Historic Landmark
- recorded by Historic American Buildings Survey #
- recorded by Historic American Engineering Record #

Primary Location of Additional Data:

- X State historic preservation office
- Other state agency
- Federal agency
- Local government
- University
- Other -- Specify Repository:

## 10. Geographical Data

Acreage of Property: Less than one

UTM References: Zone Easting Northing      Zone Easting Northing

A	<u>15</u>	<u>457580</u>	<u>3925870</u>	B	<u>      </u>	<u>      </u>	<u>      </u>
C	<u>      </u>	<u>      </u>	<u>      </u>	D	<u>      </u>	<u>      </u>	<u>      </u>

       See continuation sheet.

Verbal Boundary Description:        See continuation sheet.

Lot 1, Block 7, College Addition to the City of Clarksville.

Boundary Justification:        See continuation sheet.

This boundary includes all of the surrounding property historically associated with this resource that retains its integrity.

## 11. Form Prepared By

Name/Title: Kenneth Story, Architectural Historian

Organization: Arkansas Historic Preservation Program Date: April 7, 1993

Street & Number: 323 Center Street, Suite 1500 Telephone: (501) 324-9880

City or Town: Little Rock State: AR ZIP: 72201

United States Department of the Interior  
National Park Service

**National Register of Historic Places  
Continuation Sheet**

Section number   9   Page   1  

---

**Bibliography**

Benton County Heritage Committee, *History of Benton County, Arkansas*, (Rogers, Arkansas; 1991).

Henry, George M., "History of A College," *Arkansas Gazette*, Sunday Magazine Section, May 19, 1940, p. 3.

Information provided by Lynda Stephenson, Clarksville, Arkansas; October, 1992.

UNITED STATES DEPARTMENT OF THE INTERIOR  
NATIONAL PARK SERVICE

NATIONAL REGISTER OF HISTORIC PLACES  
EVALUATION/RETURN SHEET

REQUESTED ACTION: NOMINATION

PROPERTY NAME: Munger, Raymond, Memorial Chapel--University of the Ozarks

MULTIPLE  
NAME:

STATE & COUNTY: ARKANSAS, Johnson

DATE RECEIVED: 5/04/93 DATE OF PENDING LIST: 5/18/93  
DATE OF 16TH DAY: 6/03/93 DATE OF 45TH DAY: 6/18/93  
DATE OF WEEKLY LIST:

REFERENCE NUMBER: 93000489

NOMINATOR: STATE

REASONS FOR REVIEW:

APPEAL: N DATA PROBLEM: N LANDSCAPE: N LESS THAN 50 YEARS: N  
OTHER: N PDIL: N PERIOD: N PROGRAM UNAPPROVED: N  
REQUEST: N SAMPLE: N SLR DRAFT: N NATIONAL: N

COMMENT WAIVER: N

☒ ACCEPT ☐ RETURN ☐ REJECT 6/8/93 DATE

Entered in the  
National Register

ABSTRACT/SUMMARY COMMENTS:

RECOM./CRITERIA \_\_\_\_\_  
REVIEWER \_\_\_\_\_  
DISCIPLINE \_\_\_\_\_  
DATE \_\_\_\_\_

DOCUMENTATION see attached comments Y/N see attached SLR Y/N

UNITED STATES DEPARTMENT OF THE INTERIOR  
NATIONAL PARK SERVICE

NATIONAL REGISTER OF HISTORIC PLACES  
EVALUATION/RETURN SHEET

REQUESTED ACTION: NOMINATION

PROPERTY NAME: Munger, Raymond, Memorial Chapel--University of the Ozarks

MULTIPLE  
NAME:

STATE & COUNTY: ARKANSAS, Johnson

DATE RECEIVED: 5/04/93 DATE OF PENDING LIST: 5/18/93  
DATE OF 16TH DAY: 6/03/93 DATE OF 45TH DAY: 6/18/93  
DATE OF WEEKLY LIST:

REFERENCE NUMBER: 93000489

NOMINATOR: STATE

REASONS FOR REVIEW:

APPEAL: N DATA PROBLEM: N LANDSCAPE: N LESS THAN 50 YEARS: N  
OTHER: N PDIL: N PERIOD: N PROGRAM UNAPPROVED: N  
REQUEST: N SAMPLE: N SLR DRAFT: N NATIONAL: N

COMMENT WAIVER: N

☒ ACCEPT ☐ RETURN ☐ REJECT 6/8/93 DATE

Entered in the  
National Register

ABSTRACT/SUMMARY COMMENTS:

RECOM./CRITERIA \_\_\_\_\_  
REVIEWER \_\_\_\_\_  
DISCIPLINE \_\_\_\_\_  
DATE \_\_\_\_\_

DOCUMENTATION see attached comments Y/N see attached SLR Y/N

---

CLASSIFICATION

\_\_\_count      \_\_\_resource type

---

STATE/FEDERAL AGENCY CERTIFICATION

---

FUNCTION

\_\_\_historic      \_\_\_current

---

DESCRIPTION

\_\_\_architectural classification  
\_\_\_materials  
\_\_\_descriptive text

---

SIGNIFICANCE

Period      Areas of Significance--Check and justify below

Specific dates      Builder/Architect  
Statement of Significance (in one paragraph)

\_\_\_summary paragraph  
\_\_\_completeness  
\_\_\_clarity  
\_\_\_applicable criteria  
\_\_\_justification of areas checked  
\_\_\_relating significance to the resource  
\_\_\_context  
\_\_\_relationship of integrity to significance  
\_\_\_justification of exception  
\_\_\_other

---

BIBLIOGRAPHY

---

GEOGRAPHICAL DATA

\_\_\_acreage      \_\_\_verbal boundary description  
\_\_\_UTMs      \_\_\_boundary justification

---

ACCOMPANYING DOCUMENTATION/PRESENTATION

\_\_\_sketch maps      \_\_\_USGS maps      \_\_\_photographs      \_\_\_presentation

---

OTHER COMMENTS

Questions concerning this nomination may be directed to

\_\_\_\_\_ Phone \_\_\_\_\_

Signed \_\_\_\_\_ Date \_\_\_\_\_





RAYMOND MUNGER MEMORIAL CHAPEL; UNIV. OF THE OZARKS  
CLARKSVILLE, JOHNSON CO., ARKANSAS  
PHOTOGRAPHED BY P. ZOLLNER  
SEPTEMBER, 1992  
NEGATIVE ON FILE AT AHPP  
VIEW FROM SOUTHWEST





RAYMOND MUNGER MEMORIAL CHAPEL; UNIV. OF THE OZARKS  
CLARKSVILLE, JOHNSON CO., ARKANSAS  
PHOTOGRAPHED BY P. ZOLLNER  
SEPTEMBER, 1992  
NEGATIVE ON FILE AT AHPP  
VIEW FROM WEST





RAYMOND MUNGER MEMORIAL CHAPEL; UNIV. OF THE OZARKS  
CLARKSVILLE, JOHNSON Co., ARKANSAS

PHOTOGRAPHED BY P. ZOLLNER

SEPTEMBER, 1992

NEGATIVE ON FILE AT AHPP

VIEW FROM NORTH





RAYMOND MUNGER MEMORIAL CHAPEL; UNIV. OF THE OZARKS  
CLARKSVILLE, JOHNSON Co., ARKANSAS  
PHOTOGRAPHED BY P. ZOLLNER  
SEPTEMBER, 1992  
NEGATIVE ON FILE AT AHPP  
VIEW FROM EAST







RAYMOND MUNGER MEMORIAL CHAPEL; UNIV. OF THE OZARKS  
CLARKSVILLE, JOHNSON Co., ARKANSAS  
PHOTOGRAPHED BY P. ZOLLNER  
SEPTEMBER, 1992  
NEGATIVE ON FILE AT AHPP  
VIEW FROM NORTHEAST



RAYMOND MUNGER MEMORIAL CHAPEL; UNIV. OF THE OZARKS  
CLARKSVILLE, JOHNSON Co., ARKANSAS  
PHOTOGRAPHED BY P. ZOLLNER

SEPTEMBER, 1992

NEGATIVE ON FILE AT AHPP

DETAIL OF ORIGINAL LIGHTING FIXTURE





RAYMOND MUNGER, MEMORIAL CHAPEL, UNIV. OF THE OZARKS  
CLARKSVILLE, JOHNSON Co., ARKANSAS  
PHOTOGRAPHED BY P. ZOLLNER  
SEPTEMBER, 1992  
NEGATIVE ON FILE AT AHPP  
DETAIL OF CHANCEL WINDOWS





RAYMOND MUNGER MEMORIAL CHAPEL; UNIV. OF THE OZARKS  
CLARKSVILLE, JOHNSON Co., ARKANSAS

PHOTOGRAPHED BY P. ZOLLNER  
SEPTEMBER, 1992

NEGATIVE ON FILE AT AHPP  
INTERIOR VIEW, TOWARD WEST



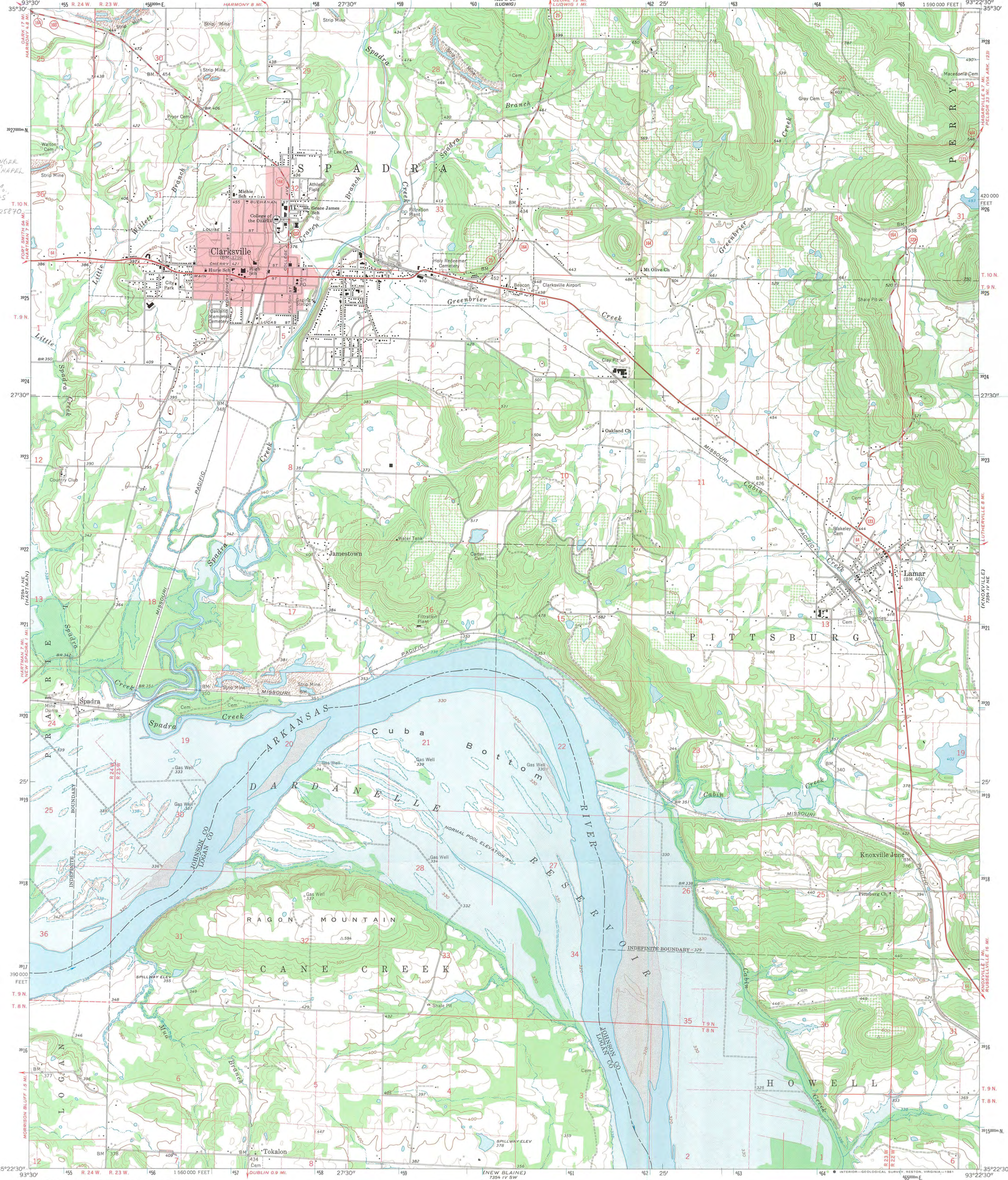


RAYMOND MUNGER MEMORIAL CHAPEL; UNIV. OF THE OZARKS  
CLARKSVILLE, JOHNSON CO., ARKANSAS  
PHOTOGRAPHED BY P. ZOLLNER  
SEPTEMBER, 1992

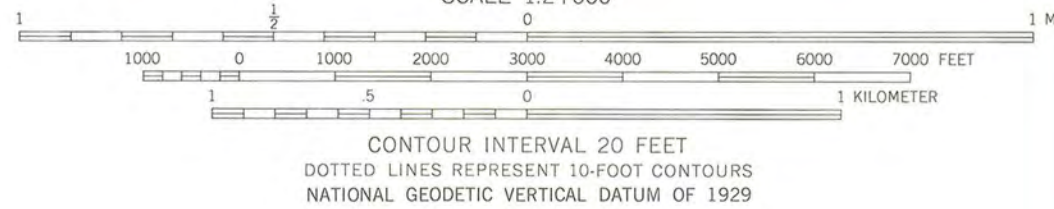
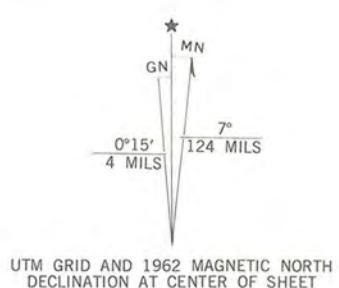
NEGATIVE ON FILE AT AHPP  
INTERIOR VIEW, LOOKING EAST



RAYMOND MUNGER  
MEMORIAL CHAPEL  
CLARKSVILLE,  
JOHNSON CO.,  
ARKANSAS  
15/457580/3925870



Mapped, edited, and published by the Geological Survey  
Control by USGS, USC&GS, and USCE  
Topography by photogrammetric methods from aerial  
photographs taken 1958. Field checked 1962  
Polyconic projection. 1927 North American datum  
10,000-foot grid based on Arkansas coordinate system, north zone  
1000-meter Universal Transverse Mercator grid ticks,  
zone 15, shown in blue  
Red tint indicates area in which only landmark buildings are shown  
Blue hatching indicates area to be submerged by Dardanelle  
Reservoir at elevation 338  
To place on the predicted North American Datum 1983  
move the projection lines 6 meters south and  
16 meters east as shown by dashed corner ticks



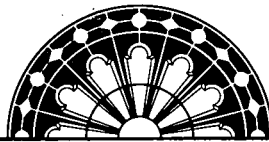
ROAD CLASSIFICATION

Heavy-duty	Light-duty
Medium-duty	Unimproved dirt
U. S. Route	State Route

CLARKSVILLE, ARK.  
N 3522.5 - W 9322.5 / 7.5

1962  
AMS 7354 IV NW—SERIES V884





RECEIVED 413

ARKANSAS  
HISTORIC  
PRESERVATION  
PROGRAM

MAY 04 1993

April 13, 1993

Carol D. Shull  
Chief of Registration  
United States Department of the Interior  
National Register of Historic Places  
National Park Service  
800 North Capitol Street, Suite 250  
Washington, DC 20002

RE: Raymond Munger Memorial Chapel; University of the Ozarks  
Clarksville, Johnson County

Dear Carol:

We are enclosing for your review the nomination of the above referenced property. The Arkansas Historic Preservation Program has complied with all applicable nominating procedures and notification requirements in the nomination process.

Thank you for your consideration in this matter.

Sincerely,

Cathy Buford Slater  
State Historic Preservation Officer

CB:kg

Enclosures

