



EVERETT
NEUROLOGICAL
CENTER

2120

Hartley Mansion
Everett, Washington
Brent Lambert, 1985
Snohomish County Planning Dept

o East elevation (facade);
view to S. W. #1. of 8



Hartley Mansion
Everett, Washington
Brent Lambert, 1985
Snohomish County Planning Dept

o Detail of porte-cochere;
view to S.W. #2. of 8



Hartley Mansion
Everett, Washington
Brent Lambert, 1985
Snohomish County Planning Dept

o Porch, lattice, screen &
fluestration of north
elevation, ground floor;
view to E. #3. of 8



COMMERCIAL & RESIDENTIAL LANDSCAPE MAINTENANCE

858-5498

E

1658

FORD

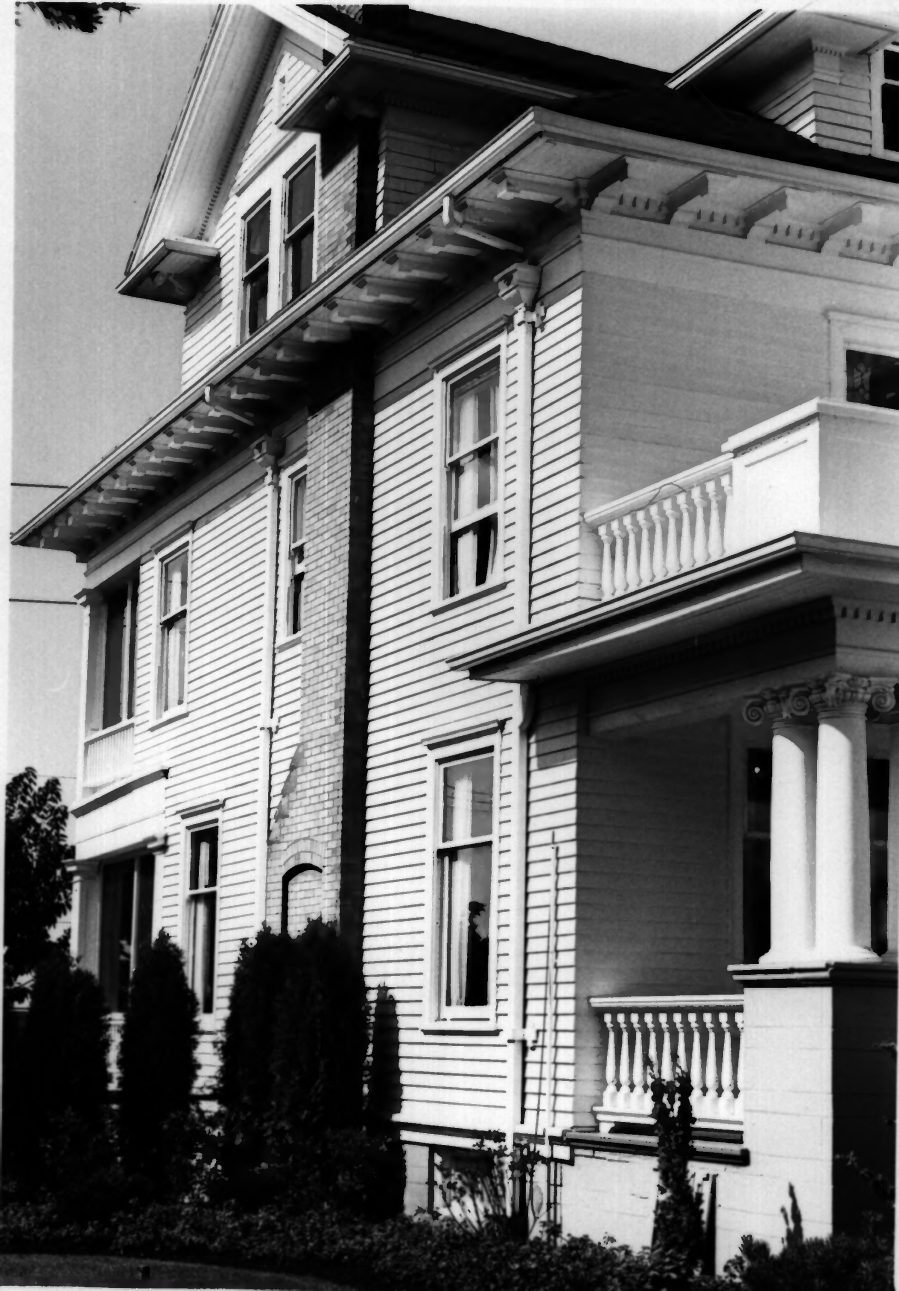
Hartley Mansion
Everett, Washington
Brent Lambert, 1985
Snohomish County Planning Dept

- o North portion of west
elevation showing
restoration & central
bay element; view to N.E.
#4. 8



Hartley Mansion
Everett, Washington
Brent Lambert, 1985
Snohomish County Planning Dept

- o South portion of west elevation showing details of glassed-in porches on first and second floors; view to E. #5. of 8



Hartley Mansion
Everett, Washington
Brent Lambert, 1985
Snohomish County Planning Dept.

o South elevation; view
to N.W. #6. of 8



Hartley Mansion
: Everett, Washington
Brent Lambert, 1985
Snohomish County Planning Dept

o East elevation (facade);
view to N.W. #7. of 8



Hartley Mansion
Everett, Washington
Brent Lambert, 1985
Snohomish County Planning Dept

- o West and south elevations
of garage; view to N. #8.
of 8