



FEEDER DAM BRIDGE, CLAY COUNTY, INDIANA

JOHN WARNER

22 MAR 1999

402 W. WASHINGTON ST, INDIANAPOLIS, IN

EAST PORTAL - LOOKING WEST.

1



FEEDER DAM BRIDGE, CLAY COUNTY, INDIANA

JOHN WARNER

22 MAR 1999

402 W. WASHINGTON STREET, INDIANAPOLIS, IN

SOUTH SIDE (DOWNSTREAM) LOOKING WEST-NORTHWEST

#2



FEEDER DAM BRIDGE, CLAY COUNTY, INDIANA

JOHN WARNER

22 MARCH 1999

402 W. WASHINGTON STREET, INDIANAPOLIS, IN

EAST ABUTMENT - DOWNSTREAM SIDE

#₃



FEEDER DAM BRIDGE, CLAY COUNTY, INDIANA

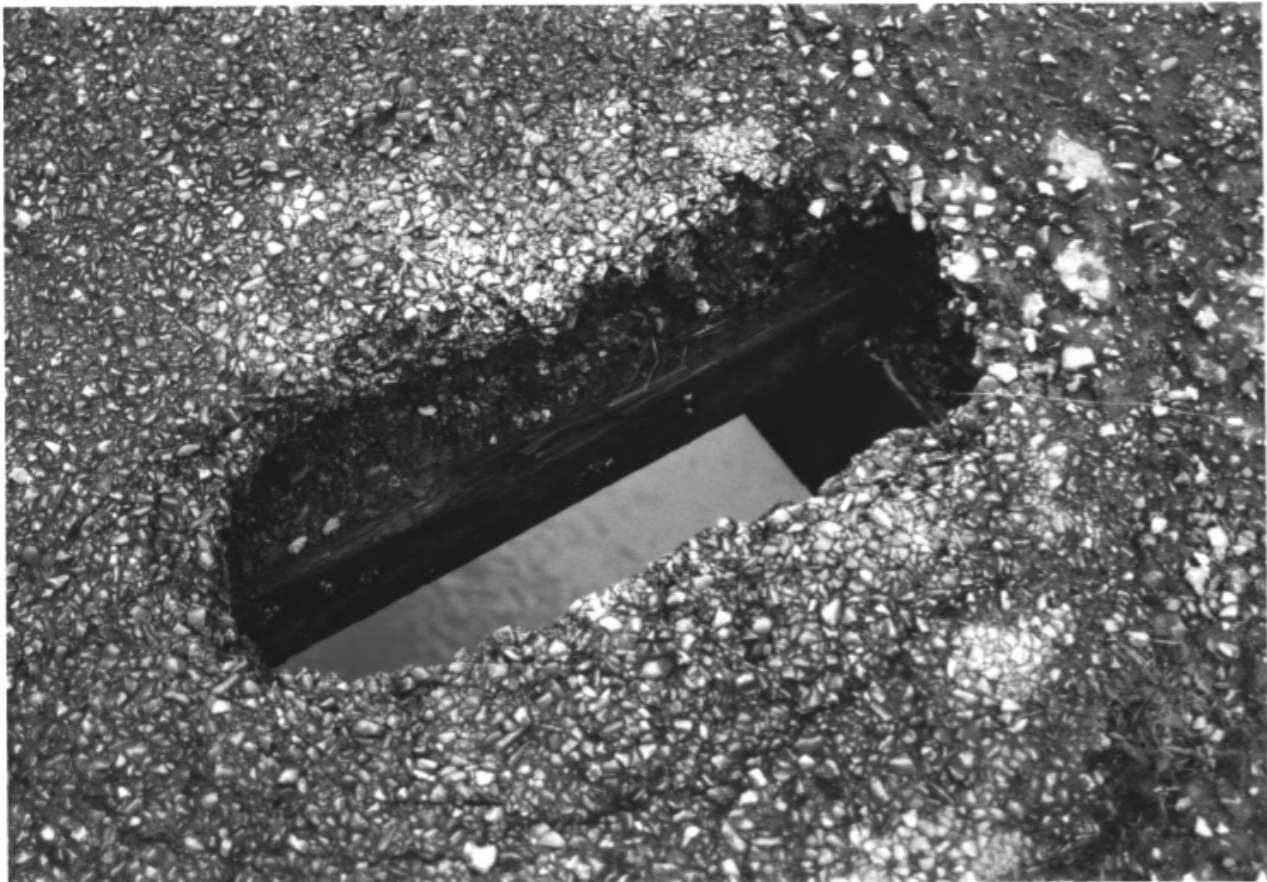
JOHN WARNER

22 MARCH 1999

402, W. WASHINGTON STREET, INDIANAPOLIS, IN

NORTHEAST CORNER - ROLLER BEARING NEST & CONNECTING PIN

#4



FEEDER DAM BRIDGE - CLAY COUNTY, INDIANA

JOHN WARNER

22 MARCH 1999

402 W. WASHINGTON STREET, INDIANAPOLIS, IN

ASPHALT COVERING OVER WOOD BRIDGE DECK

#5



FEEDER DAM BRIDGE, CLAY COUNTY, INDIANA

JOHN WARNER

22 MARCH 1999

402 W. WASHINGTON STREET, INDIANAPOLIS, IN

I BEAM - PIN - VERTICAL - U-BOLT - LOWER CHORD CLUSTER

6