

1227

United States Department of the Interior
National Park Service

National Register of Historic Places Registration Form

This form is for use in nominating or requesting determinations for individual properties and districts. See instructions in National Register Bulletin, *How to Complete the National Register of Historic Places Registration Form*. If any item does not apply to the property being documented, enter "N/A" for "not applicable." For functions, architectural classification, materials, and areas of significance, enter only categories and subcategories from the instructions. Place additional certification comments, entries, and narrative items on continuation sheets if needed (NPS Form 10-900a).

1. Name of Property

historic name New Deal Resources in Watoga State Park Historic District

other names/site number _____

2. Location

street & number HC 82 (9 miles southwest of West Virginia Highway 39)

☐ not for publication

city or town Marlinton

☒ vicinity

state West Virginia code WV county Pocahontas code 075 zip code 24954

3. State/Federal Agency Certification

As the designated authority under the National Historic Preservation Act, as amended, I hereby certify that this X nomination request for determination of eligibility meets the documentation standards for registering properties in the National Register of Historic Places and meets the procedural and professional requirements set forth in 36 CFR Part 60. In my opinion, the property X meets does not meet the National Register Criteria. I recommend that this property be considered significant at the following level(s) of significance: national X statewide local

Signature of certifying official/Title

Date

State or Federal agency/bureau or Tribal Government

In my opinion, the property meets does not meet the National Register criteria.

Signature of commenting official

Date

Title

State or Federal agency/bureau or Tribal Government

4. National Park Service Certification

I hereby certify that this property is:

entered in the National Register

determined eligible for the National Register

determined not eligible for the National Register

removed from the National Register

other (explain):

Signature of the Keeper

Date of Action

New Deal Resources in Watoga State Park
Name of Property

Pocahontas County, WV
County and State

5. Classification

Ownership of Property

(Check as many boxes as apply.)

☐ Private
☐ public – Local
☒ public – State
☐ public - Federal

Category of Property

(Check only one box.)

☐ building(s)
☒ district
☐ site
☐ structure
☐ object

Number of Resources within Property

(Do not include previously listed resources in the count.)

Contributing	Noncontributing	
59	3	buildings
0	0	district
2	3	site
35	8	structure
11	0	object
107	14	Total

Name of related multiple property listing

(Enter "N/A" if property is not part of a multiple property listing)

Number of contributing resources previously listed in the National Register

New Deal Resources in West Virginia State Parks
and Forests

N/A

6. Function or Use

Historic Functions

(Enter categories from instructions.)

RECREATION AND CULTURE/ Outdoor

Recreation

LANDSCAPE/ Park

Current Functions

(Enter categories from instructions.)

RECREATION AND CULTURE/ Outdoor

Recreation

LANDSCAPE/ Park

7. Description

Architectural Classification

(Enter categories from instructions.)

OTHER/ Rustic

Materials

(Enter categories from instructions.)

foundation: STONE/

walls: STONE/

WOOD/Log

roof: ASPHALT/ Asphalt Shingle

other:

New Deal Resources in Watoga State Park
Name of Property

Pocahontas County, WV
County and State

Narrative Description

(Describe the historic and current physical appearance of the property. Explain contributing and noncontributing resources if necessary. Begin with a **summary paragraph** that briefly describes the general characteristics of the property, such as its location, setting, size, and significant features.)

Summary Paragraph

Watoga State Park is located in southeastern Pocahontas County, east of the Greenbrier River and east of the communities of Seebert and Hillsboro. The park encompasses approximately 10,269 mountainous acres, and is the largest of West Virginia's state parks. It also contains an 11-acre lake, Watoga Lake, which attracts many day-use fishermen. The park's terrain is generally rugged, with the highest elevation at 3,211 feet and the lowest at 2,000 feet. On the eastern boundary of the park, Pocahontas County Route 21 enters the park at the North entrance. On the west side of the park, Pocahontas County Route 27-3 enters the park at the River Entrance just east of the Greenbrier River. It continues east to function as the main park road and runs through the northern third of the park to connect to County Route 21. Most of the park's development is concentrated along this road, along with Fire Road 819. A section of the Allegheny Trail is also within the park and joins with a section of the trail in Seneca State Forest. The landscape and woodlands within the park were subjected to planning and design by the National Park Service (NPS) and Civilian Conservation Corps (CCC).

In addition to New Deal-era architectural resources, later development in the park includes the Beaver Creek Campground, the Riverside Campground, the pool bath house, the lake boat house, the activities/recreation building, ten newer rental cabins, and campground bathhouses. The entrance and directional signs replaced the original signage. A total of 103 contributing and 9 non-contributing resources have been identified. They include water fountains; trails; a swimming pool; a reservoir; rental cabins; and picnic shelters; as well as a former CCC camp. Finally, the park is the site of the Fred E. Brooks Memorial Arboretum, a 400-acre arboretum that encompasses the drainage of Two Mile Run. Named in honor of Fred E. Brooks, a noted West Virginia naturalist who died in 1933, the Arboretum's construction began ca. 1935 and a dedication was held in 1938. All of these are described in greater detail below.

Narrative Description

Watoga State Park occupies a heavily forested, rugged tract in eastern West Virginia. The Greenbrier River runs along the park's western boundary. Within the park, narrow, winding roads hug the terrain. The park offers a variety of amenities to visitors, including walking trails, a swimming pool, picnic areas, and furnished rental cabins. The arboretum includes a walking trail and some educational signage about West Virginia's native plant species. A former CCC camp is on the park's east side and retains five camp buildings. Living quarters for the park superintendent and assistant superintendent are within the park's boundaries, as are various maintenance and storage buildings and an administrative office. Architectural resources and landscape design within the park are naturalistic and rustic, making them blend into their surroundings. Of the historic district's 121 architectural resources, 107 are contributing to the historic district and 14 are non-contributing. The non-contributing resources include historic resources, such as culverts and vehicular bridges, that have been extensively altered over time, as well as newer resources, such as the bathhouse and manmade lake, that were built outside the historic district's period of significance.

(see continuation sheet)

**United States Department of the Interior
National Park Service****National Register of Historic Places
Continuation Sheet**Section number 7 Page 1New Deal Resources in Watoga State Park
Historic DistrictName of Property
Pocahontas County, West VirginiaCounty and State
New Deal Resources in West Virginia State
Parks and Forests

Name of multiple listing (if applicable)

Narrative Description (continued)*Resource No. 1**Resource Type:* Designed and managed landscape*Resource Name:* Watoga State Park*Construction Date:* ca. 1933-1942*Status:* Contributing site*Count:* 1

Watoga State Park retains its overall, original New Deal-era landscape design (Figure 4; Photos 1-10). The park's 10,269 acres are primarily covered with forests of native hard- and softwood trees, both deciduous and coniferous. Since the 1930s, the forest has been managed according to standard forestry practices as they evolved across the twentieth century. Watoga retains landscape elements, such as roads and trails, that demonstrate the naturalistic design principles utilized by the CCC during the New Deal period (Photos 1-3). The roads and trails follow the existing topography and are designed to incorporate scenic elements and natural features (Photo 4). Manmade resources, such as footbridges, are designed to increase public access to natural sites while blending into the overall scenery (Photo 5).

Landscaping design features, such as stonework, are constructed of native stone to blend into their surroundings in keeping with the rustic and naturalistic design tenets used by the CCC (Photo 7). Architectural resources, such as cabins, have been carefully sited and were constructed utilizing native materials, all with the intent of harmonizing with the natural setting (Photos 8-10). The West Virginia Division of Natural Resources continues to manage the forest according to today's commonly accepted forestry practices. Since the 1930s, the park's staff has maintained the New Deal-era resources in a manner that is sympathetic to the character-defining naturalistic and rustic design tenets used by the CCC during the park's original development.

*Resource No. 2, 3**Resource Type:* Engineering resource*Resource Name:* Roads*Construction Date:* ca. 1935*Status:* Contributing structures*Count:* 2

CCC workers built approximately 15 miles of roads within the park itself (Photos 11-14). The enrollees used a steam shovel to grade the roads, which originally were dirt-surfaced. Starting in the mid-1950s, the roads were paved and have since been kept covered with asphalt. Although the surface has been changed, the road alignments and overall configurations remained unchanged. Contributing roads within the park are County Route 27-3 and Fire Road 819, as well as the spurs from these roads to cabin and camping areas.

*Resource No. 4, 5**Resource Type:* Engineering resource*Resource Name:* Culverts

United States Department of the Interior
National Park Service

National Register of Historic Places
Continuation Sheet

Section number 7 Page 2

New Deal Resources in Watoga State Park
 Historic District

Name of Property
 Pocahontas County, West Virginia

County and State
 New Deal Resources in West Virginia State
 Parks and Forests

Name of multiple listing (if applicable)

Construction Date: ca. 1935

Status: Non-contributing structures

Count: 2

Culvert heads are located along the park roads. Due to frequent flooding and routine road maintenance, few New Deal-era culverts are extant. Two historic-age culverts that appear to maintain their original configuration are extant in the vicinity of cabins 17 and 22, but each has been rebuilt (Photo 15).

Resource No. 6, 7, 8, 9, 10

Resource Type: Engineering resource

Resource Name: Vehicular bridges and abutments

Construction Date: ca. 1935; ca. 1945; ca. 1995

Status: Non-contributing structures

Count: 5

There are five car bridges along the main road through the park (Photos 16-17). The stone abutments and piers may be original to the New Deal era but due to frequent flooding, they may have been constructed or reconstructed at later times. On each bridge, the railings, siding, and decks are replacement materials. One bridge is located directly south of the office/restaurant building; one is at Cabin No. 3; and three are west of the Brooks Arboretum along the main park road going toward Seebert.

Resource No. 11, 12, 13, 14, 15, 16

Resource Type: Engineering resource

Resource Name: Stonework

Construction Date: ca. 1933

Status: Contributing structures

Count: 6

Watoga State Park has some examples of CCC-built stonework. The park office and headquarters building is fronted by a stone retaining wall flanked by two sets of curving stone steps. A pillar composed of stacked, cut stone is at the entry to the Brooks Arboretum, and has wooden signboards with directional information attached via horizontal wooden poles (Photo 18). A set of steps is within the Brooks Arboretum (Photo 19) and another set of stone steps and retaining walls are at the tennis courts. A stone retaining wall is along Island Lick Run from about the Island Lick Run Cabin area to the River Cabin area (Photos 20-21). The stone retaining walls along Island Lick Run have been reconstructed in places, and some areas have been patched and reinforced with concrete. In the Pine Run Cabin Area, a stone retaining wall is adjacent to Cabin no. 34 (Photo 22).

Resource No. 17, 18, 19, 20, 21, 22, 23, 24, 25, 26, 27, 28, 29, 30, 31, 32, 33, 34, 35

Resource Type: Recreational resource

Resource Name: Trails

Construction Date: ca. 1935

United States Department of the Interior
National Park Service

National Register of Historic Places
Continuation Sheet

Section number 7 Page 3

New Deal Resources in Watoga State Park
 Historic District

Name of Property

Pocahontas County, West Virginia

County and State

New Deal Resources in West Virginia State
 Parks and Forests

Name of multiple listing (if applicable)

Status: Contributing structures

Count: 19

Watoga State Park retains over 40 miles of hiking and horseback trails that were built by the CCC (Photos 23-26). As far as is known, no new trails have been built within the park since the New Deal era. The trails are a minimum of 4 feet wide. Several of the trails have been renamed over the years, including Jesse's Cove, Pine Run, and T.M. Cheek trails. The Allegheny Trail section in the park was formerly known as the Jacob's Well Trail. The current trails within the park are Jesse's Cove Trail, Arrowhead Trail, Ann Bailey Trail, Burnside Ridge Trail, South Burnside Trail, Kennison Run Trail, Honey Bee Trail, Dragon Draft Trail, Buckthorn Trail, Monongaseneka Trail, North Boundary Trail, Bear Pen Trail, Buck and Doe Trail, Allegheny Trail, Ten Acre Trail, Honeymoon Trail, Pine Run Trail, Lake Trail, and T. M Cheek Trail.

Finally, a portion of the Greenbrier River Trail, established during the 1990s, runs alongside the west side of the river, just beyond the Watoga State Park boundary.

Resource No. 36, 37, 38, 39, 40, 41, 42

Resource Type: Fire prevention and protection resource

Resource Name: Fire hose cabinets

Construction Date: ca. 1935

Status: Contributing objects

Count: 7

The fire hose cabinets are small, wooded cabinets elevated on posts (Photo 27). They house water hoses used for firefighting purposes. Each has a small, gabled roof and a latched door for access to the fire hose, and is painted red with "FIRE HOSE" painted in yellow on the front. There are seven (7) of them in the park: one at the office building; one at the swimming pool; one at the CCC Museum location; two in the maintenance area; one at the Superintendent's Residence; and one at the large Supply House by the Superintendent's Residence.

Resource No. 43, 44, 45, 46

Resource Type: Mechanical resource

Resource Name: Water fountains

Construction Date: ca. 1935

Status: Contributing objects

Count: 4

The water fountains in the park are built of stacked stone (Photo 28). Each is accessed by stacked stone steps or a stone or concrete base. Each fountain stands approximately 34 inches tall and 24 inches wide. There are four water fountains located throughout the park: one at the entrance to the Riverside campground; one at the tennis courts by the CCC Museum; and two at the picnic shelter area.

**United States Department of the Interior
National Park Service**

**National Register of Historic Places
Continuation Sheet**

Section number 7 Page 4

New Deal Resources in Watoga State Park
Historic District

Name of Property

Pocahontas County, West Virginia

County and State

New Deal Resources in West Virginia State
Parks and Forests

Name of multiple listing (if applicable)

Resource No. 47, 48, 49, 50, 51, 52

Resource Type: Engineering resource

Resource Name: Foot bridge abutments

Construction Date: ca. 1934

Status: Contributing structures

Count: 6

There are six footbridge stone abutments that appear to date from the New Deal era (Photos 29-30). On all the footbridges, the siding, decks, and rails are replacement materials. In some cases, the stone abutments have been reconstructed or reinforced, but retain their original materials and configurations. The abutments are located as follows: one at the head of Bear Pen Trail; one in front of Cabin No. 25; one in front of Cabin No. 14; one in front of Cabin No. 10; one in front of Cabin No. 6; and one at the head of the Dragon Draft Trail in the Brooks Memorial Arboretum.

STABLE PICNIC AREA

Resource No. 53

Resource Type: Recreational resource

Resource Name: Stable area picnic shelter

Construction Date: ca. 1934

Status: Contributing building

Count: 1

This 3-by-3 bay, one-story, side-gabled picnic shelter measures approximately 39 feet by 20 feet (Photo 28). Built on a solid stone foundation/deck, the walls are composed of square logs with cement chinking; V notches are at the corner joints. The upper portions of the walls are clad with vertical board siding just beneath the gabled roof peaks. The window openings are covered with wooden shutters. Asphalt shingles cover the roof. A massive exterior, cut stone chimney is centered on one gabled end wall. The interior fireplace has a wooden mantle and stone surround.

Resource No. 54

Resource Type: Mechanical resource

Resource Name: ADA restroom/Comfort station

Construction Date: ca. 1934

Status: Contributing building

Count: 1

This is a 3-by-1 bay building that measures approximately 24 feet, 3 inches by 10 feet, 1 inch. Built on a stone foundation, the one-story, side-gabled building functions as a restroom. The walls are clad with fletch chestnut siding. The windows have fixed, 3-pane vertical sash. Asphalt shingles cover the roof. A wheelchair-accessible ramp and deck have been added to the exterior to make the building compliant with the Americans with Disabilities Act.

United States Department of the Interior
National Park Service

National Register of Historic Places
Continuation Sheet

Section number 7 Page 5

New Deal Resources in Watoga State Park
 Historic District

Name of Property

Pocahontas County, West Virginia

County and State

New Deal Resources in West Virginia State
 Parks and Forests

Name of multiple listing (if applicable)

Resource No. 55

Resource Type: Mechanical resource

Resource Name: Stable area pump house/ Busch Place pump house

Construction Date: ca. 1934

Status: Contributing building

Count: 1

This is a 1-by-1 bay, one-story, front-gabled building that measures approximately 12 feet by 8 feet, 7 inches (Photo 31). It is partly built into an adjacent hillside. Constructed on a stone foundation, the lower portions of the walls are composed of cut stone. The upper portions of the walls are covered with board-and-batten siding. Asphalt shingles cover the roof.

PINE RUN CABIN AREA

Resource No. 56

Resource Type: Mechanical resource

Resource Name: Pine Run Pump House

Construction Date: ca. 1934

Status: Contributing building

Count: 1

This is a one-story, side-gabled building with a cut stone foundation (Photo 32). The 2-by-1 bay building measures approximately 18 feet by 14 feet. The walls are composed of cut stone, with board-and-batten siding beneath the gabled roof peaks. The primary entry retains the original wooden door with original hardware. A window with a pair of 6-pane wooden sash is to the right of the entry. bestos shingles cover the roof. This building stands east of Cabin No. 29 on Pine Run.

Resource No. 57

Resource Type: Recreational resource

Resource Name: Cabin no. 21

Construction Date: ca. 1935

Status: Contributing building

Count: 1

This rustic-style cabin is a one-story, gable-roofed building with a cruciform plan (Photos 33-34). Built on a stone foundation, the 3-by-3 bay building measures approximately 39 feet by 19 feet, 3 inches. The walls are composed of round logs with corner saddle notches and cement chinking. Small sections of the walls are clad with horizontal boards in the gable ends beneath the roof peaks. On the primary façade, the projecting central bay has a centered, tripartite group of windows. The windows have 6-over-6 wooden sash. Immediately to the right, a porch spans the primary façade of the side-gabled wing. The porch has been partially enclosed with horizontal board siding. Sheltered by the porch, the primary entry door retains its original iron hardware. Asphalt shingles cover the roof and an interior stone chimney rises from the ridge line of the rear wing. The rear porch features a flagstone deck and its gabled roof is supported with round log columns. Stone steps and flagstone walkways lead to the cabin.

United States Department of the Interior
National Park Service

National Register of Historic Places
Continuation Sheet

Section number 7 Page 6

New Deal Resources in Watoga State Park
Historic District

Name of Property
Pocahontas County, West Virginia

County and State
New Deal Resources in West Virginia State
Parks and Forests

Name of multiple listing (if applicable)

This is one of twenty-four cabins that date to the New Deal era at Watoga State Park. The cabins retain original iron hinges and door latches, although modern lock sets have been added. Most of the original light fixtures have been replaced, but there are some New Deal era furnishings still extant in some of the cabins. When present, CCC-constructed wood sheds are listed with each cabin.

Resource No. 58, 59

Resource Type: Recreational resource

Resource Name: Cabin no. 22 and wood shed

Construction Date: ca. 1935

Status: Contributing buildings

Count: 2

This is a rustic-style, one-story, front-gabled cabin. Built on a cut stone foundation, the 2-by-2 bay building measures approximately 19 feet by 29 feet. The walls are clad with fletch chestnut siding. The windows have 6-pane wooden sash. The primary façade features a projecting, front-gabled entry porch with wooden shingles in the gable end, square wooden support columns, and a cut-out balustrade on the stone pier foundation. The entry door retains original iron hardware. The roof has exposed rafter tails and is covered with asphalt shingle. An exterior cut stone chimney is right-of-center on the side wall. On the rear, a gabled wing is covered with board-and-batten siding, with wooden shingles in the gable end. Nearby, there is a one-story, side-gabled wood shed. Built on a pier foundation, the 1-by-1 bay building has fletch chestnut siding and an asphalt-shingled roof.

Resource No. 60, 61

Resource Type: Recreational resource

Resource Name: Cabin no. 23 and wood shed

Construction Date: ca. 1935

Status: Contributing buildings

Count: 2

This is a one-story, rustic-style cabin with an L plan (Photo 35). The 3-by-3 bay building measures approximately 31 feet by 29 feet, 3 inches. Built on a solid, cut stone foundation, the walls are composed of round logs with corner saddle notches and cement chinking. Starting at the bottom, the corner logs project outward, with the lengths gradually shortening toward the top of the wall, creating a buttress effect. The side-gabled wing has a one-story, shed-roofed porch with round log columns on a cut stone deck spanning the primary façade. The windows have 6-pane wooden sash. A tripartite group of three sash is sheltered by the front porch. The remaining windows have paired sash. The entry doors retain original iron hardware. Asphalt shingles cover the roof. An exterior cut stone chimney is centered on the side-gabled wing's gable end wall. On the rear, there is a one-story, shed-roofed porch enclosed with board and batten siding. Nearby, there is a one-story, side-gabled wood shed (Photo 36). Built on a pier foundation, the 1-by-1 bay building has fletch chestnut siding and an asphalt-shingled roof.

United States Department of the Interior
National Park Service

National Register of Historic Places
Continuation Sheet

Section number 7 Page 7

New Deal Resources in Watoga State Park
Historic District

Name of Property
Pocahontas County, West Virginia

County and State
New Deal Resources in West Virginia State
Parks and Forests

Name of multiple listing (if applicable)

Resource No. 62, 63

Resource Type: Recreational resource

Resource Name: Cabin no. 24 and wood shed

Construction Date: ca. 1935

Status: Contributing buildings

Count: 2

This is a one-story, rustic-style cabin with an L plan. The 3-by-3 bay building measures approximately 29 feet by 22 feet. Built on a solid, cut stone foundation, the walls are composed of round logs with corner saddle notches and cement chinking. Starting at the bottom, the corner logs project outward, with the lengths gradually shortening toward the top of the wall, creating a buttress effect. The side-gabled wing has a one-story, shed-roofed porch with round log columns on a cut stone deck spanning the primary façade. The windows have 6-pane wooden sash. A tripartite group of three sash is sheltered by the front porch. The remaining windows have paired sash. The entry doors retain original iron hardware. Asphalt shingles cover the roof. An exterior cut stone chimney is centered on the side-gabled wing's gable end wall. Nearby, there is a one-story, side-gabled wood shed. Built on a pier foundation, the 1-by-1 bay building has fletcher chestnut siding and an asphalt-shingled roof.

Resource No. 64

Resource Type: Recreational resource

Resource Name: Cabin no. 25

Construction Date: ca. 1935

Status: Contributing building

Count: 1

This is a one-story, rustic-style cabin with an L plan. The 3-by-1 bay building measures approximately 32 feet by 28 feet. Built on a solid, cut stone foundation, the walls are composed of round logs with corner saddle notches and cement chinking. The side-gabled wing has a one-story, shed-roofed porch with round log columns and a round log railing on a cut stone deck spanning the primary façade. The windows have paired and single 6-pane wooden sash. The entry doors retain original iron hardware. Asphalt shingles cover the roof. An exterior cut stone chimney is centered on the side-gabled wing's gable end wall.

Resource No. 65, 66

Resource Type: Recreational resource

Resource Name: Cabin no. 26 and wood shed

Construction Date: ca. 1935

Status: Contributing buildings

Count: 2

This is a rustic-style, one-story, front-gabled cabin. Built on a stone foundation, the 2-by-2 bay building measures approximately 18 feet, 3 inches by 28 feet, 8 inches. The walls are composed of square logs

United States Department of the Interior
National Park Service

National Register of Historic Places
Continuation Sheet

Section number 7 Page 8

New Deal Resources in Watoga State Park
 Historic District

Name of Property
 Pocahontas County, West Virginia

County and State
 New Deal Resources in West Virginia State
 Parks and Forests

Name of multiple listing (if applicable)

with V corner notches and cement chinking. The windows have either 6-over-6 or 6-pane wooden sash. The primary façade features a small, hipped-roofed porch with square wooden support posts on a stone deck. Set within the entry porch is an exterior, cut stone and concrete block chimney. The entry door retains original iron hardware. The roof is covered with asphalt shingles. Nearby, there is a one-story, side-gabled wood shed. Built on a pier foundation, the 1-by-1 bay building has fletcher chestnut siding and an asphalt-shingled roof.

Resource No. 67

Resource Type: Recreational resource

Resource Name: Cabin no. 27

Construction Date: ca. 1935

Status: Contributing building

Count: 1

This is a rustic-style, one-story, front-gabled cabin. Built on a stone foundation, the 2-by-2 bay building measures approximately 20 feet by 19 feet, 3 inches. The walls are composed of square logs with V corner notches and cement chinking. The entry door retains original iron hardware. The windows have either 6-over-6 or 6-pane wooden sash. On the primary façade, the roofline projects to create a front porch. The roof is supported by corner knee braces. The porch features wooden support posts and a wooden railing, and is accessed via a short flight of stone steps. An exterior, cut stone chimney is centered on the cabin's south side wall. A small, shed-roofed wing is located at the northwest corner of the cabin. The roof is covered with asphalt shingles.

Resource No. 68, 69

Resource Type: Recreational resource

Resource Name: Cabin no. 29 and wood shed

Construction Date: ca. 1935

Status: Contributing buildings

Count: 2

This is a rustic-style, one-story, front-gabled cabin (Photo 37). Built on a cut stone foundation, the 2-by-2 bay building measures approximately 18 feet by 31 feet, 9 inches. The walls are covered with fletcher chestnut siding. The entry door retains original iron hardware. The windows have 6-pane wooden sash. Centered on the primary façade is a front-gabled porch with board-and-batten siding in gable end. The porch has square wood columns and a cut-out balustrade on a stone foundation. A partially engaged, cut stone chimney is on the side wall. On the rear wall is a gabled wing board-and-batten siding. The roof has exposed rafter tails and is covered with asphalt shingles. Nearby, there is a one-story, side-gabled wood shed. Built on a pier foundation, the 1-by-1 bay building has fletcher chestnut siding and an asphalt-shingled roof.

Resource No. 70, 71

United States Department of the Interior
National Park Service

National Register of Historic Places
Continuation Sheet

Section number 7 Page 9

New Deal Resources in Watoga State Park
 Historic District

Name of Property
 Pocahontas County, West Virginia

County and State
 New Deal Resources in West Virginia State
 Parks and Forests

Name of multiple listing (if applicable)

Resource Type: Recreational resource

Resource Name: Cabin no. 30 and wood shed

Construction Date: ca. 1935

Status: Contributing buildings

Count: 2

This is a rustic-style, one-story, front-gabled cabin. Built on a stone foundation, the 2-by-3 bay building measures approximately 21 feet by 29 feet. The walls are composed of round logs with saddle notches at the corners and cement chinking. The entry door retains original iron hardware. The windows have either 6-over-6 or 6-pane wooden sash. On the primary façade, the roofline projects to create a front porch. The roof is supported by round log columns on a flagstone deck over a stone foundation. An interior stone chimney rises from the center of the roof. The roof is covered with asphalt shingles. Nearby, there is a one-story, side-gabled wood shed. Built on a pier foundation, the 1-by-1 bay building has fletch chestnut siding and an asphalt-shingled roof.

Resource No. 72

Resource Type: Recreational resource

Resource Name: Cabin no. 31

Construction Date: ca. 1935

Status: Contributing building

Count: 1

This is a rustic-style, one-story, front-gabled cabin. Built on a stone foundation, the 2-by-1 bay building measures approximately 15 feet by 19 feet, 6 inches. The walls are composed of square logs with V notches at the corners and cement chinking. The entry door retains original iron hardware. The windows have 6-over-6 wooden sash. On the primary façade, the roofline projects to create a front porch. The roof is supported by square wooden posts on a flagstone deck over a stone foundation. An exterior stone chimney is centered on the side wall. The roof is covered with asphalt shingles.

Resource No. 73, 74

Resource Type: Recreational resource

Resource Name: Cabin no. 32 and wood shed

Construction Date: ca. 1935

Status: Contributing buildings

Count: 2

This is a rustic-style, one-story, front-gabled cabin (Photo 38). Built on a stone foundation, the 2-by-1 bay building measures approximately 15 feet by 19 feet. The walls are composed of saddle-notched round logs with chisel points at the corners and cement chinking. The entry door retains original iron hardware. The windows have either 6-over-6 or 6-pane wooden sash. On the primary façade, the roofline projects to create a front porch. The roof is supported by squared wooden posts on a flagstone deck over a stone foundation. A short flight of stone steps accesses the porch. An exterior stone chimney is left-of-center on the side wall. The roof is covered with asphalt shingles. Nearby, there is a one-story, side-

United States Department of the Interior
National Park Service

National Register of Historic Places
Continuation Sheet

Section number 7 Page 10

New Deal Resources in Watoga State Park
 Historic District

Name of Property
 Pocahontas County, West Virginia

County and State
 New Deal Resources in West Virginia State
 Parks and Forests

Name of multiple listing (if applicable)

gabled wood shed. Built on a pier foundation, the 1-by-1 bay building has fletch chestnut siding and an asphalt-shingled roof.

Resource No. 75, 76

Resource Type: Recreational resource

Resource Name: Cabin no. 34/Honeymooner's Cabin and wood shed

Construction Date: ca. 1935

Status: Contributing buildings

Count: 2

This is a rustic-style, one-story, front-gabled cabin. Built on a stone foundation, the 2-by-2 bay building measures approximately 18 feet by 22 feet, 6 inches. The walls are square cut logs with V corner notches and cement chinking. Horizontal board siding covers a small portion of the walls beneath the roof gable peaks. The entry door retains original iron hardware. The windows have either 6-over-6 or 6-pane wooden sash. On the primary façade, there is a small, shed-roofed entrance porch with square corner posts and wood railings on a flagstone deck over a stone foundation. A short flight of stone steps accesses the porch. An exterior stone chimney is set within the front porch. The roof is covered with asphalt shingles. There also are a set of stone steps and a stone retaining wall in the parking area for this cabin. Nearby, there is a one-story, side-gabled wood shed. Built on a pier foundation, the 1-by-1 bay building has fletch chestnut siding and an asphalt-shingled roof.

Resource No. 77

Resource Type: Administrative building

Resource Name: Supply house

Construction Date: ca. 1935

Status: Contributing building

Count: 1

The supply house is a tall one-story, front-gabled building with a gabled wing on the rear (Photo 39). Built on a stone pier foundation, the 1-by-1 bay building measures approximately 16 feet, 3 inches by 21 feet, 2 inches. The walls are clad with fletch chestnut board siding. Asphalt shingles cover the roof, which is highlighted by a louvered cupola. On the primary façade, the roof extends to form a forebay supported by large knee braces at each corner. Sheltered by the forebay, the centered entry features a pair of herringbone doors with original iron strapwork, and is accessed via a short flight of wooden steps. The building has no windows. Among the items stored here are several of the wood stoves used by the CCC camps in their barracks.

SWIMMING POOL AND WATOOGA LAKE AREA

Resource No. 78, 79

Resource Type: Recreational resource

Resource Name: Swimming pool

United States Department of the Interior
National Park Service

National Register of Historic Places
Continuation Sheet

Section number 7 Page 11

New Deal Resources in Watoga State Park
 Historic District

Name of Property
 Pocahontas County, West Virginia

County and State
 New Deal Resources in West Virginia State
 Parks and Forests

Name of multiple listing (if applicable)

Construction Date: ca. 1939/1940

Status: Contributing structure; non-contributing building

Count: 1 contributing; 1 non-contributing

The swimming pool area measures approximately 150 feet by 8 feet, 1 inch (Photo 40). It includes a full-size pool and a children's pool, both of which are surrounded by concrete aprons. The entire area is enclosed by a stone fence with a stone perpendicular-style parapet. Originally, there were board rails between the stone parapets, but a solid wood rail now extends between them.

The bathhouse at the pool area was built in 1948, as were the stone "loggia", flagstone sidewalk, and stone-outlined parking lot (Photo 41).

Resource No. 80

Resource Type: Mechanical resource

Resource Name: CCC Museum/restrooms

Construction Date: ca. 1939

Status: Contributing building

Count: 1

This is a one-story, side-gabled building on a concrete block foundation (Photo 42). The 3-by-1 bay building measures approximately 31 feet, 8 inches by 13 feet, 21 inches. A front-gabled, projecting entrance portico supported by square wood posts on a concrete deck is centered on the primary façade. The walls are clad with fletch chestnut siding, with board-and-batten siding on the upper walls beneath the gabled roof peaks. The windows have a combination of 6-over-6 and 3-pane wooden sash. Asphalt shingles cover the roof. Although originally built to house restrooms, this building now is used as display space for a CCC museum.

Resource Nos. 81, 82

Resource Type: Residential resource

Resource Name: Cabin no. 20/ Gamekeeper's cabin and wood shed

Construction Date: ca. 1935

Status: Contributing buildings

Count: 2

Cabin no. 20 originally functioned as the gamekeeper's residence and later was converted for use as a seasonal rental cabin (Photos 43-44). The rustic style, one-story cabin has an L plan with a side-gabled wing attached to a front-gabled block. Built on a solid stone foundation, the walls are composed of round logs with cement chinking, and saddle notching at the corner joints. The windows have both 6-over-6 wooden sash and 6-pane wooden sash. A one-story, shed-roofed porch with round log columns on stone blocks spans the side-gabled wing. Asphalt shingles cover the roof. An exterior stone chimney is centered on the wing's gabled end wall. An interior stone chimney rises from the rear roof slope. The 4-by-2 bay building measures approximately 37 feet by 25 feet.

**United States Department of the Interior
National Park Service**

**National Register of Historic Places
Continuation Sheet**

Section number 7 Page 12

New Deal Resources in Watoga State Park
Historic District

Name of Property

Pocahontas County, West Virginia

County and State

New Deal Resources in West Virginia State
Parks and Forests

Name of multiple listing (if applicable)

Associated with the cabin is a one-story, side-gabled woodshed. The 1-by-1 bay building measures approximately 8 feet, 4 inches by 7 feet, 4 inches. Built on wooden sills, the walls are covered with fletch chestnut board siding. Asphalt shingles sheathe the roof.

Resource No. 83

Resource Type: Engineering resource

Resource Name: Watoga Lake and dam

Construction Date: ca. 1935/ca. 1941-1942/ca. 1955/ca. 1995

Status: Non-contributing structure

Count: 1

The 11-acre fishing lake at Watoga has variously been known as Lake Killibuck, Lake Killbuck, Lake Monongoseneka, but through common usage the lake eventually became known simply as Watoga (Photo 45). It was created by damming Island Lick Run (Photos 46-48). During the 1950s, the lake was drained, cleaned, and converted to warm-water fishing. The dam and spillway were enlarged and reconfigured during the 1990s to improve local flood control.

Resource No. 84

Resource Type: Administrative resource

Resource Name: Park office headquarters and restaurant

Construction Date: ca. 1935

Status: Contributing building

Count: 1

The office headquarters and restaurant building is a fine example of rustic architectural design (Photo 49). The 14-by-3 bay building measures approximately 133 feet by 19 feet. Built on a stone and concrete foundation, the building consists of a two-story, side-gabled central block with a two-story, L-plan wing to the north and a one-story, side-gabled wing to the south. The two-story central block is highlighted by a one-story, shed-roofed front porch with a gabled entrance bay. The porch features square wooden columns with brackets at the top and a wooden rail balustrade. The central block's porch railing extends across the eastern façade of the north and south wings to unify the facades of all three sections. Sheltered by the porch, the main entry is flanked by two paired windows with 10-pane, wooden sash. The building's remaining windows have wooden, 6-over-6 and 1-over-1 sash. The walls are clad with clapboard siding that is stained dark brown. Asphalt shingles cover the multiple-level roof. A massive, interior stone chimney rises from the ridgeline of the central block. Originally, there also were large exterior stone chimneys on the central block's gable end walls, but these were demolished when the wings were added.

The north wing was originally a separate building but was connected to the central block at an unknown date to form a single large building. A porch deck occupies the juncture of the L-shaped north wing's eastern façade and the south wall of the projecting bay. An entry with a single-leaf, multiple-light wooden door is at the south corner of the wing's projecting bay. The north wing has symmetrically

United States Department of the Interior
National Park Service

National Register of Historic Places
Continuation Sheet

Section number 7 Page 13

New Deal Resources in Watoga State Park
Historic District

Name of Property

Pocahontas County, West Virginia

County and State

New Deal Resources in West Virginia State
Parks and Forests

Name of multiple listing (if applicable)

spaced, gable-roofed dormers on the second story with 1-over-1 sash. The north wall of the north wing fronts on the adjacent parking lot. The northern elevation consists of a slightly projecting gabled bay to the west and a side-gabled bay to the east. In the projecting bay, a gable-roofed overhang shelters the first-floor entry, which has a single-leaf wooden door. Two rectangular windows with 1-over-1 wooden sash are symmetrically spaced along the second story. On the adjacent bay to the east, the first story is devoid of fenestration while a gable-roofed dormer is centered on the second story.

The one-story, side-gabled south wing was added during the early 1940s by the West Virginia Conservation Commission. A porch deck spans the eastern façade. Fenestration on the south wing includes windows with 1-over-1 wooden sash and entries with single-leaf wooden doors.

Stone retaining walls extend along the front and rear of the building and on the north side of the building at the parking lot. A double stair with flagstone walks is before the building, along with a stone-lined water channel that runs in front of the building to the nearby lake. This stonework is believed to date from the early 1940s and to have been completed by the West Virginia Conservation Commission, as it does not appear in earlier photographs of the building.

BUCKS RUN CABIN AREA

Resource No. 85

Resource Type: Mechanical resource

Resource Name: Bucks Run Pump House

Construction Date: ca. 1935

Status: Contributing building

Count: 1

This is a one-story, hipped-roofed pump house located on the hillside southeast of cabin no. 16 (Photo 50). Built on a cut stone foundation, the 2-by-1 bay building measures approximately 16 feet, 5 inches by 16 feet, 5 inches. The walls are composed of coursed, cut stone with mortared joints. The window openings are covered with wooden shutters that retain their original iron strap hinges. The entrance door also has original iron hardware. A central metal finial tops the asbestos-shingled roof.

Resource No. 86

Resource Type: Engineering resource

Resource Name: Watoga State Park Reservoir

Construction Date: ca. 1935

Status: Contributing building

Count: 1

The reservoir consists of a concrete cistern faced with cut stone. The top of the cistern has perpendicular style stone parapets along the edges. The cistern measures approximately 11 feet by 25 feet and stands about 4 feet tall. A small, square stone well on the north end houses the valves, petcock, and other mechanical equipment. The reservoir is situated directly adjacent to the Bucks Run Pump House.

United States Department of the Interior
National Park Service

National Register of Historic Places
Continuation Sheet

Section number 7 Page 14

New Deal Resources in Watoga State Park
 Historic District

Name of Property

Pocahontas County, West Virginia

County and State

New Deal Resources in West Virginia State
 Parks and Forests

Name of multiple listing (if applicable)

Resource Nos. 87, 88

Resource Type: Recreational resource

Resource Name: Cabin no. 12 and wood shed

Construction Date: ca. 1935

Status: Contributing buildings

Count: 2

This is a one-story, rustic-style cabin with an L plan (Figure 2). The 4-by-1 bay building measures approximately 37 feet by 24 feet. Built on a solid stone foundation, the walls are composed of round, saddle-notched logs with chisel points at the ends and cement chinking. Small sections of the walls beneath the roof peaks are covered with horizontal board siding. On the primary façade, the side-gabled wing has a one-story, shed-roofed porch with round log columns on a flagstone deck with a stone foundation. A short flight of stone steps accesses the porch. The windows have 6-over-6 and 6-pane wooden sash. The entry doors retain original iron hardware. Asphalt shingles cover the roof. An exterior cut stone chimney is on the rear of the cabin and a second stone chimney rises from the roof. Nearby, there is a one-story, side-gabled wood shed. Built on a pier foundation, the 1-by-1 bay building has fletcher chestnut siding and an asphalt-shingled roof.

Resource Nos. 89, 90

Resource Type: Recreational resource

Resource Name: Cabin no. 13 and wood shed

Construction Date: ca. 1935

Status: Contributing buildings

Count: 2

This is a rustic-style, one-story, front-gabled cabin (Photo 51). Built on a stone foundation, the 2-by-3 bay building measures approximately 25 feet by 28 feet. The walls are square cut logs with V corner notches and cement chinking. Small sections of the walls beneath the roof peaks are covered with horizontal board siding. The entry door retains original iron hardware. The windows have either 6-over-6 or 6-pane wooden sash. The roof is covered with asphalt shingles. On the primary façade, there is a centered, front-gabled porch with square support columns and a turned balustrade on a stone foundation. To the left of the porch, a large, exterior stone chimney is on the side wall, which also is veneered with stone. A gabled, projecting bay is on the side wall to the right of the front porch. On the rear of the cabin, a hyphen enclosed with screens connects to a one-story, hipped-roofed picnic pavilion that also is screened. The pavilion roof has a central metal finial. A set of stone steps and flagstone walks lead from the parking area up to the cabin terrace. Nearby, there is a one-story, side-gabled wood shed. Built on a pier foundation, the 1-by-1 bay building has fletcher chestnut siding and an asphalt-shingled roof.

Resource No. 91, 92

Resource Type: Recreational resource

United States Department of the Interior
National Park Service

National Register of Historic Places
Continuation Sheet

Section number 7 Page 15

New Deal Resources in Watoga State Park
 Historic District

Name of Property

Pocahontas County, West Virginia

County and State

New Deal Resources in West Virginia State
 Parks and Forests

Name of multiple listing (if applicable)

Resource Name: Cabin no. 17/Governor's Cabin and wood shed

Construction Date: ca. 1935

Status: Contributing buildings

Count: 2

This is a one-story, rustic-style cabin with an L plan. The 4-by-1 bay building measures approximately 36 feet, 6 inches by 24 feet. Built on a solid, cut stone foundation, the walls are composed of round logs with saddle notches at the corners and cement chinking. Small sections of the walls beneath the roof peaks are covered with horizontal board siding. On the primary façade, the side-gabled wing has a one-story, shed-roofed porch with round log columns on a flagstone deck with a stone foundation. The windows have 6-over-6 and 6-pane wooden sash. The entry doors retain original iron hardware. Asphalt shingles cover the roof. An exterior cut stone chimney is on the end wall of the side-gabled wing. Nearby, there is a one-story, side-gabled wood shed. Built on a pier foundation, the 1-by-1 bay building has fletcher chestnut siding and an asphalt-shingled roof.

Resource No. 93

Resource Type: Recreational resource

Resource Name: T. M. Cheek Memorial Overlook

Construction Date: ca. 1960

Status: Non-contributing site

Count: 1

The T. M. Cheek Memorial Overlook is believed to date from improvement campaigns undertaken during the 1950s and 1960s (Photos 52-53). An overlook does not appear at this location on the 1937 park base map. The overlook consists simply of a paved, semi-circular pull-off with a series of large, uncut stones along the edge. In the island between the road and pull-off, a landscaped area includes a large rock with a memorial plaque affixed to one side. The plaque reads as follows: "In Memory / 1895 1938 / T. M. Cheek / Conservationist / Humanitarian / May this spot be hal- / lowed by the memory / of one whose state / park work has made / possible the enrich- / ment of countless / lives yet to be." Because of its date of construction, the overlook itself is a non-contributing site. The view from the overlook, however, provides visitors with a vista of the park's forest, which was originally planted during the 1930s and has been maintained to the present day (Photo 53); as noted above, the forest is a contributing aspect of the park's overall designed and managed landscape.

ISLAND LICK CABIN AREA

Resource No. 94

Resource Type: Mechanical resource

Resource Name: Island Lick Pump House

Construction Date: ca. 1935

Status: Contributing building

Count: 1

This 1-by-1 bay building measures approximately 13 feet, 10 inches by 16 feet, 3 inches (Photo 54). The

United States Department of the Interior
National Park Service

National Register of Historic Places
Continuation Sheet

Section number 7 Page 16

New Deal Resources in Watoga State Park
Historic District

Name of Property
Pocahontas County, West Virginia

County and State
New Deal Resources in West Virginia State
Parks and Forests

Name of multiple listing (if applicable)

one-story building has a steeply pitched, front-gabled roof. Both the foundation and walls are composed of cut stone. Beneath the gabled peaks, board-and-batten siding covers the walls. Located left-of-center on the gabled, primary façade, the entry features a Dutch-style door. On the longitudinal walls, the windows have 6-pane wooden sash. Asphalt shingles cover the roof. The pump house is located directly east of cabin no. 11.

Resource No. 95, 96

Resource Type: Recreational resource

Resource Name: Cabin no. 11 and wood shed

Construction Date: ca. 1935

Status: Contributing buildings

Count: 2

This is a rustic-style, one-story, side-gabled cabin with a rear extension (Figure 2; Photo 55). Built on a solid stone foundation, the 3-by-3 bay building measures approximately 28 feet by 26 feet. The walls are composed of square cut logs with V notches at the corners and cement chinking. The rear extension is clad with horizontal board siding. Horizontal board siding covers a small portion of the walls beneath the roof gable peaks. The entry door retains original iron hardware. The windows have either 6-over-6 or 6-pane wooden sash. Spanning the primary façade is a one-story, shed-roofed entrance porch with round log columns on a flagstone deck over a stone foundation. A replacement ramp and steps access the porch. An exterior stone chimney is centered on a gabled side wall and flanked by windows. The roof is covered with asphalt shingles. Nearby, there is a one-story, side-gabled wood shed with a saltbox-style roof. The 1-by-1 bay building measures approximately 7 feet by 6 feet. The walls are composed of square cut logs with V corner notches. Asphalt shingles cover the roof.

Resource No. 97

Resource Type: Recreational resource

Resource Name: Cabin no. 10

Construction Date: ca. 1935

Status: Contributing building

Count: 1

This is a rustic-style, one-story, side-gabled cabin (Figure 2). Built on a stone foundation, the 3-by-2 bay building measures approximately 29 feet by 26 feet. The walls are composed of round logs with saddle notches at the corners and cement chinking. The entry door retains original iron hardware. The windows have either 6-over-6 or 6-pane wooden sash. Spanning the primary façade is a one-story, shed-roofed entrance porch with round columns on a flagstone deck over a stone foundation. An exterior stone chimney is centered on a gabled side wall. The roof is covered with asphalt shingles. The rear of the cabin has a recessed entrance bay flanked by shed-roofed wings. Stone steps from the porch and a flagstone walkway lead to a footbridge across a creek along the rear of the cabin. Stone retaining walls flank the bridge along the creek; these walls have been reconstructed and reinforced with rip-rap cages.

United States Department of the Interior
National Park Service

National Register of Historic Places
Continuation Sheet

Section number 7 Page 17

New Deal Resources in Watoga State Park
 Historic District

Name of Property
 Pocahontas County, West Virginia

County and State
 New Deal Resources in West Virginia State
 Parks and Forests

Name of multiple listing (if applicable)

Resource Nos. 98, 99

Resource Type: Recreational resource

Resource Name: Cabin no. 7 and wood shed

Construction Date: ca. 1935

Status: Contributing buildings

Count: 2

This is a rustic-style, one-and-one-half story, front-gabled cabin with a loft space on the interior (Figure 2; Photo 56). Built on a stone foundation, the 3-by-3 bay building measures approximately 19 feet by 33 feet. The walls are composed of square cut logs with V notches at the corners and cement chinking. Horizontal board siding covers the upper portions of the walls beneath the roof gable peaks. The two entry doors retain original iron hardware. The symmetrically spaced windows have either 6-over-6 or 6-pane wooden sash. The roof is covered with asphalt shingles. On the primary façade, there is gable-roofed entrance porch with square columns. A short flight of stone steps accesses the porch. An interior exterior stone chimney rises from the back of the porch roof. This is the only rental cabin at Watoga with a loft space. Nearby, there is a one-story, side-gabled wood shed. Built on a pier foundation, the 1-by-1 bay building has fletcher chestnut siding and an asphalt-shingled roof.

Resource Nos. 100, 101

Resource Type: Recreational resource

Resource Name: Cabin no. 6 and wood shed

Construction Date: ca. 1935

Status: Contributing buildings

Count: 2

This is a rustic-style, one-story, side-gabled cabin (Figure 2). Built on a stone foundation, the 3-by-3 bay building measures approximately 29 feet by 25 feet. The walls are composed of round logs with saddle notches at the corners and cement chinking. Small sections of the walls beneath the roof gable peaks are covered with board-and-batten siding. The entry door retains original iron hardware. The windows have either 6-over-6 or 6-pane wooden sash. The roof is covered with asphalt shingles. A one-story, shed-roofed porch with round log columns on a flagstone deck and stone foundation spans the left two-third of the primary façade. An exterior stone chimney is centered on the cabin's gabled end wall. On the rear of the cabin is a recessed entrance bay flanked by shed-roofed wings. Stone steps and flagstone walkways lead from the adjacent parking area. Nearby is a one-story, side-gabled wood shed. The 1-by-1 bay structure is built on a stone and log foundation. The walls are built with round logs with corner saddle notches and no chinking. Asphalt shingles cover the roof.

Resource No. 102

Resource Type: Recreational resource

Resource Name: Cabin no. 5

Construction Date: ca. 1935

United States Department of the Interior
National Park Service

National Register of Historic Places
Continuation Sheet

Section number 7 Page 18

New Deal Resources in Watoga State Park
 Historic District

Name of Property

Pocahontas County, West Virginia

County and State

New Deal Resources in West Virginia State
 Parks and Forests

Name of multiple listing (if applicable)

Status: Contributing building

Count: 1

This is a rustic-style, one-story, front-gabled cabin with a side-gabled rear extension (Figure 2). Built on a stone foundation, the 1-by-3 bay building measures approximately 17 feet by 33 feet. The walls are composed of square cut logs with V notches at the corners and cement chinking. Horizontal board siding covers a small portion of the walls beneath the roof gable peaks. The entry door retains original iron hardware. The windows have either 6-over-6 or 6-pane wooden sash. Spanning the primary façade is a one-story, gable-roofed entrance porch with square columns and a turned balustrade. An exterior, cut stone chimney is centered on the longitudinal wall and features an extended side wall. The roof is covered with asphalt shingles.

Resource No. 103

Resource Type: Recreational resource

Resource Name: Cabin no. 4

Construction Date: ca. 1935

Status: Contributing building

Count: 1

This is a rustic-style, one-story, front-gabled cabin (Figure 2; Photo 57). Built on a stone foundation, the 2-by-3 bay building measures approximately 27 feet by 28 feet. The walls are composed of square cut logs with V notches at the corners and cement chinking. Horizontal board siding covers a small portion of the walls beneath the roof gable peaks. The entry door retains original iron hardware. The windows have either 6-over-6 or 4-pane wooden sash. The roof is covered with asphalt shingles. On the primary façade, there is a centered, front-gabled porch with square support columns and a turned balustrade on a stone foundation. To the left of the porch, a large, exterior stone chimney is on the side wall, which also is veneered with stone. A gabled, projecting bay is on the side wall to the right of the front porch. On the rear of the cabin, a hyphen enclosed with screens connects to a one-story, hipped-roofed picnic pavilion that also is screened. The pavilion features mortise and tenon joints with wood pegs, and the roof has a central metal finial.

ARBORETUM AREA

Resource No. 104

Resource Type: Designed and managed landscape

Resource Name: Fred E. Brooks Memorial Arboretum

Construction Date: ca. 1935

Status: Contributing site

Count: 1

Watoga State Park has a 400-acre memorial arboretum in honor of Fred E. Brooks, a noted West Virginia naturalist, writer, entomologist, and botanist who died in 1933. There is a memorial plaque set into a rock bearing the dedication to Mr. Brooks. The arboretum encompasses the entire drainage system of Two Mile Run. Within the arboretum are about 6.5 miles of trails and it is landscaped with native

United States Department of the Interior
National Park Service

National Register of Historic Places
Continuation Sheet

Section number 7 Page 19

New Deal Resources in Watoga State Park
 Historic District

Name of Property
 Pocahontas County, West Virginia

County and State
 New Deal Resources in West Virginia State
 Parks and Forests

Name of multiple listing (if applicable)

trees, shrubs, and plants to serve as an outdoor educational lab (Photos 58-60). A foot bridge, stone steps, and a stone sign column are at the entrance (Photos 61). There are also stone steps and foot bridges on the trails. The Brooks Arboretum was dedicated in 1938 by the Academy of Science and the West Virginia Conservation Commission. The arboretum was the first of its kind in West Virginia and one of the first to be located in a state park in the country.

Resource No. 105

Resource Type: Recreational resource

Resource Name: Dragon Draft Trail Shelter

Construction Date: ca. 1938

Status: Contributing structure

Count: 1

This one-story, shed-roofed trail shelter is located at the junction of the Dragon Draft and Buckhorn trails in the Brooks Memorial Arboretum (Photo 62). The 3-by-1 bay building measures approximately 16 feet by 11 feet. It has a stone foundation and a flagstone floor. The roof is supported by round logs that are within a closed, cut stone railing. The railing thickens toward the bottom, creating a pyramidal effect. The roof was originally a hip style but was recently replaced with the shed style. Asphalt shingles cover the roof. On the interior, there are flat wooden benches on three sides.

RIVER CABIN AND RIVERSIDE CAMPGROUND AREA

Resource No. 106, 107

Resource Type: Recreational resource

Resource Name: Cabin No. 2 and wood shed

Construction Date: ca. 1935

Status: Contributing buildings

Count: 2

This is a rustic-style, one-story cabin with a T plan (Photo 63). The bar of the T is at the rear of the cabin. Built on a solid stone foundation the 3-by-2 bay building measures approximately 26 feet by 35 feet. The walls are composed of square cut logs with V corner notches and cement chinking. The windows have either 6-over-6 or 6-pane wooden sash. The entry door retains original iron hardware. Asphalt shingles cover the roof. An exposed cut stone chimney is right-of-center on the side wall. On the primary façade, the gabled roof extends to shelter a porch. The roof is supported with round log columns on a flagstone deck and stone foundation. Nearby is a one-story, side-gabled wood shed with a saltbox style roof. The 1-by-1 bay building is built on a stone and log foundation. The walls are composed of square cut logs with V corner notching and no chinking. Asphalt shingles cover the roof.

Resource No. 108

Resource Type: Recreational resource

Resource Name: Cabin no. 1

United States Department of the Interior
National Park Service

National Register of Historic Places
Continuation Sheet

Section number 7 Page 20

New Deal Resources in Watoga State Park
 Historic District

Name of Property
 Pocahontas County, West Virginia

County and State
 New Deal Resources in West Virginia State
 Parks and Forests

Name of multiple listing (if applicable)

Construction Date: ca. 1935

Status: Contributing building

Count: 1

This is a rustic-style, one-story, side-gabled cabin. Built on a stone foundation, the 3-by-3 bay building measures approximately 39 feet by 27 feet, 7 inches. The walls are composed of round logs with saddle notches at the corners and cement chinking. Small sections of the walls beneath the roof gable peaks are covered with half-plank vertical siding. The entry door retains original iron hardware. The windows have either 6-over-6 or 6-pane wooden sash. Centered on the primary façade is front-gabled porch with round log posts on stone piers. The porch has a flagstone floor on a stone foundation. An exterior stone chimney is centered on the cabin's rear wall. The roof is covered with asphalt shingles. A set of stone steps and a short stone retaining wall are on the front of the cabin, while a stone retaining wall extends along the rear.

Resource No. 109

Resource Type: Recreational resource

Resource Name: Riverside campground

Construction Date: ca. 1980

Status: Non-contributing site

Count: 1

Located near the Greenbrier River on the west side of Watoga State Park, Riverside Campground was added in ca. 1980 (Photos 64-65). A paved access road leads to the campground sites. Each site is situated in a cleared area and is surrounded by woods and other screening vegetation. A check-in station (Photo 65) and two bathhouses are within the campground. Each is a frame, side-gabled, one-story building with wooden siding stained dark brown and an asphalt-shingled roof. The buildings feature minimal architectural detailing and are designed to blend unobtrusively with their natural setting. Because the campground was constructed outside the period of significance for the historic district, it is a non-contributing resource.

LOOKOUT TRAIL AREA

Resource No. 110

Resource Type: Fire prevention and protection resource

Resource Name: Ann Bailey lookout tower

Construction Date: ca. 1935

Status: Contributing building

Count: 1

The Ann Bailey Lookout Tower was constructed by the CCC. Built on a stone foundation, it is a two-story, 1-by-1 bay log building without chinking. Asphalt shingles cover the hipped roof. The second story overhangs the first, similar to a forebay on a cellar house. The first floor houses the staircase, which lead up to the second floor. The large window openings on the second floor overlook nearby Droop Mountain.

United States Department of the Interior
National Park Service

National Register of Historic Places
Continuation Sheet

Section number 7 Page 21

New Deal Resources in Watoga State Park
 Historic District

Name of Property

Pocahontas County, West Virginia

County and State

New Deal Resources in West Virginia State
 Parks and Forests

Name of multiple listing (if applicable)

Resource No. 111

Resource Type: Historic site resource

Resource Name: Workman-Jarvis cabin

Construction Date: ca. 1887, ca. 1935, ca. 1981

Status: Contributing building

Count: 1

The ca. 1887 Workman-Jarvis Cabin was stabilized and renovated by the CCC ca. 1935 (Photo 66). The single-pen cabin is a one-story, 2-by-1 bay, side-gabled building with a stone pier foundation. The walls are constructed with square logs with half-dovetail corner notching and cement chinking. The roof is covered with metal. Vertical board siding clads the upper portions of the walls just beneath the gabled peaks. The windows originally had 6-over-6 wooden sash, but the sash have been removed. Wooden shutters cover the window openings. On the interior, the cabin features a loft just beneath the roof. The building was renovated again in 1981 by park staff.

WATOGA MAINTENANCE AREA

The maintenance area retains five buildings originally associated with CCC Camp Watoga. All have been adaptively re-used over the years. Unlike the rustic style that characterizes the public and recreational buildings at Watoga State Park, the CCC buildings are much more utilitarian in appearance. The spatial arrangement of the buildings in the former CCC camp also display the rectilinear plan typical of the military-influenced camps from the period (Photo 67).

Resource No. 112

Resource Type: CCC-related resource

Resource Name: Storage building/ Camp Watoga barracks

Construction Date: ca. 1933

Status: Contributing building

Count: 1

Built in late 1933, this building originally housed Camp Watoga enrollees (Photo 68). It was later converted to a hunting lodge for recreational purposes and now is used as a storage building. This is a 1-by-11 bay building measuring approximately 20 feet, 4 inches by 94 feet, 8 inches. The one-story, front-gabled building rises from a concrete block pier foundation. The walls are clad with German and T-111 siding. The windows have 9-pane wooden sash, while the entries retain original, five-panel doors. The roof has exposed rafter tails and brackets in the gable ends. Asphalt shingles cover the roof. An exterior concrete block chimney is centered on one longitudinal wall.

Resource No. 113

Resource Type: CCC-related resource

Resource Name: Gas shed

United States Department of the Interior
National Park Service

National Register of Historic Places
Continuation Sheet

Section number 7 Page 22

New Deal Resources in Watoga State Park
 Historic District

Name of Property
 Pocahontas County, West Virginia

County and State
 New Deal Resources in West Virginia State
 Parks and Forests

Name of multiple listing (if applicable)

Construction Date: ca. 1933

Status: Contributing building

Count: 1

This one-story, front-gabled shed has a concrete and log foundation (Photo 69). The walls are composed of square logs with V notches at the corner joints and cement chinking. The windows have 6-pane wooden sash. A front-gabled porch spans the primary façade. The porch roof is supported by round logs on concrete piers, and has a poured concrete floor. The porch shelters a centered entry with a flush panel, wooden door. Asphalt shingles cover the roof and a small, concrete-block flue rises from the ridgeline. The 1-by-1 bay building measures 10 feet by 10 feet.

Resource No. 114

Resource Type: CCC-related resource

Resource Name: Residence/Camp Watoga Officer's Quarters

Construction Date: ca. 1933

Status: Contributing building

Count: 1

This is a one-story, hipped-roofed residence (Photo 70-71). The 3-by-1 bay building measures approximately 32 feet by 30 feet, 4 inches. Built on a stone and concrete block foundation, the walls are clad with German and clapboard siding. The windows have replacement, 1-over-1 sash. The roof has exposed rafter tails and is covered with asphalt shingles. An exterior, cut stone chimney is centered on one side elevation. The shed-roofed entry porch has been enclosed with clapboard siding and the entry has a flush panel door. A newer, one-story, shed-roofed wing with board-and-batten siding extends from the rear wall.

Resource No. 115

Resource Type: CCC-related resource

Resource Name: Maintenance Building & Garage/ Camp Watoga Garage

Construction Date: ca. 1933

Status: Non-contributing building

Count: 1

This is a one-story, front-gabled building that has been jacked up and placed on a concrete block and poured concrete foundation (Photo 72). The entire front wall was rebuilt and sided with T-111 siding, while the remaining walls are clad with German siding. A replacement metal overhead door is centered on the front wall. An entry with a replacement, single-leaf door is immediately to the right of the overhead door. Three windows are regularly spaced along each of the longitudinal walls, and two windows pierce the rear gabled end wall. A single window is centered beneath the gabled peak of the front and rear gabled end walls. The windows have 9-pane wooden sash. Asphalt shingles cover the roof. The 2-by-3 bay building measures approximately 30 feet, 9 inches by 31 inches.

United States Department of the Interior
National Park Service

National Register of Historic Places
Continuation Sheet

Section number 7 Page 23

New Deal Resources in Watoga State Park
 Historic District

Name of Property
 Pocahontas County, West Virginia

County and State
 New Deal Resources in West Virginia State
 Parks and Forests

Name of multiple listing (if applicable)

Resource No. 116

Resource Type: CCC-related resource

Resource Name: Maintenance building/Camp Watoga recreation building

Construction Date: ca. 1933

Status: Contributing building

Count: 1

This 3-by-13 bay building measures approximately 20 feet, 3 inches by 112 feet (Photo 73). The front-gabled one-story building is constructed on a concrete block pier foundation. Vertical board siding covers the walls. The primary entry is centered on a gable end wall and retains an original, five-panel wooden door. The longitudinal walls and rear gabled end wall feature regularly spaced square windows. The windows have 6- and 9-pane wooden sash. The roof has exposed rafter tails and is covered with asphalt shingles.

Resource No. 117

Resource Type: Residential resource

Resource Name: Assistant Superintendent's Residence

Construction Date: ca. 1970

Status: Non-contributing building

Count: 1

Built in a rustic style sympathetic to architectural resources elsewhere within Watoga, the superintendent's residence is located a short distance southeast of the maintenance area (Photo 74). The one-story, side-gabled dwelling consists of a central block flanked by two smaller sections. All sections have a stacked stone foundation and the walls are clad with horizontal wooden siding stained a dark brown. Asphalt shingles cover the roof. On the central block's northwestern façade, a centered entry is sheltered by a gable-roofed stoop with a stone and wood deck. The entry is flanked by picture windows, each of which has a fixed central light sash and four-light sidelights. An inset porch spans the northwestern façade of the southwestern block. A stone chimney rises from the rear roof slope. Constructed of similar materials, a small-scale, gable-roofed addition is on the southeastern (rear) façade. Because it was considered after the historic district's period of significance, this is a non-contributing building.

BEAVER CREEK CAMPGROUND AREA

Resource No. 118, 119

Resource Type: Recreational resource

Resource Name: Beaver Creek campground; Check-in station and wood shed

Construction Date: ca. 1953; ca. 1934

Status: Non-contributing site; contributing building

Count: 1 non-contributing; 1 contributing

The Beaver Creek Campground is located south of the maintenance area at Watoga Park. A paved access

United States Department of the Interior
National Park Service

National Register of Historic Places
Continuation Sheet

Section number 7 Page 24

New Deal Resources in Watoga State Park
 Historic District

Name of Property
 Pocahontas County, West Virginia

County and State
 New Deal Resources in West Virginia State
 Parks and Forests

Name of multiple listing (if applicable)

road leads to the campground sites (Photo 75). Each site is situated in a cleared area and is surrounded by woods and other screening vegetation. The check-in station is a 3-by-1 bay, one-story, side-gabled building that measures approximately 38 feet by 16 feet, 2 inches (Photo 76). Built on a concrete block, pier foundation, the walls are covered with horizontal board siding. The roof has exposed rafter tails, and is covered with asphalt shingles. On the primary façade, a small-shed-roofed porch has a wooden deck and square support posts. Large double freight doors on the north end of the building lead into a room that has one wall screened in to aerate the wood storage. This building was relocated from the park's South Entrance area to serve as the Check-In Station for the campground.

SOUTH ENTRANCE AREA

Resource No. 120

Resource Type: Residential resource

Resource Name: Superintendent's Residence

Construction Date: ca. 1935

Status: Contributing building

Count: 1

This is a two-story, rustic-style dwelling with a cruciform plan (Photo 77). The central block is flanked by one-story, side-gabled wings, with an additional one-story wing to the southeast and a small, shed-roofed wing at the rear. Built on a stone foundation, the 9-by-2 bay building measures approximately 56 feet by 28 feet. The central block is composed of square cut logs with V corner notches and cement chinking. Small sections beneath the gable roof peaks are covered with horizontal board siding. The flanking wings have clapboard siding, while the rear wing has board-and-batten siding. A massive interior stone chimney with 3 metal flues rises from the central block. The wing furthest to the southeast has an exterior stone chimney on the gable end wall. The windows have replacement sash with 6-over-6 false muntins. The entry doors retain their original iron hardware. Asphalt shingles cover all the roof levels. The northwest wing has a small entrance porch with square wood columns and a wooden railing. The southeast wing has a small, gable-roofed porch with square wooden posts on a flagstone deck. To the rear of the house is a tall retaining wall built of cut stone and flagstone walkways.

Resource No. 121

Resource Type: Administrative resource

Resource Name: Main supply building

Construction Date: ca. 1935

Status: Contributing building

Count: 1

This 8-by-2 bay, rustic-style building measures approximately 110 feet by 24 feet (Photo 78). Built on a stone foundation, the two-story, side-gabled building has horizontal board siding. Small square windows are regularly spaced along the walls, and have 6-pane wooden sash with horizontal iron bars. Asbestos shingles cover the roof. A louvered cupola is centered on the roof. The building features a projecting,

United States Department of the Interior
National Park Service

National Register of Historic Places
Continuation Sheet

Section number 7 Page 25

New Deal Resources in Watoga State Park
Historic District

Name of Property
Pocahontas County, West Virginia

County and State
New Deal Resources in West Virginia State
Parks and Forests

Name of multiple listing (if applicable)

front-gabled entrance bay. The bay's roof extends to form a small porch roof with large end knee braces. The double entry has herringbone freight doors with original iron hardware, flanked by small square windows with 6-pane sash. A replacement wooden deck fronts the entry bay. On the end of the building is a small, gabled wing with a herringbone freight door that retains original iron hardware.

New Deal Resources in Watoga State Park
Name of Property

Pocahontas County, WV
County and State

8. Statement of Significance

Applicable National Register Criteria

(Mark "x" in one or more boxes for the criteria qualifying the property for National Register listing.)

- ☒ A Property is associated with events that have made a significant contribution to the broad patterns of our history.
- ☐ B Property is associated with the lives of persons significant in our past.
- ☒ C Property embodies the distinctive characteristics of a type, period, or method of construction or represents the work of a master, or possesses high artistic values, or represents a significant and distinguishable entity whose components lack individual distinction.
- ☐ D Property has yielded, or is likely to yield, information important in prehistory or history.

Criteria Considerations

(Mark "x" in all the boxes that apply.)

Property is:

- ☐ A Owned by a religious institution or used for religious purposes.
- ☐ B removed from its original location.
- ☐ C a birthplace or grave.
- ☐ D a cemetery.
- ☐ E a reconstructed building, object, or structure.
- ☐ F a commemorative property.
- ☐ G less than 50 years old or achieving significance within the past 50 years.

Areas of Significance

(Enter categories from instructions.)

SOCIAL HISTORY

POLITICS/GOVERNMENT

CONSERVATION

ENTERTAINMENT/RECREATION

ARCHITECTURE

Period of Significance

1933 - 1942

Significant Dates

June 18, 1933; May 15, 1934; July 16, 1935;

March 5, 1937; July 1, 1937; October 4, 1937

Significant Person

(Complete only if Criterion B is marked above.)

N/A

Cultural Affiliation

N/A

Architect/Builder

Civilian Conservation Corps (CCC)

National Park Service (NPS)

Period of Significance (justification)

The period of significance, 1933-1942, spans the period from the establishment of CCC Camp Watoga to 1942, when the camp was abandoned.

Criteria Considerations (explanation, if necessary)

New Deal Resources in Watoga State Park
Name of Property

Pocahontas County, WV
County and State

Statement of Significance Summary Paragraph (Provide a summary paragraph that includes level of significance and applicable criteria.)

The New Deal Resources in Watoga State Park Historic District is associated with the New Deal Resources in West Virginia State Parks and Forests Multiple Property Listing. Watoga State Park has its beginnings in 1925 when West Virginia purchased 4,546 acres to create a new state park. Little development took place here until the early 1930s. Development of the park was directly related to President Franklin D. Roosevelt's New Deal programs for work relief, conservation, and developing recreational opportunities within each state. The National Park Service (NPS) assisted with the initial park planning and design. The Civilian Conservation Corps (CCC) was responsible for the first construction projects within the park. Consequently, the Watoga historic district is associated with the following historic contexts as explicated in the New Deal Resources in West Virginia State Parks and Forests Multiple Property Listing: State Park and Forest Development in West Virginia, 1933-1942; New Deal Federal Relief Programs in West Virginia State Parks and Forests, 1933-1942; Rustic Style Architecture in West Virginia State Parks and Forests, 1933-1942; and Landscape Design and Landscape Management in West Virginia State Parks and Forests, 1933-1942. The historic district is significant at the state level under Criteria A in the areas of significance of Social/History, Politics/Government, Conservation, and Entertainment/Recreation for its association with New Deal-era federal work relief programs, with conservation programs initiated at the federal level and carried out at the state level, and with recreational development in the state of West Virginia. The historic district also is significant under Criterion C in the area of significance of Architecture for its rustic architecture as designed and carried out by the CCC and for its use of NPS park planning and design principles. The period of significance, 1933-1942, spans the period from the establishment of CCC Camp Watoga to 1942, when CCC activity ceased in the park and the camp was abandoned.

Narrative Statement of Significance (Provide at least one paragraph for each area of significance.)

(see continuation sheet)

Developmental history/additional historic context information (if appropriate)

Additional developmental history and historic context information is available in the Multiple Property Documentation Form, New Deal Resources in West Virginia State Parks and Forests (Sweeten 2010).

**United States Department of the Interior
National Park Service****National Register of Historic Places
Continuation Sheet**Section number 8 Page 26New Deal Resources in Watoga State Park
Historic District

Name of Property

Pocahontas County, West Virginia

County and State

New Deal Resources in West Virginia State
Parks and Forests

Name of multiple listing (if applicable)

Narrative Statement of Significance (continued)*Watoga Area Prior to 1933*

Watoga State Park had its beginnings in January 1925, when the West Virginia Game and Fish Commission purchased 4,526 acres in southern Pocahontas County to create a state forest (Beanblossom 2010). This initial land purchase was made from the Watoga Land Association, which had intended to see an African American community established here but had not succeeded. The parcel was named for a railroad station located between Seebert and Buckeye on the Greenbrier Division of the Chesapeake & Ohio Railway. Various spellings for Watoga include Watauga, a Cherokee word of unknown meaning, although it is believed to refer to water. There are a Watauga Creek and a Wateuga River, both in Tennessee (Gioulis 2008:313). Watoga is the oldest state park in West Virginia. With land purchases started in 1924, only Seneca State Forest precedes Watoga in the state's current state park and forest system (Beanblossom 2010).

The Game and Fish Commission intended to use the land for a wildlife preserve and timber production. In 1925, the state hired the forest's first ranger, whose primary responsibility was patrolling for forest fires. A year later, a fire tower was built and telephone lines established between the ranger and the fire tower observer. No further development at the property occurred through the remainder of the 1920s. The economic crisis precipitated by the stock market crash in late 1929 struck West Virginia hard. State revenues evaporated, and the state had few resources to undertake public improvement projects through the early 1930s (Gioulis 2008:313).

The New Deal and Watoga State Park

The origins of New Deal resources at Watoga State Park lay in the federal relief programs implemented by President Franklin D. Roosevelt as part of the New Deal. In conceptualizing the New Deal, Roosevelt emphasized work relief and natural resource conservation among his top priorities. Creating publicly accessible recreational venues also figured prominently among his goals (Sweeten 2010). The New Deal coupled work relief programs with addressing public needs by focusing on infrastructure projects. In 1933, Roosevelt called for the creation of a "Civilian Conservation Corps" that would focus its efforts on forestry, soil erosion prevention, flood control, and similar projects. Furthermore, the CCC could be used to create publicly accessible venues for tourism and recreation. As a result, West Virginia was able to use the New Deal as a launch point for creating a state park system. Some existing state parks and forests, such as Watoga, were among the state's sites developed during the New Deal period. The CCC assumed responsibility for developing Watoga. Ultimately, three different CCC camps operated at Watoga during the 1930s: Camp Watoga, Camp Seebert, and Camp Will Rogers (Harr 1992:16, 30, 32-33).

In 1934, West Virginia's state legislature appropriated \$75,000 for more land acquisitions in Watoga. In August of that year, West Virginia acquired an additional 5,106 acres for Watoga State Park. Several smaller tracts also were acquired, including a 108-acre parcel, an 8-acre parcel, a 255-acre parcel, and a 33-acre parcel (Beanblossom 2010). These purchases came largely as a result of the efforts of T.M. Cheek, assistant director of the Conservation Commission. Wildlife management programs figured prominently among the early projects at Watoga. N.T. Holbrook served as Gamekeeper from 1933 to 1938. He and his wife lived in Cabin No. 20, and maintained an adjacent 15-acre pen surrounded by a

United States Department of the Interior
National Park Service

National Register of Historic Places
Continuation Sheet

Section number 8 Page 27

New Deal Resources in Watoga State Park
 Historic District

Name of Property
 Pocahontas County, West Virginia

County and State
 New Deal Resources in West Virginia State
 Parks and Forests

Name of multiple listing (if applicable)

12-foot-high fence. This paddock served as a rearing pen for deer, turkey, raccoon, and game birds and these animals were used to restock a seven-county area. The pen later became the site of the current swimming pool. From 1937 to 1939, Holbrook and his wife lived in the Workman-Jarvis cabin atop the mountain so the game pens would not be in the park's more public spaces (Gioulis 2008:314).

On June 18, 1933, the first CCC camp, Camp Watoga, was established by CCC Company 1525. The camp was located in the park's current maintenance area. Because Watoga initially was planned to be a state forest, the CCC camp operated under the auspices of the West Virginia Division of Forestry. As with other CCC camps, Camp Watoga enrollees initially occupied tents until barracks were erected in the late fall of 1933. One of these barracks is still extant and used as a storage building (Gioulis 2008:313).

By May 1934, it was decided that Watoga would be developed as a state park rather than a forest. The newly established park was placed under the management of the West Virginia Conservation Commission. Camp Watoga was redesignated as SP-5, a state park camp under the auspices of the National Park Service, Department of the Interior. Captain LeGrand H. Headington served as the Company Commander and S.E. Neese as the camp superintendent (Gioulis 2008:313).

The second camp established in Watoga was Camp Seebert on May 15, 1934 (Figure 3). The camp site stood on the Greenbrier River at the mouth of Island Lick Run near the current Cabin nos. 1 and 2. A typical CCC camp consisted of about a dozen wooden buildings: mess hall, four barracks with capacity for 50 men, officer's quarters, garages, tool houses, supply building, and bath houses. Because the Army assumed operational responsibilities for the camps, they were usually laid out according to military standards in a rectilinear fashion. (Harr 1992:v). Camp Seebert's layout and resources included an officer's quarters, foremen's quarters, truck garage with attached work shop, park office building, mess hall (with attached officer's mess), administrative building, recreation hall, basketball court and horseshoe pits, 5 barracks buildings with clothes lines between the barracks, and bathhouse. A short distance from the mess hall was a mess kitchen, laundry building, and coal bin. The buildings set aside for the CCC enrollees, such as the barracks, recreation hall, and mess hall, were arranged in a rectilinear fashion and clustered together. The garage, foremen's quarters, park office, and officer's quarters were set some distance apart from the main camp and from one another. The site plan for Camp Seebert also shows the locations of roads, sidewalks, power lines, septic tanks, and water tanks that were constructed to serve the camp's needs.

Camp Seebert, along with Camp Watoga, completed the majority of the early construction projects in Watoga State Park. CCC Company 1541V established Camp Seebert. It operated under the command of Captain Keith R. Smith and consisted of 185 World War I veterans. During the fall of 1934, Company 1541V was replaced by Company 1535, which had transferred from Camp Pocahontas, P-56, in Cass (Gioulis 2008:313-314).

The Camp Seebert enrollees' first projects included building the road from Beaver Creek to the Greenbrier River, seasonal cabins, the office/restaurant building, and superintendent's residence, as well

United States Department of the Interior
National Park Service

National Register of Historic Places
Continuation Sheet

Section number 8 Page 28

New Deal Resources in Watoga State Park
 Historic District

Name of Property

Pocahontas County, West Virginia

County and State

New Deal Resources in West Virginia State
 Parks and Forests

Name of multiple listing (if applicable)

as work on the dam. They also built and operated the Current Run Ferry. Camp Seebert closed on March 5, 1937, and the officer's quarters building was transferred to the park. This building functioned as rental cabin no. 3 until it burned to the ground on October 13, 1987; the stone foundation, steps and chimney are still extant. After Camp Seebert closed, Camp Watoga operated the Current Run Ferry until the boat sank in 1938 (Gioulis 2008:314).

The third CCC camp to be established in Watoga was Camp Will Rogers, Camp SP-7, on July 16, 1935. It stood in a meadow near the south entrance to the park. Established by CCC Company 3537, it initially had 23 enrollees from London, Kentucky. They lived in tents while permanent buildings were being erected by local carpenters. Camp Will Rogers was established to develop the southern end of Watoga State Park, with their main focus planned as a 40-acre lake with a dam across Laurel Run. Captain Russell L. Schoene served as Company Commander and Sidney E. Neese as camp Superintendent. Camp Will Rogers was abandoned on October 4, 1937, due to lack of approval for federal funding for the period October 1937-March 1938. The camp's unfinished projects were turned over to Camp Watoga and the Laurel Run lake and dam project was never started (Gioulis 2008:314).

Watoga State Park opened to the public on July 1, 1937, along with three other state parks in West Virginia; Babcock, Cacapon, and Lost River. A March 1937 map of the park (Figure 4) shows the locations of visitor amenities, such as cabin groups and horse and walking trails, but devotes more detail to infrastructure elements, such as power lines, dams, truck roads, fences, pump houses, garages, telephone lines, and disposal tanks. Landscaping elements, such as wildlife clearings, vegetation targeted for thinning, springs and waterholes, also were depicted. In the four years since the establishment of Camp Watoga, the CCC enrollees had accomplished a tremendous amount of work.

A prominent feature within Watoga is a 400 acre tract of land used as an arboretum. It is named for Fred E. Brooks, a noted West Virginia naturalist who died in 1933. CCC enrollees built 6½ miles of trails and a shelter for the arboretum, as well as completing all the planting and landscaping. The arboretum opened to the public in 1938, making it the first of its kind in West Virginia and one of the first to be located within a state park in the country (Gioulis 2008:314).

The last projects completed at Watoga by the CCC were the swimming pool, started in 1939 and finished a year later, and a water system in the picnic area, also completed in 1940. Although Camp Seebert and Camp Will Rogers closed in 1937, Camp Watoga continued to operate until 1942. The CCC workers occupied themselves with maintenance projects and small construction projects (Gioulis 2008:314).

All of the CCC camps in Watoga utilized three quarries within the park for their stone. One of the quarries was in the Rock Run area and one was behind the Island Lick Cabin area, while the third quarry's location is unknown. As was typical at other CCC Camps, much of the construction materials used at Watoga was salvaged onsite wherever possible. This included blighted chestnut and other hardwood timber, as well as scrap metal for custom iron work. Use of locally available materials was a character-defining element of the rustic style developed by the CCC in West Virginia's state parks. The

United States Department of the Interior
National Park Service

National Register of Historic Places
Continuation Sheet

Section number 8 Page 29

New Deal Resources in Watoga State Park
 Historic District

Name of Property
 Pocahontas County, West Virginia

County and State
 New Deal Resources in West Virginia State
 Parks and Forests

Name of multiple listing (if applicable)

CCC workers also studied nineteenth-century buildings in the area to duplicate settlement-period construction techniques as part of the rustic design incorporated into projects at Watoga (Gioulis 2008:315).

Park Development After the CCC Period

As the CCC's activities began to wind down at Watoga, the West Virginia Conservation Commission undertook a few small improvement projects. The lake dam was rebuilt and the administration building enlarged and remodeled in 1941-1942, and the following year, a former CCC barracks was converted to lodging for hunters. The current ice house behind the administration building was constructed in 1945 and some development work took place in the playground area in 1946. Finally, the bathhouse for the pool was built in 1948 using stone from the Scott farm near Droop Mountain Battlefield State Park. The projects undertaken by the Conservation Commission closely mimicked the CCC's construction methods and materials (Gioulis 2008:315).

West Virginia undertook many improvements in its state park system during the 1950s, including at Watoga. In 1953, Watoga received Beaver Creek, the first campground built in a West Virginia state park. Eight deluxe cabins were added to Watoga's original CCC cabins in 1955. Several miles of road within the park were also paved during this period. Around the same time, ownership of 5 acres of park land was transferred to the West Virginia Division of Highways, most likely for highway development (Beanblossom 2010). During the 1960s, repair and renovation projects for many of the existing structures were undertaken. Much of this work was completed through the STEP program, which provided unemployed persons with job skills and training. The Governor's Summer Youth Program continued similar work in the 1970s. The planning for the Riverside Campground also began during this period but the campground did not actually open to the public until mid-1980 (Gioulis 2008:315). The last recorded land purchase for Watoga came in 1974, when a 48-acre parcel was added. This is the only portion of the park that was not within the park's boundaries during the New Deal period (Beanblossom 2010).

Significance and Integrity

The Watoga State Park historic district is associated with all four of the historic contexts described in the New Deal Resources in West Virginia State Parks and Forests Multiple Property Listing. Watoga is significant for its association with State Park and Forest Development in West Virginia, 1933-1942. This association also relates to the areas of significance of Conservation and Entertainment/Recreation. The state of West Virginia acquired land to create Watoga in 1925, but was unable to develop it until the advent of New Deal public works programs. In addition to providing recreational opportunities, the park system initiated conservation and environmental restoration efforts on lands previously deemed marginal and worthless. Awareness of the need to conserve natural resources to foster economic development and environmental health played an important role in the maturing environmental movement of the twentieth century.

United States Department of the Interior
National Park Service

National Register of Historic Places
Continuation Sheet

Section number 8 Page 30

New Deal Resources in Watoga State Park Historic District
Name of Property Pocahontas County, West Virginia
County and State New Deal Resources in West Virginia State Parks and Forests
Name of multiple listing (if applicable)

Watoga State Park was associated with New Deal Federal Relief Programs in West Virginia State Parks and Forests from 1933 to 1942. CCC Camp Watoga undertook construction projects at the park. This association also relates to the areas of significance of Politics/Government and Social/History. The CCC provided job training and employment opportunities to its enrollees, as well as a net positive economic impact on nearby communities. As a result, the program was an important component of the Roosevelt administration's efforts to ameliorate the effects of the Great Depression. The CCC provided job training and employment opportunities to its enrollees, as well as a net positive economic impact on nearby communities. As a result, the government program was an important component of the Roosevelt administration's efforts to ameliorate the effects of the Great Depression. The social effects of the CCC lingered for decades thereafter. The enrollees who had participated in the program gained job training and educational benefits that were useful throughout their lives. The economic benefits provided to nearby communities aided in social cohesion and created opportunities that permitted local residents to stay near their homes. The parks and forests improved by New Deal programs also became tourist destinations that have continued to draw visitors through the present day.

Watoga retains numerous examples of rustic architecture, making it significant for its association with Rustic Style Architecture in West Virginia State Parks and Forests, 1933-1942. This association also relates to the area of significance of Architecture. All of the major architectural features at Watoga, including the superintendent's residence, administrative building, rental cabins, and lookout tower, are fine examples of rustic design, while the resources left over from Camp Watoga are representative of the utilitarian buildings used at CCC camps. The use of natural, locally available materials, particularly stone and wood, is a defining characteristic of the style. Labor-intensive construction methods and fine craftsmanship also are evident. As illustrated by the drawings of cabins, the Camp Seebert site plan, and the Watoga State Park base map, the NPS worked closely with the West Virginia Conservation Commission in designing the buildings at Watoga (Figures 1-4).

Also with regard to the architecture area of significance, the original layout, spatial relationships, and circulation patterns at Watoga are associated with the Landscape Design and Landscape Management in West Virginia State Parks and Forests, 1933-1942. Both rustic architecture and landscape design called for harmonizing with nature and use of locally available materials. This approach allowed the man-made forms to blend with their overall setting. An example of this landscape design esthetic is shown in the Watoga State Park base map (Figure 4). The map includes topographic features and contour lines, and clearly illustrates how roads and trails were designed to complement the existing landscape. Architectural resources were clustered in areas set aside for recreation, camping, and park administration, while the vast majority of the park was set aside for forests and wildlife clearings. Furthermore, since the 1930s, the park's woodlands and landscape have been managed according to the forestry and conservation principles that evolved from the CCC's work.

Watoga State Park conveys its historical associations and significance due to its high level of integrity. The park's New Deal historic resources retain integrity of design, location, setting, feeling, workmanship, materials, and association. When historic resources have been updated, historic configurations and materials were respected to the greatest extent possible. Character defining elements

United States Department of the Interior
National Park Service

National Register of Historic Places
Continuation Sheet

Section number 8 Page 31

New Deal Resources in Watoga State Park
Historic District

Name of Property

Pocahontas County, West Virginia

County and State

New Deal Resources in West Virginia State
Parks and Forests

Name of multiple listing (if applicable)

remain as-built and still relate to the establishment of the park and the role the CCC played in that establishment. Watoga State Park remains true to its original plan and function as a recreational destination.

New Deal Resources in Watoga State Park

Name of Property

Pocahontas County, WV

County and State

9. Major Bibliographical References

Bibliography (Cite the books, articles, and other sources used in preparing this form.)

See Continuation Sheets

Previous documentation on file (NPS):

☐ preliminary determination of individual listing (36 CFR 67 has been requested)
☐ previously listed in the National Register
☐ previously determined eligible by the National Register
☐ designated a National Historic Landmark
☐ recorded by Historic American Buildings Survey # _____
☐ recorded by Historic American Engineering Record # _____
☐ recorded by Historic American Landscape Survey # _____

Primary location of additional data:

☒ State Historic Preservation Office
☐ Other State agency
☐ Federal agency
☐ Local government
☐ University
☐ Other
Name of repository: _____

Historic Resources Survey Number (if assigned): _____

10. Geographical Data

Acreage of Property 10,269

(Do not include previously listed resource acreage.)

UTM References

(Place additional UTM references on a continuation sheet.)

A 17 580187 4221222
Zone Easting Northing

C 17 567650 4216015
Zone Easting Northing

B 17 578580 4212530
Zone Easting Northing

D 17 571701 4220810
Zone Easting Northing

Verbal Boundary Description (Describe the boundaries of the property.)

See Continuation Sheets.

Boundary Justification (Explain why the boundaries were selected.)

See Continuation Sheets.

United States Department of the Interior
National Park Service

National Register of Historic Places
Continuation Sheet

Section number 9 Page 32

New Deal Resources in Watoga State Park
 Historic District

Name of Property
 Pocahontas County, West Virginia

County and State
 New Deal Resources in West Virginia State
 Parks and Forests

Name of multiple listing (if applicable)

Major Bibliographical References

Beanblossom, Robert

2010 Personal communication to Lena Sweeten, 27 May 2010.

Gioulis, Michael, Historic Preservation Consultant

2008 *New Deal Historic Resource Survey*. Prepared for the West Virginia Division of Culture and History, Charleston, West Virginia.

Harr, Milton

1992 *The C.C.C. Camps in West Virginia: A Record of the Civilian Conservation Corps in the Mountain State, 1933-1942*. Milton Harr, Charleston, West Virginia.

Sweeten, Lena L.

2010 New Deal Resources in West Virginia State Parks and Forests Multiple Property Documentation Form. Prepared for West Virginia Division of Culture and History, Charleston.

DRAWINGS AND PLANS

Department of the Interior National Park Service and West Virginia State Conservation Commission Cooperating

1935 *Watoga State Park Location and Plot Plan – Camp Seebert, S.P. 1 and Cabins 1, 2, and 3*. Drawn by E. L. Belladonna. April 8, 1935.

1937 *Watoga State Park Base Map*. Drawn by H. Y. Merkin and C. A. Gaus. March 19, 1937.

1935 *Watoga State Park Over-night Cabins No. 4-13 – Plans – Elevations and Details*. October 30, 1935.

United States Department of the Interior National Park Service Cooperating with West Virginia Conservation Commission

1938 *Watoga State Park Over-night Cabins No. 23 & 29*. Drawn by R. H. Daley and R.L.A. September 23, 1938.

United States Department of the Interior
National Park Service

National Register of Historic Places
Continuation Sheet

Section number 10 Page 33

New Deal Resources in Watoga State Park
 Historic District

Name of Property

Pocahontas County, West Virginia

County and State

New Deal Resources in West Virginia State
 Parks and Forests

Name of multiple listing (if applicable)

Verbal Boundary Description

The historic district boundaries begin at a point approximately 1,000 feet northwest of the intersection of Pocahontas County Route 21 and Pocahontas County Route 21-4. The boundary proceeds south for a distance of approximately 2,000 feet, then turns southeast to follow Pocahontas County Route 21. After 500 feet the boundary proceeds southwest for a distance of approximately 1,000 feet, then turns southeast to proceed approximately 800 feet to turn southeast for approximately 600 feet. The boundary then turns northwest and extends approximately 300 feet, then follows the course of an unnamed stream back to the terminus of Pocahontas County Route 21. The boundary then extends southwest, following the legal boundary of the park land to Laurel Run. It turns southwest for approximately 1,200 feet then proceeds northwest for approximately 4,500 feet. The boundary turns southwest to follow the park's legal boundary for a distance of approximately 1,500 feet, then proceeds southwest a distance of 2,200 feet to coincide with Laurel Run. After following Laurel Run for approximately 1,600 feet, the boundary heads south approximately 4,000 feet, then turns northwest to extend another 3,500 feet. The boundary line jogs north a distance of approximately 800 feet to reunite with Laurel Run. Proceeding on a generally northeasterly course, the boundary follows Laurel Run until the stream meets the Greenbrier River. The boundary follows the Greenbrier River north for a distance of approximately 1,500 feet, then turns northeast, away from the river, for a distance of approximately 4,000 feet. It turns northeast for 800 feet, then the boundary proceeds southeast for 1,000 feet, and turns again to the east/northeast for approximately 2,400 feet. The boundary next extends north/northeast for approximately 800 feet, then turns northeast again approximately 1,500 feet to meet again with the Greenbrier River. The historic boundary follows the Greenbrier River's course on a generally easterly then northeasterly direction. Upon crossing Pocahontas County Route 27-3, the historic boundary proceeds away from the river and north, approximately 1,000 feet. The boundary then curves southeast and extends another 1,000 feet, turns northeast to extend approximately 500 feet, turns southeast another 500 feet, and northeast again for another approximately 1,800 feet. Following the park's legal boundary, the historic boundary then continues in a generally southeasterly direction for approximately 6,500 feet, then turns northeast for approximately 1,600 feet. The boundary then continues in a generally northeasterly direction for approximately 1,500 feet before turning southeast for a distance of roughly 1,000 feet. The boundary then turns northeast for a distance of approximately 2,400 feet. The boundary proceeds directly east approximately 1,200 feet, turns north to extend 500 feet, then east/southeast for 500 feet. It turns northeast again to extend approximately 1,000 feet and then turns southeast to extend approximately 1,800 feet. The boundary then proceeds in a generally southeasterly direction, following the park's legal boundary for approximately 5,500 feet. The boundary next turns south to go approximately 1,000 feet before turning sharply west to extend approximately 1,400 feet. The boundary then turns south again to run about 250 feet, turns east for 500 feet, and then continues in a generally southerly direction for approximately 1,250 feet. The boundary then extends in a generally westerly direction for approximately 1,500 feet, turns southwest to run about 600 feet, then extends southeast for approximately 400 feet to coincide with Pocahontas County Route 27-3. The boundary then turns southeast to follow the road approximately 750 feet, and thus returns to the point of beginning. The historic boundaries as described coincide with the park's legal boundaries in their entirety.

Boundary Justification

The historic district boundary encompasses the entirety of the state park, which was established, designed, and landscaped during the New Deal period. Both its historic architectural resources and the park's managed landscape have maintained their original functions since that time. The park is an excellent, representative example of New Deal-era architectural and landscape design as well as landscape planning and management.

New Deal Resources in Watoga State Park
Name of Property

Pocahontas County, WV
County and State

11. Form Prepared By

name/title Lena L. Sweeten, Senior Principal Investigator

organization Gray & Pape, Inc.

date 1 July 2010

street & number 100 W. Franklin Street, Suite 102

telephone 804-644-0656

city or town Richmond

state VA

zip code 23236

e-mail lsweeten@graypape.com

Additional Documentation

Submit the following items with the completed form:

- **Maps:** A **USGS map** (7.5 or 15 minute series) indicating the property's location.

A **Sketch map** for historic districts and properties having large acreage or numerous resources. Key all photographs to this map.
- **Continuation Sheets**
- **Additional items:** (Check with the SHPO or FPO for any additional items.)

Photographs:

Submit clear and descriptive photographs. The size of each image must be 1600x1200 pixels at 300 ppi (pixels per inch) or larger. Key all photographs to the sketch map.

(see continuation sheet)

Property Owner:

(Complete this item at the request of the SHPO or FPO.)

name _____

street & number _____ telephone _____

city or town _____ state _____ zip code _____

Paperwork Reduction Act Statement: This information is being collected for applications to the National Register of Historic Places to nominate properties for listing or determine eligibility for listing, to list properties, and to amend existing listings. Response to this request is required to obtain a benefit in accordance with the National Historic Preservation Act, as amended (16 U.S.C.460 et seq.).

Estimated Burden Statement: Public reporting burden for this form is estimated to average 18 hours per response including time for reviewing instructions, gathering and maintaining data, and completing and reviewing the form. Direct comments regarding this burden estimate or any aspect of this form to the Office of Planning and Performance Management, U.S. Dept. of the Interior, 1849 C. Street, NW, Washington, DC.

United States Department of the Interior
National Park Service

National Register of Historic Places
Continuation Sheet

Section number Figures Page 34

New Deal Resources in Watoga State Park
 Historic District

Name of Property

Pocahontas County, West Virginia

County and State

New Deal Resources in West Virginia State
 Parks and Forests

Name of multiple listing (if applicable)

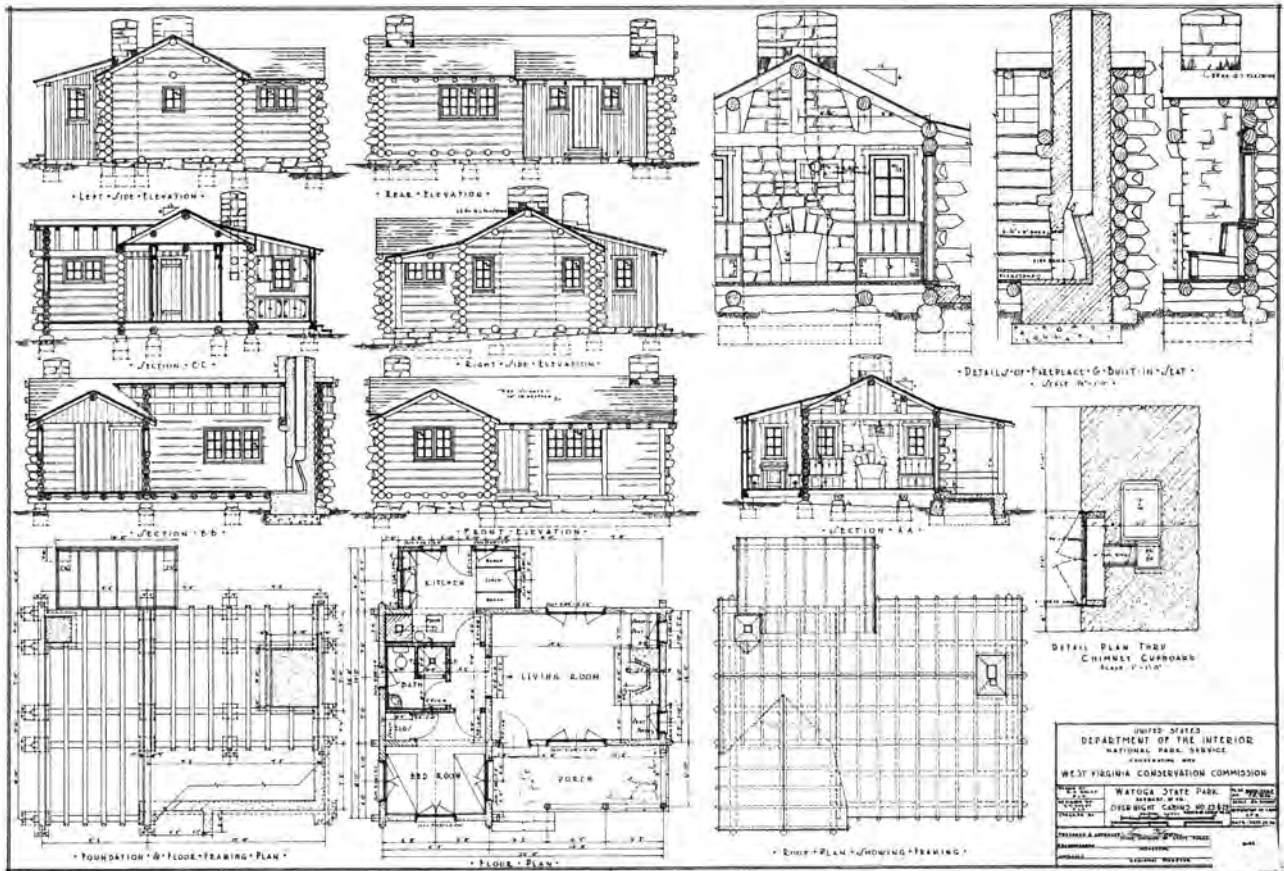


Figure 1. *Watoga State Park Over-night Cabins No. 23 & 29* (United States Department of the Interior National Park Service Cooperating with West Virginia Conservation Commission, September 23, 1938).

United States Department of the Interior
National Park Service

National Register of Historic Places
Continuation Sheet

Section number Figures Page 35

New Deal Resources in Watoga State Park
 Historic District

Name of Property

Pocahontas County, West Virginia

County and State

New Deal Resources in West Virginia State
 Parks and Forests

Name of multiple listing (if applicable)

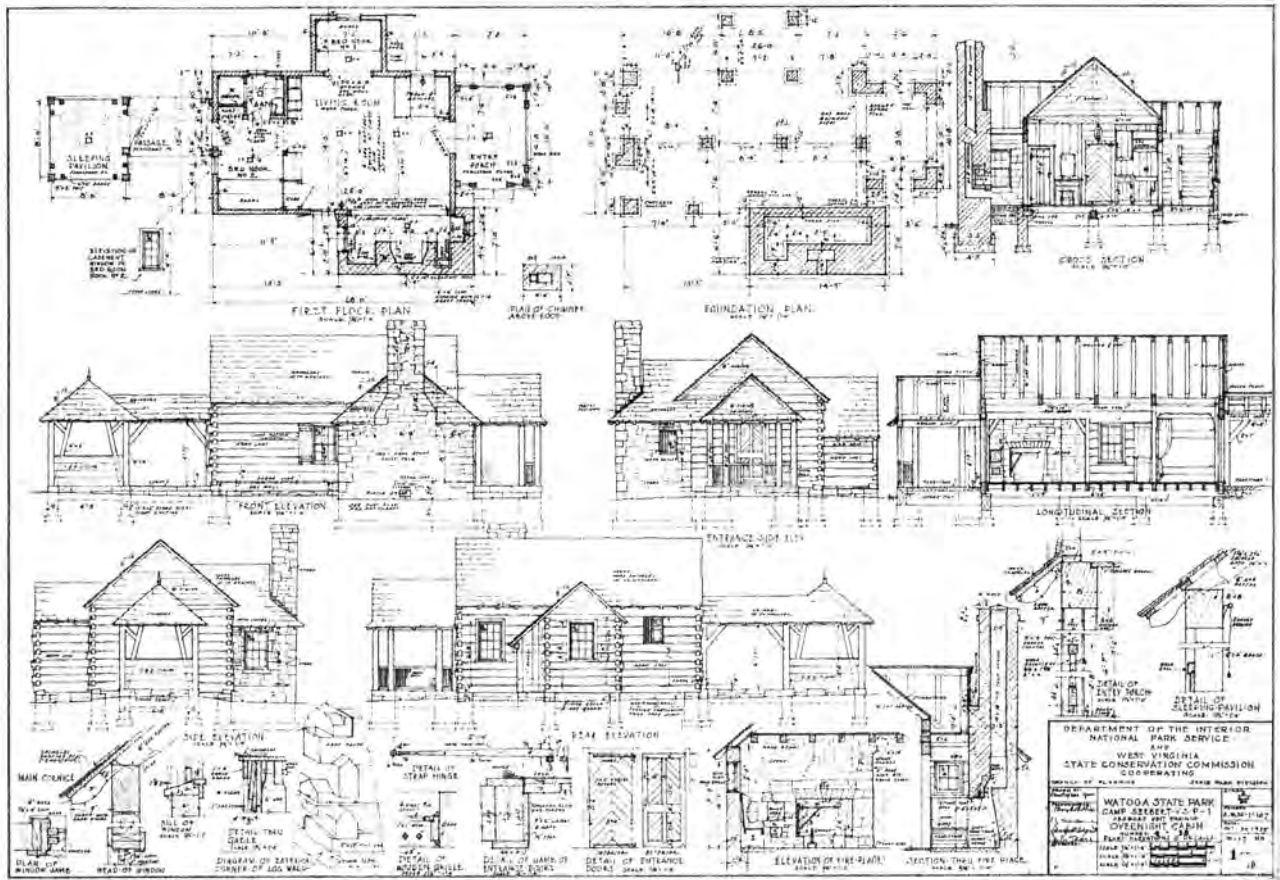


Figure 2. *Watoga State Park Over-night Cabins No. 4-13 – Plans – Elevations and Details* (Department of the Interior National Park Service and West Virginia State Conservation Commission Cooperating, October 30, 1935).

United States Department of the Interior
National Park Service

National Register of Historic Places
Continuation Sheet

Section number Figures Page 36

New Deal Resources in Watoga State Park
Historic District

Name of Property

Pocahontas County, West Virginia

County and State

New Deal Resources in West Virginia State
Parks and Forests

Name of multiple listing (if applicable)

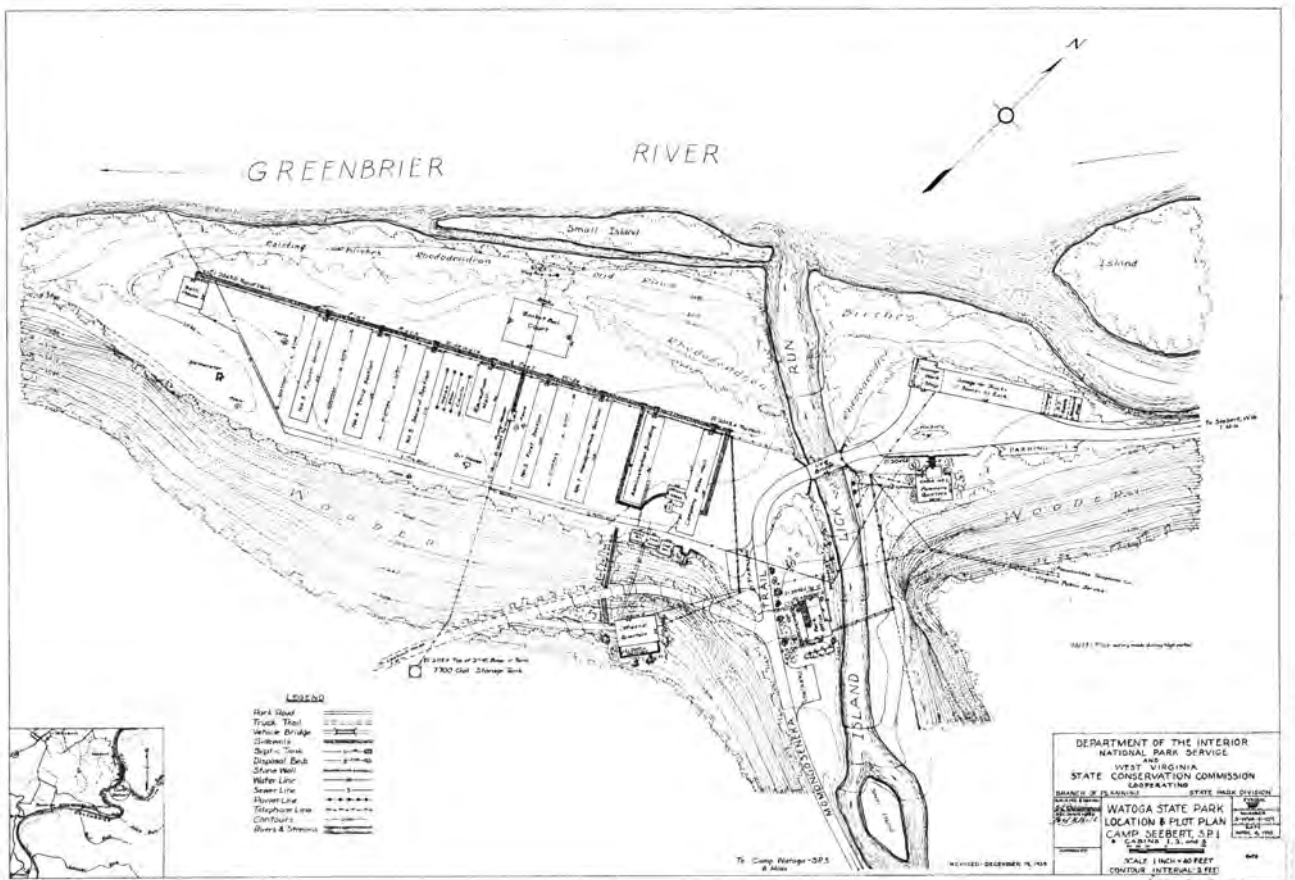


Figure 3. *Watoga State Park Location and Plot Plan – Camp Seebert, S.P. 1 and Cabins 1, 2, and 3* (Department of the Interior National Park Service and West Virginia State Conservation Commission Cooperating, April 8, 1935).

United States Department of the Interior
National Park Service

National Register of Historic Places
Continuation Sheet

Section number Figures Page 37

New Deal Resources in Watoga State Park
 Historic District

Name of Property

Pocahontas County, West Virginia

County and State

New Deal Resources in West Virginia State
 Parks and Forests

Name of multiple listing (if applicable)

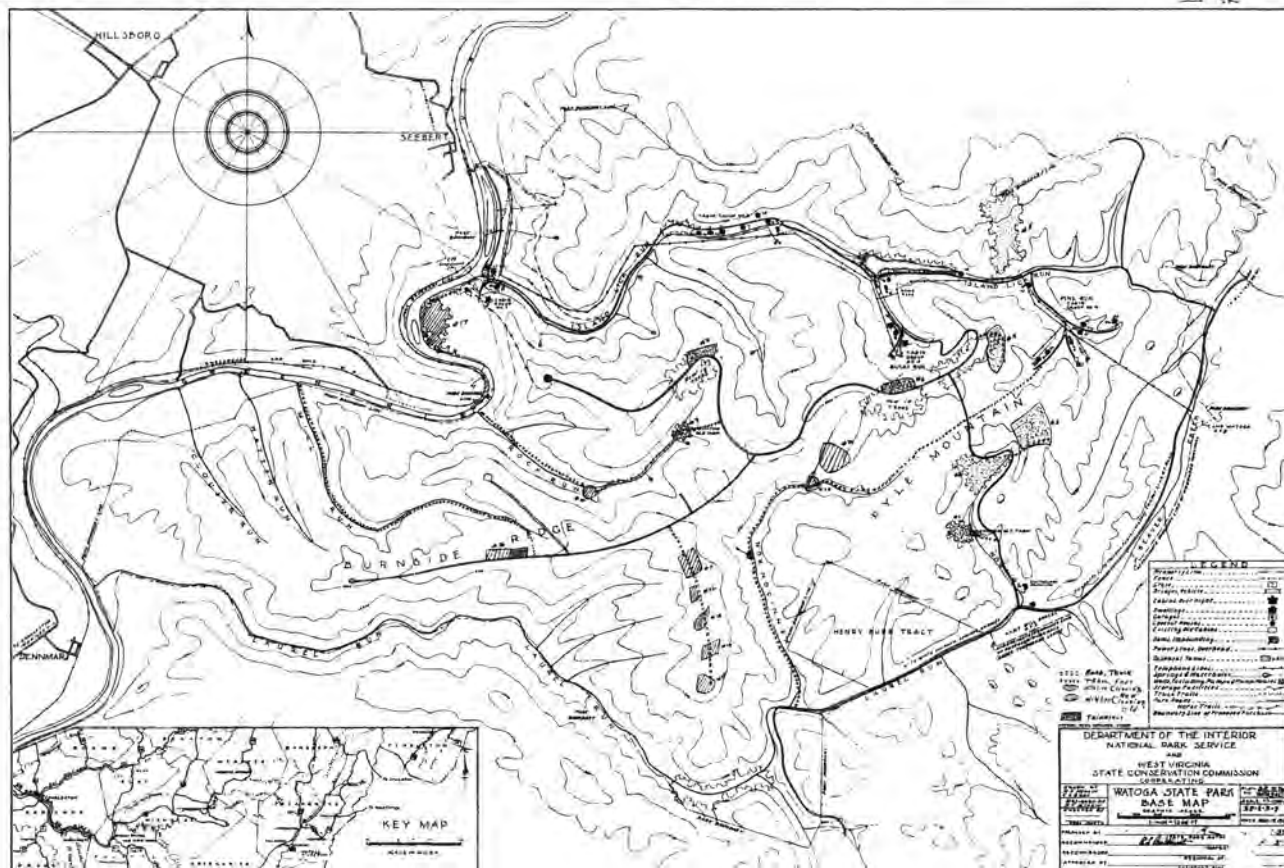


Figure 4. *Watoga State Park Base Map* (Department of the Interior National Park Service and West Virginia State Conservation Commission Cooperating, March 19, 1937).

**United States Department of the Interior
National Park Service**

**National Register of Historic Places
Continuation Sheet**

New Deal Resources in Watoga State Park
Historic District

Name of Property

Pocahontas County, West Virginia

County and State

New Deal Resources in West Virginia State
Parks and Forests

Name of multiple listing (if applicable)

Section number PHOTOGRAPHS Page 38

Photographs (continued)

Name of Property: New Deal Resources in Watoga State Park Historic District

City or Vicinity: Marlinton

County: Pocahontas

State: West Virginia

Photographer: Lena Sweeten

Date Photographed: June 2010

Description of Photograph(s) and number:

Representative view along County Route 27-3, camera facing northwest
1 of 78

Name of Property: New Deal Resources in Watoga State Park Historic District

City or Vicinity: Marlinton

County: Pocahontas

State: West Virginia

Photographer: Lena Sweeten

Date Photographed: June 2010

Description of Photograph(s) and number:

Representative view along Fire Road 819, camera facing northeast
2 of 78

Name of Property: New Deal Resources in Watoga State Park Historic District

City or Vicinity: Marlinton

County: Pocahontas

State: West Virginia

Photographer: Lena Sweeten

Date Photographed: June 2010

Description of Photograph(s) and number:

Representative view along Fire Road 819 and adjacent Honeymoon Trail, camera facing southeast
3 of 78

Name of Property: New Deal Resources in Watoga State Park Historic District

City or Vicinity: Marlinton

County: Pocahontas

State: West Virginia

Photographer: Lena Sweeten

Date Photographed: June 2010

Description of Photograph(s) and number:

Representative view of County Route 27-3 adjacent to Island Lick Run, camera facing west
4 of 78

Name of Property: New Deal Resources in Watoga State Park Historic District

City or Vicinity: Marlinton

County: Pocahontas

State: West Virginia

Photographer: Lena Sweeten

Date Photographed: June 2010

Description of Photograph(s) and number:

Representative view of a footbridge across Two Mile Run, camera facing southwest
5 of 78

**United States Department of the Interior
National Park Service**

**National Register of Historic Places
Continuation Sheet**

Section number PHOTOGRAPHS Page 39

New Deal Resources in Watoga State Park
Historic District

Name of Property
Pocahontas County, West Virginia

County and State
New Deal Resources in West Virginia State
Parks and Forests

Name of multiple listing (if applicable)

Name of Property: New Deal Resources in Watoga State Park Historic District

City or Vicinity: Marlinton

County: Pocahontas

State: West Virginia

Photographer: Lena Sweeten

Date Photographed: June 2010

Description of Photograph(s) and number:

Stone retaining wall, trail signage, and footbridge along Dragon Draft Trail, camera facing southwest

6 of 78

Name of Property: New Deal Resources in Watoga State Park Historic District

City or Vicinity: Marlinton

County: Pocahontas

State: West Virginia

Photographer: Lena Sweeten

Date Photographed: June 2010

Description of Photograph(s) and number:

Representative view of spatial relationships showing stone-lined parking lot, bathhouse, and swimming pool, camera facing southwest

7 of 78

Name of Property: New Deal Resources in Watoga State Park Historic District

City or Vicinity: Marlinton

County: Pocahontas

State: West Virginia

Photographer: Lena Sweeten

Date Photographed: June 2010

Description of Photograph(s) and number:

Representative view of stone steps and landscaping in rental cabins area, camera facing southwest

8 of 78

Name of Property: New Deal Resources in Watoga State Park Historic District

City or Vicinity: Marlinton

County: Pocahontas

State: West Virginia

Photographer: Lena Sweeten

Date Photographed: June 2010

Description of Photograph(s) and number:

Representative view of spatial relationships among road, cabin, woodshed, and landscaping, camera facing south

9 of 78

Name of Property: New Deal Resources in Watoga State Park Historic District

City or Vicinity: Marlinton

County: Pocahontas

State: West Virginia

Photographer: Lena Sweeten

Date Photographed: June 2010

**United States Department of the Interior
National Park Service**

**National Register of Historic Places
Continuation Sheet**

Section number PHOTOGRAPHS Page 40

New Deal Resources in Watoga State Park Historic District
Name of Property Pocahontas County, West Virginia
County and State New Deal Resources in West Virginia State Parks and Forests
Name of multiple listing (if applicable)

Description of Photograph(s) and number:

**Representative view of cabin siting, stonework, and landscaping, camera facing northeast
10 of 78**

Name of Property: New Deal Resources in Watoga State Park Historic District

City or Vicinity: Marlinton

County: Pocahontas

State: West Virginia

Photographer: Lena Sweeten

Date Photographed: June 2010

Description of Photograph(s) and number:

**Representative view along Riverside Campground road spur, camera facing northeast
11 of 78**

Name of Property: New Deal Resources in Watoga State Park Historic District

City or Vicinity: Marlinton

County: Pocahontas

State: West Virginia

Photographer: Michael Gioulis, Historic Preservation Consultant

Date Photographed: July 2008

Description of Photograph(s) and number:

**Representative view along County Route 27-3 with historic stone retaining wall and newer
stone pillar and wooden guardrail, camera facing southwest
12 of 78**

Name of Property: New Deal Resources in Watoga State Park Historic District

City or Vicinity: Marlinton

County: Pocahontas

State: West Virginia

Photographer: Lena Sweeten

Date Photographed: June 2010

Description of Photograph(s) and number:

**Representative view of County Route 27-3/Park Road 819 intersection at south entrance,
camera facing north/northeast
13 of 78**

Name of Property: New Deal Resources in Watoga State Park Historic District

City or Vicinity: Marlinton

County: Pocahontas

State: West Virginia

Photographer: Lena Sweeten

Date Photographed: June 2010

Description of Photograph(s) and number:

**Representative view along County Route 27-3 at river entrance, camera facing south
14 of 78**

Name of Property: New Deal Resources in Watoga State Park Historic District

City or Vicinity: Marlinton

County: Pocahontas

State: West Virginia

Photographer: Michael Gioulis, Historic Preservation Consultant

**United States Department of the Interior
National Park Service**

**National Register of Historic Places
Continuation Sheet**

Section number PHOTOGRAPHS Page 41

New Deal Resources in Watoga State Park Historic District
Name of Property Pocahontas County, West Virginia
County and State New Deal Resources in West Virginia State Parks and Forests
Name of multiple listing (if applicable)

Date Photographed: July 2008

Description of Photograph(s) and number:

**Representative view of reconstructed stone culvert on County Route 27-3, camera facing west
15 of 78**

Name of Property: New Deal Resources in Watoga State Park Historic District

City or Vicinity: Marlinton

County: Pocahontas

State: West Virginia

Photographer: Michael Gioulis, Historic Preservation Consultant

Date Photographed: July 2008

Description of Photograph(s) and number:

**Vehicular bridge along County Route 27-3, camera facing northeast
16 of 78**

Name of Property: New Deal Resources in Watoga State Park Historic District

City or Vicinity: Marlinton

County: Pocahontas

State: West Virginia

Photographer: Michael Gioulis, Historic Preservation Consultant

Date Photographed: July 2008

Description of Photograph(s) and number:

**Vehicular bridge along County Route 27-3, camera facing north/northwest
17 of 78**

Name of Property: New Deal Resources in Watoga State Park Historic District

City or Vicinity: Marlinton

County: Pocahontas

State: West Virginia

Photographer: Lena Sweeten

Date Photographed: June 2010

Description of Photograph(s) and number:

**Stone signage example at Brooks Arboretum entrance, camera facing south
18 of 78**

Name of Property: New Deal Resources in Watoga State Park Historic District

City or Vicinity: Marlinton

County: Pocahontas

State: West Virginia

Photographer: Lena Sweeten

Date Photographed: June 2010

Description of Photograph(s) and number:

**Stone steps example with in Brooks Arboretum, camera facing east
19 of 78**

Name of Property: New Deal Resources in Watoga State Park Historic District

City or Vicinity: Marlinton

County: Pocahontas

State: West Virginia

Photographer: Michael Gioulis, Historic Preservation Consultant

Date Photographed: July 2008

**United States Department of the Interior
National Park Service**

**National Register of Historic Places
Continuation Sheet**

New Deal Resources in Watoga State Park Historic District
Name of Property Pocahontas County, West Virginia
County and State New Deal Resources in West Virginia State Parks and Forests
Name of multiple listing (if applicable)

Section number PHOTOGRAPHS Page 42

Description of Photograph(s) and number:

Stone retaining wall along Island Lick Run and County Route 27-3, camera facing northeast
20 of 78

Name of Property: New Deal Resources in Watoga State Park Historic District

City or Vicinity: Marlinton

County: Pocahontas

State: West Virginia

Photographer: Lena Sweeten

Date Photographed: June 2010

Description of Photograph(s) and number:

Stone retaining wall along Island Lick Run and County Route 27-3, camera facing northwest
21 of 78

Name of Property: New Deal Resources in Watoga State Park Historic District

City or Vicinity: Marlinton

County: Pocahontas

State: West Virginia

Photographer: Lena Sweeten

Date Photographed: June 2010

Description of Photograph(s) and number:

Stone retaining wall near Cabin no. 34, camera facing northeast
22 of 78

Name of Property: New Deal Resources in Watoga State Park Historic District

City or Vicinity: Marlinton

County: Pocahontas

State: West Virginia

Photographer: Lena Sweeten

Date Photographed: June 2010

Description of Photograph(s) and number:

Laurel Trail, camera facing west
23 of 78

Name of Property: New Deal Resources in Watoga State Park Historic District

City or Vicinity: Marlinton

County: Pocahontas

State: West Virginia

Photographer: Lena Sweeten

Date Photographed: June 2010

Description of Photograph(s) and number:

Allegheny Trail, camera facing south
24 of 78

Name of Property: New Deal Resources in Watoga State Park Historic District

City or Vicinity: Marlinton

County: Pocahontas

State: West Virginia

Photographer: Lena Sweeten

Date Photographed: June 2010

Description of Photograph(s) and number:

**United States Department of the Interior
National Park Service**

**National Register of Historic Places
Continuation Sheet**

New Deal Resources in Watoga State Park Historic District
Name of Property Pocahontas County, West Virginia
County and State New Deal Resources in West Virginia State Parks and Forests
Name of multiple listing (if applicable)

Section number PHOTOGRAPHS Page 44

30 of 78

Name of Property: New Deal Resources in Watoga State Park Historic District
City or Vicinity: Marlinton
County: Pocahontas **State:** West Virginia
Photographer: Michael Gioulis, Historic Preservation Consultant
Date Photographed: July 2008
Description of Photograph(s) and number:
Stable area pump house, camera facing northeast
31 of 78

Name of Property: New Deal Resources in Watoga State Park Historic District
City or Vicinity: Marlinton
County: Pocahontas **State:** West Virginia
Photographer: Michael Gioulis, Historic Preservation Consultant
Date Photographed: July 2008
Description of Photograph(s) and number:
Pine Run pump house, camera facing northeast
32 of 78

Name of Property: New Deal Resources in Watoga State Park Historic District
City or Vicinity: Marlinton
County: Pocahontas **State:** West Virginia
Photographer: Michael Gioulis, Historic Preservation Consultant
Date Photographed: July 2008
Description of Photograph(s) and number:
Cabin no. 21, camera facing southwest
33 of 78

Name of Property: New Deal Resources in Watoga State Park Historic District
City or Vicinity: Marlinton
County: Pocahontas **State:** West Virginia
Photographer: Michael Gioulis, Historic Preservation Consultant
Date Photographed: July 2008
Description of Photograph(s) and number:
Cabin no. 21, camera facing north
34 of 78

Name of Property: New Deal Resources in Watoga State Park Historic District
City or Vicinity: Marlinton
County: Pocahontas **State:** West Virginia
Photographer: Michael Gioulis, Historic Preservation Consultant
Date Photographed: July 2008
Description of Photograph(s) and number:
Cabin no. 23, camera facing southwest
35 of 78

**United States Department of the Interior
National Park Service**

**National Register of Historic Places
Continuation Sheet**

Section number PHOTOGRAPHS Page 45

New Deal Resources in Watoga State Park Historic District
Name of Property Pocahontas County, West Virginia
County and State New Deal Resources in West Virginia State Parks and Forests
Name of multiple listing (if applicable)

Name of Property: New Deal Resources in Watoga State Park Historic District
City or Vicinity: Marlinton
County: Pocahontas **State:** West Virginia
Photographer: Michael Gioulis, Historic Preservation Consultant
Date Photographed: July 2008
Description of Photograph(s) and number:
Wood shed near cabin no. 23, camera facing southwest
36 of 78

Name of Property: New Deal Resources in Watoga State Park Historic District
City or Vicinity: Marlinton
County: Pocahontas **State:** West Virginia
Photographer: Michael Gioulis, Historic Preservation Consultant
Date Photographed: July 2008
Description of Photograph(s) and number:
Cabin no. 29, camera facing northeast
37 of 78

Name of Property: New Deal Resources in Watoga State Park Historic District
City or Vicinity: Marlinton
County: Pocahontas **State:** West Virginia
Photographer: Michael Gioulis, Historic Preservation Consultant
Date Photographed: July 2008
Description of Photograph(s) and number:
Cabin no. 32, camera facing north/northeast
38 of 78

Name of Property: New Deal Resources in Watoga State Park Historic District
City or Vicinity: Marlinton
County: Pocahontas **State:** West Virginia
Photographer: Michael Gioulis, Historic Preservation Consultant
Date Photographed: July 2008
Description of Photograph(s) and number:
Supply house, camera facing northwest
39 of 78

Name of Property: New Deal Resources in Watoga State Park Historic District
City or Vicinity: Marlinton
County: Pocahontas **State:** West Virginia
Photographer: Michael Gioulis, Historic Preservation Consultant
Date Photographed: July 2008
Description of Photograph(s) and number:
Swimming pool, camera facing northeast
40 of 78

**United States Department of the Interior
National Park Service**

**National Register of Historic Places
Continuation Sheet**

Section number PHOTOGRAPHS Page 46

New Deal Resources in Watoga State Park
Historic District

Name of Property

Pocahontas County, West Virginia

County and State

New Deal Resources in West Virginia State
Parks and Forests

Name of multiple listing (if applicable)

Name of Property: New Deal Resources in Watoga State Park Historic District

City or Vicinity: Marlinton

County: Pocahontas

State: West Virginia

Photographer: Michael Gioulis, Historic Preservation Consultant

Date Photographed: July 2008

Description of Photograph(s) and number:

Bathhouse, camera facing northeast

41 of 78

Name of Property: New Deal Resources in Watoga State Park Historic District

City or Vicinity: Marlinton

County: Pocahontas

State: West Virginia

Photographer: Michael Gioulis, Historic Preservation Consultant

Date Photographed: July 2008

Description of Photograph(s) and number:

CCC Museum/restroom building, camera facing northwest

42 of 78

Name of Property: New Deal Resources in Watoga State Park Historic District

City or Vicinity: Marlinton

County: Pocahontas

State: West Virginia

Photographer: Michael Gioulis, Historic Preservation Consultant

Date Photographed: July 2008

Description of Photograph(s) and number:

Cabin no. 20, camera facing south

43 of 78

Name of Property: New Deal Resources in Watoga State Park Historic District

City or Vicinity: Marlinton

County: Pocahontas

State: West Virginia

Photographer: Michael Gioulis, Historic Preservation Consultant

Date Photographed: July 2008

Description of Photograph(s) and number:

Cabin no. 20, camera facing north

44 of 78

Name of Property: New Deal Resources in Watoga State Park Historic District

City or Vicinity: Marlinton

County: Pocahontas

State: West Virginia

Photographer: Lena Sweeten

Date Photographed: June 2010

Description of Photograph(s) and number:

Watoga Lake, camera facing east/northeast

45 of 78

Name of Property: New Deal Resources in Watoga State Park Historic District

**United States Department of the Interior
National Park Service**

**National Register of Historic Places
Continuation Sheet**

Section number PHOTOGRAPHS Page 47

New Deal Resources in Watoga State Park
Historic District

Name of Property
Pocahontas County, West Virginia

County and State
New Deal Resources in West Virginia State
Parks and Forests

Name of multiple listing (if applicable)

City or Vicinity: Marlinton
County: Pocahontas State: West Virginia
Photographer: Michael Gioulis, Historic Preservation Consultant
Date Photographed: July 2008
Description of Photograph(s) and number:
Dam across Island Lick Run, camera facing northeast
46 of 78

Name of Property: New Deal Resources in Watoga State Park Historic District
City or Vicinity: Marlinton
County: Pocahontas State: West Virginia
Photographer: Lena Sweeten
Date Photographed: June 2010
Description of Photograph(s) and number:
Dam across Island Lick Run, camera facing north
47 of 78

Name of Property: New Deal Resources in Watoga State Park Historic District
City or Vicinity: Marlinton
County: Pocahontas State: West Virginia
Photographer: Lena Sweeten
Date Photographed: June 2010
Description of Photograph(s) and number:
Dam across Island Lick Run, camera facing northeast
48 of 78

Name of Property: New Deal Resources in Watoga State Park Historic District
City or Vicinity: Marlinton
County: Pocahontas State: West Virginia
Photographer: Michael Gioulis, Historic Preservation Consultant
Date Photographed: July 2008
Description of Photograph(s) and number:
Park office headquarters and restaurant, camera facing north
49 of 78

Name of Property: New Deal Resources in Watoga State Park Historic District
City or Vicinity: Marlinton
County: Pocahontas State: West Virginia
Photographer: Michael Gioulis, Historic Preservation Consultant
Date Photographed: July 2008
Description of Photograph(s) and number:
Bucks Run pump house, camera facing southwest
50 of 78

Name of Property: New Deal Resources in Watoga State Park Historic District
City or Vicinity: Marlinton

**United States Department of the Interior
National Park Service**

**National Register of Historic Places
Continuation Sheet**

Section number PHOTOGRAPHS Page 48

New Deal Resources in Watoga State Park
Historic District

Name of Property
Pocahontas County, West Virginia

County and State
New Deal Resources in West Virginia State
Parks and Forests

Name of multiple listing (if applicable)

County: Pocahontas State: West Virginia
Photographer: Michael Gioulis, Historic Preservation Consultant
Date Photographed: July 2008
Description of Photograph(s) and number:
Cabin no. 13, camera facing southwest
51 of 78

Name of Property: New Deal Resources in Watoga State Park Historic District
City or Vicinity: Marlinton
County: Pocahontas State: West Virginia
Photographer: Lena Sweeten
Date Photographed: June 2010
Description of Photograph(s) and number:
T. M. Cheek Memorial Overlook along Fire Road 819, camera facing northwest
52 of 78

Name of Property: New Deal Resources in Watoga State Park Historic District
City or Vicinity: Marlinton
County: Pocahontas State: West Virginia
Photographer: Lena Sweeten
Date Photographed: June 2010
Description of Photograph(s) and number:
View from the T. M. Cheek Memorial Overlook, camera facing west
53 of 78

Name of Property: New Deal Resources in Watoga State Park Historic District
City or Vicinity: Marlinton
County: Pocahontas State: West Virginia
Photographer: Michael Gioulis, Historic Preservation Consultant
Date Photographed: July 2008
Description of Photograph(s) and number:
Island Lick pump house, camera facing southwest
54 of 78

Name of Property: New Deal Resources in Watoga State Park Historic District
City or Vicinity: Marlinton
County: Pocahontas State: West Virginia
Photographer: Michael Gioulis, Historic Preservation Consultant
Date Photographed: July 2008
Description of Photograph(s) and number:
Cabin no. 11, camera facing southwest
55 of 78

Name of Property: New Deal Resources in Watoga State Park Historic District
City or Vicinity: Marlinton
County: Pocahontas State: West Virginia

**United States Department of the Interior
National Park Service**

**National Register of Historic Places
Continuation Sheet**

Section number PHOTOGRAPHS Page 49

New Deal Resources in Watoga State Park
Historic District

Name of Property

Pocahontas County, West Virginia

County and State

New Deal Resources in West Virginia State
Parks and Forests

Name of multiple listing (if applicable)

Photographer: Michael Gioulis, Historic Preservation Consultant

Date Photographed: July 2008

Description of Photograph(s) and number:

Cabin no. 7, camera facing south

56 of 78

Name of Property: New Deal Resources in Watoga State Park Historic District

City or Vicinity: Marlinton

County: Pocahontas

State: West Virginia

Photographer: Michael Gioulis, Historic Preservation Consultant

Date Photographed: July 2008

Description of Photograph(s) and number:

Cabin no. 4, camera facing west/southwest

57 of 78

Name of Property: New Deal Resources in Watoga State Park Historic District

City or Vicinity: Marlinton

County: Pocahontas

State: West Virginia

Photographer: Lena Sweeten

Date Photographed: June 2010

Description of Photograph(s) and number:

Footbridge and vegetation along Dragon Draft Trail within Brooks Arboretum, camera facing southeast

58 of 78

Name of Property: New Deal Resources in Watoga State Park Historic District

City or Vicinity: Marlinton

County: Pocahontas

State: West Virginia

Photographer: Lena Sweeten

Date Photographed: June 2010

Description of Photograph(s) and number:

Vegetation along Dragon Draft Trail within Brooks Arboretum, camera facing east/southeast

59 of 78

Name of Property: New Deal Resources in Watoga State Park Historic District

City or Vicinity: Marlinton

County: Pocahontas

State: West Virginia

Photographer: Lena Sweeten

Date Photographed: June 2010

Description of Photograph(s) and number:

Representative educational signage along Dragon Draft Trail within Brooks Arboretum, camera facing southeast

60 of 78

Name of Property: New Deal Resources in Watoga State Park Historic District

City or Vicinity: Marlinton

**United States Department of the Interior
National Park Service**

**National Register of Historic Places
Continuation Sheet**

Section number PHOTOGRAPHS Page 50

New Deal Resources in Watoga State Park Historic District
Name of Property Pocahontas County, West Virginia
County and State New Deal Resources in West Virginia State Parks and Forests
Name of multiple listing (if applicable)

County: Pocahontas **State:** West Virginia
Photographer: Michael Gioulis, Historic Preservation Consultant
Date Photographed: July 2008
Description of Photograph(s) and number:
Foot bridge, stone column, and stone sign column at entry to Brooks Arboretum, camera facing south/southwest
61 of 78

Name of Property: New Deal Resources in Watoga State Park Historic District
City or Vicinity: Marlinton
County: Pocahontas **State:** West Virginia
Photographer: Michael Gioulis, Historic Preservation Consultant
Date Photographed: July 2008
Description of Photograph(s) and number:
Dragon Draft trail shelter, camera facing north/northeast
62 of 78

Name of Property: New Deal Resources in Watoga State Park Historic District
City or Vicinity: Marlinton
County: Pocahontas **State:** West Virginia
Photographer: Michael Gioulis, Historic Preservation Consultant
Date Photographed: July 2008
Description of Photograph(s) and number:
Cabin no. 2, camera facing east
63 of 78

Name of Property: New Deal Resources in Watoga State Park Historic District
City or Vicinity: Marlinton
County: Pocahontas **State:** West Virginia
Photographer: Lena Sweeten
Date Photographed: June 2010
Description of Photograph(s) and number:
Riverside Campground road and campsites, camera facing northeast
64 of 78

Name of Property: New Deal Resources in Watoga State Park Historic District
City or Vicinity: Marlinton
County: Pocahontas **State:** West Virginia
Photographer: Lena Sweeten
Date Photographed: June 2010
Description of Photograph(s) and number:
Check-in station at Riverside Campground, camera facing northwest
65 of 78

Name of Property: New Deal Resources in Watoga State Park Historic District
City or Vicinity: Marlinton

**United States Department of the Interior
National Park Service**

**National Register of Historic Places
Continuation Sheet**

Section number PHOTOGRAPHS Page 51

New Deal Resources in Watoga State Park
Historic District

Name of Property

Pocahontas County, West Virginia

County and State

New Deal Resources in West Virginia State
Parks and Forests

Name of multiple listing (if applicable)

County: Pocahontas State: West Virginia
Photographer: Michael Gioulis, Historic Preservation Consultant
Date Photographed: July 2008
Description of Photograph(s) and number:
Workman-Jarvis Cabin, camera facing south
66 of 78

Name of Property: New Deal Resources in Watoga State Park Historic District
City or Vicinity: Marlinton
County: Pocahontas State: West Virginia
Photographer: Lena Sweeten
Date Photographed: June 2010
Description of Photograph(s) and number:
Watoga maintenance area/former CCC Camp Watoga, camera facing southeast
67 of 78

Name of Property: New Deal Resources in Watoga State Park Historic District
City or Vicinity: Marlinton
County: Pocahontas State: West Virginia
Photographer: Michael Gioulis, Historic Preservation Consultant
Date Photographed: July 2008
Description of Photograph(s) and number:
Storage building/Camp Watoga barracks, camera facing north/northeast
68 of 78

Name of Property: New Deal Resources in Watoga State Park Historic District
City or Vicinity: Marlinton
County: Pocahontas State: West Virginia
Photographer: Michael Gioulis, Historic Preservation Consultant
Date Photographed: July 2008
Description of Photograph(s) and number:
Gas shed, camera facing south
69 of 78

Name of Property: New Deal Resources in Watoga State Park Historic District
City or Vicinity: Marlinton
County: Pocahontas State: West Virginia
Photographer: Michael Gioulis, Historic Preservation Consultant
Date Photographed: July 2008
Description of Photograph(s) and number:
Residence/Camp Watoga officer's quarters, camera facing east
70 of 78

Name of Property: New Deal Resources in Watoga State Park Historic District
City or Vicinity: Marlinton
County: Pocahontas State: West Virginia

**United States Department of the Interior
National Park Service**

**National Register of Historic Places
Continuation Sheet**

Section number PHOTOGRAPHS Page 52

New Deal Resources in Watoga State Park
Historic District

Name of Property
Pocahontas County, West Virginia

County and State
New Deal Resources in West Virginia State
Parks and Forests

Name of multiple listing (if applicable)

Photographer: Michael Gioulis, Historic Preservation Consultant

Date Photographed: July 2008

Description of Photograph(s) and number:

**Residence/Camp Watoga officer's quarters, camera facing west/southwest
71 of 78**

Name of Property: New Deal Resources in Watoga State Park Historic District

City or Vicinity: Marlinton

County: Pocahontas

State: West Virginia

Photographer: Michael Gioulis, Historic Preservation Consultant

Date Photographed: July 2008

Description of Photograph(s) and number:

**Maintenance building and garage/Camp Watoga garage, camera facing southeast
72 of 78**

Name of Property: New Deal Resources in Watoga State Park Historic District

City or Vicinity: Marlinton

County: Pocahontas

State: West Virginia

Photographer: Michael Gioulis, Historic Preservation Consultant

Date Photographed: July 2008

Description of Photograph(s) and number:

**Maintenance building/Camp Watoga recreation building, camera facing northwest
73 of 78**

Name of Property: New Deal Resources in Watoga State Park Historic District

City or Vicinity: Marlinton

County: Pocahontas

State: West Virginia

Photographer: Michael Gioulis, Historic Preservation Consultant

Date Photographed: July 2008

Description of Photograph(s) and number:

**Assistant superintendent's residence, camera facing southeast
74 of 78**

Name of Property: New Deal Resources in Watoga State Park Historic District

City or Vicinity: Marlinton

County: Pocahontas

State: West Virginia

Photographer: Lena Sweeten

Date Photographed: June 2010

Description of Photograph(s) and number:

**Beaver Creek campground sites and road, camera facing southeast
75 of 78**

Name of Property: New Deal Resources in Watoga State Park Historic District

City or Vicinity: Marlinton

County: Pocahontas

State: West Virginia

Photographer: Michael Gioulis, Historic Preservation Consultant

United States Department of the Interior
National Park Service

National Register of Historic Places
Continuation Sheet

Section number PHOTOGRAPHS Page 53

New Deal Resources in Watoga State Park
Historic District

Name of Property
Pocahontas County, West Virginia

County and State
New Deal Resources in West Virginia State
Parks and Forests

Name of multiple listing (if applicable)

Date Photographed: July 2008

Description of Photograph(s) and number:

Check-in station and wood shed in Beaver Creek campground, camera facing southwest
76 of 78

Name of Property: New Deal Resources in Watoga State Park Historic District

City or Vicinity: Marlinton

County: Pocahontas

State: West Virginia

Photographer: Michael Gioulis, Historic Preservation Consultant

Date Photographed: July 2008

Description of Photograph(s) and number:

Superintendent's residence, camera facing southeast
77 of 78

Name of Property: New Deal Resources in Watoga State Park Historic District

City or Vicinity: Marlinton

County: Pocahontas

State: West Virginia

Photographer: Michael Gioulis, Historic Preservation Consultant

Date Photographed: July 2008

Description of Photograph(s) and number:

Supply building, camera facing northeast
78 of 78

UNITED STATES DEPARTMENT OF THE INTERIOR
NATIONAL PARK SERVICE

NATIONAL REGISTER OF HISTORIC PLACES
EVALUATION/RETURN SHEET

REQUESTED ACTION: NOMINATION

PROPERTY New Deal Resources in Watoga State Park Historic District
NAME:

MULTIPLE New Deal Resources in West Virginia State Parks and Forests
NAME: MPS

STATE & COUNTY: WEST VIRGINIA, Pocahontas

DATE RECEIVED: 12/20/10 DATE OF PENDING LIST: 1/20/11
DATE OF 16TH DAY: 2/04/11 DATE OF 45TH DAY: 2/04/11
DATE OF WEEKLY LIST:

REFERENCE NUMBER: 10001227

REASONS FOR REVIEW:

APPEAL: N DATA PROBLEM: N LANDSCAPE: N LESS THAN 50 YEARS: N
OTHER: N PDIL: N PERIOD: N PROGRAM UNAPPROVED: N
REQUEST: Y SAMPLE: N SLR DRAFT: N NATIONAL: N

COMMENT WAIVER: N

☒ ACCEPT ☐ RETURN ☐ REJECT 2-4-11 DATE

ABSTRACT/SUMMARY COMMENTS:

RECOM./CRITERIA _____

REVIEWER _____ DISCIPLINE _____

TELEPHONE _____ DATE _____

DOCUMENTATION see attached comments Y/N see attached SLR Y/N

If a nomination is returned to the nominating authority, the nomination is no longer under consideration by the NPS.



WATOGA
STATE PARK



Landscaper 2, JPS 053 @ CD
8576 029 N N N NN 2050, 3/100, 0

New Deal Resources in Watoga State Park Historic District, Pocahontas County, WV
2 of 78



New Deal Resources in Watoga State Park Historic District, Pocahontas County, WV
3 of 78



8576 029 N N N N N N N N 0-001-3-050Z NN N N N N 3/100-0

New Deal Resources in Watoga State Park Historic District, Pocahontas County, WV
4 of 78



Landscape 1. JPS 051 © CD
8577 029 N N N NN 2050.3/100.0

New Deal Resources in Watoga State Park Historic District, Pocahontas County, WV
Sof78



landscape 1 * JF9 059 @ CD
8576 029 N N N NN 2850.3/100.0

New Deal Resources in Watoga State Park Historic District, Pocahontas County, WV
6 of 78





landescape 2. JF9 054 © CD
8576 029 N N N N N N N N 2050.3/100.0

New Deal Resources in Watoga State Park Historic District, Pocahontas County, WV
8 of 78





landscape 2.jpg 052 @ CD
8576 029 N N N NN 2050 3/100.0

New Deal Resources in Watoga State Park Historic District, Pocahontas County, WV
10 of 78



0*001/3*050Z NN N N N N 620 9258
8576 029 N N N NN 2050*3/100*0
Road 178 JPA 067 @ CD

New Deal Resources in Watoga State Park Historic District, Pocahontas County, WV
110f78



New Deal Resources in Watoga State Park Historic District, Pocahontas County, WV
12 of 78

newdealSurvey_PocahontasCounty_WatogaSP_Ph-8106(2).tif Custom
Copyright © 2018



WATOGA
STATE PARK
SOUTH ENTRANCE

WATOGA
STATE PARK
SOUTH ENTRANCE



WELCOME
WATOGA
STATE PARK
ENJOY THE VIEW

West entry - JPA 085 @ CD
8576 029 N N N N N N N N 3/100" 0

New Deal Resources in Watoga State Park Historic District, Pocahontas County, WV
14 of 78



CAVIN
22

New Deal Resources in Watoga State Park Historic District, Pocahontas County, WV
15 of 78

newdeal survey_Pocahontas County - Watoga SP - PH - 0110(1).tif Custom
Copyright © 2010



New Deal Resources in Watoga State Park Historic District, Pocahontas County, WV
16 of 78



newdeal[survey_Pocahontascounty_watogasp_rh-0109(2)].tif Customer
Copyright © 2010

New Deal Resources in Watoga State Park Historic District, Pocahontas County, WV
17 of 78



THE BROOKS MEMORIAL
ARBORETUM

TRAIL MAP

BROOKS
MEMORIAL
ARBORETUM



Stonework 1. JPA 072 @ CD
8576 029 N N N NN 2050.3/100.0

New Deal Resources in Watoga State Park Historic District, Pocahontas County, WV
19 of 78



New Deal Resources in Watoga State Park Historic District, Pocahontas County, WV
20 of 78

newdeal survey, Pocahontas County, West Virginia, PH-B112(2), 411, Custom
Copyright © 2018



New Deal Resources in Watoga State Park Historic District, Pocahontas County, WV
21 of 78



stoneark 2.jpg 073 © CD
8576 029 N N N N N N N N N N 2050:3 100.0

New Deal Resources in Watoga State Park Historic District, Pocahontas County, WV
22 of 78

A wooden trail sign is mounted on a post in a forest. The sign is dark brown with yellow text. It is located on the left side of a dirt path that leads into a dense forest of tall, thin trees. Sunlight filters through the canopy, creating dappled light on the ground.

LAUREL TRAIL
PICNIC AREA 1/2 MI.

Trail 237-JPG 029 © CD
8577 029 N N N N N N N N 620 2258
0*001/2*0502 NH N N N N 3/100*0

New Deal Resources in Watoga State Park Historic District, Pocahontas County, WV
23 of 78



A wooden trail sign stands in a forest. The sign is dark brown with yellow text. It has two lines of text: "ALLEGHENY TRAIL" on the top line and "NOT TRAVEL ONLY" on the bottom line. To the right of the top line of text is a small yellow square. The sign is mounted on a single wooden post. The background is a dense forest with many trees and a ground covered in fallen leaves and low-lying plants.

ALLEGHENY
TRAIL

NOT TRAVEL
ONLY

New Deal Resources in Watoga State Park Historic District, Pocahontas County, WV
24 of 78





HONEYMOON TRAIL

ALLEGHENY TRAIL - 300 YARDS
TEN ACRE TRAIL - 1 1/4 MI.
PINE RUN TRAIL - 1 3/4 MI.
T.M. CHEEK ROAD - 2 MI.



FOOT TRAVEL
0.2 MI.

New Deal Resources in Watoga State Park Historic District, Pocahontas County, WV
26 of 78



FIRE HOSE

New Deal Resources in Watoga State Park Historic District, Pocahontas County, WV
27 of 78

newdeal[survey_pocahontas]com by jra to ba cph-168(1) *41 f. Cus tome
Copyright © 2010



New Deal Resources in Watoga State Park Historic District, Pocahontas County, WV
28 of 78



New Deal Resources in Watoga State Park Historic District, Pocahontas County, WV
29 of 78

newdeal survey_pocahontascounty_watogastatepark_g11312.tif Custom
Copyright © 2019



HUNTERS TRAIL
HUNTER CRAFT TRAIL

New Deal Resources in Wartoga State Park Historic District, Pocahontas County, WV

30 of 78

newdeal | survey | pocahontascounty, wv | 03/08/2018 | 4:11 PM | C:\s\p\m
Copyright © 2018



New Deal Resources in Watoga State Park Historic District, Pocahontas County, WV
31 of 78

newdealSurvey-PocahontasCounty-WatogaSP-Ph-B122C17.tif D:\new
Copyright © 2010



New Deal Resources in Watoga State Park Historic District, Pocahontas County, WV
32 of 78

newdeal survey, Pocahontas County, Watoga State Park, 01/29/11, 411 Custom
Copyright © 2010



New Deal Resources in Watoga State Park Historic District, Pocahontas County, WV

33 of 78

newdeal@upwv.edu, Pocahontas County, Watoga State Park, 8138(1) * 417, Custom
Copyright © 2010



New Deal Resources in Watoga State Park Historic District, Pocahontas County, WV
34 of 78

newdeal1survey_pocahontascounty_watogapark-0130(2).tif Custom
Copyright © 2010



New Deal Resources in Watoga State Park Historic District, Pocahontas County, WV

35 of 78

newdeal[survey_pocahontascounty_watoga]_PLH-8132(1).tif C:\E:\ham
Copyright © 2010



New Deal Resources in Watoga State Park Historic District, Pocahontas County, WV
36 of 78



newdeal survey, Pocahontas county, wv
Copyright © 2018

New Deal Resources in Watoga State Park Historic District, Pocahontas County, WV
37 of 78



New Deal Resources in Watoga State Park Historic District, Pocahontas County, WV
380F78



New Deal Resources in Watoga State Park Historic District, Pocahontas County, WV
39 of 78



New Deal Resources in Watoga State Park Historic District, Pocahontas County,
WV

40 of 28

newdeal1survey_pocahontascounty_watogastatepark-0119413.tif - Custom
Copyright © 2018



newdeal:survey_pocahontascounty_watogast_ph_0119(2).tif Custom
Copyright © 2018

New Deal Resources in Watoga State Park Historic District, Pocahontas County, VA
41 of 78



New Deal Resources in Watoga State Park Historic District, Pocahontas County, WV
42 of 78



New Deal Resources in Watoga State Park Historic District, Pocahontas County, WV
43 of 78



PP DLSRG_0 0000000 WV_Pocahontas county_new deal WV mfd_watoga state park
153697 6/24/2010

New Deal Resources in Watoga State Park Historic District, Pocahontas County, WV
44 of 78



Watoga L588-7P9 084 (2) CD
8572 029 N H H NM 2050.3 100.0

New Deal Resources in Watoga State Park Historic District, Pocahontas County, VA
45 of 78



New Deal Resources in Watoga State Park Historic District, Pocahontas County, WV
460f78

newdealisurvey_pocahontascounty_watogastatepark-81170235.tif Custom
Copyright © 2018



47 of 78



New Deal Resources in Watoga State Park Historic District, Pocahontas County, WV
48 of 78



New Deal Resources in Watoga State Park Historic District, Pocahontas County, WV
49 of 78



New Deal Resources in Watoga State Park Historic District, Pocahontas County, WV
50 of 78

newdeal_survey_PocahontasCounty_WatogaSt_Pk-B142C1X.tif Custom
Copyright © 2010



New Deal Resources in Watoga State Park Historic District, Pocahontas County, WV
Sl of 78

newdeal[survey_pocahontascounty_watogastp-ph-8145(2)*.tif] Copyright © 2018





New Deal Resources in Watoga State Park Historic District, Pocahontas County, WV
53 of 78

53 of 78



New Deal Resources in Watoga State Park Historic District, Pocahontas County, WV
54 of 78

newdeal survey_pocahontascounty_watogasp_rph-014913.tif Custom Copyright © 2010



newdealSurvey_PocahontasCounty_WatobaRPH-0150(2).tif Custom
Copyright © 2010

New Deal Resources in Westoga State Park Historic District, Pocahontas County, WV
55 of 78



New Deal Resources in Watoga State Park Historic District, Pocahontas County, WV
56 of 78



New
~~Area~~ Deal Resources in Watoga State Park Historic District, Pocahontas County, WV
570f78

newdeal30unex-pocahontascounty-wvto883f-ph-8155c13*41f Custom
Copyright © 2018



Arboretum 2. JPA 831 @ CD
8576 829 N N N+1 NN 200.8.3-100.0

New Deal Resources in Watoga State Park Historic District, Pocahontas County, WV
58 of 78



New Deal Resources in Watoga State Park Historic District, Pocahontas County, WV
Sq. of 78



New Deal Resources in Watoga State Park Historic District, Pocahontas County, WV
600F78



TRAIL MAP

LEGEND

HONEYTREE TRAIL - YELLOW
BUCKHORN TRAIL - YELLOW
DRAGON CRAFT TRAIL - WHITE
STREAM
YELLOW LINE - YELLOW
DISTANCE SHOWN BETWEEN
TRAIL INTERSECTIONS
MAP NOT TO SCALE



BROOKS
MEMORIAL
ARBORETUM

New Deal Resources in Watoga State Park Historic District, Pocahontas County, WV
61 of 78

newdealresources.pocahontascounty.wv.tif Custom
Copyright © 2018



newdeal1survey-pocahontascounty-watogasp.pdf-0159(1).tif Custom
Copyright © 2010

New Deal Resources in Watoga State Park Historic District, Pocahontas County, WV
620F78



New Deal Resources in Watoga State Park Historic District, Pocahontas County, WV
630878





Riverside C. JPB 066 © CD
8576 029 N N N NN 2050.3/100.0

New Deal Resources in Watoga State Park Historic District, Pocahontas County, WV
65 of 78



New Deal Resources in Watoga State Park Historic District, Pocahontas County, WV
66 of 78



CCC Camp 22, JF8 837 © CD
B577 029 H N H H NN 2058.3/100.0

New Deal Resources in Watoga State Park Historic District, Pocahontas County, WV
670f 78



needed\survey_location\lascounty-watogapark-0123\1x4.tif Custom
Copyright © 2010

New Deal Resources in Watoga State Park Historic District, Pocahontas County, WV
68 of 78



GAS FOR STATE USE
NOT FOR PUBLIC SALE

New Deal ~~Resources~~ Resources in Watoga State Park Historic District, Pocahontas County, WV
69 of 78



PP DLSR6_0 0000000 WV_Pocahontas county_new deal WV mfd_watoga state park
153697 6/24/2010

New Deal Resources in Watoga State Park Historic District, Pocahontas County, WV
70 of 78



New Deal Resources in Watoga State Park Historic District, Pocahontas County, WV
21 of 78

newdealresources.pocahontascounty.watogapark-0125023-411 Custom
Copyright © 2019



newdeal survey, Pocahontas County, Watoga, Ph-B126C13.tif Custom
Copyright © 2010

New Deal Resources in Watoga State Park Historic District, Pocahontas County, WV
72 of 78



New Deal Resources in Watoga State Park Historic District, Pocahontas County, WV
75 of 78



IF ATTENDING NEW
AND FULL-TIME
THESE INSTRUCTIONS

FOR NEW ATTENDANCE
FOR NEW ATTENDANCE
FOR NEW ATTENDANCE

FOR NEW ATTENDANCE
FOR NEW ATTENDANCE

FOR NEW ATTENDANCE
FOR NEW ATTENDANCE

FOR NEW ATTENDANCE
FOR NEW ATTENDANCE

FOR NEW ATTENDANCE
FOR NEW ATTENDANCE

FOR NEW ATTENDANCE
FOR NEW ATTENDANCE

FOR NEW ATTENDANCE
FOR NEW ATTENDANCE

FOR NEW ATTENDANCE
FOR NEW ATTENDANCE

FOR NEW ATTENDANCE
FOR NEW ATTENDANCE

FOR NEW ATTENDANCE
FOR NEW ATTENDANCE

FOR NEW ATTENDANCE
FOR NEW ATTENDANCE

FOR NEW ATTENDANCE
FOR NEW ATTENDANCE

FOR NEW ATTENDANCE
FOR NEW ATTENDANCE

FOR NEW ATTENDANCE
FOR NEW ATTENDANCE

FOR NEW ATTENDANCE
FOR NEW ATTENDANCE

FOR NEW ATTENDANCE
FOR NEW ATTENDANCE

FOR NEW ATTENDANCE
FOR NEW ATTENDANCE

FOR NEW ATTENDANCE
FOR NEW ATTENDANCE

FOR NEW ATTENDANCE
FOR NEW ATTENDANCE

FOR NEW ATTENDANCE
FOR NEW ATTENDANCE

FOR NEW ATTENDANCE
FOR NEW ATTENDANCE

FOR NEW ATTENDANCE
FOR NEW ATTENDANCE

FOR NEW ATTENDANCE
FOR NEW ATTENDANCE

FOR NEW ATTENDANCE
FOR NEW ATTENDANCE

PP DLSR6_0 00000000 WV_Pocahontas county_new deal WV mfd_watoga state park
153697 6/24/2010

New Deal Resources in Watoga State Park Historic District, Pocahontas County, WV
76 of 78



New Deal Resources in Watoga State Park Historic District, Pocahontas County, WV
73 of 78



Asst Super + JPS 032 @ CD
8576 029 N N N+1 NN 2050.3/100.0

New Deal Resources in Watoga State Park Historic District, Pocahontas County, WV
74 of 78



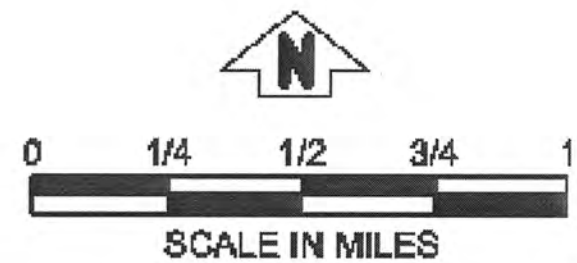
New Deal Resources in Wataga State Park Historic District, Pocahontas County, WV
77 of 78

newdeal[survey_pocahontas county, wv] 0147c13.tif. Custom
Copyright © 2010












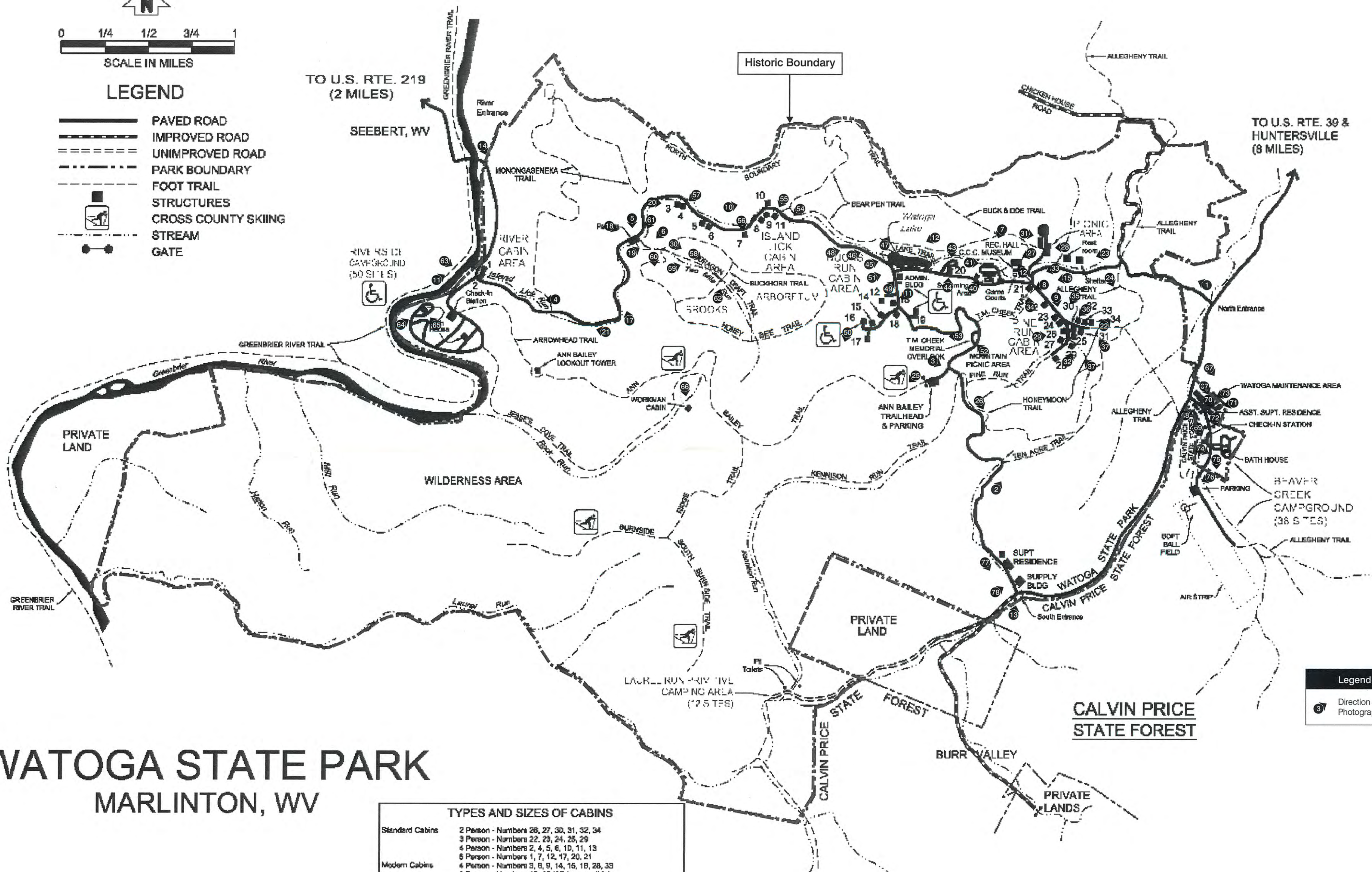
New Deal Resources in Watoga State Park Historic District, Pocahontas County, WV
78 of 78

New Deal Resources in
Wetoga State Park Historic District
Pocahontas County, West Virginia
Photo Key



LEGEND

- | | |
|-----------------------------------------------------------------------------------|---------------------|
|  | PAVED ROAD |
|  | IMPROVED ROAD |
|  | UNIMPROVED ROAD |
|  | PARK BOUNDARY |
|  | FOOT TRAIL |
|  | STRUCTURES |
|  | CROSS COUNTY SKIING |
|  | STREAM |
|  | GATE |



WATOOGA STATE PARK
MARLINTON, WV

TYPES AND SIZES OF CABINS

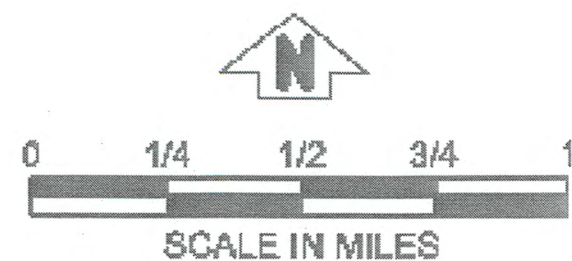
Standard Cabins	2 Person - Numbers 26, 27, 30, 31, 32, 34
	3 Person - Numbers 22, 23, 24, 25, 29
	4 Person - Numbers 2, 4, 5, 6, 10, 11, 13
Modern Cabins	6 Person - Numbers 1, 7, 12, 17, 20, 21
	4 Person - Numbers 3, 8, 9, 14, 15, 16, 28, 33
	8 Person - Numbers 18, 19 (ADA accessible)

Park Area	10,100 Acres
Highest Elevation	3211 Feet
Lowest Elevation	2000 Feet

Legend

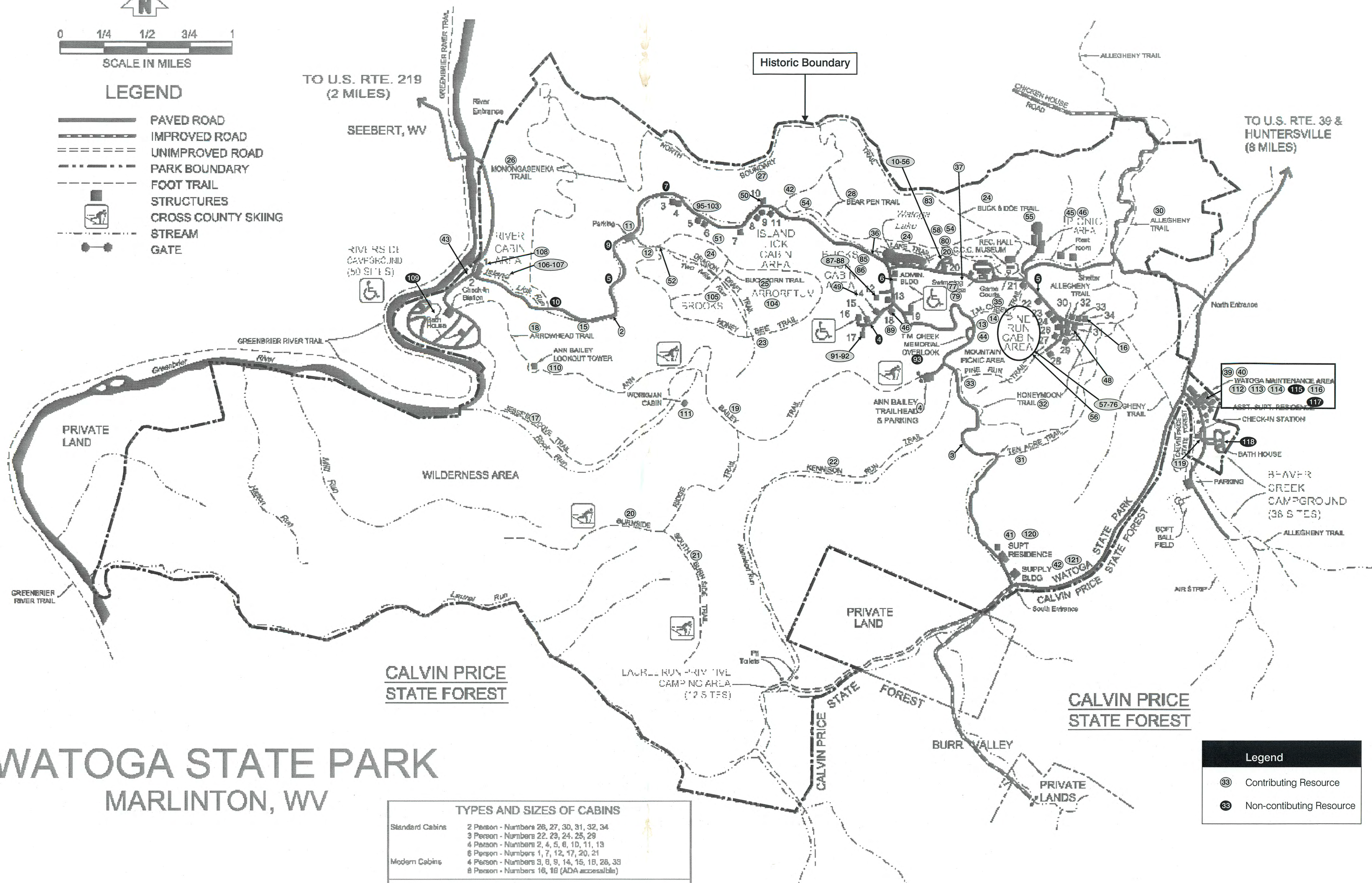
3 Direction of Photograph

New Deal Resources in
 Watoga State Park Historic District
 Pocahontas County, West Virginia
 Sketch Map



LEGEND

- PAVED ROAD
- IMPROVED ROAD
- UNIMPROVED ROAD
- PARK BOUNDARY
- FOOT TRAIL
- STRUCTURES
- CROSS COUNTRY SKIING
- STREAM
- GATE



WATOGA STATE PARK

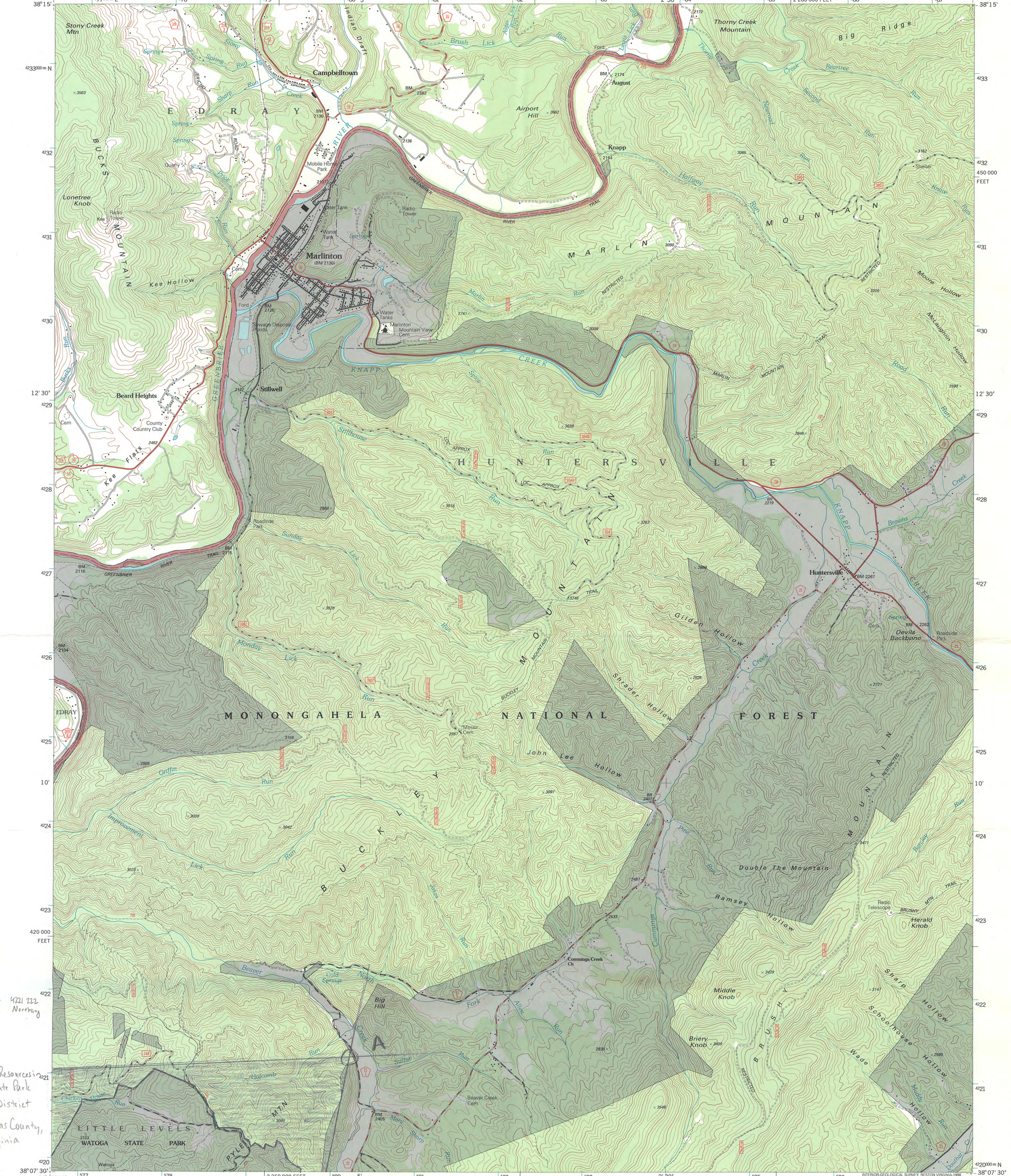
MARLINTON, WV

TYPES AND SIZES OF CABINS	
Standard Cabins	2 Person - Numbers 26, 27, 30, 31, 32, 34 3 Person - Numbers 22, 23, 24, 25, 29 4 Person - Numbers 2, 4, 5, 6, 10, 11, 13 6 Person - Numbers 1, 7, 12, 17, 20, 21
Modern Cabins	4 Person - Numbers 3, 8, 9, 14, 15, 16, 28, 33 8 Person - Numbers 18, 19 (ADA accessible)
Park Area	10,100 Acres
Highest Elevation	3211 Feet
Lowest Elevation	2000 Feet

Legend	
	Contributing Resource
	Non-contributing Resource

A: 17 580187 4221 222
zone Easting Northing

New Deal Resources in
Watoga State Park
Historic District
Pocahontas County,
West Virginia



Produced by the U.S. Geological Survey
Revised by the U.S. Forest Service

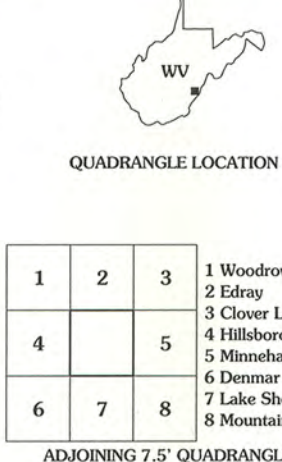
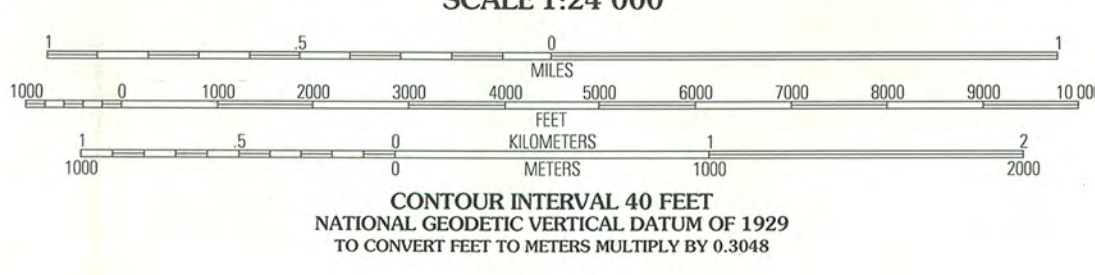
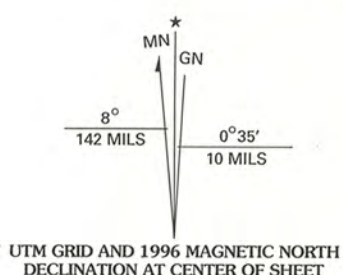
Areas outside the National Forest System lands may not have been revised
Topography compiled 1973. Planimetry derived from imagery taken 1990
Partial field check by U.S. Forest Service 1995

North American Datum of 1927 (NAD 27). Projection and 10 000-foot ticks:
West Virginia coordinate system, south zone (Lambert conformal conic)
Blue 1000-meter Universal Transverse Mercator ticks, zone 17

North American Datum of 1983 (NAD 83) is shown by dashed corner ticks
The values of the shift between NAD 27 and NAD 83 for 7.5-minute
intersections are obtainable from National Geodetic Survey NADCON software

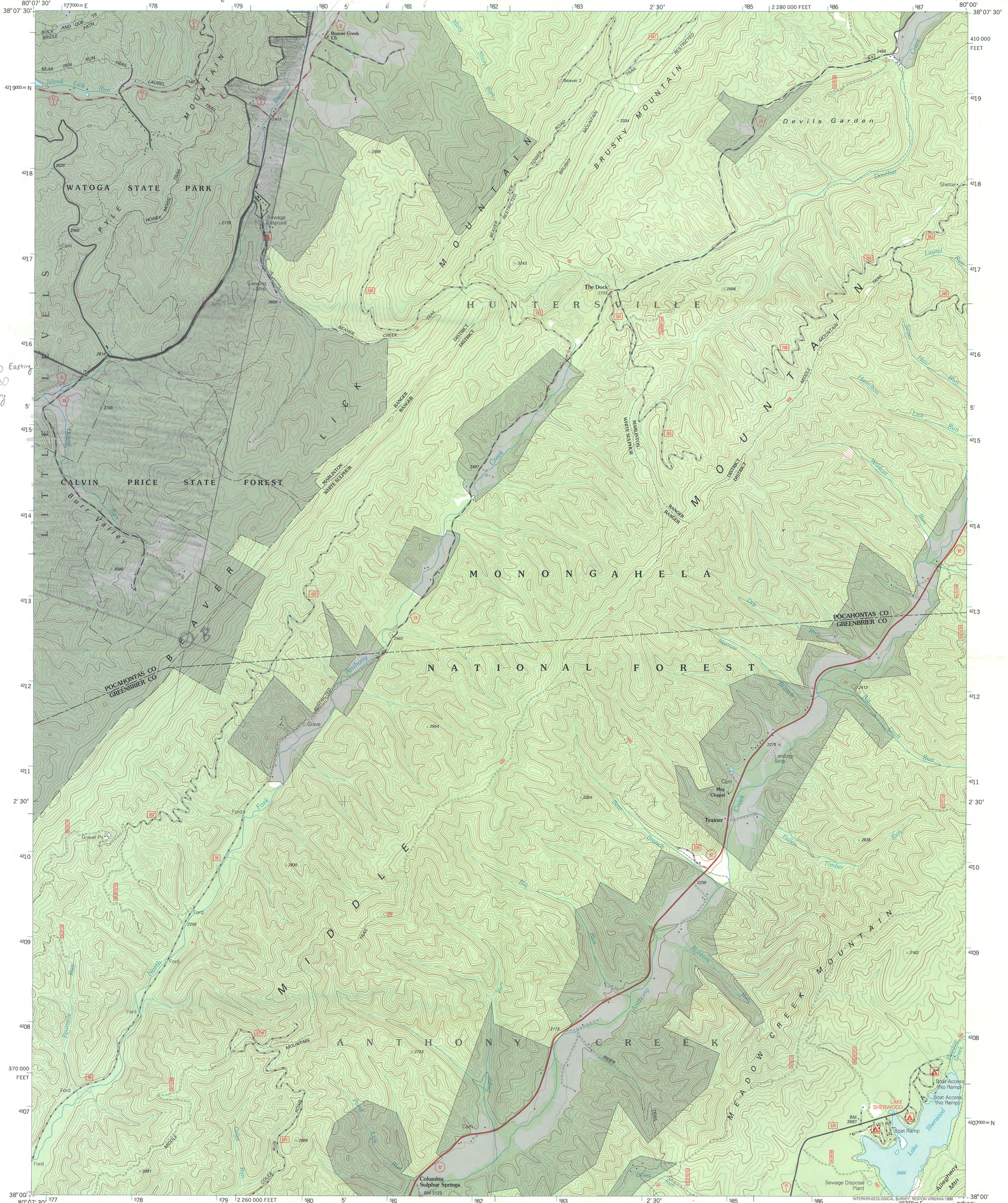
Non-National Forest System lands within the National Forest
Inholdings may exist in other National or State reservations

This map is not a legal land line or ownership document. Public lands are
subject to change and leasing, and may have access restrictions; check
with local offices. Obtain permission before entering private lands



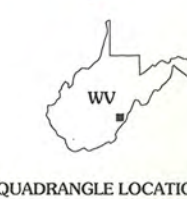
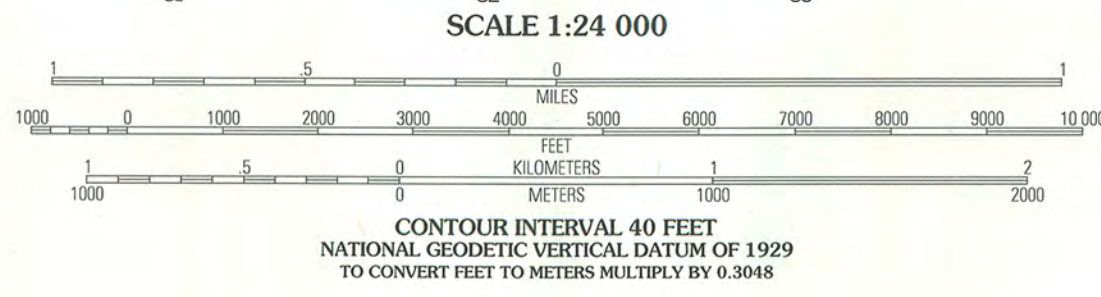
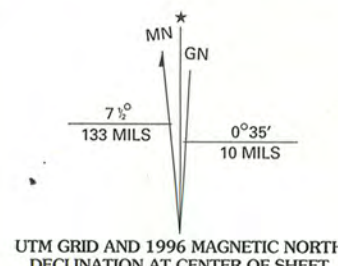
HIGHWAYS AND ROADS	
Interstate.....	Primary highway.....
U. S.	Secondary highway.....
State	Light-duty road.....
County	Paved.....
National Forest, suitable for passenger cars.....	Gravel.....
National Forest, suitable for high clearance vehicles.....	Dirt.....
National Forest Trail.....	Composition unspecified.....
	Unimproved; 4 wheel drive.....
	Trail.....
	Gate.....

MARLINTON, WV
1995
DMA 4960 II NE - SERIES W854



Produced by the U.S. Geological Survey
Revised by the U.S. Forest Service

Topography compiled 1973. Planimetry derived from imagery taken 1990
Partial field check by U.S. Forest Service 1995
North American Datum of 1927 (NAD 27). Projection and 10 000-foot ticks:
West Virginia coordinate system, south zone (Lambert conformal conic)
Blue 1000-meter Universal Transverse Mercator ticks, zone 17
North American Datum of 1983 (NAD 83) is shown by dashed corner ticks
The values of the shift between NAD 27 and NAD 83 for 7.5-minute
intersections are obtainable from National Geodetic Survey NADCON software
Non-National Forest System lands within the National Forest
Inholdings may exist in other National or State reservations
This map is not a legal land line or ownership document. Public lands are
subject to change and leasing, and may have access restrictions; check
with local offices. Obtain permission before entering private lands



1	2	3	1 Hillsboro
4	5	2 Marlinton	3 Minnehaha Springs
6	7	4 Denmar	5 Mountain Grove
		6 Alton	7 Buckner Gap
		8 Falling Spring	

ADJOINING 7.5' QUADRANGLES

HIGHWAYS AND ROADS	
Interstate	Primary highway
U. S.	Secondary highway
State	Light-duty road
County	Paved
National Forest, suitable for passenger cars	Dirt
National Forest, suitable for high clearance vehicles	Composition unspecified
National Forest Trail	Unimproved; 4 wheel drive
	Trail
	Gate

LAKE SHERWOOD, WV
1995
DMA 4960 II SE - SERIES V854

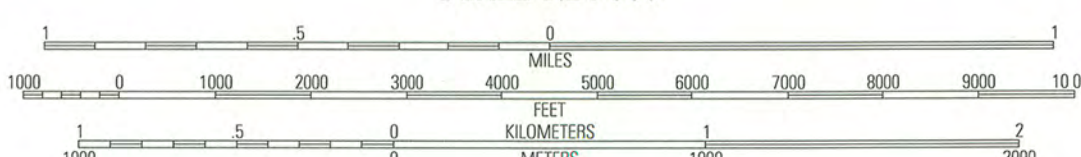
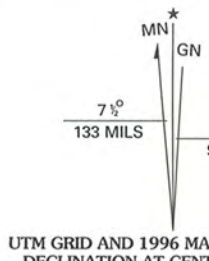
New Deal Resources in
Watoga State Park
Historic District
Pocahontas County,
West Virginia

C: 17 zone
567165D Easting
4216015 Northing



Produced by the U.S. Geological Survey
Revised by the U.S. Forest Service

Areas outside the National Forest System lands may not have been revised
Topography compiled 1973. Planimetry derived from imagery taken 1990
Partial field check by U.S. Forest Service 1995
North American Datum of 1927 (NAD 27). Projection and 10 000-foot ticks:
West Virginia coordinate system, south zone (Lambert conformal conic). Blue
1000-meter Universal Transverse Mercator ticks, zone 17
North American Datum of 1983 (NAD 83) is shown by dashed corner ticks
The values of the shift between NAD 27 and NAD 83 for 7.5-minute
intersections are obtainable from National Geodetic Survey NADCON software
Non-National Forest System lands within the National Forest
Inholdings may exist in other National or State reservations
This map is not a legal land line or ownership document. Public lands are
subject to change and leasing, and may have access restrictions; check
with local offices. Obtain permission before entering private lands



SCALE 1:24 000
CONTOUR INTERVAL 40 FEET
NATIONAL GEODETIC DATUM OF 1929
TO CONVERT FEET TO METERS MULTIPLY BY 0.3048

THIS MAP COMPLIES WITH NATIONAL MAP ACCURACY STANDARDS
FOR SALE BY U.S. GEOLOGICAL SURVEY, P.O. BOX 25286, DENVER, COLORADO 80225
A FOLDER DESCRIBING TOPOGRAPHIC MAPS AND SYMBOLS IS AVAILABLE ON REQUEST



1	2	3	1 Lobelia
			2 Hillsboro
			3 Marlinton
4		5	4 Droop
			5 Lake Sherwood
			6 Anthony
6	7	8	7 Alton
			8 Rucker Gap

ADJOINING 7.5' QUADRANGLES

HIGHWAYS AND ROADS	
Interstate	1
U. S.	20
State	21
County	22
National Forest, suitable for passenger cars	23
National Forest, suitable for high clearance vehicles	24
National Forest Trail	25
Primary highway	26
Secondary highway	27
Light-duty road	28
Paved	29
Gravel	30
Dirt	31
Composition unspecified	32
Unimproved, 4 wheel drive	33
Trail	34
Gate	35

DENMAR, WV
1995
DMA 4960 II SW - SERIES V854





Produced by the U.S. Geological Survey
Revised by the U.S. Forest Service

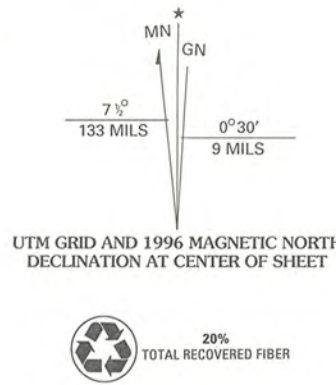
Areas outside the National Forest System lands may not have been revised
Topography compiled 1973. Planimetry derived from imagery taken 1990
Partial field check by U.S. Forest Service 1995

North American Datum of 1927 (NAD 27). Projection and 10 000-foot ticks:
West Virginia coordinate system, south zone (Lambert conformal conic)
Blue 1000-meter Universal Transverse Mercator ticks, zone 17

North American Datum of 1983 (NAD 83) is shown by dashed corner ticks
The values of the shift between NAD 27 and NAD 83 for 7.5-minute
intersections are obtainable from National Geodetic Survey NADCON software

Non-National Forest System lands within the National Forest
Inholdings may exist in other National or State reservations

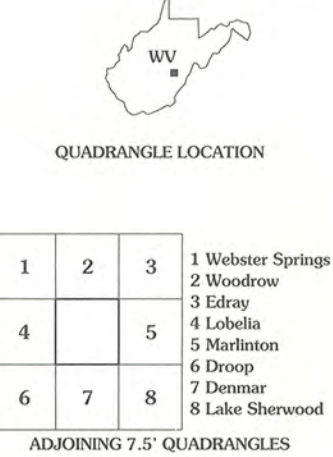
This map is not a legal land line or ownership document. Public lands are
subject to change and leasing, and may have access restrictions; check
with local offices. Obtain permission before entering private lands



SCALE 1:24 000

CONTOUR INTERVAL 40 FEET
NATIONAL GEODETIC VERTICAL DATUM OF 1929
TO CONVERT FEET TO METERS MULTIPLY BY 0.3048

THIS MAP COMPLIES WITH NATIONAL MAP ACCURACY STANDARDS
FOR SALE BY U.S. GEOLOGICAL SURVEY, P.O. BOX 25286, DENVER, COLORADO 80225
A FOLDER DESCRIBING TOPOGRAPHIC MAPS AND SYMBOLS IS AVAILABLE ON REQUEST



HIGHWAYS AND ROADS

Interstate	Primary highway
U. S.	Secondary highway
State	Light-duty road
County	Paved
National Forest, suitable for passenger cars	Gravel
National Forest, suitable for high clearance vehicles	Dirt
National Forest Trail	Composition unspecified
	Unimproved; 4 wheel drive
	Trail
	Gate

HILLSBORO, WV
1995
DMA 4960 II NW - SERIES V854

New Deal Resources in
Watoga State Park
Historic District
Pocahontas
County, West
Virginia
D:
17 Zone
571 701 Easting
4220910 Northing

